

Hauppauge!®

Wi-Music PC2410 Wireless Audio Transceiver Quick Installation Guide for Windows XP, Windows Vista And Mac Operating Systems

© Hauppauge Computer Works, Inc. 2005-2008

Hauppauge Computer Works, Inc.
91 Cabot Court
Hauppauge, NY 11788

Telephone: 631-434-1600
Tech Support: 631-434-3197
techsupport@hauppauge.com

Hauppauge Computer Works, GmbH
Krefelder Straße 669
41061 Mönchengladbach, Germany

Telephone: 02161-694880
Tech Support: 02161-6948840
info@Hauppauge.de

Hauppauge Computer Works, Ltd
6-10 Bank Chambers
Borough High Street
London, U.K. SE19QQ

Telephone: 0207-378-1997
Fax: 0207-357-9171
Tech Support 0207-378-0202
support@hauppauge.co.uk

Hauppauge Digital Asia Pte Ltd
BLK 1093, Lower Delta Road, #04-05,
Tiong Bahru Industrial Estate,
Singapore 169204

Support@Hauppauge.com.sg
Website: www.hauppauge.com.sg

www.hauppauge.com

Contents:

- Wi-Music Wireless USB Stick Transmitter 1 pc
- Wi-Music Receiver 1 pc
- 5 Volt DC power Adapter
- 3.5" Stereo to RCA cable
- Quick Installation Guide (This guide)

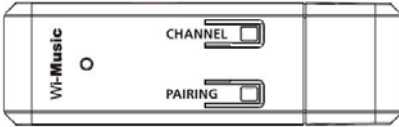
Product Features:

The Hauppauge Wi-Music connects the Personal Computer to Traditional High Fidelity Speakers. Now you are able to enjoy a wide range of computer based music on your home hifi systems or any power speaker, wirelessly. Using the latest 2.4Ghz wireless technology, the Hauppauge Wi-Music provides you with endless entertainment from the 'music' library on your hifi. The music you purchased from the Internet can now be enjoyed in more ways than just PC speakers or ear-buds headphones.

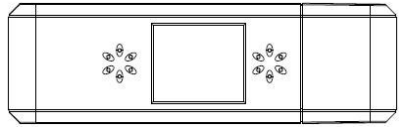
Wi-Music USB Transmitter Features:

- Plug and play
- No software driver required
- Supported operating systems
 - Windows XP, Windows Vista
 - MAC OS9.2.1, MAC OS10.2
- USB 1.1 full-speed compliant stereo audio transmitter.
- Uncompressed audio transmission.

- Support 8 KHz, 11.025 KHz, 44.1 KHz and 48 KHz sampling rates for 2 channels playback.
- 2.4GHz GFSK Transmitter with 8 selectable channels.
- Separate buttons for channel select and ID Pairing.
- The LED will light up upon power up and it will turn to blinking mode when transmitting audio streams.
- USB type A interface.
- Typical 15m indoor range.



Top view



Bottom view

Wi-Music Receiver Features:

- Auto power off when there is no music transmission
- Supports 48KHz, 16-bit 2 channels, uncompressed audio transmission
- 2.4GHz GFSK wireless link with 8 selectable channels
- Up to 30m indoor range (Line of Sight)
- Designed to conform to both the FCC15.247



Note: The Wi-Music USB Stick Transmitter and Receiver are pre-paired in the factory.

Installing the Hauppauge Wi-Music Transmitter under Windows XP:

1. Close all various media player applications such as Window Media Player, iTunes, Real Player and etc before plugging in the Wi-Music USB stick in the PC/laptop. Windows will detect the Wi-Music USB stick automatically.
2. To verify whether the device is working, select Control panel→Sound and Audio Devices→Audio Tab. Default device for sound playback should be “**USB Audio Device**” as shown in the figure below.



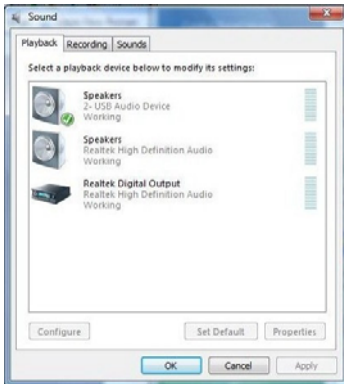
3. Select Button “Volume” to make sure “Mute All” is not activated.
4. Next, select the button “Advanced” to go to Advanced Audio Properties Windows and then select Tab page “Effect”. Select Button “Play Default Sound” and user should be able to hear the Windows Default Sound transmitted to the Headphone.



5. Start any Media Player applications such as Window Media Player, iTunes, Real Play and play a music file. The LED Indicator on the Wi-Music USB stick will blink as long as there is an audio transmission.

Installing the Hauppauge Wi-Music Transmitter under Windows Vista:

1. Close all various media player applications such as Window Media Player, iTunes and Real Player before plugging in the Wi-Music USB stick into the system. Windows Vista will detect the Wi-Music USB stick automatically.
2. To verify whether the device is working, select Control panel→Sound. Depending on the PC/laptop, all various audio devices available in the system will be displayed. Make sure that “USB Audio Device” is selected as shown in the figure below.



3. Next, select “Properties” button, then tab page “Advanced” and then “Test” to test the Headphone. User should hear Window default sound transmitted on both Left and Right channel.



4. Start any Media Player applications such as Window Media Player, iTunes, Real Play and play a music file. The LED Indicator on the Wi-Music USB stick will blink as long as there is an audio transmission.

Installing the Hauppauge Wi-Music Transmitter under MAC OS 9.1 and 10.4.3:

1. Close all various media player applications such as Quick time player, iTunes and Real Player before plugging in the Wi-Music USB stick into the system. MAC OS will detect the Wi-Music USB stick automatically.
2. To verify whether the device is working, Go to Preferences→Sound as shown in the figure below.



3. Under the properties of Sound >> Output tab, depending on the PC/laptop, all various audio devices available in the system will be displayed. Make sure that "USB Audio Device" is selected as shown in the figure below.



ID Pairing Procedures

Turn ON the Wi-Music receiver unit. Press the PAIRING button on the Wi-Music receiver unit for 3 seconds and release it, then press the Pairing button on the USB stick transmitter for 1 sec. You will see the LED light will change from Red to Blue once it paired successfully.

Also once the user initiate the pairing function at the receiver unit the user can press the pairing switch at the transmitter unit any time with in 5 minutes to complete the pairing process.

Note:

By default the USB transmitter and receiver units are pre-paired in the factory so the user doesn't require to pair it again when they connect it to their PC.

Channel Switching Procedures

When experiencing interference, users should follow the following procedure to hop to the next RF channel. There are 8 RF channels available in this system.

1. Press the "CHANNEL" switch to change to next RF Channel.
2. Repeat step 1 until clear music is heard.

Wi-Music Receiver Auto-Power off

When there is no music transmission for consecutive 5 minutes, the Wi-Music receiver will be shut off automatically.

FAQ

Problem	Possible cause	Solution
Wi-Music USB stick does not turn on (no light)	Wi-Music USB stick is spoilt	Contact an authorized service centre
Wi-Music USB stick light does not blink after playing music	Windows does not switch to Wi-Music USB stick device	Follow installation guide described above
Wi-Music Receiver does not turn ON	Power switch is not Pressed. If still doesn't Turn ON, check the 5 Volt DC IN adapter is connected firmly to the Wi-Music Receiver. Wi-Music is spoilt	Press the power switch to turn it ON. Contact an authorized service centre
No sound from the Speaker	Source not playing Volume is turned to minimum Wi-Music USB stick light is not blinking. This is due to interference from other electronics devices Wi-Music USB stick is not paired with the Wi-Music receiver unit.	Plug the Wi-Music USB stick onto PC Run music software from PC and play Increase volume Press the CHANNEL switch on Wi-Music USB stick to hop to next channel Turn ON the Wi-Music receiver unit. Press the PAIRING button on the Wi-Music receiver unit for 3 seconds and release it, then press the Pairing button on the USB stick transmitter for 1 sec. You will see the LED light will change from Red to Blue once it paired successfully.
Wifi not working after installing Wi-Music USB stick	Wifi and Wi-Music USB stick uses same frequency channel	Press the CHANNEL switch on Wi-Music USB stick to hop to next channel.

CE Statement:

This equipment has been tested and complies with EN 300328/301489-1 & 17 for 802.11b(g) BT, EN 55022+55024 for IT and EN60950-1 LVD standards.

FCC Statement:

Warning: Changes or modifications not expressly approved by the party responsible for compliance could void the user's authority to operate the equipment.

NOTE:

This equipment has been tested and found to comply with the limits for a Class B digital device, pursuant to Part 15 of the FCC Rules. These limits are designed to provide reasonable protection against harmful interference in a residential installation. This equipment generates, uses and can radiate radio frequency energy and, if not installed and used in accordance with the instructions, may cause harmful interference to radio communications.

However, there is no guarantee that interference will not occur in a particular installation. If this equipment does cause harmful interference to audio transmission or reception, which can be determined by turning the equipment off and on, the user is encouraged to try to correct the interference by one or more of the following measures:

- By changing to a different channel.
- Increase the separation between the equipment and receiver.
- Connect the equipment into an outlet on a circuit different from that to which the receiver is needed.
- Consult the dealer or an experienced technician for help.

This Device Complies With Part 15 of The FCC Rules.Operation Is Subject To The Following Two Conditions:

(1) This Device May Not Cause Harmful Interference, And (2) This Device Must Accept Any Interference Received, Including Interference That May Cause Undesired Operation.

Waste Electrical and Electronic Equipment (WEEE)

The device may not be disposed of with household rubbish. This appliance is labelled in accordance with European Directive 2002/96/EG concerning used electrical and electronic appliances (Waste Electrical and Electronic Equipment –WEEE). The guideline determines the framework for the return and recycling of used appliances as applicable throughout the EU. To return your used device, please use the return and collection systems available to you.