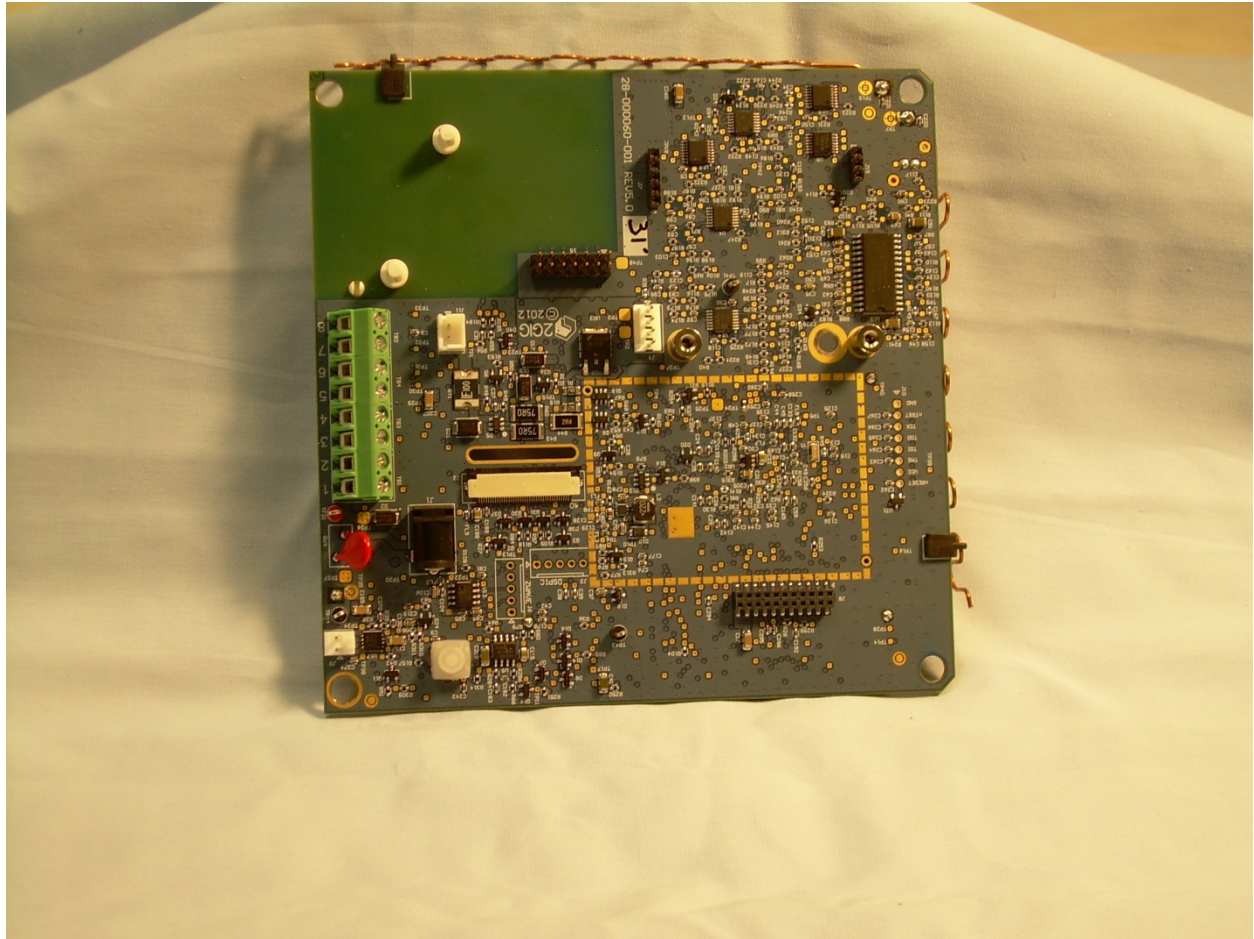


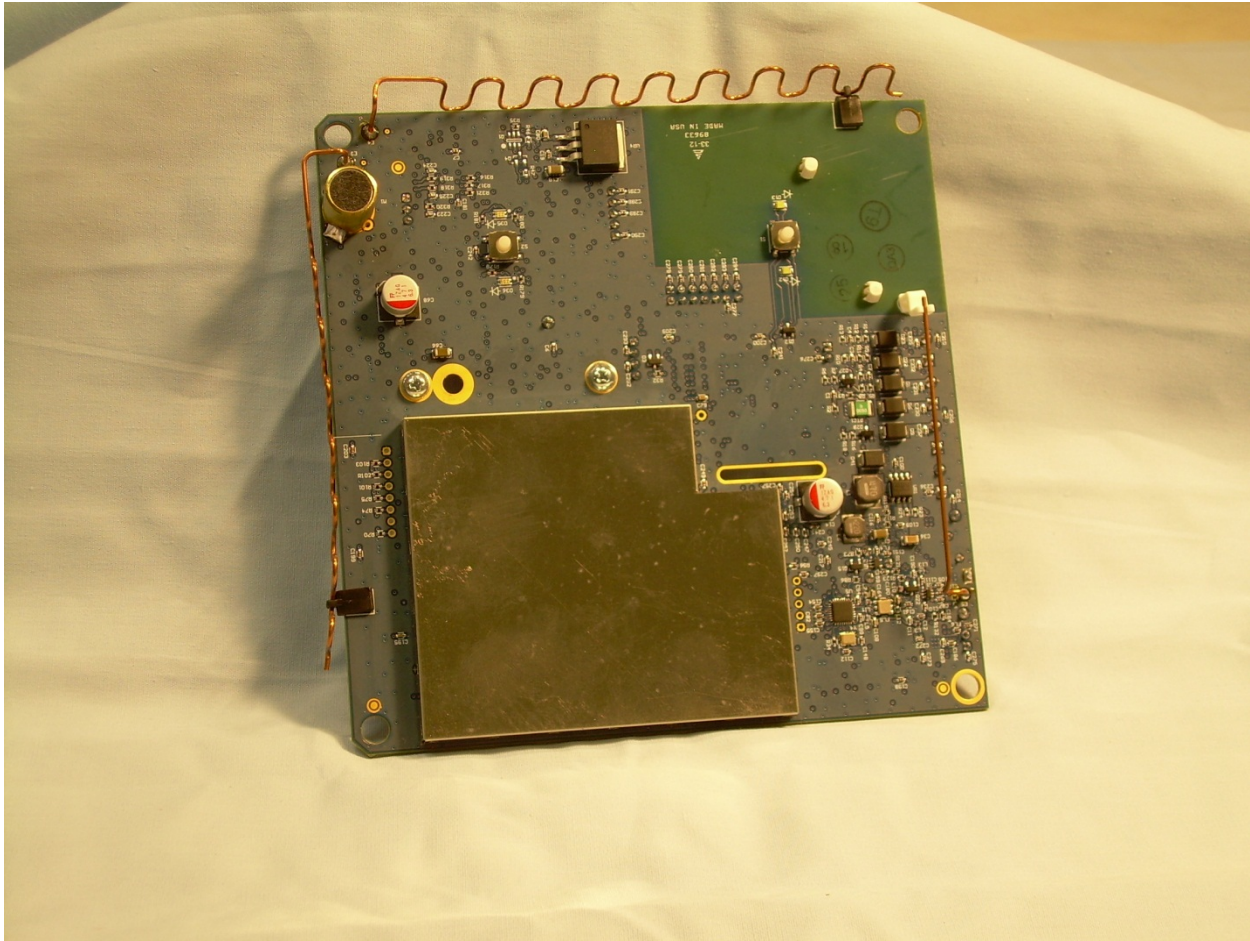
Internal View of the EUT



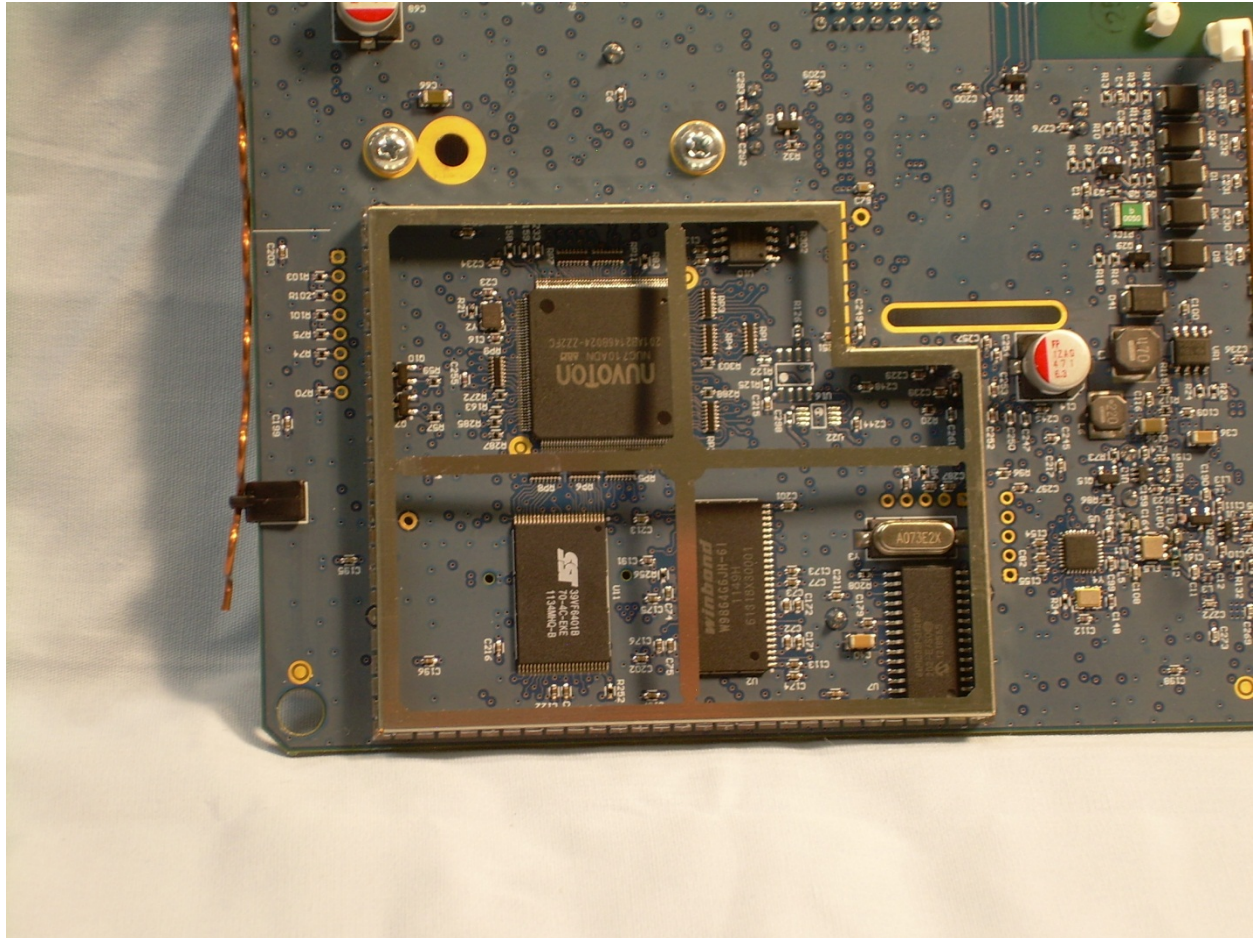
View of the Back Side of the Main PCB



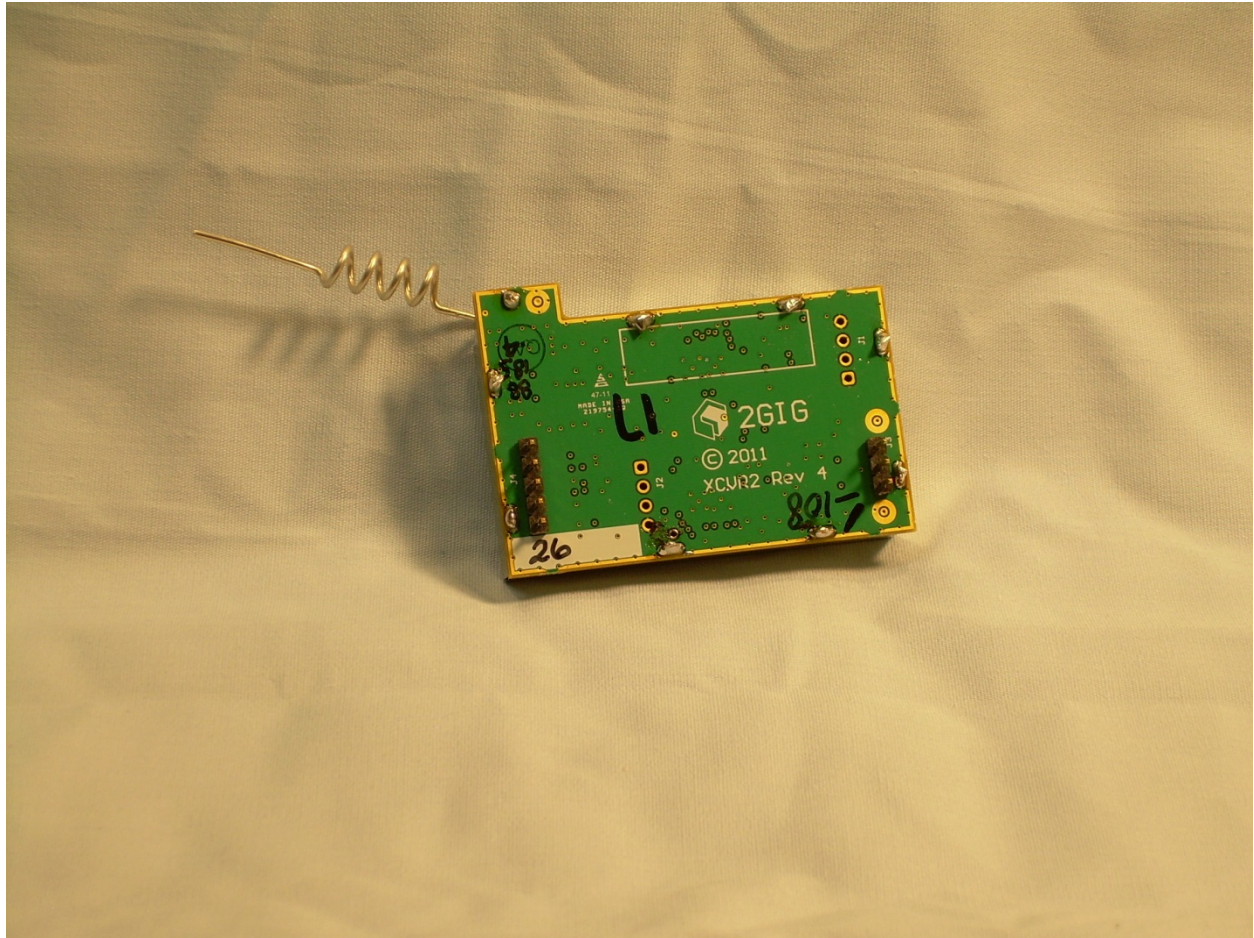
Front View of the Main PCB



View of the Circuitry Under the RF Shield on the Main PCB



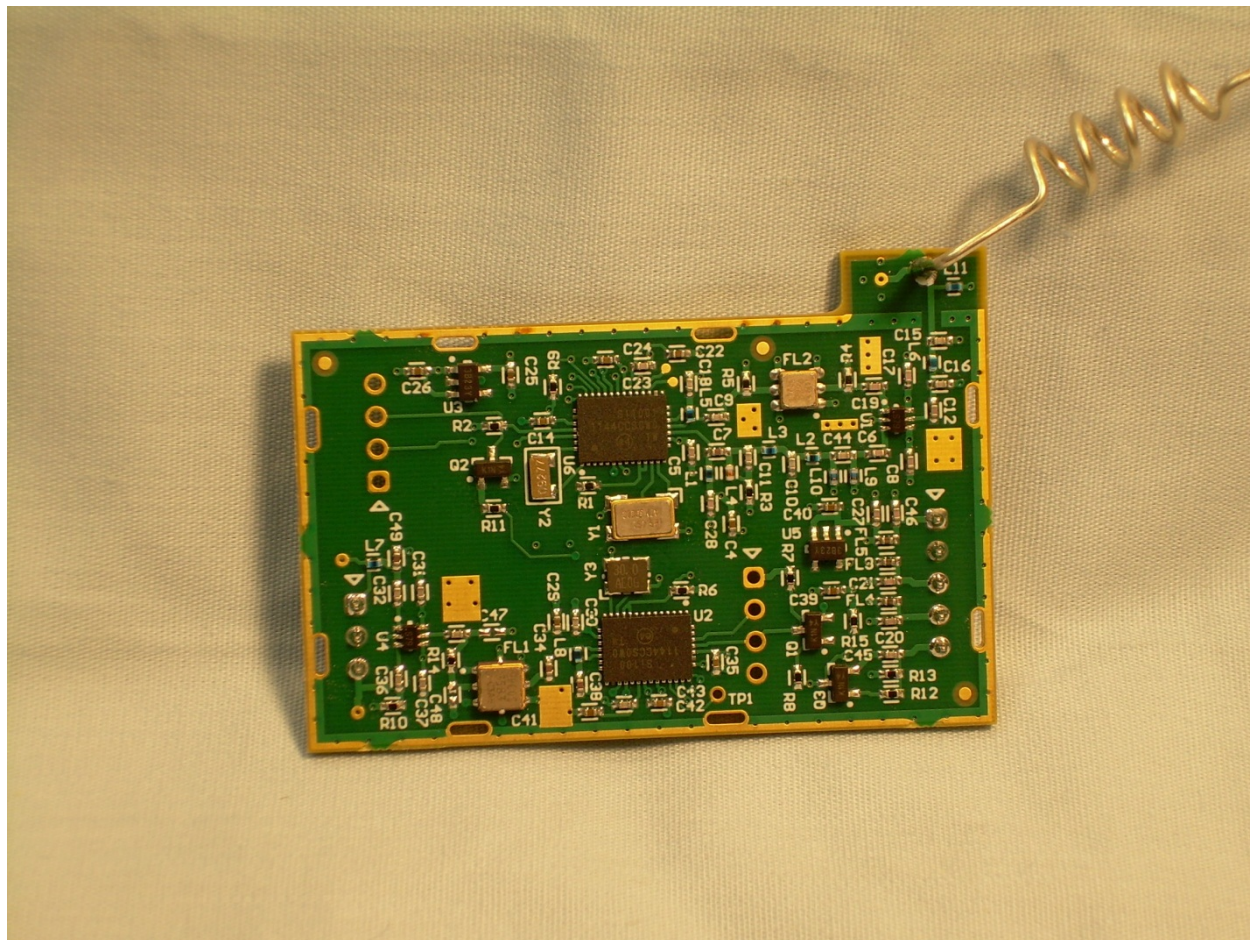
Back View of the FHSS Transceiver Module



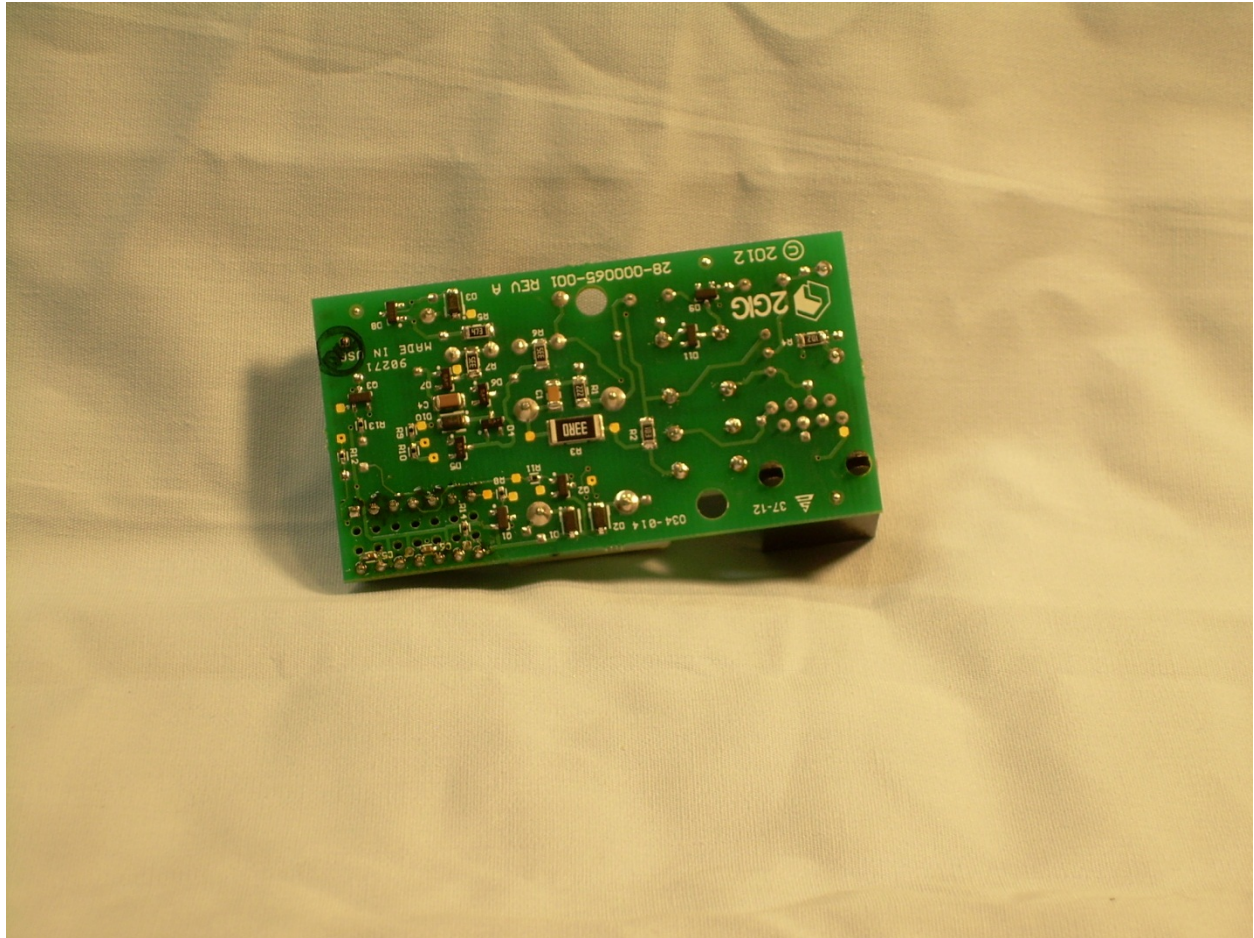
Front View of the FHSS Transceiver



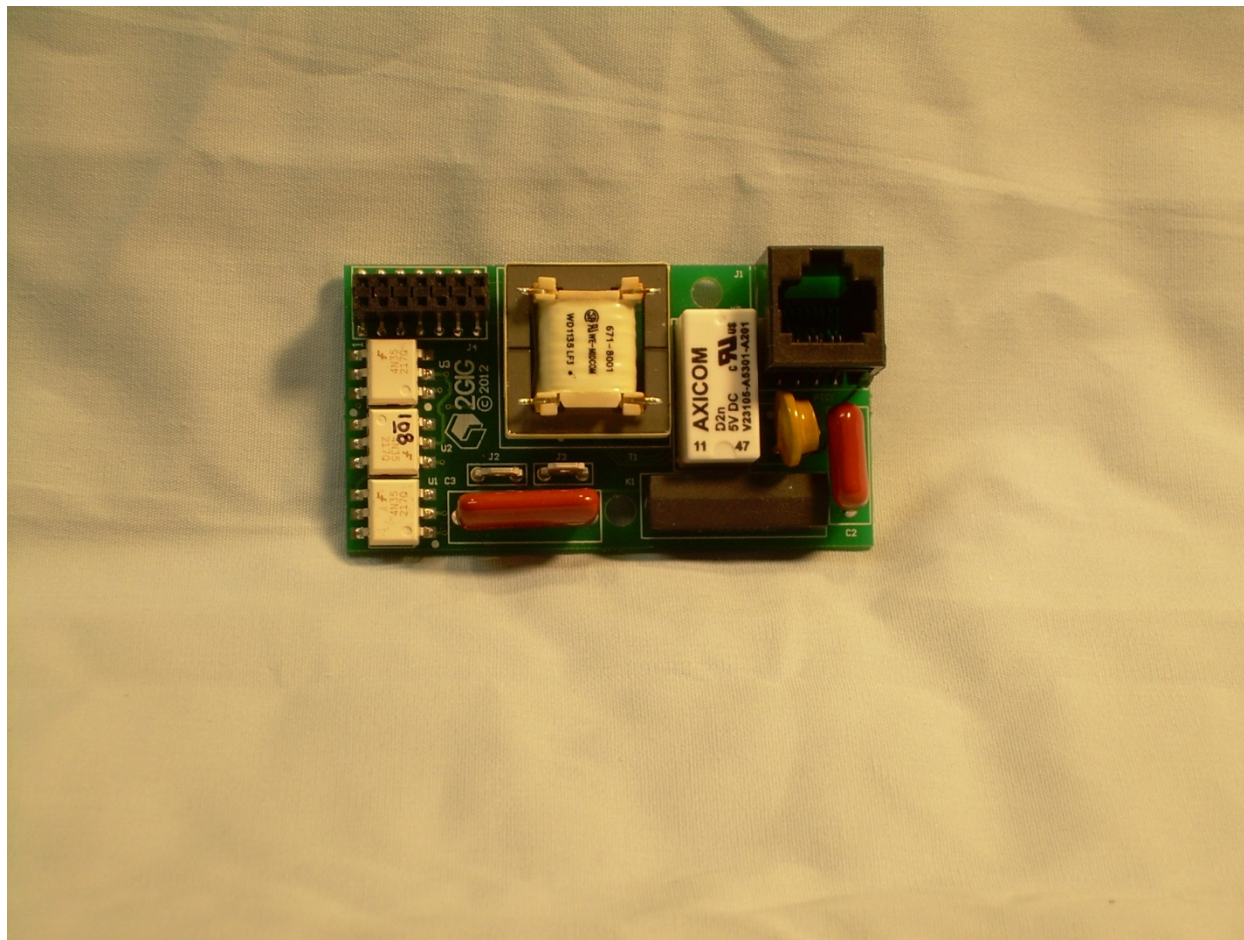
View of the Circuitry Under the RF Shield of the FHSS Transceiver



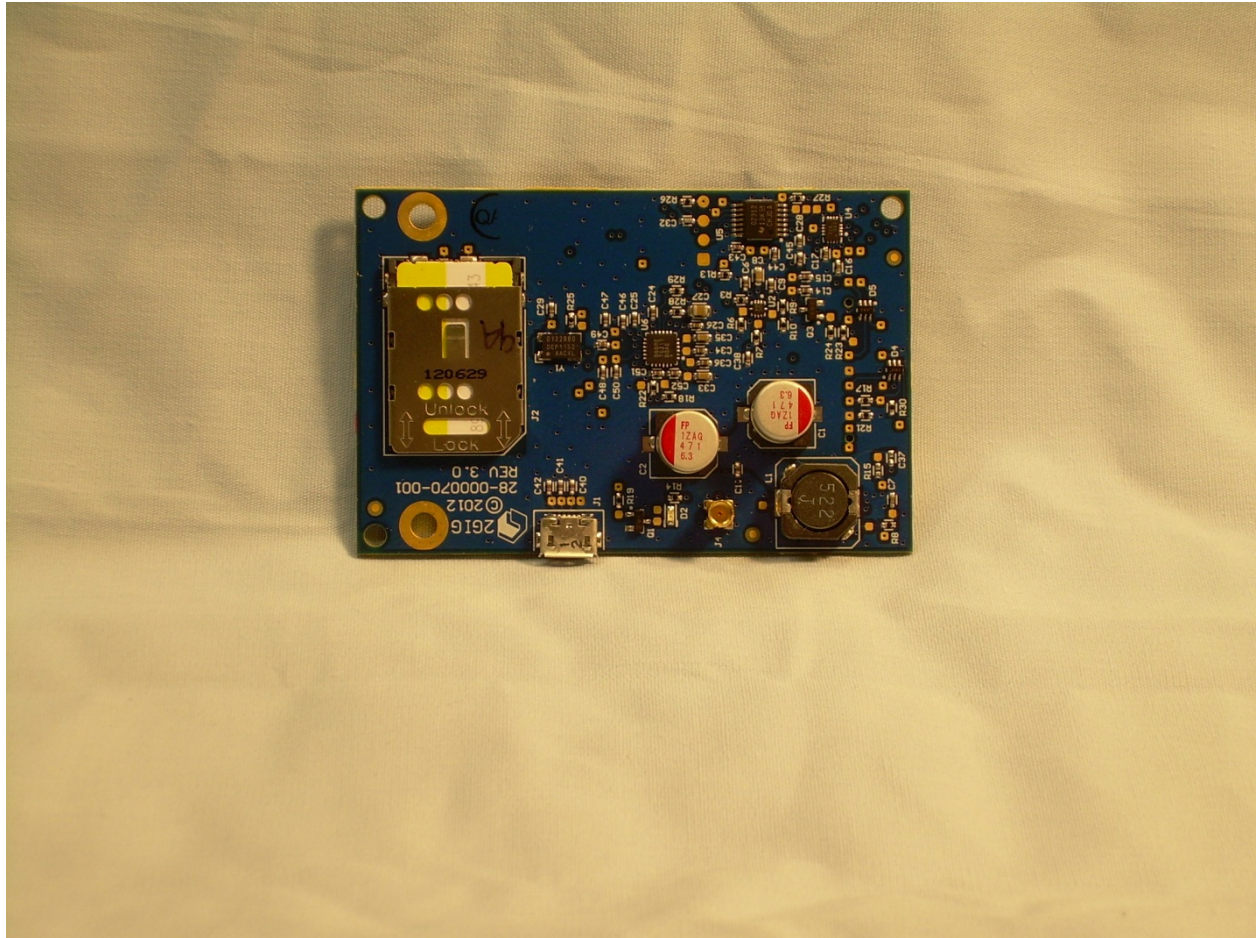
Front View of the POTS PCB



Back View of the POTS PCB



PFront View of the 2G/3G Cell Modem



Back View of the 2G/3G Cell Modem

