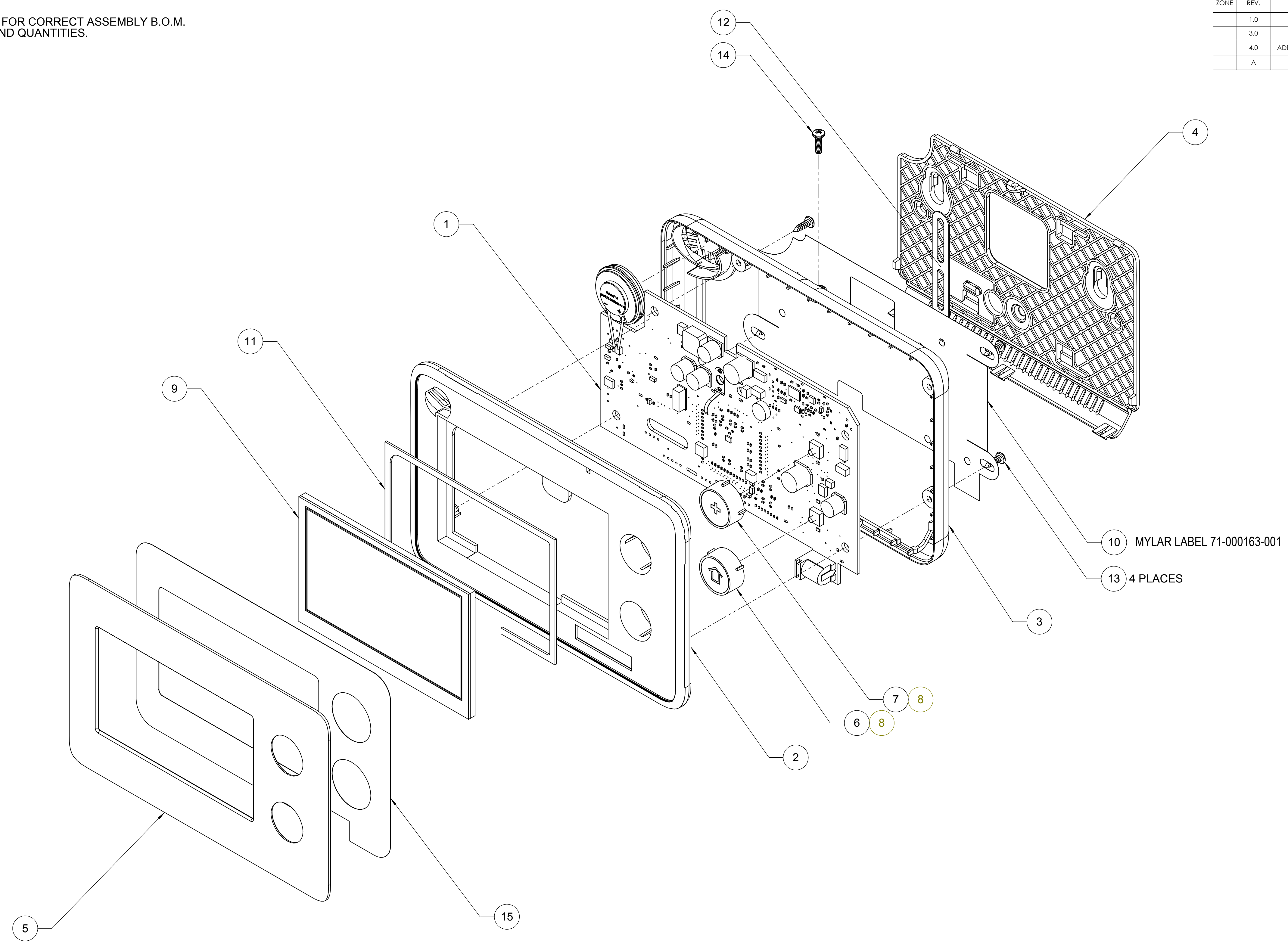


8 7 6 5 4 3 2 1

NOTES: (UNLESS OTHERWISE SPECIFIED)

1. RERFER TO TABLE BELOW FOR CORRECT ASSEMBLY B.O.M. AND PART DESCRIPTION AND QUANTITIES.

REVISIONS				
ZONE	REV.	DESCRIPTION	DATE	APPROVED
	1.0	INITIAL RELEASE	8/3/2012	DSR
	3.0	UPDATE FIELD OF THE DRAWING	3/10/2013	DSR
	4.0	ADDED TABLE AND REMOVED KAPTON TAPE F/N #16	5/03/2013	DSR
	A	PRODUCTION RELEASE	6/28/2013	DSR



ASSEMBLY B.O.M. TABLE			
ITEM NUMBER	PART NUMBER	DESCRIPTION	COMMENT
2	01-000090-001S	KEYPAD TOUCHSCREEN1 WIRELESS 900MHZ SPANISH	
1	01-000090-001	KEYPAD TOUCHSCREEN1 WIRELESS 900MHZ	

UNLESS OTHERWISE NOTED ALL DIMENSIONS ARE INCHES [MM]:		CONFIDENTIAL STATEMENT: THIS DOCUMENT CONTAINS INFORMATION CONFIDENTIAL TO 2GIG TECHNOLOGIES AND MAY NOT BE COPIED IN WHOLE OR PART WITHOUT AUTHORIZATION OF 2GIG TECHNOLOGIES, INC.			
TOLERANCES: DECIMALS ANGLES: ±0.5° .XX±.01 [.3] ROUNDNESS: ±.005 [.13] .XXX±.005 [.13] FLATNESS: ±.005 [.13] CONCENTRICITY: ±.005 [.13]		CAD OPERATOR: D. ROBINSON DATE: 6/21/2012 CHECKED: DATE: APPROVED: DATE: APPROVED: DATE: APPROVED: DATE: APPROVED: DATE:			
MATERIAL: NOTED		FINISH:		SIZE: DRAWING NO.: 74-000090-002 REV.: A	
DO NOT SCALE DRAWING		SCALE: N/A		SHEET: 1 OF 1	

8 7 6 5 4 3 2 1