

REVISIONS

A

REV	DESCRIPTION	DATE	APPROVED
B	PRODUCTION RELEASE	9/27/2016	ECO-TBD

B

NOTES: (UNLESS OTHERWISE SPECIFIED)

1. MFG. PROCESS: PRINTED LABEL OR PAD PRINTING
2. MATERIAL: FASSON 2MIL PET(POLYESTER)NTC/S333/BG50#WH, HIGH GLOSS WHITE UL#MH20557 OR EQUIVALENT.
PAD PRINTING INK: BLACK, LINEAR P/N 213337-002
3. USE ART WORK #10010161.EPS

C



D

SCALE = 2/1

E

UNLESS OTHERWISE SPECIFIED:
 DIMENSIONS ARE INCHES [mm]:
 SURFACE FINISH: NOTED
 TOLERANCES:
 LINEAR: .XX +/- .02 .XXX +/- .010
 ANGULAR: +/- .5 DEG

CONFIDENTIAL STATEMENT:
 THIS DOCUMENT CONTAINS INFORMATION
 CONFIDENTIAL TO NORTEK SECURITY & CONTROL
 AND MAY NOT BE COPIED IN WHOLE OR
 PART WITHOUT AUTHORIZATION OF 2GIG
 TECHNOLOGIES, INC.



DRAWN	D. ROBINSON	DATE	9/27/16
	APPROVED	DATE	

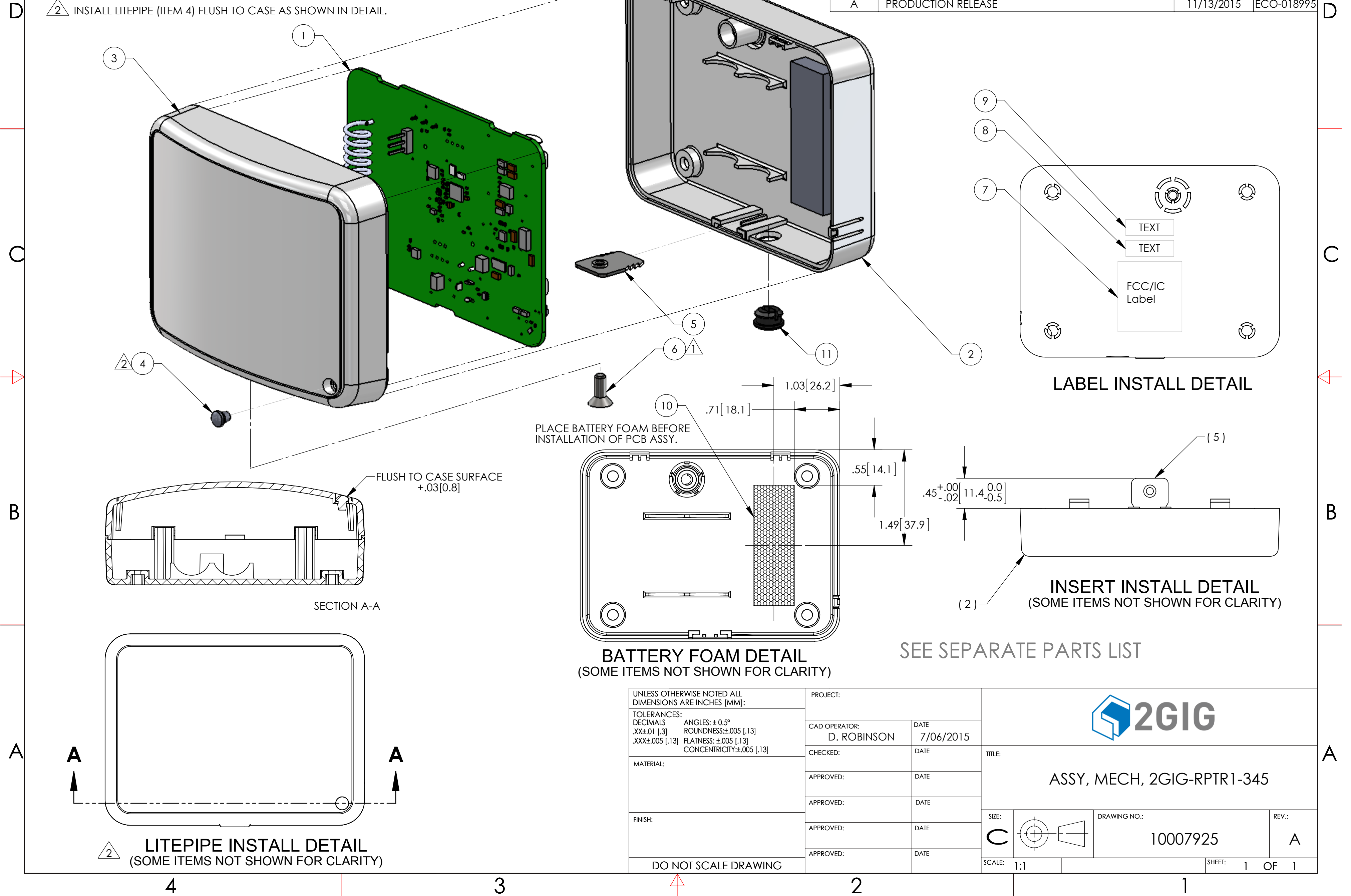
TITLE:	LABEL, REGULATORY 2GIG-RPTR1-345	
DWG NO.	10010161	B
DO NOT SCALE DRAWING		SHEET 1 OF 1

NOTES: (UNLESS OTHERWISE SPECIFIED)

1 TORQUE: 3.5 - 4.0 kfg-cm

2 INSTALL LITEPIPE (ITEM 4) FLUSH TO CASE AS SHOWN IN DETAIL.

REVISIONS			
REV	DESCRIPTION	DATE	APPROVED
X1	INITIAL RELEASE	7/06/2015	
X2	ADDED ITEM #11	10/05/2015	ECO-018846
A	PRODUCTION RELEASE	11/13/2015	ECO-018995



PLACE BATTERY FOAM BEFORE INSTALLATION OF PCB ASSY.

SECTION A-A

BATTERY FOAM DETAIL
(SOME ITEMS NOT SHOWN FOR CLARITY)

INSERT INSTALL DETAIL
(SOME ITEMS NOT SHOWN FOR CLARITY)

SEE SEPARATE PARTS LIST

LITEPIPE INSTALL DETAIL
(SOME ITEMS NOT SHOWN FOR CLARITY)

UNLESS OTHERWISE NOTED ALL DIMENSIONS ARE INCHES [MM]:

TOLERANCES: DECIMALS .XX±.01 [.3] .XXX±.005 [.13]	ANGLES: ± 0.5° ROUNDNESS: ±.005 [.13] FLATNESS: ±.005 [.13] CONCENTRICITY: ±.005 [.13]
MATERIAL:	
FINISH:	

DO NOT SCALE DRAWING

PROJECT:	
CAD OPERATOR: D. ROBINSON	DATE 7/06/2015
CHECKED:	DATE
APPROVED:	DATE
APPROVED:	DATE
APPROVED:	DATE
APPROVED:	DATE

		TITLE: ASSY, MECH, 2GIG-RPTR1-345	
		SIZE: C	DRAWING NO.: 10007925
SCALE: 1:1		REV.: A	SHEET: 1 OF 1

Product Data

Fasson® 50 micron Clear PET NTC/S333/BG50#WH

FACESTOCK

A gloss clear polyester with “print treated” surface for enhanced ink anchorage.

Basis Weight: 70 g/m²± 10% ISO536
Caliper: 0.050 mm ± 10% ISO534

ADHESIVE

A general purpose permanent, acrylic based adhesive.

LINER

A super-calendared white glassine paper with excellent roll label converting properties

Basis Weight: 80 g/m² ± 10% ISO536
Caliper: 0.070mm ± 10% ISO534

TYPICAL PERFORMANCE DATA (N/25mm)

Loop Tack (st,st)-FTM 9: 8.0
20 min 90° Peel (st,st)-FTM 2: 5.0
24 hour 90° Peel (st,st)-FTM 2: 7.5

Minimum Application Temperature: -4°C
Service Temperature Range: -40°C~+149°C

ADHESIVE PERFORMANCE

This is an excellent, general-purpose industrial grade clear adhesive, featuring high initial tack, ultimate adhesion and low adhesive ooze.

S333 is suitable for applications where compliance with FDA 175.105 is required. This section covers applications where for indirect or incidental contact food, cosmetic or drug products.

This product features excellent tear strength, heat resistance, dimensional stability and chemical resistance.

This product is suitable for use in a wide range of durable labeling applications. It is UL recognized for indoor/outdoor service. See file # MH20557 for specific details.

The above does not represent any guarantee or warranty and the Purchaser must independently determine the suitability of the products for the Purchaser's purposes.

PRINTING/CONVERTING

The corona treated face material can be printed by the usual printing techniques, giving good print results with UV curing and solvent based inks for PET.

Ink testing is always recommended before production.

This product can be die cut and stripped at high speeds on most web-fed presses. Harden treated and sharp dies, preferably in flat-bed, are important to ensure smooth conversion.

Need avoid too much re-winding tension to causing bleeding.

It is suitable for automatic dispensing.

Not recommend on the traditional silk screen printing oven drier.

SHELF LIFE

One year when stored at 23±2°C at 50±5% RH.

STATEMENT OF PRACTICAL USE

As with all pressure sensitive materials, this product should be tested thoroughly under end-use conditions to ensure it meets the requirements of the specific application.

APPLICATIONS AND USE

Warranty



	Shanghai	Hong Kong	Guangzhou	Beijing	Tianjin	Chengdu
Tel	+21 6482 1208	+852 2600 5300	+20 8355 5758	+10 8766 3354	+22 2698 3688	+28 8784 8199
Fax	+21 6482 1210	+852 2554 3490	+20 8355 5575	+10 8766 3584	+22 2698 6338	+28 8784 8203

Information concerning Products are based upon tests believed to be reliable but do not represent a guarantee or warranty. Products are provided on the basis that any Purchaser has independently determined the suitability of the Products and Purchaser's purposes. The Company warrants the products to be free from defects in material and workmanship. Should any failure to conform to this warranty appear within one year of delivery (but not afterwards), upon notification thereof within seven (7) days of such appearance and substantiation that the Products have been stored and applied in accordance with the Company standards, the Company shall within a reasonable period correct such defects by providing a suitable replacement without charge at the Company's plant or at the location of the Products (at the Company's election) provided however, if the Company in its sole discretion determines that replacement is not commercially practical, the Company may issue a credit in favour of the Purchaser in an amount not to exceed the purchase price actually paid for the Products. Any implied warranty of merchantability fitness for particular purpose or other warranty of quality, whether express or implied by law, is hereby excluded to the extent permitted by law. In no event shall the Company be liable for any incidental, indirect or consequential damages including, but not limited to, loss of profit, loss of use or loss of capital. The remedies of the Purchaser set forth herein are exclusive, and the total potential liability of the Company arising out of any contract of or from the manufacture, sale, delivery, resale, installation or use of any products shall not exceed the purchase price of the products upon which liability is based.



	Shanghai	Hong Kong	Guangzhou	Beijing	Tianjin	Chengdu
Tel	+21 6482 1208	+852 2600 5300	+20 8355 5758	+10 8766 3354	+22 2698 3688	+28 8784 8199
Fax	+21 6482 1210	+852 2554 3490	+20 8355 5575	+10 8766 3584	+22 2698 6338	+28 8784 8203

www.cn.fasson.com