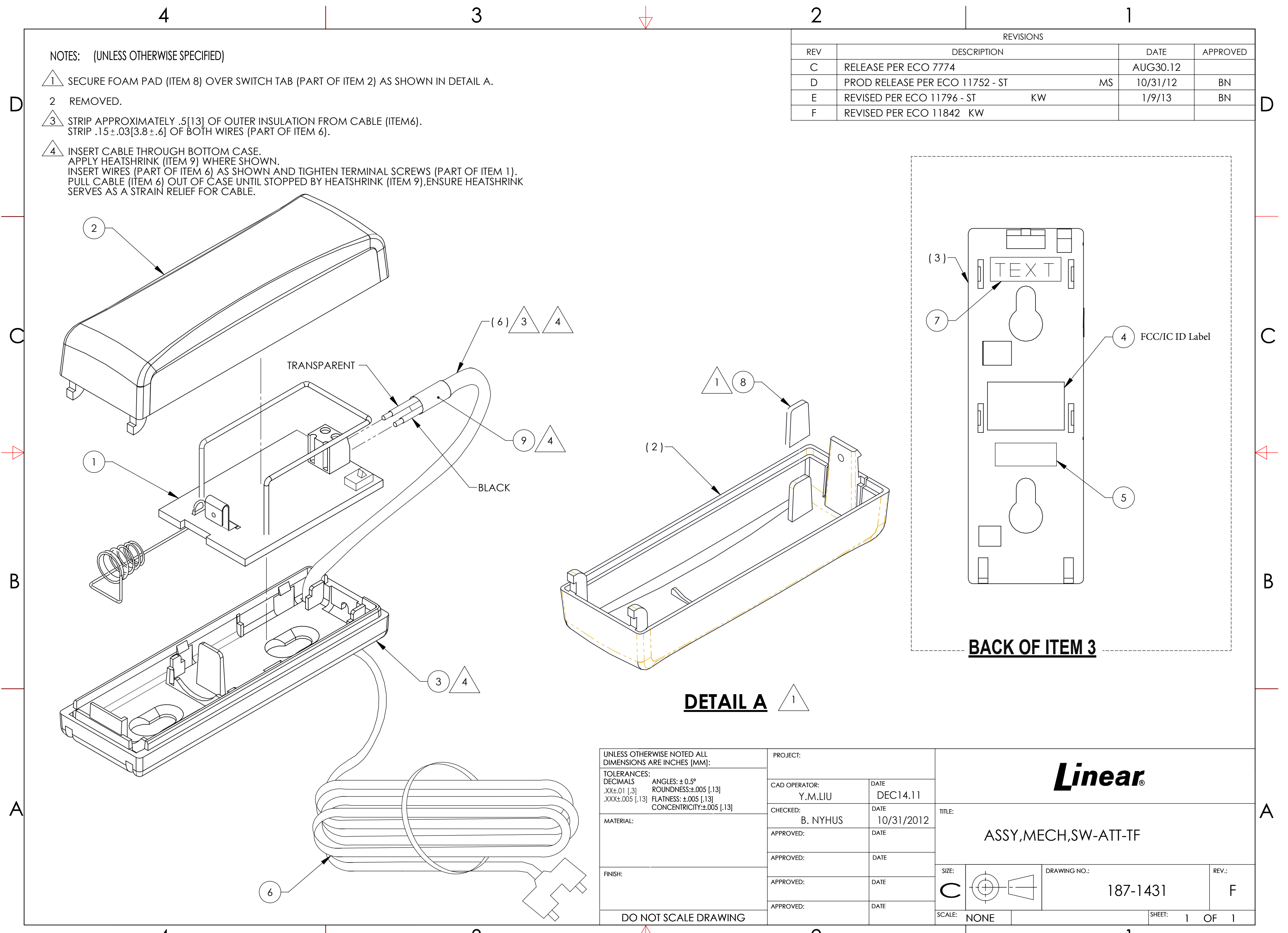


NOTES: (UNLESS OTHERWISE SPECIFIED)

- 1 SECURE FOAM PAD (ITEM 8) OVER SWITCH TAB (PART OF ITEM 2) AS SHOWN IN DETAIL A.
- 2 REMOVED.
- 3 STRIP APPROXIMATELY .5[.13] OF OUTER INSULATION FROM CABLE (ITEM 6). STRIP .15±.03[3.8±.6] OF BOTH WIRES (PART OF ITEM 6).
- 4 INSERT CABLE THROUGH BOTTOM CASE. APPLY HEATSHRINK (ITEM 9) WHERE SHOWN. INSERT WIRES (PART OF ITEM 6) AS SHOWN AND TIGHTEN TERMINAL SCREWS (PART OF ITEM 1). PULL CABLE (ITEM 6) OUT OF CASE UNTIL STOPPED BY HEATSHRINK (ITEM 9). ENSURE HEATSHRINK SERVES AS A STRAIN RELIEF FOR CABLE.

REVISIONS				
REV	DESCRIPTION	DATE	APPROVED	
C	RELEASE PER ECO 7774	AUG30.12		
D	PROD RELEASE PER ECO 11752 - ST	MS 10/31/12	BN	
E	REVISED PER ECO 11796 - ST	KW 1/9/13	BN	
F	REVISED PER ECO 11842 KW			



**DETAIL A** 1

**BACK OF ITEM 3**

UNLESS OTHERWISE NOTED ALL DIMENSIONS ARE INCHES [MM]:	
TOLERANCES:	ANGLES: ± 0.5°
DECIMALS .XX±.01 [.3]	ROUNDNESS: ±.005 [.13]
.XXX±.005 [.13]	FLATNESS: ±.005 [.13]
	CONCENTRICITY: ±.005 [.13]
MATERIAL:	
FINISH:	
DO NOT SCALE DRAWING	

PROJECT:	
CAD OPERATOR:	DATE
Y.M.LIU	DEC14.11
CHECKED:	DATE
B. NYHUS	10/31/2012
APPROVED:	DATE
APPROVED:	DATE
APPROVED:	DATE
APPROVED:	DATE

<b>Linear</b>			
TITLE: ASSY,MECH,SW-ATT-TF			
SIZE: C	DRAWING NO.: 187-1431	REV.: F	
SCALE: NONE	SHEET: 1 OF 1		