

numera™

2GIG

2GIG-F1-345

PERSONAL HELP BUTTON—FALL DETECTOR PENDANT

INSTALLATION INSTRUCTIONS

The Personal Help Button—Fall Detector Pendant (2GIG-F1-345) is a battery powered pendant style transmitter, designed for use with compatible receivers in the 2GIG Go!Control and Numera product lines.

The transmitter is small, lightweight, and water-resistant, and is supplied with an adjustable breakaway release lanyard intended for safe operation and comfortable wear. When a fall is detected, or when the pendant's button is pressed, a digitally coded wireless signal is sent to the companion Console. The signal indicator on the transmitter lights green when the unit is activated. When activated using the pendant's button, the transmitter can send a signal for up to 30 seconds per activation. To ensure sending a complete signal, press the pendant's button for a minimum of two seconds. The 2GIG-F1-345 transmitter is factory set to a unique code, so no field coding is required. Receivers must be programmed to the transmitter's code before system testing and operation. Refer to the receiver's instructions for details on programming.

After the first activation, the transmitter will send a status signal approximately every 70 minutes. The transmitter also tests for a low battery. If the battery tests low, a low battery signal is sent. If the transmitter is activated with a low battery, the signal indicator will light red.

The transmitter is sealed to provide water-resistance. The unit's battery is not replaceable. The transmitter should be disposed of properly at the end of its battery life. Please contact your service provider for environmentally responsible options.

Automatic Call if a Fall is Detected

When the Personal Help Button—Fall Detector Pendant detects a potential fall, it is designed to automatically signal the system to send an "Emergency" report to the call center. The systems provide local siren tones or annunciations, and can be set up to initiate a two-way voice verification call through configuration settings.

IMPORTANT: The system requires adequate battery charge communication connection (either land-line or cellular) to make an emergency call. Some falls may not be detected even with adequate battery charge and communication connection.

IMPORTANT: SAFETY INFORMATION

If you require assistance at any time, or if you experience a fall that causes actual or potential injury, manually push the Call Button once and do not wait for the system to automatically place the call.

Suggestions for Best Fall Detection Performance

- 1 While the fall detection system performs well, no such system is 100% reliable.
- 2 The lanyard length should be adjusted for each user: The pendant is designed for optimum performance when worn high on the sternum (breastbone), and under clothing when practical, to minimize free-swinging movement of the device when worn.
- 3 The pendant is designed to allow users to move through most routine movements, called "Activities of Daily Living" (ADL),

without triggering a fall event, to avoid sending a nuisance emergency report to the monitoring center.

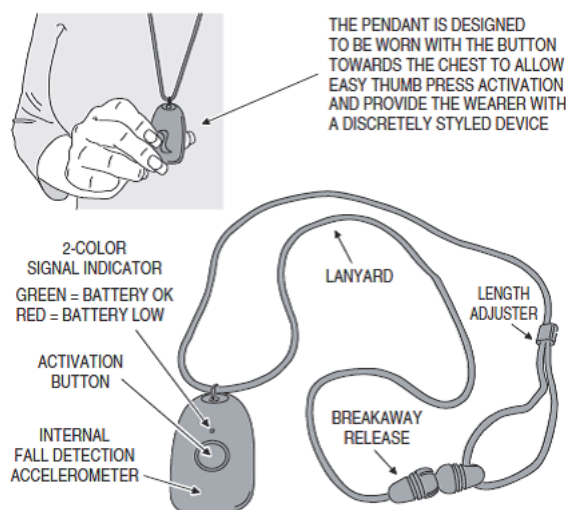
- 4 The system is not designed to be used while exercising. Vigorous movements, such as jumping, or movements that cause the pendant to swing and stop abruptly may trigger the fall detector to send an emergency report. Users should talk with their caregivers and service providers about the most effective use of the system for their activities.
- 5 Users should be advised of what to do if a fall is detected and reported as an "Emergency" event to the center.
 - Some routine activities which are not fall events may trigger the fall detector to send an "Emergency" report.
 - If a fall event is reported, the system will provide a siren and spoken voice prompts to alert the user that the "Emergency" call is being placed.
 - Systems with fall detection should be enabled for two-way voice communication so that users can stay on the line through two-way voice verification with monitoring center personnel.

Features

Enabling Status & Programming System Test

The Personal Help Button can be programmed by installers to work with 2GIG Security Panels as the (08) 24-Hour Auxiliary Alarm sensor type and uses the equipment code: (0868) 2GIG Panic Button Remote. For instructions on programming wireless sensors, see the *Go!Control Panel Installation & Programming Guide*, the *PERS-4200X Series Installation & Operation Instructions*, and the *Numera Libris Hub Instructions*.

Figure 1 Personal Help Button—Fall Detector Pendant



Box Contents

Verify that the package includes the following:

- 1—Personal Help Button—Fall Detector Pendant
- 1—Adjustable Lanyard with Breakaway Release

Turning the Battery Supervisor ON

The Personal Help Button—Fall Detector Pendant ships with a built-in timer that expires seven (7) days after its date of manufacture. After this timer expires, the battery supervisor will automatically turn ON after you press the Personal Help Button—Fall Detector Pendant for the first time. When you release the button, its LED indicator flashes GREEN to indicate that the battery supervisor is working and active.

Every 70 minutes, the transmitter automatically tests itself for a low battery. If the battery tests low, a low battery signal is sent to the 2GIG Security Panel and the LED indicator on the Personal Help Button—Fall Detector Pendant. When the LED illuminates RED, the unit should be replaced.

IMPORTANT: Because the transmitter is sealed to provide water-resistance, the unit's battery is not replaceable. The expected battery-life for the device is approximately five (5) years under normal operating conditions (for example, when supervision is enabled and the Personal Help Button—Fall Detector Pendant is used for one five (5) second manual activation per week).

Activating an Emergency Alarm with the Personal Help Button—Fall Detector Pendant

Pressing the button on the transmitter sends a digitally-coded wireless signal to the receiver indicating an alarm condition.

IMPORTANT: To ensure that the button sends a complete signal, always press and hold the transmitter button for a minimum of two (2) seconds.

LED INDICATORS

Steady GREEN while button down	Good battery
Steady RED while button down	Low battery
Flashing GREEN after button release	Battery supervision ON; good battery
Flashing RED after button release	Battery supervision ON, low battery

SPECIFICATIONS

Wireless Signal Range	500 ft (152.4 m), open air, with 2GIG Wireless Security Panel
Code Outputs	Alarm; Supervisory; Low Battery
Transmitter Frequency	345.00 MHz (crystal controlled)
Unique ID Codes	Over one (1) million different code combinations
Supervisory Interval	70 minutes (+/- 20%)
LED Indicators	GREEN: Good Battery RED: Low Battery (Indicates the unit must be replaced)
Transmitter Dimensions (W x H x D)	1.18 x 1.42 x 0.5 in (3.0 x 3.6 x 1.2 cm)
Housing Material	ABS Plastic
Color	Grey
Operating Temperature	32° to 122° F (0° to 50° C)
Water Resistance	To IPx7 rating at depth of 1M for 30 minutes
Battery	One (1) CR 2032 (not replaceable)
Regulatory Listings	ETL, FCC, IC

IMPORTANT: Test this system weekly! The manufacturer strongly recommends that you test this equipment frequently. Over a period of time, no electronic product is better than the inspection and maintenance it receives. Therefore, from the time of installation, it is absolutely necessary to test the system at least once a week.

IMPORTANT: SAFETY INFORMATION

Emergency Reporting Systems are not a replacement for regular contact with caregivers or access to an alternative means of placing an emergency call.

While the fall detection system performs well, no such system is 100% reliable. If you experience a fall that causes actual or potential injury, do not wait for the automatic call. You should always press the Call Button manually in an emergency if you are able.

The product is designed to be highly water-resistant, not waterproof. Usage other than as directed may result in the inability to place a call, automatically detect a fall, and/or properly locate you automatically during an emergency.

Do not modify or dismantle the product at any time, as this will void the warranty. The battery is not designed to be removed or replaced. There is a risk of explosion if the battery is tampered with, replaced with an incorrect type, or manipulated in any way.

WARNING

TO REDUCE THE RISK OF SEVERE INJURY OR DEATH TO PERSONS, REVIEW THIS IMPORTANT SAFETY INFORMATION PRIOR TO USE.

Nortek Security & Control LLC is issuing this Warning to all subscribers using the 2GIG Personal Help Button transmitters.

Nortek Security & Control LLC manufactures and sells a number of different personal emergency transmitters that consist of the receivers and one or more transmitters. The Personal Help Button may be worn as a pendant on an adjustable lanyard that can be worn around the neck. **IF YOU WEAR THE LANYARD AROUND YOUR NECK AND IT BECOMES ACCIDENTALLY ENTANGLED, IT MAY PRESENT A CHOKING OR STRANGULATION HAZARD THAT COULD RESULT IN SERIOUS INJURY OR DEATH.**

Use only the provided lanyard. To reduce risk of strangulation, the lanyard is designed to break apart under certain conditions. Any cord worn around the neck, however, can pose a risk of strangulation, including the possibility of serious injury and death. Users and caregivers should exercise care with the lanyard to ensure it does not get caught or tangled in wheelchairs, walkers, and other such equipment.

The Personal Help Button is most commonly used by elderly subscribers and others who may have limited mobility, and this risk applies especially to subscribers who may use wheelchairs, walkers, beds with guard rails, or similar objects with protrusions on which a transmitter lanyard could become entangled.

Because the Personal Help button can be worn as a pendant, Nortek Security & Control urges users to consult with their caregivers or service provider to determine which style is most appropriate for them. It is important for users to consider each style before making an informed choice regarding the most suitable method for wearing their transmitter.

To report any issues related to your Personal Help button and/or any of its components, contact your dealer.

REGULATORY INFORMATION



FCC Notice

This device complies with Part 15 of the FCC's Rules. Operation is subject to the following two conditions:

- 1 This device may not cause harmful interference, and
- 2 This device must accept any interference received, including interference that may cause undesired operation.

This equipment has been tested and found to comply with the limits for a Class B digital device, pursuant to Part 15 of the FCC Rules. These limits are designed to provide reasonable protection against harmful interference in a residential installation.

This equipment generates, uses and can radiate radio frequency energy and, if not installed and used in accordance with the instructions, may cause harmful interference to radio communications. However, there is no guarantee that interference will not occur in a particular installation. If this equipment does cause harmful interference to radio or television reception, which can be determined by turning the equipment off and on, the user is encouraged to try to correct the interference by one or more of the following measures:

- Reorient or relocate the receiving antenna.
- Increase the separation between the equipment and receiver.
- Connect the equipment into an outlet on a circuit different from that to which the receiver is connected.
- Consult the dealer or an experienced radio/TV technician for help.

~~To satisfy FCC/IC RF exposure safety requirements, a separation distance of 20 cm or more should be maintained between this device and person's body (excluding extremities: hands, wrists, feet, and ankles).~~

NOTE: Any changes or modifications not expressly approved by the party responsible for compliance could void the user's authority to operate this equipment.

Industry Canada (IC) Compliance

This device complies with Industry Canada license-exempt RSS standard(s). Operation is subject to the following two conditions: (1) this device may not cause interference, and (2) this device must accept any interference, including interference that may cause undesired operation of the device.

Le présent appareil est conforme aux CNR d'Industrie Canada applicables aux appareils radio exempts de licence. L'exploitation est autorisée aux deux conditions suivantes:

- 1 l'appareil ne doit pas produire de brouillage, et
- 2 l'utilisateur de l'appareil doit accepter tout brouillage radioélectrique subi, même si le brouillage est susceptible d'en compromettre le fonctionnement.

This Class B digital apparatus complies with Canadian ICES-003.

Cet appareil numérique de la classe B est conforme à la norme NMB-003 du Canada.

LIMITED WARRANTY

This Nortek Security & Control product is warranted against defects in material and workmanship for two (2) years. This warranty extends only to wholesale customers who buy direct from Nortek Security & Control LLC or through Nortek Security & Control LLC's normal distribution channels. Nortek Security & Control LLC does not warrant this product to consumers. Consumers should inquire from their selling dealer as to the nature of the dealer's warranty, if any.

There are no obligations or liabilities on the part of Nortek Security & Control LLC for consequential damages arising out of or in connection with use or performance of this product or other indirect damages with respect to loss of property, revenue, or profit, or cost of removal, installation, or reinstallation. All implied warranties for functionality, are valid only until the warranty expires. This Nortek Security & Control LLC Warranty is in lieu of all other warranties expressed or implied.

All products returned for warranty service require a Return Authorization Number (RA#). Contact Returns at 1-855-546-3351 for an RA# and other important details.

This transmitter is compatible with 2GIG Go!Control panels, and PERS4200X consoles operating at 345 MHz.



2GIG

Nortek Security & Control LLC

1950 Camino Vida Roble, Suite 150
Carlsbad, CA 92008-6517 USA



For technical support in the USA and Canada:

Dial: 855-2GIG-TECH (855-244-4832)

Email: 2gigtechsupport@nortek.com

Visit www.2GIG.com or dealer.2gig.com technical support hours of operation

For technical support outside of the USA and Canada:

Contact your regional distributor

Visit www.nortekcontrol.com for a list of distributors in your region

10010206A

