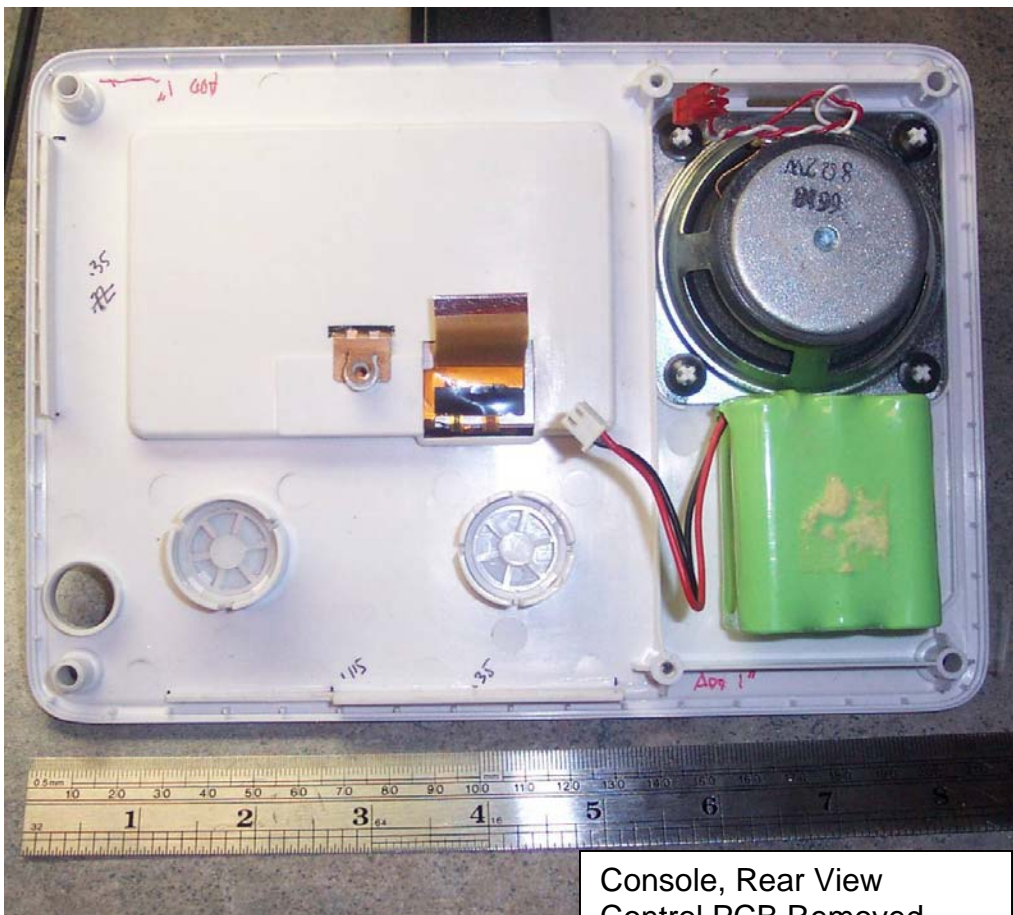


Console, Rear View  
w/shields installed.

back removed



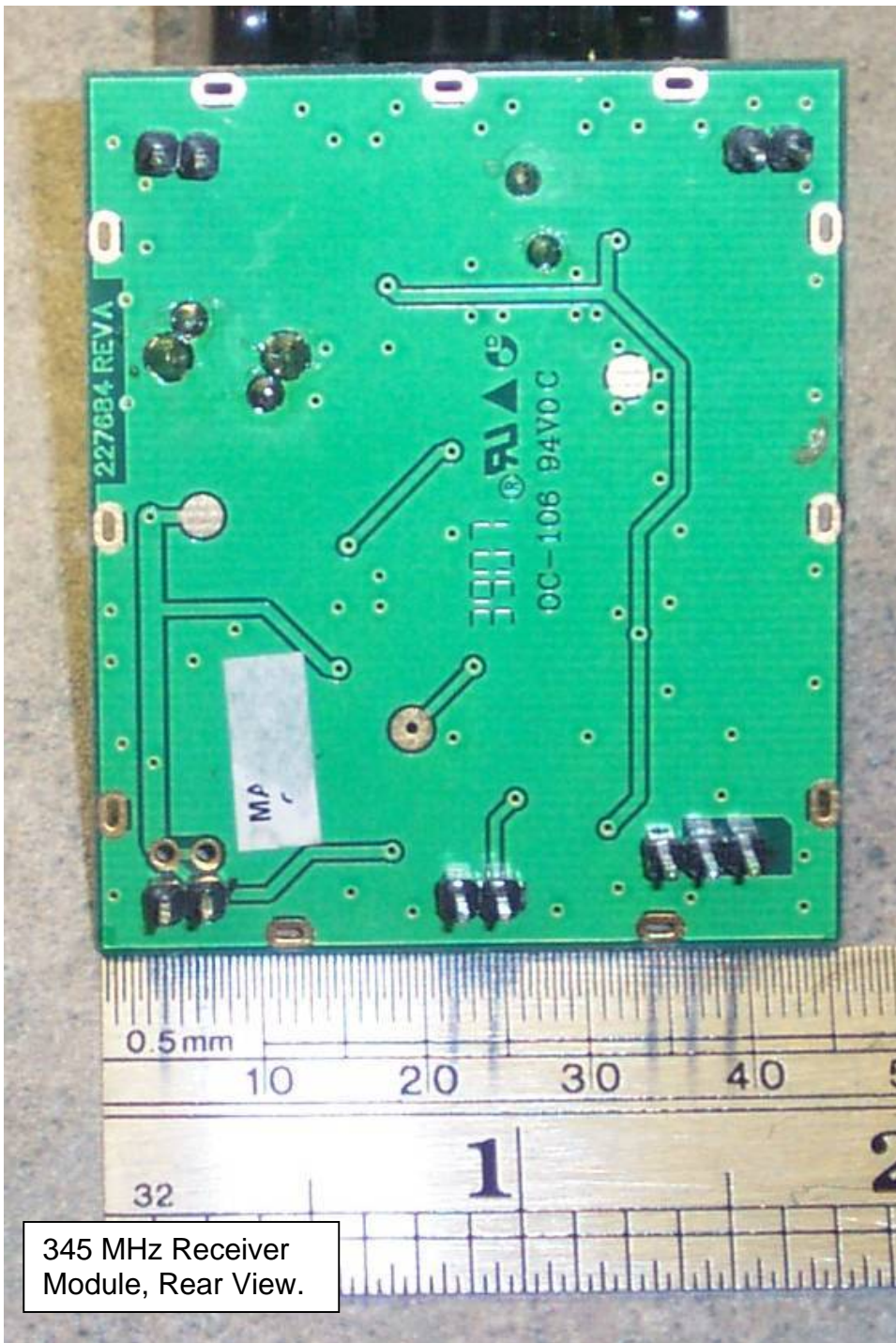
Console, Rear View  
Control PCB Removed

circuits removed from front, backside.



artwork removed from front.

Console, Front View  
Decorative Product Name  
Panel Removed



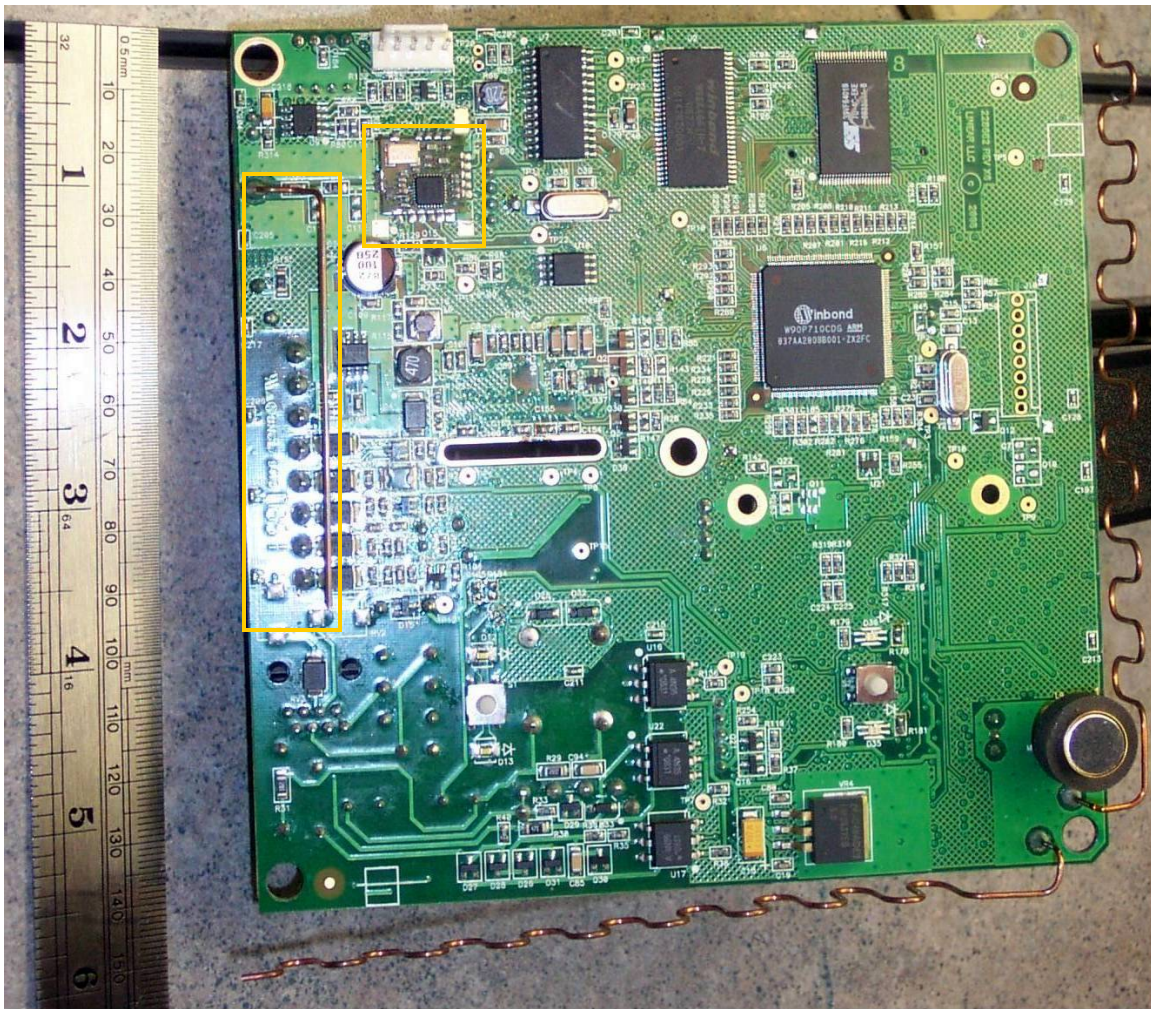
345 MHz Receiver  
Module, Rear View.





345 MHz Receiver Module.  
Shield Removed for clarity. Component Side View.

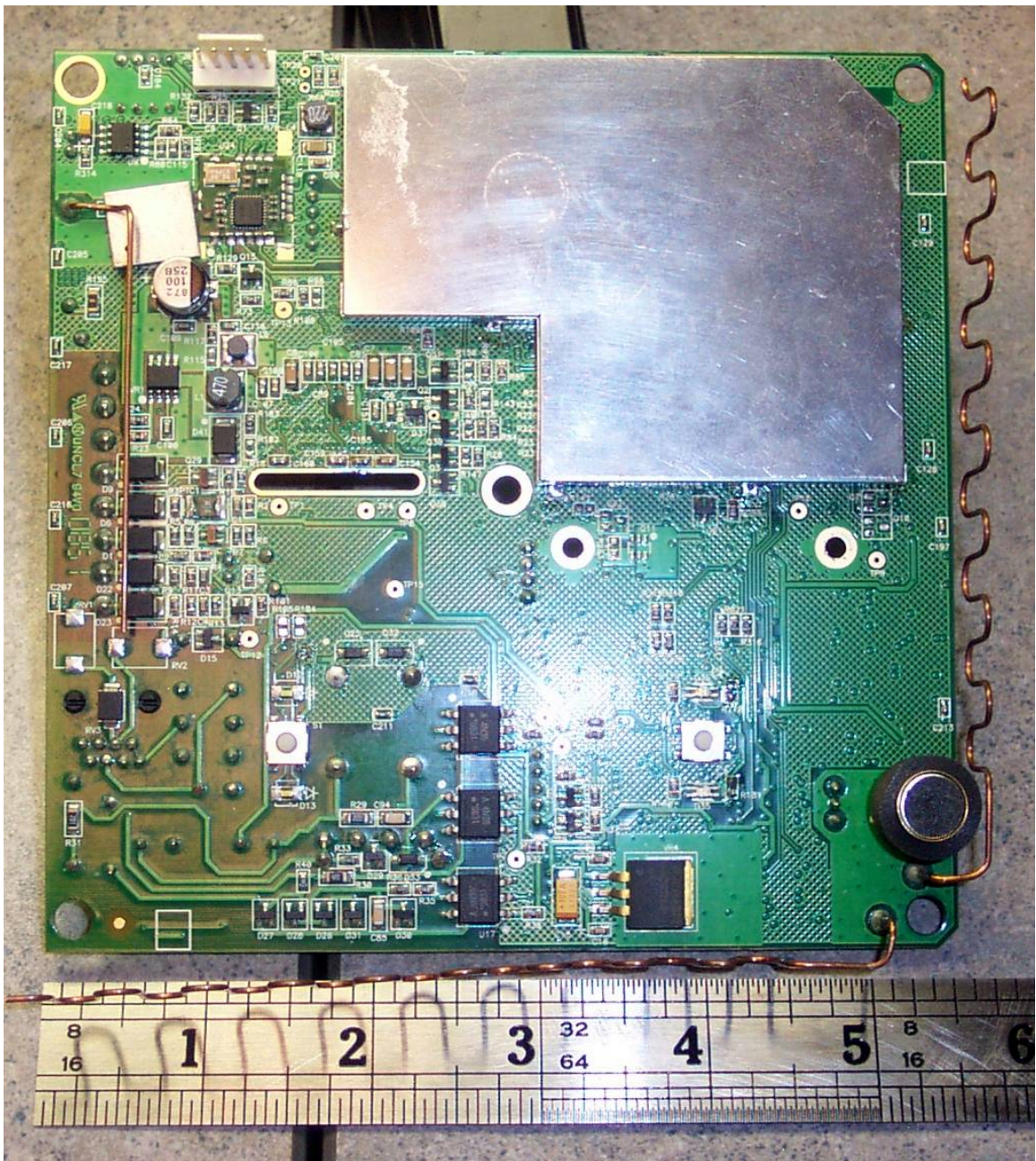




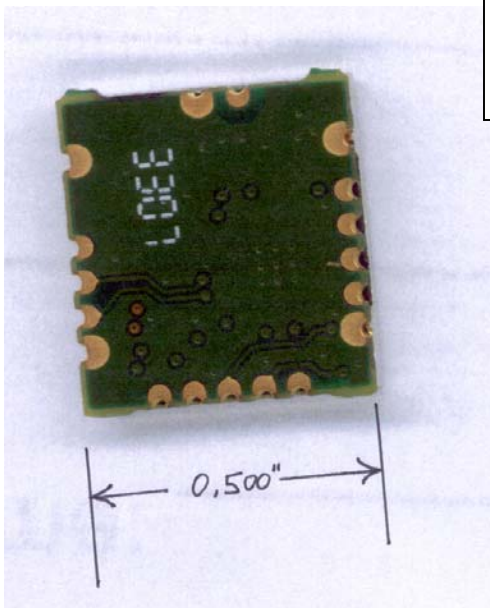
Console Control PCB, Side 1.  
Modules and shields removed for clarity.

Indicated areas are the 908.4 MHz Z-  
Wave antenna and Z-Wave transmitter  
module. (Yellow boxed rectangles)





Console Control PCB, Side 1  
Shields installed.

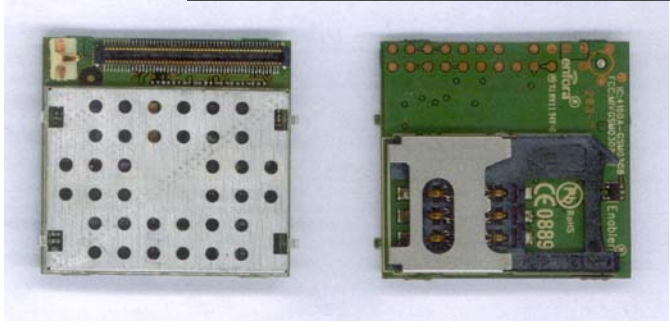
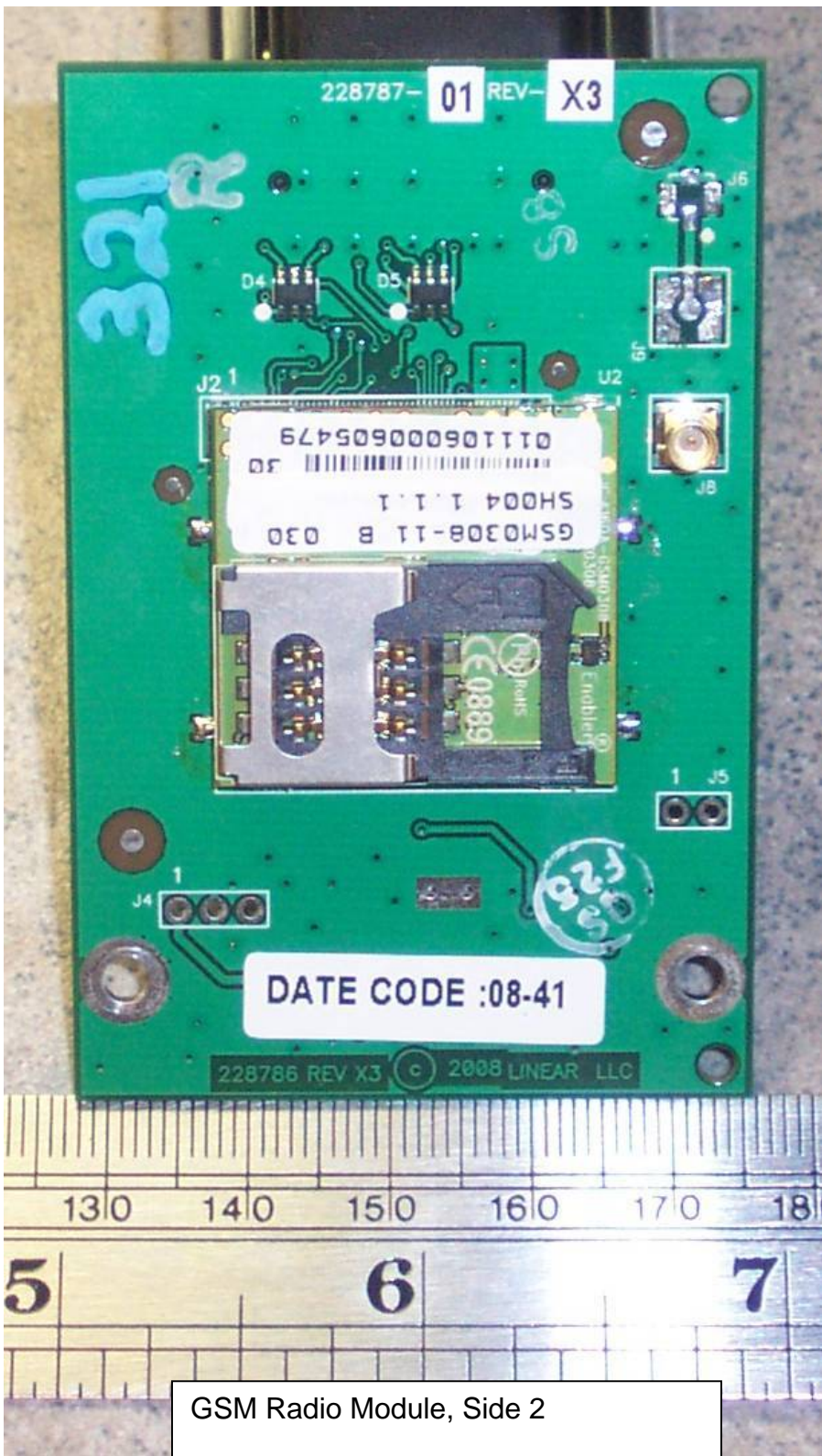




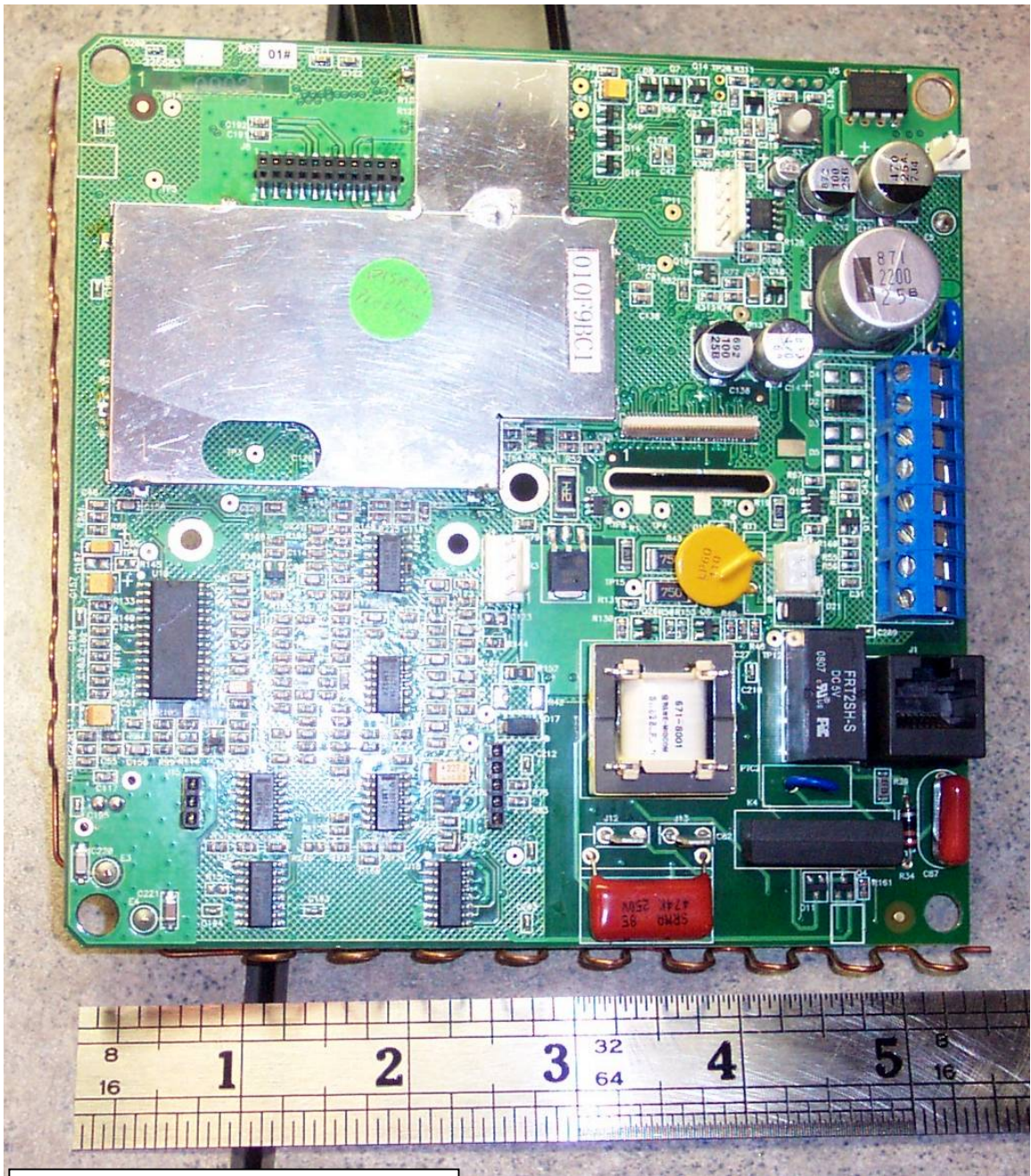


GSM Radio Module, Side 1.



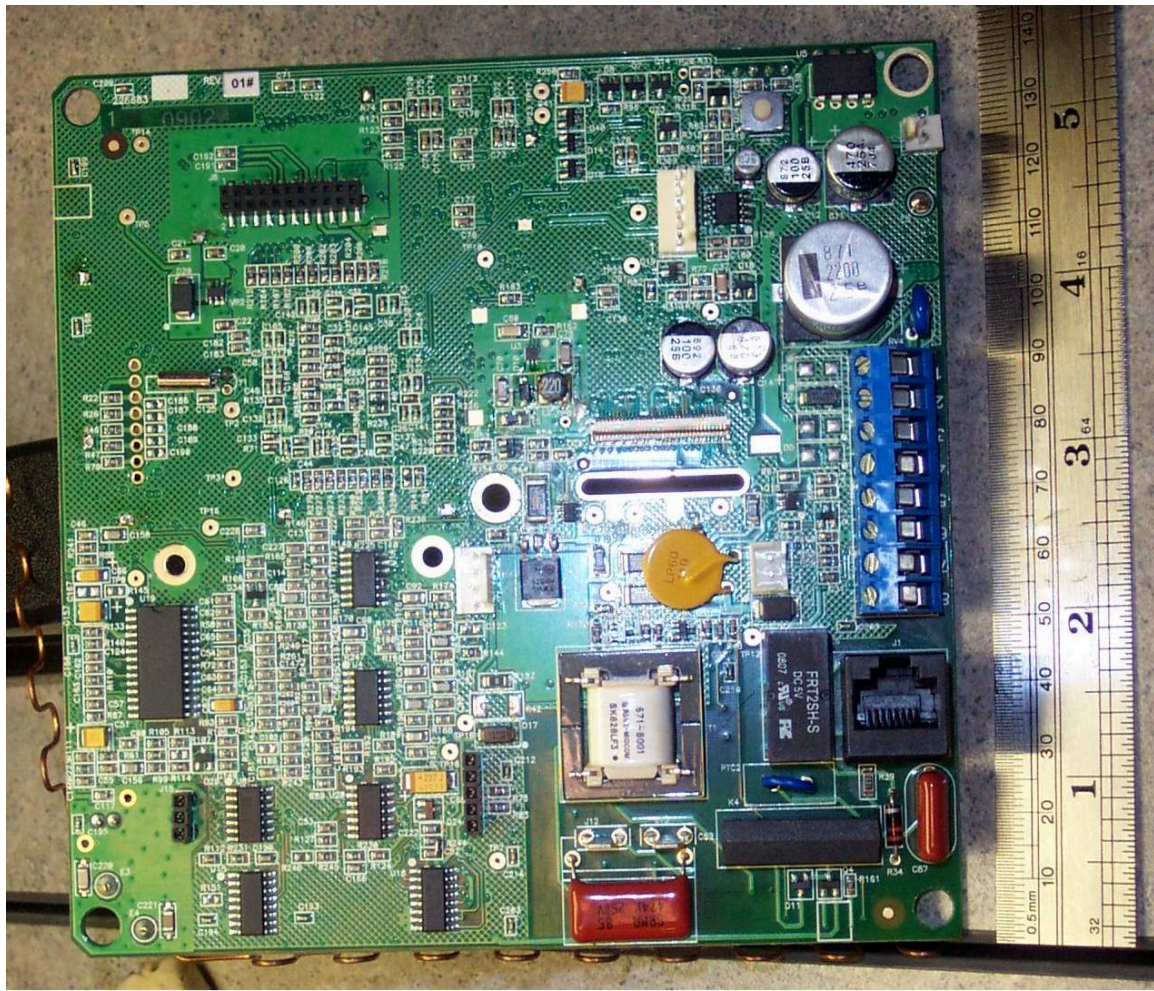






Console Control PCB, Side 2  
Shields Installed.





Console Control PCB, Side 2  
Shields Removed for clarity