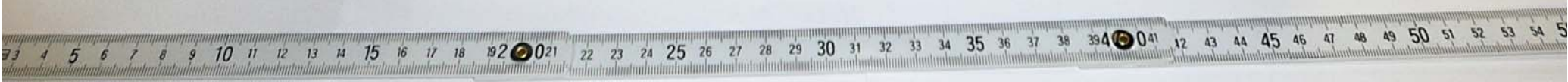
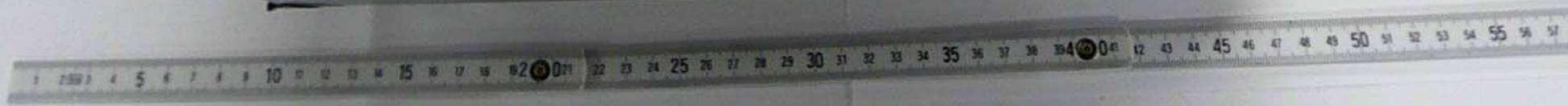




VGA No 1 IN    VGA No 1 OUT  
PA No 1 IN    PA No 1 OUT  
406.2 MHz

VGA No 2 IN    VGA No 2 OUT  
PA No 2 IN    PA No 2 OUT  
380.1 MHz













CMPR-008Q    SAMPLE **1**    3/May/2011  
COMPROD    FERNANDO APOLINARIO  
FCC Part 90 & IC RSS-131 + RSS-310 - Amplifier (booster)  
UHF Amplifier Module, 450-512 MHz (FCC & IC)  
Modulation type F3E & F1D (Channel spacing: extender)

