



Uplink - VGA



Uplink - VGA



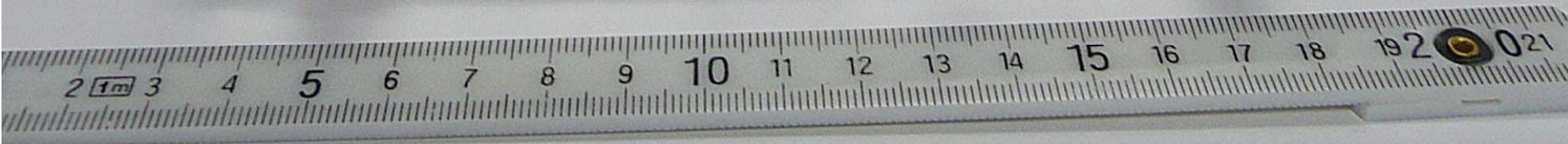


Uplink - VGA



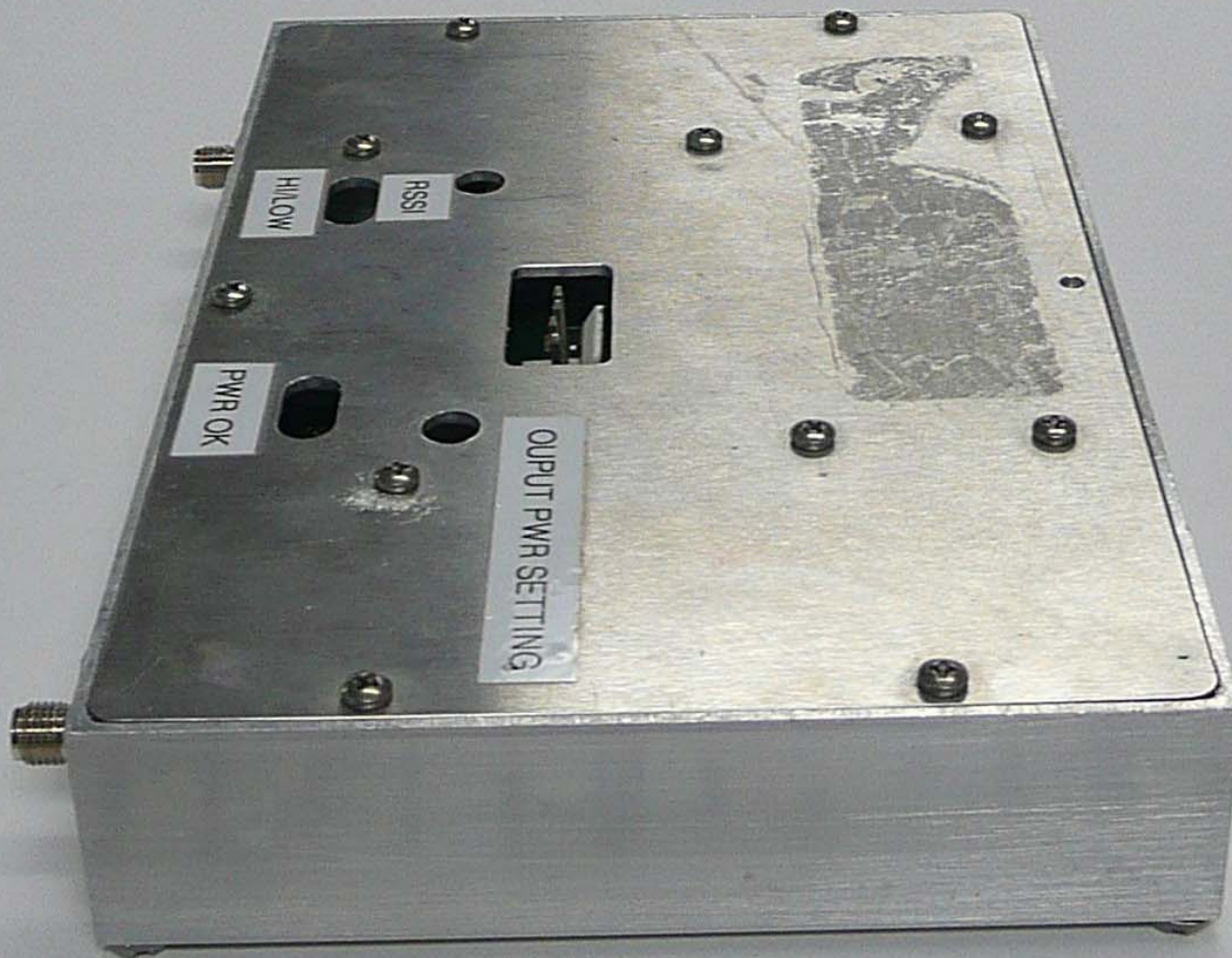


Uplink - VGA



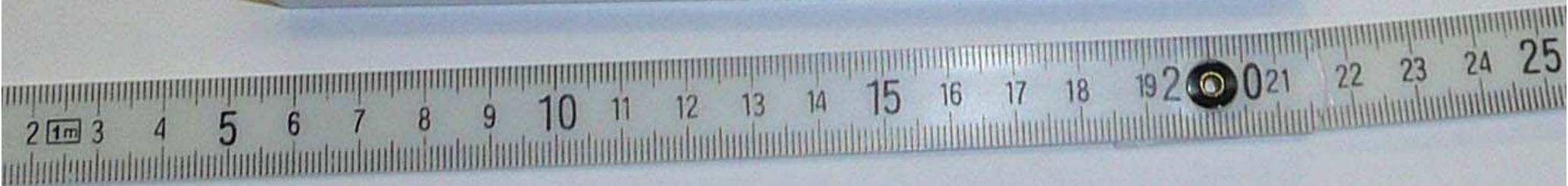


Uplink - VGA



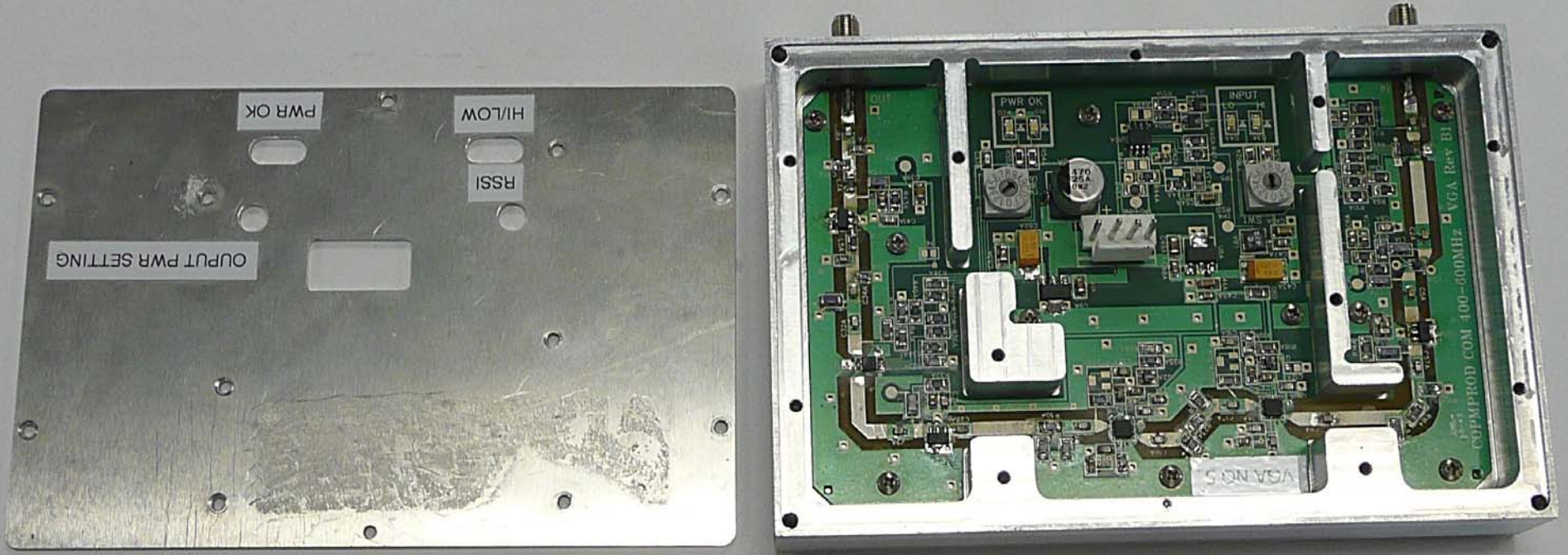


Uplink - VGA



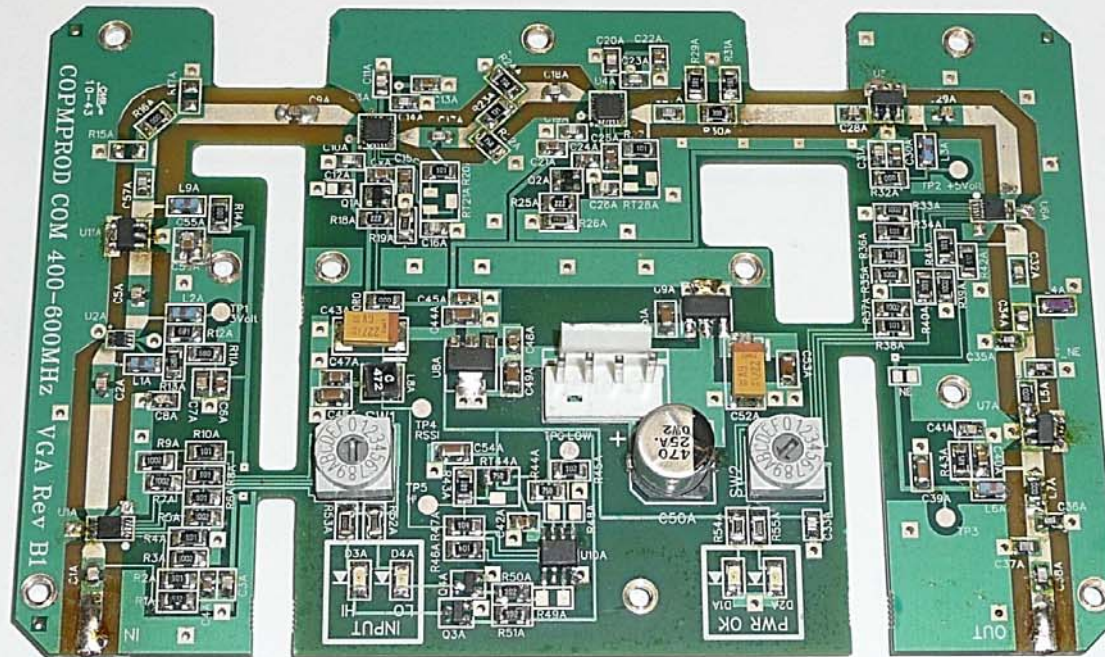


Uplink - VGA



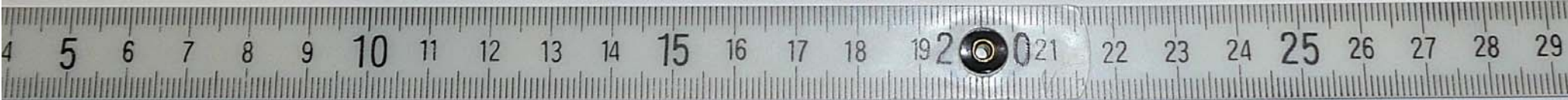
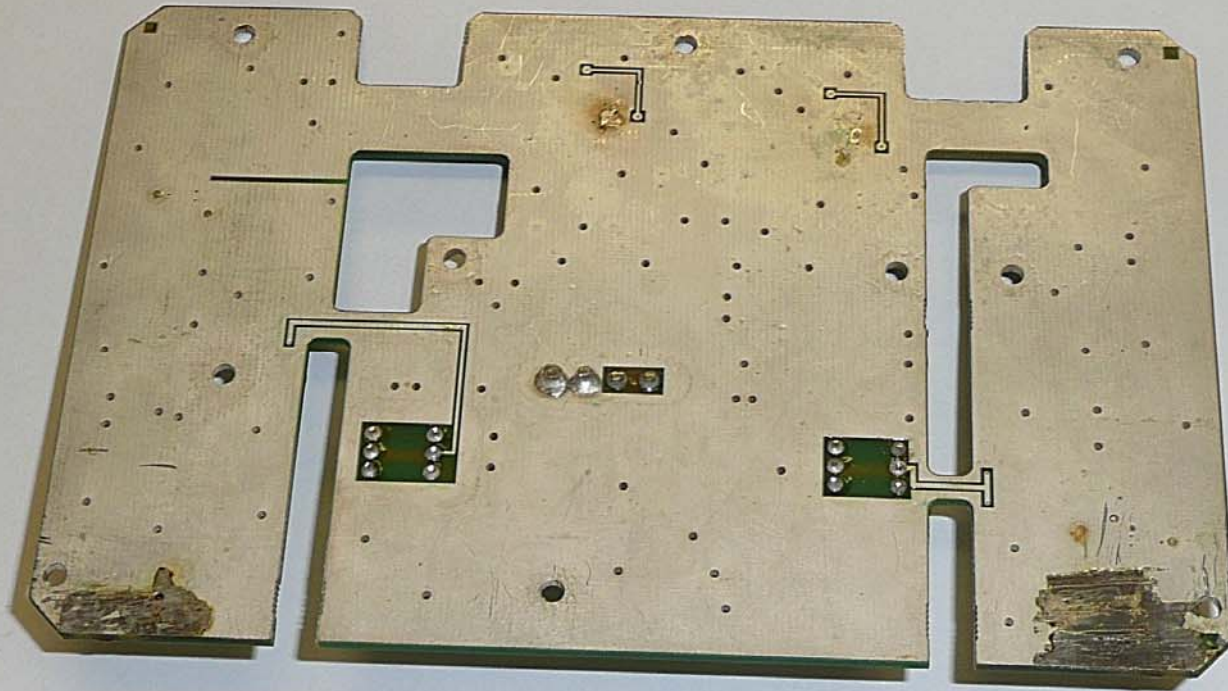


Uplink - VGA



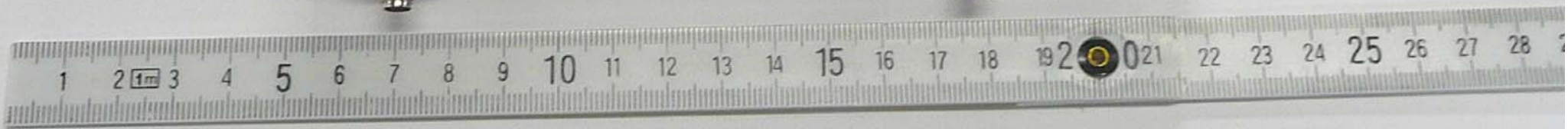


Uplink - VGA



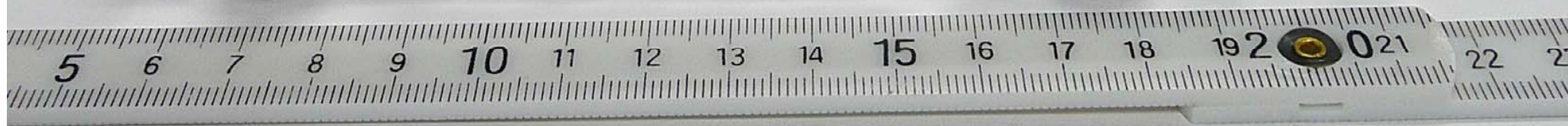


Uplink - PA



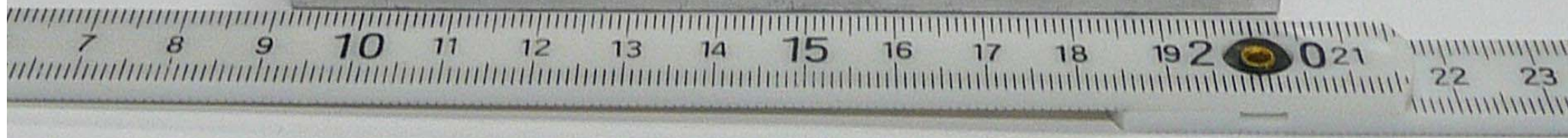
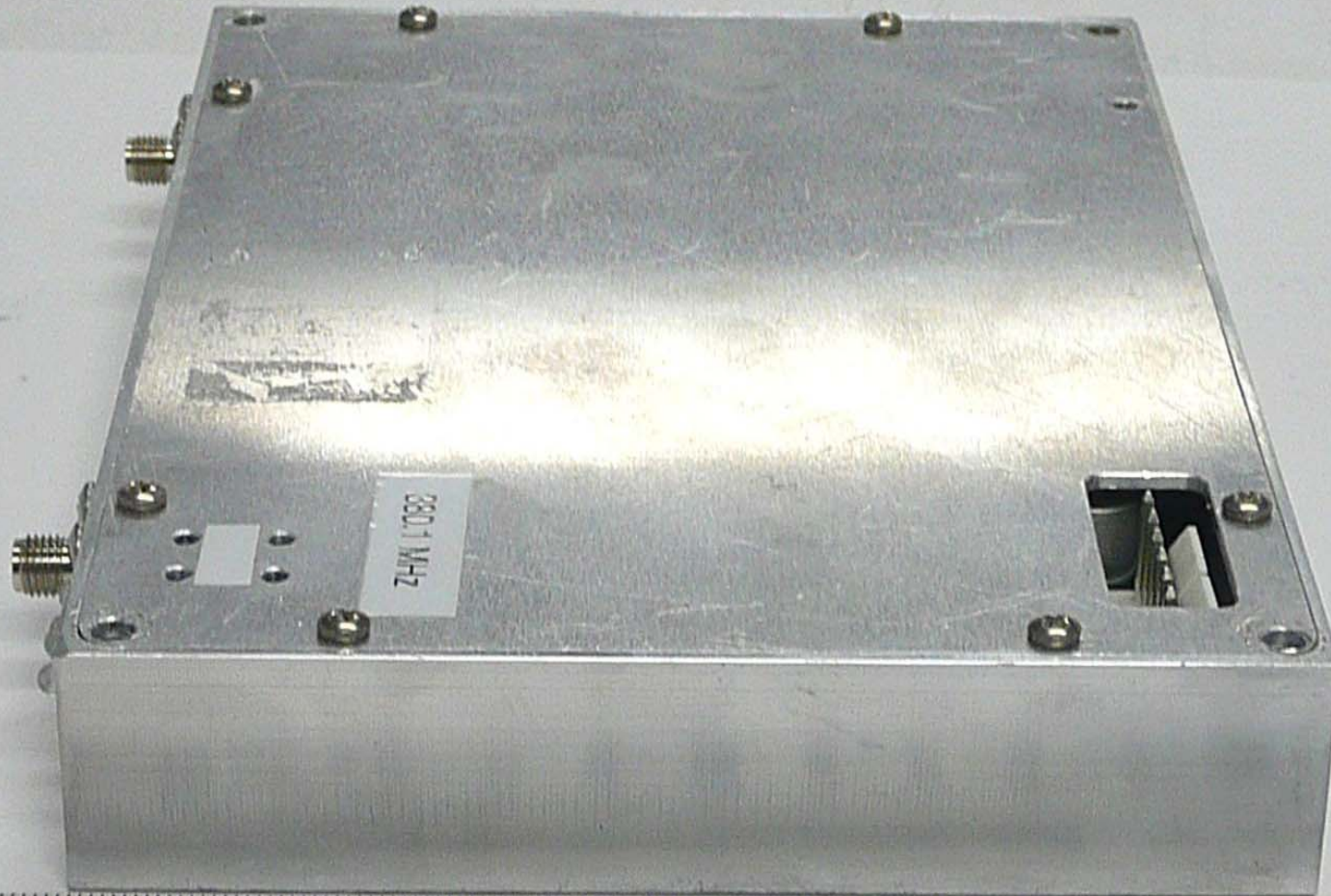


Uplink - PA



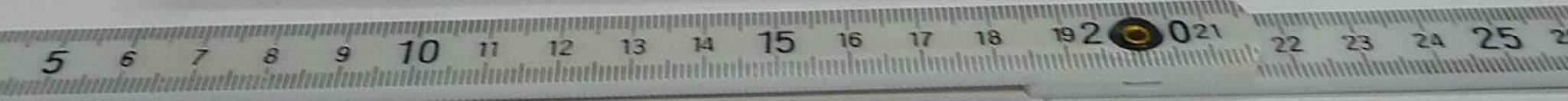


Uplink - PA



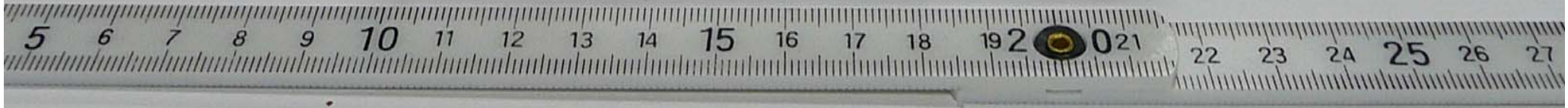


Uplink - PA



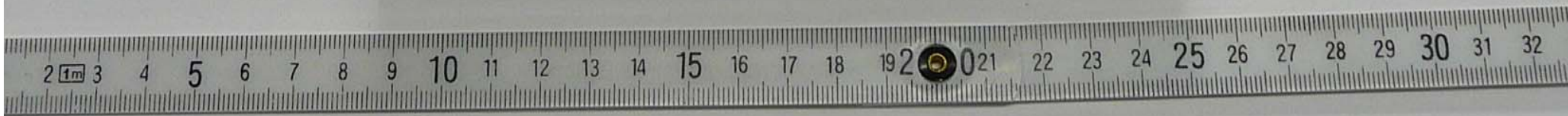
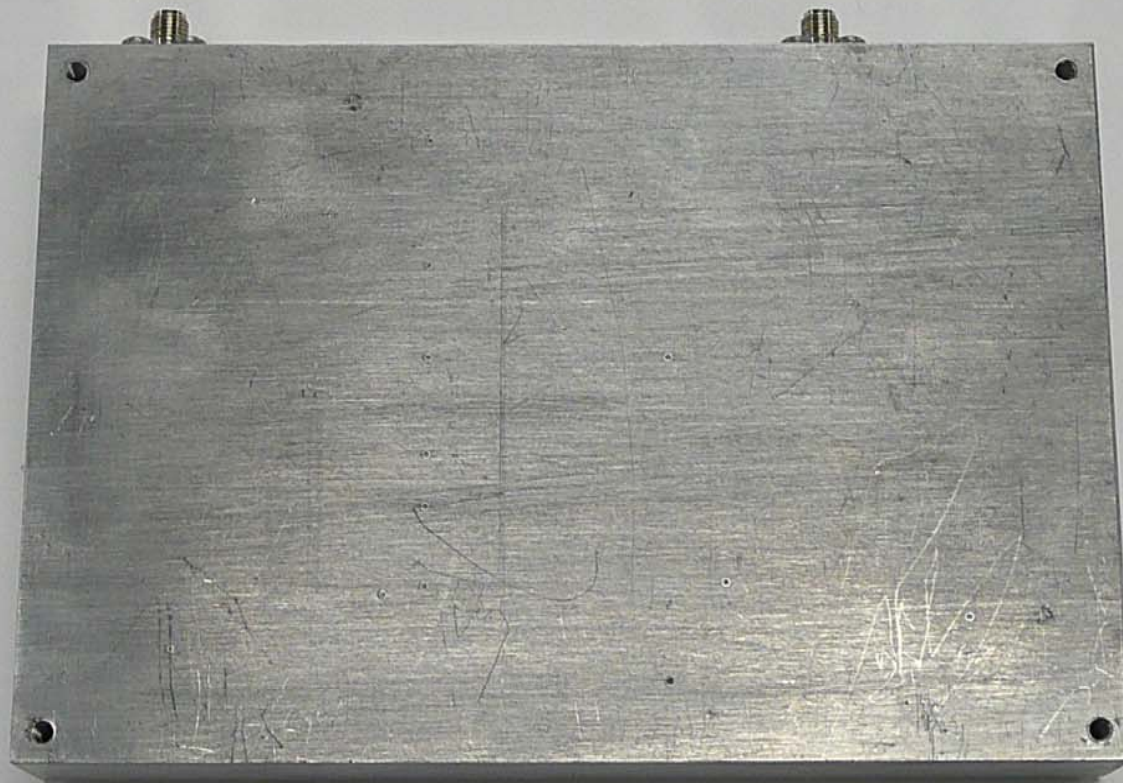


Uplink - PA



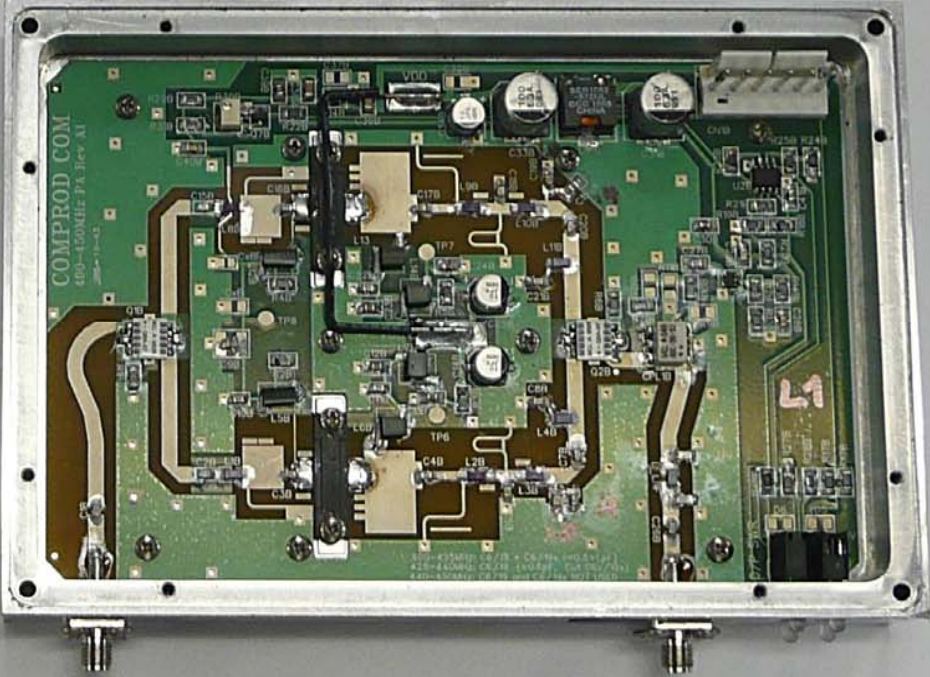


Uplink - PA



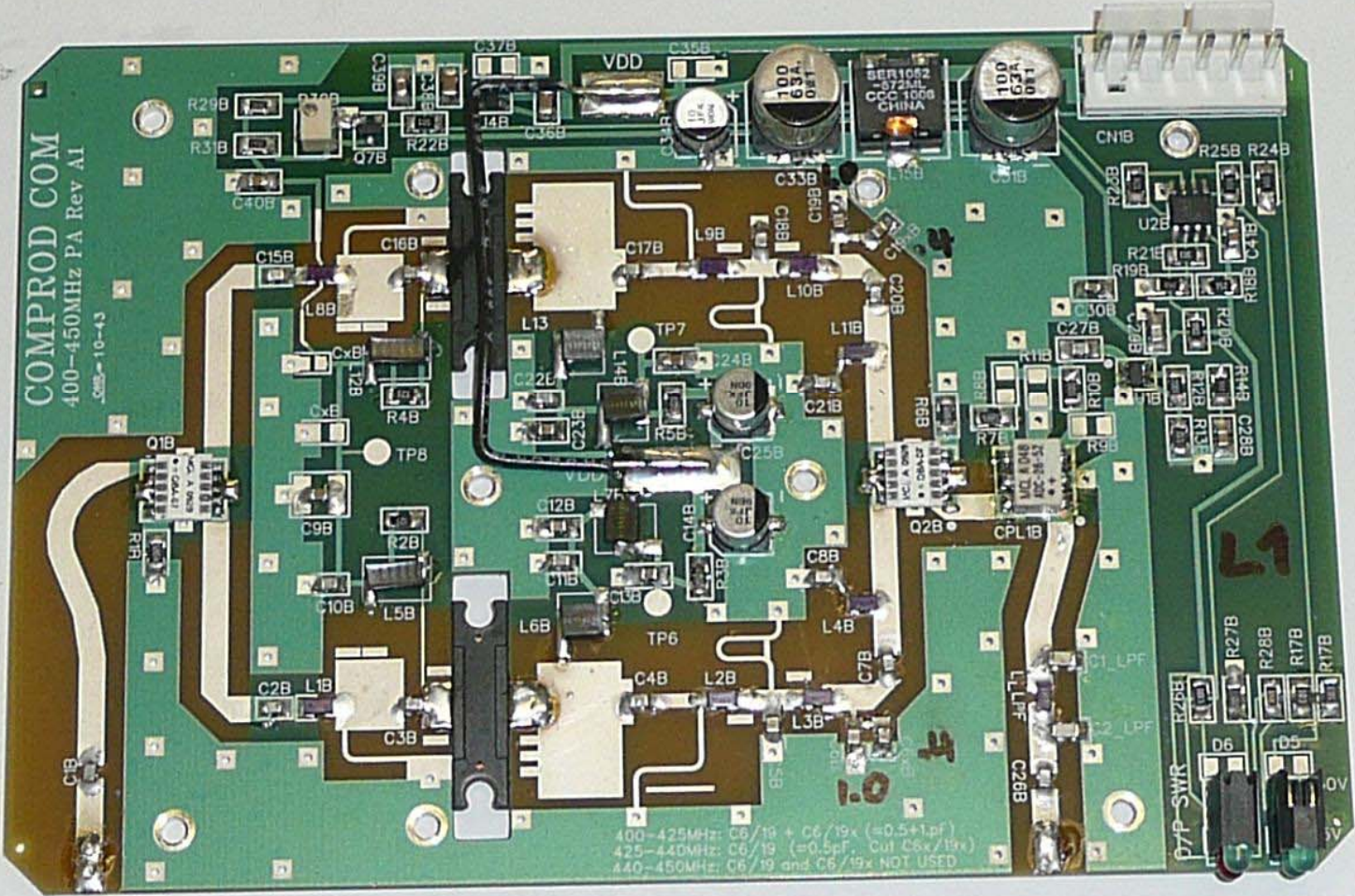


Uplink - PA





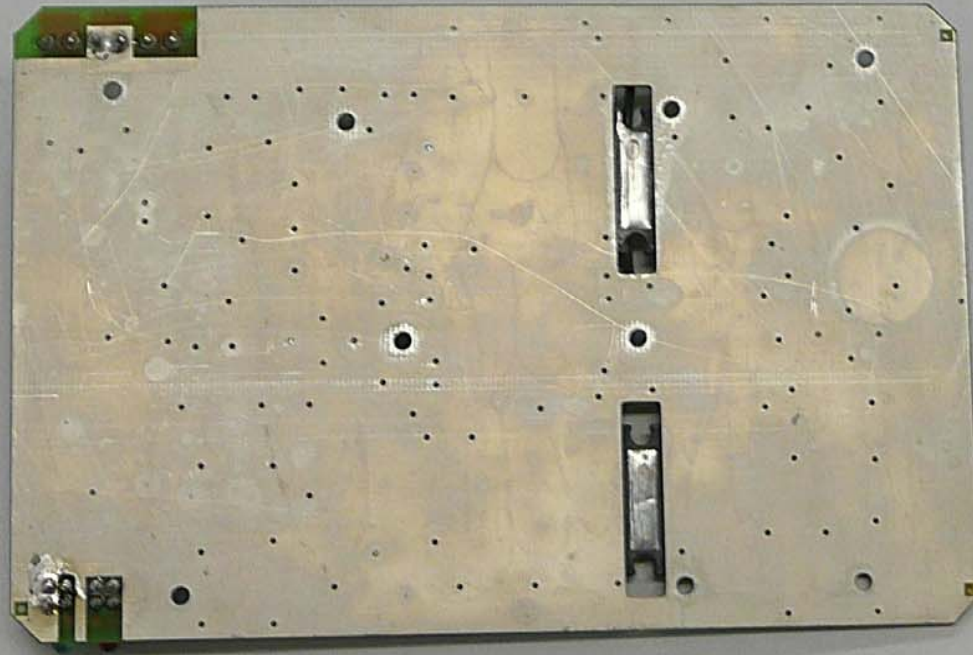
Uplink - PA



400-425MHz: C6/19 + C6/19x (=0.5+1pf)  
425-440MHz: C6/19 (=0.5pf, Cut C6x/19x)  
440-450MHz: C6/19 and C6/19x NOT USED

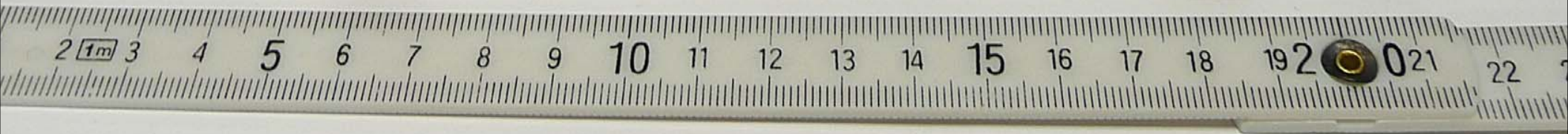


Uplink - PA





Downlink - VGA



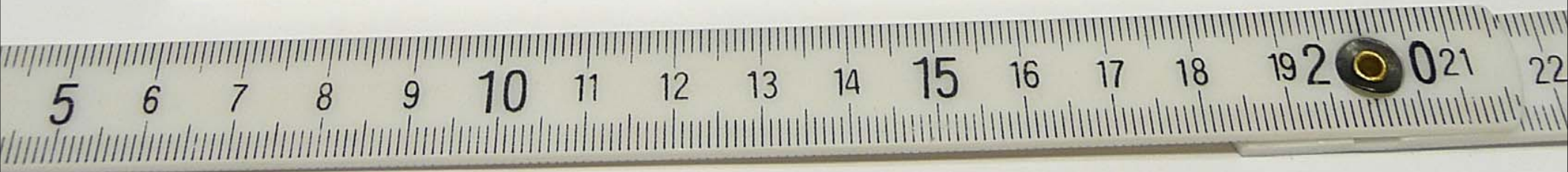


Downlink - VGA



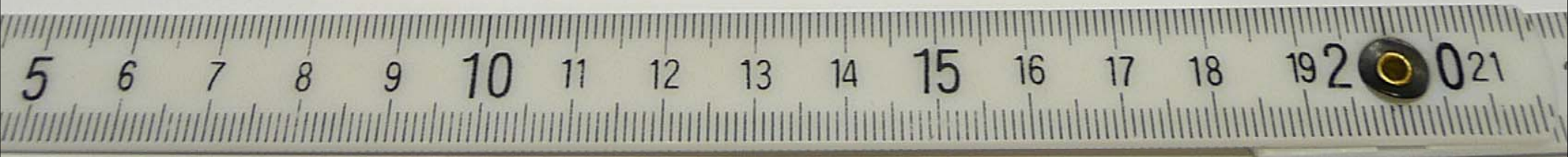


Downlink - VGA



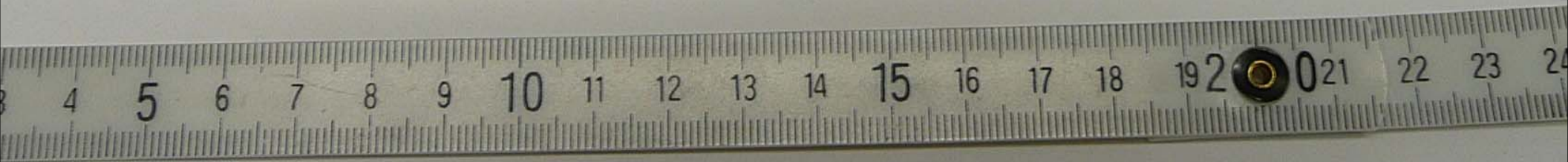


Downlink - VGA



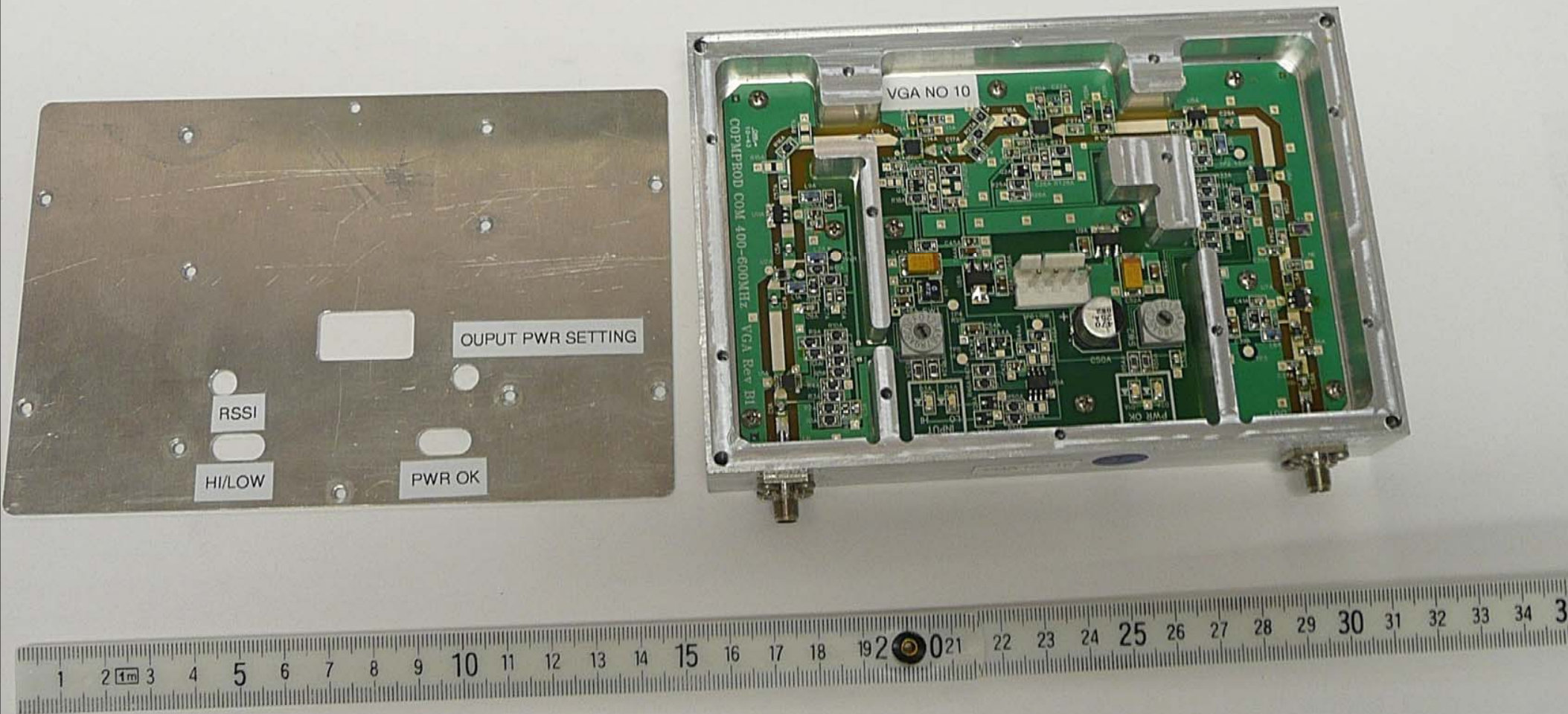


Downlink - VGA



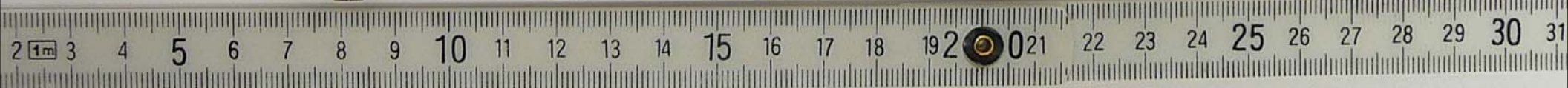


Downlink - VGA



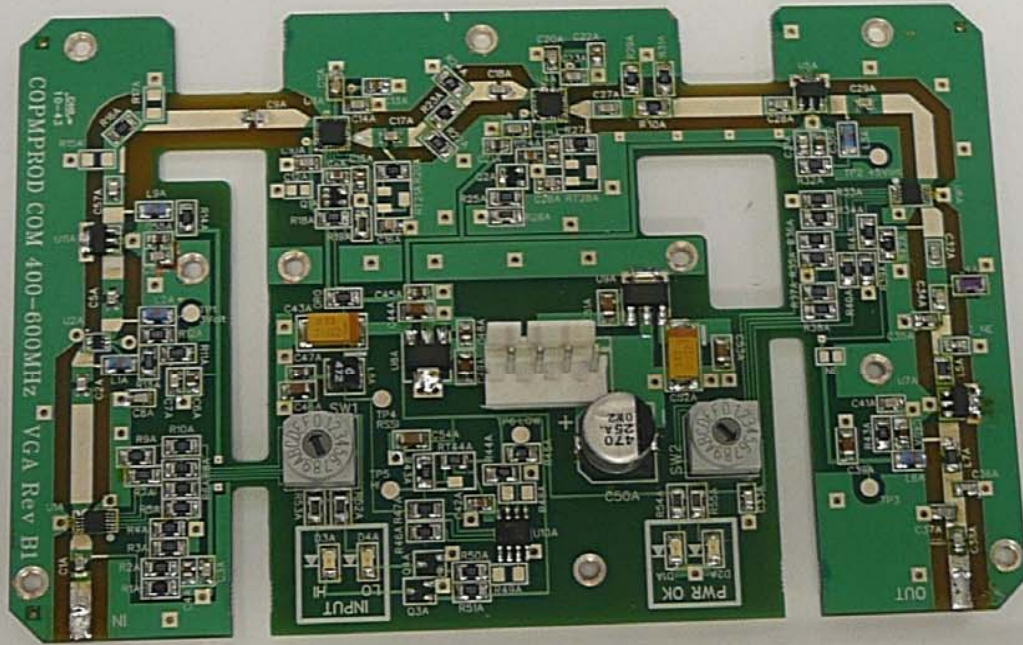


Downlink - VGA



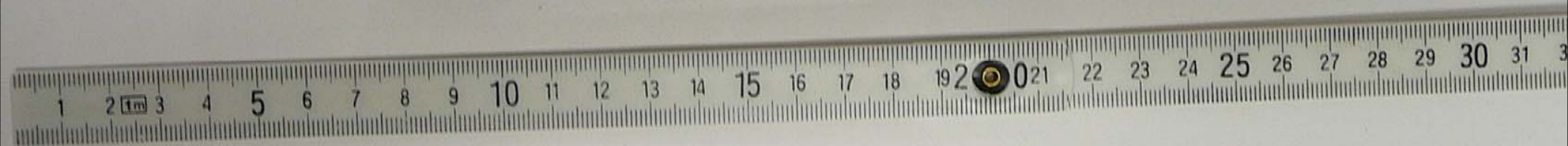
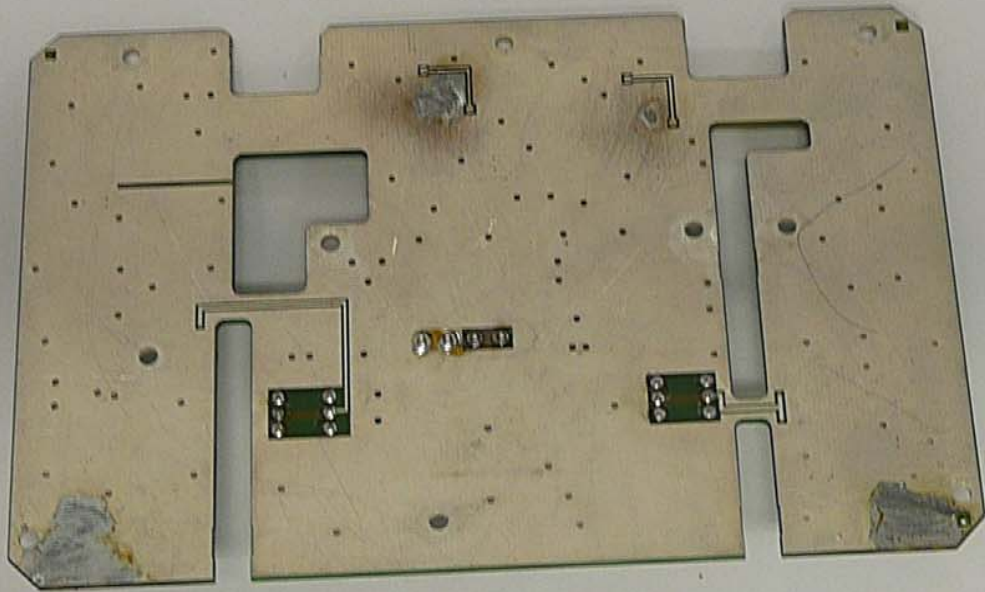


Downlink - VGA





Downlink - VGA





Downlink -PA



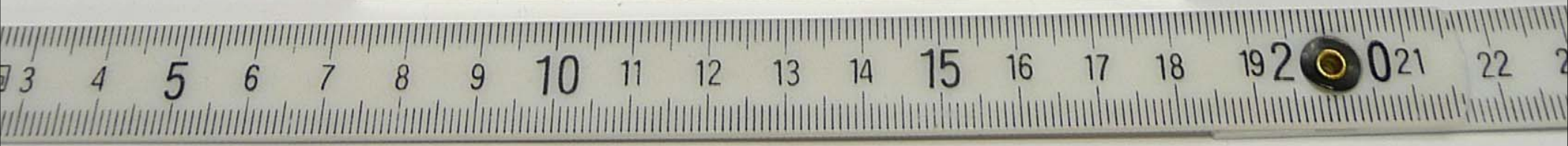


Downlink -PA



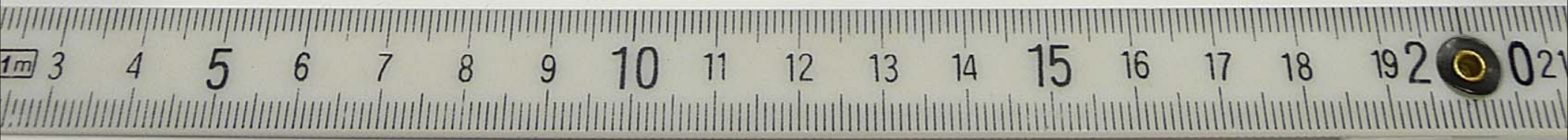
406.2 MHz

[Small white label with two black dots]

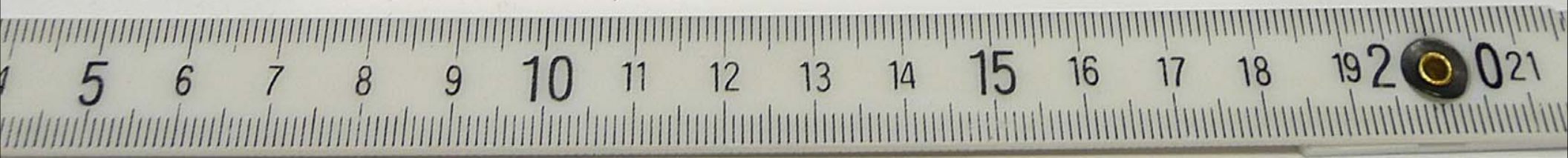




Downlink -PA



Downlink -PA

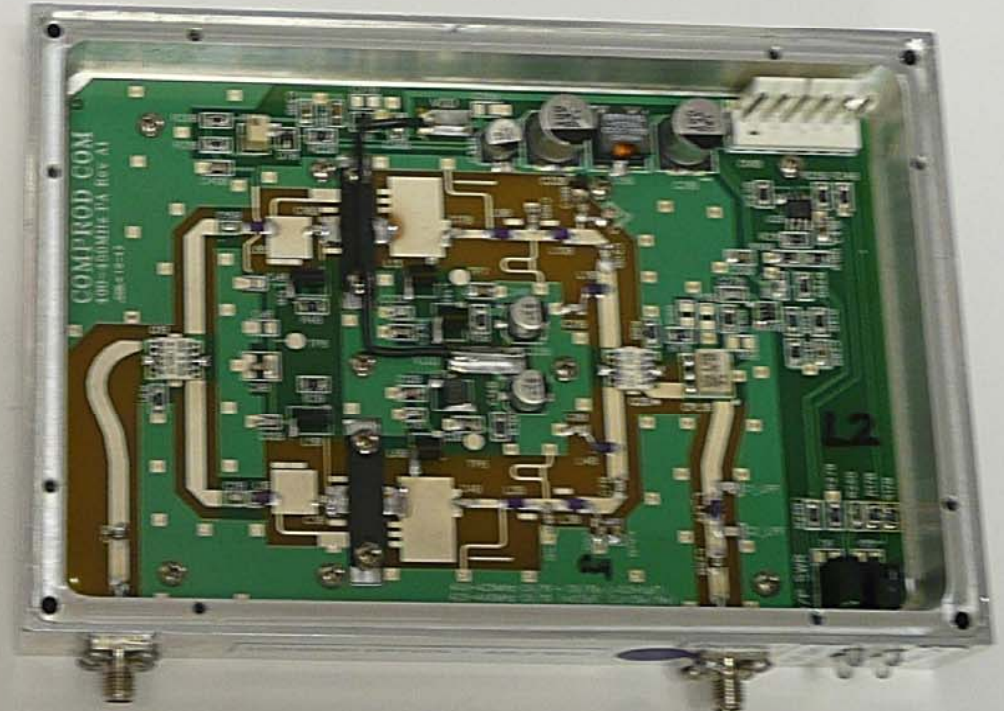
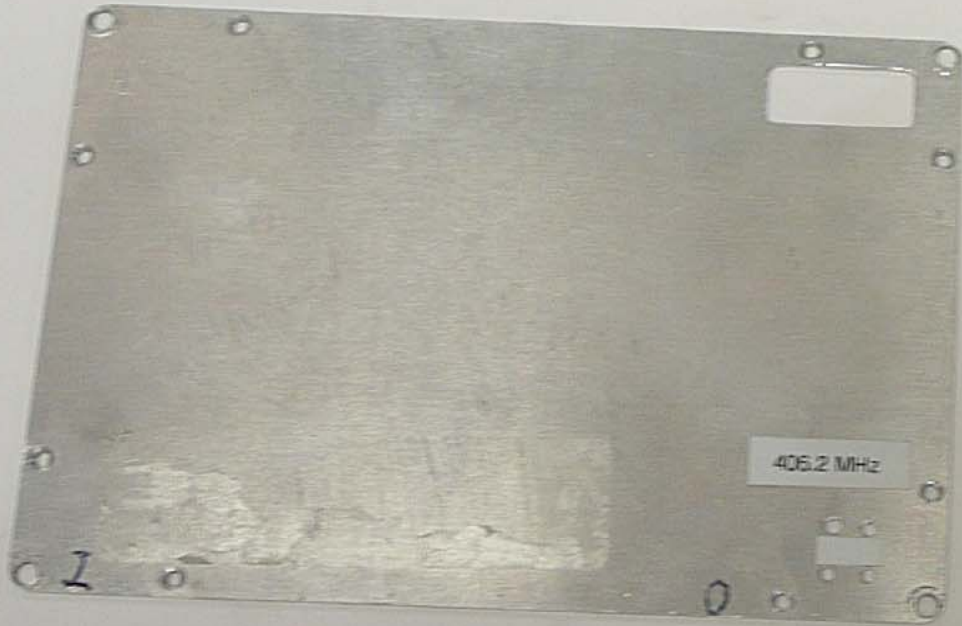




Downlink -PA

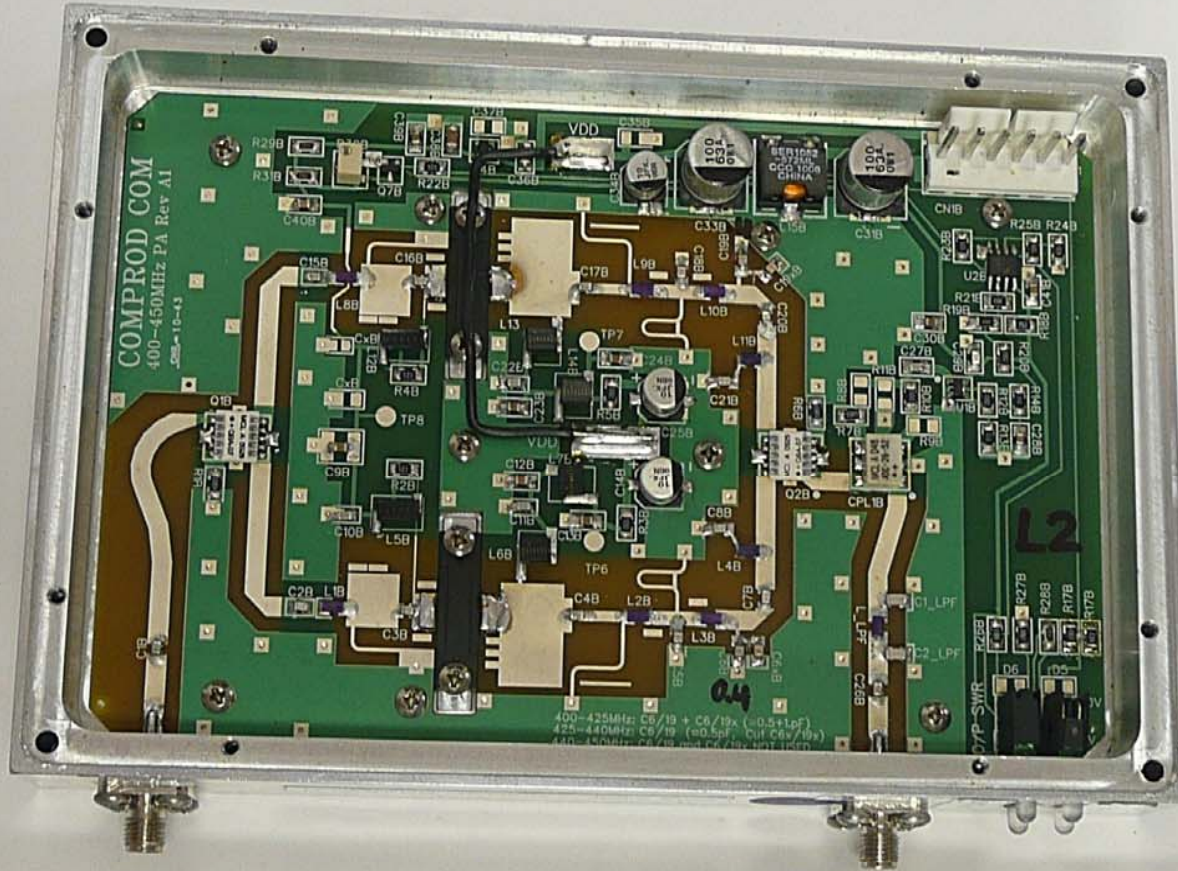


Downlink -PA



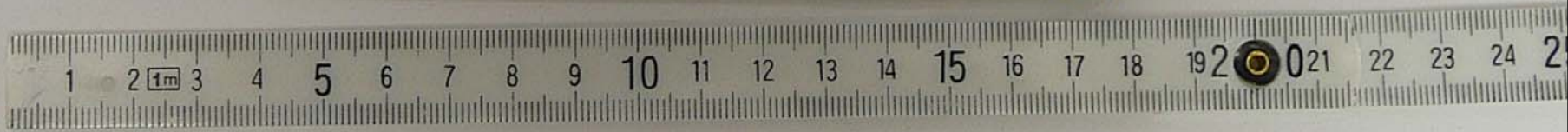
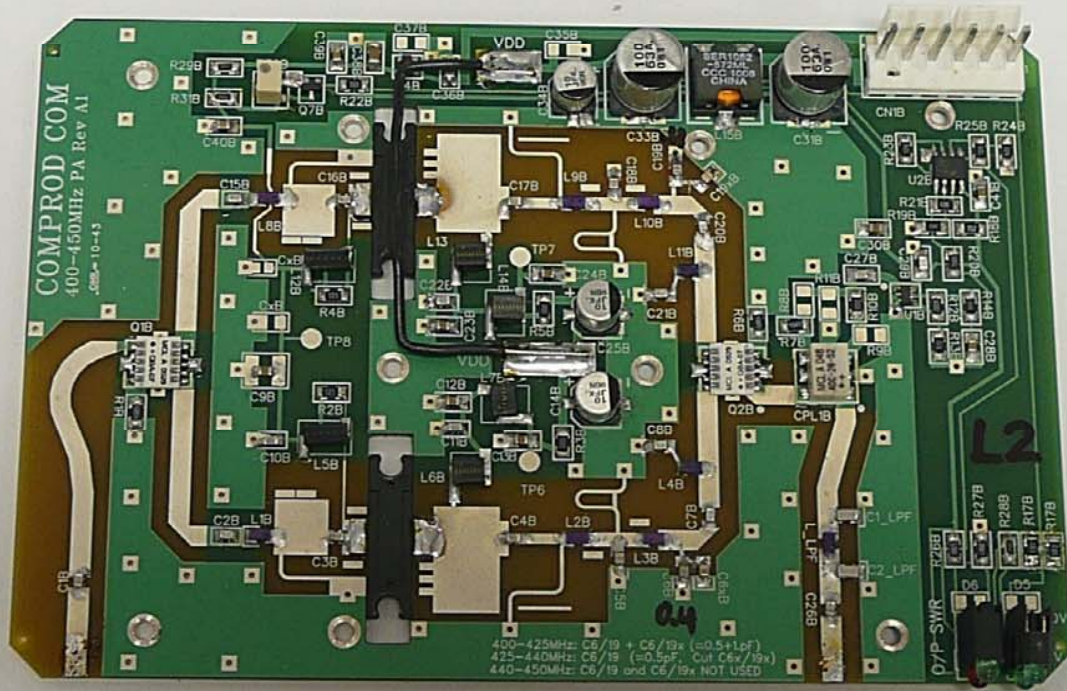


Downlink -PA





Downlink -PA





Downlink -PA

