

Section 1. Test Setup Photos

1.1 Test Setup

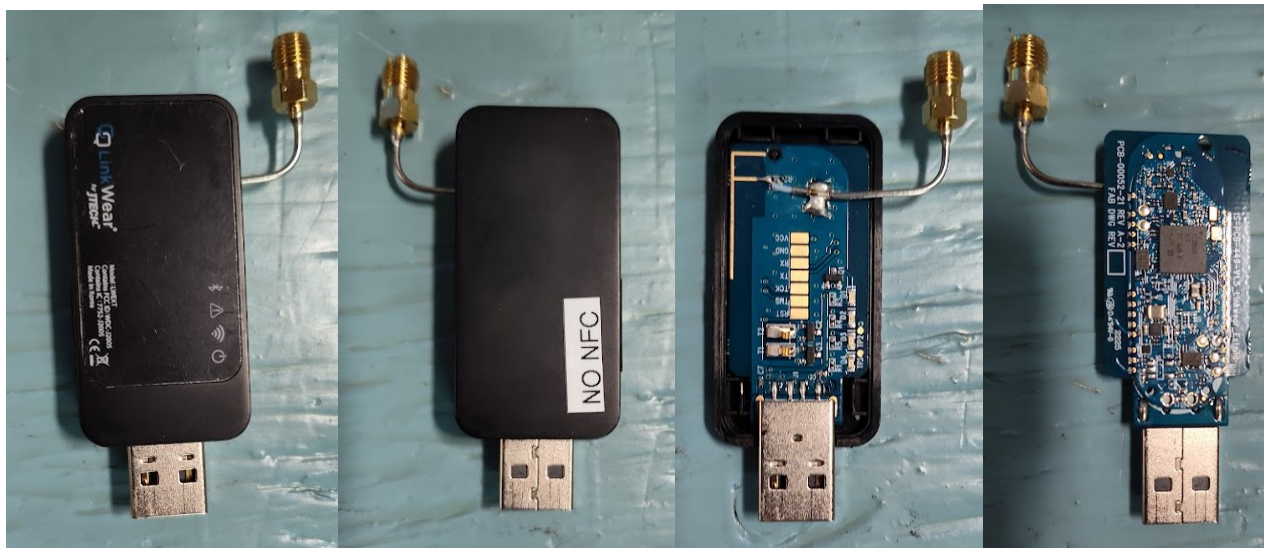


Figure 1 – Antenna Under Test

1.2 Antenna gain / 2D polar plot test setup

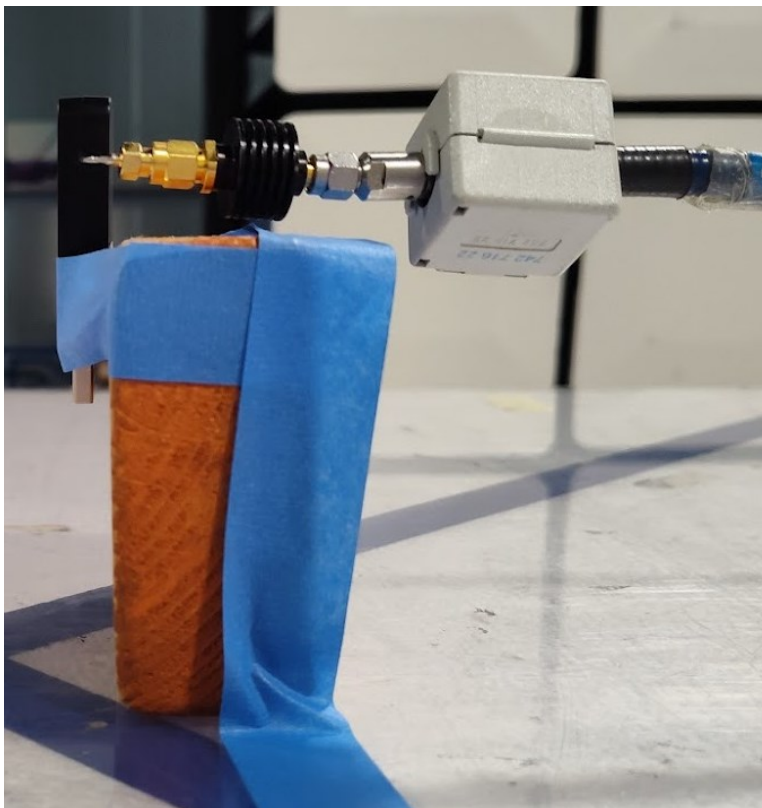


Figure 2 – Antenna Under Test mounting including 6 dB attenuator and ferrite

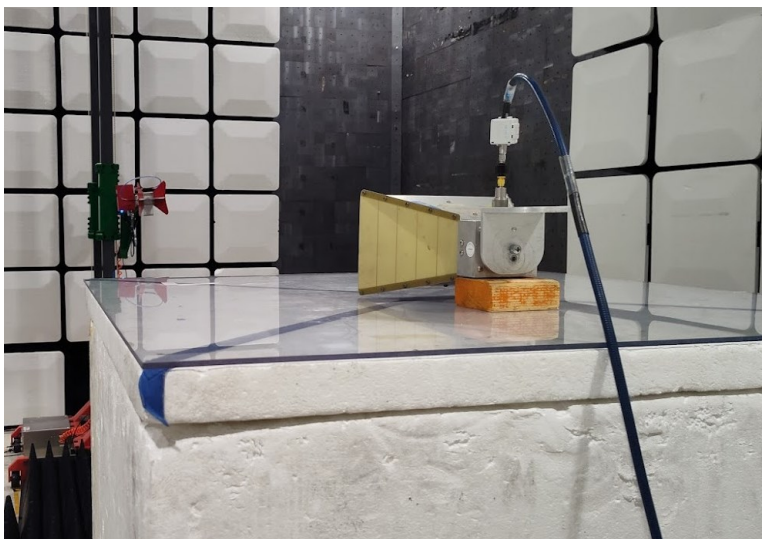


Figure 3 – Reference measurement with calibrated reference horn antenna (rear view)

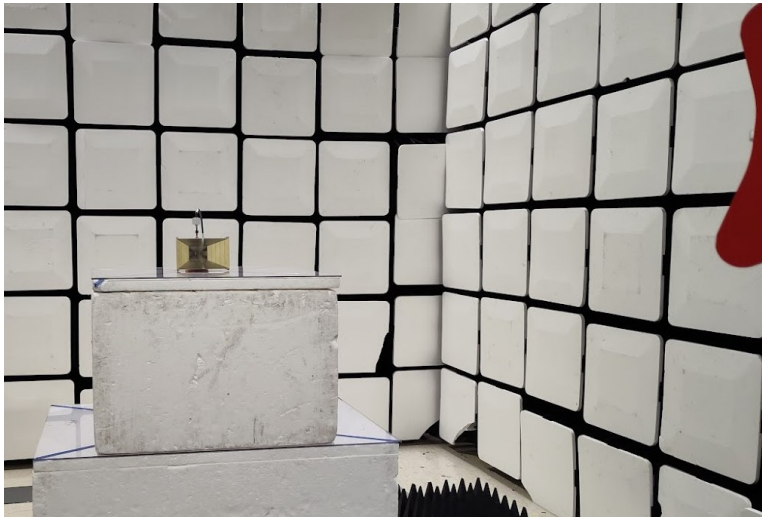


Figure 4 - Reference measurement with calibrated reference horn antenna (front view)

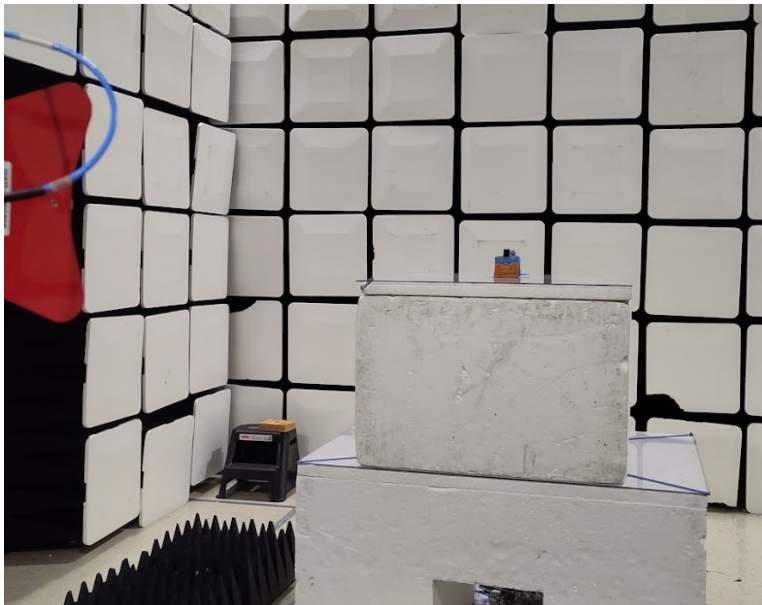


Figure 5 – Antenna Under Test setup

End of report