

Digital "Switch-Mode" Power Supply
Alimentation numérique avec « Mode Interrupteur » ("Switch-Mode")
Alimentatore digitale switching
Fuente de alimentación Digital, "Switch-Mode"
Digitale Stromversorgungseinheit mit Schalter

Turning the Dolphin ON to start it working

1. Plug the floating cable from the Dolphin into the power supply unit
2. Plug the electrical cable from the power supply unit into the mains

Mise sous tension du Dolphin

1. Reliez le câble flotteur du Dolphin au bloc d'alimentation
2. Reliez le câble électrique du bloc d'alimentation au secteur

Avviare Dolphin

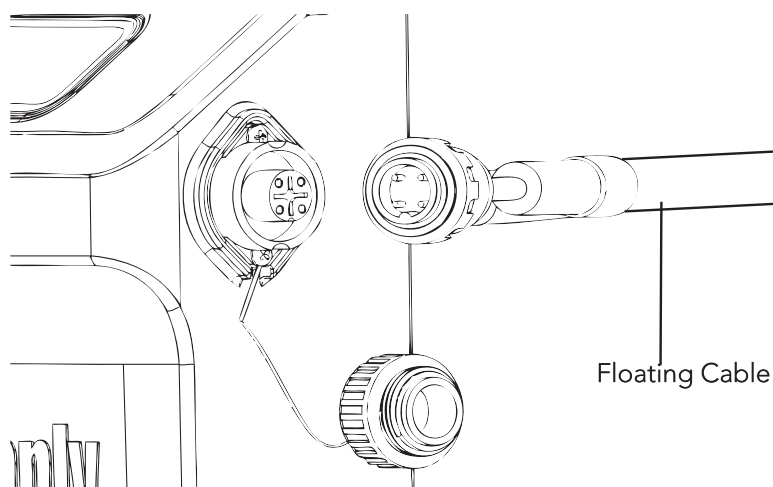
1. Collegare il cavo galleggiante di Dolphin all'alimentatore elettrico
2. Collegare il cavo elettrico dell'alimentatore elettrico alla presa di rete

Activar el Dolphin

1. Enchufe el cable flotador del Dolphin en la unidad de la fuente de alimentación
2. Enchufe el Cable Eléctrico de la Unidad de la fuente de alimentación en la red eléctrica

Anschalten des Dolphin-Roboters

1. Verbinden Sie das Schwimmkabel des Dolphin-Roboters mit der Stromversorgungseinheit
2. Verbinden Sie das Stromkabel der Stromversorgungseinheit mit dem Stromnetz



3. Press the ON/OFF switch on the power supply unit.

The Dolphin will now start to work

3. Appuyez sur l'interrupteur de marche/arrêt (ON/ OFF).

Le Dolphin va maintenant entamer son cycle de nettoyage

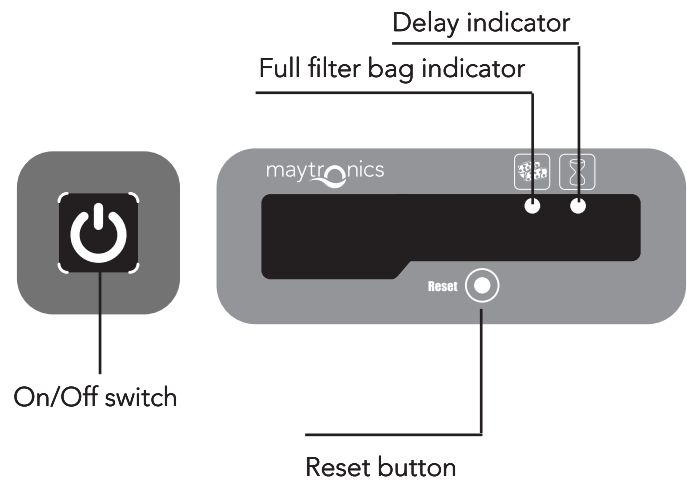
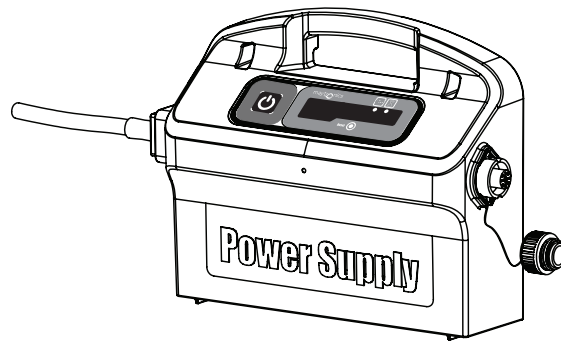
3. Premere l'interruttore ON/OFF.

Dolphin inizierà così a funzionare

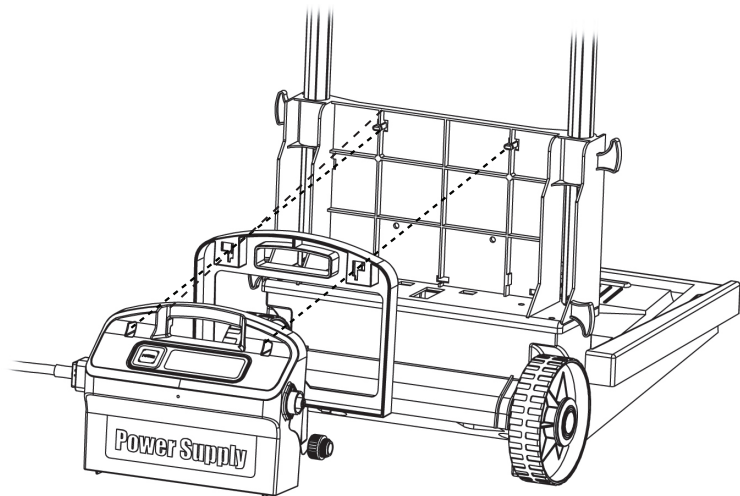
3. Presione el interruptor de Encendido/ Apagado.

El Dolphin empezará ahora a trabajar

3. Betätigen Sie den AN-/AUS-Schalter. Daraufhin beginnt der Dolphin-Roboter mit der Arbeit



- Input - 100-250 AC Volts
- 50-60 Hertz
- 180 Watt
- Output - 30 VDC
- IP 54



FCC statement

NOTE: This equipment has been tested and found to comply with the limits for a Class B digital device, pursuant to part 15 of the FCC Rules. These limits are designed to provide reasonable protection against harmful interference in a residential installation. This equipment generates, uses and can radiate radio frequency energy and, if not installed and used in accordance with the instructions, may cause harmful interference to radio communications. However, there is no guarantee that interference will not occur in a particular installation. If this equipment does cause harmful interference to radio or television reception, which can be determined by turning the equipment off and on, the user is encouraged to try to correct the interference by one or more of the following measures:

- Reorient or relocate the receiving antenna.
- Increase the separation between the equipment and receiver.
- Connect the equipment into an outlet on a circuit different from that to which the receiver is connected.
- Consult the dealer or an experienced radio/TV technician for help.

Changes or modifications to this equipment not expressly approved by the party responsible for compliance (Maytronics Ltd.) could void the user's authority to operate the equipment.