

# HMDX

## ONE YEAR LIMITED WARRANTY

HMDX sells its products with the intent that they are free of defects in manufacture and workmanship for a period of one year from the date of original purchase, except as noted below. HMDX warrants that its products will be free of defects in material and workmanship under normal use and service. This warranty extends only to consumers and does not extend to Retailers.

To obtain warranty service on your HMDX product, contact a Consumer Relations Representative by telephone at 1-800-753-3000 or email [cservice@hmdxaudio.com](mailto:cservice@hmdxaudio.com) for assistance. Please make sure to have the model number of the product available. Representatives are available 8:30am-7:00pm EST Monday-Friday.

No COD's will be accepted.

HMDX does not authorize anyone, including, but not limited to, Retailers, the subsequent consumer purchaser of the product from a Retailer or remote purchasers, to obligate HMDX in any way beyond the terms set forth herein. This warranty does not cover damage caused by misuse or abuse; accident; the attachment of any unauthorized accessory; alteration to the product; improper installation; unauthorized repairs or modifications; improper use of electrical/power supply; loss of power; dropped product; malfunction or damage of an operating part from failure to provide manufacturer's recommended maintenance; transportation damage; theft; neglect; vandalism; or environmental conditions; loss of use during the period the product is at a repair facility or otherwise awaiting parts or repair; or any other conditions whatsoever that are beyond the control of HMDX.

This warranty is effective only if the product is purchased and operated in the country in which the product is purchased. A product that requires modifications or adoption to enable it to operate in any other country than the country for which it was designed, manufactured, approved and/or authorized, or repair of products damaged by these modifications is not covered under this warranty.

THE WARRANTY PROVIDED HEREIN SHALL BE THE SOLE AND EXCLUSIVE WARRANTY. THERE SHALL BE NO OTHER WARRANTIES EXPRESS OR IMPLIED INCLUDING ANY IMPLIED WARRANTY OF MERCHANTABILITY OR FITNESS OR ANY OTHER OBLIGATION ON THE PART OF THE COMPANY WITH RESPECT TO PRODUCTS COVERED BY THIS WARRANTY. HMDX SHALL HAVE NO LIABILITY FOR ANY INCIDENTAL, CONSEQUENTIAL OR SPECIAL DAMAGES. IN NO EVENT SHALL THIS WARRANTY REQUIRE MORE THAN THE REPAIR OR REPLACEMENT OF ANY PART OR PARTS WHICH ARE FOUND TO BE DEFECTIVE WITHIN THE EFFECTIVE PERIOD OF THE WARRANTY.

NO REFUNDS WILL BE GIVEN. IF REPLACEMENT PARTS FOR DEFECTIVE MATERIALS ARE NOT AVAILABLE, HMDX RESERVES THE RIGHT TO MAKE PRODUCT SUBSTITUTIONS IN LIEU OF REPAIR OR REPLACEMENT.

This warranty does not extend to the purchase of opened, used, repaired, repackaged and/or resealed products, including but not limited to sale of such products on Internet auction sites and/or sales of such products by surplus or bulk resellers. Any and all warranties or guarantees shall immediately cease and terminate as to any products or parts thereof which are repaired, replaced, altered, or modified, without the prior express and written consent of HMDX.

This warranty provides you with specific legal rights. You may have additional rights which may vary from state to state. Because of individual regulations, some of the above limitations and exclusions may not apply to you. For more information regarding our product line in the USA, please visit: [www.hmdxaudio.com](http://www.hmdxaudio.com)

HMDX is a trademark of HMDX.

©2013 HMDX. All Rights Reserved.

IB-HXB340

Por manual de instrucciones e Información de garantía en español visitenos en [www.hmdxaudio.com](http://www.hmdxaudio.com)

HMDX  
Service Center  
1.800.753.3000  
8:30 am - 7:00 pm (EST)  
M - F  
e-mail: [cservice@hmdxaudio.com](mailto:cservice@hmdxaudio.com)



# HMDX™

## CHILL™ BLUETOOTH® DUAL ALARM CLOCK



# 1 year LIMITED WARRANTY

### Instruction Manual and Warranty Information

Por manual de instrucciones e Información de garantía en español visitenos en [www.hmdxaudio.com](http://www.hmdxaudio.com)



HX-B340

## CONGRATULATIONS ON YOUR PURCHASE.

Thank you for purchasing the HMDX CHILL Bluetooth® Alarm Clock. It will wake you up as you command but the CHILL is so awesome you may never want to rest.

Please take a few moments to read through this manual for a quick and easy explanation of features and operation of your new CHILL.

## CHILL BLUETOOTH® ALARM CLOCK MAIN FEATURES

- Connects wirelessly using proven Bluetooth® technology with smartphones, tablets, notebooks and MP3 players
- Full function dual alarm with snooze and gradual wake
- Digital FM radio
- Superior sound quality
- USB charging port
- Enhanced LCD display
- Battery backup



## IMPORTANT SAFEGUARDS:

When using an electrical product, basic precautions should always be followed, including the following:

### READ ALL INSTRUCTIONS BEFORE USING

- Close supervision is necessary when this product is used by, on or near children, invalids or disabled persons.
- **WARNING:** Do not place speakers too close to ears. May cause damage to ear drums, especially in young children.
- Use this product only for its intended use as described in this manual. Do not use attachments not recommended by HMDX.
- Do not place or store this product where it can fall or be dropped into a tub or sink.
- Do not place or drop into water or any other liquid.
- Not for use by children. THIS IS NOT A TOY.
- Turn off product when not in use.
- Never operate this product if it has a damaged cord, plug, cable or housing.
- Keep away from heated surfaces.
- Only set on dry surfaces. Do not place on surface wet from water or cleaning solvents.

## SAVE THESE INSTRUCTIONS

**Caution:** Please read all instructions carefully before operating.

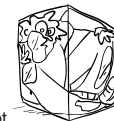
- Never leave the product unattended, especially if children are present.
- Never cover the product when it is in operation.
- This unit should not be used by children without adult supervision.
- Always keep the product away from high temperature and fire.

## BATTERY PRECAUTIONS

- Use only the size and type of batteries specified.
- When installing batteries, observe proper +/- polarities. Incorrect installation of battery may cause damage to the unit.
- If the unit is not going to be used for a long period of time, remove batteries to prevent damage due to possible battery leakage.
- Do not dispose of batteries in fire. Batteries may explode or leak.

This product contains small parts that may present a choking hazard for young children.

**CAUTION:** All servicing of this product must be performed by authorized HMDX Service Personnel only



## GETTING STARTED

Unpack the unit carefully. Remove all the accessories from the display carton. Do not remove any labels or stickers on the bottom of the unit or adapter. Before setting up the unit, verify that the following accessories are present:

- CHILL Bluetooth® Alarm Clock x 1
- AC power adapter x 1

## POWER SOURCE (FIG. 1)

This unit is supplied with an AC adaptor; take the following steps to connect the adaptor.

1. Unwind the power cord of the AC adaptor to its full length.
2. Connect the AC adapter to the DC Jack (Fig. 1).
3. Plug the AC adapter into an outlet (100 – 240VAC 50/60 Hz). Connecting this system to any other power source may cause damage to the system. For sufficient ventilation, keep other objects at least 4 inches away from the unit.
4. To switch the unit off completely, unplug the AC adapter from the wall outlet.



## REPLACING BACKUP BATTERY IF NEEDED

This alarm clock is equipped with a battery backup feature (batteries included and already installed) to keep the clock time during power outage.

1. Open battery compartment door located on the bottom of the unit.
2. Please make sure the AC adapter is connected. Otherwise all settings may be lost during battery replacement.
3. Insert proper replacement battery (CR-2025), checking that the polarity (“+” and “-” ends of the battery) matches the drawing near the battery compartment. Close the compartment door.



## SETTING CLOCK TIME

### MANUALLY SETTING THE CLOCK (FIGS. 1 & 2)

1. Make sure the CHILL is plugged in, but powered off.
2. Press and hold the TIME SET button located on the back of the unit to enter Time Setting mode. The hour will begin flashing. Use the TUNER ◀◀ ▶▶ buttons to adjust the hour, paying attention to the AM and PM indicators.
3. Once the hour has been set press the TIME SET button again and the minute will begin flashing. Use the TUNER ◀◀ ▶▶ buttons to adjust the minute.
4. Press the TIME SET button again to set the year, month, day of the week and 12/24 mode repeating the steps above.



## SETTING AND USING THE ALARMS

### SETTING ALARM 1 OR ALARM 2 (FIGS. 1 & 2)

1. Make sure the unit is plugged in, but powered off.
2. Press and hold the desired alarm button (ALARM 1 or ALARM 2) located on the top of the CHILL. The hour will begin flashing.
3. Use the TUNER ◀◀ ▶▶ buttons on top of the CHILL to adjust the hour, paying attention to the AM and PM indicators.
4. Press the alarm button again and the minute will begin flashing. Use the TUNER ◀◀ ▶▶ buttons again to adjust the minute.
5. Press alarm button again to adjust the maximum volume of the gradual wake feature (alarm begins soft and slowly gets louder) by using the TUNER ◀◀ ▶▶ buttons to adjust the sound level up or down.
6. Press the alarm button again and use the TUNER ◀◀ ▶▶ buttons to select EVERYDAY (7), WEEKDAYS (5), WEEKENDS (2) or ONE DAY (1) settings.
7. Press the alarm button again to select the source. The CHILL's alarm can be set to Beep or to FM radio using the TUNER ◀◀ ▶▶ buttons. The alarm cannot be set to the Bluetooth® source.
8. Press the alarm button again to exit Alarm Setting mode.

## TURNING OFF THE ALARM / SNOOZE OPERATION (FIG. 2)

The CHILL Bluetooth® Alarm Clock is equipped with gradual wake, which means that the alarm begins soft and slowly gets louder. This will ensure a non-jarring wakeup.

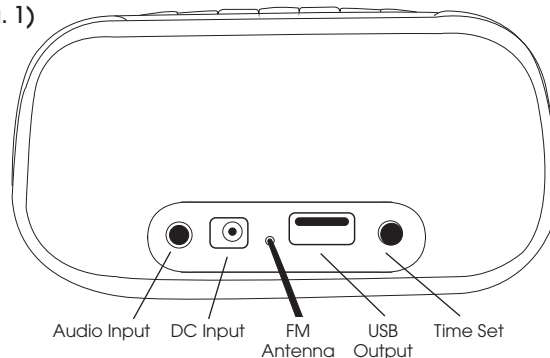
- To turn off the alarm once the alarm begins to sound, press any button on the top of the unit (except Snooze).
- To begin the snooze function, once the alarm begins to sound press the SNOOZE bar located on the top of the CHILL and the alarm will be silenced (the  or  icon will begin to flash).

Please note: You may only press the SNOOZE button during the Alarm mode for one hour (7 times). After the seventh time, the alarm will turn off and will not sound again until the next set time.

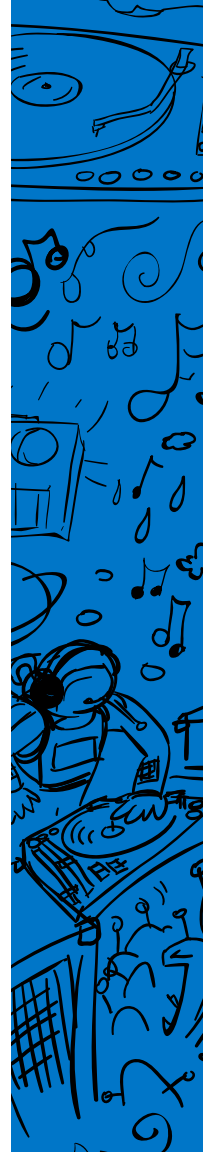
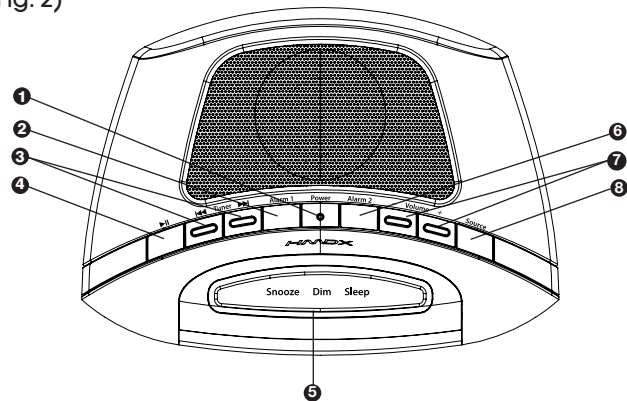


## CHILL BLUETOOTH® ALARM CLOCK CONTROLS AND CONNECTIONS

(Fig. 1)



(Fig. 2)



## ONE DAY ALARM (HOTEL SETTING)

This alarm clock is equipped with a 1-Day Alarm feature, which allows the alarm to be set for one day only. To activate this feature:

1. Move the HOTEL switch located on the bottom of the CHILL to the ON position. Once this switch is in the ON position, the alarm time will need to be reset.
2. Press and hold the desired alarm button (ALARM 1 or ALARM 2) located on the top of the CHILL. The hour will begin flashing.
3. Use the TUNER ◀◀ ▶▶ buttons on top of the CHILL to adjust the hour, paying attention to the AM and PM indicators.
4. Press the alarm button again and the minute will begin flashing. Use the TUNER ◀◀ ▶▶ buttons again to adjust the minute.
5. Press alarm button again to adjust the maximum volume of the gradual wake feature (alarm begins soft and slowly gets louder) by using the TUNER ◀◀ ▶▶ buttons to adjust the sound level up or down.
6. Press the alarm button again to select the source. The CHILL's alarm can be set to Beep or to FM radio using the TUNER ◀◀ ▶▶ buttons. The alarm cannot be set to the Bluetooth® source.

Please note: When the 1-Day alarm feature is activated, the alarm will only sound for the 1 day selected.



## LISTENING TO A NON-BLUETOOTH® AUDIO DEVICE

1. Using the 3.5 mm audio cable (not included), plug in the device via the AUX audio line input located on the rear of the CHILL.
2. Plug the other end of the audio cable into the line out or headphone jack of your audio device.
3. Press the POWER button located on top of the CHILL.
4. Press the SOURCE button on the unit until the AUX icon appears on the display.
5. Press play on the connected device.

NOTE: You may need to adjust the volume on your audio device to achieve proper volume.



## LISTENING TO THE FM RADIO (FIG. 1 & 2)

**NOTE:** For best reception, fully extend the wire antenna. DO NOT strip, alter or attach to other antennas.

1. To listen to the radio, press the POWER button located on top of the CHILL.
2. Press the SOURCE button on the CHILL until FM and station frequency appears on the display.
3. Use the TUNER ◀◀ ▶▶ buttons on the top of the unit to select desired station.
4. Press the POWER button to turn unit off.



## LISTENING TO YOUR DEVICE WIRELESSLY OVER BLUETOOTH®

To listen to your music using the Bluetooth® wireless connection, you need to pair your device with the CHILL:

1. Make sure your device has Bluetooth® capability.
2. Use the SOURCE button on the CHILL to select BLUETOOTH. BT icon will appear on display
3. Follow the instructions of your device to pair the unit.
4. Pair your device with the unit by selecting HMDX CHILL from your Bluetooth® listings on your device or selecting YES.
5. Press play on your device and use controls on the CHILL to adjust desired volume.

**NOTE:** Once you have successfully paired your device, you typically will not need to repeat the above steps. Please ensure the AUX cable is unplugged, the unit source is set to Bluetooth® and your device has Bluetooth® enabled. The effective range for this mode is approximately 30 feet.



## DISPLAY DIMMER CONTROL (FIG. 2)

Press the SNOOZE / DIM / SLEEP bar to adjust the backlight intensity of clock display. The power needs to be off to use the dimmer control.

## USB CHARGING PORT

- This USB port is for charging only. It cannot be used to play music through the unit.
- In order to use the USB charging feature, you must have the proper cord to connect to your device with a USB Type A connector on the other end.

To charge your device using the USB charging port (located on the back of the unit):

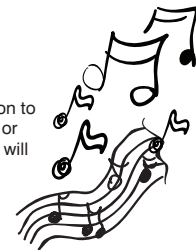
1. Connect the USB Type A end of the device's cable into the USB port on the rear of the CHILL.
2. Connect the other end of the USB cable to your device to begin charging.

## VOLUME CONTROL (FIG. 2)

To adjust the volume, use the volume +/- buttons to select the desired level.

## SLEEP FEATURE

While listening to the Bluetooth®, radio or AUX sources, press the SNOOZE button to activate the sleep feature. This allows you to set a sleep timer for 90, 80, 70...10, or 5 minutes. Once set, the unit will continue playing for the set length of time, then will automatically turn off.



## MAINTENANCE

### TO STORE

You may leave the unit on display, or you can store it in its box in a cool, dry place.

### TO CLEAN

Use only a soft dry cloth to clean the enclosure of the unit.

**NEVER** use liquids or abrasive cleaner to clean.

Modifications not authorized by the manufacturer may void users authority to operate this device.

## FCC DISCLAIMER

**NOTE:** This device complies with part 15 of the FCC Rules. Operation is subject to the following two conditions: (1) This device may not cause harmful interference, and (2) this device must accept any interference received, including interference that may cause undesired operation.

**NOTE:** This equipment has been tested and found to comply with the limits for a Class B digital device, pursuant to part 15 of the FCC Rules. These limits are designed to provide reasonable protection against harmful interference in a residential installation. This equipment generates, uses and can radiate radio frequency energy and, if not installed and used in accordance with the instructions, may cause harmful interference to radio communications. However, there is no guarantee that interference will not occur in a particular installation. If this equipment does cause harmful interference to radio or television reception, which can be determined by turning the equipment off and on, the user is encouraged to try to correct the interference by one or more of the following measures:

- Reorient or relocate the receiving antenna.
- Increase the separation between the equipment and receiver.
- Connect the equipment into an outlet on a circuit different from that to which the receiver is connected.
- Consult the dealer or an experienced radio/TV technician for help.

Changes or modifications not expressly approved by HDMX could void the user's authority to operate the equipment.

