

Dear Valued Customer,
 In order to protect your consumer rights, please ensure that at the time of purchase you fill out the provided warranty certificate, coupled with the retailer stamp so as to ensure valid warranty.
 親愛的顧客您好：為了保障您的權益，請您在購買時，立即請經銷商填好購買日期並蓋店章，也請妥善保存保固書，才能享有本公司之完整售後服務。

LUXA2
 A Division of Thermaltake

Product Name* (品名)				
Serial number* (序號)				
Date of purchase* (購買日期)	(AD) 西元	(Year) 年	(Month) 月	(Date) 日
Store of purchase (Official stamp required) 經銷店章* (請務必蓋章保固方為有效)				
<ul style="list-style-type: none"> Warranty period begins on the date of purchase of brand new, unused products by first-end user. Please retain receipt and warranty certificate as proof of purchase. If within warranty period, the product is determined defective, please return to the original store of purchase for a replacement. For additional services, please email info@luxa2.com or contact one of our global offices, of which details can be found on the previous page. *本廠原廠為全球上市購買日期，保固期將以此產品到全球各製的出貨日期開始計算。 *故障流程：聯絡原廠或店家-送換不良品-送原維修-送修回廠寄 *如需其他服務，請電子郵件至 info@luxa2.com 或與最近經銷商聯繫 LUXA2 全球分公司 服務專員，詳情請洽 LUXA2 官網 http://www.luxa2.com.tw/ 				

Groovy Duo
 Live Wireless Speaker

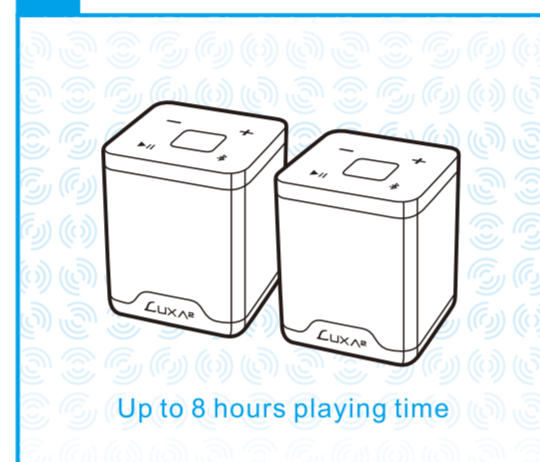
QUICK START GUIDE



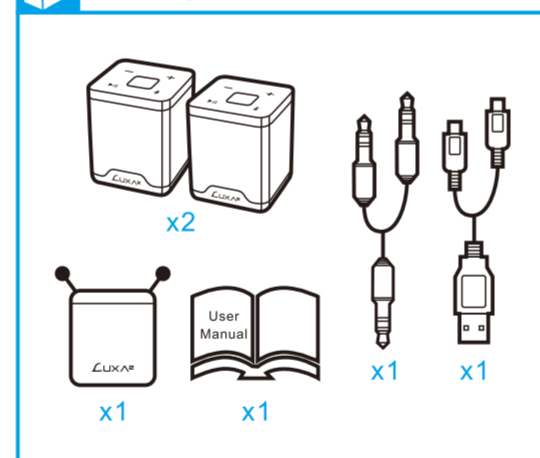
©2009 Thermaltake Technology Co., Ltd. - LUXA2 Business Division

AD-SPK-PCGDBK-00

Groovy Duo Live Wireless Speaker



Package Contents



English

Specifications:

- Bluetooth Module: CSR V2.1 + EDR
- Receive Sensitivity: -80dBm@0.1%BER
- Wireless Range: $\leq 10\text{m}$
- Audio SNR: 70dB
- Power Source: 900mAh / 3.7 V / 3.3 Wh
- Playing time: up to 8 hours
- Charging time: 2.5 hours
- Audio Output Power: 3W X 2 (Max.)
- Audio Frequency Response: 90Hz ~ 20kHz
- Dimension: 65 x 80 x 65 mm
- Weight: 538g

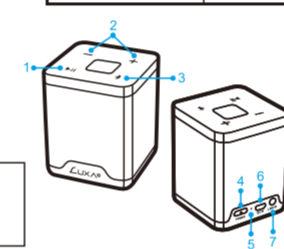
Buttons & Controls:

1. Play/Pause
2. Volume control
3. Bluetooth
4. On/Off switch
5. Battery capacity indicator
6. Micro USB input
7. Aux-In Port

- Warnings:**
- Don't drop, disassemble or attempt to repair the speaker by yourself!
 - Avoid exposure to water or high humidity.
 - Don't expose to any heat source.

Bluetooth Indicator (Mono)	Status
Quickly Flashes RED/BLUE	Pairing Mode
BLUE	Paired

Bluetooth Indicator (Stereo)	Status
Quickly Flashes BLUE/GREEN	Pairing Mode
GREEN	Paired



Deutsch

Technische Daten:

- Bluetooth-Modul: CSR V2.1 + EDR
- Empfangsempfindlichkeit: -80 dBm@0,1 % BER
- Wireless-Reichweite: $\leq 10\text{m}$
- Audio-SNR: 70 dB
- Stromversorgung: 900mAh / 3,7 V / 3,3 Wh
- Spielzeit: Bis zu acht Stunden
- Ladezeit: 2,5 Stunden
- Audio-Ausgangsleistung: 3 W x 2 (max.)
- Audio-Frequenzbereich: 90 Hz ~ 20 kHz
- Abmessungen: 65 x 80 x 65 mm
- Gewicht: 538g

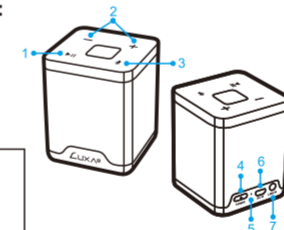
Buttons & Controls :

1. Play/Pause
2. Lautstärkeregelung
3. Bluetooth
4. On/Off Schalter
5. Batterieanzeige
6. Micro USB Eingang
7. Aux-In Port

- Warnungen:**
- Nicht fallen lassen, zerlegen oder versuchen, den Lautsprecher selbst zu reparieren.
 - Kontakt mit Wasser oder hoher Luftfeuchtigkeit vermeiden.
 - Kästen Wärmequellen aussetzen.

Bluetooth-Anzeige (Mono)	Status
Blinkt schnell RED / BLUE	Pairing-Modus
BLUE	gepaart

Bluetooth-Anzeige (Stereo)	Status
Blinkt schnell blau / grün	Pairing-Modus
GREEN	gepaart



Español

Especificaciones:

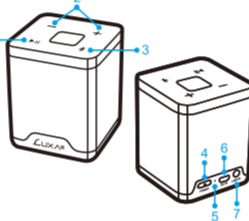
- Módulo Bluetooth: CSR V2.1 + EDR
- Sensibilidad de recepción: -80 dBm a 0,1% BER
- Alcance inalámbrico: < 10 m
- Audio SNR: 70 dB
- Alimentación: 900mAh / 3,7 V / 3,3 Wh
- Tiempo de reproducción: hasta 8 horas
- Tiempo de carga: 2,5 horas
- Potencia de salida de audio: 3 W x 2 (máx.)
- Respuesta en frecuencia: 90 Hz - 20 kHz
- Dimensiones: 65 x 80 x 65 mm
- Peso: 55g

Botones y controles:

1. Reproducción/pausa
2. Control de volumen
3. Bluetooth
4. Interruptor Encendido/Apagado
5. Indicador de capacidad de la batería
6. Salida USB
7. Puerto Aux-In

- Advertencias:**
- No desmonte ni intente reparar el altavoz usted mismo.
 - Evite la exposición al agua o a humedades altas.
 - Evite la exposición a fuentes de calor.

Indicador Bluetooth (Blanco y negro)	estado
Parpadeo en rojo / azul rápidamente	Modo de emparejamiento
AZUL	emparejado
Indicador Bluetooth (estéreo)	estado
Parpadeo BLUE / GREEN rápidamente	Modo de emparejamiento
VERDE	emparejado



العربية

المواصفات:

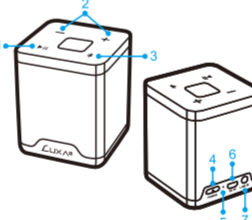
نموذج: المسؤولة الأجنبية للمركبات V2.1 + EDR
 - حساسية الاستقبال: -80dBm معدل 0,1% BER
 - النطاق الاستثنائي: أقل من 10 أمتار
 - معدل الإشارة إلى الضوضاء (SNR): 70dB
 - حساسية التردد: 90 هرتز - 20 كيلو هرتز
 - 3,7 فولت، 3,3 فولت في المساحة /
 - وقت التشغيل: حتى 8 ساعات
 - وقت الشحن: ساعتان ونصف
 - طاقة مخرجات الصوت: 3W x 2 (مáx.)
 - استجابة تكرار الصوت: 90 هرتز - 20 كيلو هرتز
 - الأبعاد: 65 × 80 × 65 مم
 - الوزن: 55 جم

الأزرار وعناصر التحكم

1. تشغيل / إيقاف مؤقت
2. عنصر التحكم في مستوى الصوت
3. بلوتوث
4. مفتاح التشغيل/إيقاف التشغيل
5. مؤشر سعة البطارية
6. مخرج USB
7. منفذ دخول المكون الإضافي

- تحذيرات:**
- لا تفسد أو تترك أو جازي إخراج أو علاج الصيانة بنفسك.
 - تجنب تعرض المساحة أثناء أو بعد الشحن.
 - لا تعرض المساحة لأي مصدر حرارة.

حالة	المؤشر بلوتوث (مونو)	المؤشر بلوتوث (ستيريو)
وضع الاقتران	يوميض بسرعة الاحمر / الازرق	يوميض بسرعة الاحمر / الازرق
مزدحم	الازرق	الاحمر

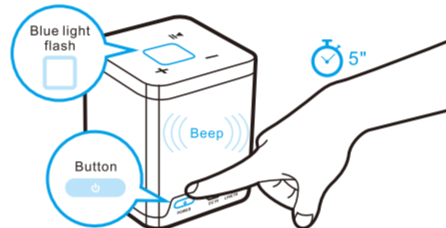


Pairing a Single Groovy Duo Speaker (Mono)

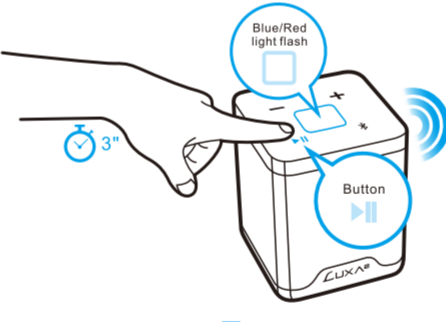
Instructions for first time pairing

To listen to your music via Bluetooth, you will need to pair your device with the Groovy Duo:

1. Make sure your device has Bluetooth capability
2. Press and hold power button for 5 seconds; indicator will start to flash followed by a beep to confirm activation.

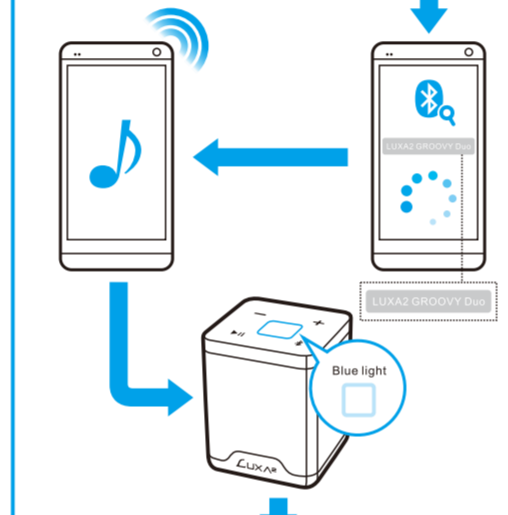


3. Next, press and hold the play/pause button for 3 seconds to activate Bluetooth search.

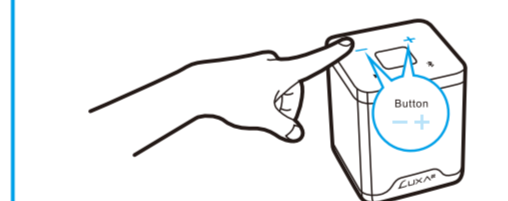


Pairing a Single Groovy Duo Speaker (Mono)

4. Follow the Bluetooth pairing instructions on your device to pair the unit
5. Pair your device with the unit by selecting 'GROOVY Duo' from your Bluetooth listings on your device



6. Press play on your device and use controls on the unit to adjust desired volume



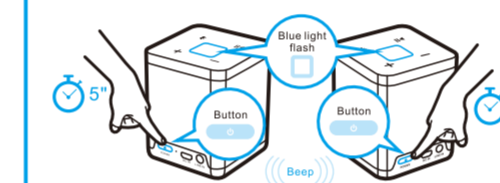
NOTE:
- Once you have successfully paired your device, you may not need to repeat the above steps as your device will automatically save this Bluetooth connection into its paired list. If you however unpair your device from the Groovy Duo, the first time pairing steps will apply.

Pairing two Groovy Duo speakers together (Stereo)

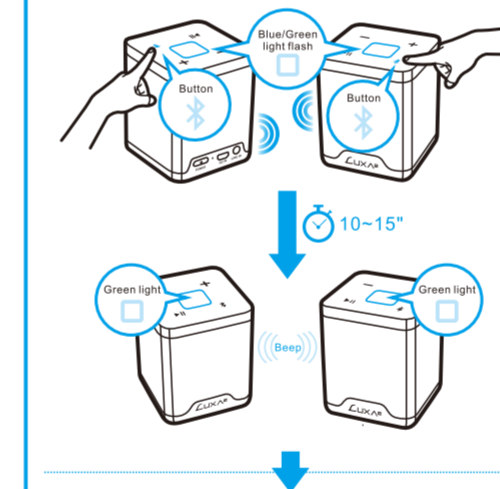
Instructions for first time pairing

To pair two Groovy Duo speakers together for stereo sound please follow the below steps:

1. Turn both speakers on by pressing and holding the power button for 5 seconds; indicator will start to flash followed by a beep.



2. Press the Bluetooth button on both speakers to activate pairing; pairing will take 10-15 seconds followed by a beep to confirm successful pairing.



Pairing two Groovy Duo speakers together (Stereo)

3. Next, press and hold the play/pause button for 3 seconds on one of the speakers to activate Bluetooth search.



4. Follow the Bluetooth pairing instructions on your device to pair the unit
5. Pair your device with the unit by selecting 'GROOVY Duo' from your Bluetooth listings on your device

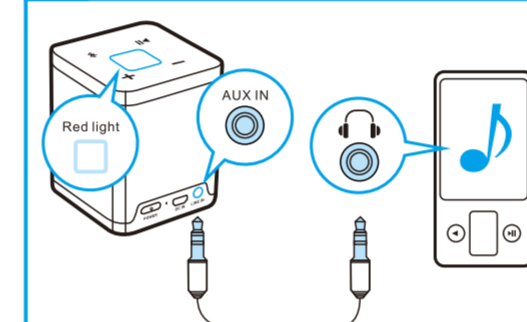


6. Press play on your device and use controls on the unit to adjust desired volume

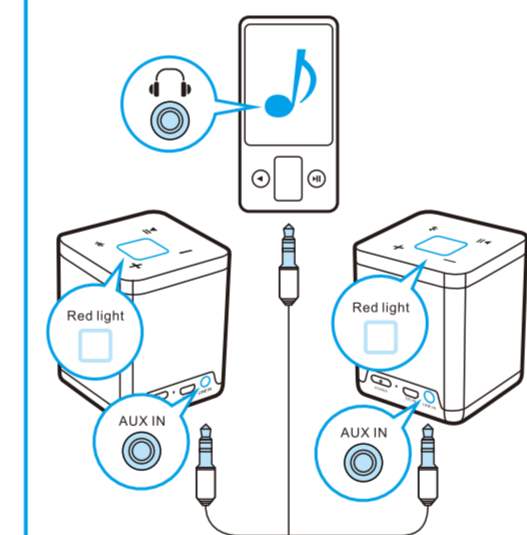


NOTE:
- Once you have successfully paired your device, you may not need to repeat the above steps as your device will automatically save this Bluetooth connection into its paired list. If you however unpair your device from the Groovy Duo, the first time pairing steps will apply.

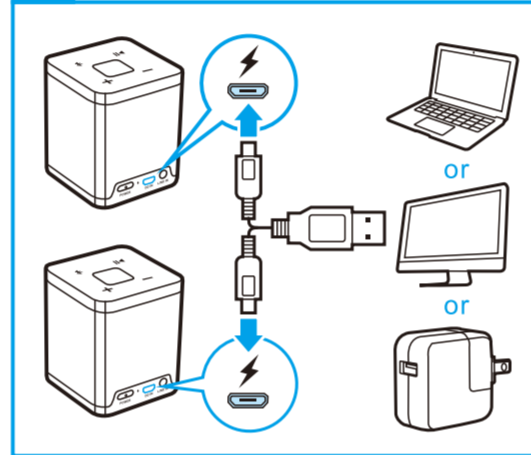
AUX In (Mono)



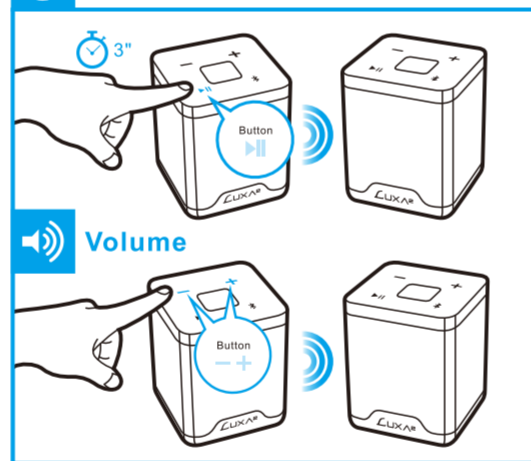
AUX In (Stereo)



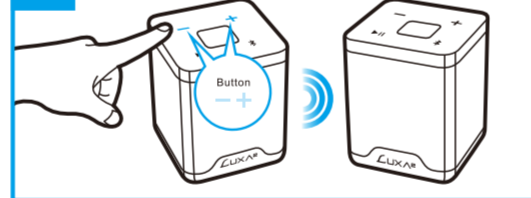
Charge In



Connection Refresh



Volume



SAFETY PRECAUTION

- Read, keep and follow these instructions.
- Heed all warnings on the product and in the user manual.
- Keep the appliance away from rain and any moisture. Do not place the unit in moist and humid conditions, which affects the pick-up of the unit and lead to malfunction.
- Place the unit on a flat surface and ventilated condition. The ventilation should not be impeded by covering the ventilation openings with items, such as newspapers, tablecloths, curtains, etc. to avoid overheating and malfunction.
- No naked flame sources, such as lighted candles, should be placed on the apparatus.
- Never spill liquid of any kind on the product. No objects filled with liquids, such as vases, shall be placed on the apparatus.
- When the unit is suddenly moved from a cold environment to a warm one, if moisture forms inside this unit, it may not operate properly. To correct this problem wait about one hour for the moisture to evaporate.
- Do not expose the unit under direct sunlight or nearby objects that radiate heat to avoid damaging the unit.
- This product is not a toy. This product contains small parts that may present a choking hazard for young children. If swallowed, it could cause severe injury or death. Seek medical attention immediately.

RECYCLING

This product bears the selective sorting symbol for waste electrical and electronic equipment (WEEE). This means that this product must be handled pursuant to European Directive 2002/96/EC in order to be recycled or dismantled to minimize its impact on the environment. For further information, please contact your local or regional authorities. Electronic products not included in the selective sorting process are potentially dangerous for the environment and human health due to the presence of hazardous substances.



This product is not a toy. This product contains small parts that may present a choking hazard for young children. If swallowed, it could cause severe injury or death. Seek medical attention immediately.

FCC Disclaimer:

This equipment has been tested and found to comply with the limits for a Class B digital device, pursuant to Part 15 of the FCC Rules. These limits are designed to provide reasonable protection against harmful interference in a residential installation. This equipment generates, uses and can radiate radio frequency energy and, if not installed and used in accordance with the instructions, may cause harmful interference to radio communications. However, there is no guarantee that interference will not occur in a particular installation. If this equipment does cause harmful interference to radio or television reception, which can be determined by turning the equipment off and on, the user is encouraged to try to correct the interference by one or more of the following measures:

- Reorient or relocate the receiving antenna.
- Increase the separation between the equipment and receiver.
- Connect the equipment into an outlet on a circuit different from that to which the receiver is connected.
- Consult the dealer or an experienced radio/TV technician for help.

Changes or modifications not expressly approved by the party responsible for compliance could void the user's authority to operate the equipment.

This device complies with Part 15 of the FCC Rules.

Operation is subject to the following two conditions:

- (1) this device may not cause harmful interference, and
- (2) this device must accept any interference received, including interference that may cause undesired operation.

Thank you for choosing LUXA2 products. If you have any question, please contact us by the following information. We will reply you as soon as possible.

Headquarter

Thermaltake Technology Co., Ltd. - LUXA2 Business Division
TEL: +886-2-8797-5788
FAX: +886-2-8797-5199
E-MAIL: info@luxa2.com
www.luxa2.com.tw

Overseas Branch

Thermaltake U.S.A. - LUXA2 Division
TEL: +1-626-968-9189
FAX: +1-626-968-7659
E-MAIL: info.usa@luxa2.com
www.luxa2.com

Thermaltake Beijing Co., Ltd. - LUXA2 Division
TEL: +86-10-8288-3703
FAX: +86-10-8288-3302
E-MAIL: info.cn@luxa2.com
www.luxa2.com.cn

Thermaltake Russia Representative Office
TEL: +7-495-739-5906
FAX: +7-495-739-5915
E-MAIL: sales@luxa2.com
www.luxa2.ru

Thermaltake Australia and New Zealand Pty Ltd. - LUXA2 Division
TEL: +61-03-9763-1622
FAX: +61-03-9763-1677
E-MAIL: info.au@luxa2.com

Thermaltake Germany GmbH - LUXA2 Division
TEL: +49(0)40/30-85-86-0
FAX: +49(0)40/30-85-86-89
E-MAIL: info.ge@luxa2.com
www.luxa2.de

★ Featured Products

PLACE AND PLAY



GroovyT

Magic Boom Box Speaker
Enjoy a new simpler way to play your music with the GroovyT. Place your smartphone device onto the speaker and the built-in inductive technology does the rest. Enjoy a fuller musical experience with the GroovyT Magic Boom Box.

THE BEST FOR YOUR BEST.



E-One

Aluminum Headset Holder
The E-ONE headphone holder provides that all important place to hang your beloved headphones. Made from high quality aluminum and topped off with a diamond cut finish, the E-ONE holder keeps your headphones on standby, on display and your audio needs within an arms grasp.

LIFE ORLY POWER SOLUTION!



ENERG 8800mAh

Power Bank Pack
The Energ 8800mAh provides the perfect power solution to meet the ever demanding power needs of your daily life. The higher capacity and provision of two USB charging ports provides simultaneous charging of multiple devices, whilst maintaining a light and compact dimension to take on your travels.

ENJOY TRUE AUDIO AND WIRELESS FREEDOM



GroovyW

Bluetooth Wireless Music Speaker
GroovyW is the World's First Multi-Functional Bluetooth Wireless Music Speaker with Near Field Communication (NFC) technology and Wireless Charging Station (Qi Compatible), optimized for use with the LUXA2 Groovy Audio Center App.

KEEPING UP YOUR LIFESTYLE!



ENERG 10400mAh

Power Bank Pack
Carrying this amount of power, the Energ 10400mAh is the king of the Energ series and is particularly suited to those planning to go on long vacations, business trips and places where a power outlet is not readily available. You won't need to worry about running out of power with this beast in hand.

POWER UP IN STYLE!



ENERG 6600mAh

Power Bank Pack
The lightweight and compact design of the Energ 6600mAh fits in the palm of your hand and conveniently into your trouser pockets and bag with minimal fuss, providing safe and reliable charging for the majority of your devices on the go.