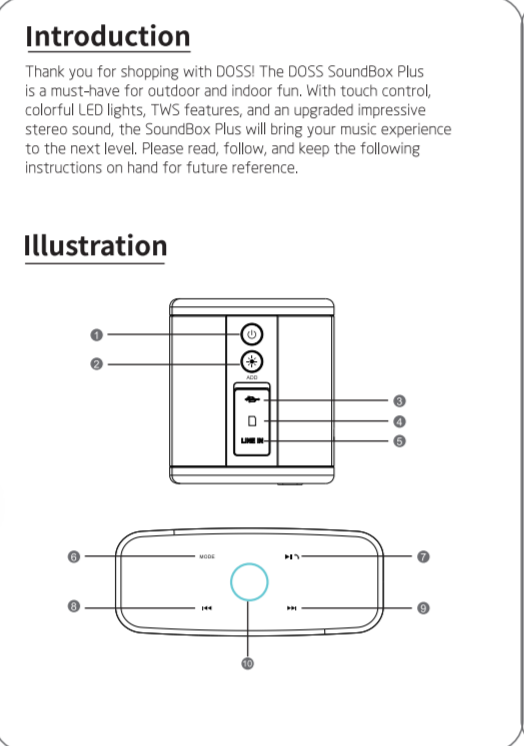
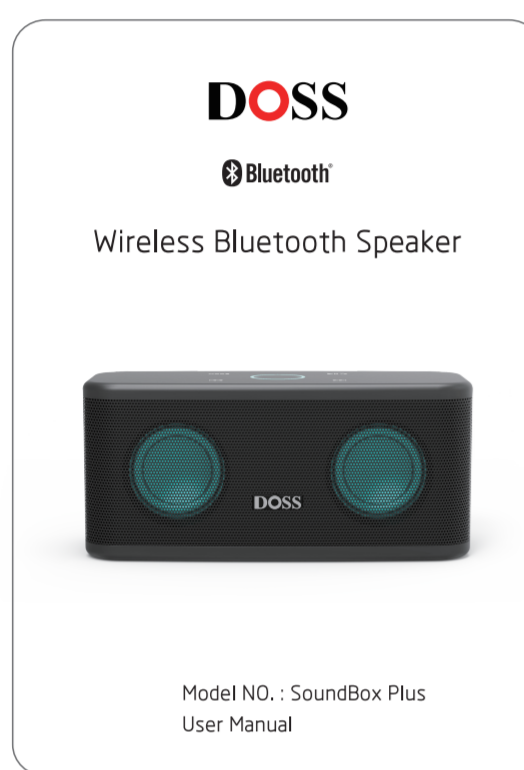


SIZE: 70X100MM



Buttons and Controls

	On/Off button
	LED light control button
	Charging port
	TF card jack
	Audio port
	Play/pause button
	Volume up button
	Volume down button

Indicators

Flashing blue	Indicates that the speaker has entered into the pairing mode and it is ready to be paired.
Steady blue	Indicates that the device is successfully paired.
Steady red	Indicates that the device has switched to the auxiliary input mode.
Steady Green	Indicates that the device has switched to the TF mode.
OFF	If there is no response in 10 seconds.

Charging Indicator

Steady red	Charging
OFF	Fully charged

Preparation

- Use the provided USB cable to charge your portable speaker directly from your computer micro USB port or the cellphone adapter (please confirm its output is 5V).
- Make sure that the speaker is fully charged before using it for the first time.
- LED light will remain RED when charging and turn off once fully charged.
- Note:
 - If the speaker heats every few seconds, please recharge it for 4-5 hours.
 - The speaker has built-in battery saver mode where it will automatically power off if not in use for 15 minutes. This function can be removed with a firmware upgrade. For assistance, please contact: support@dossav.com

Operations

• Multifunctional buttons

You want to	How to do
Turn On/Off	Press and hold power button.
Disconnect the device	Tap and hold Play/pause button.
Reconnect with last device	Tap Play/pause button.
Play/Pause	Tap Play/pause button.
Volume up	Press your finger clockwise.
Volume down	Press your finger counterclockwise.

Skip to the next track	Tap right arrow
Go to the previous track	Tap left arrow
Switch modes	Tap the "MODE" button
Answer a call	Tap Play/pause button
Reject a call	Tap and hold Play/pause button
End a call	Tap Play/pause button
Apply Siri or voice function	Tap and hold "MODE" button

Change colors

Press "MODE" button to choose light modes in the order below:

- gradual changing gradients
- alternated colors
- solid unchanging color
- random flashing colors
- light off

Apply TWS

Press "MODE" button for 3 seconds.

• Pair your speaker with your smart device

- Place your speaker and the smart device no more than 1 meter away from each other.
- Press the power button and hold for a few seconds to turn the speaker on. Upon powering on, a tone will be heard, the blue LED starts flashing, and it will be accompanied by a prompt notifying that the speaker has entered into the pairing mode.
- Turn on Bluetooth on your device and choose SoundBox Plus in the list.
- If the pairing is successful, the LED will change to solid blue in the pairing mode. After 50 seconds, please press the Play/pause button for 5 seconds and try again.
- Note: If your smart device cannot discover the SoundBox Plus, please long press the play/pause button and then try again.

• Have connecting problems via Bluetooth?

- Make sure that your device is within 1 meter from the speaker.
- Clear the Bluetooth pairing list on your device.
- Restart your device.
- Try the pairing steps above again.
- Problem still not solved? Contact DOSS customer service at support@dossav.com for assistance.

• Pair your device with the speaker via audio in cable

- When using the audio input mode, control audio playback via the connected device.
- When audio cable is plugged, play mode will automatically switch to AUXIO IN mode.

• Play music via SD card mode

- Insert capacity 2GB or below (if your micro SD card is larger than 2GB, please format it to FAT32 or FAT).
- Support MP3, MP4, WAV.
- Play other music will play in the download/USB order.

• Answer or end a call using your speaker

- When there is an incoming call, each "yes" will flicker with a red/green/blue led, while playing music, the "yes" will light up and alternate between the various colors of a rainbow.
- Simply tap the play/pause button to pick up.
- Speak with a clear voice into the built-in microphone located on the front section of the speaker.
- To the play/pause button again to end the call.

• Set true wireless stereo pairing

Start the first speaker

Turn on the speaker, press and hold the AUX button for 3 seconds.

Start the second speaker

Turn on the second speaker, press and hold the AUX button for 3 seconds.

Notes:

- Start the second speaker within 60 seconds, otherwise the stereo pairing setting of the first speaker will be canceled.
- Pairing success: the volume controlling of the master speaker is in flashing blue, the secondary is in solid white.
- If fail: the master speaker with your device via Bluetooth, the ring of the master is in solid blue, the secondary is in solid white.
- If pair the master speaker with your device via cable, the ring of the master is in solid red, the secondary is in solid white.
- The speaker will have stereo pairing automatically if they need to be paired.
- Press and hold Play/pause button for 3 seconds to cancel the stereo pairing mode.
- Enter wireless stereo pairing, you can only change the modes (Bluetooth/Audio) on the master speaker.

Use your speaker with Echo Dot

You are able to connect the Dot with SoundBox Plus via a 3.5mm aux-in cable or Bluetooth. Please follow the steps below to set up via Bluetooth:

- Download Alexa app and follow the standard setup procedure to get the dot connected to your home Wi-Fi network.
- Set your speaker to Bluetooth mode. You can press the "Play/pause" button for 5 seconds to enter in pairing status.
- Run the Alexa app, tap "More" and then tap "Settings".
- Tap the Echo dot in your list of Alexa devices and tap "Bluetooth".
- The SoundBox Plus should appear in the list of Bluetooth devices. If it does not, then press the "Play/pause" button for 5 seconds and try again. Once listed, tap on the speaker to complete the pairing process.
- To remove the device, return to Bluetooth > tap the name of the speaker > tap "Forget device".

Notes:

- Voice command will not be able to turn on/off the SoundBox Plus if you connect to it via Bluetooth/AUX cable.
- To remove the battery saver system, please contact our customer service at support@dossav.com.

Trouble shooting

Problems	Solutions
No power	Batteries may be in protection mode or drained. Plug in and charge the speaker.
Low battery/ drained	Please recharge the speaker. It takes 4-5 hours to get fully charged.
Batteries cannot be charged	Make sure you are using a USB cable provided by DOSS or from a qualified manufacturer. Use a different USB cable.
The pairing with your mobile fails	Turn off the Bluetooth on your device first and then turn on it. Remove your speaker from the Bluetooth list on the device and then re-pair it. Try pairing with other devices. Reset your speaker.
TWS mode does not work	Disconnect the Bluetooth, press and hold the "MODE" button separately.

No sound	<ul style="list-style-type: none"> Please select SoundBox Plus as the playback device. Increase the volume on your speaker and your device. Use different music source. Try connecting to a different device. Your smart device connects to the speaker together with other devices, please unpair other devices.
No sound when in aux/TF mode	<ul style="list-style-type: none"> Make sure the device connected to your speaker is on and playing music. Increase the volume on your speaker and device. Make sure the device is properly connected. Try using a different cable. Try connecting to a different device.
Poor sound quality/ buzzing sound	<ul style="list-style-type: none"> Try using different music source. Increase the volume on device. Check the device's audio settings. Charge your speaker until fully charged.
The laptop reminds to install driver	This driver is not for your speaker. It's for your laptop Bluetooth function, please contact the customer service of laptop or Windows for help.
The speaker cannot be turned off	Long press the power button for 10 seconds.
Auto power off	Contact DOSS customer service at support@dossav.com to disable auto-power off by firmware upgrade.

Warnings

- Do NOT drop, hit, or shake the device.
- Do NOT disassemble, repair, or modify the speaker.
- Do NOT use cleaning fluid that contains benzene, solvents, or acids.
- Do NOT expose the speaker to excessive heat or direct sunlight for prolonged periods of time.
- Do NOT store the device in a place with high humidity or dust.
- Do NOT place heavy objects on the speaker.
- Do NOT use the speaker near a microwave oven or wireless LAN products.
- Changes or modifications to this unit not expressly approved by DOSS Corporation responsible for compliance could void the user's authority to operate the equipment.

Specifications

- Output: 6W*2
- Power: 12.5V 200mA
- Battery: 3.6V 2250mAh
- Dimensions: 7.5" x 3.3" x 3.1" inches
- Play time: Up to 20 hours (50% volume, without light)
- Bluetooth distance: 60ft
- Warranty: One-year limited

Package Contents

- 1 x DOSS SoundBox Plus
- 1 x Micro USB charging cable
- 1 x 3.5mm aux-in cable
- 1 x User manual

Note

This equipment has been tested and found to comply with the limits for a Class B digital device pursuant to part 15 of the FCC Rules. These limits are designed to provide reasonable protection against harmful interference in a residential installation. This equipment generates, uses, and can radiate radio frequency energy and, if not installed and used in accordance with the instructions, may cause harmful interference to radio communications.

However, there is no guarantee that interference will not occur in a particular installation. If the equipment does cause harmful interference to radio or television reception, which can be determined by turning the equipment off and on, the user is encouraged to try to correct the interference by one or more of the following measures:

- Reorient or relocate the receiving antenna.
- Increase the separation between the equipment and receiver.
- Connect the equipment into an outlet on a circuit different from that to which the receiver is connected.
- Consult the dealer or an experienced radio/TV technician for help.

The device must not be enclosed or operating in conjunction with any other antenna or transmitter.

- This device complies with part 15 of the FCC Rules. Operation is subject to the following two conditions: (1) This device may not cause harmful interference, and (2) this device must accept any interference received, including interference that may cause undesired operation.
- Any Changes or modifications not expressly approved by the party responsible for compliance could void the user's authority to operate the equipment.
- The portable has been evaluated to meet general RF exposure requirement. The device can be used in portable exposure condition without restriction.

The marking information is located at the bottom of apparatus. No naked flame sources, such as lighted candles, should be placed on the apparatus. Attention should be drawn to the environmental aspects of battery disposal. The use of apparatus in moderate climates. CAUTION: danger of explosion if battery is incorrectly replaced. Replace only with the same or equivalent type. The batteries (button pack or batteries installed) shall not be exposed to excessive heat such as sunlight, fire or the like.

♻️ RECYCLING
This product bears the selective sorting symbol for Waste electrical and electronic equipment (WEEE). This means that this product must be handled pursuant to European directive 2012/19/EU in order to be recycled or dismantled to minimize its impact on the environment. User has the choice to give the product to a competent recycling organization or to the retailer when he buys a new electrical or electronic equipment.

For updates, promotions and experience sharing, join our customer community.

[f @dossav](#)
[@dossav](#)
[@dossdirect](#)
support@dossav.com
<https://www.dossav.com>
 1-853-275-3877 Mon-Fri 9AM-5PM PDT (USA)