



Photo 1 the front side of linear module

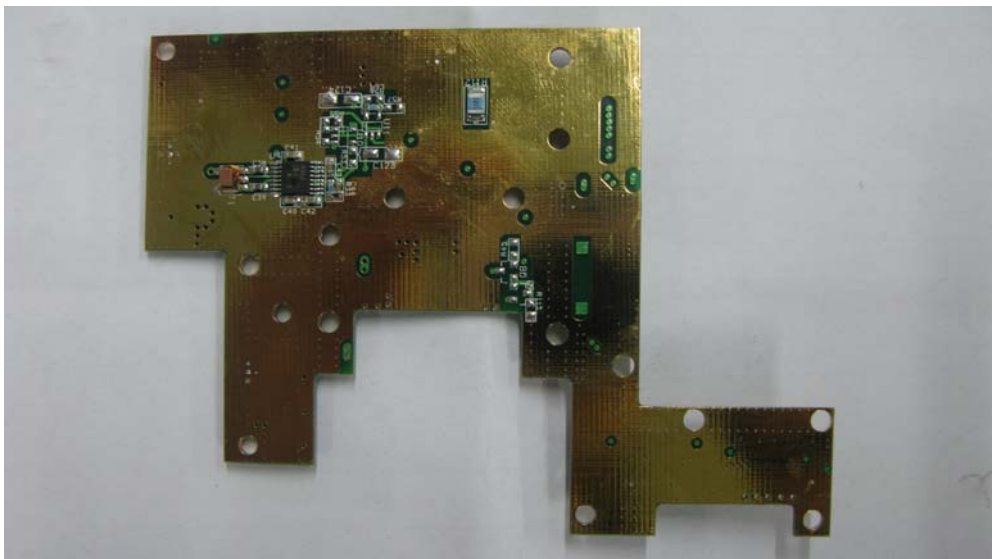


Photo 2 the rear side of linear module

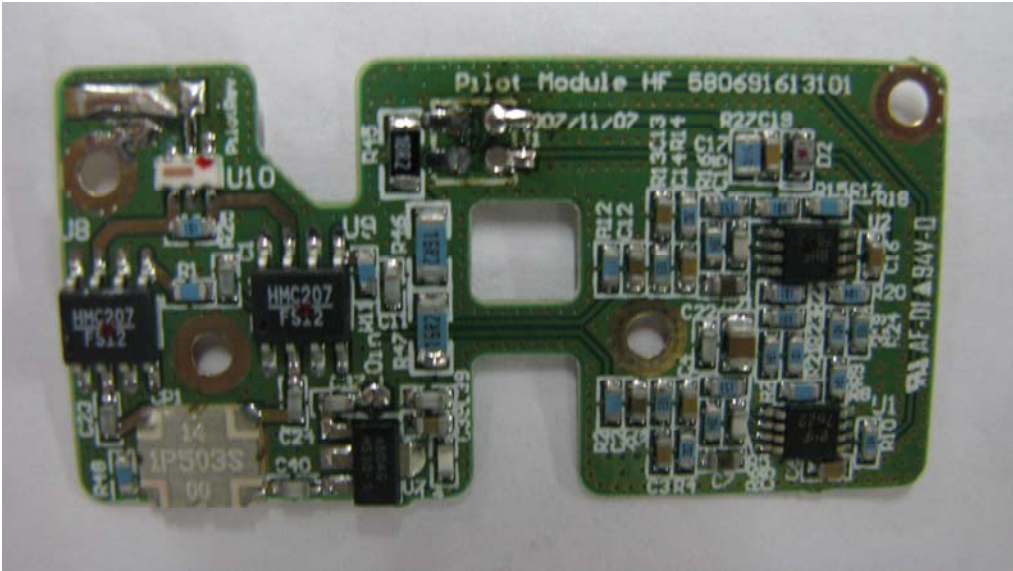


Photo 3 the front side of pilot board 1

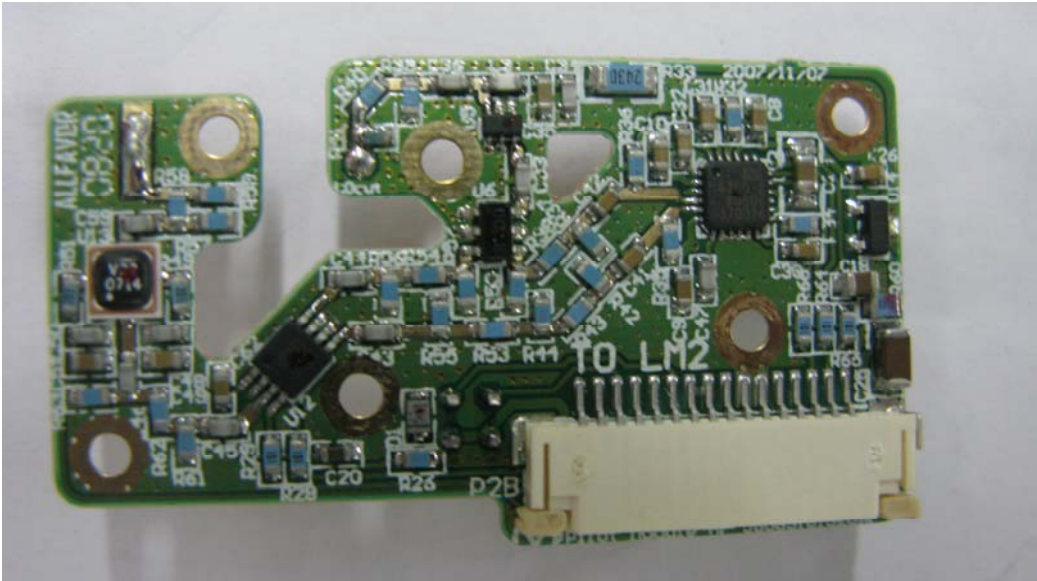


Photo 4 the front side of pilot board 2

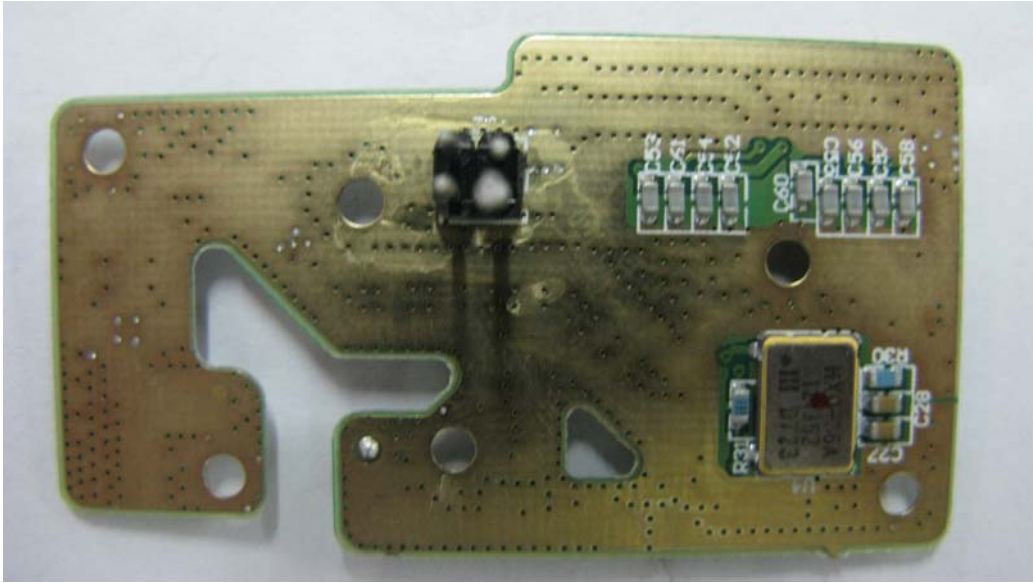


Photo 5 the rear side of pilot board 2

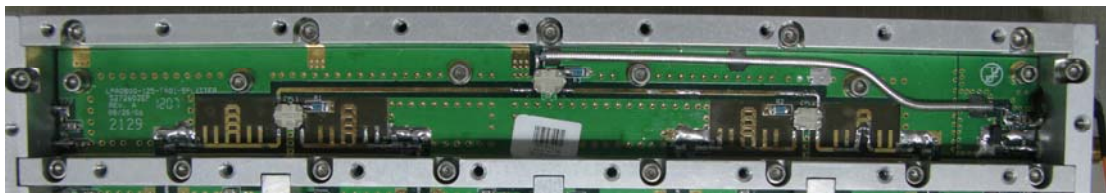


Photo 6 splitter board

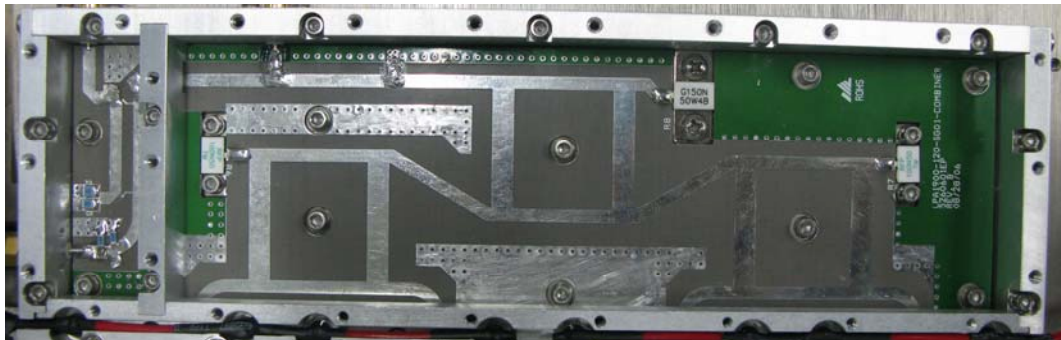


Photo 7 combiner board



Photo 8 main board

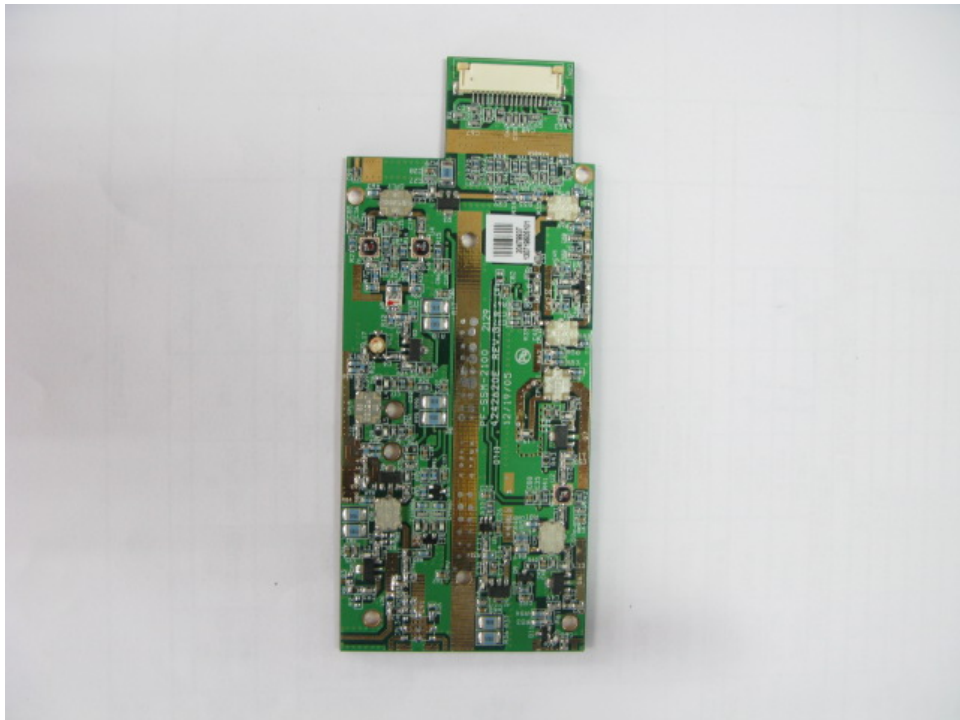


Photo 9 the front side of SSM (small signal module)

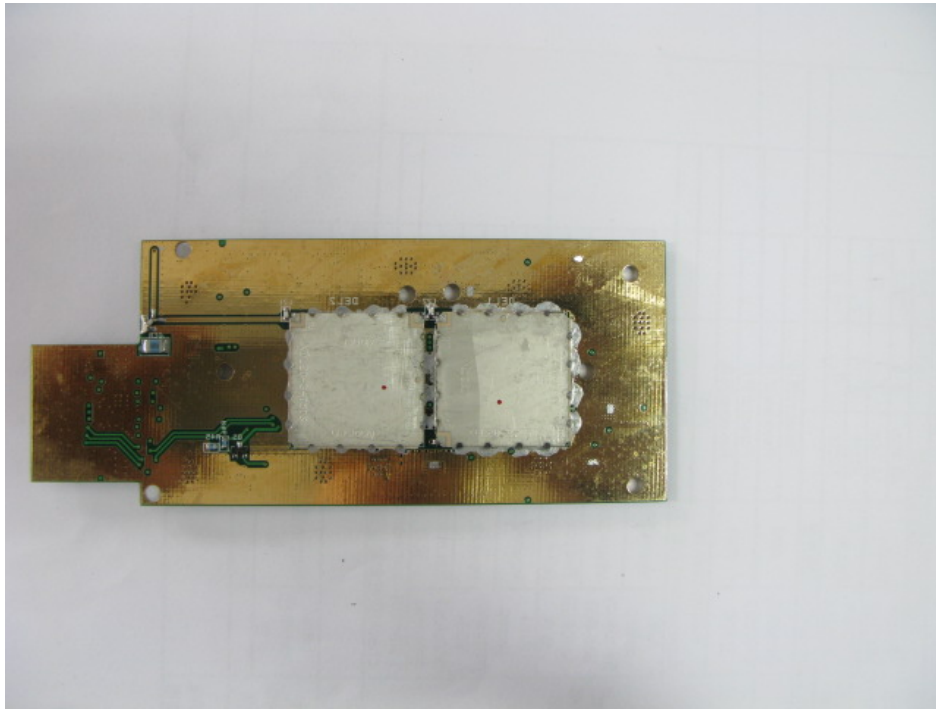


Photo 10 the rear side of SSM (small signal module)

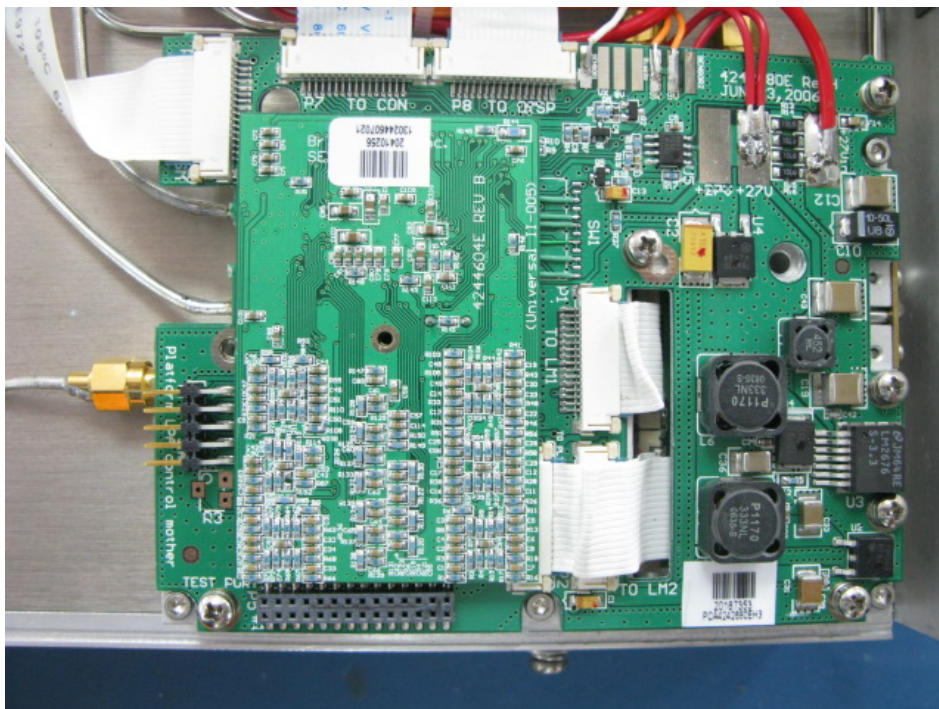


Photo 11 control mother board

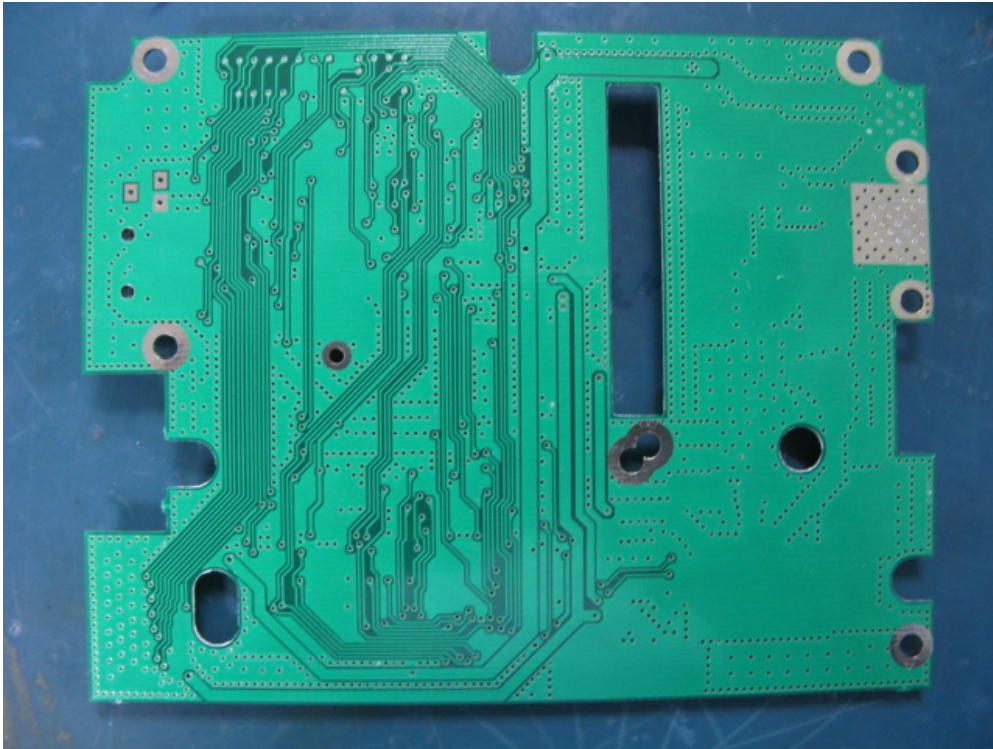


Photo 12 the rear side of control mother board

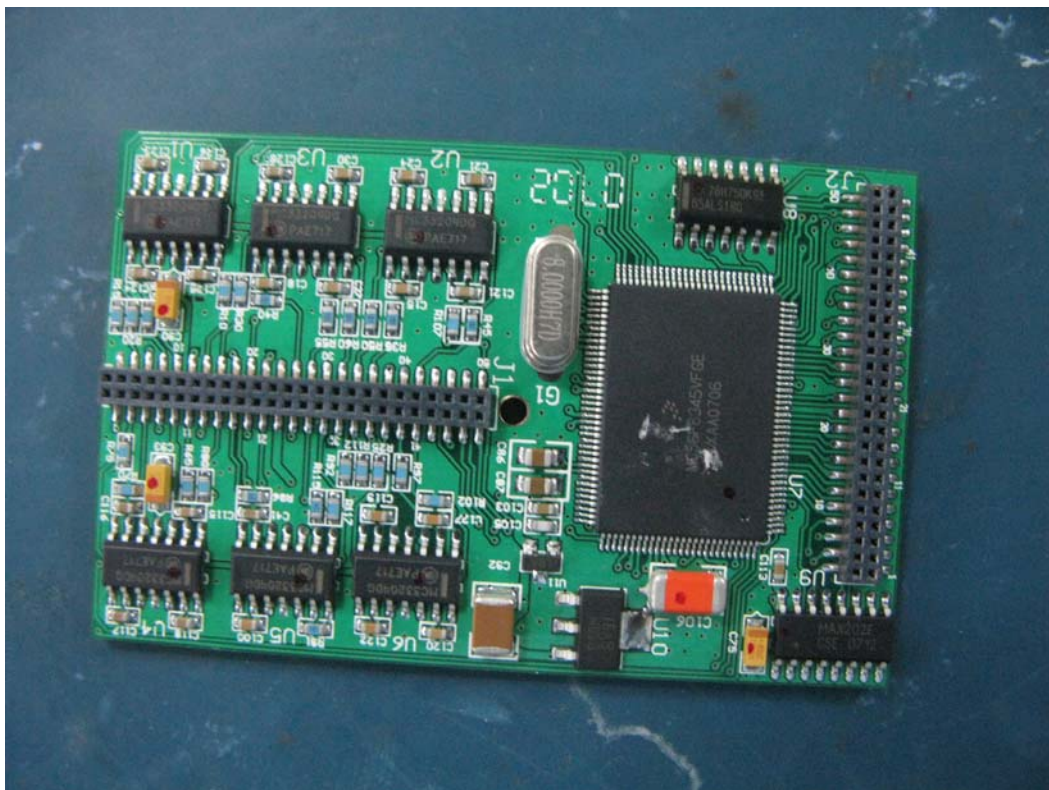


Photo 13 the front side of control board

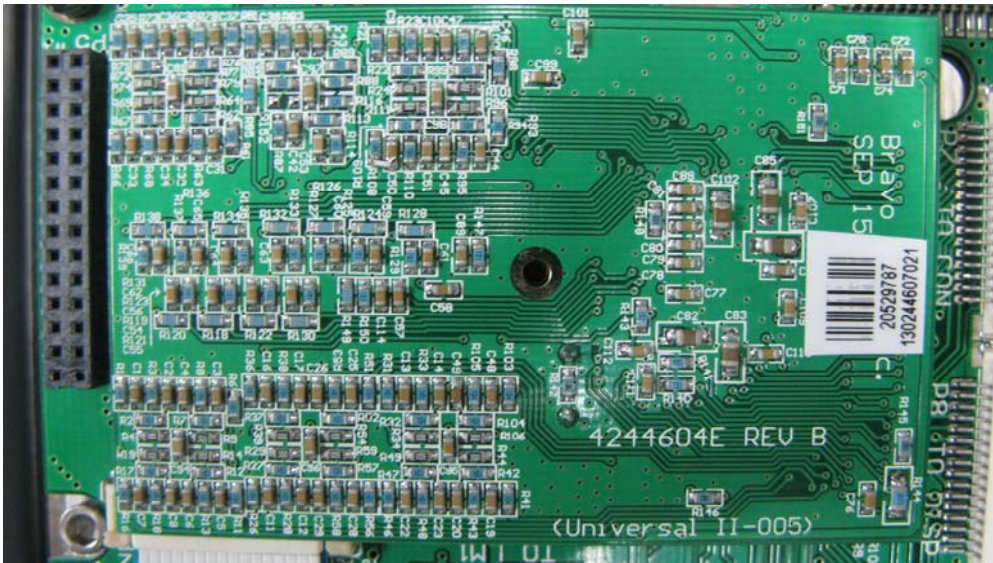


Photo 14 the rear side of control board

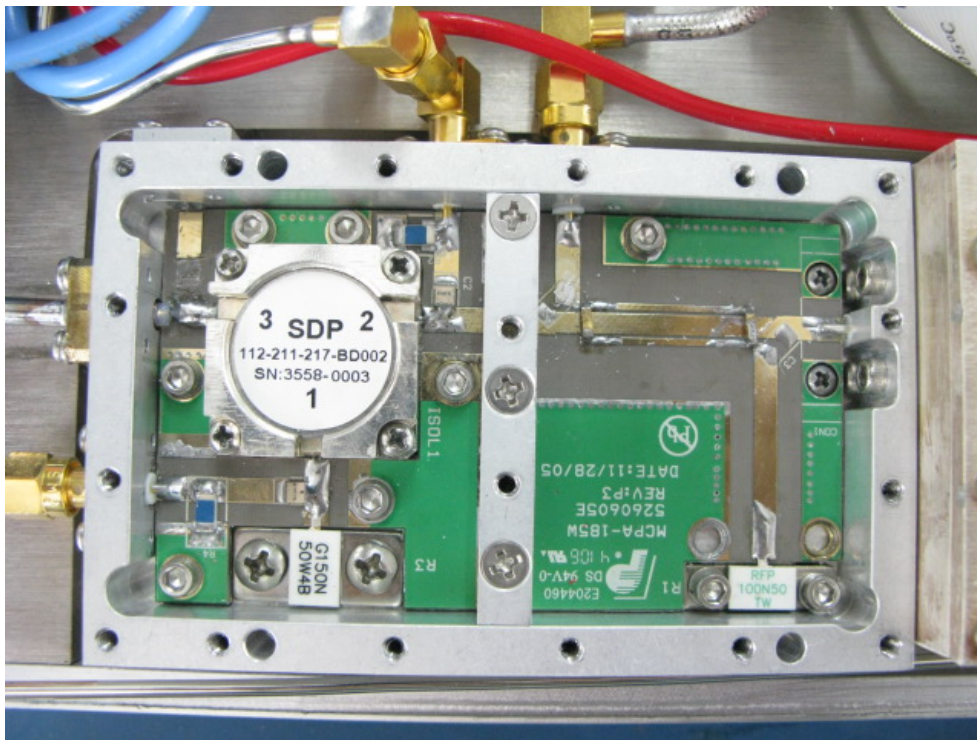


Photo 15 isolator board

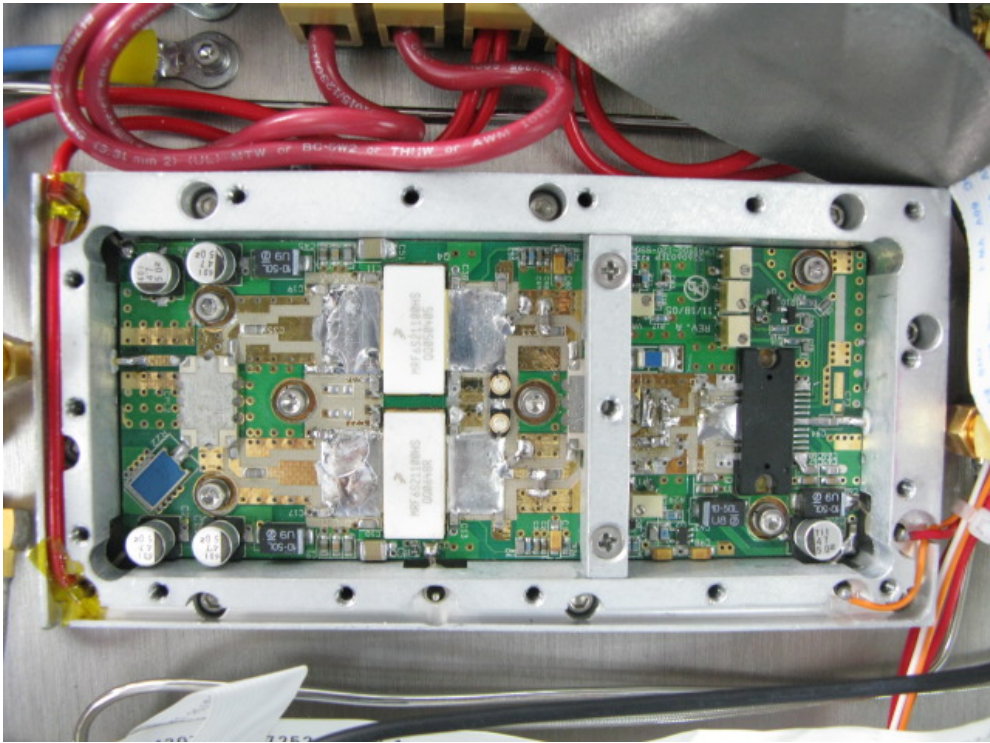


Photo 16 MAIN\_REVA board

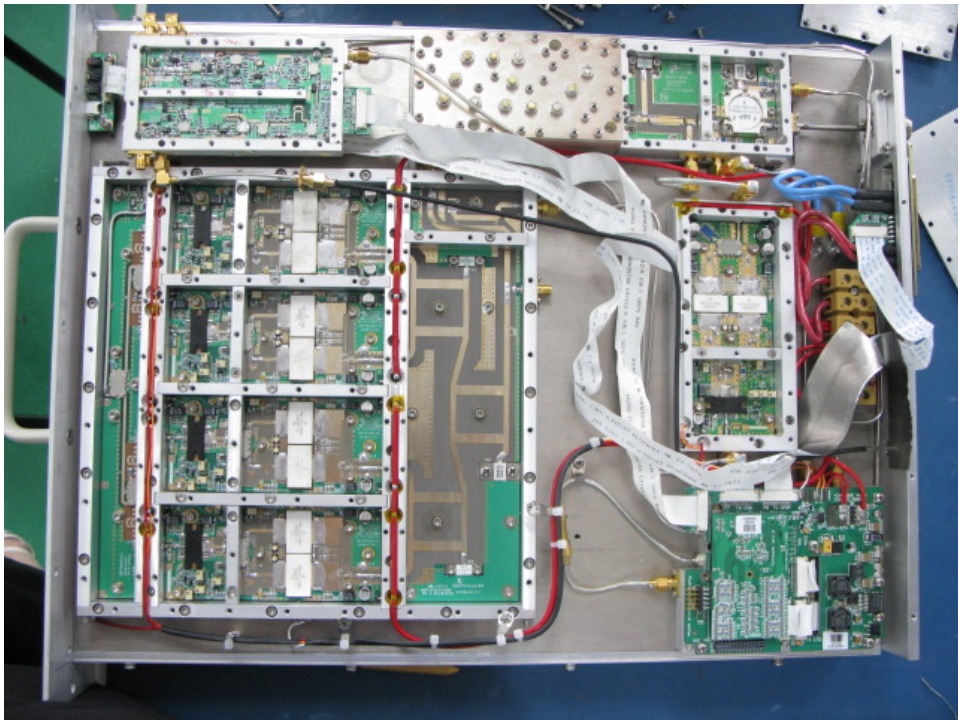


Photo 17 the whole unit