

Since this device is always used with vehicle, it is not sold to general end users separately. Therefore there is no user manual of this device by alone. This document is an excerpt from a user manual of vehicle.

## FCC WARNING

Changes or modifications not expressly approved by the party responsible for compliance could void the user's authority to operate the equipment.

## FCC/IC

This device complies with Part 15 of FCC Rules and Industry Canada licence-exempt RSS standard(s). Operation is subject to the following two conditions:

- (1) this device may not cause interference, and
- (2) this device must accept any interference, including interference that may cause undesired operation of this device.

Le présent appareil est conforme aux la Partie 15 des règles de la FCC et CNR d'Industrie Canada applicables aux appareils radio exempts de licence. L'exploitation est autorisée aux deux conditions suivantes:

- (1) l'appareil ne doit pas produire de brouillage, et (2) l'utilisateur
- (2) l'utilisateur de l'appareil doit accepter tout brouillage radioélectrique subi, même si le brouillage est susceptible d'en compromettre le fonctionnement.

# SMART KEY SYSTEM

EUAU61660

## Smart key system

The smart key system enables the following operations to be carried out without using a mechanical key.

- Power "ON/OFF"
- Engine start and stop
- Steering lock release and locking
- Seat lock release

### TIP

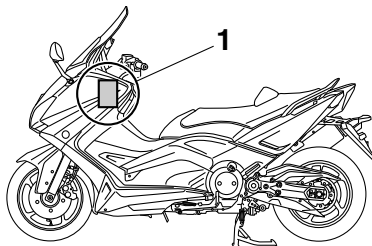
To preserve battery power, the smart key will turn off automatically about a week after the vehicle is last used. Turn the smart key on before using the vehicle again.

EWA14703

### **WARNING**

- Keep implanted pacemakers and defibrillators, as well as other electric medical devices away from the smart key system antenna (see illustration).
- Radio waves transmitted by the antenna may affect the operation of such devices when close by.
- If you have an electric medical device, consult a doctor or the

device manufacturer about any risk of possible interference before using this vehicle.



1. Vehicle mounted antenna

ECA15762

### **NOTICE**

The smart key system uses weak radio waves. The smart key system may not work normally in the following situations.

- When the smart key is placed in a location exposed to strong radio waves or other electromagnetic noise.
- When there are facilities nearby that are emitting strong radio waves e.g. TV towers, power plants, broadcasting stations,

airports etc.

- When you are carrying or using communication equipment such as radios or mobile phones in close proximity of the smart key.
- When the smart key is in contact with or covered by metallic objects.
- When other vehicles equipped with a smart key system are nearby.

In such situations, move the smart key to another location and perform the operation again. If it still does not work, use the mechanical key to carry out the operation in emergency mode (refer to Page 6-1).

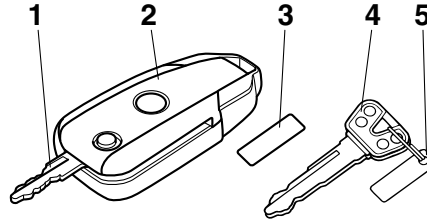
## Handling of mechanical key and smart key

EAU61640

EWA17950

### **WARNING**

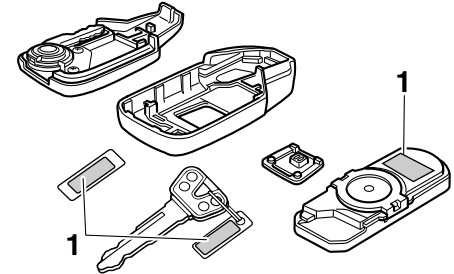
- The smart key should be carried by the driver. Do not store it on the vehicle.
  - When the smart key is within operating range, exercise due care because other people not carrying the smart key can also start the engine or operate the vehicle.
- 
- Included with the vehicle are one smart key, one smart key identification tag, one mechanical key and one mechanical key identification tag. Keep the mechanical key and tag separate from the smart key and tag. Should you lose the smart key, the mechanical key will serve as a back up. We also recommend that you note down the identification number in a **just in case you lose the identification tag**.



1. Mechanical key
2. Smart key
3. Smart key identification number tag
4. Mechanical key
5. Mechanical key identification number tag

- If the smart key and tag are lost or damaged, and there is no record of the identification number, all the parts of the smart key system will need to be replaced.
- The identification number of the smart key is displayed on the inside of the smart key. The smart key identification number (6 digits) and mechanical key identification number (1 letter + 4 digits) are displayed on the two respective identification tags as well. By inputting

the identification number of the smart key in an emergency, the engine can be started and the various locks can be released without using the smart key. Please refer to emergency mode on page 6-1 on how to operate the smart key system in an emergency.



1. ID number

### **NOTICE**

ECA21570

The smart key has precision electronic components. Observe the following precautions to prevent possible malfunction or damage.

- Do not drop, bend, or subject the smart key to strong impacts.
- Do not allow the smart key to

# SMART KEY SYSTEM

EAU61670

get wet.

- Do not put heavy objects on top of the smart key.
- Do not leave the smart key in a place exposed to direct sunlight, high temperature, or high humidity.
- Do not cut, drill, or attempt to modify the smart key.
- Keep the smart key away from strong magnetic fields and magnetic objects such as key holders, TVs, and computers.
- Keep the smart key away from electric medical equipment.
- Do not allow oils, polishing agents, fuel, or any strong chemicals to come in contact with the smart key. The smart key body may become discolored or crack.

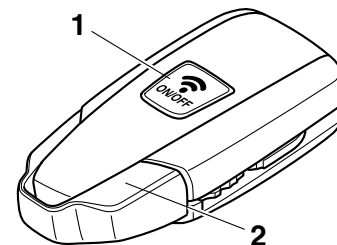
## TIP

- The expected battery life is approximately 2 years, but this may vary according to operating conditions.
- The smart key uses battery power even when it is away from the ve-

hicle.

- If the smart key continually receives radio waves, the battery will discharge quickly in reaction to this. (For example, when placed in the vicinity of electrical products such as televisions, radios, or computers.)
- Replace the battery when the smart key system indicator light flashes for 20 seconds when the power of the vehicle is turned on. (Refer to page 3-4 on how to replace the battery)
- If the smart key system indicator light does not come on when you press the lock / unlock switch, the smart key battery may be discharged or the smart key may be faulty. After replacing the battery, contact your Yamaha dealer if the smart key system does not operate normally.
- You can register up to six smart keys for the same vehicle. Please contact your Yamaha dealer regarding spare smart keys.

## Smart key



1. Lock/unlock switch
2. Smart key system indicator light

This model is equipped with a smart key system. When the smart key is activated and brought within range, the smart key system allows you to operate the vehicle without having to physically insert or remove the key.

### To activate or deactivate the smart key

To activate or deactivate the smart key, press and hold the smart key button for approximately one second to switch the smart key from on to off. When the smart key is turned off (deactivated), the vehicle cannot be operated even if

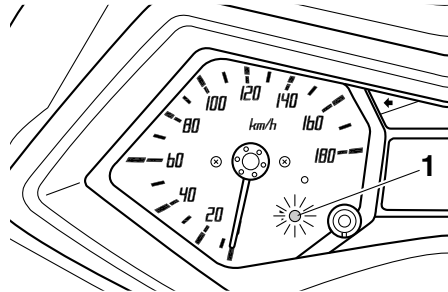
the smart key is brought within range of the vehicle. Turn the key on (activate it) and bring it within range to operate the vehicle.

EAU61600

## How to replace the battery of the smart key

Please replace the battery with in the following situations.

- The key signal light flashes for about 20 seconds when the power of the vehicle is turned ON.
- When the smart key system does not receive signals sent from the smart key.



1. Key signal light “”

EWA14722

### **WARNING**

- The battery and other removable parts may cause injury if swallowed. Keep the battery and other removable parts away

from children.

- Do not expose the battery to direct sunlight or other heat sources.

ECA15782

### **NOTICE**

- Use a cloth when disassembling with a screwdriver etc. Direct contact with hard objects may damage or scratch the key.
- Make sure you install the battery with the poles in the correct positions.
- Take precautions to prevent the waterproof seal from being damaged or contaminated by dirt.
- Do not touch the internal circuits and terminals. This may result in malfunctions.
- Do not apply excessive force to the smart key when replacing the battery.

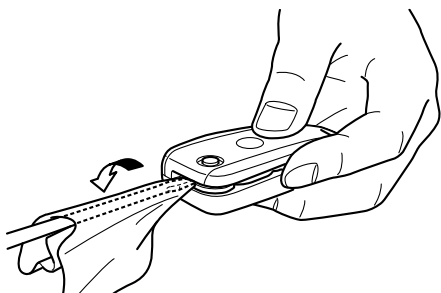
## How to replace the battery

1. Open the case of the smart key.

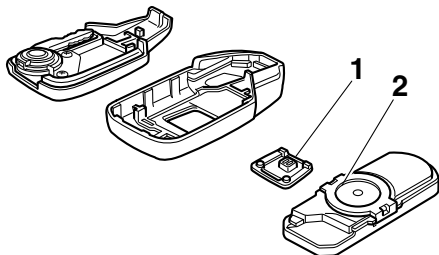
# SMART KEY SYSTEM

EAU61570

3



2. Remove the cover of the battery.



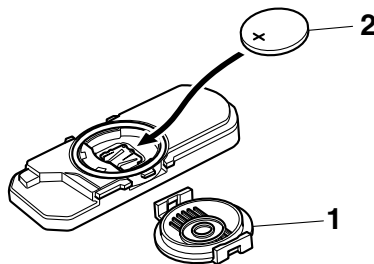
1. Switch plate
2. Battery cover

3. Note the polarity of the battery.
4. Remove the battery.

**TIP** \_\_\_\_\_  
Dispose of the removed battery in accordance with local regulations.

5. Replace the battery with a new one.

**Battery used:**  
Button battery CR2025 × 1 unit



1. Battery cover
2. Battery

6. Attach the cover of the battery.
7. Re-assemble the smart key.

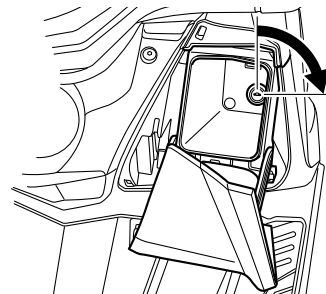
**TIP** \_\_\_\_\_  
Take note of the assembly direction of the switch plate.

## Mechanical key

The mechanical key can be used when the smart key is lost or its battery is discharged, or whenever the smart key system is not operating normally. The seat lock can be released, the cargo can be removed, and the vehicle battery can be replaced using the mechanical key.

### To release the seat lock

Insert the mechanical key into the lock inside front storage compartment B and turn it clockwise.



**TIP** \_\_\_\_\_

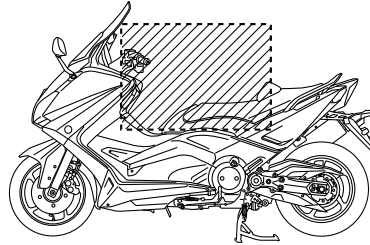
- Be sure that the seat is properly secured before starting off.
- Do not store the mechanical key in

the rear storage compartment or lock it in front storage compartment B. In the event of an emergency, you will need the mechanical key to unlock the seat lock, access the rear storage compartment, and operate the vehicle in emergency mode (see page 6-1).

EAU61580

## Operating range of the smart key system

The operating range of the smart key system is about 0.8 m (3.15 in.) from the center of the handlebars.



### TIP

- As the smart key system uses weak radio waves, the operating range may be affected by the surrounding situation.
- When the battery of the smart key is discharged, the smart key may not work, or its operating range become very small.
- The smart key may not work when it is much higher than the vehicle or close to the ground.
- If the smart key is in a locked state,

the smart key system will not work even if you carry the smart key with you. If the smart key system does not work, check the lock/unlock state of the smart key.

- If you continuously operate the start switch, OFF/steering lock switch, or seat open/parking switch when the smart key is out of range or cannot communicate with the vehicle, all switches will be temporarily disabled.
- The interior of the front trunk and rear trunk may block communication between the smart key and vehicle. If the rear trunk is locked with the smart key inside, the smart key system may be disabled. The smart key must always be carried by the driver.
- When leaving the vehicle, make sure you apply the steering and carry the smart key with you. It is recommended that you keep the smart key in a locked state.

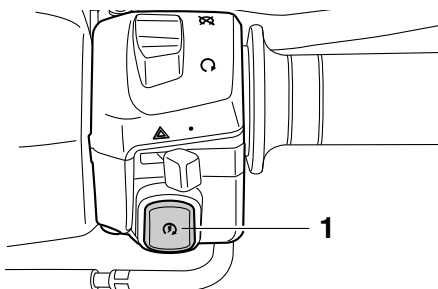



# SMART KEY SYSTEM

EAU61630

## Vehicle power ON and steering lock release

1. With the smart key in operating range and the vehicle in the unlocked state, press the start switch for at least one second.



1. Start switch “

### TIP

- The key signal light will flash if the steering lock cannot automatically release itself. Try moving the handlebars gently to the left or right

and then operate the steering unlock function again.

- If the steering continues to be locked and will not release, the key signal light will flash 16 times and the steering lock release operation will stop midway. Move the handlebar gently to the left and right to help release the steering lock and then operate the steering unlock function again.
- The power of the vehicle will not be turned on if the steering lock is not released completely.

ECA15823

### NOTICE

**If the steering lock will not release and the key signal light on the meter is flashing, consult your Yamaha dealer about a possible malfunction in the smart key system.**

### TIP

Even when the vehicle is parked in a location partitioned by a fence or the glass window of a shop, if the vehicle is in the operating range of the smart key system, other people who do not have

a smart key will be able to start the engine, lock the seat, or release the steering lock. Please keep the smart key system in a locked state in such situations. (Refer to page 3-3 on how to lock/unlock the smart key.)



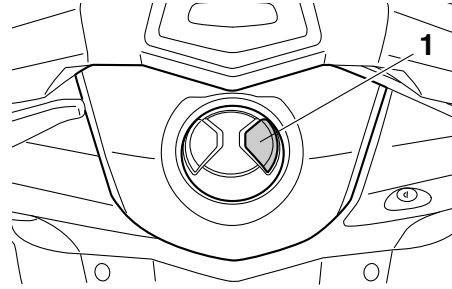
3. The power of the vehicle is turned ON once the steering lock is completely released. In this case, the key signal light will go off and the display will return to normal.

EAU61690

## Powering off the vehicle

To turn the vehicle off, have the smart key unlocked (on) and within operating range, press the OFF/steering lock switch. The smart key system will sound once to confirm that the vehicle has been successfully turned off.

If the smart key is not within operating range or cannot communicate with the vehicle when you press the OFF/steering lock switch, the power of the vehicle will not be turned off and the smart key system will sound for three seconds (smart key system indicator light will also flash) to alert you that the power was not successfully turned off. Confirm the location and condition of the smart key and try powering off the vehicle again.



1. OFF/steering lock switch

## TIP

- The driver must turn off the power of the vehicle manually.
- The power of the vehicle will not turn off automatically even if the smart key is moved out of operating range of the smart key system.
- The power of the vehicle cannot be turned off when the vehicle is running. Be sure to stop the vehicle in a safe place when turning off the power.
- Even if there is no smart key, the power supply can be turned OFF if the power OFF operation is carried out again while the key signal light on the meter is flashing.

- Please refer to the emergency mode in Page 6-1 on how to turn ON the power without a smart key.

# SMART KEY SYSTEM

EAU61610

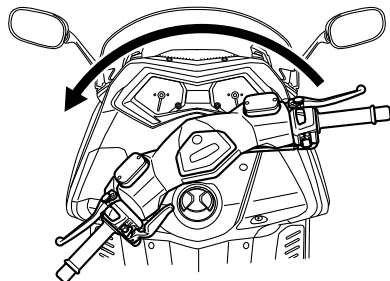
## How to steering lock

After turning OFF the power of the vehicle, move the vehicle to a safe parking place. Turn the handlebars fully to the left and then press the OFF/steering lock switch for at least one second.

3

### TIP

- If the steering lock function locks as normal, the system will sounds once.
- If the steering lock function does not lock correctly, the system will sound for three seconds and the key signal light will flash. Turn the handlebar fully to the left one more time and try locking the steering again.



EWA14742

### **WARNING**

**Do not operate the steering lock while the vehicle is moving.**

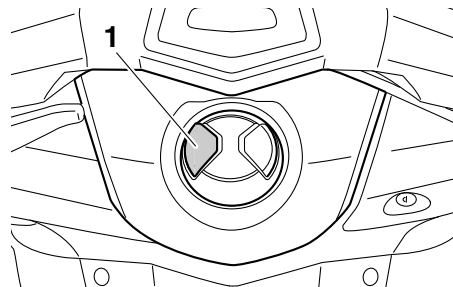
### TIP

- The handlebars must be turned manually. The steering lock function will not turn the handlebars for you.
- Before leaving the vehicle, make sure you've applied the steering lock and have the smart key. It is recommended that you keep the smart key system in a locked state.

EAU61680

## Seat opening and closing

1. With the smart key in operating range, press the seat open/parking switch.



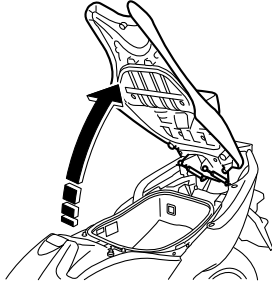
1. Seat open/parking switch
2. The seat lock will be released upon authentication of the smart key.

EWA17940

### **WARNING**

**Do not operate the seat open/parking switch while the vehicle is moving.**

3. Lift up the front part of the seat to open the seat.



To close the seat, lower the seat and push it down to lock it in place.

## TIP

- Make sure the seat is properly closed before starting off.
- The seat can be opened mechanically in the event of an emergency. See emergency mode on page 6-1 for more information.

EAU61590

## Parking mode

The steering is locked, and the hazard lights and turn signal lights can be turned on, but all other electrical systems are off.

## To use the parking mode

1. Lock the steering. (Refer to Page 3-9)
2. Press and hold the seat open/parking switch for at least one second.
3. When the smart key is authenticated, the smart key system mode will change to parking mode and sound twice.

## TIP

- If you try to enter parking mode without locking the steering first, the smart key system will sound three times and the smart key system light will flash.
- The hazard switch and turn signal indicator lights can be operated in parking mode.
- The key signal light will come on while in the parking mode.

- The seat cannot be opened or closed while in parking mode.

ECA10062

## NOTICE

**Do not use the hazard lights for an extended length of time with the engine not running, otherwise the battery may discharge.**

## To exit parking mode

Press and hold the seat open/parking switch. Upon authentication of the smart key, parking mode is cancelled and the system will sound once.