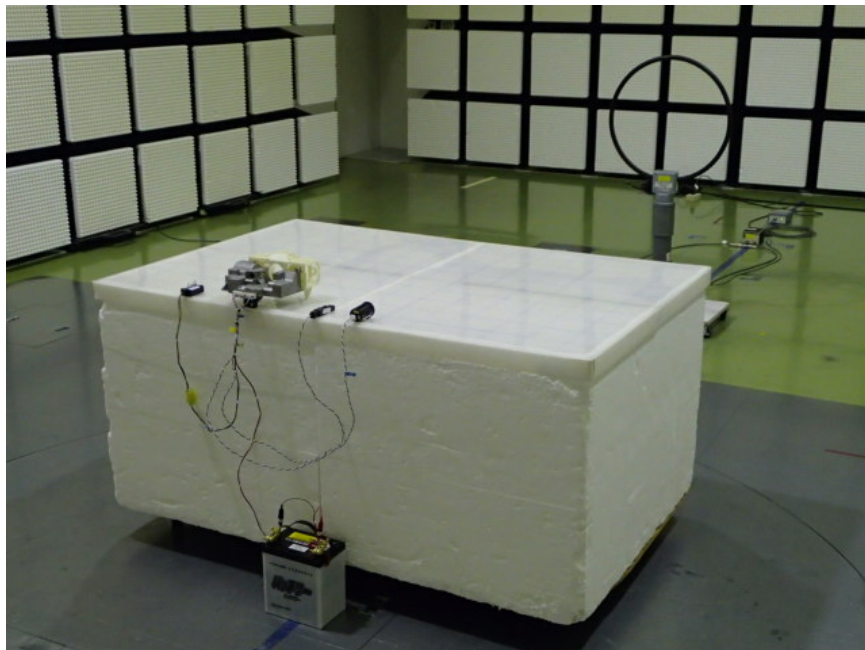


### **APPENDIX 3: Photographs of test setup**

#### **Radiated Emission**



**Photo 1**



**Photo 2**

---

**UL Japan, Inc.**

**Head Office EMC Lab.**

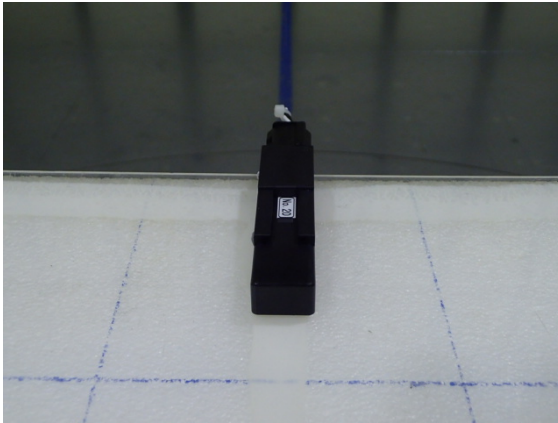
4383-326 Asama-cho, Ise-shi, Mie-ken 516-0021 JAPAN

Telephone : +81 596 24 8999

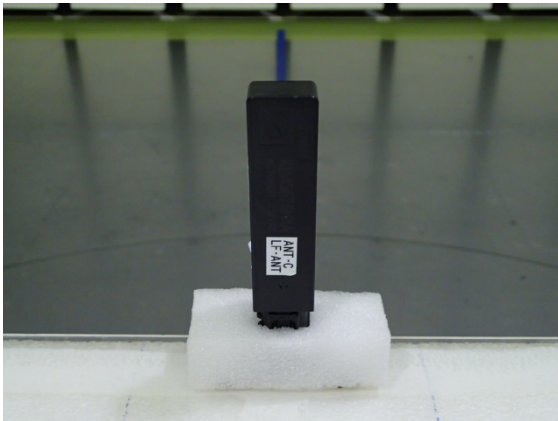
Facsimile : +81 596 24 8124

**Worst Case Position**

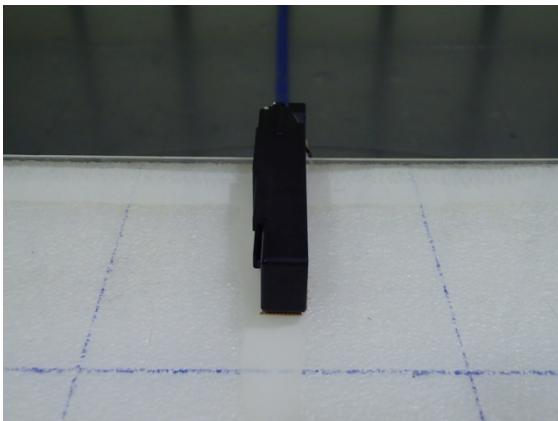
**Ant**  
Below30MHz: X-axis  
Above30MHz Hori:X / Vert:X  
**X-axis**



**Y-axis**



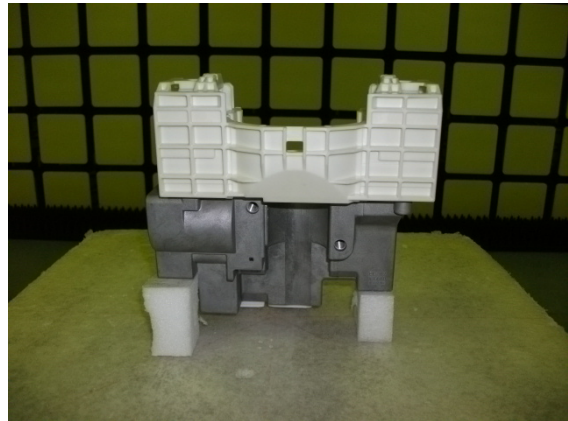
**Z-axis**



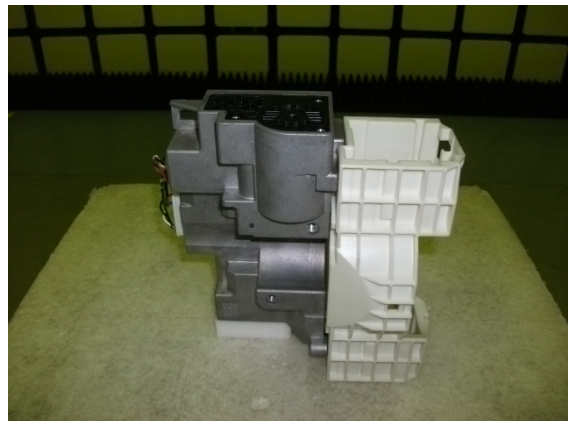
**ECU**  
Below30MHz: X-axis  
Above30MHz Hori:Z / Vert:X  
**X-axis**



**Y-axis**



**Z-axis**



**UL Japan, Inc.**

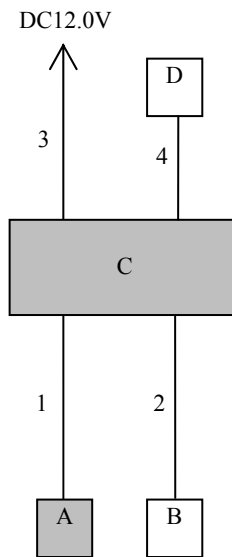
**Head Office EMC Lab.**

4383-326 Asama-cho, Ise-shi, Mie-ken 516-0021 JAPAN

Telephone : +81 596 24 8999

Facsimile : +81 596 24 8124

## 4.2 Configuration and peripherals



\* Cabling and setup were taken into consideration and test data was taken under worse case conditions.

### Description of EUT and Support equipment

No.	Item	Model number	Serial number	Manufacturer	Remarks
A	LF antenna	-	No.20	Mitsubishi Electric Corporation Himeji works	EUT
B	Antenna coil (Immobilizer)	-	No.16	-	-
C	Keyless System SSU	SKE133-02 (Type No.:X1T838)	20131224-S3 (No.12)	Mitsubishi Electric Corporation Himeji works	EUT
D	SW Box 1	-	No.16	Mitsubishi Electric Corporation Himeji works	-

### List of cables used

No.	Name	Length (m)	Shield		Remark
			Cable	Connector	
1	Antenna Cable	1.2	Unshielded	Unshielded	-
2	Antenna Cable	1.2	Unshielded	Unshielded	-
3	DC Cable	1.2	Unshielded	Unshielded	-
4	Signal Cable	0.9	Unshielded	Unshielded	-

**End of Report**

**UL Japan, Inc.**

**Head Office EMC Lab.**

4383-326 Asama-cho, Ise-shi, Mie-ken 516-0021 JAPAN

Telephone : +81 596 24 8999

Facsimile : +81 596 24 8124