

APPENDIX 3: Photographs of test setup

Radiated Emission



Photo 1

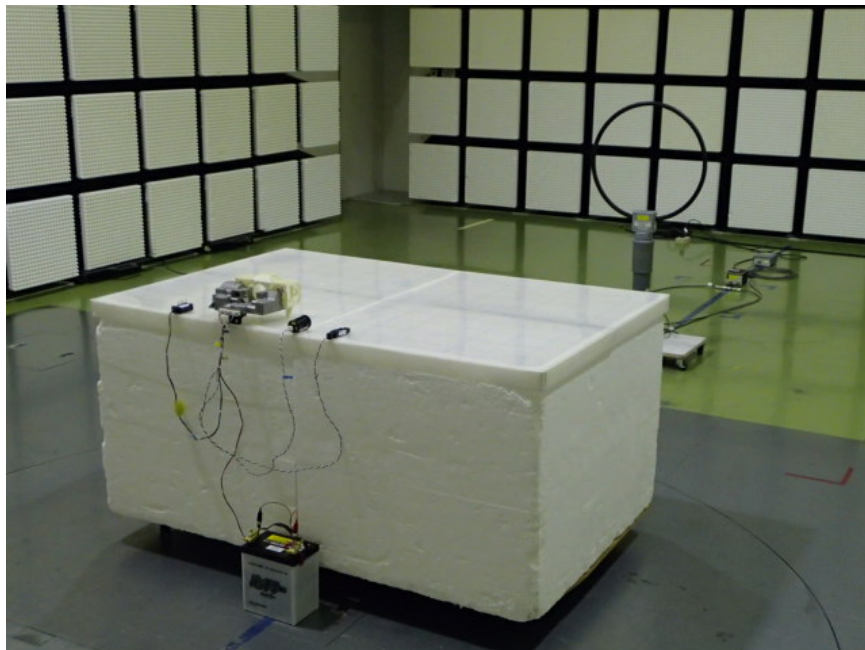
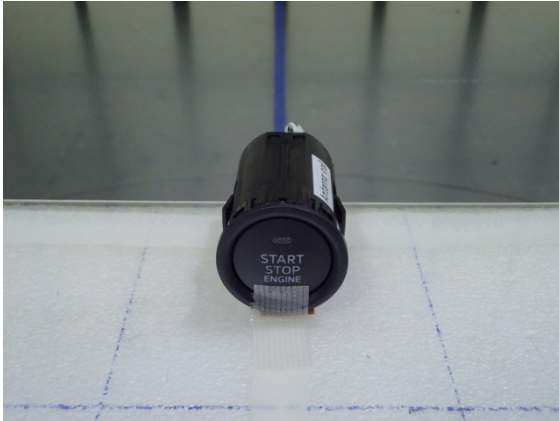


Photo 2

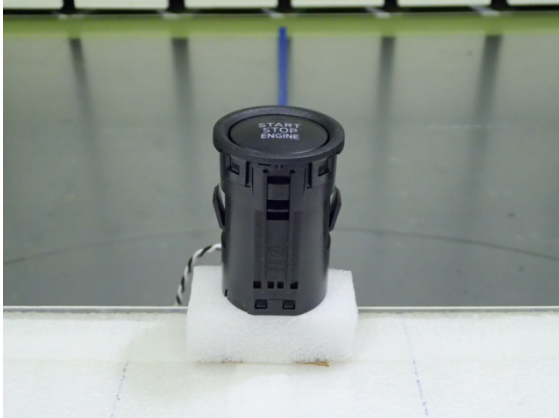
Worst Case Position

Ant
Below30MHz: X-axis
Above30MHz Hori:Z / Vert:X

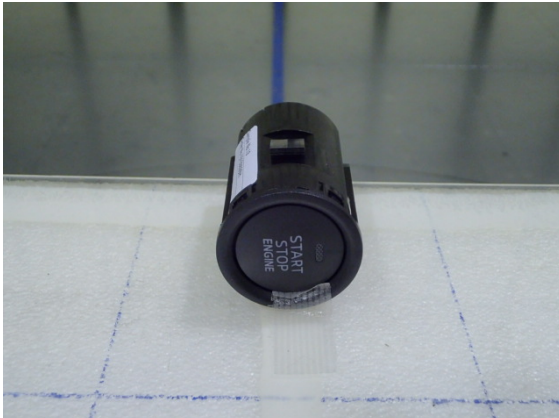
X-axis



Y-axis



Z-axis

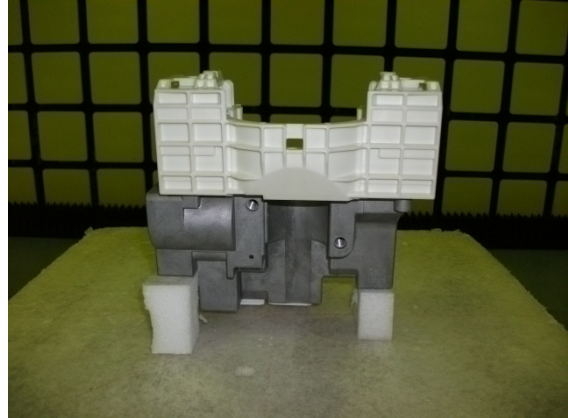


ECU
Below30MHz: X-axis
Above30MHz Hori:X / Vert:X

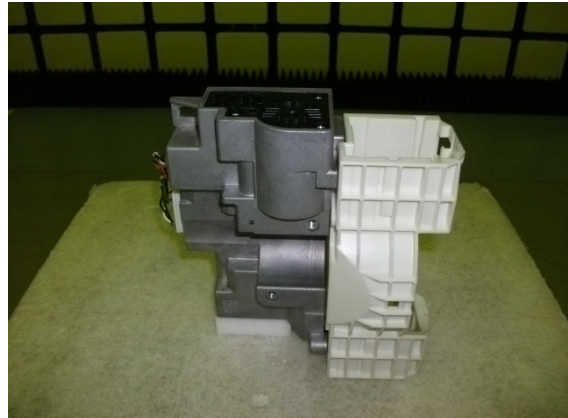
X-axis



Y-axis



Z-axis



UL Japan, Inc.

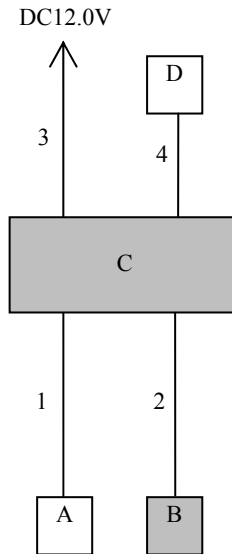
Head Office EMC Lab.

4383-326 Asama-cho, Ise-shi, Mie-ken 516-0021 JAPAN

Telephone : +81 596 24 8999

Facsimile : +81 596 24 8124

4.2 Configuration and peripherals



* Cabling and setup were taken into consideration and test data was taken under worse case conditions.

Description of EUT and Support equipment

No.	Item	Model number	Serial number	Manufacturer	Remarks
A	LF antenna	-	No.20	Mitsubishi Electric Corporation Himeji works	-
B	Antenna coil (Immobilizer)	-	No.16	-	EUT
C	Keyless System SSU	SKE133-02 (Type No.:X1T838)	20131224-S3 (No.12)	Mitsubishi Electric Corporation Himeji works	EUT
D	SW Box 1	-	No.16	Mitsubishi Electric Corporation Himeji works	-

List of cables used

No.	Name	Length (m)	Shield		Remark
			Cable	Connector	
1	Antenna Cable	1.2	Unshielded	Unshielded	-
2	Antenna Cable	1.2	Unshielded	Unshielded	-
3	DC Cable	1.2	Unshielded	Unshielded	-
4	Signal Cable	0.9	Unshielded	Unshielded	-

End of Report

UL Japan, Inc.

Head Office EMC Lab.

4383-326 Asama-cho, Ise-shi, Mie-ken 516-0021 JAPAN

Telephone : +81 596 24 8999

Facsimile : +81 596 24 8124