

APPENDIX 1: Photographs of test setup

Radiated Emission

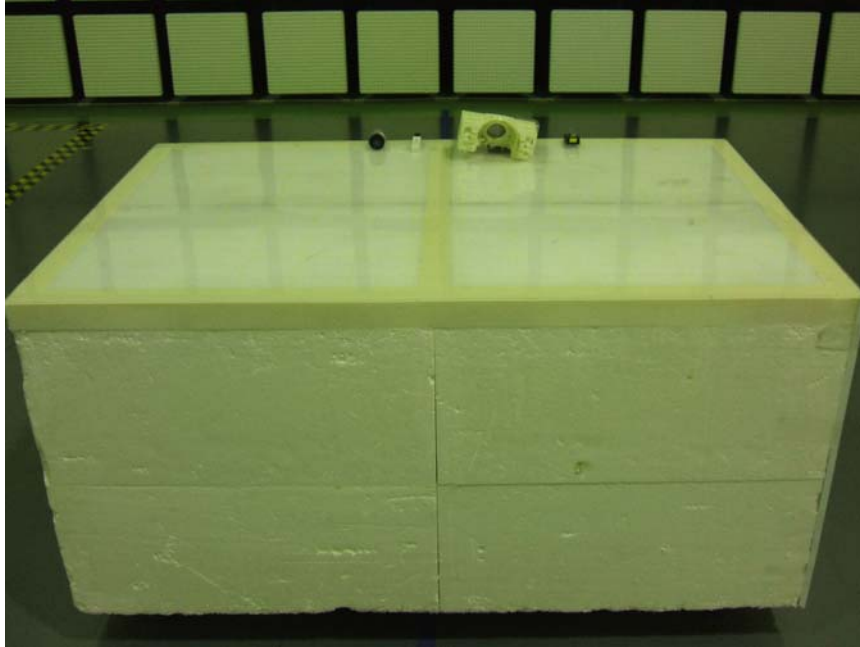


Photo 1

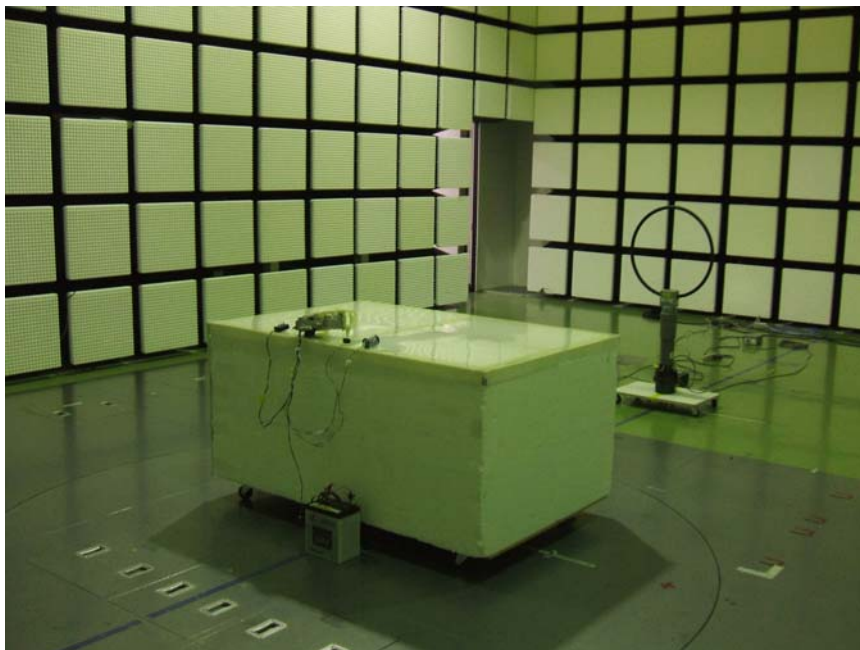


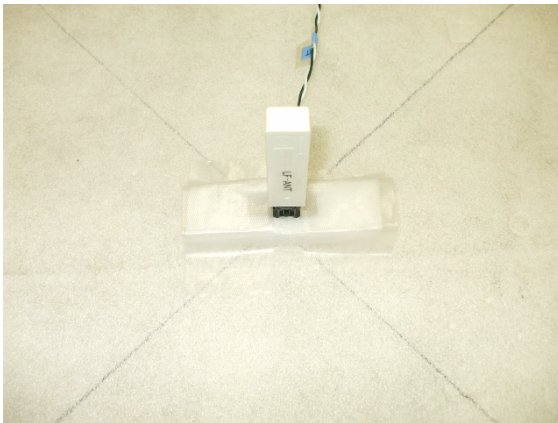
Photo 2

Worst Case Position

Ant
Below30MHz: X-axis
Above30MHz Hori:X / Vert:X
X-axis



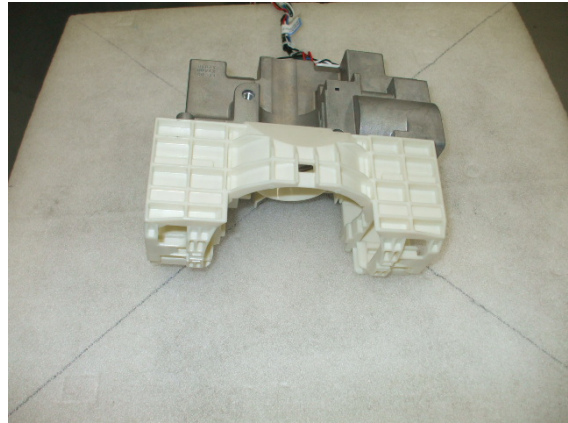
Y-axis



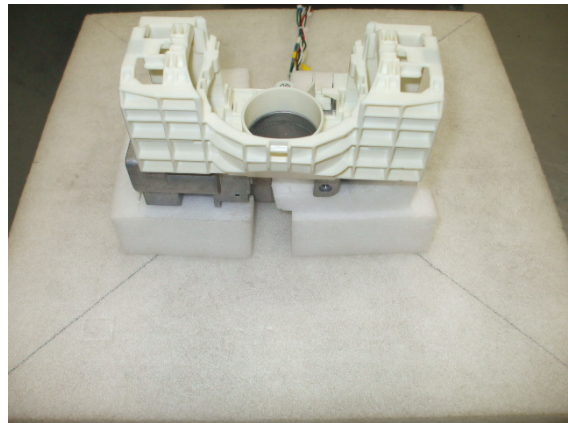
Z-axis



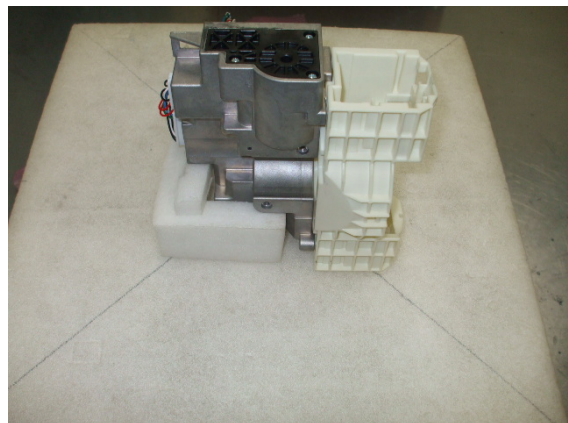
ECU
Below30MHz: X-axis
Above30MHz Hori:Z / Vert:Z
X-axis



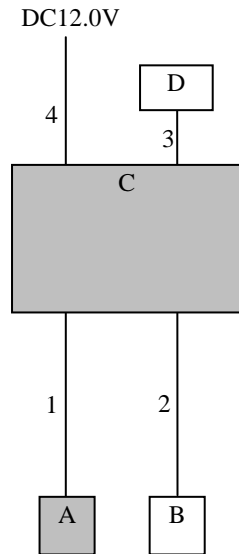
Y-axis



Z-axis



4.2 Configuration and peripherals



* Cabling and setup were taken into consideration and test data was taken under worse case conditions.

Description of EUT and Support equipment

| No. | Item | Model number | Serial number | Manufacturer | Remarks |
|-----|----------------------------|--------------|----------------|--|---------|
| A | LF antenna | - | No.5 (Q101110) | Mitsubishi Electric Corporation Himeji works | EUT |
| B | Antenna coil (Immobilizer) | KD45 663S0 | No.5 (104BB34) | - | - |
| C | Keyless System SSU | SKE133-02 | No.10 | Mitsubishi Electric Corporation Himeji works | EUT |
| D | SW Box 1 | - | No.4 | Mitsubishi Electric Corporation Himeji works | - |

List of cables used

| No. | Name | Length (m) | Shield | | Remark |
|-----|---------------|------------|------------|------------|--------|
| | | | Cable | Connector | |
| 1 | Antenna Cable | 1.2 | Unshielded | Unshielded | - |
| 2 | Antenna Cable | 1.2 | Unshielded | Unshielded | - |
| 3 | Signal Cable | 0.8 | Unshielded | Unshielded | - |
| 4 | DC Cable | 1.1 | Unshielded | Unshielded | - |

UL Japan, Inc.

Head Office EMC Lab.

4383-326 Asama-cho, Ise-shi, Mie-ken 516-0021 JAPAN

Telephone : +81 596 24 8116

Facsimile : +81 596 24 8124