

APPENDIX 3: Photographs of test setup

Radiated Emission

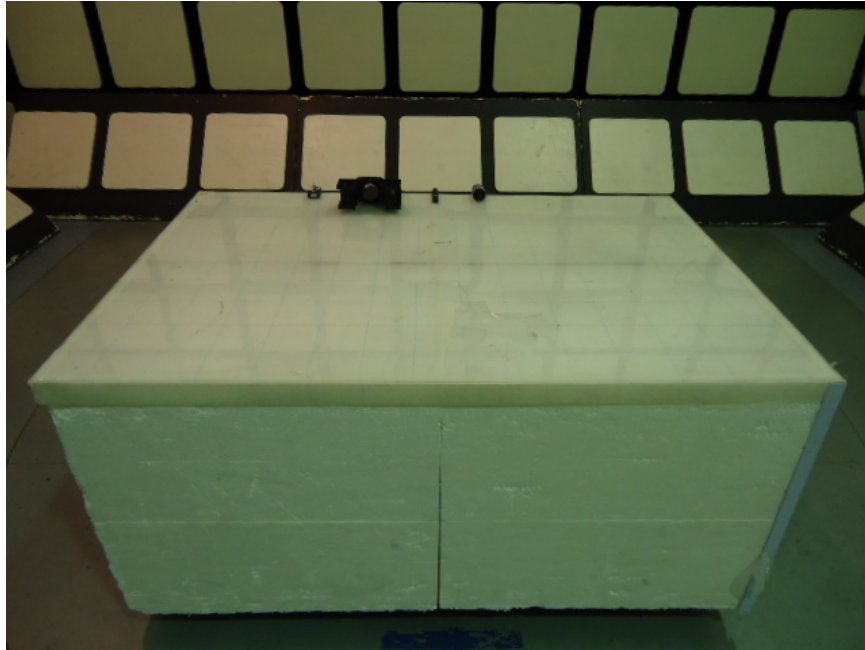


Photo 1

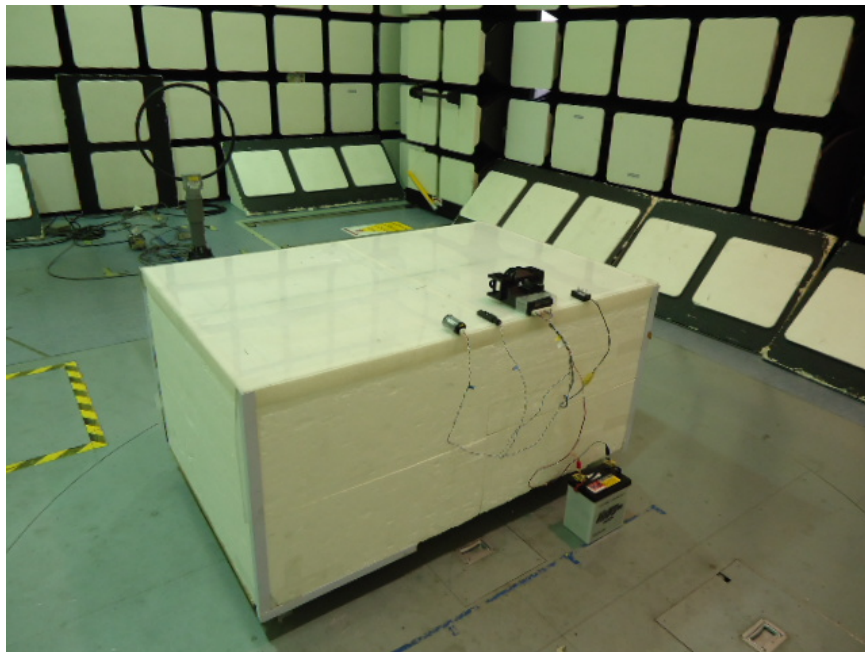


Photo 2

UL Japan, Inc.

Head Office EMC Lab.

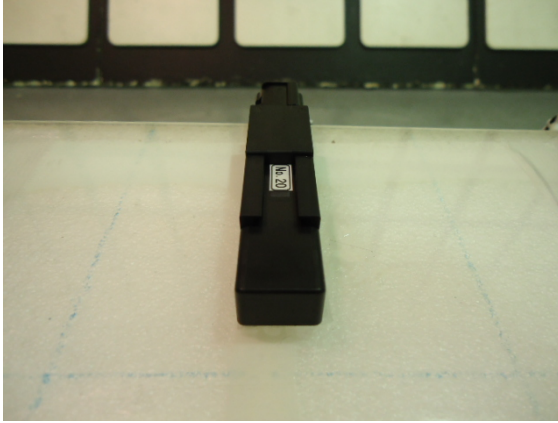
4383-326 Asama-cho, Ise-shi, Mie-ken 516-0021 JAPAN

Telephone : +81 596 24 8999

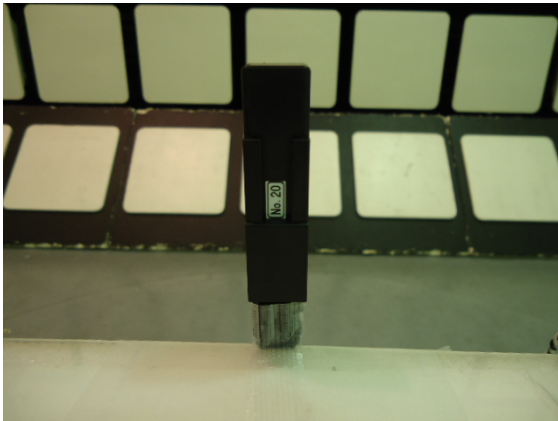
Facsimile : +81 596 24 8124

Worst Case Position

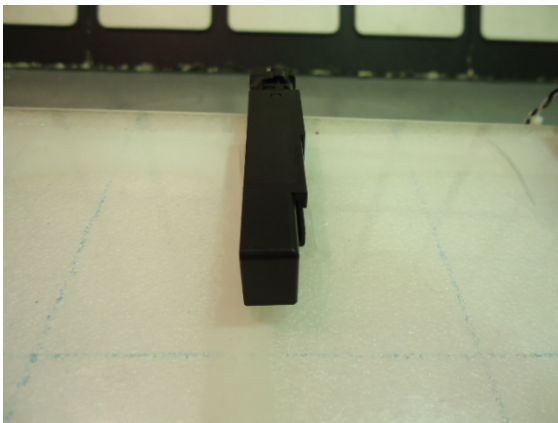
Ant
Below30MHz: X-axis
Above30MHz Hori:X / Vert:X
X-axis



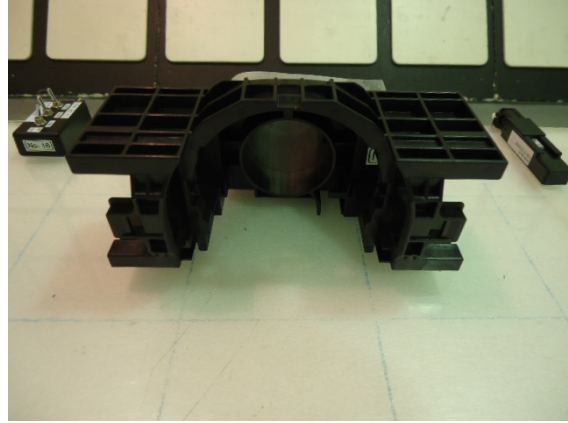
Y-axis



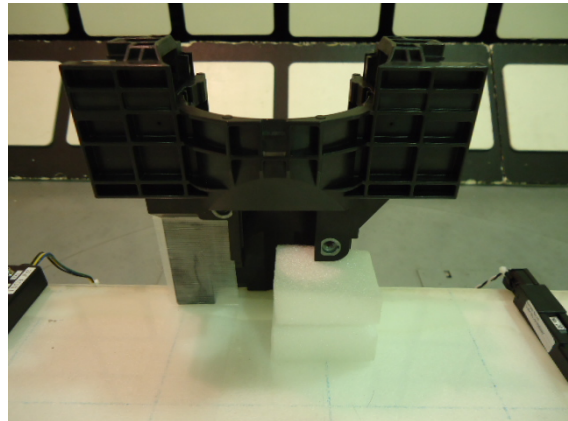
Z-axis



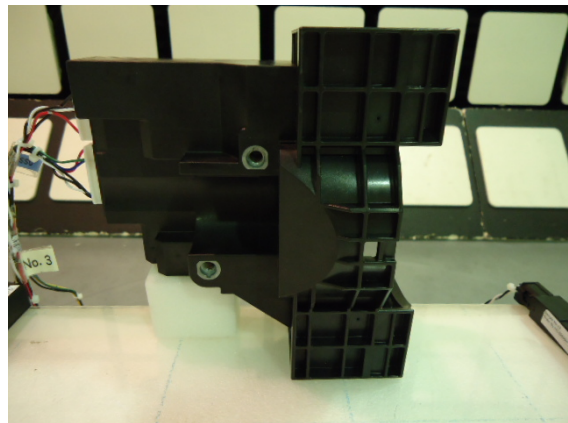
ECU
Below30MHz: X-axis
Above30MHz Hori:Z / Vert:Z
X-axis



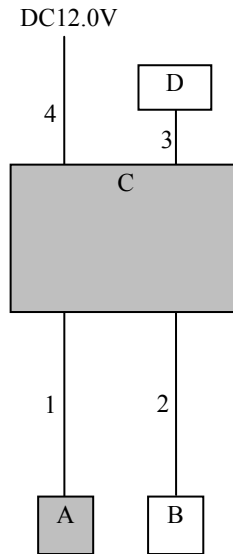
Y-axis



Z-axis



4.2 Configuration and peripherals



* Cabling and setup were taken into consideration and test data was taken under worse case conditions.

Description of EUT and Support equipment

No.	Item	Model number	Serial number	Manufacturer	Remarks
A	LF antenna	-	No.20	Mitsubishi Electric Corporation Himeji works	EUT
B	Antenna coil (Immobilizer)	-	No.16	-	-
C	Keyless System SSU	SKE133-01 (Type No.: X1T839)	20131224-S1 (No.1)	Mitsubishi Electric Corporation Himeji works	EUT
D	SW Box 1	-	No.16	Mitsubishi Electric Corporation Himeji works	-

List of cables used

No.	Name	Length (m)	Shield		Remark
			Cable	Connector	
1	Antenna Cable	1.2	Unshielded	Unshielded	-
2	Antenna Cable	1.2	Unshielded	Unshielded	-
3	Signal Cable	0.9	Unshielded	Unshielded	-
4	DC Cable	1.2	Unshielded	Unshielded	-

End of Report

UL Japan, Inc.

Head Office EMC Lab.

4383-326 Asama-cho, Ise-shi, Mie-ken 516-0021 JAPAN

Telephone : +81 596 24 8999

Facsimile : +81 596 24 8124