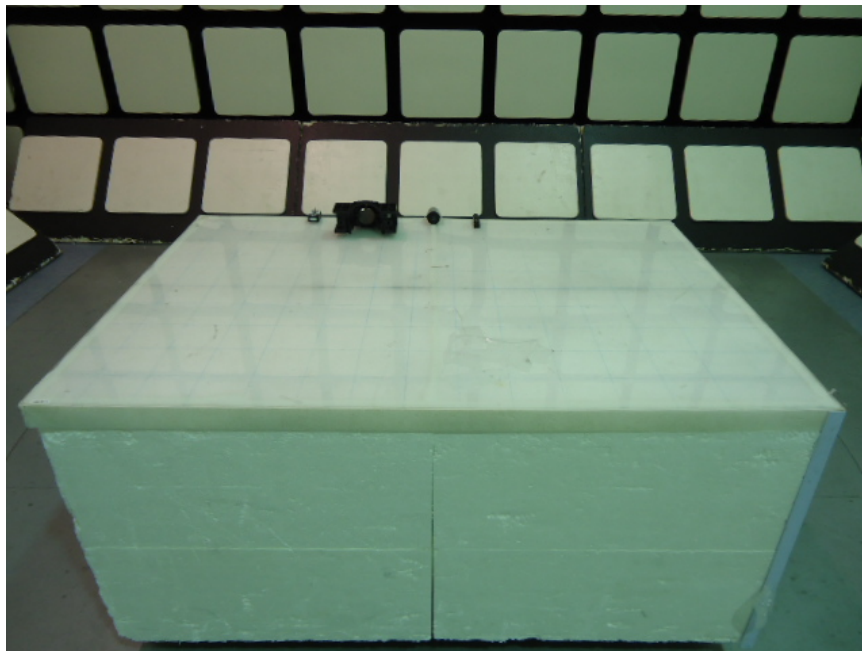
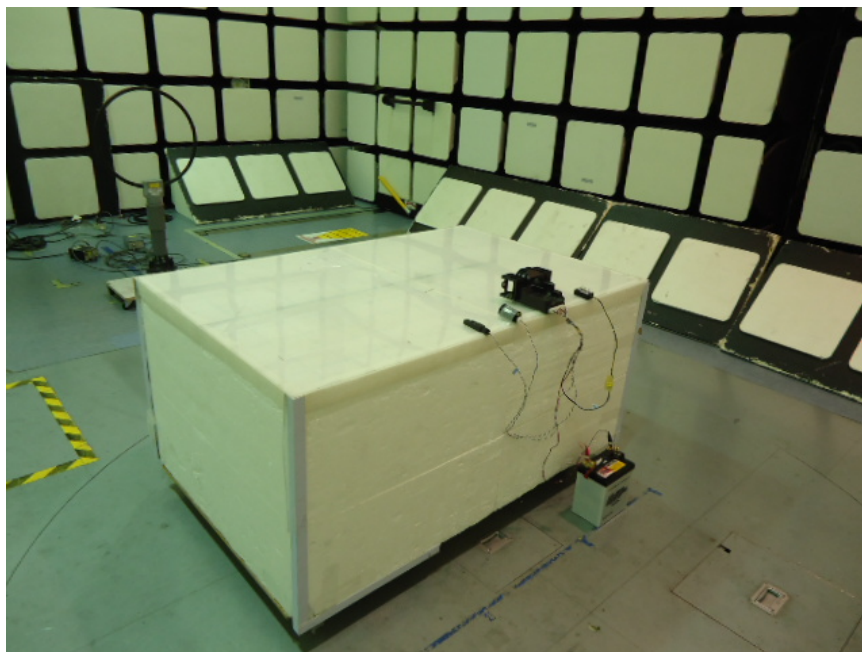


### **APPENDIX 3: Photographs of test setup**

#### **Radiated Emission**



**Photo 1**



**Photo 2**

---

**UL Japan, Inc.**

**Head Office EMC Lab.**

4383-326 Asama-cho, Ise-shi, Mie-ken 516-0021 JAPAN

Telephone : +81 596 24 8999

Facsimile : +81 596 24 8124

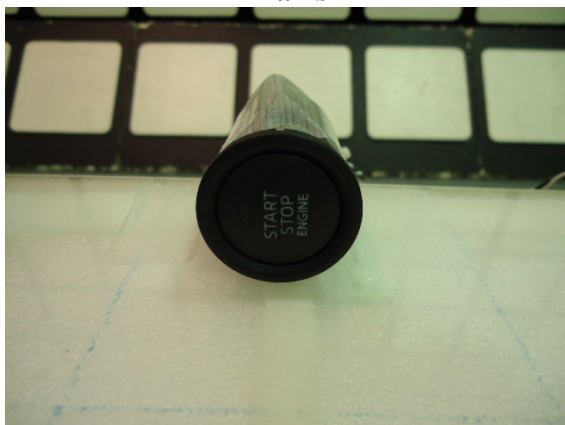
### Worst Case Position

**Ant**  
Below 30MHz: X-axis  
Above 30MHz Hori:Z / Vert:Z

**X-axis**



**Y-axis**

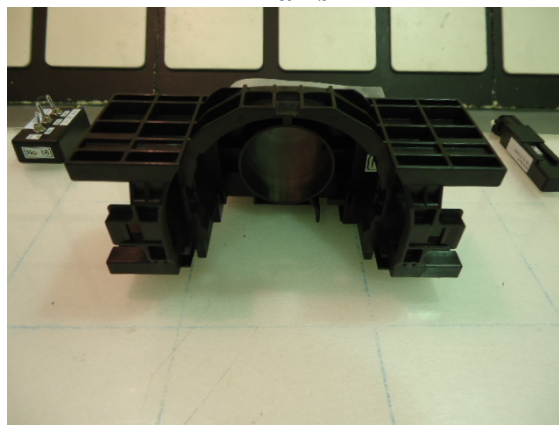


**Z-axis**

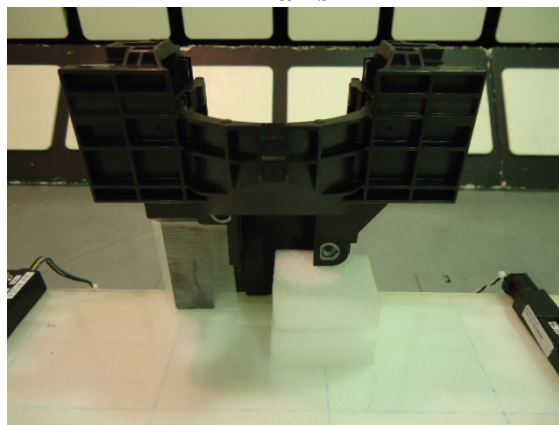


**ECU**  
Below 30MHz: X-axis  
Above 30MHz Hori:X / Vert:X

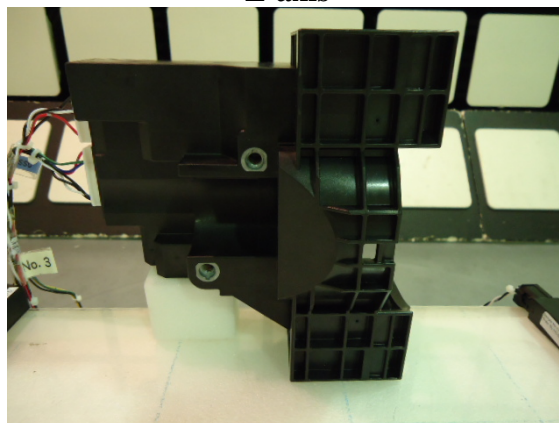
**X-axis**



**Y-axis**



**Z-axis**



**UL Japan, Inc.**

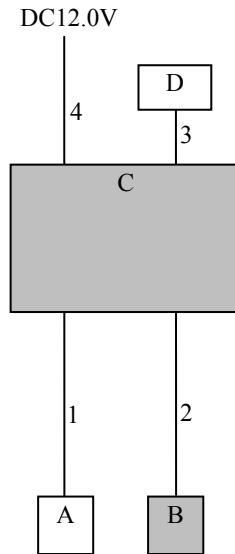
**Head Office EMC Lab.**

4383-326 Asama-cho, Ise-shi, Mie-ken 516-0021 JAPAN

Telephone : +81 596 24 8999

Facsimile : +81 596 24 8124

## 4.2 Configuration and peripherals



\* Cabling and setup were taken into consideration and test data was taken under worse case conditions.

### Description of EUT and Support equipment

No.	Item	Model number	Serial number	Manufacturer	Remarks
A	LF antenna	-	No.20	Mitsubishi Electric Corporation Himeji works	-
B	Antenna coil (Immobilizer)	-	No.16	-	EUT
C	Keyless System SSU	SKE133-01 (Type No.: X1T839)	20131224-S1 (No.1)	Mitsubishi Electric Corporation Himeji works	EUT
D	SW Box 1	-	No.16	Mitsubishi Electric Corporation Himeji works	-

### List of cables used

No.	Name	Length (m)	Shield		Remark
			Cable	Connector	
1	Antenna Cable	1.2	Unshielded	Unshielded	-
2	Antenna Cable	1.2	Unshielded	Unshielded	-
3	Signal Cable	0.9	Unshielded	Unshielded	-
4	DC Cable	1.2	Unshielded	Unshielded	-

**End of Report**

**UL Japan, Inc.**

**Head Office EMC Lab.**

4383-326 Asama-cho, Ise-shi, Mie-ken 516-0021 JAPAN

Telephone : +81 596 24 8999

Facsimile : +81 596 24 8124