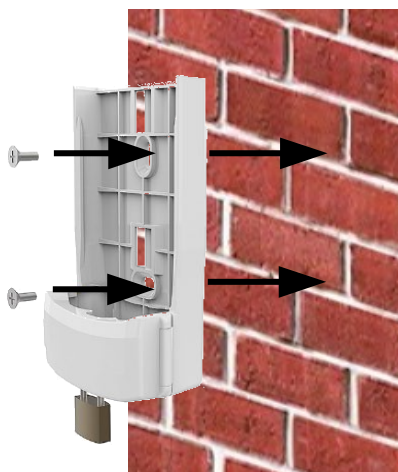


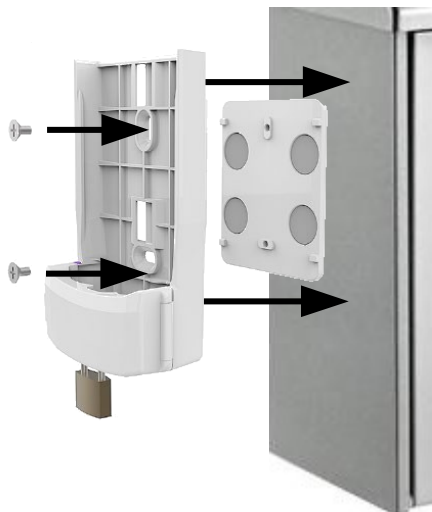
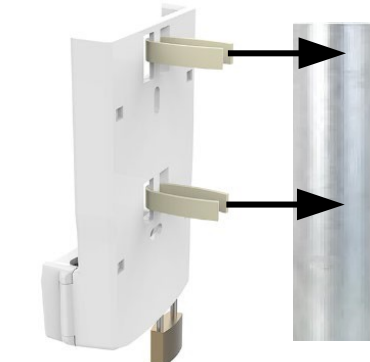
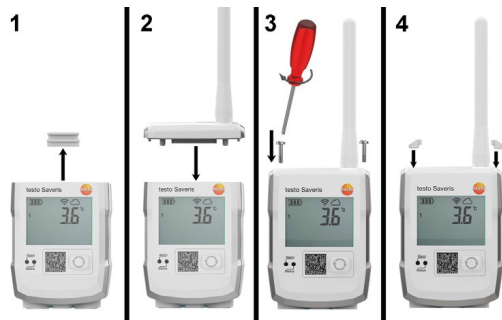


www.testo.com

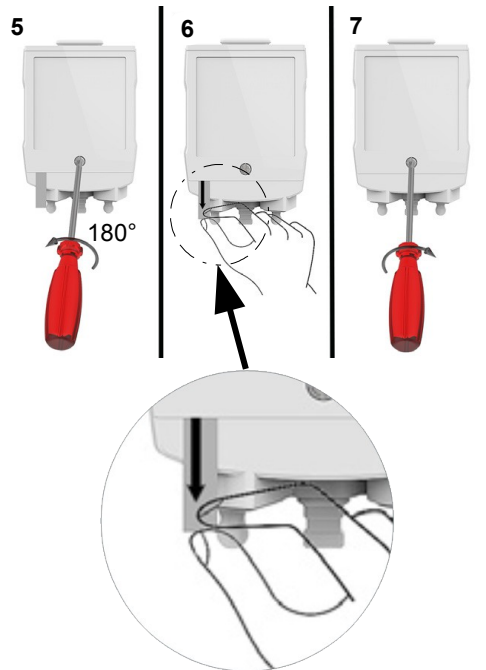
10



11



12



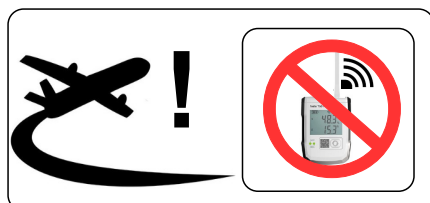
8



9



	0572 3350 1 x 256.000	69 x 80 x 29	80mm	180g	4xAA AlMn Mignon 2,5 - 5 year	IP 67 (UltraRange/ WLAN)
	0572 3330 4 x 64.000				T < -10 °C 0515 0572	IP 42 (LAN / POE)
	0572 3340 2 x 128.000					
	0572 3320 4 x 16.000				0554 1106	
						-40°C...+50°C
						-40°C...+50°C
						PC / PET
						ABS+PC +10%GF



Approval and Certification

Product	testo 150 TUC4 testo 150 TC4 testo 150 DIN2
Mat.-No.	0572 3320 0572 3330 0572 3340
Model No.	0572 3320 0572 3330 0572 3340
Date	06.11.2019

i The use of the wireless module is subject to the regulations and stipulations of the respective country of use, and the module may only be used in countries for which a country certification has been granted. The user and every owner has the obligation to adhere to these regulations and prerequisites for use, and acknowledges that the re-sale, export, import etc. in particular in countries without wireless permits, is his responsibility.

Country	Comments
Australia	 E 1561
Europa + EFTA	  The EU Declaration of Conformity can be found on the testo homepage www.testo.com under the product specific downloads. EU countries: Belgium (BE), Bulgaria (BG), Denmark (DK), Germany (DE), Estonia (EE), Finland (FI), France (FR), Greece (GR), Ireland (IE), Italy (IT), Latvia (LV), Lithuania (LT), Luxembourg (LU), Malta (MT), Netherlands (NL), Austria (AT), Poland (PL), Portugal (PT), Romania (RO), Sweden (SE), Slovakia (SK), Slovenia (SI), Spain (ES), Czech Republic (CZ), Hungary (HU), United Kingdom (GB), Republic of Cyprus (CY). EFTA countries: Iceland, Liechtenstein, Norway, Switzerland  WEEE Reg. no. DE 75334352
Hongkong	Authorized
Turkey	Authorized
USA	 FCC Warnings
EN 12830	Acc. to EN 12830 -S,A,C,D,0.5, Ia -30...+50°C

FCC Warnings

Information from the FCC (Federal Communications Commission)

For your own safety

Shielded cables should be used for a composite interface. This is to ensure continued protection against radio frequency interference.

FCC warning statement

This equipment has been tested and found to comply with the limits for a Class C digital device, pursuant to Part 15 of the FCC Rules. These limits are designed to provide reasonable protection against harmful interference in a residential installation. This equipment generates, uses and can radiate radio frequency energy and, if not installed and used in accordance with the instructions, may cause harmful interference to radio communications. However, there is no guarantee that interference will not occur in a particular installation. If this equipment does cause harmful interference to radio or television reception, which can be determined by turning the equipment off and on, the user is encouraged to try to correct the interference by one or more of the following measures:

- Reorient or relocate the receiving antenna.
- Increase the separation between the equipment and receiver.
- Connect the equipment into an outlet on a circuit different from that to which the receiver is connected.
- Consult the dealer or an experienced radio/TV technician for help.

Caution

Changes or modifications not expressly approved by the party responsible for compliance could void the user's authority to operate the equipment. Shielded interface cable must be used in order to comply with the emission limits.

Warning

This device complies with Part 15 of the FCC Rules. Operation is subject to the following two conditions:
 (1) this device may not cause harmful interference, and
 (2) this device must accept any interference received, including interference that may cause undesired operation.



Testo - Information

Safety

Environment

Cleaning

Storage






Contents

1	About this document.....	5
2	General safety instructions.....	6
3	Disposal.....	8
4	Batteries, rechargeable batteries and button cells.....	8
5	Cleaning	10
6	Products with wireless technology	10
7	Storage.....	11
8	Approvals	11
9	EU declaration of conformity.....	11

1 About this document

- The **Testo Information** document is an integral part of the product.
- Read this document through carefully to prevent injuries and damage to the product. Familiarize yourself with the product before using it.
- Keep this documentation to hand so that you can refer to it when necessary.
- Hand this documentation on to any subsequent users of the product.

Symbols and writing standards

Representation	Explanation
	Note: basic or further information
1 2 ...	Action: several steps, the sequence must be followed.
	Result of an action
	Requirement

Warning notices

Always pay attention to any information marked with the following warning notices along with warning pictograms. Implement the specified precautionary measures!

 **DANGER**

Risk of death!

 **WARNING**

Indicates possible serious injury.

 **CAUTION**

Indicates possible minor injury.

CAUTION

Indicates possible damage to equipment.

2 General safety instructions



You will find product-specific safety instructions, approvals and technical data in the accompanying documentation or on the Testo website, www.testo.com, under the product-specific download.

- Only operate the product properly, for its intended purpose, and within the parameters specified in the technical data.
- Do not apply any force.
- Do not operate the product if there are signs of damage on the housing, mains unit or connected cables.
- Only use the product in closed, dry rooms and protect it from rain and moisture.
- The product must be checked for any visible damage before commissioning.
- Dangers may also arise from objects to be measured or the measuring environment. Always comply with the locally valid safety regulations when carrying out measurements.
- Only perform maintenance and repair work on this instrument that is described in this documentation. Follow the prescribed steps exactly when doing the work.
- Any additional work must only be carried out by authorized, qualified personnel. Otherwise, Testo will refuse to accept responsibility for the proper functioning of the product after repair and for the validity of approvals.
- Maintenance work that is not described in this documentation must only be carried out by trained service engineers.
- Safety instructions for patients with an implanted cardiac pacemaker when using Testo products with magnets
 - Handle instruments or accessories containing a magnet with care and keep them in a safe place.
 - Maintain a distance of 20 cm between your implant and the magnet which is incorporated into the instrument or accessories.
- Keep a safe distance from products which could be damaged by the effects of magnetism (e.g. monitors, computers, pacemakers or credit cards).
- Use only original spare parts from Testo.

- Temperature information given on probes/sensors relates only to the measuring range of the sensor technology. Do not expose handles and supply lines to temperatures above 45°C (113°F), unless they are explicitly approved for higher temperatures.

WARNING

Risk of burns due to hot probes, probe shafts and sensor tips!

▶ Do not get hold of hot parts (> 45°C/113°F) with bare hands immediately after a measurement.

- In the event of burns, immediately cool the relevant spot with cold water and consult a doctor if necessary.


Allow probes, probe shafts and sensor tips to cool down.

- The product must not be used in potentially explosive atmospheres, if it is not explicitly approved for these areas.
- Do not carry out any contact measurements on uninsulated, live parts.
- Do not expose the product to any extremely high or low temperatures. Avoid temperatures below -5°C or above 45°C. The exception is when a product has been explicitly approved for other temperatures.
- Protect the product from dust and dirt. Make sure that it is not exposed to an environment with dust, dirt, sand, etc.
- Prevent the product from falling.
- If operator safety can no longer be guaranteed, the product is to be taken out of service and secured against inadvertent use. This is the case if the product:
 - is obviously damaged
 - has fractures on the housing
 - has faulty measuring cables
 - has leaking batteries
 - no longer performs the required measurements
 - has been stored for too long in unfavourable conditions
 - has been exposed to mechanical stresses in transit

3 Disposal

- Dispose of faulty energy storage units in accordance with the valid legal specifications.
- At the end of its useful life, deliver the product to the separate collection point for electric and electronic devices (observe local regulations) or return the product to Testo for disposal.



-  WEEE Reg. no. DE 75334352
- Any button cells that may be used in a Testo product contain 1,2-Dimethoxyethane (CAS 110-71-4). In this connection, see EU Regulation no. 1907/2006 (REACH) Art. 33.

4 Batteries, rechargeable batteries and button cells

- Improper use of batteries may cause destruction of the batteries, injuries due to current surges, fire or the escape of chemicals.
- Only use the batteries supplied in accordance with the instructions in the instruction manual.
- Do not charge batteries where there is a non-rechargeable battery system. Attempting to charge a non-rechargeable battery may cause gas to be produced or heat to be generated. That may lead to the escape of gases, an explosion and/or possibly to fire.
- With rechargeable batteries, never use chargers which are not suitable for the battery type. Suitable chargers for Testo products are to be found in the list of accessories.
- Do not short batteries. If the positive (+) and negative (-) terminals of a battery are directly connected to one another, the battery will be shorted. For example, batteries can be shorted when you have them loose in your pocket along with keys or coins. This may lead to the escape of gases and the leakage of battery acid.
- With rechargeable batteries, never use chargers which are not suitable for the battery type. Suitable chargers for Testo products are to be found in the list of accessories.

- Do not deform batteries. Batteries must not be squashed, drilled, dismantled, pierced, modified or damaged in any other way. This may lead to the leakage of battery acid, to the escape of gases and/or to an explosion.
- Do not heat batteries above the permitted temperature or burn them. If a battery is heated, this may lead to the leakage of battery acid and/or to an explosion. Lithium batteries can for instance react very strongly in combination with fire. This may involve battery components being emitted with considerable power.
- Do not consume battery, risk of burns due to hazardous substances. Keep new and used batteries away from children.
- If the battery compartment will not close securely, do not continue to use the product and keep away from children.
- In principle, contact with escaping battery components may present a risk to health and to the environment. Adequate body and breathing protection is therefore required when in contact with batteries that have peculiar aspects (escaping contents, deformations, discolourations, dents or the like).
- Do not reverse the polarities of batteries, always adhere to the + and - signs on battery and instrument. If batteries are inserted the wrong way round, they can quickly overheat. This may lead to the escape of gases, the leakage of battery acid and/or to an explosion.
- When changing batteries, replace them all at the same time and make sure you use new batteries of the same make and type. If different sorts of battery, or new and old batteries, are used together, some batteries may be overloaded due to different voltages or capacities. This may lead to the escape of gases and/or to an explosion.
- Do not leave batteries lying around loose once they have been unpacked. If batteries that have been unpacked are left lying around loose, they can easily short one another, particularly button cells. In some cases, this is very dangerous because the batteries may heat up. This may lead to an explosion.
- Always store batteries in a cool, dry place.
- Batteries must be disposed of in accordance with the local and country-specific regulations. In order to prevent short circuits and the associated heating, lithium batteries must never be stored unprotected in bulk. Appropriate measures against short circuits are for instance inserting the batteries into the original packaging or a plastic bag, masking the poles or embedding them in dry sand.

- Lithium batteries must be transported and shipped in accordance with the local and country-specific regulations.
- If there is any contact with the skin or eyes, the areas must be rinsed with water for at least 15 minutes. If there is any contact with the eyes, a doctor must be contacted in addition to the rinsing.
- If burns are caused, these must be treated appropriately. You are also strongly advised to contact a doctor.
- Airways: Leave the room immediately when smoke development or gas release is acute. Consult a doctor when amounts are larger and airways are irritated.
- Swallowing: Rinse out mouth and surrounding area with water. Get medical assistance immediately.

5 Cleaning

- Clean the product with a dry, soft cloth. Do not use any alcohol, aggressive cleaning agents and solvents or other washing liquids to clean the product.
- Do not use any desiccants.
- Use distilled water, or alternatively mild solvents or degreasers.
- Store solvents and degreasers separately from the product, because leaking solvents and degreasers may cause damage to the product.
- The use of strong or harsh alcohol or brake cleaner may result in damage to the product.

6 Products with wireless technology

Changes or modifications that have been made without the explicit consent of the competent approval authority may lead to cancellation of the type approval.

Data transfer may be disturbed by equipment that uses the same ISM band.

Places where the use of radio communication links is not permitted include aeroplanes and hospitals. For this reason, the following points must be ensured before entering:

- Switch the instrument off.
- Disconnect the instrument from any external power sources (mains cable, external energy storage units, etc.).

7 Storage

- Keep the product away from any liquids and do not put it into water. Protect it from rain and humidity.
- Do not store the product together with solvents.

8 Approvals

Please find the current country approvals in the attached document. Please note the following country-specific information for the product authorization.



The use of the wireless module is subject to the regulations and stipulations of the respective country of use and the module may only be used in countries for which a national certification has been granted. The user and every owner has the obligation to adhere to these regulations and prerequisites for use and acknowledges that the re-sale, export, import, etc., in particular in, to or from countries without wireless authorization, is their responsibility.

9 EU declaration of conformity

You can find the EU declaration of conformity on the Testo website, www.testo.com, under the product-specific downloads.



Testo SE & Co. KGaA

Testo-Strasse 1

D-79853 Lenzkirch

Germany

Phone: +49 7653 681-0

Fax: +49 7653 681-7699

E-mail: info@testo.de

www.testo.de