

Report Number:EED32K00112105

Appendix A:SAR System performance Check Plots
Table of contents
System Performance Check-D2450

Test Laboratory: CTI SAR Lab

Systemcheck 2450-Head**DUT: Dipole 2450 MHz D2450V2; Type: D2450V2; Serial: D2450V2 - SN:959**

Communication System: UID 0, CW (0); Communication System Band: D2450 (2450.0 MHz); Frequency: 2450 MHz; Duty Cycle: 1:1

Medium parameters used: $f = 2450$ MHz; $\sigma = 1.849$ S/m; $\epsilon_r = 39.261$; $\rho = 1000$ kg/m³

Phantom section: Flat Section

DASY Configuration:

- Probe: EX3DV4 - SN7328; ConvF(7.49, 7.49, 7.49); Calibrated: 2/23/2018;
- Sensor-Surface: 2mm (Mechanical Surface Detection), $z = 1.0, 31.0$
- Electronics: DAE4 Sn914; Calibrated: 12/19/2017
- Phantom: Twin SAM V5.0; Type: QD000P40CD; Serial: 1875
- DASY52 52.8.8(1222); SEMCAD X 14.6.10(7331)

Configuration/d=10mm, Pin=250 mW/Area Scan (8x8x1): Measurement grid: $dx=15$ mm, $dy=15$ mm

Maximum value of SAR (measured) = 12.5 W/kg

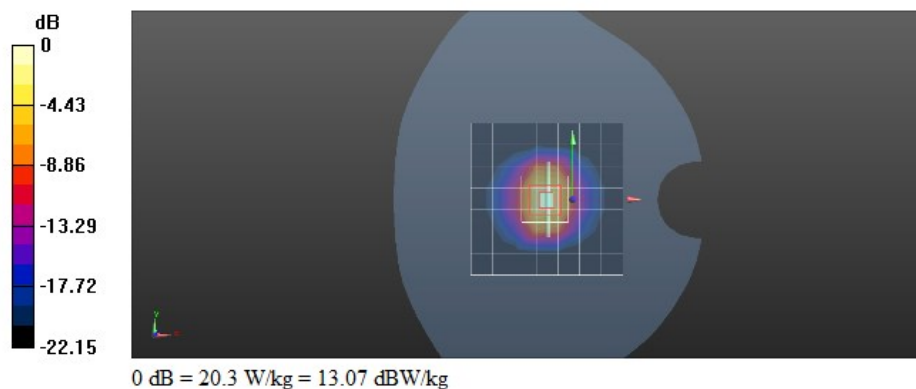
Configuration/d=10mm, Pin=250 mW/Zoom Scan (5x5x7)/Cube 0: Measurement grid: $dx=8$ mm, $dy=8$ mm, $dz=5$ mm

Reference Value = 104.9 V/m; Power Drift = 0.12 dB

Peak SAR (extrapolated) = 27.1 W/kg

SAR(1 g) = 13.2 W/kg; SAR(10 g) = 6.14 W/kg

Maximum value of SAR (measured) = 20.3 W/kg



Test Laboratory: CTI SAR Lab

Systemcheck 2450-Body**DUT: D2450V2 - SN959; Type: D2450V2; Serial: SN959**

Communication System: UID 0, CW (0); Communication System Band: D2450 (2450.0 MHz); Frequency: 2450 MHz; Duty Cycle: 1:1

Medium parameters used: $f = 2450$ MHz; $\sigma = 1.928$ S/m; $\epsilon_r = 53.722$; $\rho = 1000$ kg/m³

Phantom section: Flat Section

DASY Configuration:

- Probe: EX3DV4 - SN7328; ConvF(7.69, 7.69, 7.69); Calibrated: 2/23/2018;
- Sensor-Surface: 2mm (Mechanical Surface Detection), $z = 1.0, 31.0$
- Electronics: DAE4 Sn914; Calibrated: 12/19/2017
- Phantom: Twin SAM V5.0; Type: QD000P40CD; Serial: 1875
- DASY52 52.8.8(1222); SEMCAD X 14.6.10(7331)

Configuration/d=10mm,Pin=250mW/Area Scan (10x10x1): Measurement grid: $dx=12$ mm, $dy=12$ mm

Maximum value of SAR (measured) = 15.6 W/kg

Configuration/d=10mm,Pin=250mW/Zoom Scan (7x7x7)/Cube 0: Measurement grid: $dx=5$ mm, $dy=5$ mm, $dz=5$ mm

Reference Value = 86.58 V/m; Power Drift = -0.08 dB

Peak SAR (extrapolated) = 24.8 W/kg

SAR(1 g) = 12.4 W/kg; SAR(10 g) = 5.82 W/kg

Maximum value of SAR (measured) = 18.8 W/kg

