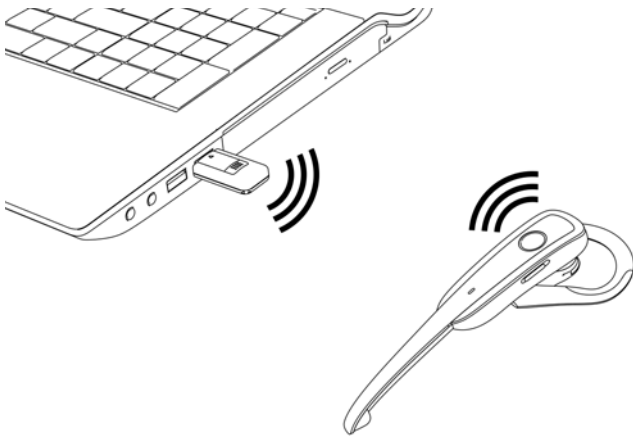


# BTE038+BTT004B

## User's manual

# Contents

- **Brief introduction**.....1
- **Before use**.....1
  - 1. **Overview**.....1
  - 2. **Charging**.....2
- **Getting started**.....3
  - 1. **Wearing the headset** .....3
  - 2. **Turning on/off**.....3
  - 3. **Pairing/connecting**.....4
  - 4. **Listening music/making a call**.....5
  - 5. **Switch between music and conversation mode**.....7
- 6. **LED indicator**.....8
- 7. **Factory Reset of BTE038**.....8
- **Care and maintenance**.....8
- **FAQs**.....9
- **Specification**.....10
- **FCC Statement**.....10



Welcome to use this product. Please read this user's manual carefully before use.

### ■ Brief introduction

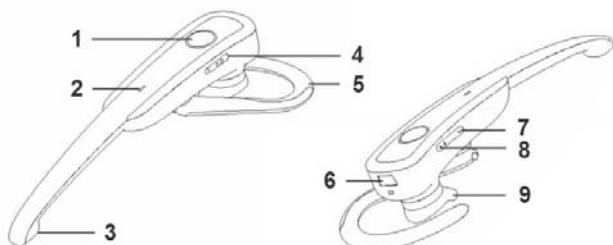
BTE038 is a Bluetooth headset for making HD call. BTT004B is a USB Dongle without driver. Connect BTT004B into the USB jack of computer, it can transmit the music and call to BTE038 via Bluetooth, functions as following:

1. Make VoIP call via Skype, Google Talk and other common internet communication software
2. Listen music from computer

### ■ Before use

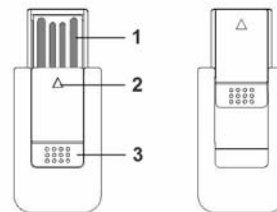
#### 1. Overview

##### BTE038



1	MFB button	6	Mini USB charging jack
2	LED indicator	7	Volume down
3	Microphone	8	Volume up
4	Switch	9	Speaker
5	Rotatable ear hook		

##### BTT004B



1	USB connector
2	LED indicator
3	Slide cover

#### 2. Charging

BTE038 comes with a built-in rechargeable battery, prior to using it, it is recommended to charge the battery fully for the first time. When the headset is low power, the red LED of headset will flashes. Please recharge the battery of the headset.

The way of charging as following:

##### Using USB cable

1. Plug the side of cable to the USB port of PC
2. Plug another side of cable into the Mini USB charging jack of headset
  - Red light on: Charging
  - Red light off: Finish charging
3. It will takes about 2 hours to finish charging



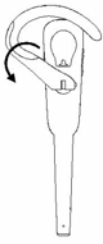
##### Remarks:

- 1) The battery is recyclable.
- 2) Batteries (battery pack or batteries installed) shall not be exposed to excessive heat place, such as sunshine, fire or the like.

■ Getting started

1. Wearing the headset

a. Rotate the ear hook as following shown to get better wearing.



For right ear



For left ear

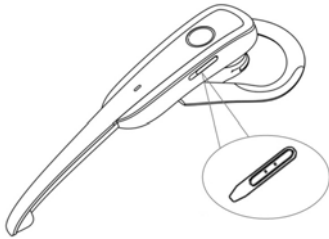
b. After putting on the headset, align the microphone towards the user's mouth to get the best conversation quality.

2. Turning on/off

BTE038

Turning on: put the switch to the upside, blue LED will on.

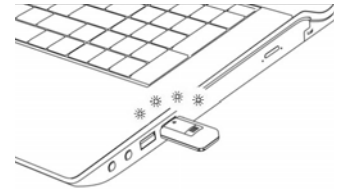
Turning off: put the switch to the downside, red LED will on.



BTT004B

Turning on: open the slide cover and plug it into the USB jack of PC, blue LED flash quickly, it will turn on automatically.

Turning off: pull it out from the PC.



3. Pairing/connecting

Please pair and connect BTE038 and BTT004B, you can make a call and listen music, pairing steps as follows:

- 1) Turn on the BTE038 and long press MFB button about 3 seconds to enter into pairing mode(blue and red LED of BTE038 flash alternately);
- 2) Plug BTT004B into USB jack of PC, blue LED flash twice every 3 seconds and it enter pairing mode;
- 3) BTT004B and BTE038 will pair and connect with each other, after connect successfully, blue LED of BTE038 will flash twice every 4 seconds, blue LED of BTT004B will on.

Remarks:

- ◆ Please do not long press MFB button to enter pairing mode until you see the blue LED on when you turn on the BTE038.
- ◆ The pairing mode of BTE038 will last 2 minutes, the headset will back to standby mode if it can not pair with BTT004B over 2 minutes.
- ◆ The pairing mode of BTT004B will last 30 seconds, if fail to pair, please plug BTT004B again.
- ◆ After paired, BTE038 and BTT004B will remember each other, it will connect with each other automatically next time.
- ◆ When BTE038 is turned off or over available range, BTT004B will enter sleeping mode and LED off. When BTE038 is turned on or back to available range, it will connect with BTT004B automatically, LED of BTT004B is on.

4. Listening music/making a call

1) Setting up system

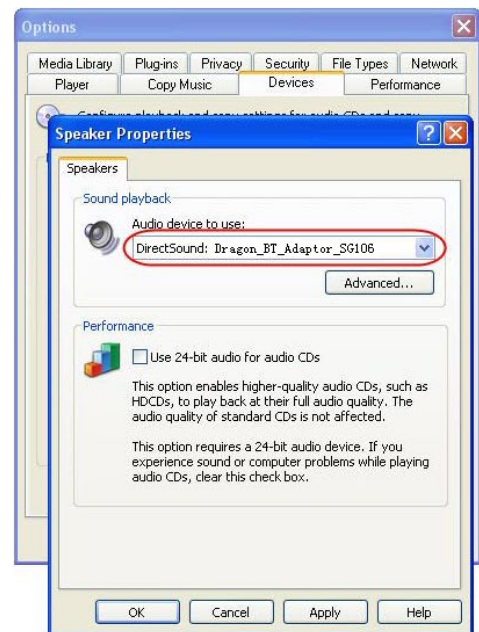
Before use, please set up the default audio device in Sounds and Audio Devices Properties as this dngle, follows take Windows XP for example:



2) Listening music

a. After BTE038 connect with BTT004B, blue LED of BTT004B will on, and enter music mode, you can listen music now.

b. Set up default device as this dngle on your Media player, follows take Windows Media Player for example:

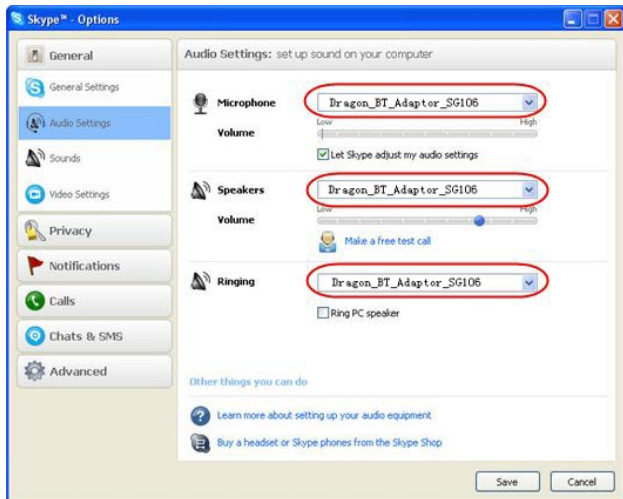


c. Short or long press volume up/down button on BTE038 to adjust volume.

**3) Making a call**

a. Short press MFB button on BTE038, blue LED of BTT004B flash slowly and enter conversation mode, you can make a VoIP call now.

b. BTT004B support Skype, Google Talk and other common internet communication software. Please set up audio device as this dongle on the communication software, follows take Skype for example:



c. Short or long press volume up/down button on BTE038 to adjust volume.

**5. Switch between music and conversation mode**

Short press MFB button on BTE038 to switch music and conversation mode.

- ◆ Keep the product away from direct sunlight or hot places. High temperatures will shorten the life of electronic devices, destroy the battery or distort certain plastic parts.
- ◆ Don't expose the product to cold areas. It may damage the internal circuit board.
- ◆ Don't try to disassemble the product as it may get damaged if you are not professional.
- ◆ Don't let it fall down onto the floor or other hard surfaces. The internal circuit might get damaged.
- ◆ Don't use intensive chemical products or detergent to clean the product.
- ◆ Don't scratch the surface with sharp things.
- ◆ Don't use this product during strenuous exercise. It may get damaged by sweat.

In case the product doesn't function properly, send it to the store you bought it. The staff will help you to solve the problem

**■ FAQs**

**1. Why is the red LED off when charging?**

- a) Please make sure the charging device connect with headset well;
- b) The battery may dry up. Please charge the battery for 30 minutes, and then the red LED will be ON.

**2. Why can't I hear the sound on the headset when making a VoIP call?**

- a) Make sure Dongle is under conversation mode (blue LED of dongle will flashes slowly);
- b) Make sure you had set up the audio device correctly.

**3. Why can't I hear the sound clearly on the headset?**

- a) Make sure the internet on your computer is available;
- b) Make sure the headset is in the available range and no obstacle between headset and dongle..

**6. LED indicator**

BTE038	
LED indicator	Status of headset
Red and blue LED flashes alternately	Pairing mode
Blue LED flashes once every 2 seconds	Not connected to device
Blue LED flashes twice every 4 seconds	Connected to device
Red LED flashes instead of blue LED	Low battery
BTT004B	
LED indicator	Status of headset
Blue LED flashes quickly	Standby to connect last connected device
Blue LED flash twice every 3 seconds	Search new device to pair
Blue LED on	Music mode
Blue LED flashes slowly	Conversation mode
No LED indicator	Sleeping mode, available connected

**7. Factory Reset of BTE038**

In the status of turning on and not connected with device, press MFB and volume down button about 4 seconds and release it until the red and blue LED on simultaneously.

**Remarks:**

After factory reset, the paired list of headset will be deleted. After turn it on again, the headset will enter pairing mode automatically, and you need to re-pair and connect with Bluetooth devices.

**■ Care and maintenance**

Read the following recommendations carefully before using this product. Following these you will be able to enjoy this product for many years.

- ◆ Keep it dry and don't put it in the dump place to avoid the product's internal circuit being affected.

**■ Specifications**

<b>Bluetooth version</b>	Headset: Bluetooth V3.0 Dongle: Bluetooth V2.1+EDR
<b>Bluetooth profiles</b>	Headset, Hands free, A2DP, AVRCP
<b>Operating distance</b>	10meters
<b>Headset music time</b>	About 9 hours
<b>Headset talk time</b>	About 10 hours
<b>Headset standby time</b>	About 200 hours
<b>Headset charging time</b>	About 2 hours

**Notes:**

1. This device complies with Part 15 of the FCC Rules. Operation is subject to the following two conditions: (1) this device may not cause harmful interference, and (2) this device must accept any interference received, including interference that may cause undesired operation.
2. Changes or modifications not expressly approved by the party responsible for compliance could void the user's authority to operate the equipment.

**■ FCC Statement**

Any Changes or modifications not expressly approved by the party responsible for compliance could void the user's authority to operate the equipment.

This device complies with part 15 of the FCC Rules. Operation is subject to the following two conditions: (1) This device may not cause harmful interference, and (2) this device must accept any interference received, including interference that may cause undesired operation.

**Radiation Exposure Statement:**

This equipment complies with FCC radiation exposure limits set forth for an uncontrolled environment. This equipment should be installed and operated with minimum distance 20cm between the radiator& your body.

This transmitter must not be co-located or operating in conjunction with any other antenna or transmitter.

Note: This equipment has been tested and found to comply with the limits for a Class B digital device, pursuant to part 15 of the FCC Rules. These limits are designed to provide reasonable protection against harmful interference in a residential installation. This equipment generates uses and can radiate radio frequency energy and, if not installed and used in accordance with the instructions, may cause harmful interference to radio communications. However, there is no guarantee that interference will not occur in a particular installation. If this equipment does cause harmful

interference to radio or television reception, which can be determined by turning the equipment off and on, the user is encouraged to try to correct the interference by one or more of the following measures:

- Reorient or relocate the receiving antenna.
- Increase the separation between the equipment and receiver.
- Connect the equipment into an outlet on a circuit different from that to which the receiver is connected.
- Consult the dealer or an experienced radio/TV technician for help.