



Contents

| | |
|---|----|
| ■ Brief introduction | 1 |
| ■ Before use | 1 |
| 1. Overview..... | 1 |
| 2. Charging for headset..... | 2 |
| 2. Charging for charging case..... | 2 |
| ■ Getting started | 3 |
| 1. Wearing headset..... | 3 |
| 2. One earbud connecting with cellphone..... | 3 |
| 3. Two earbuds connecting with cellphone..... | 5 |
| 4. Earbuds pairing/connecting..... | 6 |
| 5. Function operation-use one earbud | 6 |
| 6. Function operation-use two earbuds | 8 |
| 7. Battery display..... | 8 |
| 8. Prompt tone..... | 9 |
| 9. Factory Reset..... | 9 |
| ■ Care and maintenance | 10 |
| ■ FAQs | 11 |
| ■ Specification | 11 |

Welcome to use this True Wireless Bluetooth headset, BTH171Q. Please read this user's manual carefully before use.

■ Brief introduction

BTH171Q is a True Wireless Bluetooth Headset ,each ear piece comes with a Microphone that can be used individually or used together for stereo sound.The earbuds are equipped with a charging case, which is convenient to carry and charge. The charging case supports wireless charging, and you can charge the charging case with your wireless charger.

■ Before use

1. Overview



| | | | |
|---|------------------------|---|--------------------------------|
| 1 | LED indicator | 5 | Top case |
| 2 | MFB touch-button | 6 | Wireless charge induction area |
| 3 | Microphone | 7 | Charging indicator light |
| 4 | Charging metal contact | 8 | Charging jack |

2. Charging for headset

When the headset is low on power, it emits “Battery low” once every 2 minutes and the red LED flashes slowly 4 times in a row every 1 minute. Please recharge the battery of the headset.

The way of charging for the earbuds as following:

1. Put the earbuds into the charging case to ensure that the charging pins connect well, and start charging when you see the red indicator light of the earbuds on.

Red light on: Charging

Red light off: Finish charging

2. Charging should be completed in roughly 1.5 hours.



Remarks:

- ◆ The left and right earbuds on charging case of an arbitrary charge can be charged.
- ◆ Please cover the charging case cover, so that the earbuds and the charging case connect well when it is charging.
- ◆ When the earbuds are not put into charge case, the indicator light of charging case is off. When the earbuds are put into charging case, the white indicator light of the charging case will light up and indicate the power of the current charging case:

White LED flashes once every 2 seconds = low battery power;

White LED flashes three times every 2 seconds = sufficient battery power;

White LED remains on = full battery power;

After removing the earbuds from the charging case, the indicator LED of the charging case will automatically extinguish after 1 minute.

3. Charging for charging case

When any of the following situations occurs, it indicates that the charging case will be low power. You need to charge the charging case:

- 1) Put the earbuds into the charging case, and find that the white indicator

light of the charging case flashes once every 2 seconds. It means that the charge case is low power.

2) When the indicator light of the charging case doesn't turn on and the earphone cannot be charged, it means that the battery of the charging case has been used up

The charging case supports USB cable charging and wireless charging. The way of charging for the charging case as following:

Using USB cable

- 1) Plug the Type-C charging cable into the case's charging jack.
- 2) Plug the USB cable into a USB port of PC or a 5Volt USB charge.

Wireless charging

- 1) Connect the wireless charger to the power cable. (some wireless chargers with built-in batteries may not need to be connected to the power cable)
- 2) Put the charging case in the center of the wireless charger as far as possible for maximum efficiency charging.

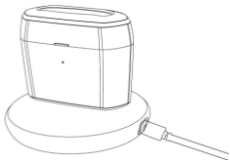
White LED flashes: Charging

White LED on: Finish charging

- 3) Charging should be completed in roughly 1.5 hours. When using wireless charging, the charging time will be slightly longer.
- 4) If the earbuds are in the charging case, it can charge the earbuds while charging the charging case.



Type-C charging



Wireless charging



Remarks:

- 1) The battery is recyclable.
- 2) Batteries (battery pack or batteries installed) shall not be exposed to excessive heat place, such as sunshine, fire or the like.
- 3) Please make sure the charging jack is dry before charge.

■ Getting started

1. Wearing headset

a. Choose the suitable size ear tips

b. Ensure each earbuds is worn on the correct ear. “L” should be worn on the left ear and “R” worn on the right ear.



Left ear



Right ear

2. One earbud connecting with cellphone

Each earbuds can be connected singly to the cellphone.

1. Power on

1) When charging, the earbuds will turn on automatically when they are taken out of the charging case.

2) If the earbuds are power off, you should press touch-button for about 3s until white LED flashes as the same time the earbuds emits “Power on”. Then release. This is now in the “Power on” state.

2. Pairing

1) After the earbud is taken out of the charging case, it will be power on. Then it will connect back to the phone you paired with before. When the earbuds and the cellphone fails to connect back, the earbuds will automatically enter the matching state.

2) If the earbuds are power off, you should press touch-button for about 5s and release it when the red LED and white LED flash quickly and alternately. You will hear “Pairing”. The earbuds are in “Pairing” mode



3.Connecting

To connecting your earbuds to a Bluetooth device, first ensure the device has Bluetooth enable and it is in pairing mode(See your device manual for setting pairing mode) . Once your earbuds are in pairing mode, you should be able to see it in the list of Bluetooth devices.

You should see BTH171Q-L for left earbuds or BTH171Q-R for the right earbuds appear in your contactable devices list.After successful connection, the earbuds prompts "Phone is connected".

You need to connect one of them to use as master.However,if you want to use them singly,only connect the desired ear L or R, and turn off another one.



4.When Left earbud is successfully paired with the phone, the phone will Pop-up a dialog : “Headset would like to pair with your phone”. If you click “pair”, the slave earbud will also be paired with the phone.And master-slave switching function can be OK. If it is not confirmed at this time, Left earbud and Right earbud cannot switch subsequently.

5.Power off

- 1) Auto power off once put into charging case
- 2) Press touch-button about 5s and release it till red LED is on,and earbuds prompt “Power off”.

Remark:

- ◆ The earbuds will automatically connect with the latest Bluetooth device when power on again.
- ◆ If the earbuds are not connected with the phone after 10 seconds (the phone is turned off the Bluetooth or out of range, Etc.) , they will enter into pairing mode automatically. If it does not reconnect after 2 minutes , it will enter standby modeautomatically. After 3 minutes of standby mode, it will turn off automatically.

3. Two earbuds connecting with cellphone

In this mode use two earbuds at the same time to enjoy stereo sound.



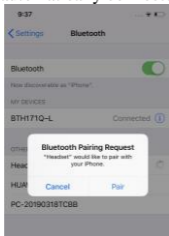
1) Turn on the master earbud (BTH171Q-L) and connect it with your Bluetooth device, then power on the other earbud and it will connect with each other automatically.

2) master-slave switch: When the master earbud is successfully paired with the phone, the phone will pop up a dialog: "Headset would like to pair with your phone". If you click "pair", the slave earbud will also be paired with the phone. And master-slave switching function can be OK. In the following cases, the slave earbud can automatically switch and connect to the mobile phone, so you continue to use:

(1) in the process of use, when the master earbud is automatically turned off at low power, the slave earbud will be automatically connected to the mobile phone.

2) when the master earbud is disconnected from the mobile phone out of range, the slave earbud will be automatically connected to the mobile phone.

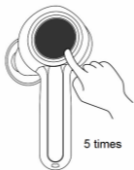
3) when the master earbud is put into the charging case, the slave earbud will be automatically connected to the mobile phone.



4.Earbuds pairing/connecting

Please use this step if two headset can not be connect with each other.

- 1.Turn off two earbuds respectively(don't put them into the charging case).
- 2.Clear the pairing list: Choose one of the earbuds. Firstly, enter the pairing mode.Then hit the touch button 5 times, while the red LED and the white LED turns on for 1 second. The pairing list will be cleared when emits prompt tone. The other headset cleans the pairing list by doing the same.



3.The earbuds will enter TWS pairing mode automatically when they are turned on (indicator light status: red and white lights flash slowly).After successful connection, the master earbud(L) will emits“Pairing” after a "dang"prompt, which indicator light status will be: red LED and white LED flash alternately(it keeps waiting to be paired with your phone), while the slave earbud(R) will emits ‘Dang’ and indicator status will be: white LED flash twice time every 5 seconds.

Remarks:

- ◆ In normally the two earbuds will connect automatically once you have taken out of the charging case,which set in factory.
- ◆ You can connect the two earbuds according above operation if they failed connecting.

5.Function operation-use one earbud

1. music

| Function | Status of earbuds | L | R | Prompt tone |
|---------------|-------------------|----------------------------------|-----------------------------------|-------------|
| Play | Pausing | Double-click touch-button | Double-click touch-button | Dang |
| Pause | Playing music | Double-click touch-button | Double-click touch-button | Dang |
| Previous song | Playing music | Press Left touch button about 2s | N/A | Dang |
| Next song | Playing music | N/A | Press Right touch button about 2s | Dang |
| Volume up | Playing music | N/A | Once-click Right touch-button | Dang |
| Volume down | Playing music | Once-click Left touch-button | N/A | Dang |

2. Calling

| Function | Status of earbuds | L | R | Prompt tone |
|----------------|-----------------------|-----------------------------|-----------------------------|---------------------------------------|
| Cancel calling | Calling | Once-click touch-button | Once-click touch-button | Two Tone_High Falling after Dang tone |
| Answering | Incoming call ringing | Once-click touch-button | Once-click touch-button | Dang |
| Reject | Incoming call ringing | Press touch button about 2s | Press touch button about 2s | Dang |
| End calling | During a call | Double-click touch-button | Double-click touch-button | Two Tone_High Falling after Dang tone |
| Transfer audio | During a call | Press touch button about 2s | Press touch button about 2s | Two Tone_High Falling |
| Active SIRI | Connected device | N/A | Triple-click touch-button | “Voice dial” |
| Volume up | During a call | N/A | Once-click touch-button | Dang |

| | | | | |
|-------------|---------------|-------------------------|-----|------|
| Volume down | During a call | Once-click touch-button | N/A | Dang |
|-------------|---------------|-------------------------|-----|------|

6.Function operation---two earbuds connecting with cellphone

1. music

| Function | Status of earbuds | L | R | Prompt tone |
|-----------------|--------------------------|----------------------------------|-----------------------------------|--------------------|
| Play | Pausing | Double-click touch-button | Double-click touch-button | Dang |
| Pause | Playing music | Double-click touch-button | Double-click touch-button | Dang |
| Previous song | Playing music | Press Left touch button about 2s | N/A | Dang |
| Next song | Playing music | N/A | Press Right touch button about 2s | Dang |
| Volume up | Playing music | N/A | Once-click touch-button Right | Dang |
| Volume down | Playing music | Once-click touch-button Left | N/A | Dang |

2. Calling

| Function | Status of earbuds | L | R | Prompt tone |
|-----------------|--------------------------|-----------------------------|-----------------------------|---------------------------------------|
| Cancel calling | Calling | Once-click touch-button | Once-click touch-button | Two Tone_High Falling after Dang tone |
| Answering | Incoming call ringing | Once-click touch-button | Once-click touch-button | Dang |
| Reject | Incoming call ringing | Press touch button about 2s | Press touch button about 2s | Dang |
| End calling | During a call | Double-click touch-button | Double-click touch-button | Two Tone_High Falling after Dang tone |
| Transfer audio | During a call | Press touch button about 2s | N/A | Two Tone_High Falling |
| Active | Connected | N/A | Triple-click | “Voice dial” |

| | | | | |
|-------------|---------------|-------------------------|-------------------------|------|
| SIRI | device | | touch-button | |
| Volume up | During a call | N/A | Once-click touch-button | Dang |
| Volume down | During a call | Once-click touch-button | N/A | Dang |

3. Gang control to power off

When using two earbuds, either earbud of the left or right turns off, and the other earbud will be turned off at the same time. The earbuds will have corresponding indicator light and prompt sound when they turns off.

Remarks:

- ◆ If headset in calling mode, both earbuds have voice and can operate function, but only the earbud which connecting with cellphone can pick up sound.
- ◆ When using two earbuds to talk, the transfer audio operation is on the master earbud. In other words, when Left earbud is master, long press left touch - button about 2s for transfer audio; when Right earbud is master, long press right touch - button about 2s for transfer audio.

7. Battery display

When the earbuds are connected to an IOS device, it will display the battery of earbuds on the device. When the earbuds is low on power ,the battery indicator will turn red and show a depleted battery icon.The headphone will also give an audio prompt to charge your headset.



Full charge



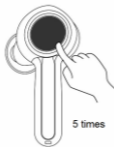
Low battery

8. Meaning of indicator light

| indicator light | | Prompt tone |
|-----------------|---|-------------------------|
| Earbuds | Red and white LED flash quickly alternately | Pairing mode with phone |
| | Red and white LED flash slowly alternately | TWS pairing mode |
| | White LED flashes every 5 seconds | Unconnected |
| | White LED flashes twice every 10 seconds | Connected |
| | Red LED flashes four times every minute | Low battery |
| Charging case | White LED flashes every 2 seconds | Low battery |
| | White LED flashes three times every two seconds | Full battery |
| | White LED kept on | Has been charged |

9. Factory Reset

When the earbuds are in the pairing mode, five times click the touch button, and the factory reset when the red LED and blue LED turns on for 1 second. At the same time, you will hear prompt tone and turn off.



Five times click the touch button

Remarks:

- ◆ After factory reset, the paired list of two earbuds as well as earbuds and mobile phone will be deleted. The earbud does not automatically reconnect the mobile phone and the other earbud after turning on.
- ◆ After factory reset, when the earbud turns on again, it will automatically enter the TWS pairing mode (red and white lights flash slowly alternately). Two earbuds will be paired automatically. After TWS connection, left earbuds will continue to wait for pairing with the mobile phone (red and white lights flash quickly alternately).

■ Care and maintenance

Read the following recommendations carefully before using BTH171Q. Following these you will be able to enjoy this product for many years.

- ◆ Keep it dry and don't put it in the damp place to avoid the product's internal circuit being affected. Don't wear the headset when in strong exercise to avoid sweat enter.
- ◆ Keep the product away from direct sunlight or hot places. High temperatures will shorten the life of electronic devices, destroy the battery or distort certain plastic parts.
- ◆ Don't expose the product to cold areas. It may damage the internal circuit board.
- ◆ Don't try to disassemble the product as it may get damaged if you are not professional.
- ◆ Don't let it fall down onto the floor or other hard surfaces. The internal circuit might get damaged.
- ◆ Don't use intensive chemical products or detergent to clean the product.
- ◆ Don't scratch the surface with sharp things.
- ◆ Don't use this product during strenuous exercise. It may get damaged by sweat.

In case the product doesn't function properly, send it to the store you bought it. The staff will help you to solve the problem

■ FAQs

1. What does it mean when red LED flashes slowly four times a minute?
Battery is low power, need to be recharged.

2. Why is the red LED off when charging?

- a) The charging case may not have enough power to charge the headset. Please charge the charging case.
- b) Make sure the metal contacts of the earbud and charging case are free of obstacles.
- a) The battery may dry up. Please charge the battery for 30 minutes, and then the red LED will be on.

3. Why can't I hear the sound on the headset?

- a) Make sure the volume is not too low or muted;
- b) Make sure the headset connects with the mobile phone correctly;
- c) Make sure the distance between the headset and the cell phone is in the available Bluetooth range.

4. Why can't I hear the sound clearly on the headset?

- a) Make sure the mobile phone is in the strong signal area;
- b) Make sure the headset is in the available range. and no other block.

5. Why the pause/play, last/next song not function when playing music?

Make sure your Bluetooth device supports AVRCP (Audio/Video Remote Control profile)

■ Specifications

| | |
|---|---------------------------------|
| Bluetooth version | Bluetooth V5.0 |
| Bluetooth profiles | HFP, HSP, A2DP and AVRCP |
| Operating distance | 10 meters |
| Music time(one earbud) | Up to 15 hours(maximum volume) |
| | Up to 17 hours (50% volume) |
| Music time(two earbuds) | Up to 13 hours (maximum volume) |
| | Up to 14 hours (50% volume) |
| Talk time | About 13hours |
| Standby time | About 130hours |
| Charging time for earbud | About 1.5 hours |
| Charging time for case | About 1.5 hours |
| cycle count of the charging case to charge the earbuds | More than 2 times |
| Charging inputfor case | USB charging: DC5.0V ---500mA |
| Weight | One earbud:6.5g |
| | Charging case:44.2g |
| Measure | Earbud: 42*22.4*23mm |
| | Charging case: 63*30.3*47.8mm |

NOTE: This equipment has been tested and found to comply with the limits for a Class B digital device, pursuant to part 15 of the FCC Rules. These limits are designed to provide reasonable protection against harmful interference in a residential installation. This equipment generates uses and can radiate radio frequency energy and, if not installed and used in accordance with the instructions, may cause harmful interference to radio communications. However, there is no guarantee that interference will not occur in a particular installation. If this equipment does cause harmful interference to radio or television reception, which can be determined by turning the equipment off and on, the user is encouraged to try to correct the interference by one or more of the following measures:

- Reorient or relocate the receiving antenna.**
- Increase the separation between the equipment and receiver.**
- Connect the equipment into an outlet on a circuit different from that to which the receiver is connected.**
- Consult the dealer or an experienced radio/TV technician for help**

Changes or modifications not expressly approved by the party responsible for compliance could void the user's authority to operate the equipment.

This device complies with Part 15 of the FCC Rules. Operation is subject to the following two conditions:

- (1) this device may not cause harmful interference, and**
- (2) this device must accept any interference received, including interference that may cause undesired operation.**