

RT2070 USB Wireless LAN Adapter User's Manual

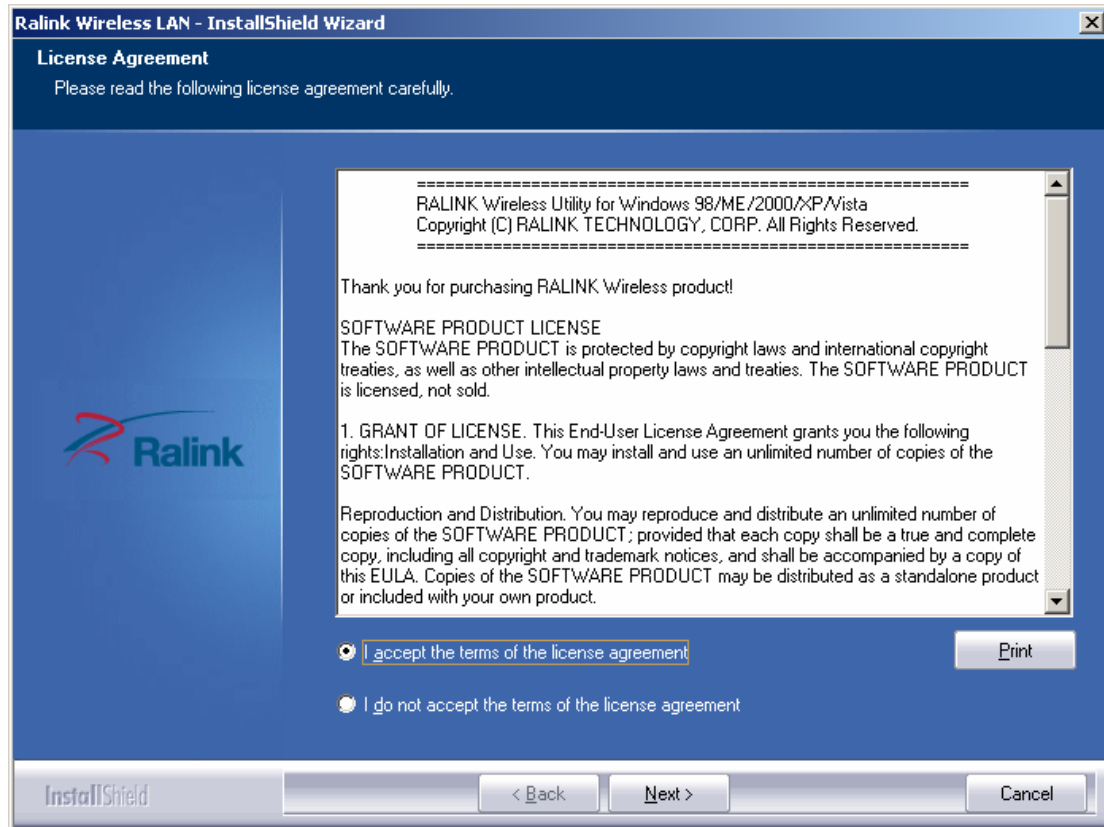
1 Install the driver

a Insert the installation CD into your CD-ROM driver, Double click the icon

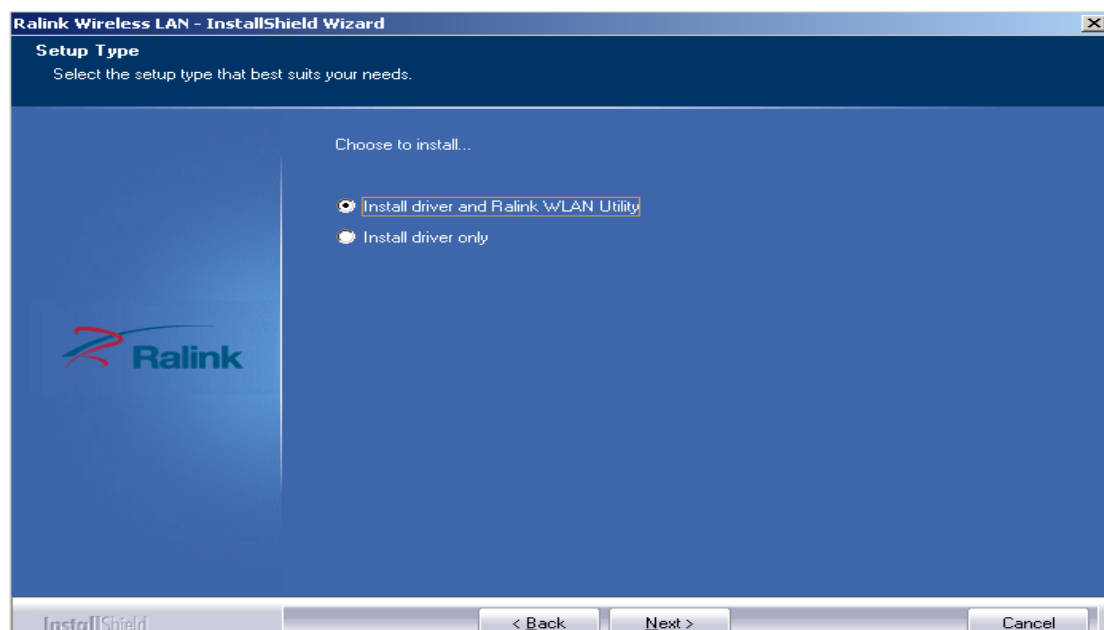


to start setup

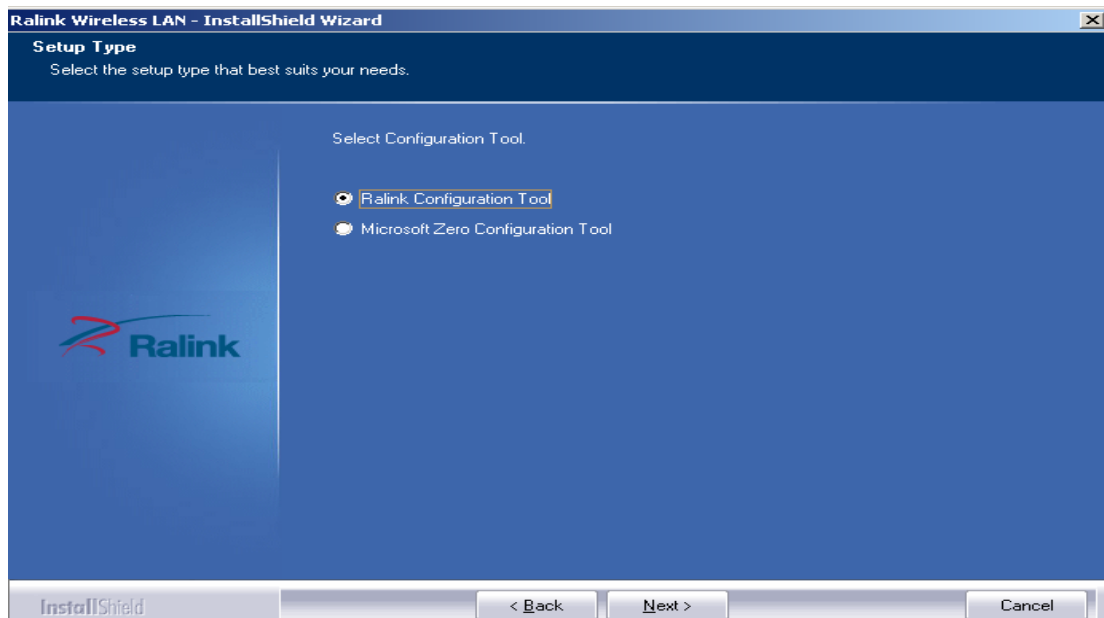
b. Select “I accept the terms of license agreement”.



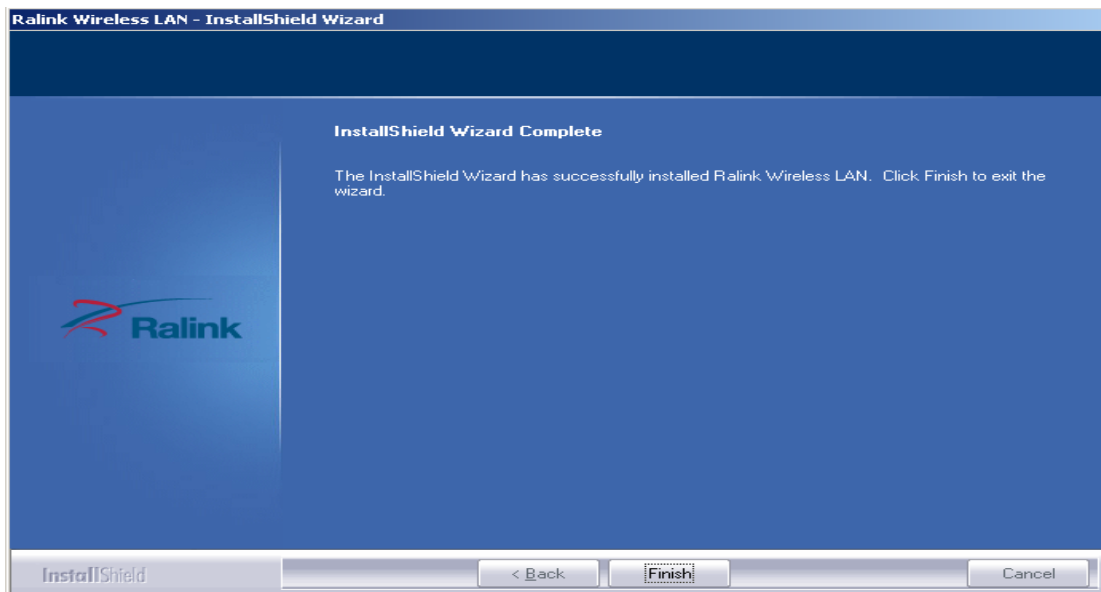
c Choose *Install driver and Ralink WLAN Utility* and click *next* to go on



d Choose *Ralink Configuration tool* and click *next* to go on



f Click **Finish** to end the setup



2 Plug in your usb wireless LAN adapter, it will be recognized and auto installed.

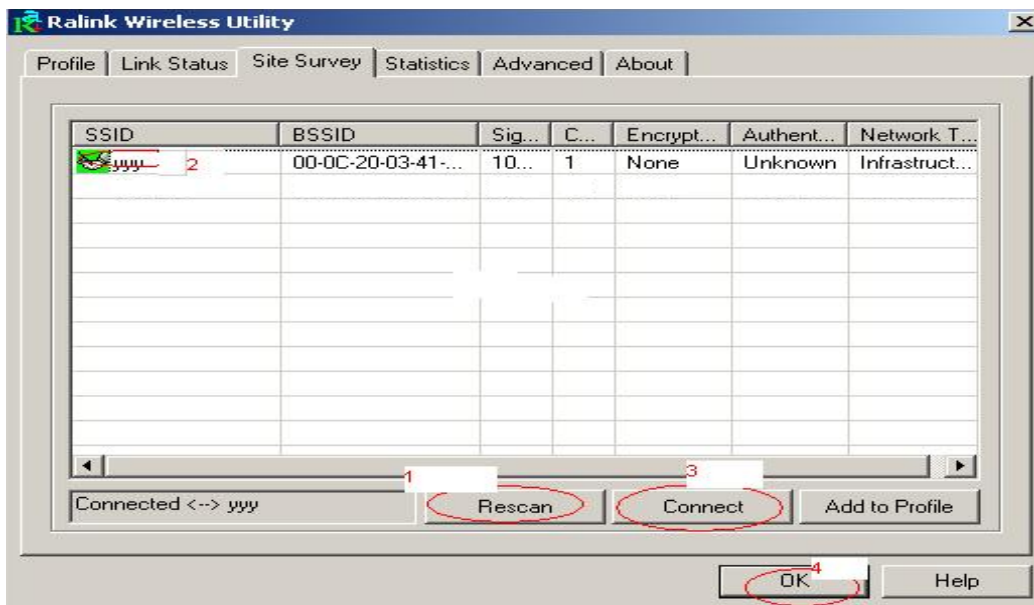
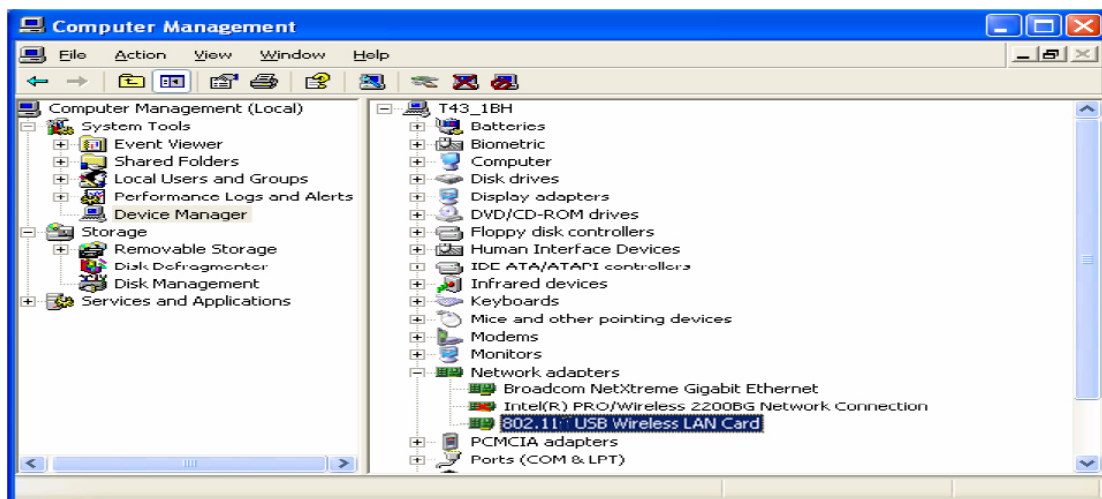
Just confirmed it like below.

3 Make infrastructure connection

Double click the icon in red circle



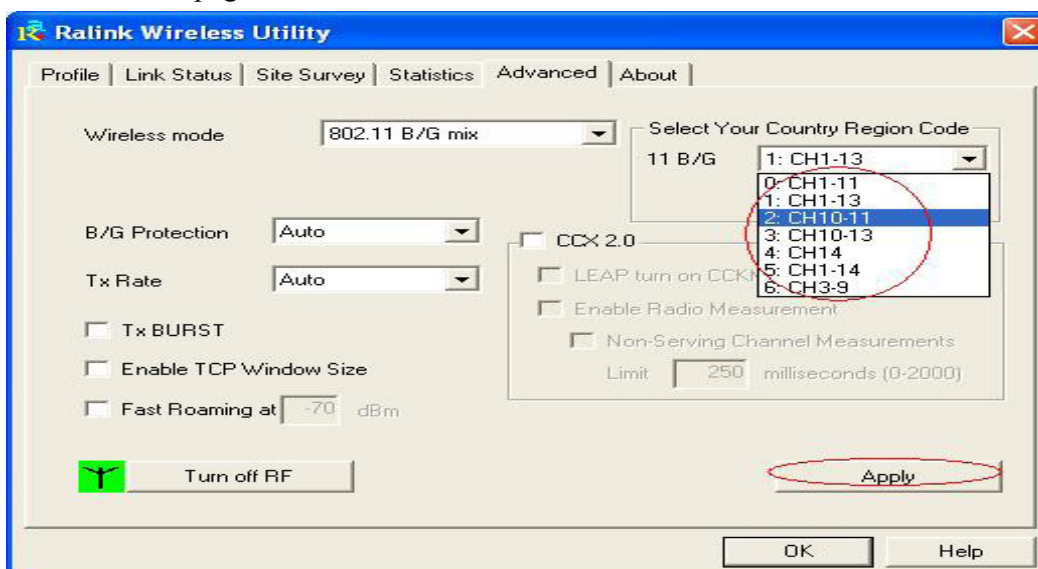
You will see:



You can click the button **Rescan** to find which AP is in range, they will show on the window, choice one you want to connect, and click the button **connect**, and click **ok** to finish the connection operation.

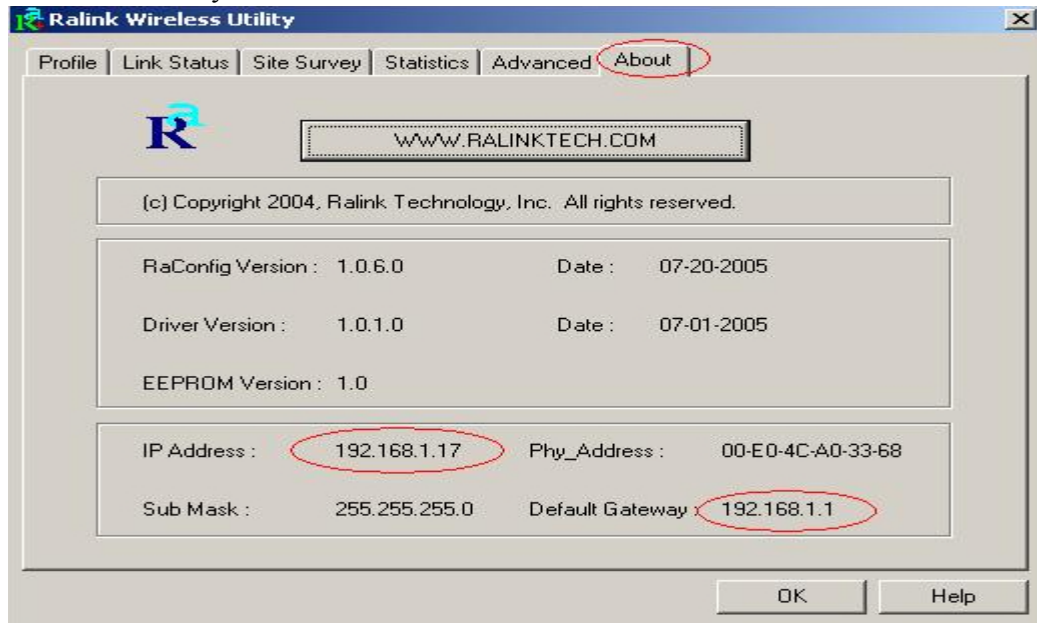
An infrastructure connection is accomplished.

Note, please choose correct channel setting up to your law, for example, ch13 is permitted in your country, and you set your router at ch13, while you choose ch1-ch11 (default setting), you will never find the AP, and you will have to choose ch1-ch13 setting in **Advanced** page as below

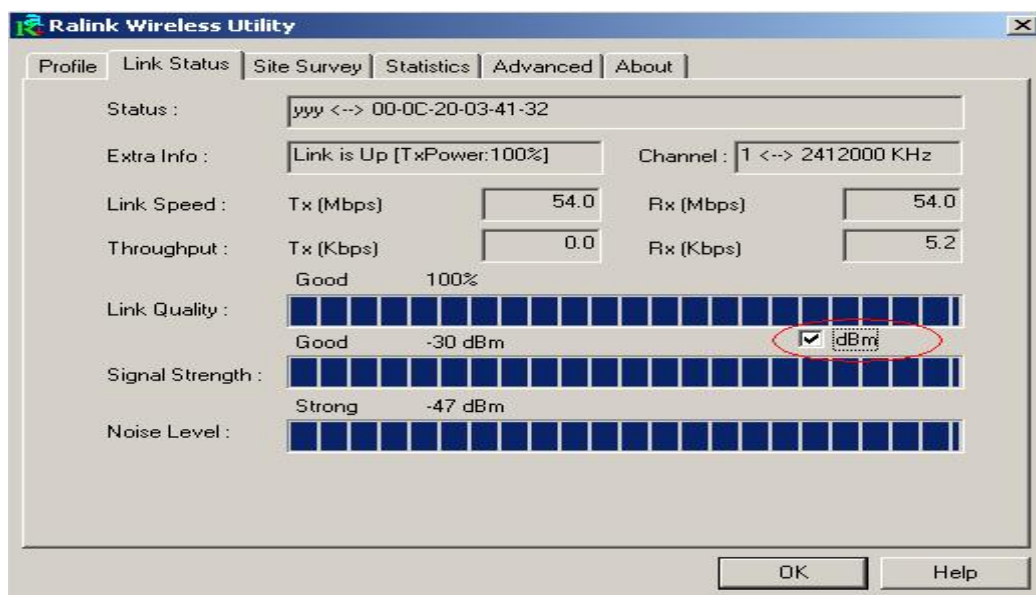
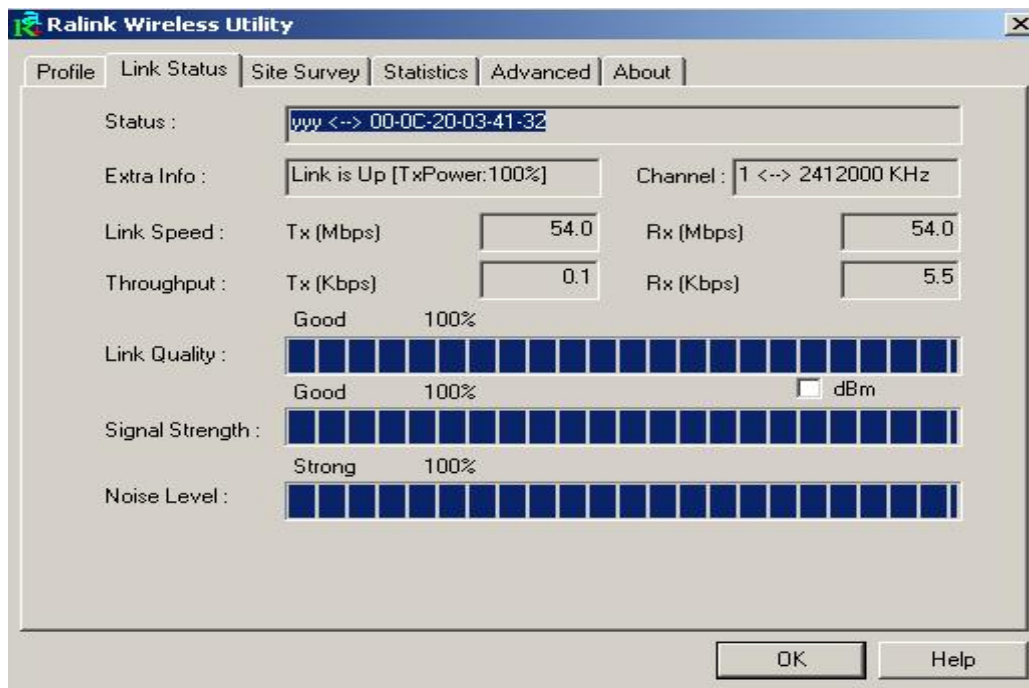


4 Some help information in *Rlink Wireless Utility*

How to find out your IP address:

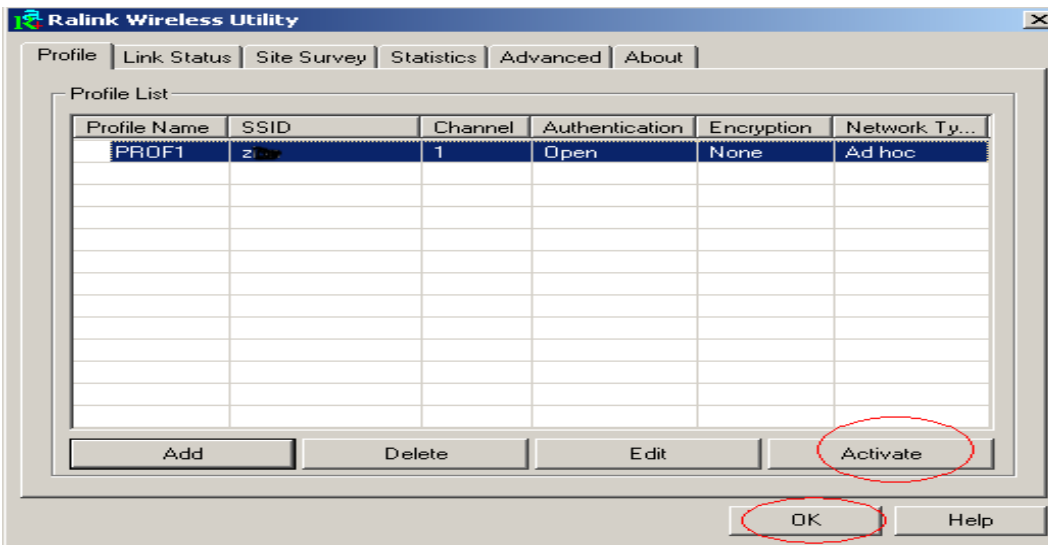


How to find out which a WIFI environment you are inside



5 Make Ad-Hoc mode connection

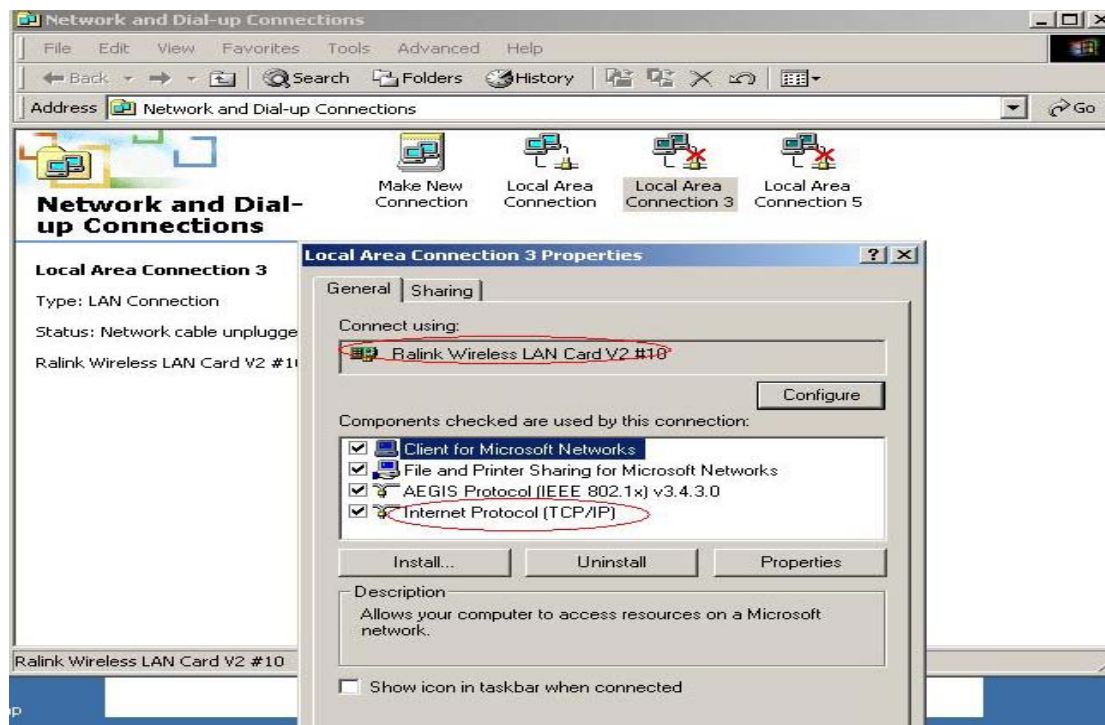
5.1 Make an Ad-Hoc SSID



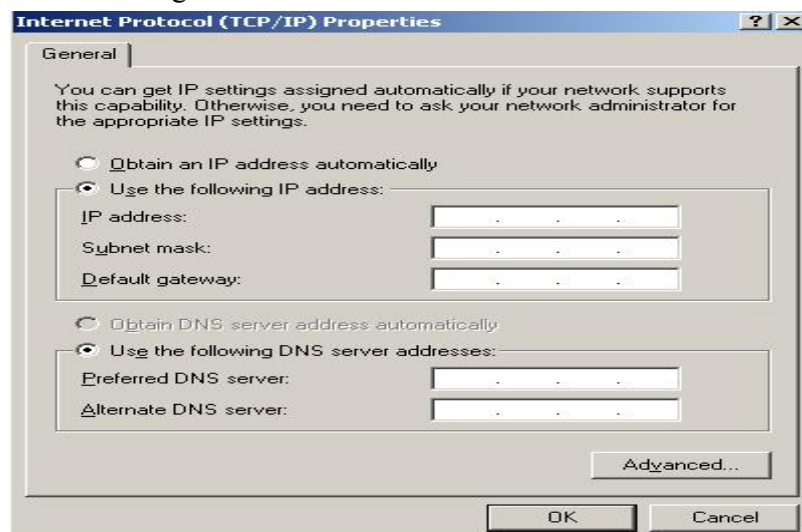
D

5.2 Setup static IP address for the Ad-Hoc link

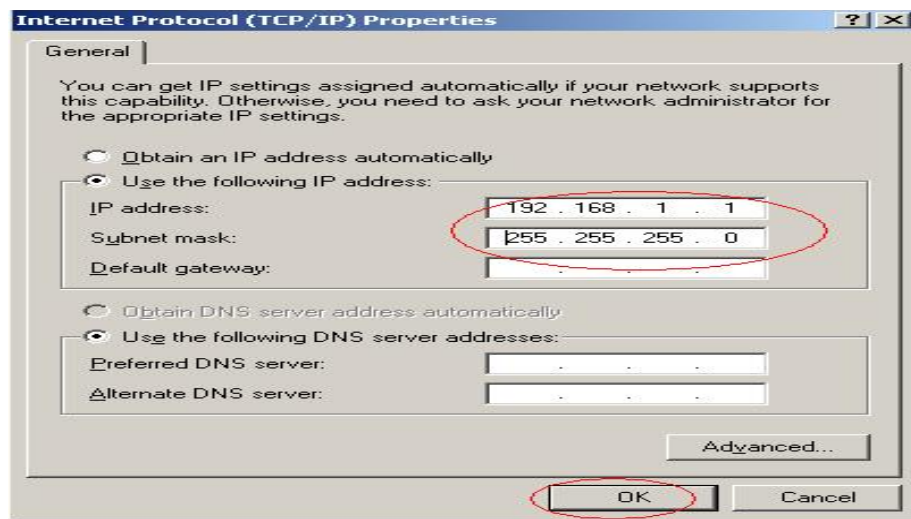
A At its property page, double click item *Internet Protocol (TCP/IP)*



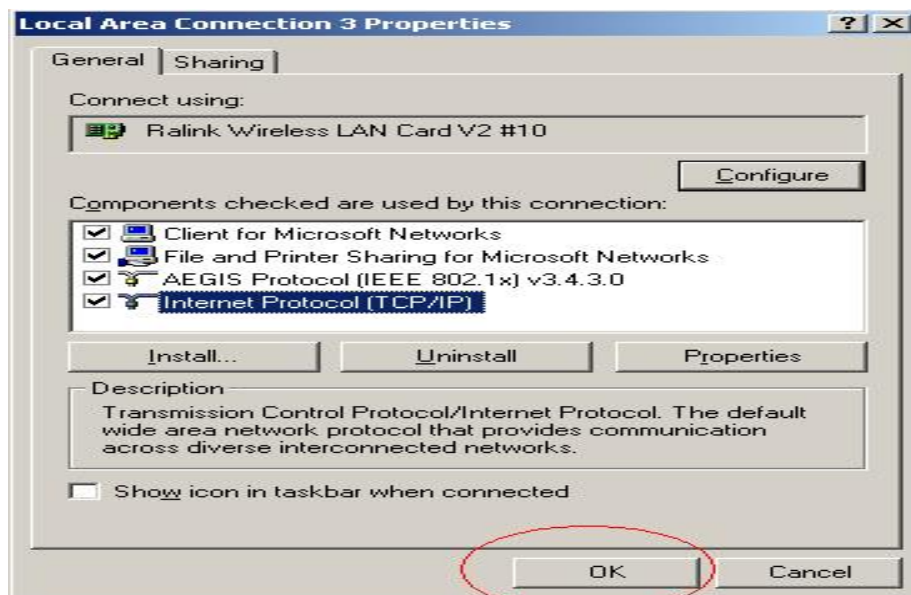
B You will get



C Fill the IP address blank, example as below:



D Click *ok* to finish the setup



5.3 Ad-Hoc setup for one point accomplished

5.4 Setup another Ad-Hoc point as step A,B,C,D.

5.5 Ad-Hoc mode link accomplished. And you can visit each other.

Note: To make an Ad-Hoc mode link, Do remember to choice the same channel, its static IP address should be in the same netsub, and the SSID should be the same too.

FCC Warning

This device complies with Part 15 of the FCC Rules. Operation is subject to the following two conditions:

(1) this device may not cause harmful interference, and (2) this device must accept any interference received, including interference that may cause undesired operation.

NOTE 1: This equipment has been tested and found to comply with the limits for a Class B digital device, pursuant to part 15 of the FCC Rules. These limits are designed to provide reasonable protection against harmful interference in a residential installation. This equipment generates, uses and can radiate radio frequency energy and, if not installed and used in accordance with the instructions, may cause harmful interference to radio communications. However, there is no guarantee that interference will not occur in a particular installation. If this equipment does cause harmful interference to radio or television reception, which can be determined by turning the equipment off and on, the user is encouraged to try to correct the interference by one or more of the following measures:

- Reorient or relocate the receiving antenna.
- Increase the separation between the equipment and receiver.
- Connect the equipment into an outlet on a circuit different from that to which the receiver is connected.
- Consult the dealer or an experienced radio/TV technician for help.

Any changes or modifications not expressly approved by the manufacturer could void the user's authority to operate the equipment.

IMPORTANT NOTE: FCC Radiation Exposure Statement:

This equipment complies with FCC radiation exposure limits set forth for an uncontrolled environment. End users must follow the specific operating instructions for satisfying RF exposure compliance.

IEEE 802.11b or 802.11g operation of this product in the U.S.A. is firmware-limited to channels 1 through 11.

Antennas must be installed to provide 20 cm separation distance from the transmitting antenna to the body of the user during normal operating condition. This device must not be co-located or operating in conjunction with any other antenna or transmitter.

Only those antennas filed under FCC ID: WABWTUSB2070 can be used with this device. When the module is installed in the final system where the antenna location is less than 20 cm separation distance to the body of user, additional equipment authorization must be applied.

FCC ID label on the final system must be labeled with “Contains FCC ID: WABWTUSB2070” or “Contains transmitter module FCC ID: WABWTUSB2070”.

In the user guide, final system integrator must be ensure that there is no instruction provided in the user guide to install or remove the transmitter module.

The transmitter module must be installed and used in strict accordance with the manufacturer's instructions as described in the user documentation that comes with the product. This device complies with the following radio frequency and safety standards.