

Annex B.ii. Photograph 2: EUT Internal Photo



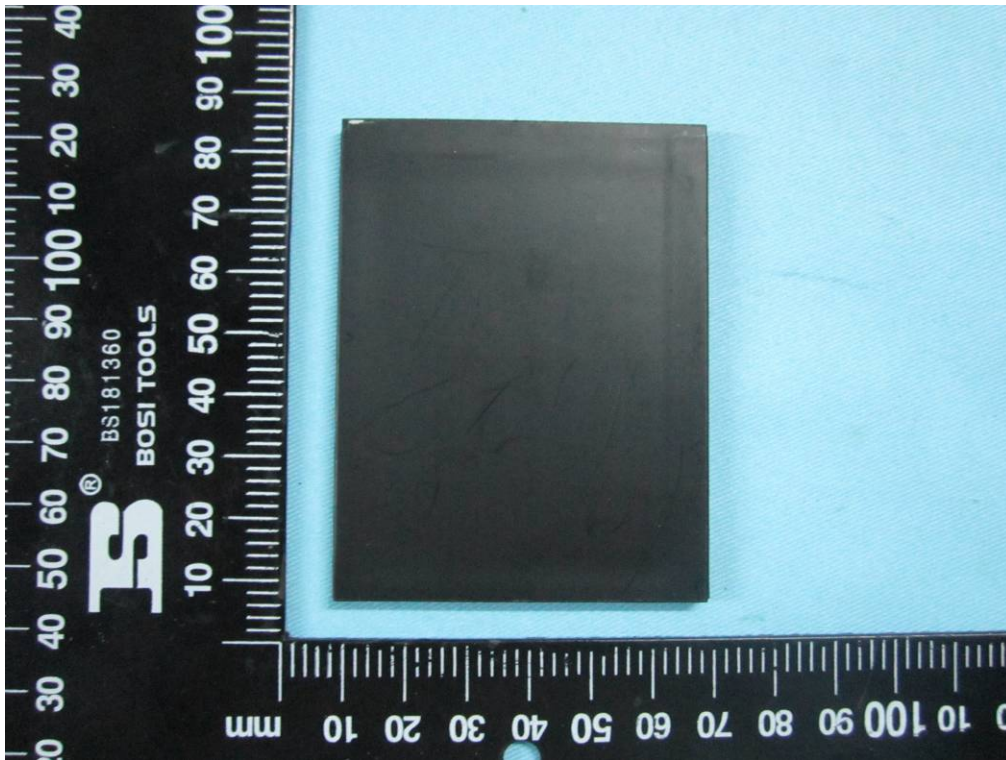
Cover Off - Top View 1



Cover Off - Top View 2



Battery - Top View



Battery - Bottom View



SIEMIC, INC.

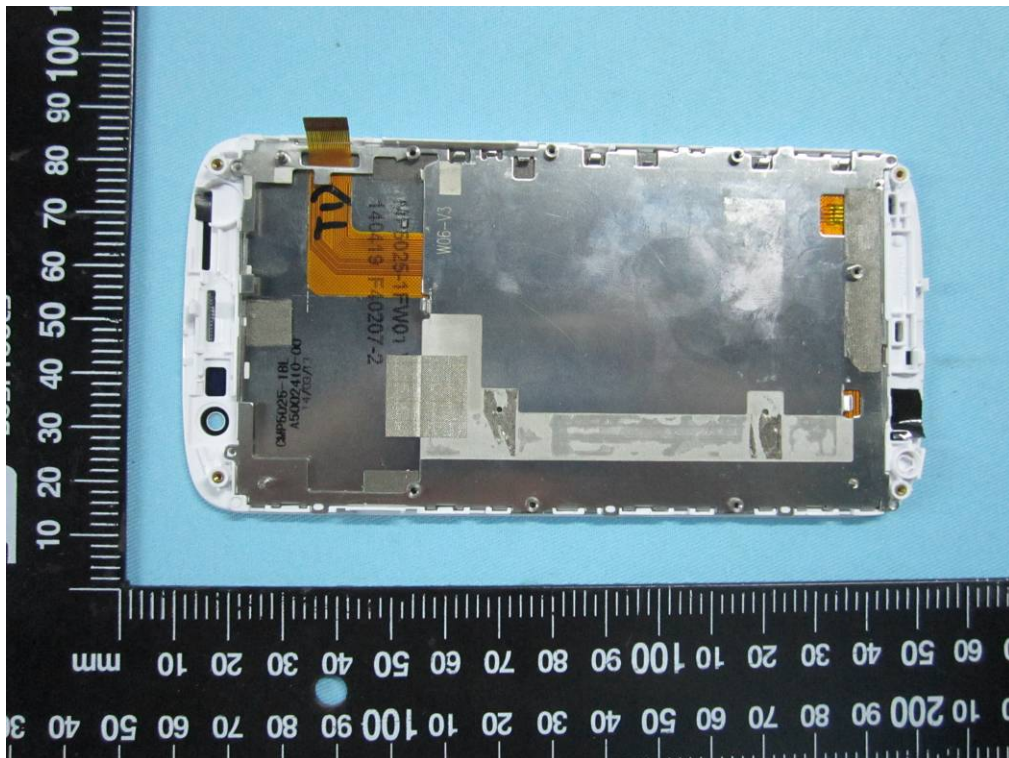
Accessing global markets

Title: EMC Test Report for Mobile phone
Main Model: SL5000
Serial Model: N/A
To: FCC Part 15 Subpart B Class B: 2013 , ANSI C63.4:2009

Report No.: 14070215-FCC-E1
Issue Date: August 01, 2014
Page: 25 of 36
www.siemic.com
www.siemic.com.cn



LCD – Front View



LCD – Rear View

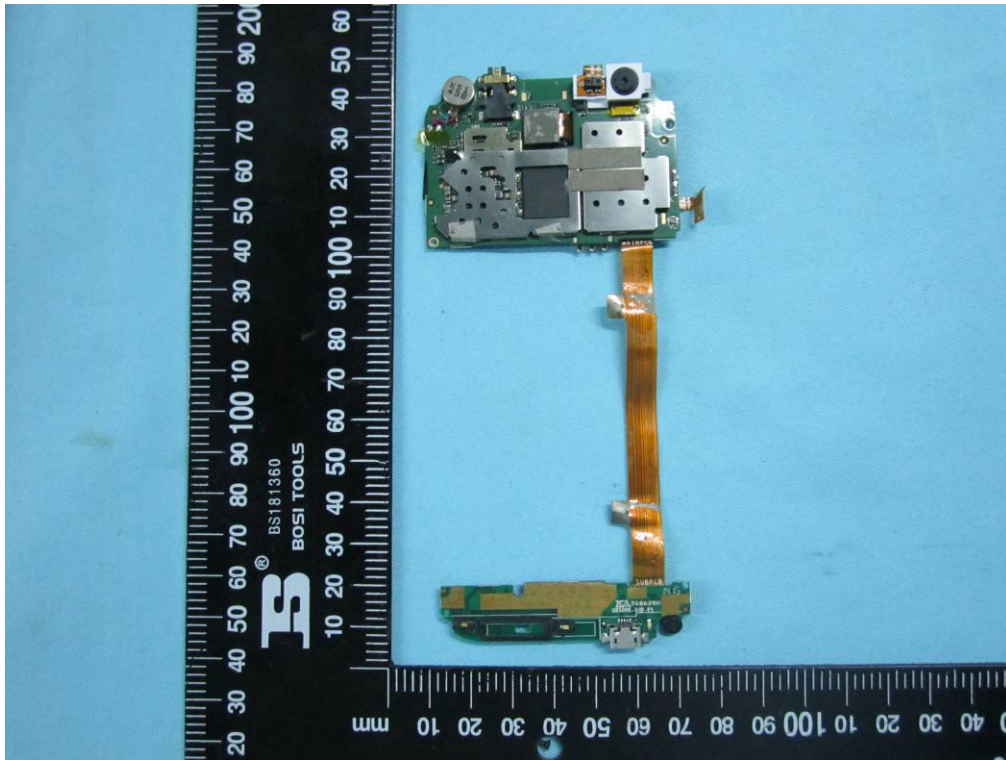


SIEMIC, INC.

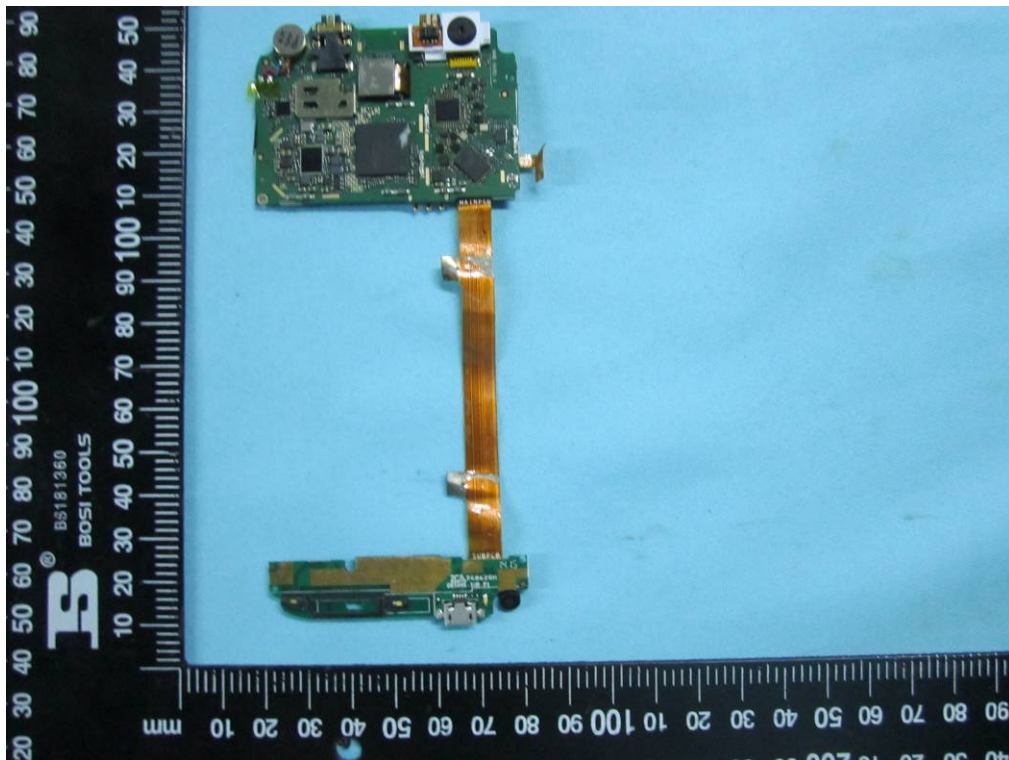
Accessing global markets

Title: EMC Test Report for Mobile phone
Main Model: SL5000
Serial Model: N/A
To: FCC Part 15 Subpart B Class B: 2013 , ANSI C63.4:2009

Report No.: 14070215-FCC-E1
Issue Date: August 01, 2014
Page: 26 of 36
www.siemic.com
www.siemic.com.cn



Mainboard With Shielding - Front View



Mainboard Without Shielding - Front View

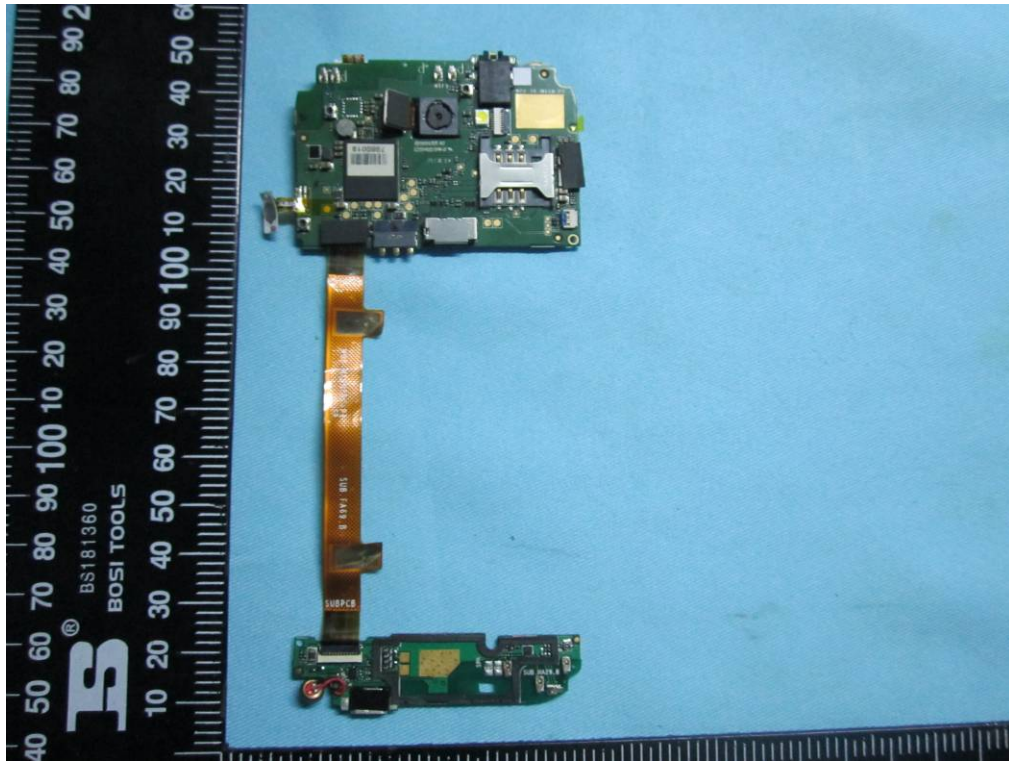


SIEMIC, INC.

Accessing global markets

Title: EMC Test Report for Mobile phone
Main Model: SL5000
Serial Model: N/A
To: FCC Part 15 Subpart B Class B: 2013 , ANSI C63.4:2009

Report No.: 14070215-FCC-E1
Issue Date: August 01, 2014
Page: 27 of 36
www.siemic.com
www.siemic.com.cn



Mainboard- Rear View



BT/BLE/WIFI Antenna View

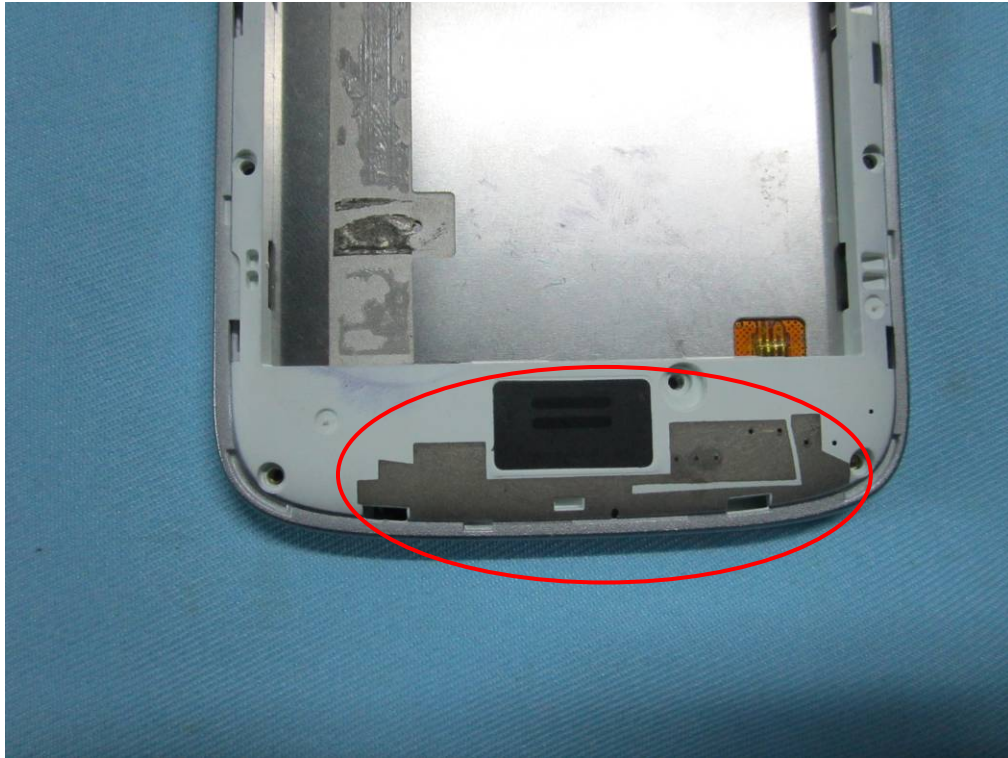


SIEMIC, INC.

Accessing global markets

Title: EMC Test Report for Mobile phone
Main Model: SL5000
Serial Model: N/A
To: FCC Part 15 Subpart B Class B: 2013 , ANSI C63.4:2009

Report No.: 14070215-FCC-E1
Issue Date: August 01, 2014
Page: 28 of 36
www.siemic.com
www.siemic.com.cn



GSM/PCS/UMTS-FDD/LTE Antenna View