

Annex B SAR System PHOTOGRAPHS

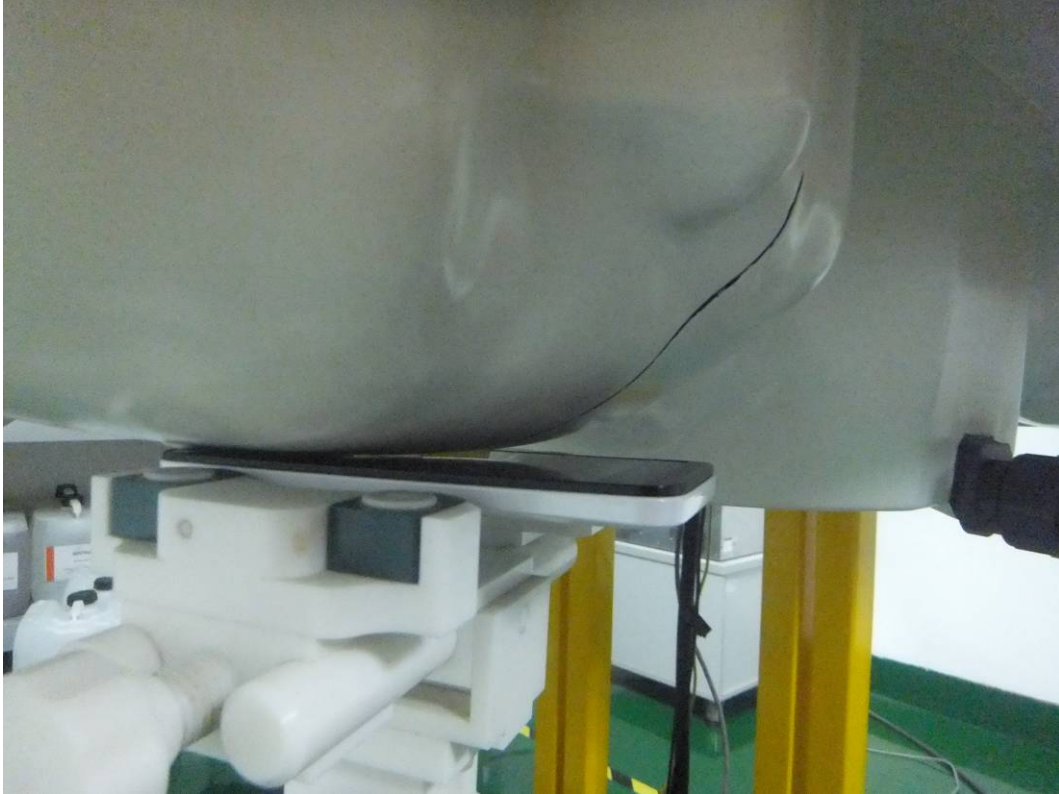


Liquid depth \geq 15cm

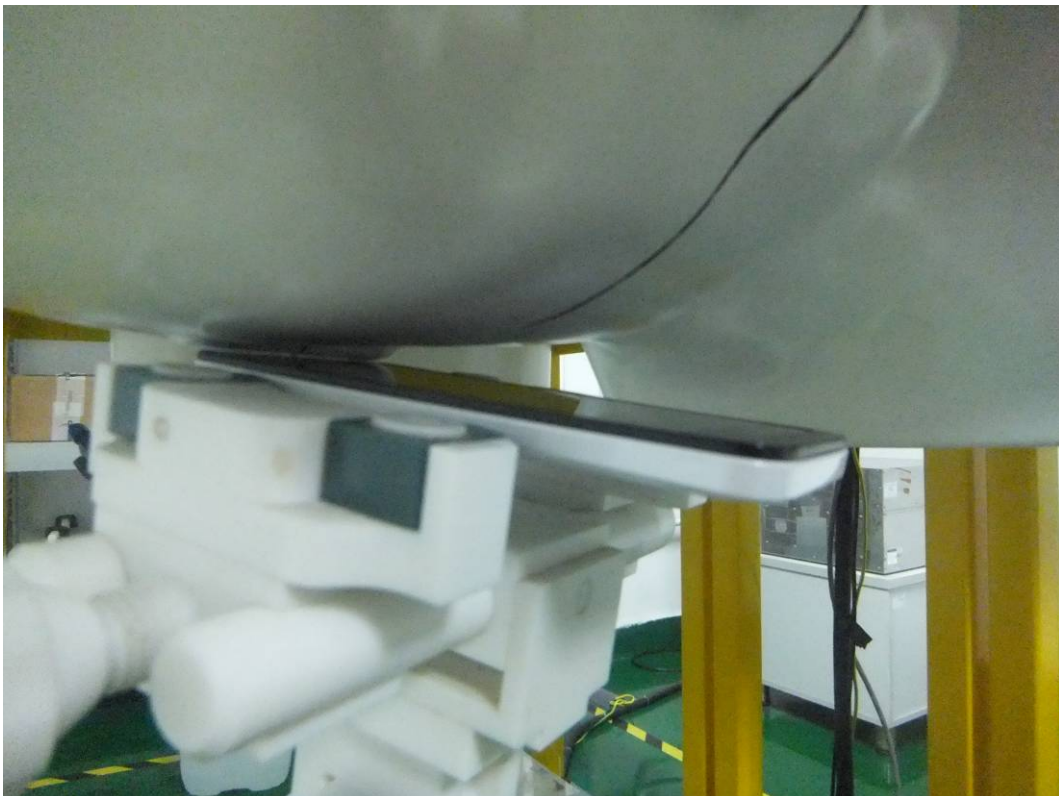


Annex C SETUP PHOTOGRAPHS

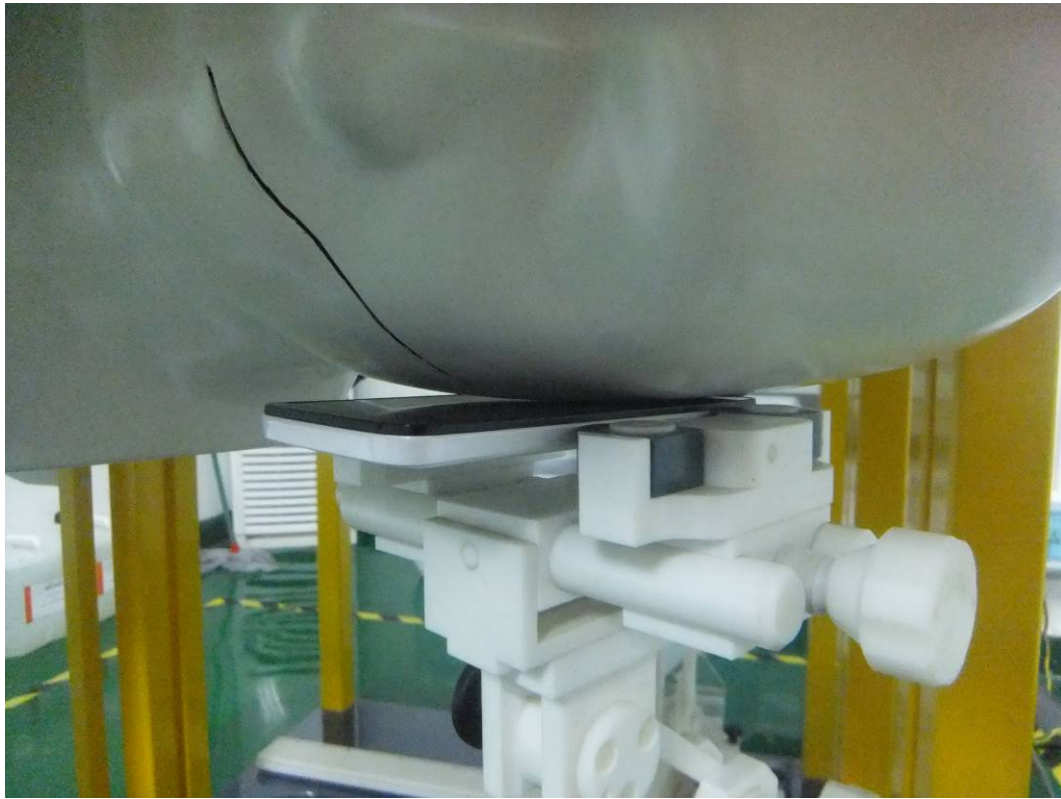
Right Head Touch View



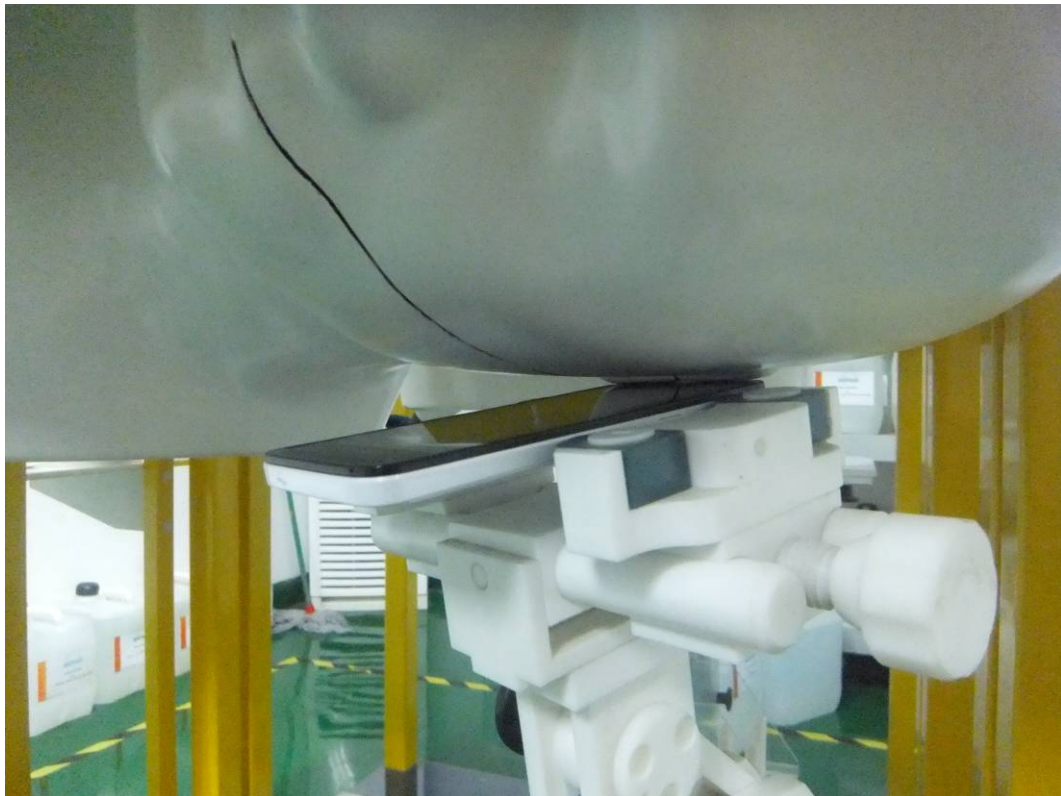
Right Head Tilt View



Left Head Touch View



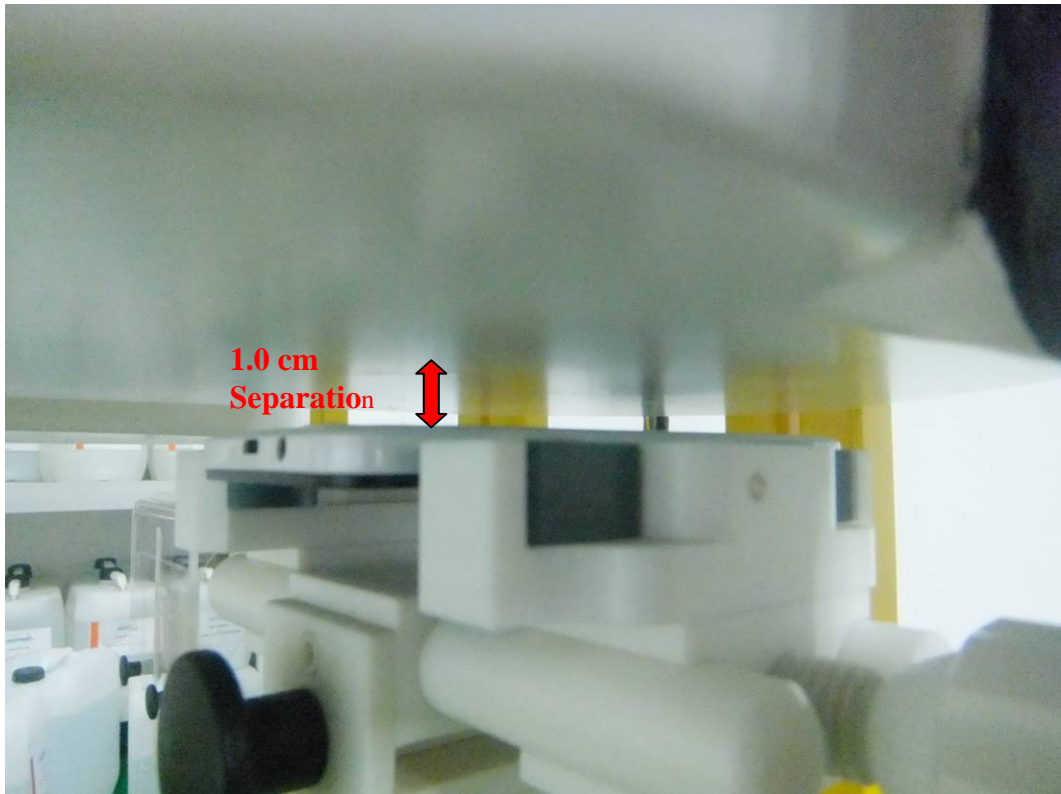
Left Head Tilt View



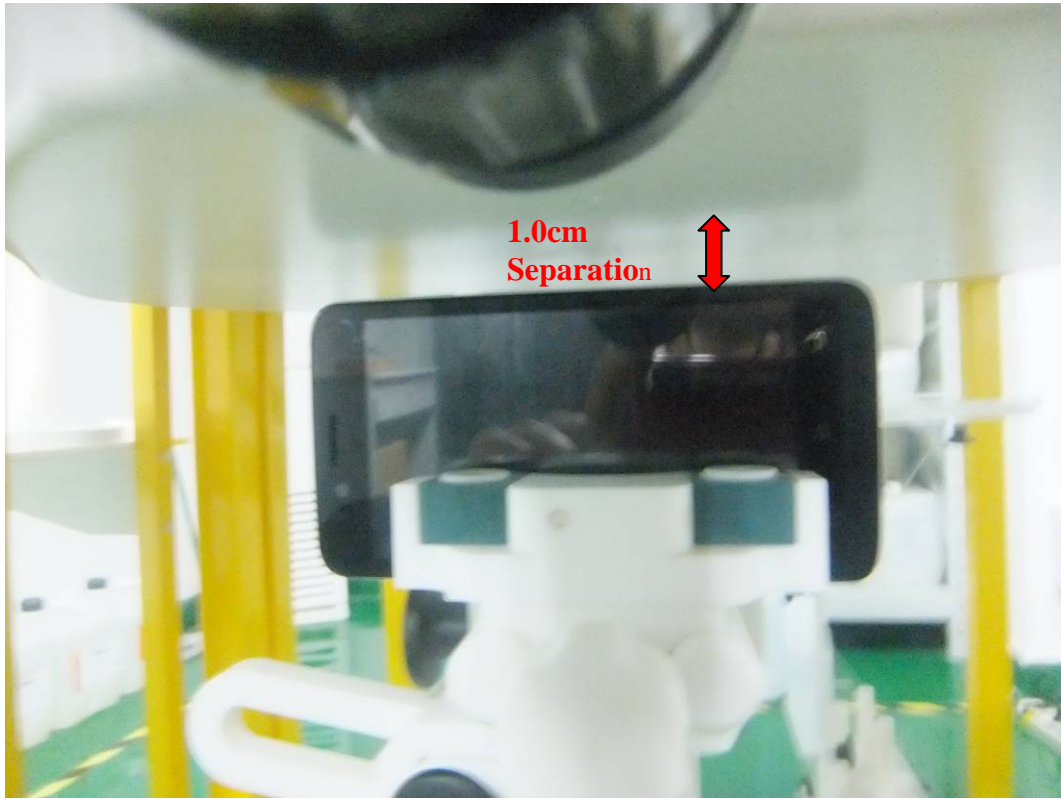
Body Setup Photo (LCD UP)



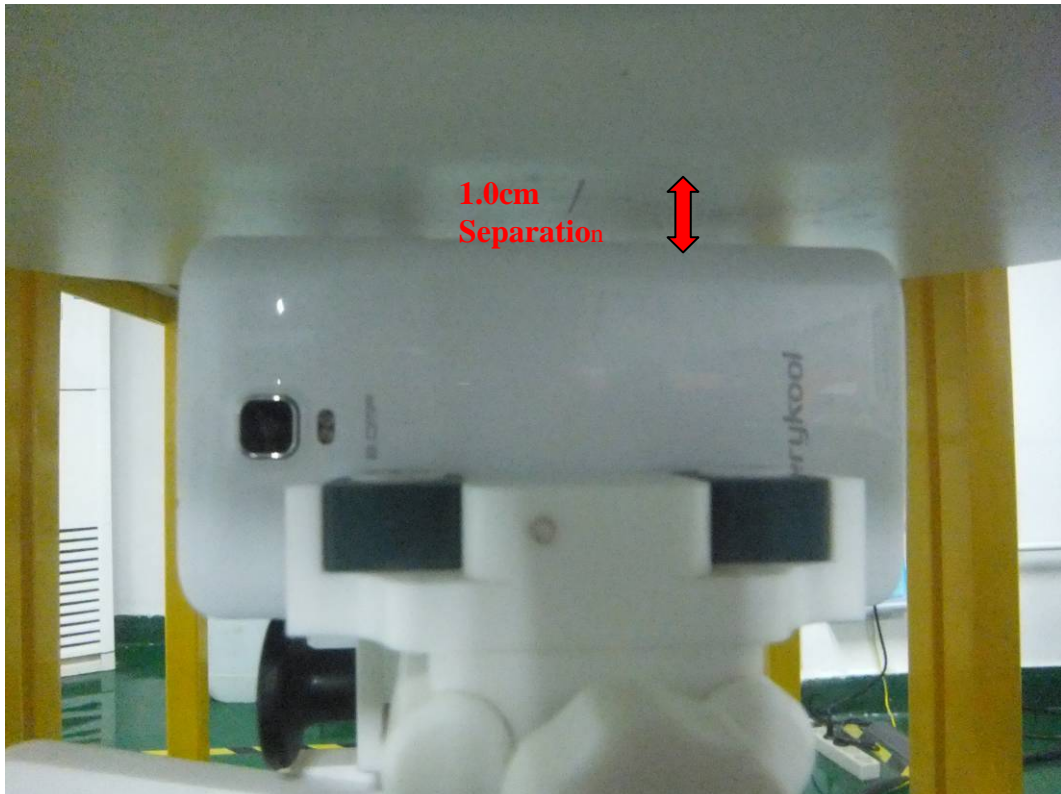
Body Setup Photo (LCD DOWN)



Body Setup Photo (RIGHT EDGE)



Body Setup Photo (LEFT EDGE)

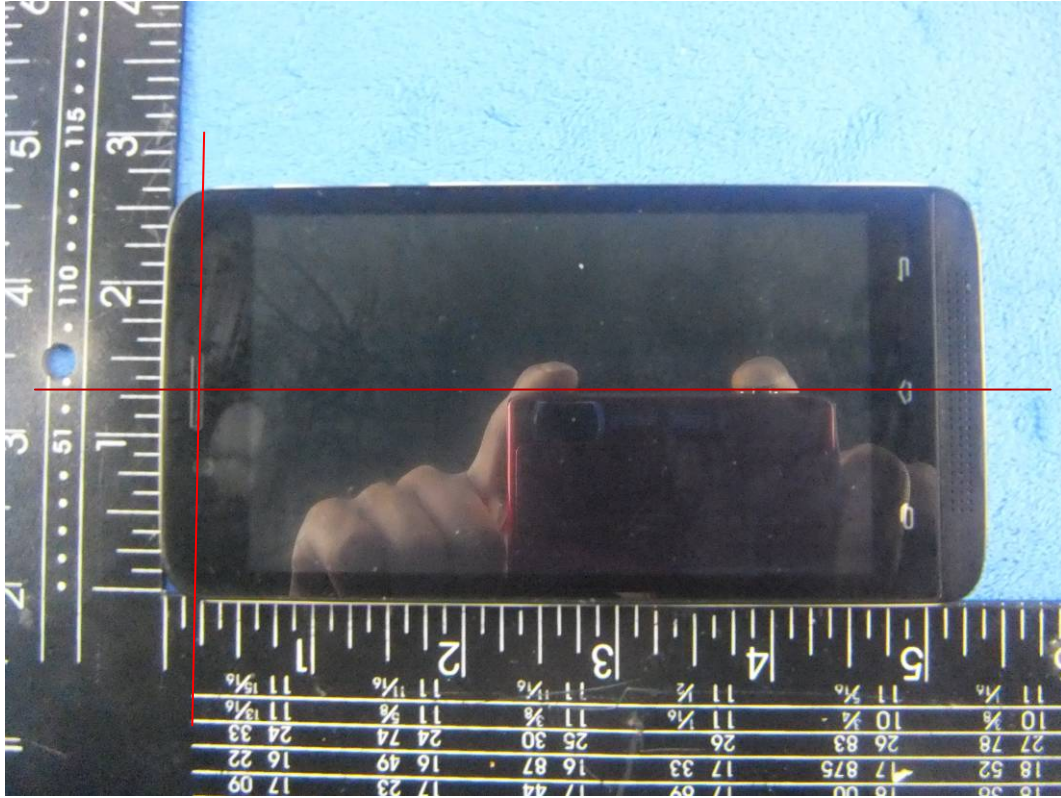


Body Setup Photo (BOTTOM EDGE)



Annex D EUT PHOTOGRAPHS

EUT-Front Side View



EUT-Back Side View

