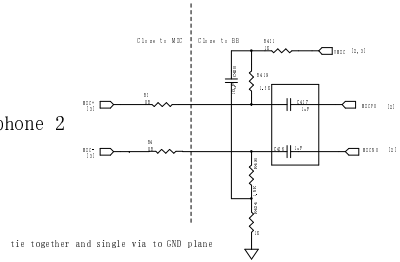
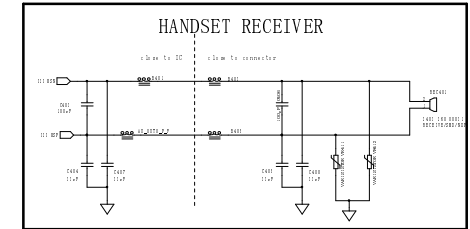
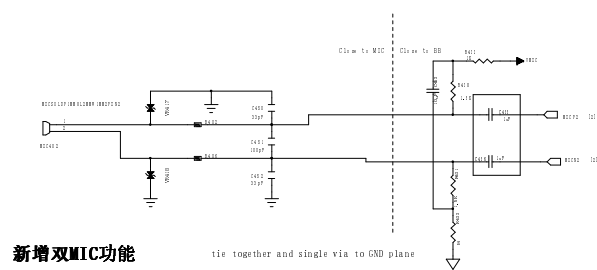


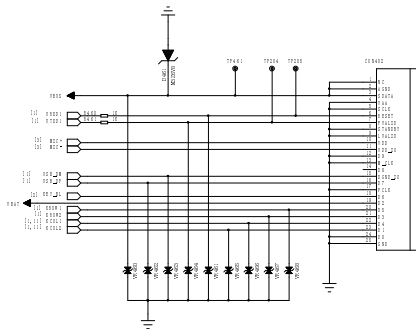
Handset Microphone 2



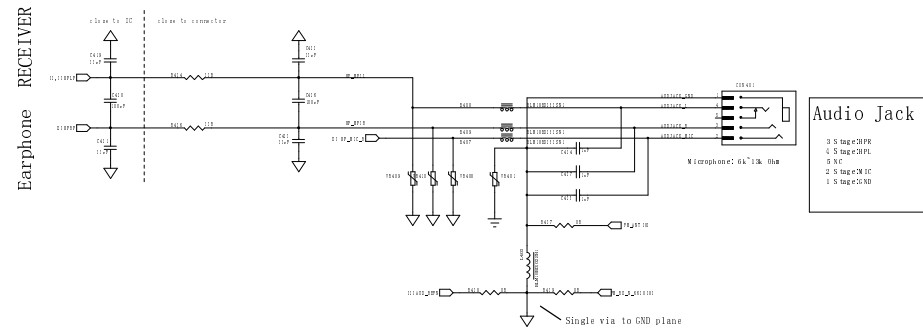
Handset Microphone 2



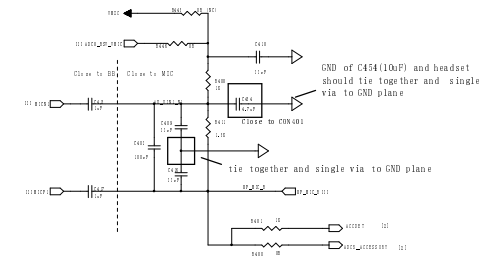
USB&CONNECTOR 460



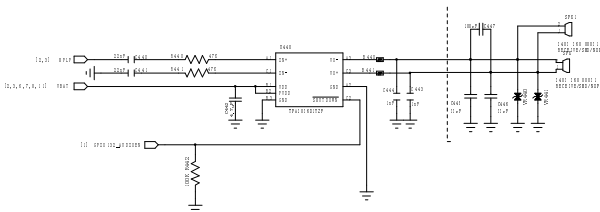
Earphone RECEIVER



Earphone MICPHONE

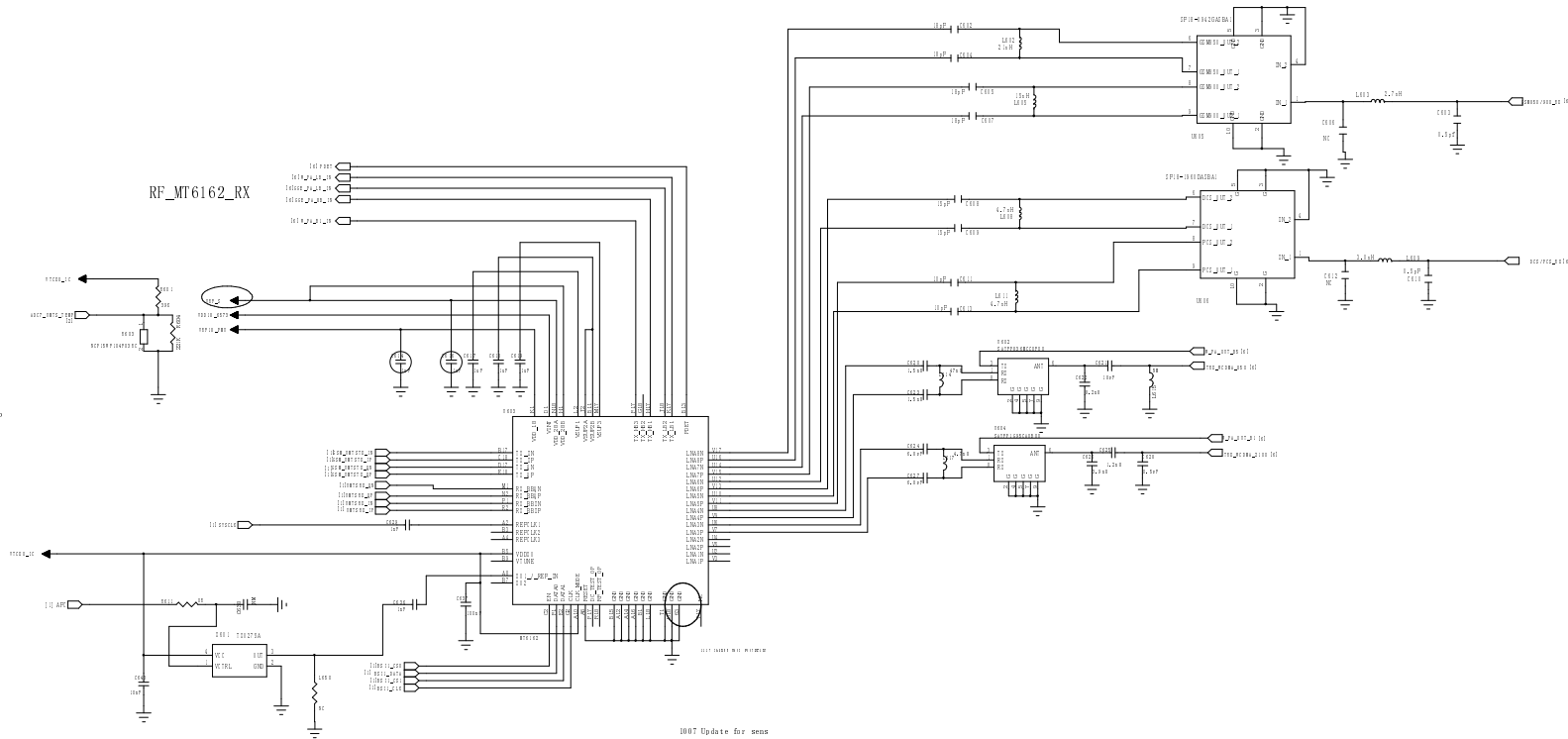


AUDIO PA 440



100MA

0 713
 VTCX0_PMI-VDDX0
 ADC7_UMTS_Temp-RF_TEMP
 VDD18_PMI-VINT
 VRF18_PMI-VDD_18
 BSI1_CS0-EN
 BSI1_DATA-DATA0
 BSI1_CS1-DATA1
 BSI1_CLK-CLK



- 1117 Update Note
1. Change UMS Footprint to MT6162/AQPM2/PN_333/80_27/6_236_2
 2. Change UMS GND_PIN from Pin1 to Pin3
 3. Add B2 Common Mode trap
 4. VDD_18 change to VRF_PMI
 5. Remove R615
 6. Add R616, R631, R632 0201 Short 0ohm for Current Measure
 7. C614, C616 from NH change to 1uF
 8. VINT in RF change to VINT_RF, add UMS 5 Ohm
 9. VTCX0_PMI add L20

- 1007 Update for sens
1. B8
 C636 from 8.2nH to 5.6nH
 2. B2 use B795C (430)
 C642 from 8.2pF to 6.8pF,
 L821 from 5.6nH to 6.8nH, C661 from 3.6nH to 15nH
 3. B1
 C624 and C627 from 8.2pF to 6.8pF, C625 from 1.2nH to 1.1nH
 4. DCS
 C608, C609 from 3pF to 3pF

0713 Update Res Name
 ADIG_20H5_POWER -GGE_PA_VDET
 EDGE_BUDG -GGE_PA_BUDG
 ADIG_20H5_POWER -GGE_PA_VDET
 VAMP -GGE_PA_VAMP
 DANDSW -GGE_PA_DS
 PAEN -GGE_PA_ENABLE

 VBI -V_PA_VBIEN
 VBI -V_PA_VBIEN
 V_PA_EN -V_PA_EN
 V_PA_EN -V_PA_EN
 V_PA_EN -V_PA_EN
 V_PA_EN -V_PA_EN

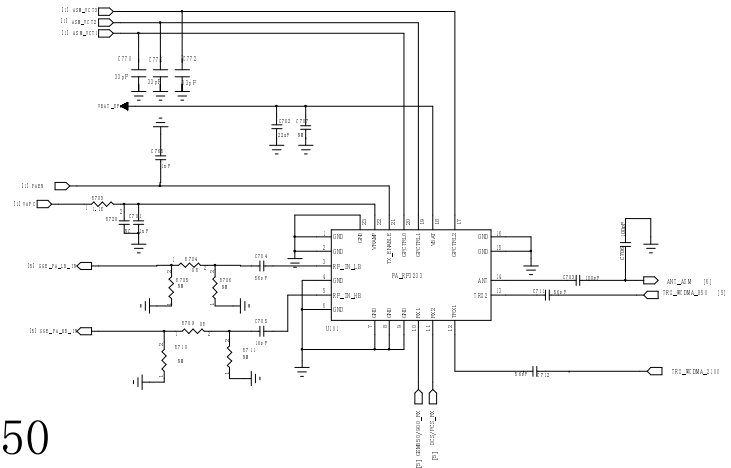
ASM Control Truth Table

	TX_EN	Ver3	Ver2	Ver1
(TRX1)W_Band2/5	L	H	H	
(TRX2)W_Band4	L	L	H	
EX1_300/850	L	H	L	L
EX2_300/1800	L	L	H	L
(TX_1)GSM_LB	H	L	H	L
(TX_2)GSM_LB	H	L	H	H
E_TX1_300/850	H	L	L	L
E_TX2_300/1800	H	L	L	H

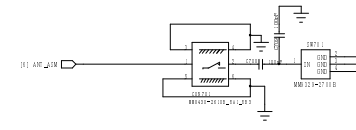
RF_TX_ASM

1109 Update List
 R7M3 change to 1.1K, C7M1 change to INF
 for RC filter

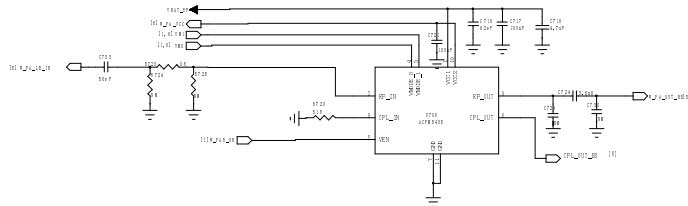
GSM_PA



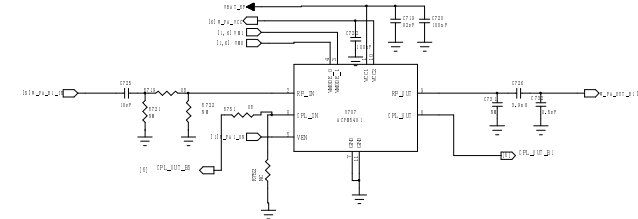
ANT



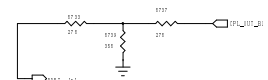
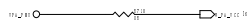
WCDMA_850



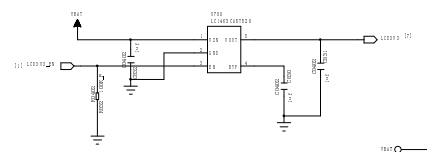
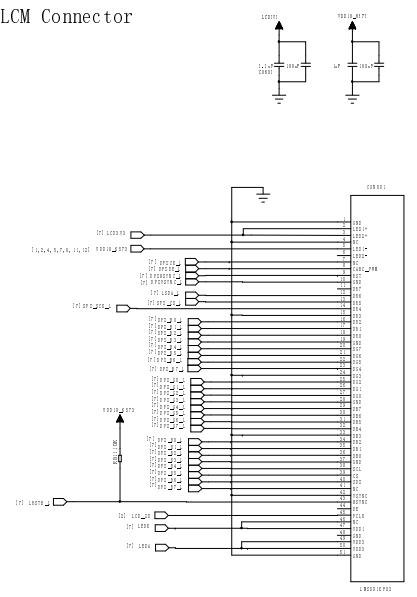
WCDMA_2100



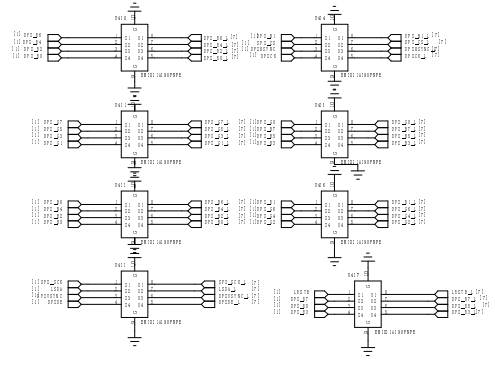
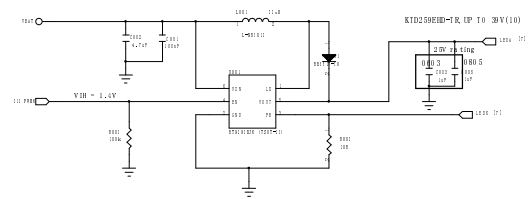
1117 Update
 1. YBAT in BF change to YBAT_0F, add 0805 0ohm



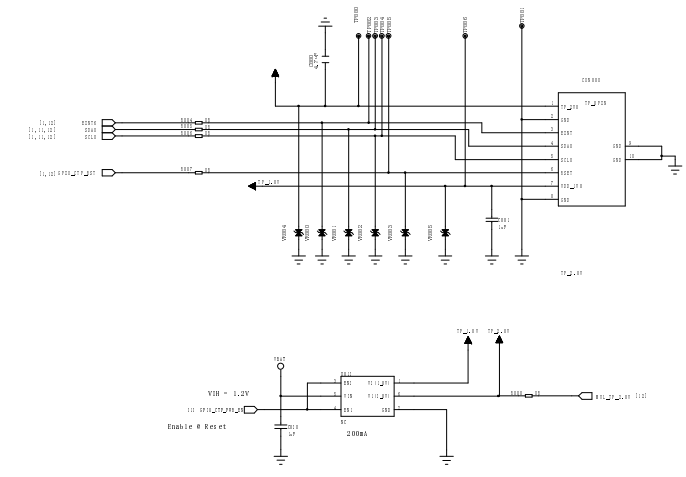
5. 2WVGA-43
LCM Connector



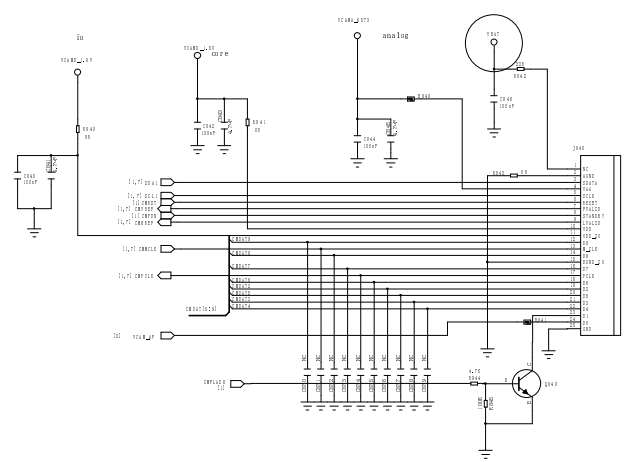
BACKLIGHT DRIVER
800



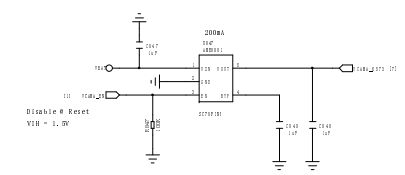
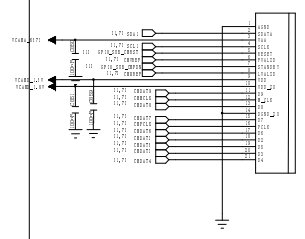
Capacitive Touch Panel
880



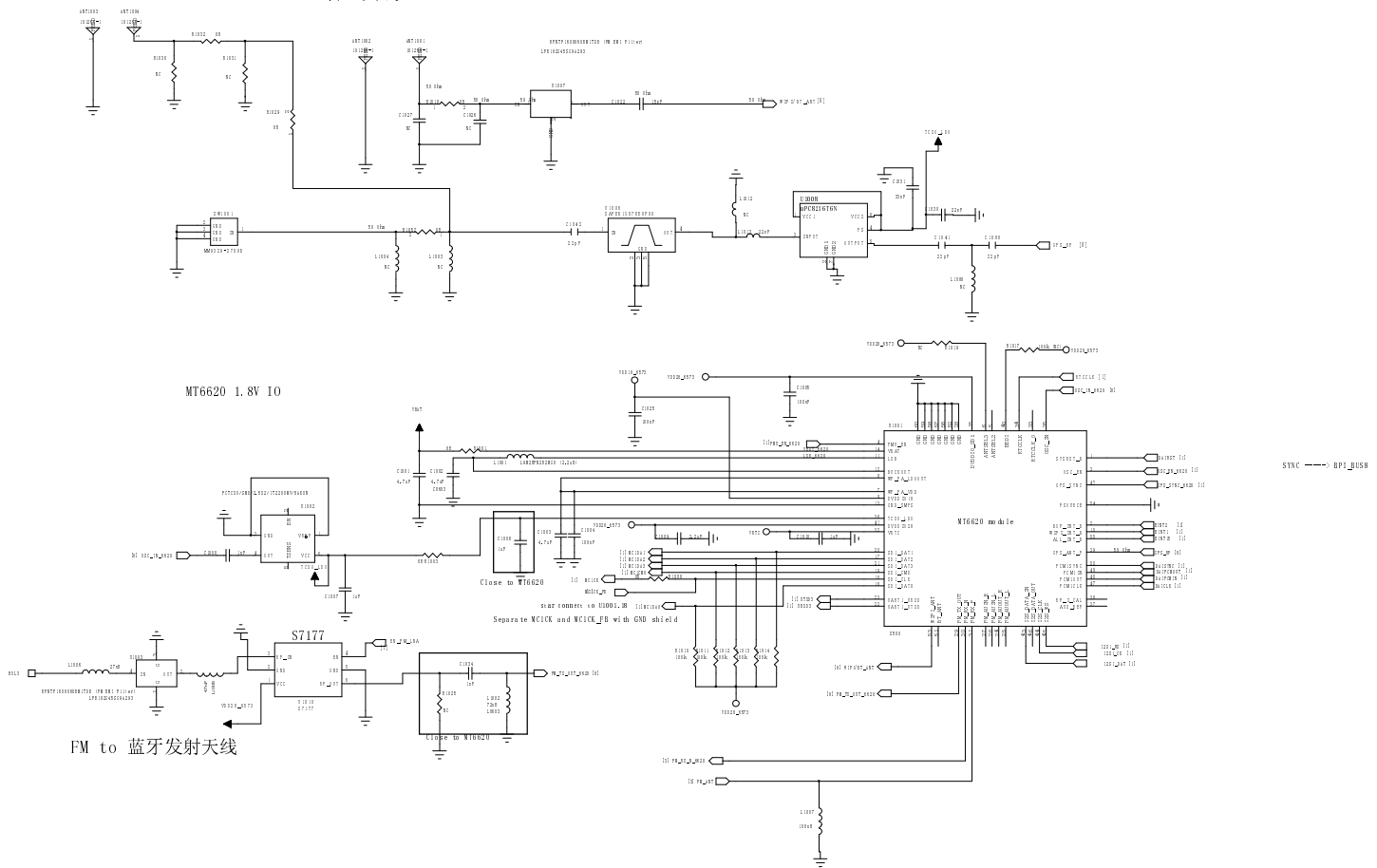
Main Camera
840

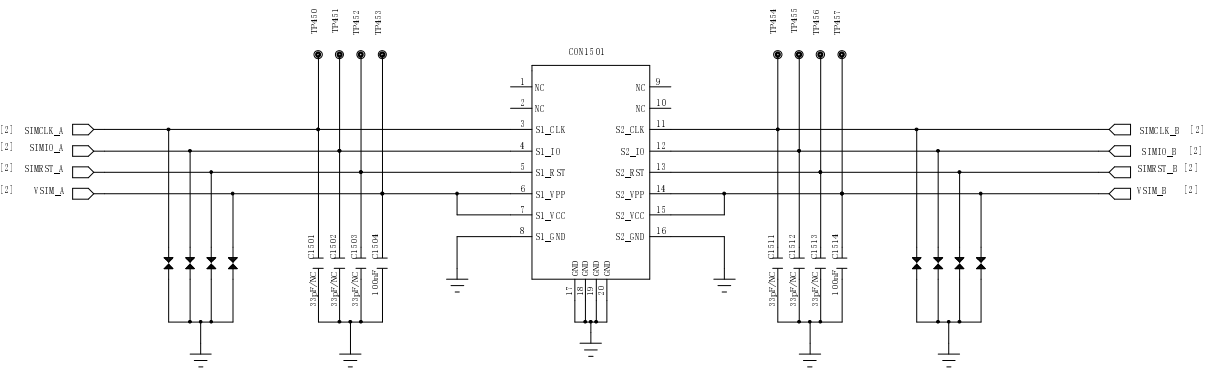


Sub Camera

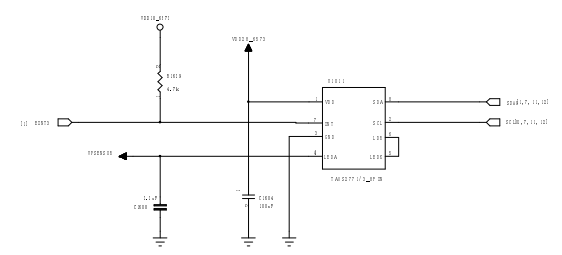
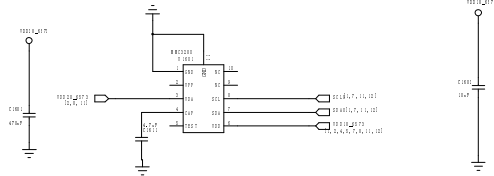


BT&WIFI 二合一天线

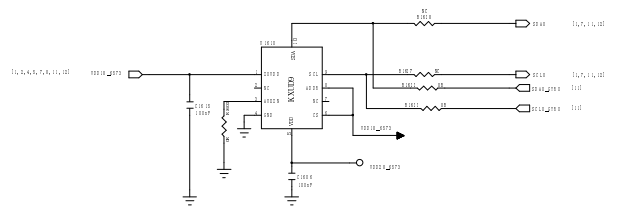




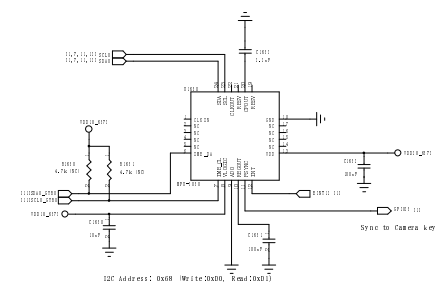
M-Sensor 1600



G Sensor 1610



Gyro Sensor 1650



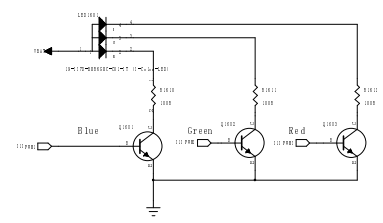
Power Key

DO NOT put pull-up resistor on PWRKEY

KEY 1620



Indicator LED



VOL_UP

VOL_DWON

