

Annex B.ii. Photograph: EUT Internal Photo

Cover Off - Top View 1



Cover Off - Top View 2



Test Report No.	17070833-FCC-R2
Page	52 of 63

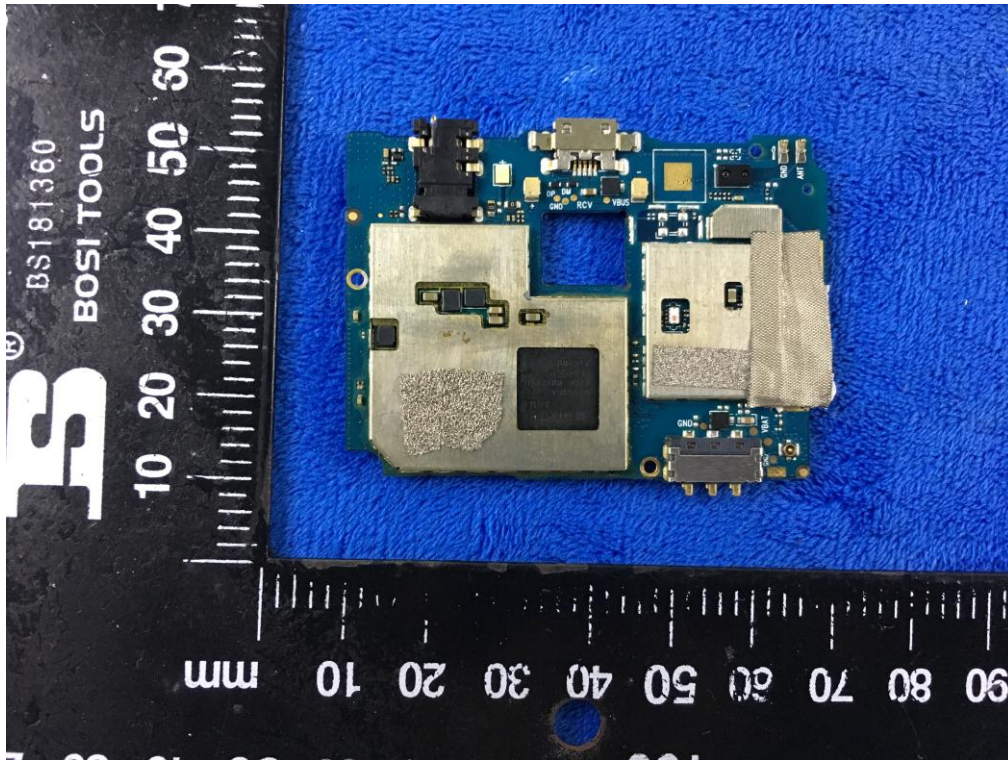
Battery - Front View



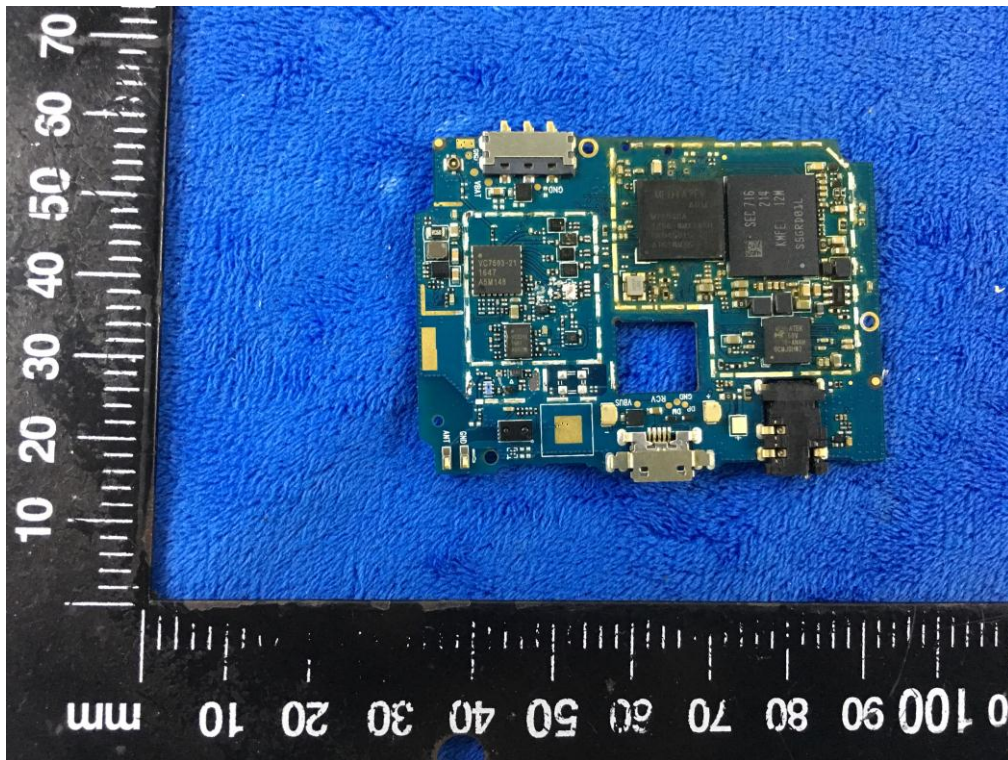
Battery - Rear View



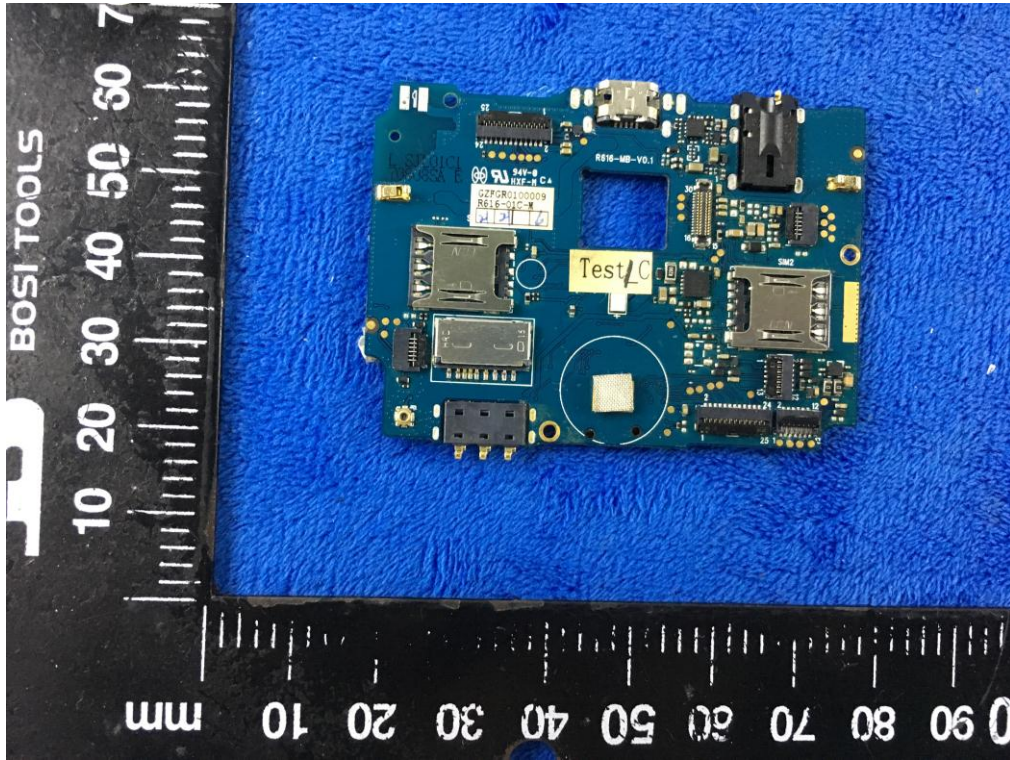
Mainboard with Shielding - Front View



Mainboard without Shielding - Front View



Mainboard- Rear View



LCD - Front View



Test Report No.	17070833-FCC-R2
Page	55 of 63

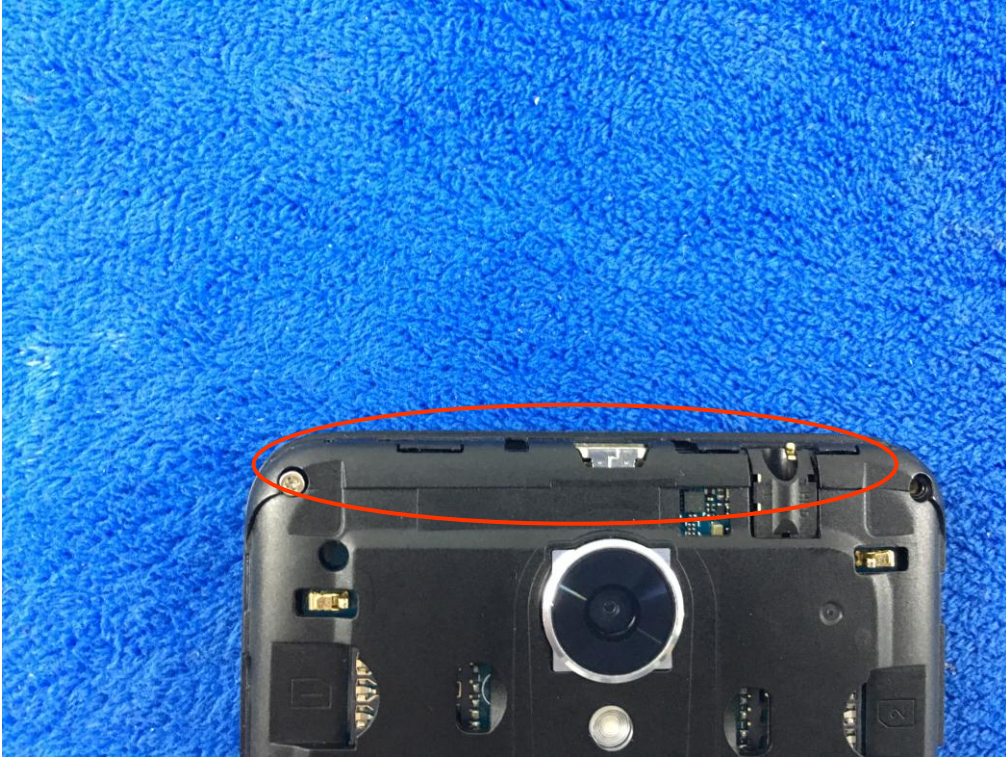
LCD – Rear View



GSM/PCS/UMTS-FDD Antenna View



WiFi/BT/BLE/GPS - Antenna View



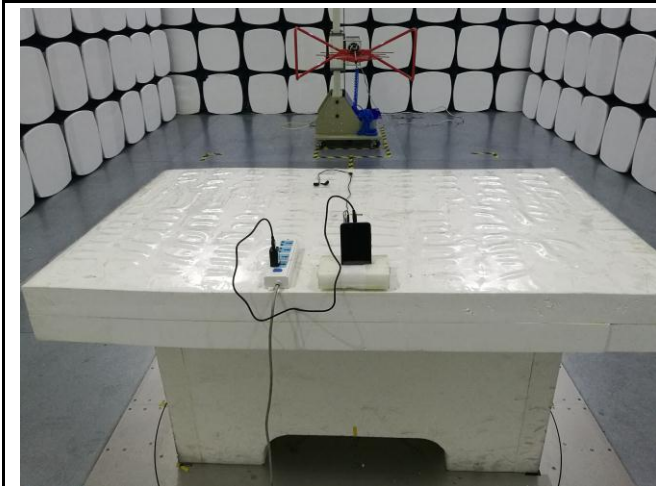
Annex B.iii. Photograph: Test Setup Photo



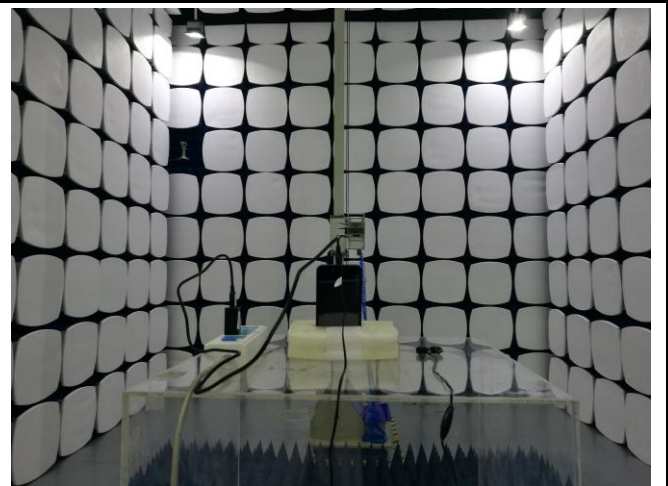
Conducted Emissions Test Setup Front View



Conducted Emissions Test Setup Side View



Radiated Spurious Emissions Test Setup Below 1GHz

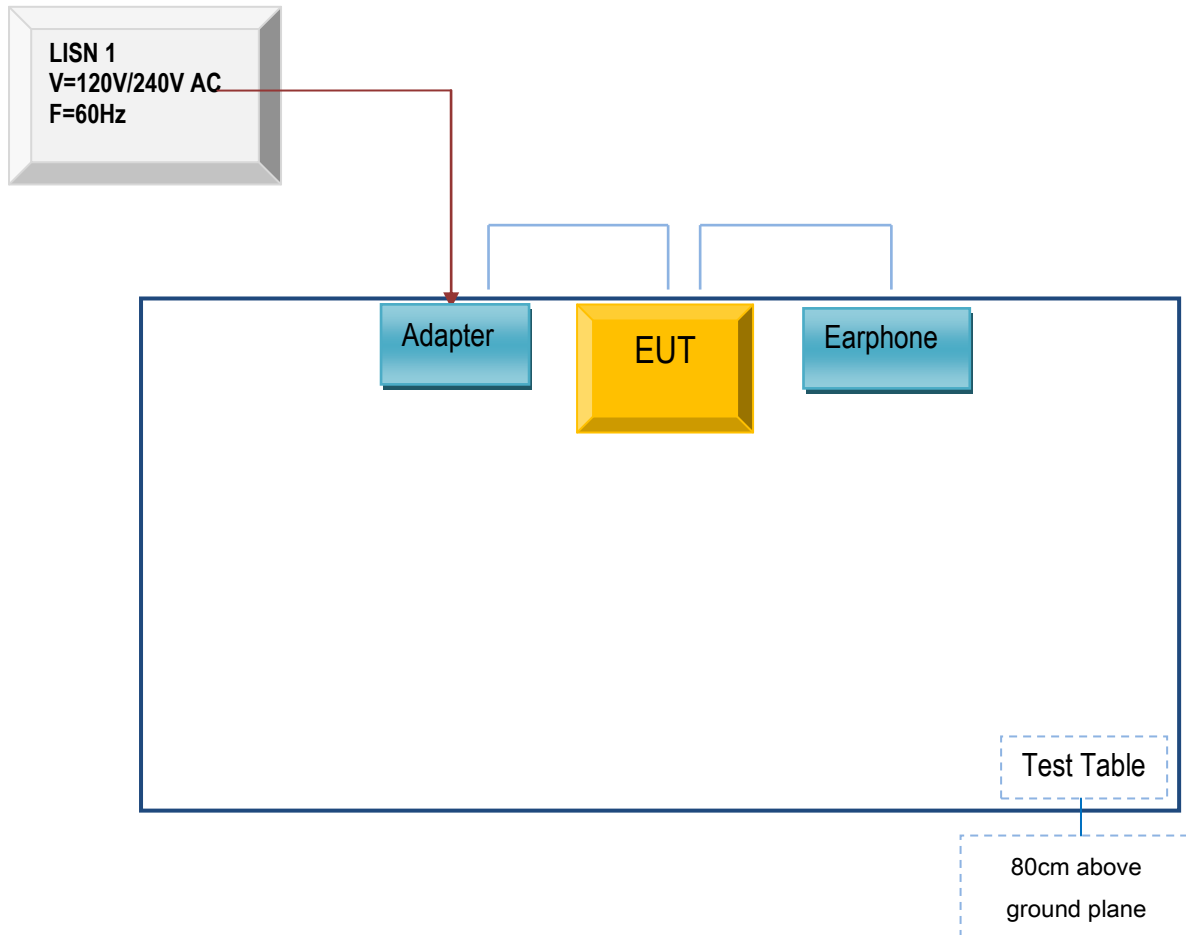


Radiated Spurious Emissions Test Setup Above
1GHz

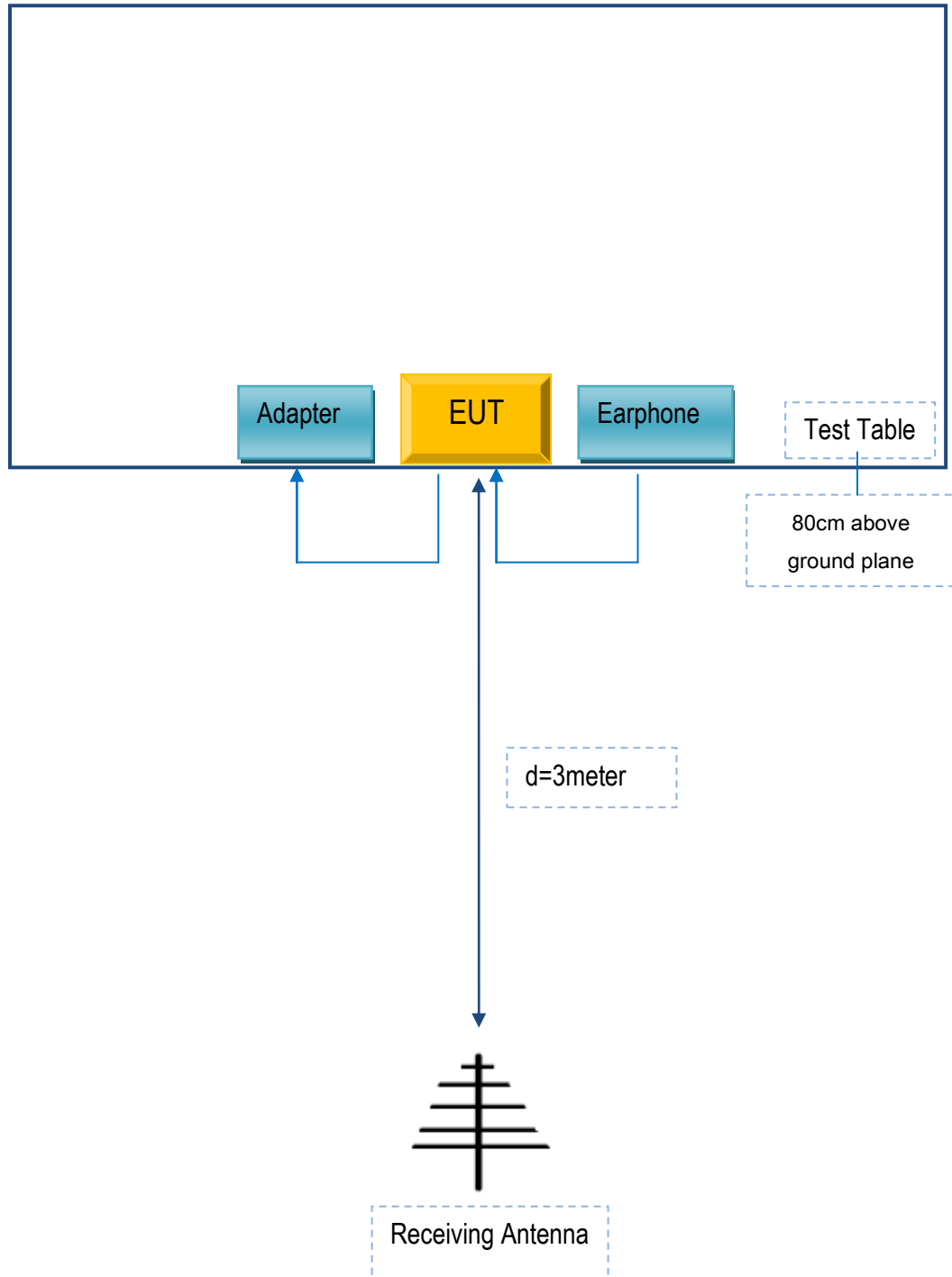
Annex C. TEST SETUP AND SUPPORTING EQUIPMENT

Annex C.ii. TEST SET UP BLOCK

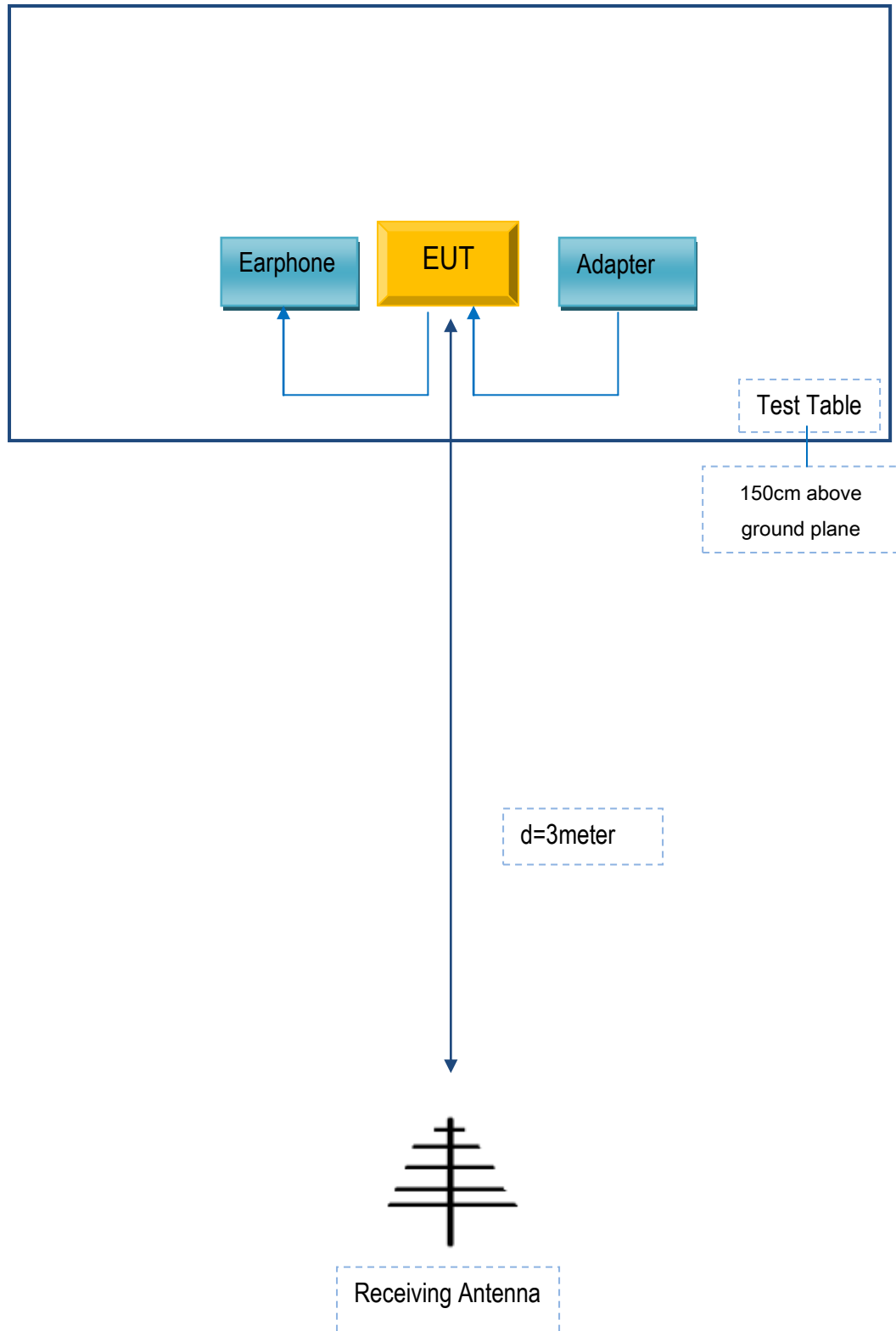
Block Configuration Diagram for AC Line Conducted Emissions



Block Configuration Diagram for Radiated Emissions (Below 1GHz) .



Block Configuration Diagram for Radiated Emissions (Above 1GHz) .



Annex C. ii. SUPPORTING EQUIPMENT DESCRIPTION

The following is a description of supporting equipment and details of cables used with the EUT.

Supporting Equipment:

Manufacturer	Equipment Description	Model	Serial No
Verykool USA Inc	Adapter	s5205	N/A
Verykool USA Inc	Earphone	s5205	N/A

Supporting Cable:

Cable type	Shield Type	Ferrite Core	Length	Serial No
USB Cable	Un-shielding	No	0.8m	N/A

Test Report No.	17070833-FCC-R2
Page	62 of 63

Annex D. User Manual / Block Diagram / Schematics / Partlist

Please see the attachment

Annex E. DECLARATION OF SIMILARITY

Verykool USA Inc

To: 775 Montague Expressway Milpitas, CA 95035, USA

Declaration Letter

Dear Sir,

For our business issue and marketing requirement, we would like to list serial model numbers on The FCC reports, as following:

Model No.: s5205
Serial Model No: s5204

We declare that : s5205, s5204 all models the same PCB and Appearance shape, accessories ,the difference of these is listed as below:

Main Model No	Serial Model No	Difference
s5205	s5204	The only difference between s5205 and s5204 is the front camera change from 8+8 (5+5AFHW) to 5+8 (2+5AFHW)

Thank you!

Sincerely,

Client's signature :



Client's name: Sunny Choi
Title : Product Director
Date: 9/1/2017
Contact information : Verykool USA Inc
Address : 3636 Nobel Drive, Suite 325, San Diego, California 92122 United States