

Verykool USA Inc.

Mobile Phone

Main Model: s505

Serial Model: N/A

June 18 , 2014




Report No.: 14070214-FCC-R4

(This report supersedes none)



Modifications made to the product : None

This Test Report is Issued Under the Authority of:

		
Wiky Jam Compliance Engineer	Alex Liu Technical Manager	

This test report may be reproduced in full only.
Test result presented in this test report is applicable to the representative sample only.

RF Test Report

To: FCC Part 15.247: 2013, ANSI C63.4: 2009

SIEMIC, INC.
Assessing global markets



Laboratory Introduction

SIEMIC, headquartered in the heart of Silicon Valley, with superior facilities in US and Asia, is one of the leading independent testing and certification facilities providing customers with one-stop shop services for Compliance Testing and Global Certifications.



In addition to [testing](#) and [certification](#), SIEMIC provides initial design reviews and [compliance management](#) through out a project. Our extensive experience with [China](#), [Asia Pacific](#), [North America](#), [European](#), and [international](#) compliance requirements, assures the fastest, most cost effective way to attain regulatory compliance for the [global markets](#).

SIEMIC (Shenzhen - China) Laboratories Accreditations for Conformity Assessment

Country/Region	Scope
USA	EMC , RF/Wireless , Telecom
Canada	EMC, RF/Wireless , Telecom
Taiwan	EMC, RF, Telecom , Safety
Hong Kong	RF/Wireless ,Telecom
Australia	EMC, RF, Telecom , Safety
Korea	EMI, EMS, RF , Telecom, Safety
Japan	EMI, RF/Wireless, Telecom
Singapore	EMC , RF , Telecom
Europe	EMC, RF, Telecom , Safety



SIEMIC, INC.

Accessing global markets

Title: RF Test Report for Mobile Phone
Main Model: s505
Serial Model: N/A
To: FCC Part 15.247: 2013, ANSI C63.4: 2009

Report No.: 14070214-FCC-R4
Issue Date: June 18 , 2014
Page: 3 of 52
www.siemic.com
www.siemic.com.cn

This page has been left blank intentionally.

CONTENTS

1	EXECUTIVE SUMMARY & EUT INFORMATION	5
2	TECHNICAL DETAILS	6
3	MODIFICATION.....	7
4	TEST SUMMARY.....	8
5	MEASUREMENTS, EXAMINATION AND DERIVED RESULTS	9
	ANNEX A. TEST INSTRUMENT & METHOD	30
	ANNEX B. EUT AND TEST SETUP PHOTOGRAPHS	35
	ANNEX C. TEST SETUP AND SUPPORTING EQUIPMENT.....	47
	ANNEX D. USER MANUAL / BLOCK DIAGRAM / SCHEMATICS / PART LIST	51
	ANNEX E. DECLARATION OF SI.....	52

1 Executive Summary & EUT information

The purpose of this test programme was to demonstrate compliance of the Verykool USA Inc., Mobile Phone and model: s505 against the current Stipulated Standards. The Mobile Phone has demonstrated compliance with the FCC Part 15.247: 2013, ANSI C63.4: 2009.

EUT Information

EUT Description : Mobile Phone

Main Model : s505

Serial Model : N/A

Antenna Gain :
 GSM850/ UMTS-FDD Band V: -3.4 dBi
 PCS1900/UMTS-FDD Band II: -2.5 dBi
 Bluetooth/BLE/ WIFI: -2.6 dBi
 GPS: -2.9 dBi

Input Power : **Battery:**
 Spec: 3.8V 2000mAh
 Limited charger voltage: 4.35V
Adapter:
 Model: HJ-050100-US
 Input: AC 100-240V; 50/60Hz 0.15A
 Output: DC 5.0V; 1000mA

Classification Per Stipulated Test Standard : FCC Part 15.247: 2013, ANSI C63.4: 2009

2 TECHNICAL DETAILS

Purpose	Compliance testing of Mobile Phone with stipulated standard
Applicant / Client	Verykool USA Inc. 3636 Nobel Drive, Suite 325, San Diego, CA 92122 USA
Manufacturer	SHENZHEN KONKA TELECOMMUNICATIONS TECHNOLOGY CO., LTD No. 9008, Shennan Avenue, Overseas Chinese Town, Shenzhen, China
Laboratory performing the tests	SIEMIC (Shenzhen - China) Laboratories Zone A, Floor 1, Building 2, Wan Ye Long Technology Park, South Side of Zhoushi Road, Bao'an District, Shenzhen, Guangdong, China Tel: +86-0755-2601 4629 / 2601 4953 Fax: +86-0755-2601 4953-810 Email: China@siemic.com.cn
Test report reference number	14070214-FCC-R4
Date EUT received	May 06, 2014
Standard applied	FCC Part 15.247: 2013, ANSI C63.4: 2009
Dates of test (from – to)	May 09 to June 17, 2014
No of Units :	#1
Equipment Category :	DTS
Trade Name :	Verykool
RF Operating Frequency (ies)	GSM850 TX : 824.2 ~ 848.8 MHz; RX : 869.2 ~ 893.8 MHz PCS1900 TX : 1850.2 ~ 1909.8 MHz; RX : 1930.2 ~ 1989.8 MHz UMTS-FDD Band V TX : 826.4 ~ 846.6 MHz; RX : 871.4 ~ 891.6 MHz UMTS-FDD Band II TX : 1852.4 ~ 1907.6 MHz; RX : 1932.4 ~ 1987.6 MHz 802.11b/g/n: 2412-2462 MHz Bluetooth& BLE: 2402-2480 MHz
Number of Channels	299CH (PCS1900) and 124CH (GSM850) UMTS-FDD Band V : 102CH UMTS-FDD Band II : 277CH Bluetooth: 79CH 802.11b/g/n: 11CH BLE: 40CH
Modulation	GSM /PCS: GMSK UMTS-FDD: QPSK 802.11b/g/n: DSSS/OFDM Bluetooth: GFSK& $\pi/4$ DQPSK&8DPSK BLE: GFSK
GPRS Multi-slot class	8/10/12
FCC ID	WA6S505



SIEMIC, Inc.

Accessing global markets

Title: RF Test Report for Mobile Phone
Main Model: s505
Serial Model: N/A
To: FCC Part 15.247: 2013, ANSI C63.4: 2009

Report No.: 14070214-FCC-R4
Issue Date: June 18 , 2014
Page: 7 of 52
www.siemic.com
www.siemic.com.cn

3 MODIFICATION

NONE

4 TEST SUMMARY

The product was tested in accordance with the following specifications.
 All testing has been performed according to below product classification:

Test Results Summary

FCC Rules	Description of Test	Result
§15.247 (i), §2.1091	RF Exposure	Compliance
§15.203	Antenna Requirement	Compliance
§15.247 (a)(2)	DTS (6 dB) CHANNEL BANDWIDTH	Compliance
§15.247(b)(3)	Conducted Maximum Output Power	Compliance
§15.247(e)	Power Spectral Density	Compliance
§15.247(d)	Band-Edge	Compliance
§15.207 (a),	AC Power Line Conducted Emissions	Compliance
§15.205, §15.209, §15.247(d)	Radiated Spurious Emissions & Unwanted Emissions into Restricted Frequency Bands	Compliance

5 MEASUREMENTS, EXAMINATION AND DERIVED RESULTS

5.1 §15.247 (i) and §2.1093 – RF Exposure

Standard Requirement:

According to §15.247 (i) and §1.1307(b)(1), systems operating under the provisions of this section shall be operated in a manner that ensures that the public is not exposed to radio frequency energy level in excess of the Commission’s guidelines.

The 1-g and 10-g SAR test exclusion thresholds for 100 MHz to 6 GHz at *test separation distances* ≤ 50 mm are determined by:

$$[(\text{max. power of channel, including tune-up tolerance, mW}) / (\text{min. test separation distance, mm})] \cdot [\sqrt{f_{\text{(GHz)}}}] \leq 3.0 \text{ for 1-g SAR and } \leq 7.5 \text{ for 10-g extremity SAR,}^{16} \text{ where}$$

- $f_{\text{(GHz)}}$ is the RF channel transmit frequency in GHz
- Power and distance are rounded to the nearest mW and mm before calculation¹⁷
- The result is rounded to one decimal place for comparison

The test exclusions are applicable only when the minimum *test separation distance* is ≤ 50 mm and for transmission frequencies between 100 MHz and 6 GHz. When the minimum *test separation distance* is < 5 mm, a distance of 5 mm is applied to determine SAR test exclusion.

Routine SAR evaluation refers to that specifically required by § 2.1093, using measurements or computer simulation. When routine SAR evaluation is not required, portable transmitters with output power greater than the applicable low threshold require SAR evaluation to qualify for TCB approval.

Two antennas are available for the EUT (GSM antenna, Bluetooth/BLE/WIFI antenna).
 The maximum average output power(turn-up power) in low channel of BLE is -3.67 dBm= 0.43mW
 The calculation results= $0.43 / 5 * \sqrt{2.402} = 0.13 < 3$

The maximum average output power(turn-up power) in middle channel of BLE is -3.17 dBm= 0.48 mW
 The calculation results= $0.48 / 5 * \sqrt{2.440} = 0.15 < 3$

The maximum average output power(turn-up power) in high channel of BLE is -3.33 dBm= 0.46 mW
 The calculation results= $0.46 / 5 * \sqrt{2.480} = 0.14 < 3$

According to KDB 447498, no stand-alone required for BLE antenna, and no simultaneous SAR measurement is required , please refer to SAR report.

Test Result: Pass

5.2 §15.203 - ANTENNA REQUIREMENT

Applicable Standard

According to § 15.203, an intentional radiator shall be designed to ensure that no antenna other than that furnished by the responsible party shall be used with the device. The use of a permanently attached antenna or of an antenna that uses a unique coupling to the intentional radiator shall be considered sufficient to comply with the provisions of this section. The manufacturer may design the unit so that a broken antenna can be replaced by the user, but the user of a standard antenna jack or electrical connector is prohibited. The structure and application of the EUT were analyzed to determine compliance with section §15.203 of the rules. §15.203 state that the subject device must meet the following criteria:

- a. Antenna must be permanently attached to the unit.
- b. Antenna must use a unique type of connector to attach to the EUT.

Unit must be professionally installed, and installer shall be responsible for verifying that the correct antenna is employed with the unit.

And according to FCC 47 CFR section 15.247 (b), if the transmitting antennas of directional gain greater than 6dBi are used, the power shall be reduced by the amount in dB that the directional gain of the antenna exceeds 6 dBi.

Antenna Connector Construction

The EUT has 2 antennas: a PIFA antenna for WIFI/Bluetooth/BLE, the gain is -2.6 dBi for WIFI/ Bluetooth/BLE.
a PIFA antenna for GSM and UMTS, the gain is -3.4 dBi for GSM850/ PCS1900
and -2.5 dBi for UMTS-FDD BandV/UMTS-FDD Band II .

which in accordance to section 15.203, please refer to the internal photos.

Test Result: Pass

5.3 §15.247(a) (2) –DTS (6 dB) CHANNEL BANDWIDTH

1. Conducted Measurement
EUT was set for low, mid, high channel with modulated mode and highest RF output power. The spectrum analyzer was connected to the antenna terminal.
2. Environmental Conditions

Temperature	21°C
Relative Humidity	58%
Atmospheric Pressure	1010mbar
3. Conducted Emissions Measurement Uncertainty
All test measurements carried out are traceable to national standards. The uncertainty of the measurement at a confidence level of approximately 95% (in the case where distributions are normal), with a coverage factor of 2, in the range 30MHz – 40GHz is ±1.5dB.
4. Test date : May 09, 2014
Tested By : Wiky Jam

Requirement(s): The minimum 6 dB bandwidth of a DTS transmission shall be at least 500 kHz. Within this document, this bandwidth is referred to as the DTS bandwidth. The procedures provided herein for measuring the maximum peak conducted output power assume the use of the DTS bandwidth.

Procedures:

1. Set RBW = 100 kHz.
2. Set the video bandwidth (VBW) ≥ 3 x RBW.
3. Detector = Peak.
4. Trace mode = max hold.
5. Sweep = auto couple.
6. Allow the trace to stabilize.
7. Measure the maximum width of the emission that is constrained by the frequencies associated with the two outermost amplitude points (upper and lower frequencies) that are attenuated by 6 dB relative to the maximum level measured in the fundamental emission.

Test Result: Pass.

Please refer to the following tables and plots.

Channel	Channel Frequency (MHz)	Measured 6dB Bandwidth (kHz)	FCC Part 15.247 Limit (kHz)
Low	2402	725	> 500
Middle	2440	725	> 500
High	2480	730	> 500

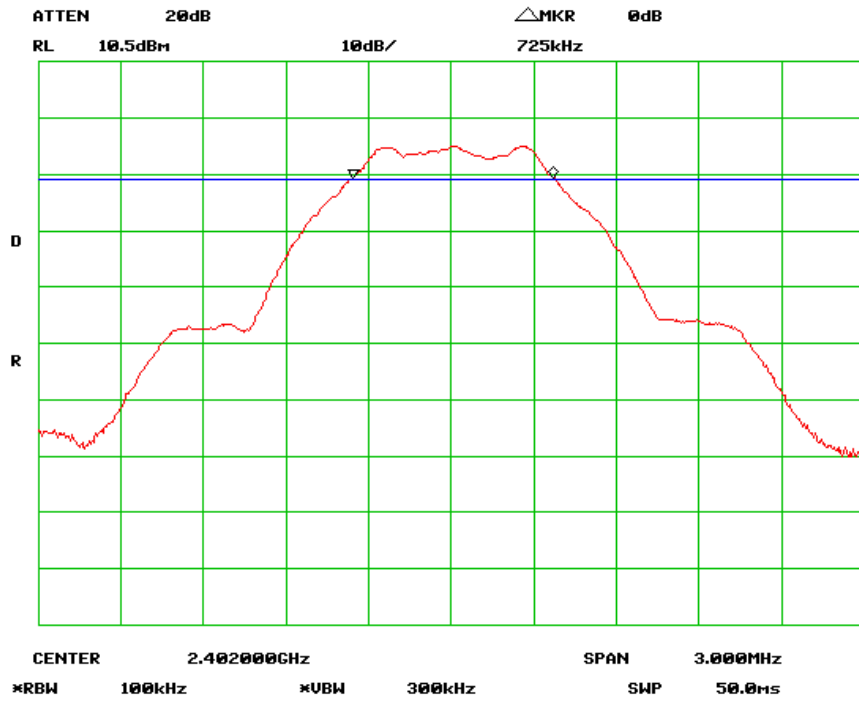


SIEMIC, INC.

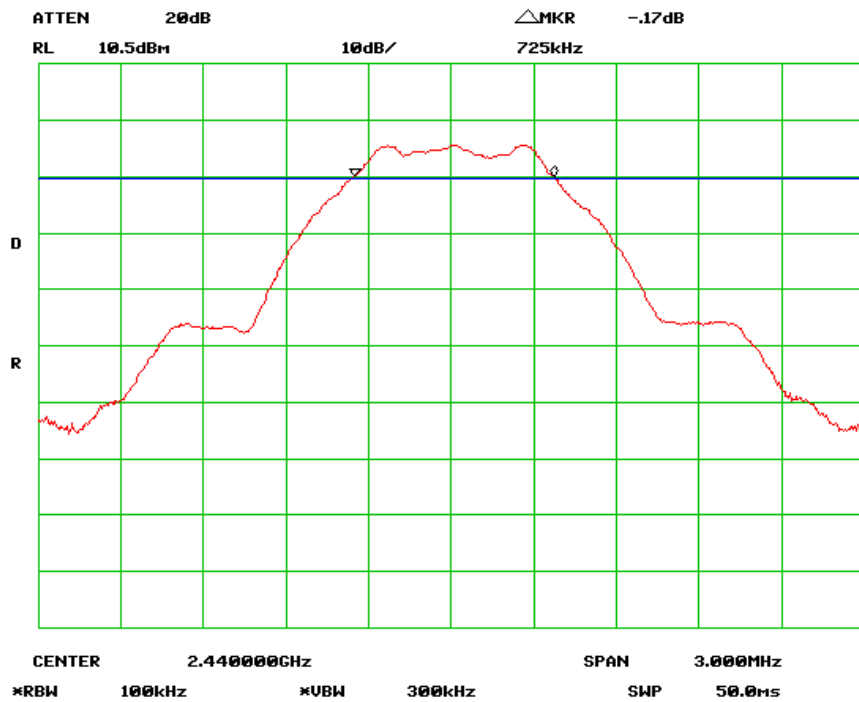
Accessing global markets

Title: RF Test Report for Mobile Phone
Main Model: s505
Serial Model: N/A
To: FCC Part 15.247: 2013, ANSI C63.4: 2009

Report No.: 14070214-FCC-R4
Issue Date: June 18, 2014
Page: 12 of 52
www.siemic.com
www.siemic.com.cn



6DB-2402



6DB-2440

5.4 §15.247(b) (3) - Conducted Maximum Output Power

1. **Conducted Measurement**
EUT was set for low, mid, high channel with modulated mode and highest RF output power. The spectrum analyzer was connected to the antenna terminal.
2. **Conducted Emissions Measurement Uncertainty**
All test measurements carried out are traceable to national standards. The uncertainty of the measurement at a confidence level of approximately 95% (in the case where distributions are normal), with a coverage factor of 2, in the range 30MHz – 40GHz is ± 1.5 dB.
3. **Environmental Conditions**

Temperature	26°C
Relative Humidity	54%
Atmospheric Pressure	1015mbar
4. Test date : May 14, 2014
Tested By : Wiky Jam

Standard Requirement: One of the following procedures may be used to determine the maximum peak conducted output power of a DTS EUT.

Procedures:

RBW \geq DTS bandwidth:

This procedure shall be used when the measurement instrument has available a resolution bandwidth that is greater than the DTS bandwidth.

1. Set the RBW \geq DTS bandwidth.
2. Set VBW ≥ 3 RBW.
3. Set span $\geq 3 \times$ RBW
4. Sweep time = auto couple.
5. Detector = peak.
6. Trace mode = max hold.
7. Allow trace to fully stabilize.
8. Use peak marker function to determine the peak amplitude level.

Test Result: Pass.

Please refer to the following tables and plots.

The Maximum peak conducted output power:

Channel	Channel Frequency (MHz)	PK Output Power (dBm)	Limit (dBm)
Low	2402	-3.67	30
Middle	2440	-3.17	30
High	2480	-3.33	30

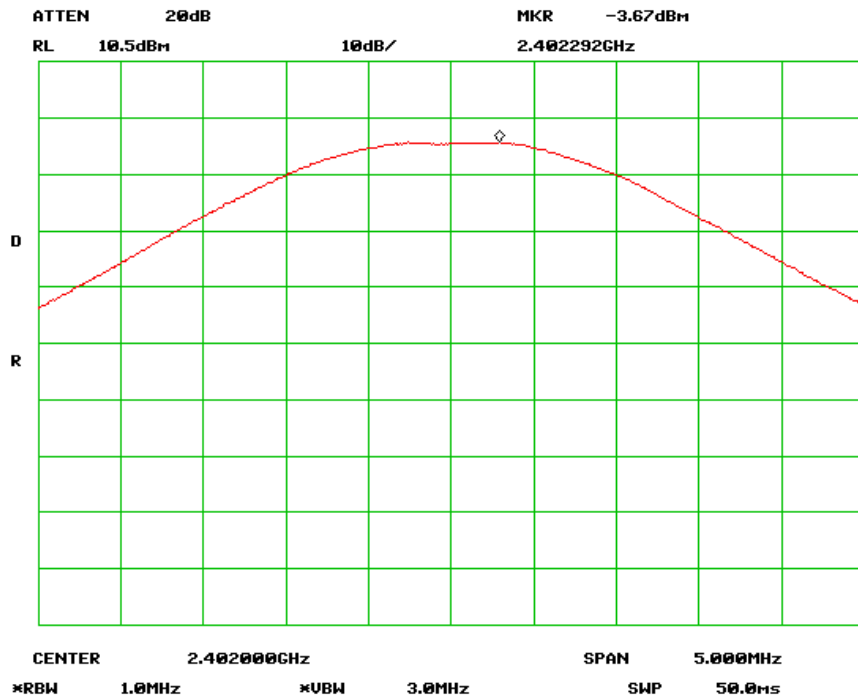


SIEMIC, INC.

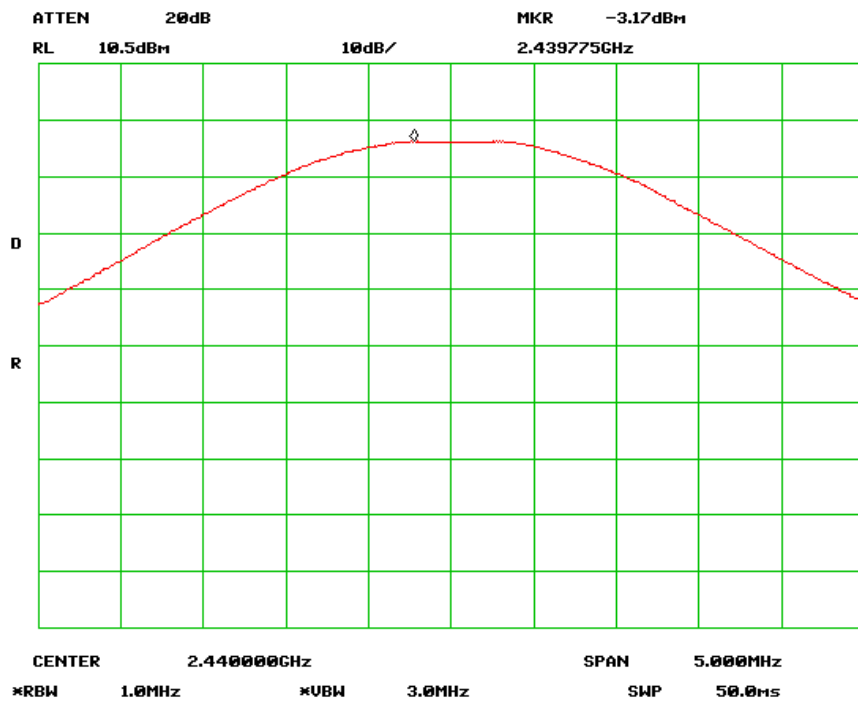
Accessing global markets

Title: RF Test Report for Mobile Phone
Main Model: s505
Serial Model: N/A
To: FCC Part 15.247: 2013, ANSI C63.4: 2009

Report No.: 14070214-FCC-R4
Issue Date: June 18, 2014
Page: 15 of 52
www.siemic.com
www.siemic.com.cn



Power-2402



Power-2440.

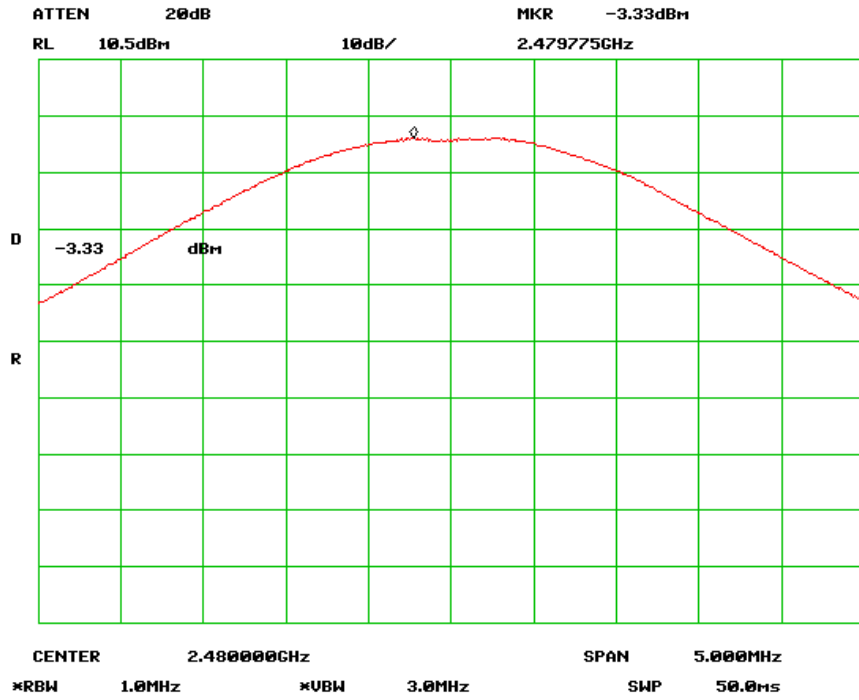


SIEMIC, INC.

Accessing global markets

Title: RF Test Report for Mobile Phone
Main Model: s505
Serial Model: N/A
To: FCC Part 15.247: 2013, ANSI C63.4: 2009

Report No.: 14070214-FCC-R4
Issue Date: June 18, 2014
Page: 16 of 52
www.siemec.com
www.siemec.com.cn



Power-2480

5.5 §15.247(e) - Power Spectral Density

1. **Conducted Measurement**
 EUT was set for low, mid, high channel with modulated mode and highest RF output power.
 The spectrum analyzer was connected to the antenna terminal.
2. **Environmental Conditions**

Temperature	23 °C
Relative Humidity	58%
Atmospheric Pressure	1019mbar
3. **Conducted Emissions Measurement Uncertainty**
 All test measurements carried out are traceable to national standards. The uncertainty of the measurement at a confidence level of approximately 95% (in the case where distributions are normal), with a coverage factor of 2, in the range 30MHz – 40GHz is ±1.5dB.
4. Test date : May 18, 2014
 Tested By : Wiky Jam

Requirement(s):

The DTS rules specify a conducted PSD limit within the DTS bandwidth during any time interval of continuous transmission. Such specifications require that the same method as used to determine the conducted output power shall also be used to determine the power spectral density. Therefore, if maximum peak conducted output power was measured to demonstrate compliance to the output power limit, then the peak PSD procedure below (Method PKPSD) shall be used. If maximum conducted output power was measured to demonstrate compliance to the output power limit, then one of the average PSD procedures shall be used, as applicable based on the following criteria (the peak PSD procedure is also an acceptable option)

Procedures:

Method PKPSD (peak PSD):

This procedure shall be used if maximum peak conducted output power was used to demonstrate compliance, and is optional if the maximum conducted (average) output power was used to demonstrate compliance.

1. Set analyzer center frequency to DTS channel center frequency.
2. Set the span to 1.5 times the DTS bandwidth.
3. Set the RBW to: $3 \text{ kHz} \leq \text{RBW} \leq 100 \text{ kHz}$.
4. Set the VBW $\geq 3 \text{ RBW}$.
5. Detector = peak.
6. Sweep time = auto couple.
7. Trace mode = max hold.
8. Allow trace to fully stabilize.
9. Use the peak marker function to determine the maximum amplitude level within the RBW.
10. If measured value exceeds limit, reduce RBW (no less than 3 kHz) and repeat.

Test Result: Pass.

Please refer to the following tables and plots.

Channel	Frequency (MHz)	PSD (dBm)	Limit (dBm)
Low	2402	-13.33	8
Middle	2440	-12.67	8
High	2480	-13.00	8

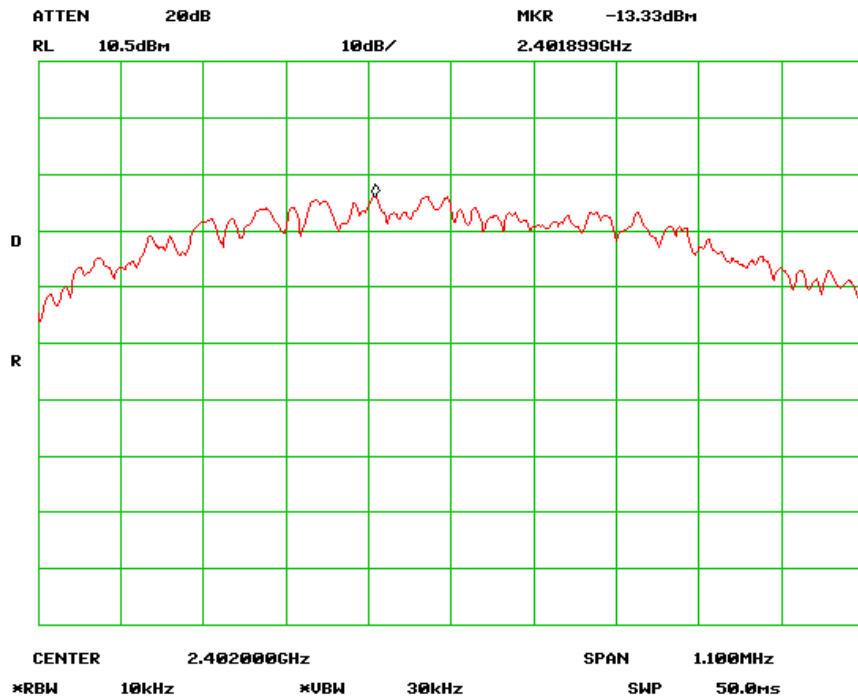


SIEMIC, INC.

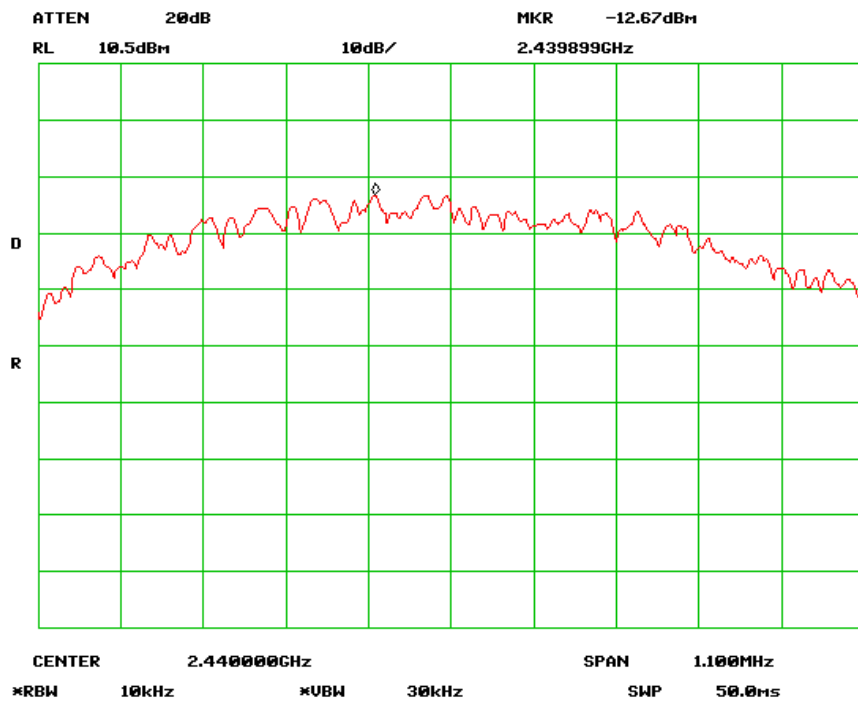
Accessing global markets

Title: RF Test Report for Mobile Phone
Main Model: s505
Serial Model: N/A
To: FCC Part 15.247: 2013, ANSI C63.4: 2009

Report No.: 14070214-FCC-R4
Issue Date: June 18, 2014
Page: 18 of 52
www.siemic.com
www.siemic.com.cn



PSD-2402



PSD-2440

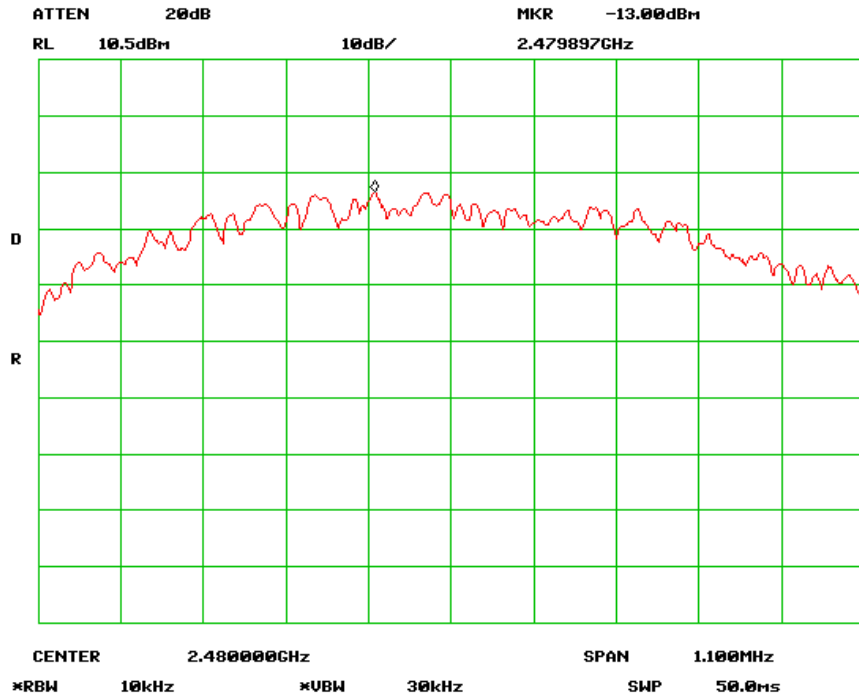


SIEMIC, INC.

Accessing global markets

Title: RF Test Report for Mobile Phone
Main Model: s505
Serial Model: N/A
To: FCC Part 15.247: 2013, ANSI C63.4: 2009

Report No.: 14070214-FCC-R4
Issue Date: June 18, 2014
Page: 19 of 52
www.siemic.com
www.siemic.com.cn



PSD-2480

5.6 §15.247(d) –Band-Edge

1. In any 100 kHz bandwidth outside the frequency band in which the spread spectrum or digitally modulated intentional radiator is operating, the radio frequency power that is produced by the intentional radiator shall be at least 20 dB below that in the 100 kHz bandwidth within the band that contains the highest level of the desired power, based on either an RF conducted or a radiated measurement, provided the transmitter demonstrates compliance with the peak conducted power limits. If the transmitter complies with the conducted power limits based on the use of RMS averaging over a time interval, as permitted under paragraph (b)(3) of this section, the attenuation required under this paragraph shall be 30 dB instead of 20 dB. Attenuation below the general limits specified in §15.209(a) is not required. In addition, radiated emissions which fall in the restricted bands, as defined in §15.205(a), must also comply with the radiated emission limits specified in §15.209(a) (see §15.205(c))

2. Environmental Conditions

Temperature	22°C
Relative Humidity	57%
Atmospheric Pressure	1018mbar

3. Test date : June 17, 2014
 Tested By : Wiky Jam

Standard Requirement:

In any 100 kHz bandwidth outside the frequency band in which the spread spectrum or digitally modulated intentional radiator is operating, the radio frequency power that is produced by the intentional radiator shall be at least 20 dB below that in the 100 kHz bandwidth within the band that contains the highest level of the desired power, based on either an RF conducted or a radiated measurement, provided the transmitter demonstrates compliance with the peak conducted power limits. If the transmitter complies with the conducted power limits based on the use of RMS averaging over a time interval, as permitted under paragraph (b)(3) of this section, the attenuation required under this paragraph shall be 30 dB instead of 20 dB. Attenuation below the general limits specified in §15.209(a) is not required. In addition, radiated emissions which fall in the restricted bands, as defined in §15.205(a), must also comply with the radiated emission limits specified in §15.209(a) (see §15.205(c)).

Procedures: (Radiated Method Only)

1. Check the calibration of the measuring instrument using either an internal calibrator or a known signal from an external generator.
2. Position the EUT without connection to measurement instrument. Put it on the Rotated table and turn on the EUT and make it operate in transmitting mode. Then set it to Low Channel and High Channel within its operating range, and make sure the instrument is operated in its linear range.
3. First, set both RBW and VBW of spectrum analyzer to 100 kHz with a convenient frequency span including 100kHz bandwidth from band edge, check the emission of EUT, if pass then set Spectrum Analyzer as below:
 - a. The resolution bandwidth and video bandwidth of test receiver/spectrum analyzer is 120 kHz for Quasiy Peak detection at frequency below 1GHz.
 - b. The resolution bandwidth of test receiver/spectrum analyzer is 1MHz and video bandwidth is 3MHz for Peak detection at frequency above 1GHz.
 - c. The resolution bandwidth of test receiver/spectrum analyzer is 1MHz and the video bandwidth for Average detection (AV) as below at frequency above 1GHz.

<input checked="" type="checkbox"/> 1 kHz (Duty cycle < 98%)	<input type="checkbox"/> 10 Hz (Duty cycle > 98%)
--------------------------------------------------------------	---------------------------------------------------
4. Measure the highest amplitude appearing on spectral display and set it as a reference level. Plot the graph with marking the highest point and edge frequency.
5. Repeat above procedures until all measured frequencies were complete.

Note:

For Hopping device, should test hopping mode and CW Tx mode separately. For hopping mode, find out the worst points outside the frequency band firstly, then set the worst points as the center frequency, use above average 3 (c) spectrum analyzer set, find out the final worst average value separately.

Test Result: Pass.

Please refer to the following tables and plots.

Note:

L: Left Side

R: Right Side

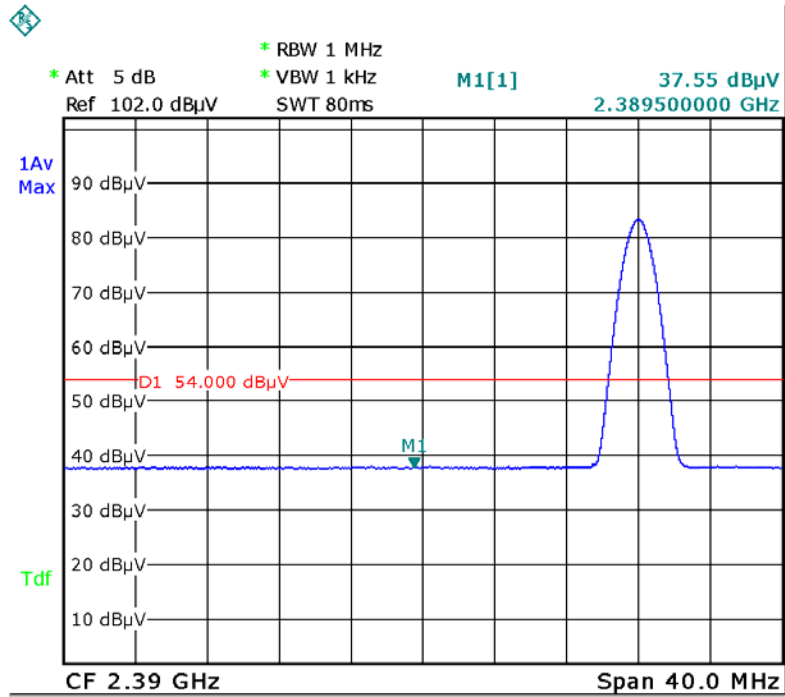


SIEMIC, INC.

Accessing global markets

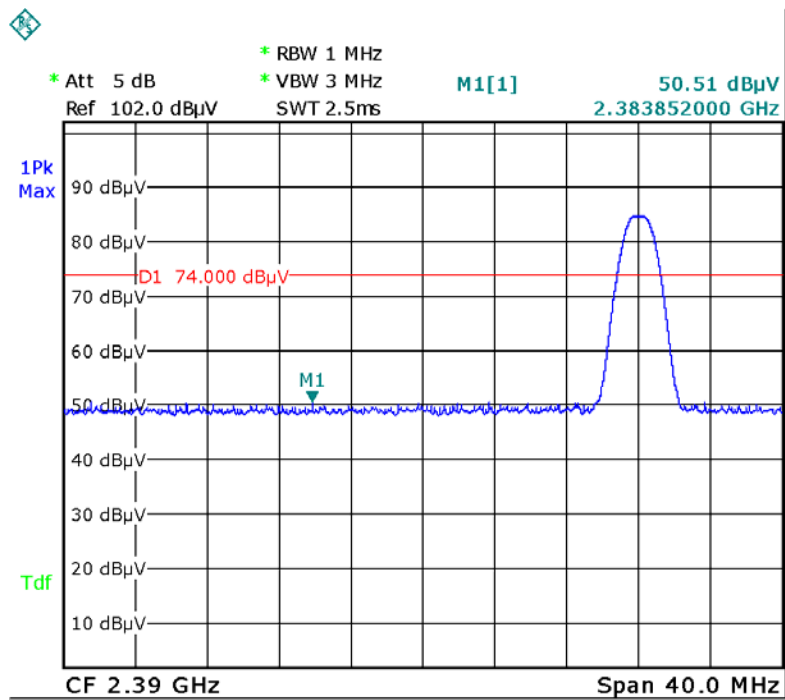
Title: RF Test Report for Mobile Phone
Main Model: s505
Serial Model: N/A
To: FCC Part 15.247: 2013, ANSI C63.4: 2009

Report No.: 14070214-FCC-R4
Issue Date: June 18, 2014
Page: 22 of 52
www.siemic.com
www.siemic.com.cn



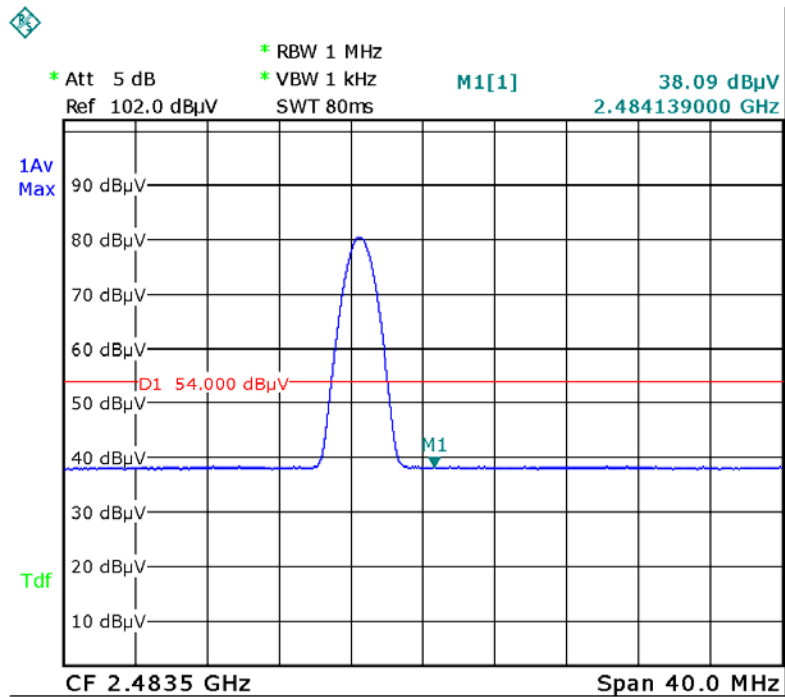
Date: 17.JUN.2014 11:43:05

BLE-L-AV



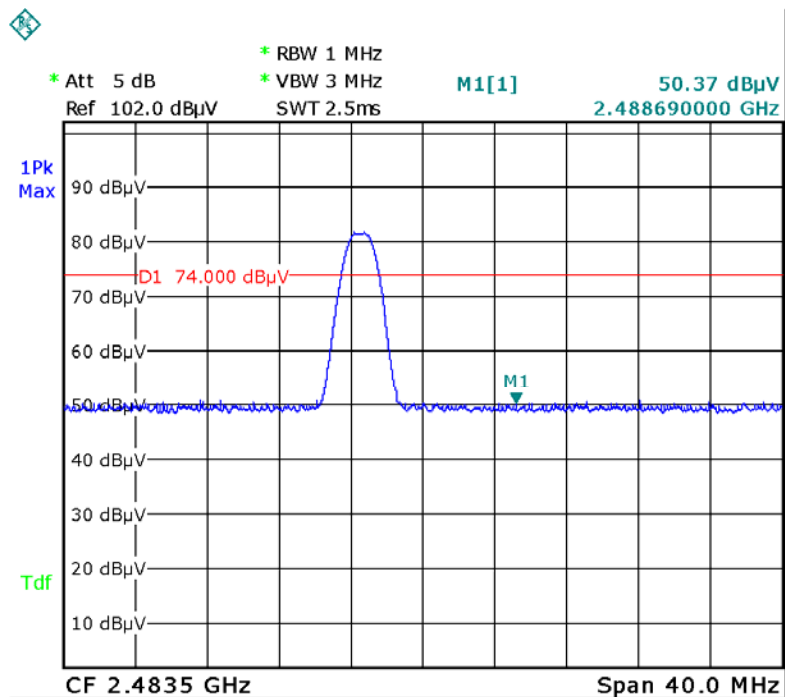
Date: 28.MAY.2014 14:02:53

BLE-L-PK



Date: 17.JUN.2014 11:44:48

BLE-R-AV



Date: 28.MAY.2014 14:06:35

BLE-R-PK

5.7 §15.207 (a) - AC Power Line Conducted Emissions

Requirement:

Frequency of emission (MHz)	Conducted limit (dBµV)	
	Quasi-peak	Average
0.15–0.5	66 to 56*	56 to 46*
0.5–5	56	46
5–30	60	50

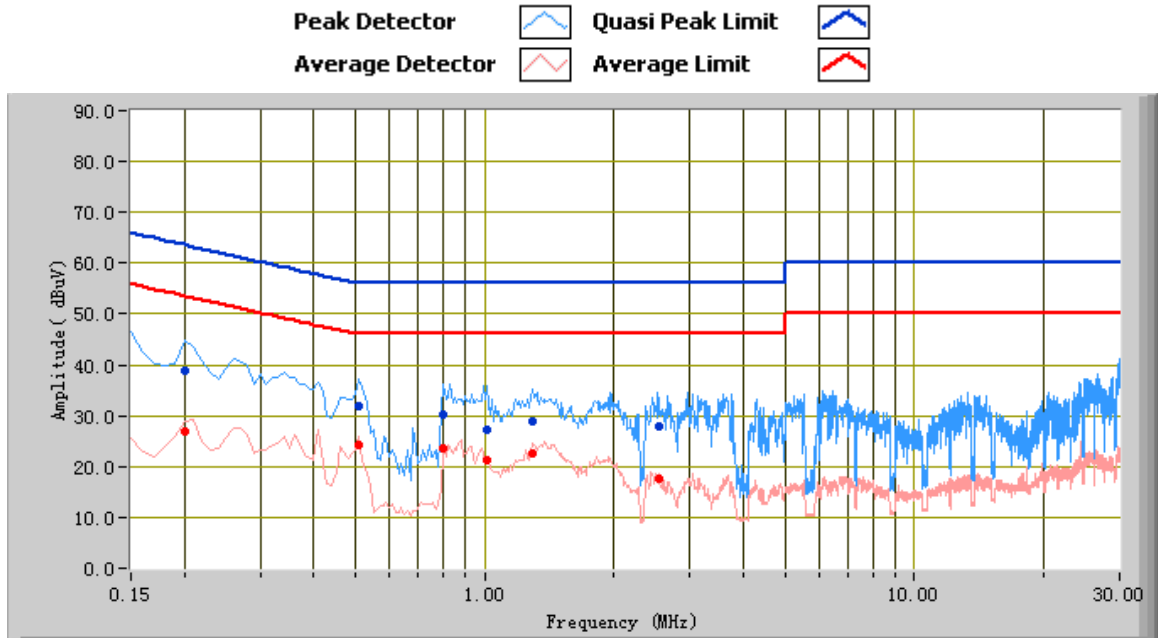
*Decreases with the logarithm of the frequency.

Procedures:

- All possible modes of operation were investigated. Only the 6 worst case emissions measured, using the correct CISPR and Average detectors, are reported. All other emissions were relatively insignificant.
- A "-ve" margin indicates a PASS as it refers to the margin present below the limit line at the particular frequency.
- Conducted Emissions Measurement Uncertainty
All test measurements carried out are traceable to national standards. The uncertainty of the measurement at a confidence level of approximately 95% (in the case where distributions are normal), with a coverage factor of 2, in the range 9kHz – 30MHz (Average & Quasi-peak) is ±3.5dB.
- Environmental Conditions

Temperature	24°C
Relative Humidity	56%
Atmospheric Pressure	1020mar
- Test date: May 27, 2014
Tested By : Wiky Jam

Test Mode:	GFSK Transmitting Mode
-------------------	-------------------------------

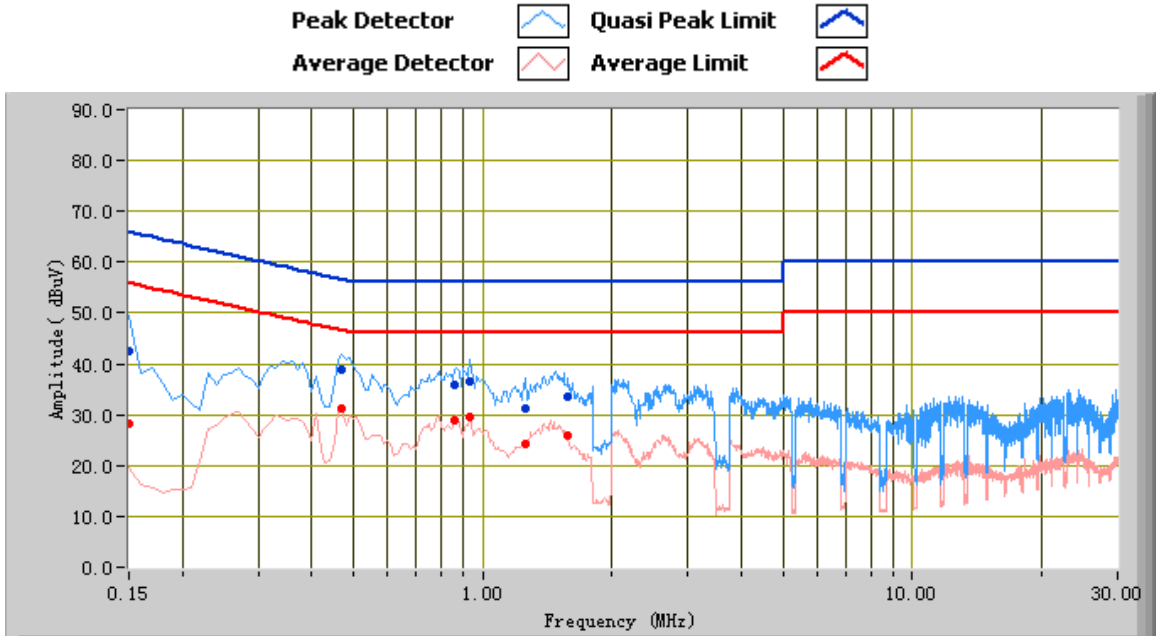


Test Data

Phase Line Plot at 120Vac, 60Hz

Frequency (MHz)	Quasi Peak (dBuV)	Limit (dBuV)	Margin (dB)	Average (dBuV)	Limit (dBuV)	Margin (dB)	Factors (dB)
0.51	31.75	56.00	-24.25	24.17	46.00	-21.83	10.57
0.20	38.81	63.61	-24.80	26.79	53.61	-26.82	12.12
0.80	30.28	56.00	-25.72	23.57	46.00	-22.43	10.40
1.01	27.38	56.00	-28.62	21.14	46.00	-24.86	10.29
1.29	29.04	56.00	-26.96	22.44	46.00	-23.56	10.31
2.54	27.88	56.00	-28.12	17.61	46.00	-28.39	10.54

Test Mode:	GFSK Transmitting Mode
-------------------	-------------------------------



Test Data

Phase Neutral Plot at 120Vac, 60Hz



Frequency (MHz)	Quasi Peak (dBuV)	Limit (dBuV)	Margin (dB)	Average (dBuV)	Limit (dBuV)	Margin (dB)	Factors (dB)
0.47	39.02	56.51	-17.49	31.08	46.51	-15.43	10.70
0.93	36.57	56.00	-19.43	29.65	46.00	-16.35	10.33
0.15	42.35	66.00	-23.65	28.17	56.00	-27.83	12.49
0.86	35.80	56.00	-20.20	29.00	46.00	-17.00	10.37
1.58	33.57	56.00	-22.43	25.94	46.00	-20.06	10.36
1.26	31.23	56.00	-24.77	24.21	46.00	-21.79	10.31

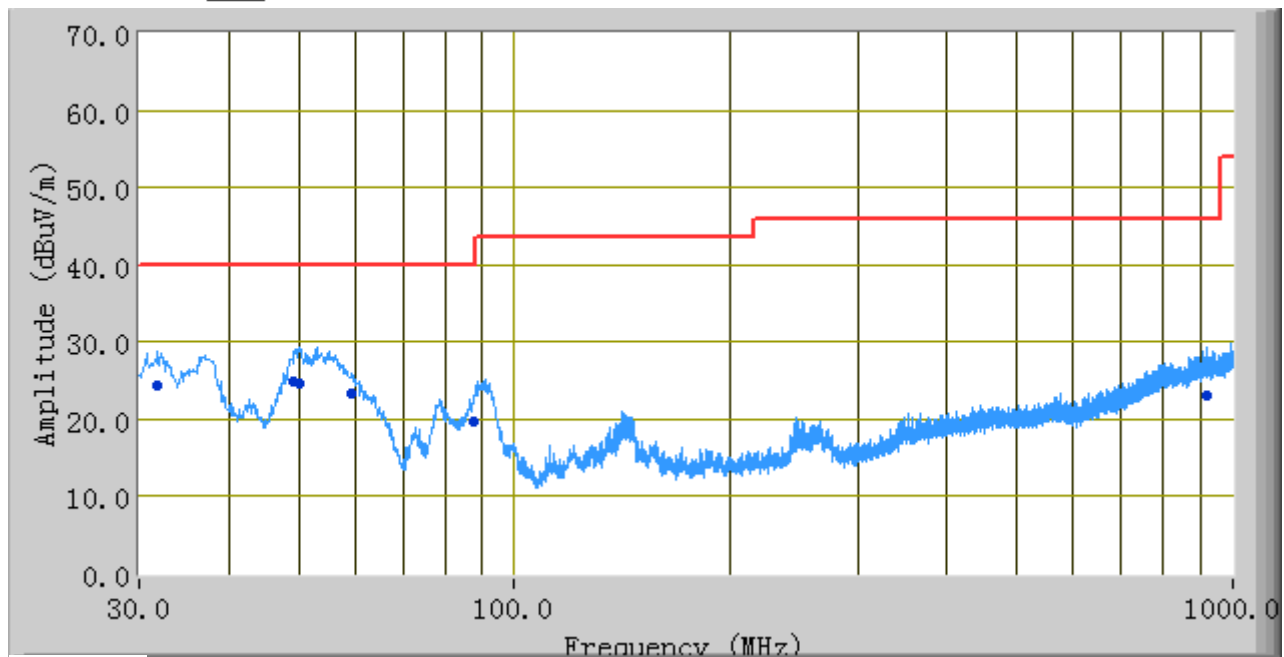
1 kHz (Duty cycle < 98%)
 10 Hz (Duty cycle > 98%)

4. Steps 2 and 3 were repeated for the next frequency point, until all selected frequency points were measured.

Test Result: Pass

Test Mode: **GFSK Transmitting Mode**

Peak Detector 
 Quasi Peak Limit 



Test Data

Frequency (MHz)	Quasi Peak (dBuV/m)	Azimuth	Polarity(H/V)	Height (cm)	Factors (dB)	Limit (dBuV)	Margin (dB)
50.15	24.50	0.00	V	134.00	-14.00	40.00	-15.50
31.84	24.39	112.00	V	143.00	-2.60	40.00	-15.61
49.26	24.85	111.00	V	100.00	-13.60	40.00	-15.15
59.17	23.37	127.00	V	102.00	-13.98	40.00	-16.63
87.96	19.62	216.00	V	125.00	-13.79	40.00	-20.38
920.65	23.20	76.00	V	290.00	5.10	46.00	-22.80

Above 1 GHz:

Test Mode: Transmitting

Low Channel (2402 MHz)

Frequency (MHz)	S.A. Reading (dBμV)	Detector (PK/AV)	Polarity (H/V)	Ant. Factor (dB/m)	Cable Loss (dB)	Pre-Amp. Gain (dB)	Cord. Amp. (dBμV/m)	Limit (dBμV/m)	Margin (dB)
4804	34.77	AV	V	33.83	4.87	24	49.47	54	-4.53
4804	33.93	AV	H	33.83	4.87	24	48.63	54	-5.37
4804	42.59	PK	V	33.83	4.87	24	57.29	74	-16.71
4804	43.11	PK	H	33.83	4.87	24	57.81	74	-16.19

Middle Channel (2440 MHz)

Frequency (MHz)	S.A. Reading (dBμV)	Detector (PK/AV)	Polarity (H/V)	Ant. Factor (dB/m)	Cable Loss (dB)	Pre-Amp. Gain (dB)	Cord. Amp. (dBμV/m)	Limit (dBμV/m)	Margin (dB)
4880	32.24	AV	V	33.86	4.87	24	46.97	54	-7.03
4880	34.07	AV	H	33.86	4.87	24	48.80	54	-5.20
4880	43.01	PK	V	33.86	4.87	24	57.74	74	-16.26
4880	42.38	PK	H	33.86	4.87	24	57.11	74	-16.89

High Channel (2480 MHz)

Frequency (MHz)	S.A. Reading (dBμV)	Detector (PK/AV)	Polarity (H/V)	Ant. Factor (dB/m)	Cable Loss (dB)	Pre-Amp. Gain (dB)	Cord. Amp. (dBμV/m)	Limit (dBμV/m)	Margin (dB)
4960	32.18	AV	V	33.9	4.87	24	46.95	54	-7.05
4960	33.76	AV	H	33.9	4.87	24	48.53	54	-5.47
4960	43.17	PK	V	33.9	4.87	24	57.94	74	-16.06
4960	43.26	PK	H	33.9	4.87	24	58.03	74	-15.97

Annex A. TEST INSTRUMENT & METHOD

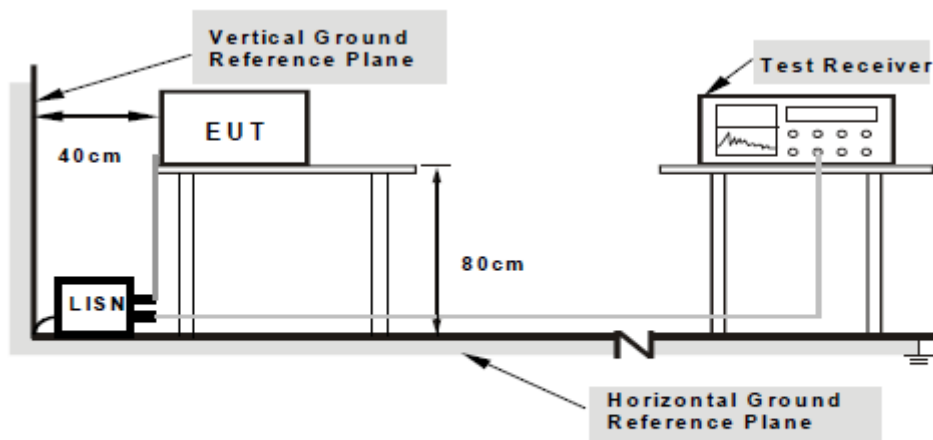
Annex A.i. TEST INSTRUMENTATION & GENERAL PROCEDURES

Instrument	Model	Serial #	Calibration Date	Calibration Due Date
AC Line Conducted Emissions				
EMI test receiver	ESCS30	8471241027	05/27/2014	05/26/2015
Line Impedance Stabilization Network	LI-125A	191106	11/14/2013	11/13/2014
Line Impedance Stabilization Network	LI-125A	191107	11/14/2013	11/13/2014
LISN	ISN T800	34373	01/11/2014	01/10/2015
Double Ridge Horn Antenna (1 ~18GHz)	AH-118	71283	11/20/2013	11/19/2014
Transient Limiter	LIT-153	531118	09/02/2013	09/01/2014
RF conducted test				
Agilent ESA-E SERIES SPECTRUM ANALYZER	E4407B	MY45108319	09/17/2013	09/16/2014
Power Splitter	1#	1#	09/02/2013	09/01/2014
DC Power Supply	E3640A	MY40004013	09/17/2013	09/16/2014
Wireless Connectivity Test Set	N4010A	GB44440198	03/20/2014	03/19/2015
Radiated Emissions				
EMI test receiver	ESL6	100262	11/23/2013	11/22/2014
Positioning Controller	UC3000	MF780208282	11/19/2013	11/19/2014
OPT 010 AMPLIFIER (0.1-1300MHz)	8447E	2727A02430	09/02/2013	09/01/2014
Microwave Preamplifier (0.5~18GHz)	PAM-118	443008	09/02/2013	09/01/2014
Bilog Antenna (30MHz~6GHz)	JB6	A110712	09/23/2013	09/22/2014
Double Ridge Horn Antenna (1 ~18GHz)	AH-118	71283	11/20/2013	11/19/2014
Universal Radio Communication Tester	CMU200	121393	09/17/2013	09/16/2014

Annex A. ii. CONDUCTED EMISSIONS TEST DESCRIPTION

Test Set-up

1. The EUT and supporting equipment were set up in accordance with the requirements of the standard on top of a 1.5m x 1m x 0.8m high, non-metallic table, as shown in Annex B.
2. The power supply for the EUT was fed through a 50Ω/50μH EUT LISN, connected to filtered mains.
3. The RF OUT of the EUT LISN was connected to the EMI test receiver via a low-loss coaxial cable.
4. All other supporting equipments were powered separately from another main supply.



**Note: 1. Support units were connected to second LISN.
 2. Both of LISNs (AMN) are 80cm from EUT and at least 80cm from other units and other metal planes support units.**

For the actual test configuration, please refer to the related item – Photographs of the Test Configuration1.

Test Method

1. The EUT was switched on and allowed to warm up to its normal operating condition.
2. A scan was made on the NEUTRAL line (for AC mains) or Earth line (for DC power) over the required frequency range using an EMI test receiver.
3. High peaks, relative to the limit line, were then selected.
4. The EMI test receiver was then tuned to the selected frequencies and the necessary measurements made with a receiver bandwidth setting of 10 kHz. For FCC tests, only Quasi-peak measurements were made; while for CISPR/EN tests, both Quasi-peak and Average measurements were made.
5. Steps 2 to 4 were then repeated for the LIVE line (for AC mains) or DC line (for DC power).

Description of Conducted Emission Program

This EMC Measurement software run Lab View automation software and offers a common user interface for electromagnetic interference (EMI) measurements. This software is a modern and powerful tool for controlling and monitoring EMI test receivers and EMC test systems. It guarantees reliable collection, evaluation, and documentation of measurement results. Basically, this program will run a pre-scan measurement before it proceeds with the final measurement. The pre-scan routine will run the common scan range from 150 kHz to 30 MHz; the program will first start a peak and average scan on selectable measurement time and step size. After the program complete the pre-scan, this program will perform the Quasi Peak and Average measurement, based on the pre-scan peak data reduction result.

Sample Calculation Example

At 20 MHz

limit = $250 \mu\text{V} = 47.96 \text{ dB}\mu\text{V}$

Transducer factor of LISN, pulse limiter & cable loss at 20 MHz = 11.20 dB

Q-P reading obtained directly from EMI Receiver = 40.00 dB μV
(Calibrated for system losses)

Therefore, Q-P margin = $47.96 - 40.00 = 7.96$ i.e. **7.96 dB below limit**

Annex A. iii RADIATED EMISSIONS TEST DESCRIPTION

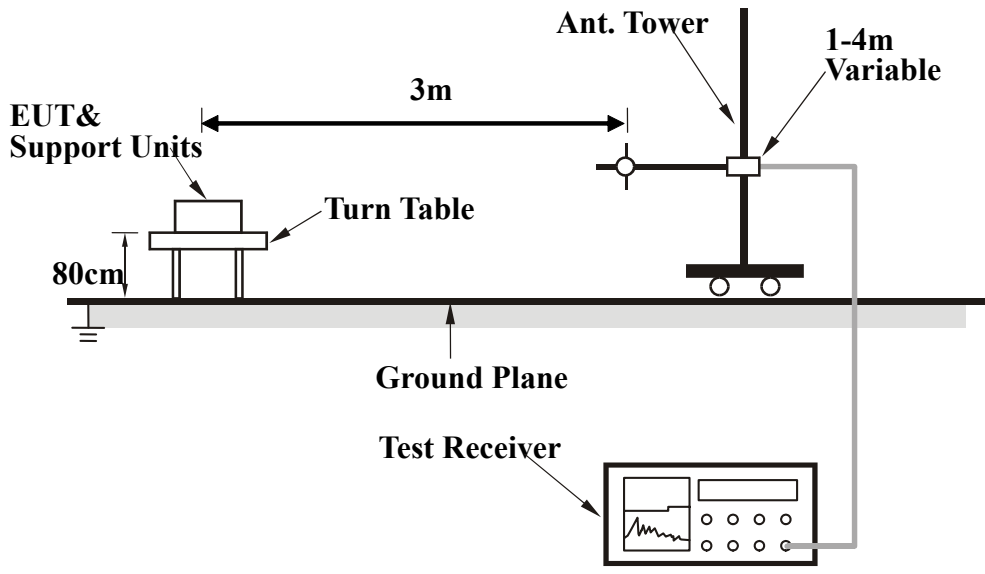
EUT Characterisation

EUT characterisation, over the frequency range from 30MHz to 10th Harmonic , was done in order to minimise radiated emissions testing time while still maintaining high confidence in the test results.

The EUT was placed in the chamber, at a height of about 0.8m on a turntable. Its radiated emissions frequency profile was observed, using a spectrum analyzer /receiver with the appropriate broadband antenna placed 3m away from the EUT. Radiated emissions from the EUT were maximised by rotating the turntable manually, changing the antenna polarisation and manipulating the EUT cables while observing the frequency profile on the spectrum analyzer / receiver. Frequency points at which maximum emissions occurred, clock frequencies and operating frequencies were then noted for the formal radiated emissions test at the Open Area Test Site (OATS).

Test Set-up

1. The EUT and supporting equipment were set up in accordance with the requirements of the standard on top of a 1.5m X 1.0m X 0.8m high, non-metallic table.
2. The filtered power supply for the EUT and supporting equipment were tapped from the appropriate power sockets located on the turntable.
3. The relevant broadband antenna was set at the required test distance away from the EUT and supporting equipment boundary.



Test Method

The following procedure was performed to determine the maximum emission axis of EUT:

1. With the receiving antenna is H polarization; rotate the EUT in turns with three orthogonal axes to determine the axis of maximum emission.
2. With the receiving antenna is V polarization; rotate the EUT in turns with three orthogonal axes to determine the axis of maximum emission.
3. Compare the results derived from above two steps. So, the axis of maximum emission from EUT was determined and the configuration was used to perform the final measurement.

Final Radiated Emission Measurement

1. Setup the configuration according to figure 1. Turn on EUT and make sure that it is in normal function.
2. For emission frequencies measured below 1 GHz, a pre-scan is performed in a shielded chamber to determine the accurate frequencies of higher emissions will be checked on a open test site. As the same purpose, for emission frequencies measured above 1 GHz, a pre-scan also be performed with a 1 meter measuring distance before final test.
3. For emission frequencies measured below and above 1 GHz, set the spectrum analyzer on a 100 kHz and 1 MHz resolution bandwidth respectively for each frequency measured in step 2.
4. The search antenna is to be raised and lowered over a range from 1 to 4 meters in horizontally polarized orientation. Position the highness when the highest value is indicated on spectrum analyzer, then change the orientation of EUT on test table over a range from 0 ° to 360 ° with a speed as slow as possible, and keep the azimuth that highest emission is indicated on the spectrum analyzer. Vary the antenna position again and record the highest value as a final reading.
5. Repeat step 4 until all frequencies need to be measured was complete.
6. Repeat step 5 with search antenna in vertical polarized orientations.

During the radiated emission test, the Spectrum Analyzer was set with the following configurations:

Frequency Band (MHz)	Function	Resolution bandwidth	Video Bandwidth
30 to 1000	Peak	100 kHz	100 kHz
Above 1000	Peak	1 MHz	1 MHz
	Average	1 MHz	10 Hz

Sample Calculation Example

The field strength is calculated by adding the Antenna Factor and Cable Factor, and subtracting the Amplifier Gain (if any) from the measured reading. For the limit is employed average value, therefore the peak value can be transferred to average value by subtracting the duty factor. The basic equation with a sample calculation is as follows:

$$\text{Peak} = \text{Reading} + \text{Corrected Factor}$$

Where

$$\text{Corr. Factor} = \text{Antenna Factor} + \text{Cable Factor} - \text{Amplifier Gain (if any)}$$

And the average value is

$$\text{Average} = \text{Peak Value} + \text{Duty Factor or}$$

$$\text{Set RBW} = 1\text{MHz, VBW} = 10\text{Hz.}$$

Note:

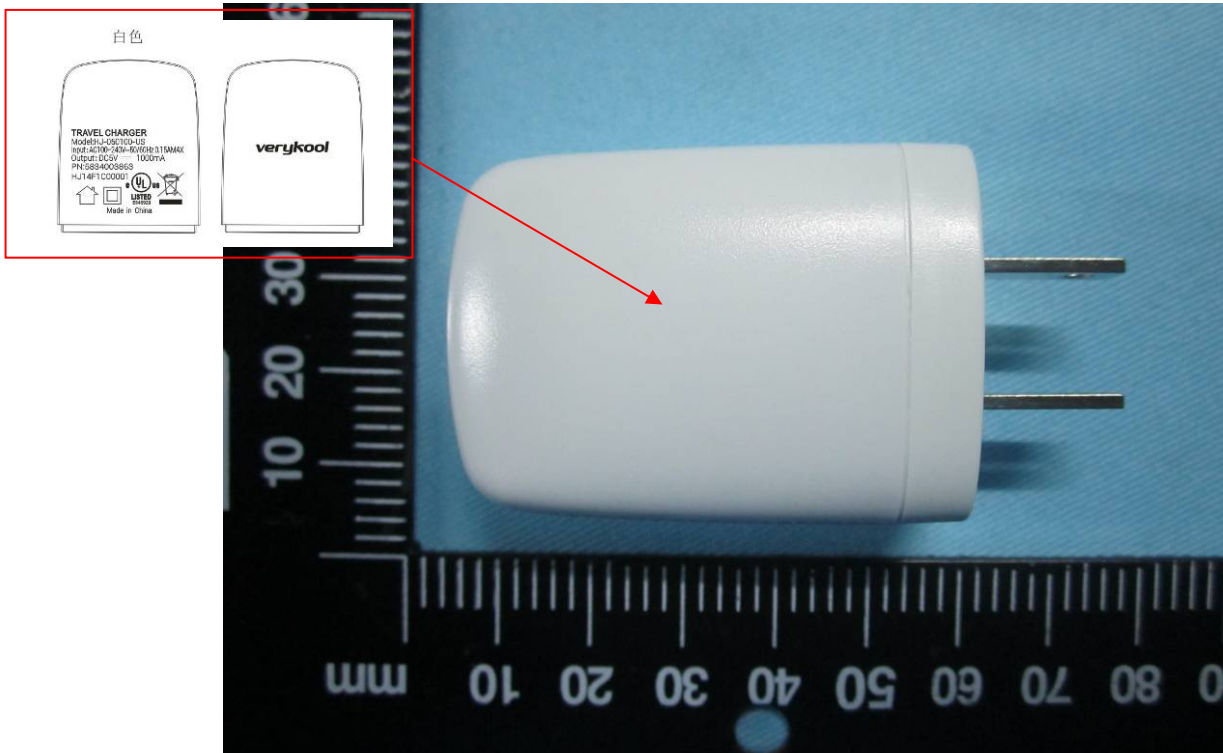
If the measured frequencies are fall in the restricted frequency band, the limit employed must be quasi peak value when frequencies are below or equal to 1 GHz. And the measuring instrument is set to quasi peak detector function.

Annex B. EUT AND TEST SETUP PHOTOGRAPHS

Annex B. i. Photograph 1: EUT External Photo



Whole Package - Top View



Adapter – Front View



EUT - Front View



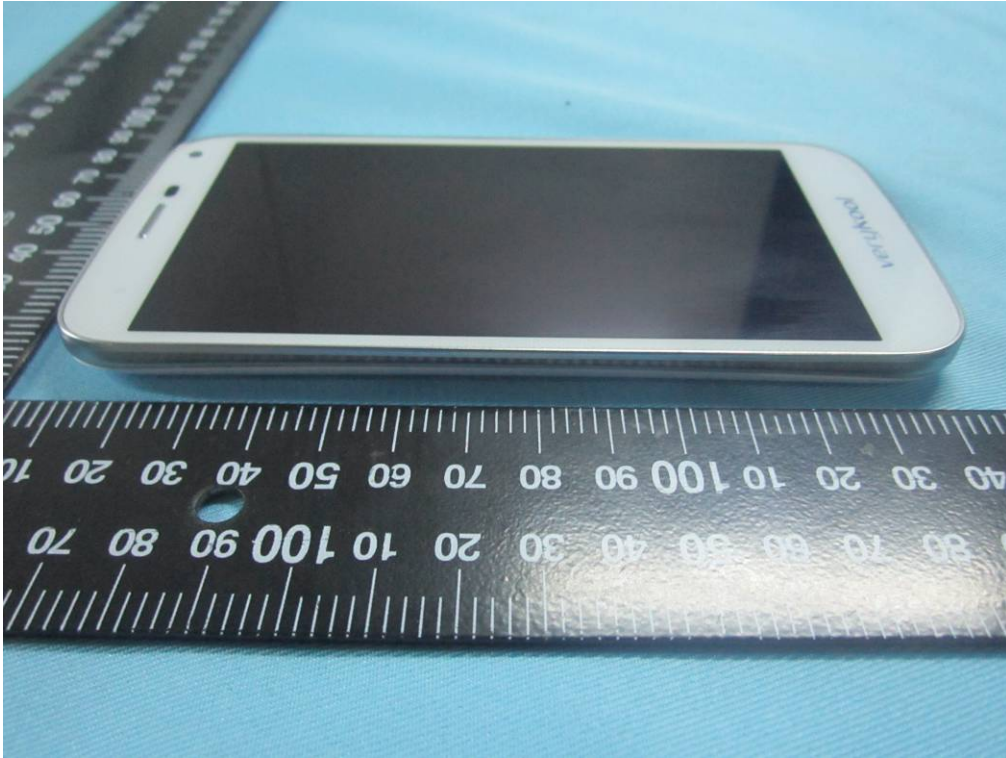
EUT - Rear View



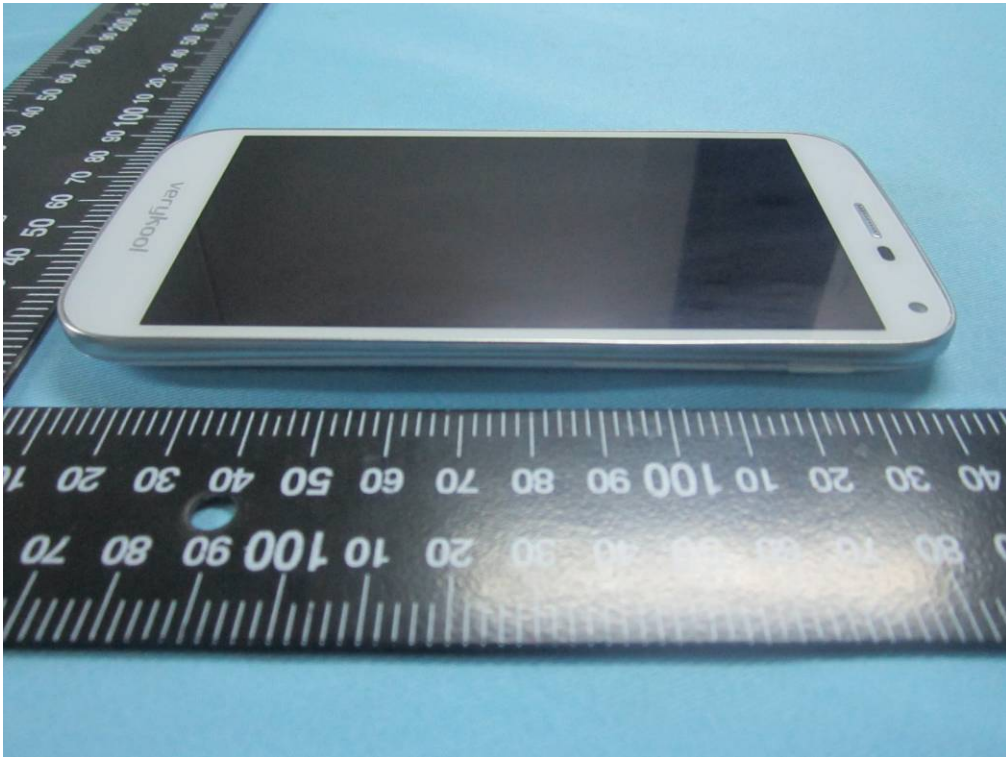
EUT - Top View



EUT - Bottom View



EUT - Left View

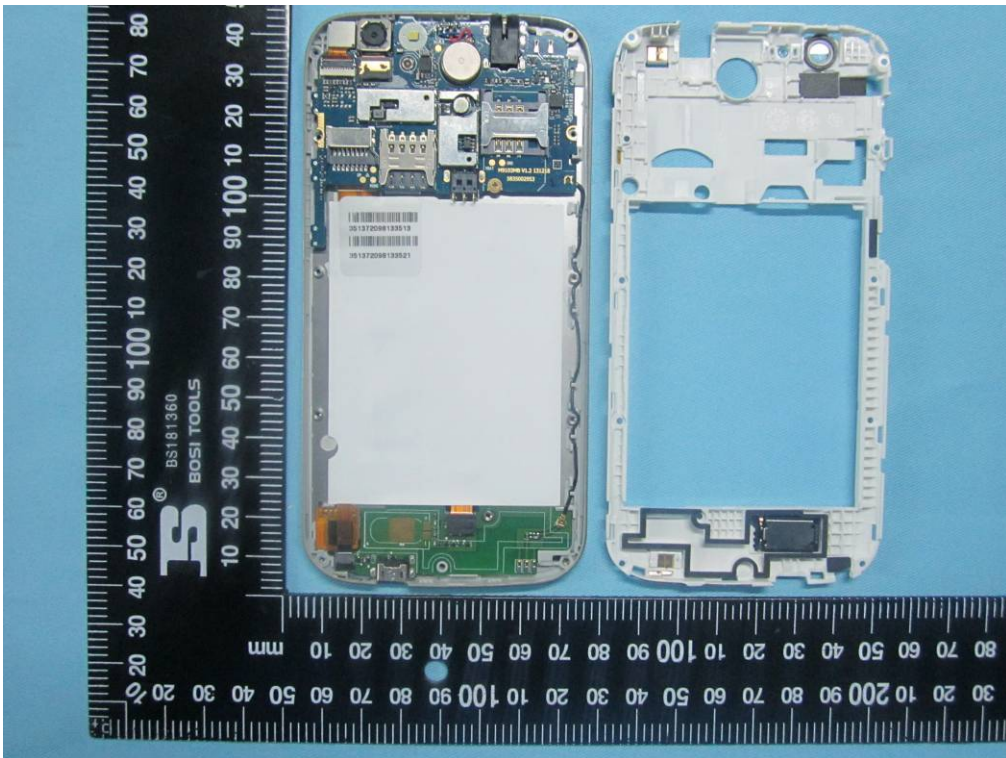


EUT - Right View

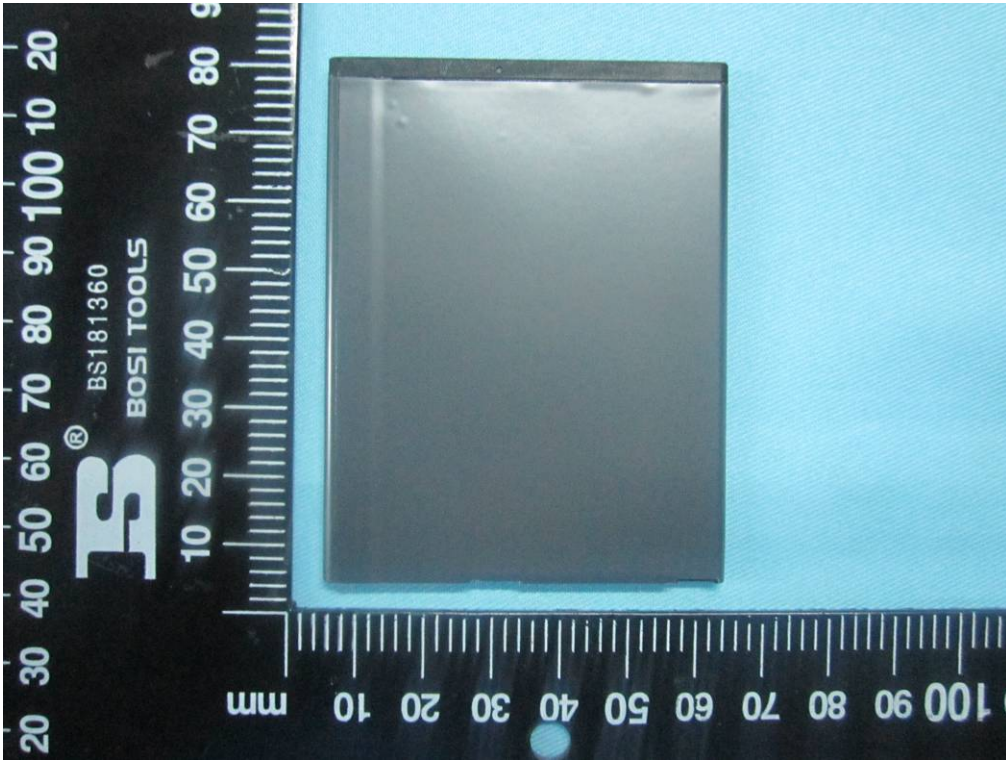
Annex B. ii. Photograph 2: EUT Internal Photo



Cover Off - Top View 1



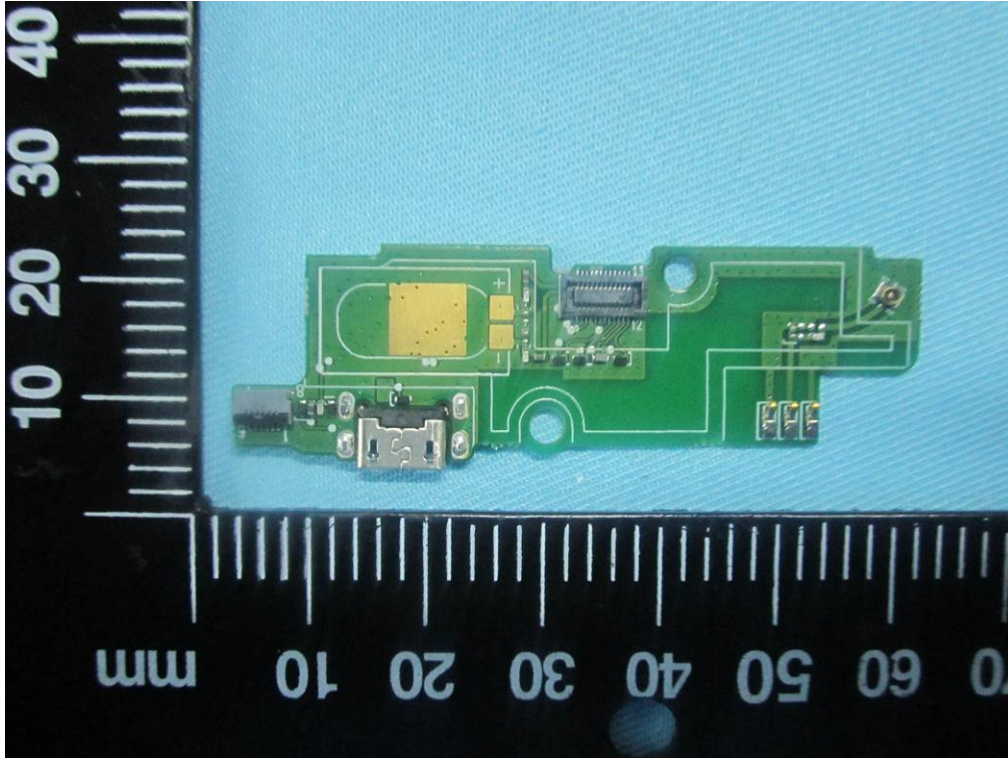
Cover Off - Top View 2



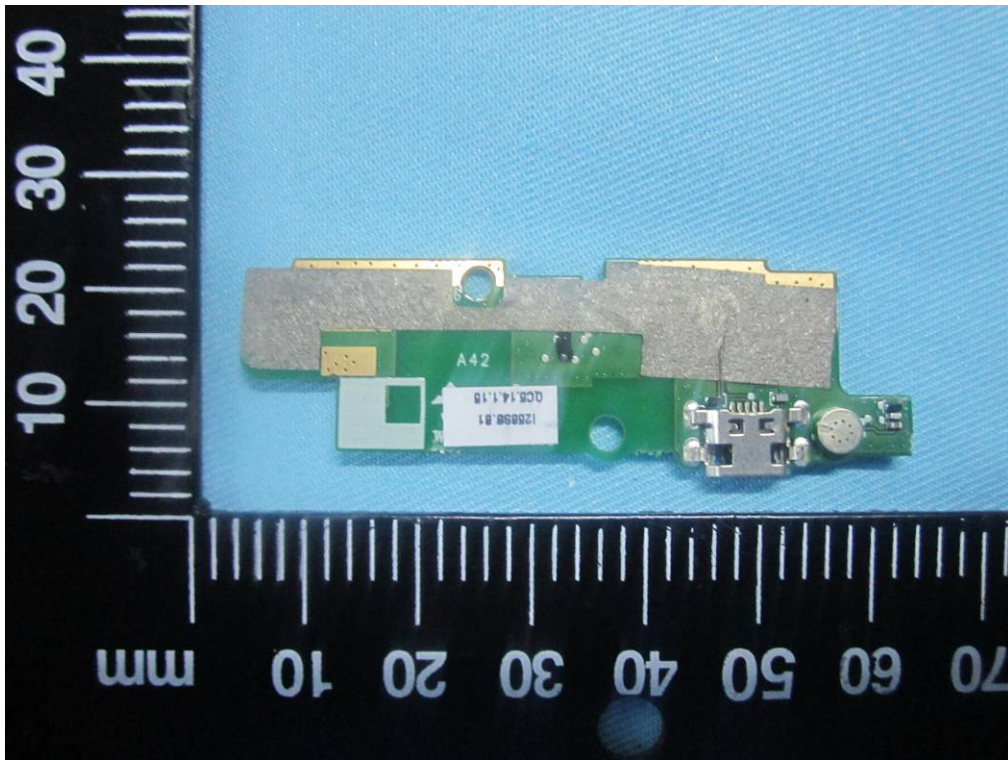
Battery - Top View



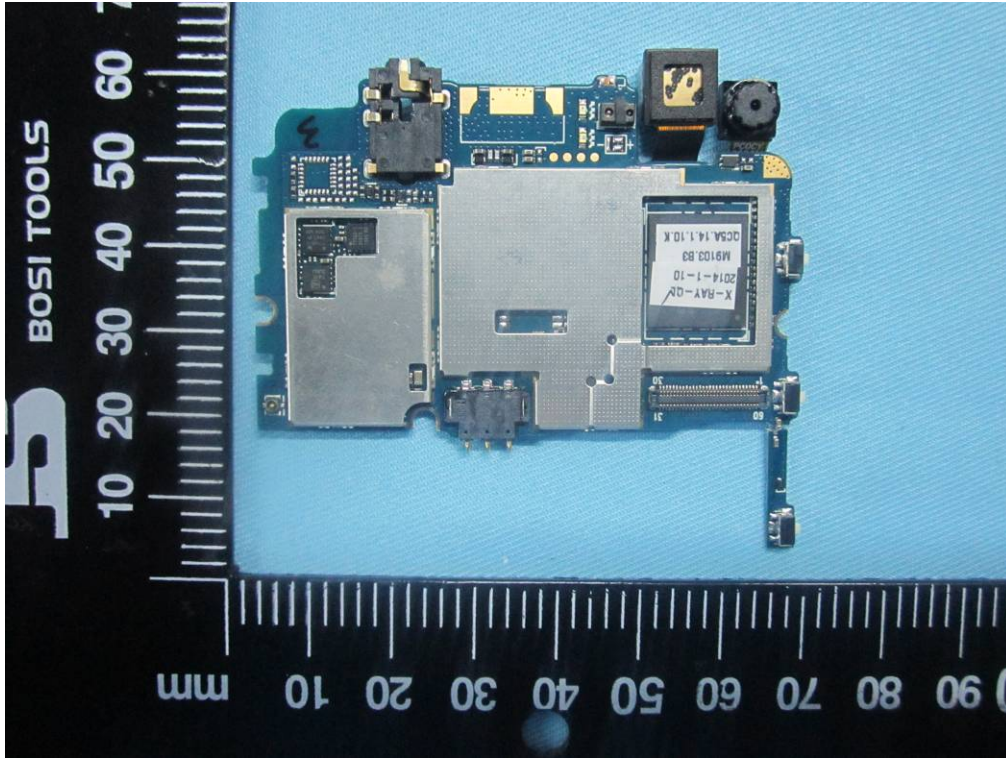
Battery - Bottom View



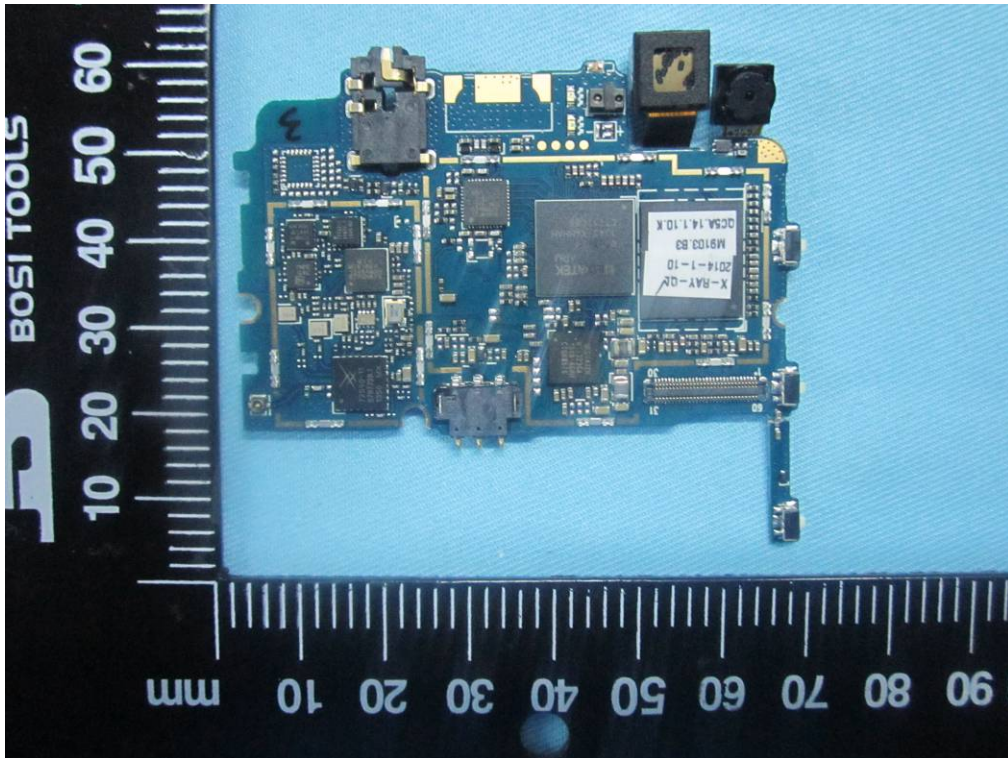
Connect board – Front View



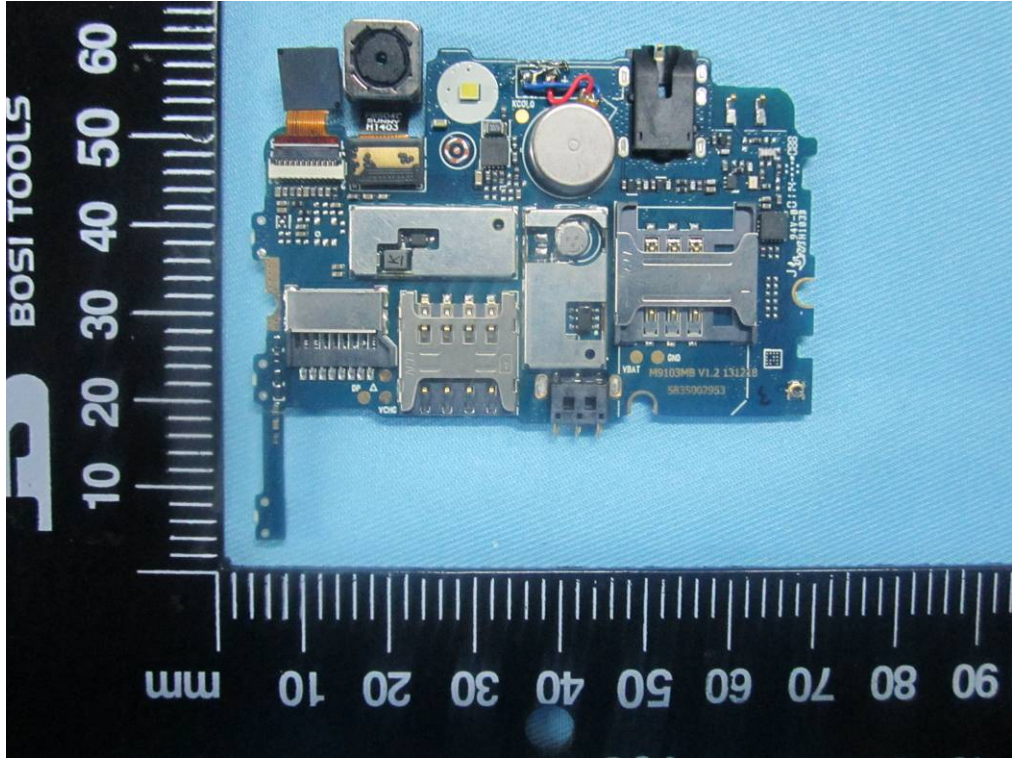
Connect board – Rear View



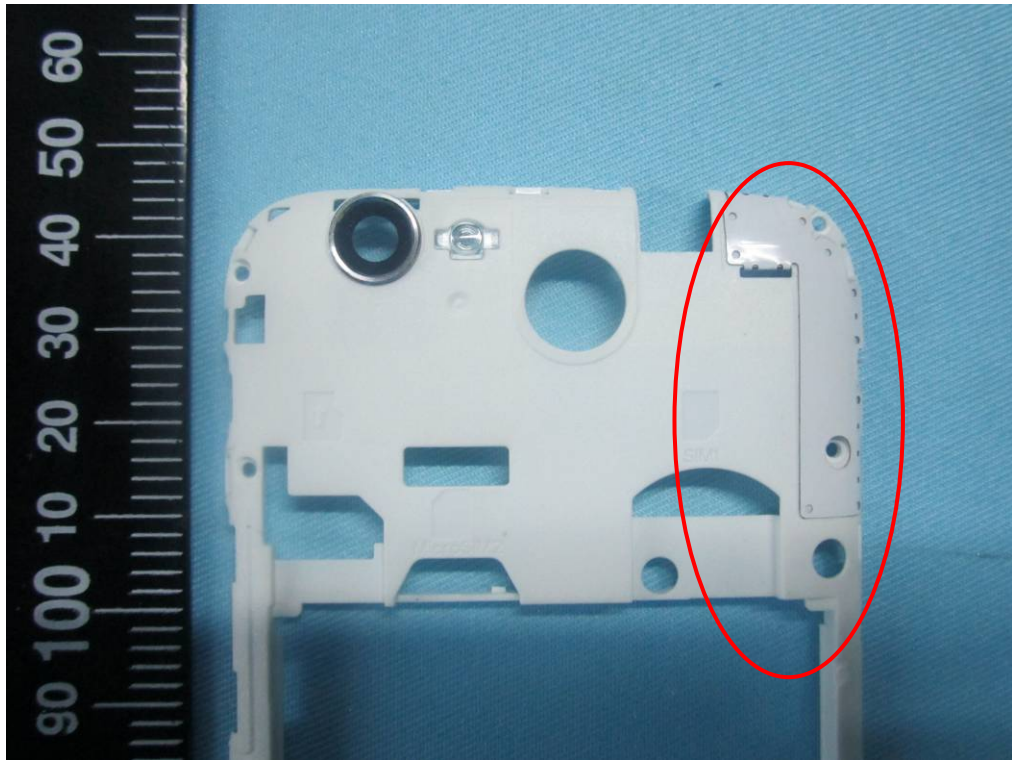
Mainboard With Shielding - Front View



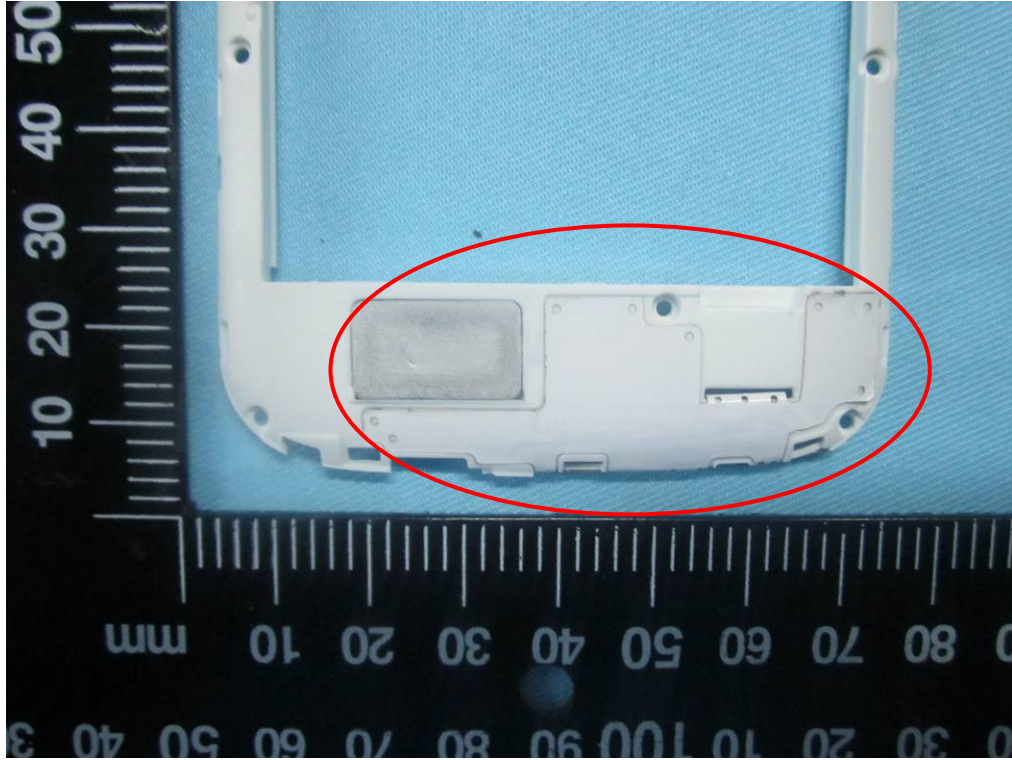
Mainboard Without Shielding - Front View



Mainboard – Rear View



BT/BLE/WIFI Antenna View



GSM/PCS/UMTS-FDD Antenna

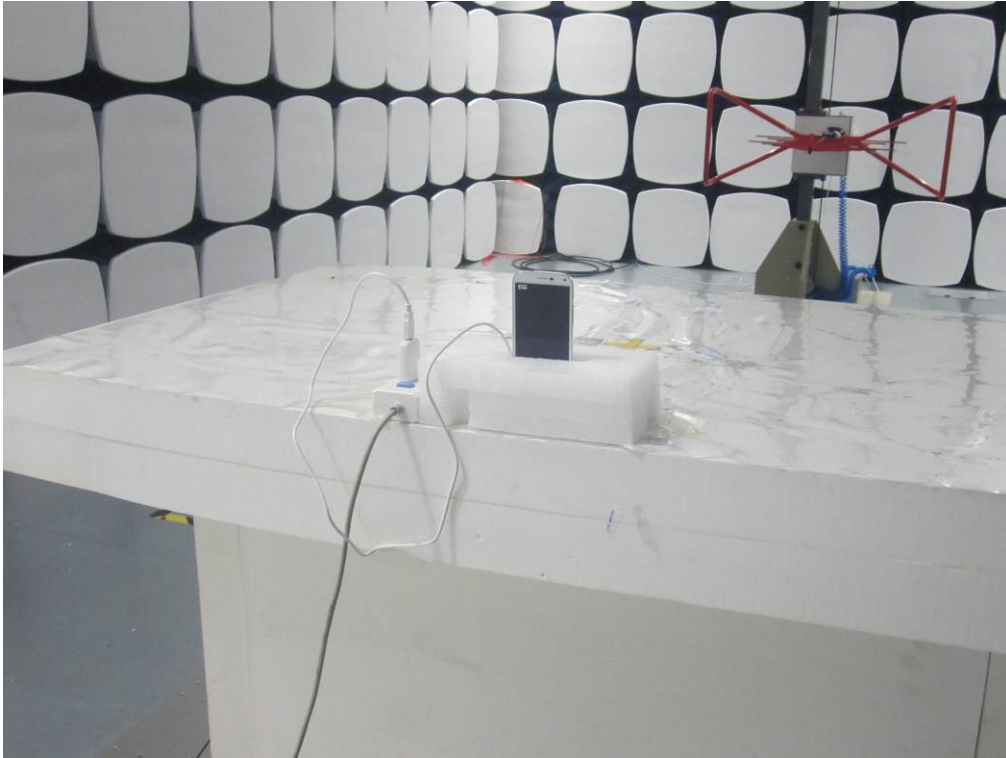
Annex B.iii. Photograph 3: Test Setup Photo



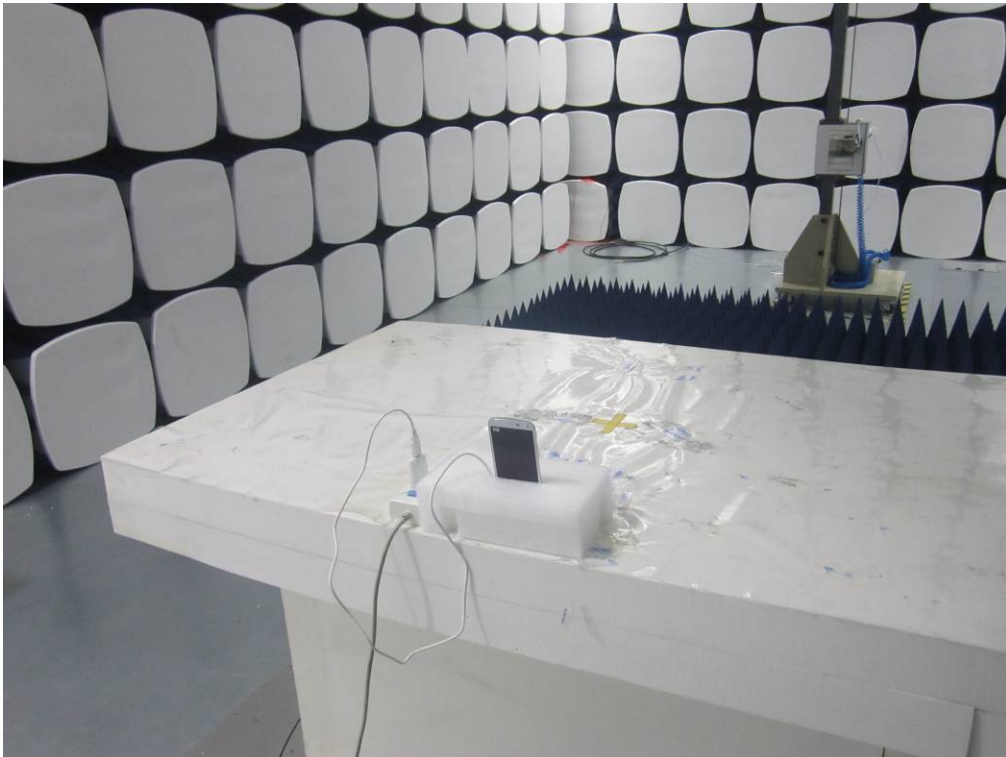
Conducted Emissions Test Setup Front View



Conducted Emissions Test Setup Side View



Radiated Spurious Emissions Test Setup Below 1GHz - Front View



Radiated Spurious Emissions Test Setup Above 1GHz –Front View

Annex C. TEST SETUP AND SUPPORTING EQUIPMENT

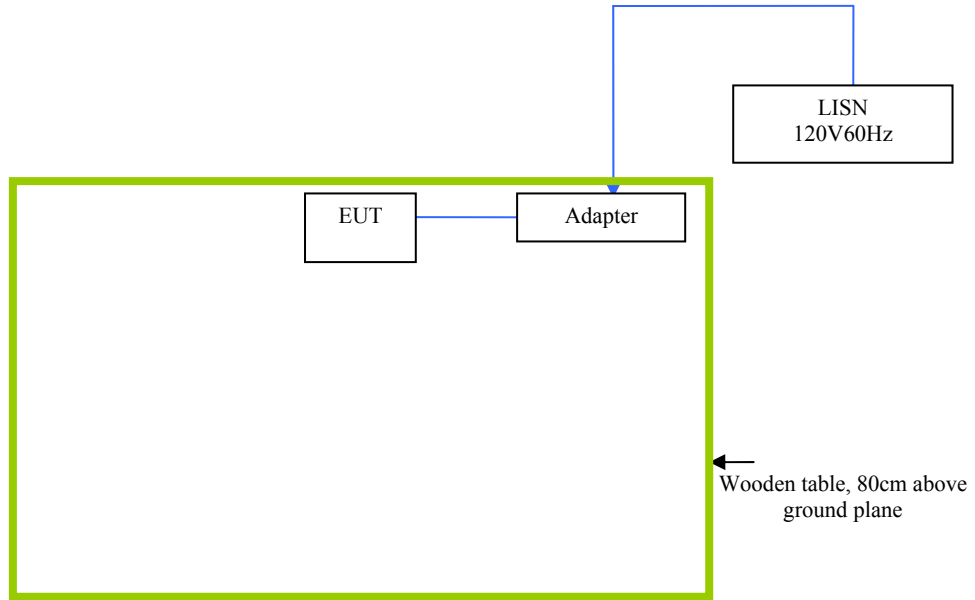
EUT TEST CONDITIONS

Annex C. i. SUPPORTING EQUIPMENT DESCRIPTION

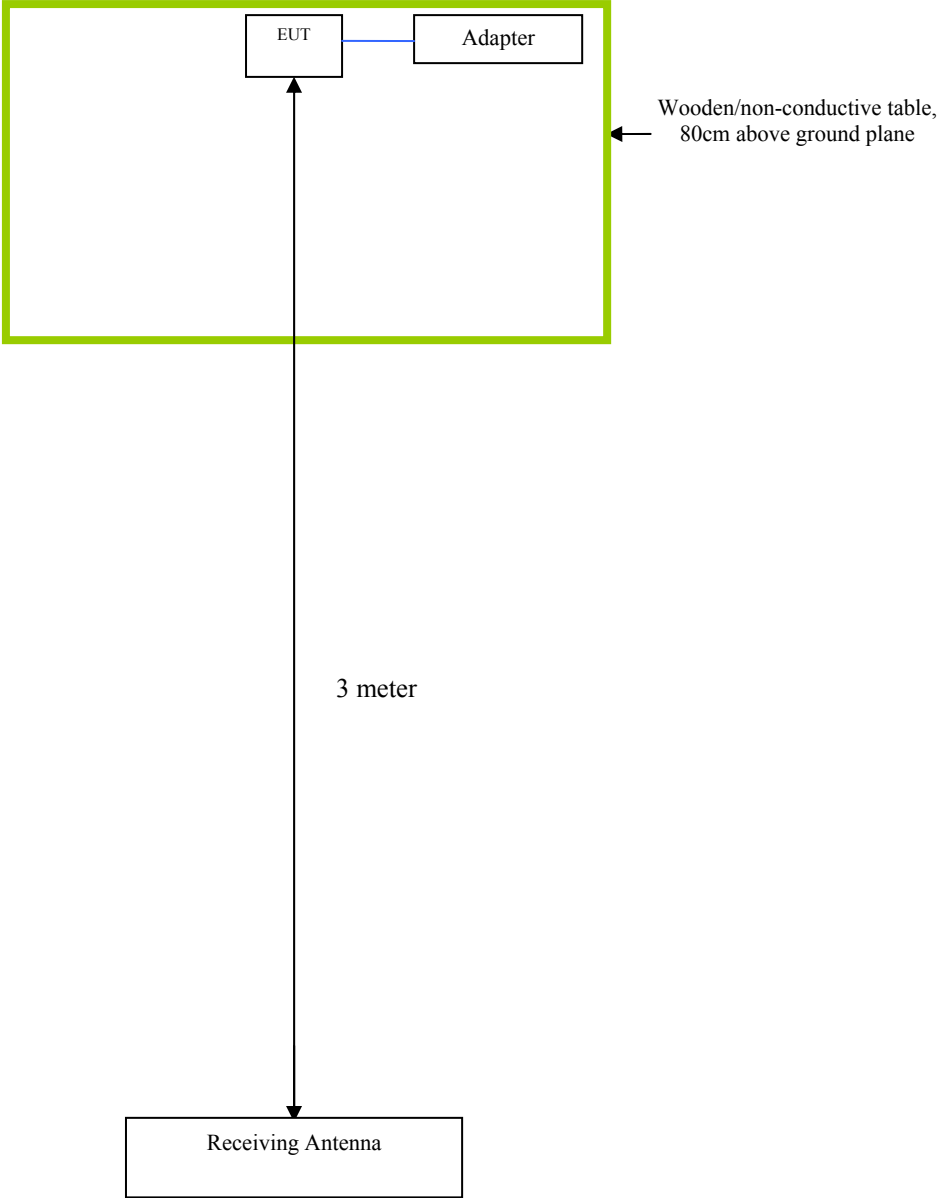
The following is a description of supporting equipment and details of cables used with the EUT.

Manufacturer	Equipment Description (Including Brand Name)	Model	Calibration Date	Calibration Due Date
N/A	N/A	N/A	N/A	N/A

Block Configuration Diagram for AC Line Conducted Emissions



Block Configuration Diagram for Radiated Emissions



Annex C. ii. EUT OPERATING CONDITIONS

The following is the description of how the EUT is exercised during testing.

Test	Description Of Operation
Emissions Testing	The EUT was continuously transmitting to stimulate the worst case.

Annex D. USER MANUAL / BLOCK DIAGRAM / SCHEMATICS / PART LIST

Please see attachment



SIEMIC, INC.

Accessing global markets

Title: RF Test Report for Mobile Phone
Main Model: s505
Serial Model: N/A
To: FCC Part 15.247: 2013, ANSI C63.4: 2009

Report No.: 14070214-FCC-R4
Issue Date: June 18 , 2014
Page: 52 of 52
www.siemic.com
www.siemic.com.cn

Annex E. DECLARATION OF SI

N/A