



SIEMIC, INC.

Accessing global markets

Title: EMC Test Report for GSM Mobile Phone
Main Model: S400
Serial Model: N/A
To: FCC Part 15 Subpart B Class B: 2012 , ANSI C63.4:2009

Report No.: 13070137-FCC-E
Issue Date: July 05, 2013
Page: 23 of 36
www.siemic.com.cn

Annex B.ii. Photograph 2: EUT Internal Photo



Cover Off - Top View



Cover Off - Front Housing View



SIEMIC, INC.

Accessing global markets

Title: EMC Test Report for GSM Mobile Phone
Main Model: S400
Serial Model: N/A
To: FCC Part 15 Subpart B Class B: 2012 , ANSI C63.4:2009

Report No.: 13070137-FCC-E
Issue Date: July 05, 2013
Page: 24 of 36
www.siemic.com.cn



Cover Off - Rear Housing View



Adapter View



SIEMIC, INC.

Accessing global markets

Title: EMC Test Report for GSM Mobile Phone
Main Model: S400
Serial Model: N/A
To: FCC Part 15 Subpart B Class B: 2012, ANSI C63.4:2009

Report No.: 13070137-FCC-E
Issue Date: July 05, 2013
Page: 25 of 36
www.siemic.com.cn



Battery - Top View



Battery - Bottom View

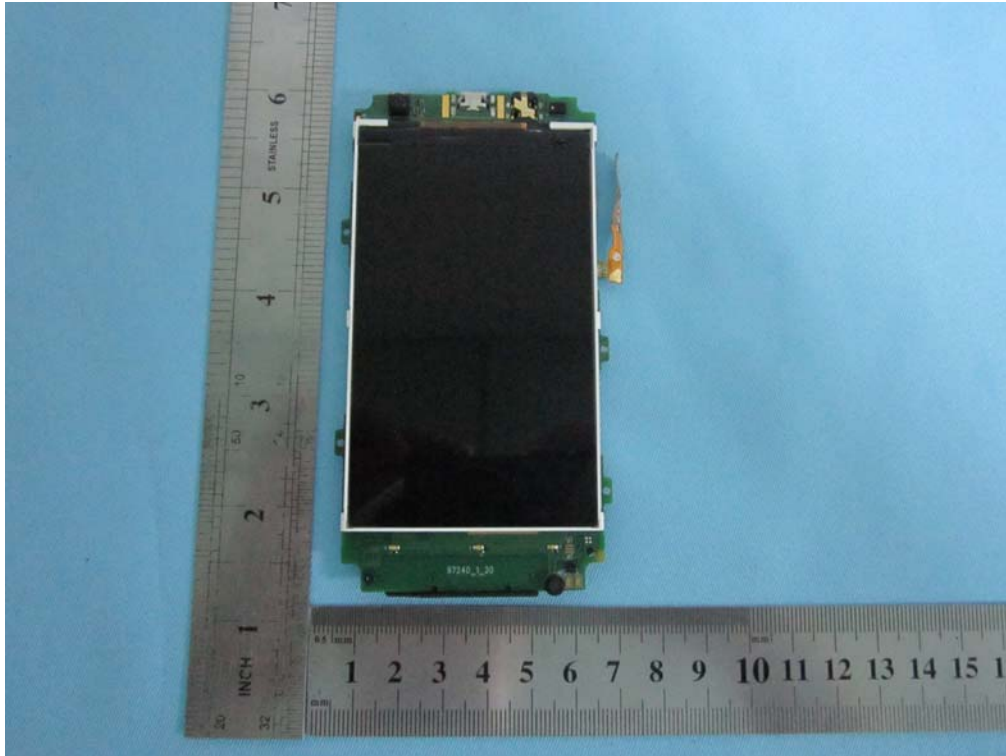


SIEMIC, INC.

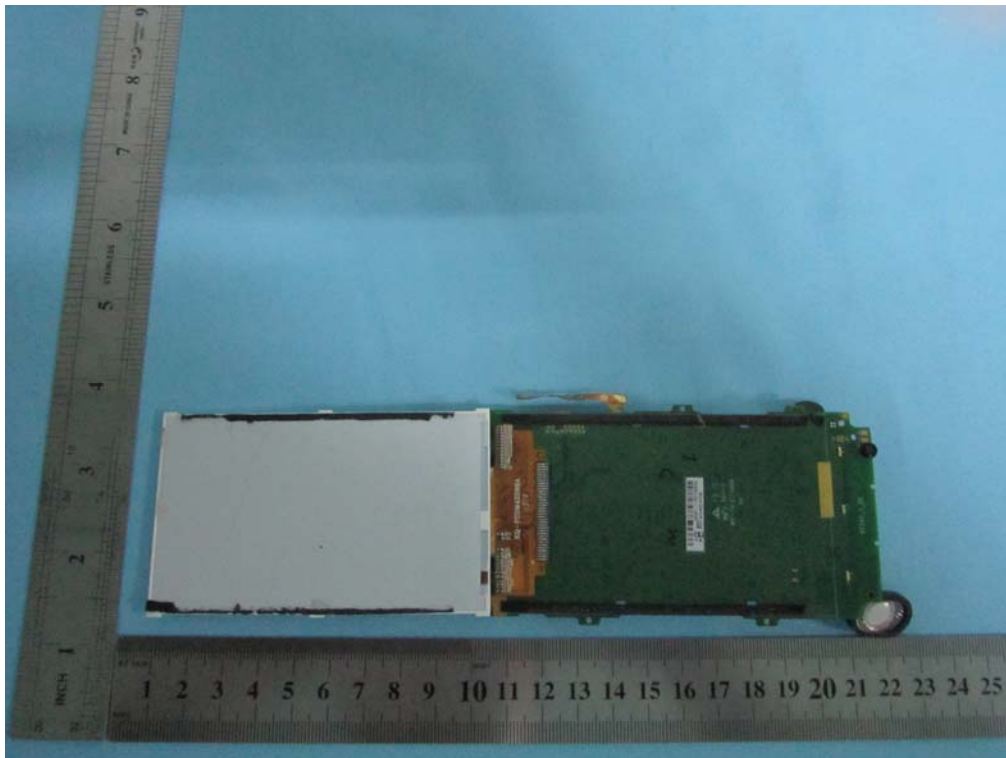
Accessing global markets

Title: EMC Test Report for GSM Mobile Phone
Main Model: S400
Serial Model: N/A
To: FCC Part 15 Subpart B Class B: 2012 , ANSI C63.4:2009

Report No.: 13070137-FCC-E
Issue Date: July 05, 2013
Page: 26 of 36
www.siemic.com.cn



Mainborad - Top View



Mainborad Uncover - Top View



SIEMIC, INC.

Accessing global markets

Title: EMC Test Report for GSM Mobile Phone
Main Model: S400
Serial Model: N/A
To: FCC Part 15 Subpart B Class B: 2012, ANSI C63.4:2009

Report No.: 13070137-FCC-E
Issue Date: July 05, 2013
Page: 27 of 36
www.siemic.com.cn



Mainboard - Bottom View



Mainboard Without Shielding - Bottom View



SIEMIC, INC.

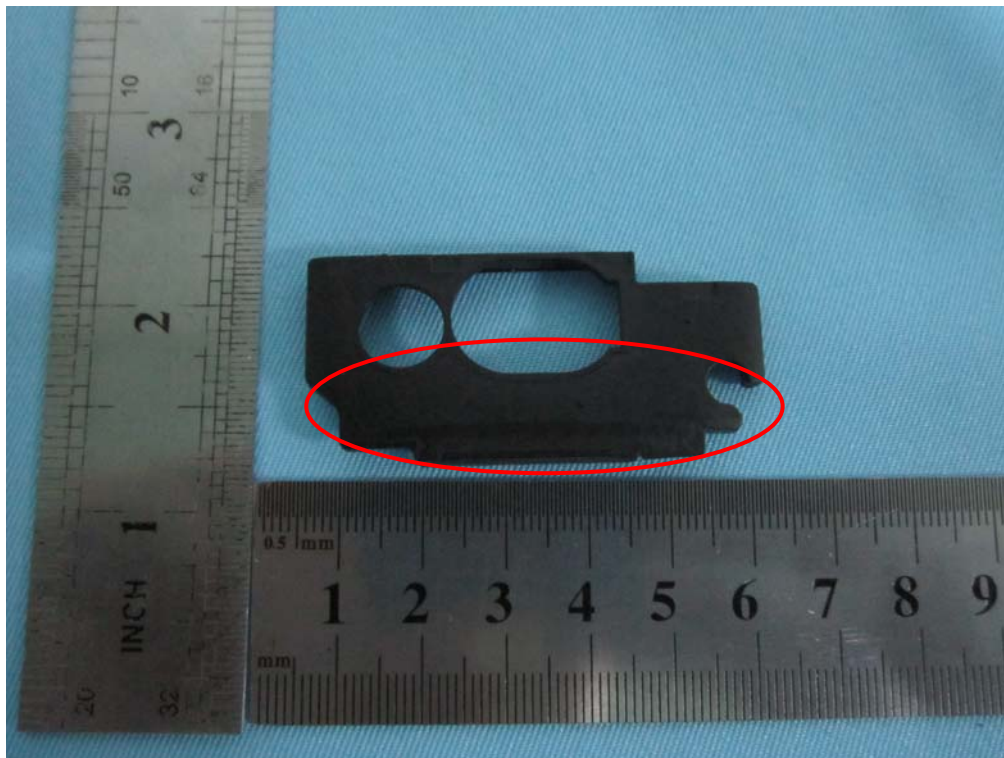
Accessing global markets

Title: EMC Test Report for GSM Mobile Phone
Main Model: S400
Serial Model: N/A
To: FCC Part 15 Subpart B Class B: 2012 , ANSI C63.4:2009

Report No.: 13070137-FCC-E
Issue Date: July 05, 2013
Page: 28 of 36
www.siemic.com.cn



Bluetooth / BLE / WIFI Antenna View



GSM / PCS/ UMTS Antenna View