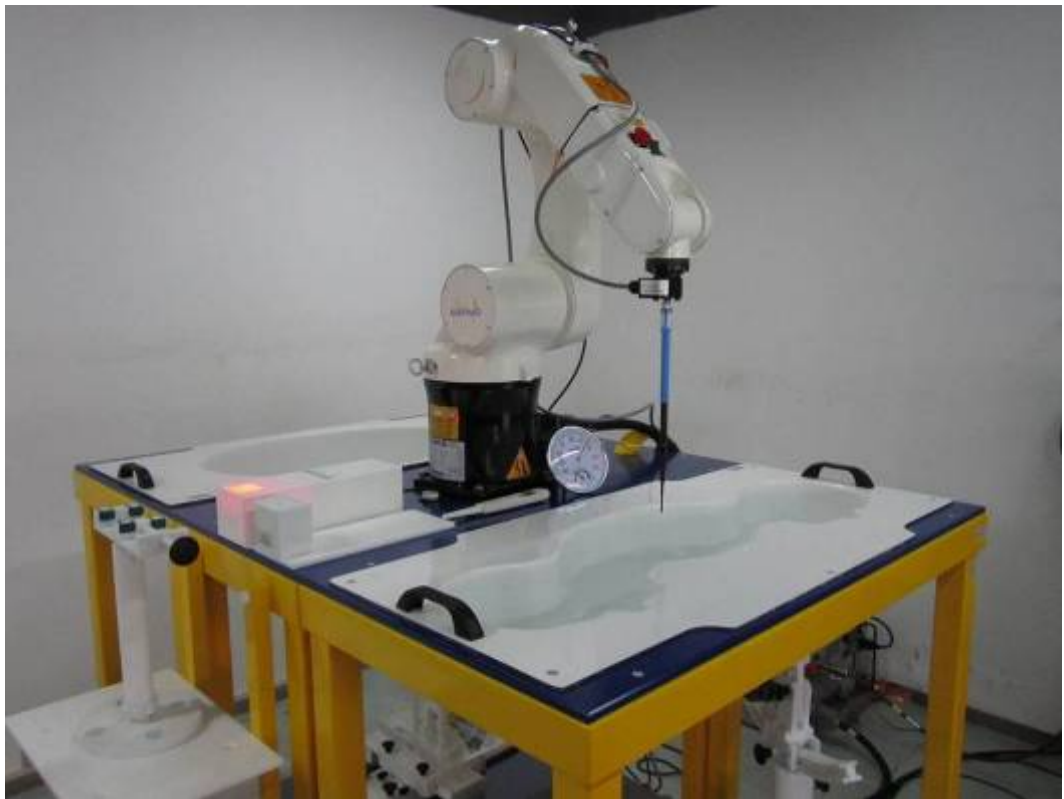


**Annex B SAR System PHOTOGRAPHS**

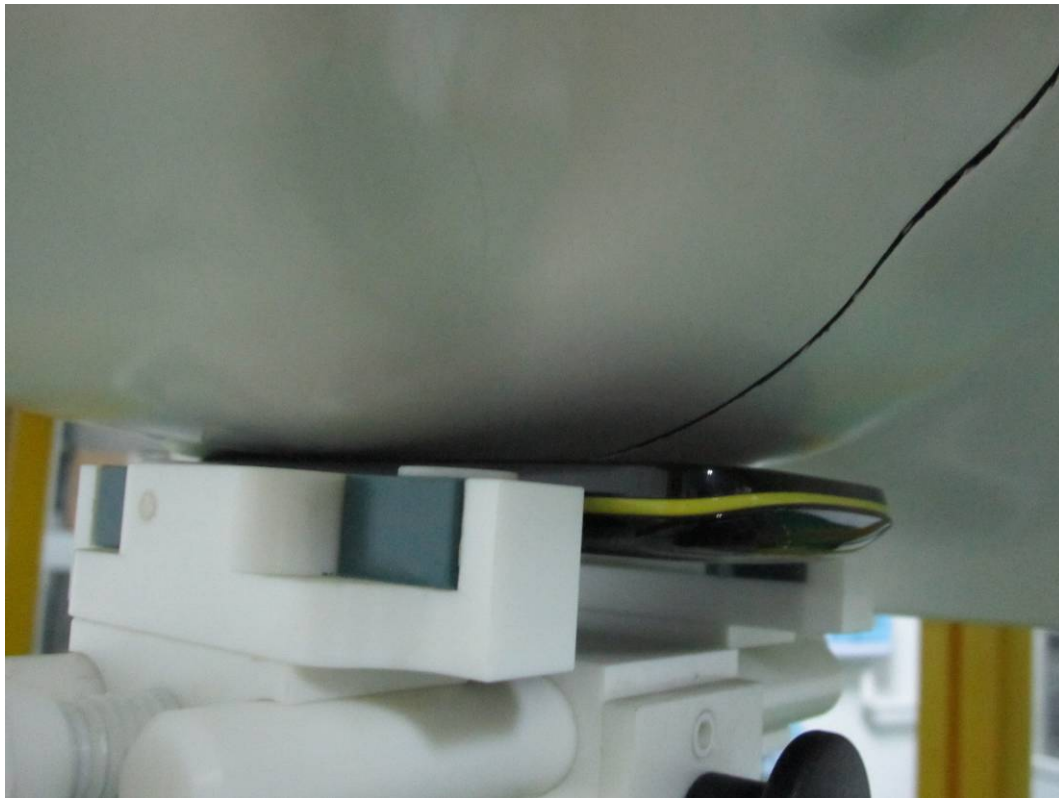


Liquid depth  $\geq$  15cm

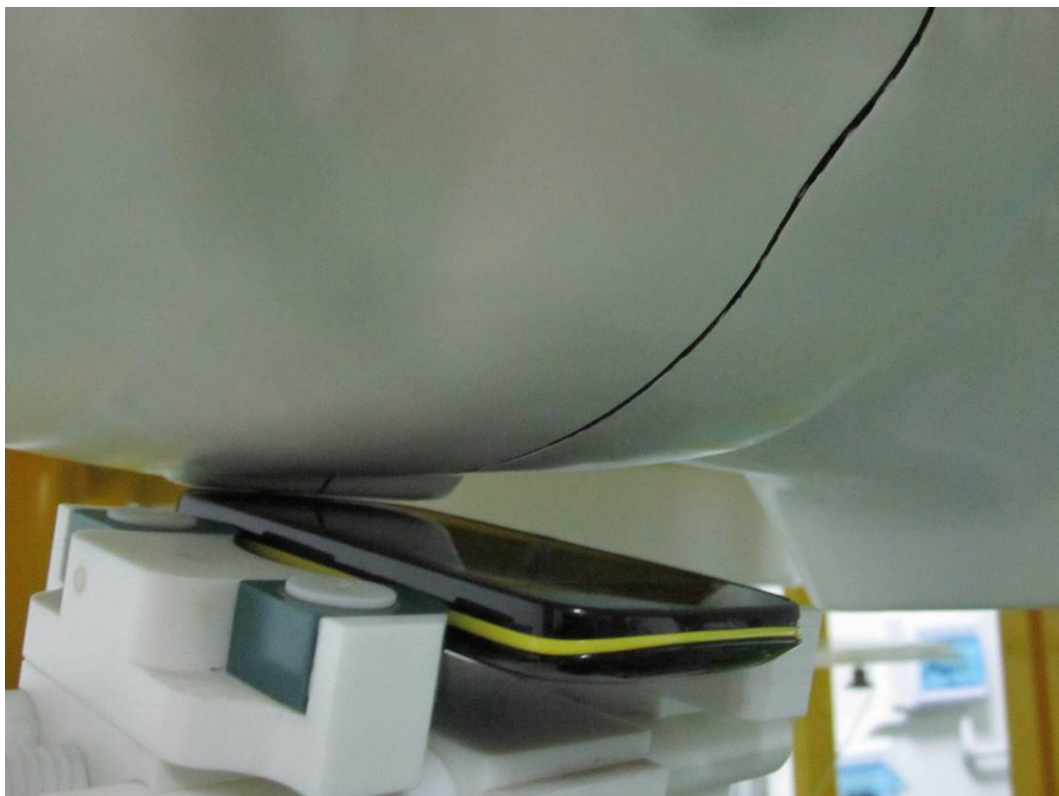


## **Annex C SETUP PHOTOGRAPHS**

**Right Head Touch View**



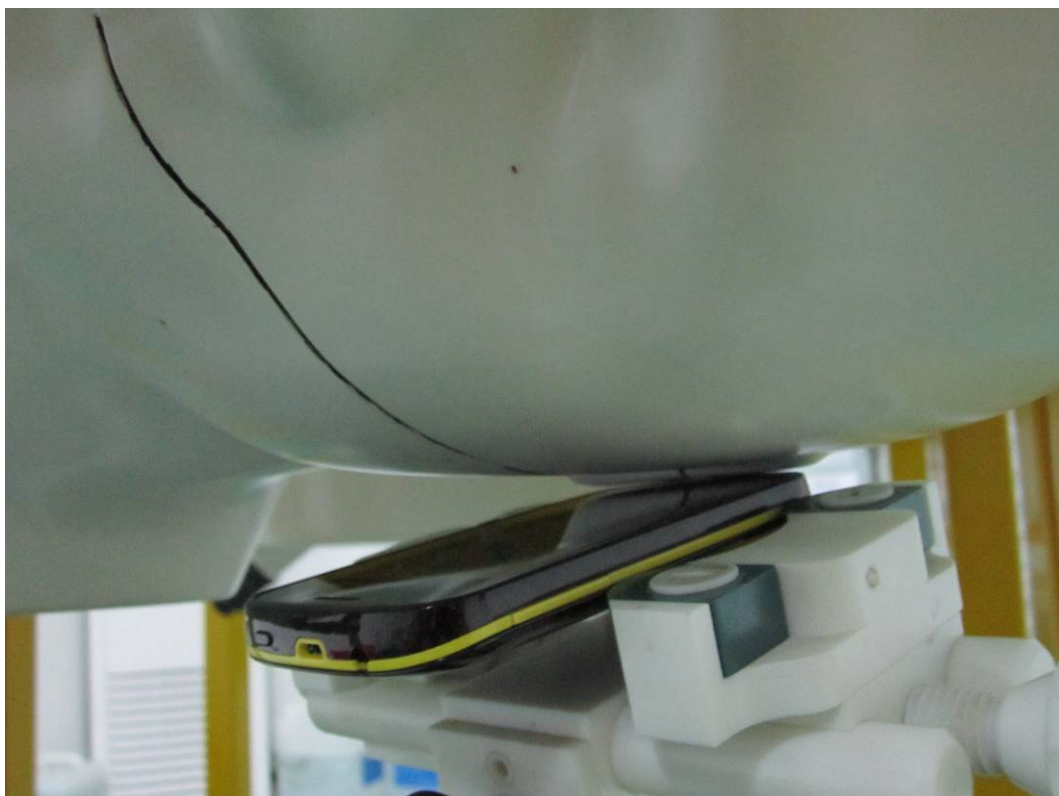
**Right Head Tilt View**



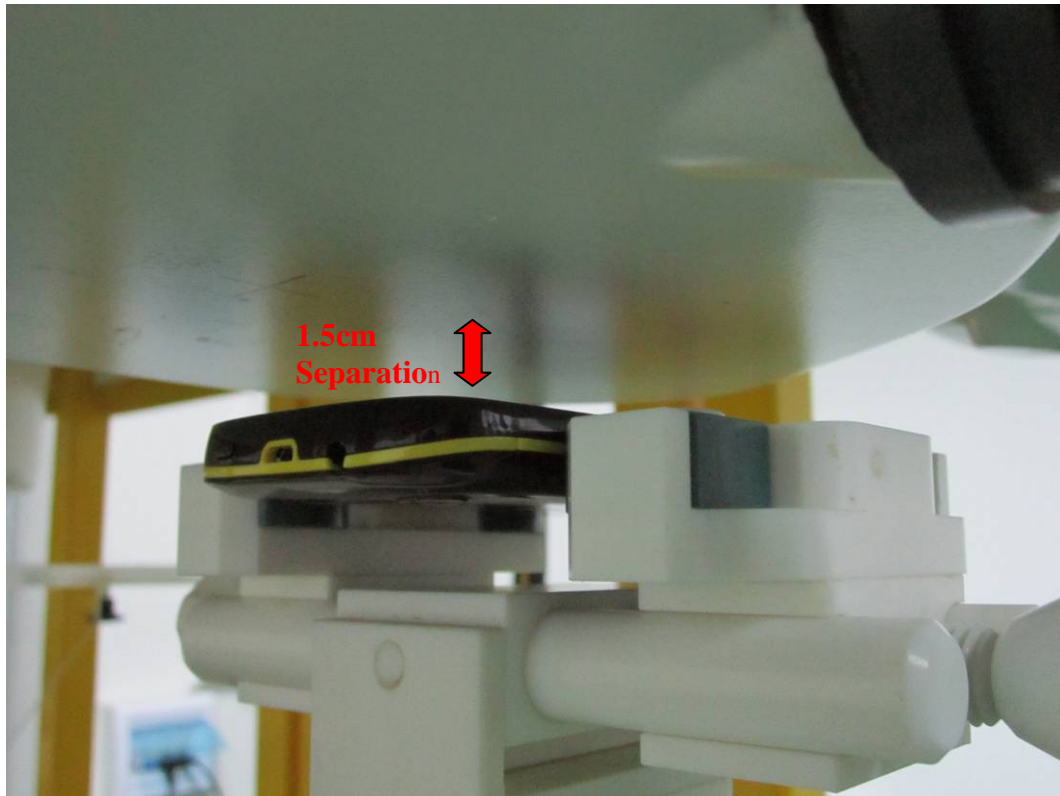
### Left Head Touch View



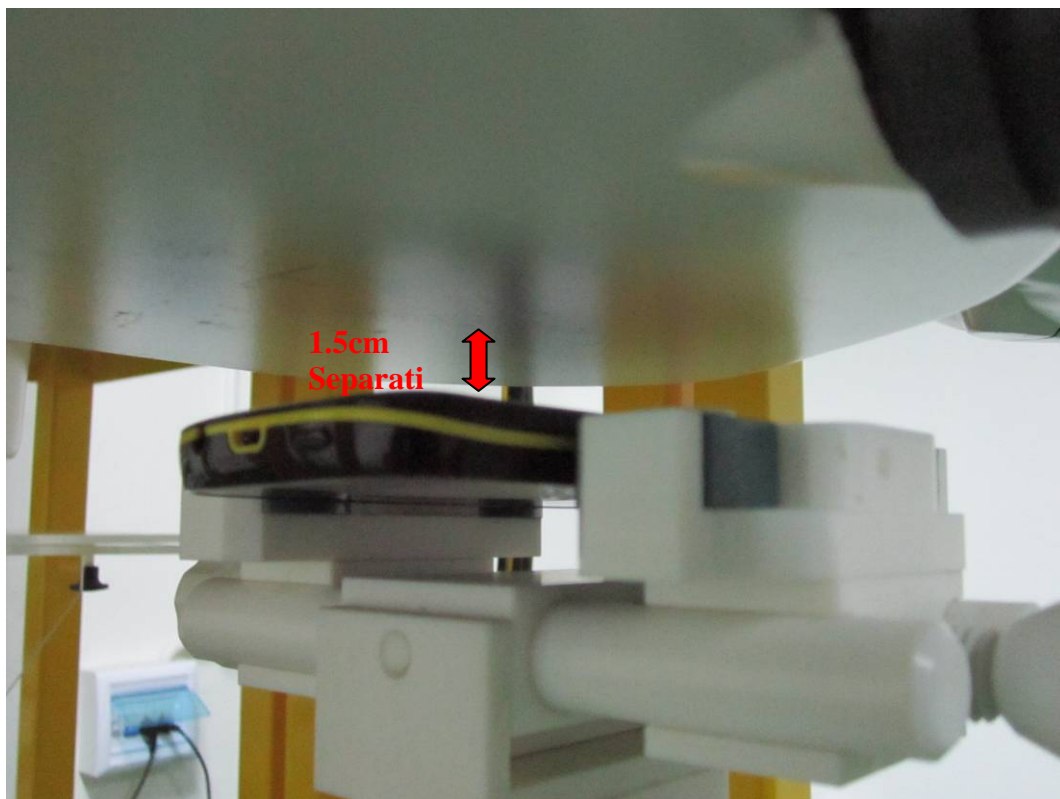
### Left Head Tilt View



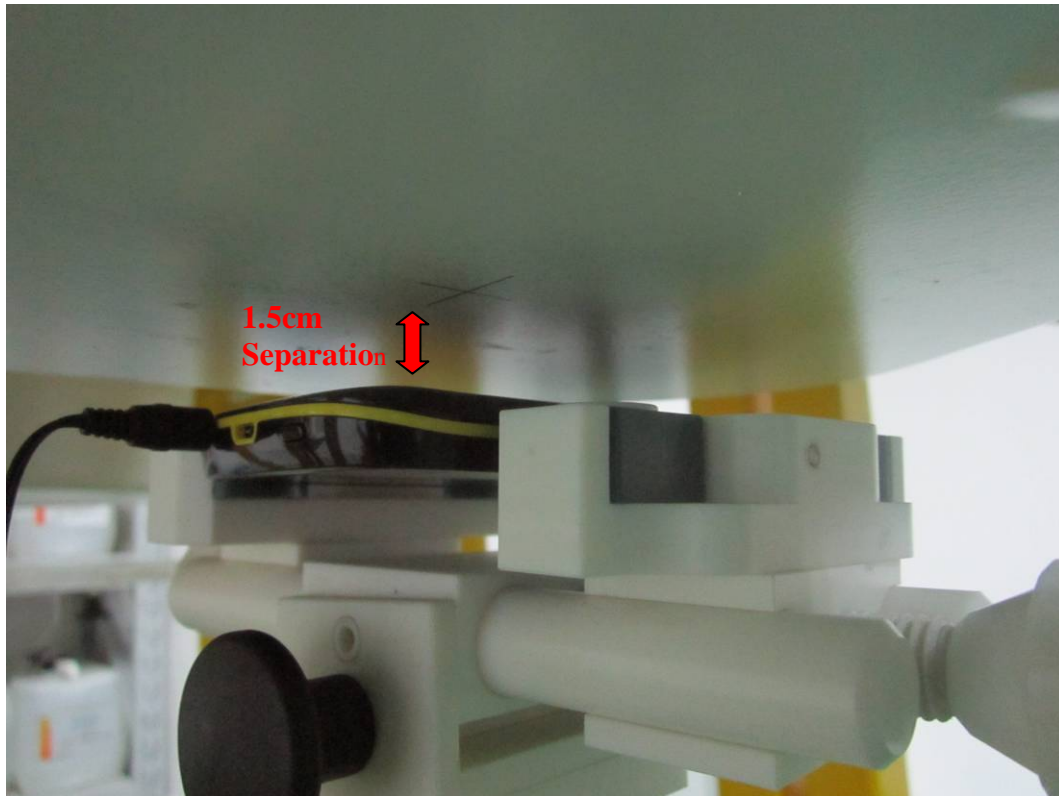
**Body Setup Photo (LCD UP)**



**Body Setup Photo (LCD DOWN)**



### Body Setup Photo (LCD DOWN With Headset)



**Annex D EUT PHOTOGRAPHS**

**EUT-Front Side View**



**EUT-Back Side View**



## EU-Uncover View



## EU-Top View

