

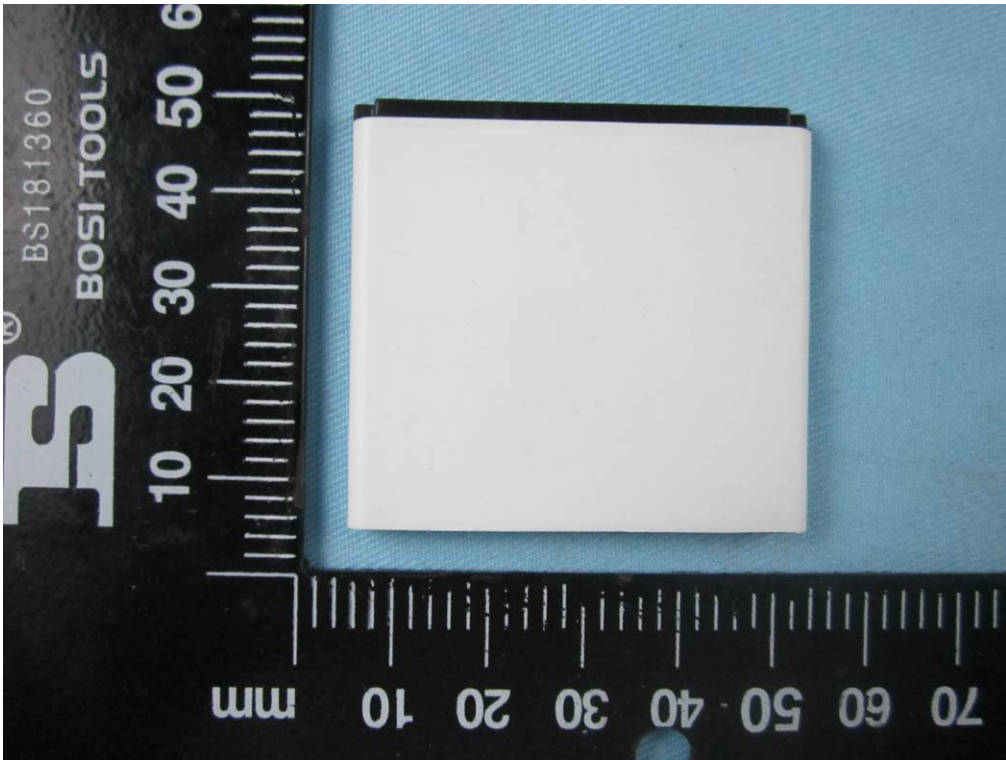
Photograph 2: EUT Internal Photo



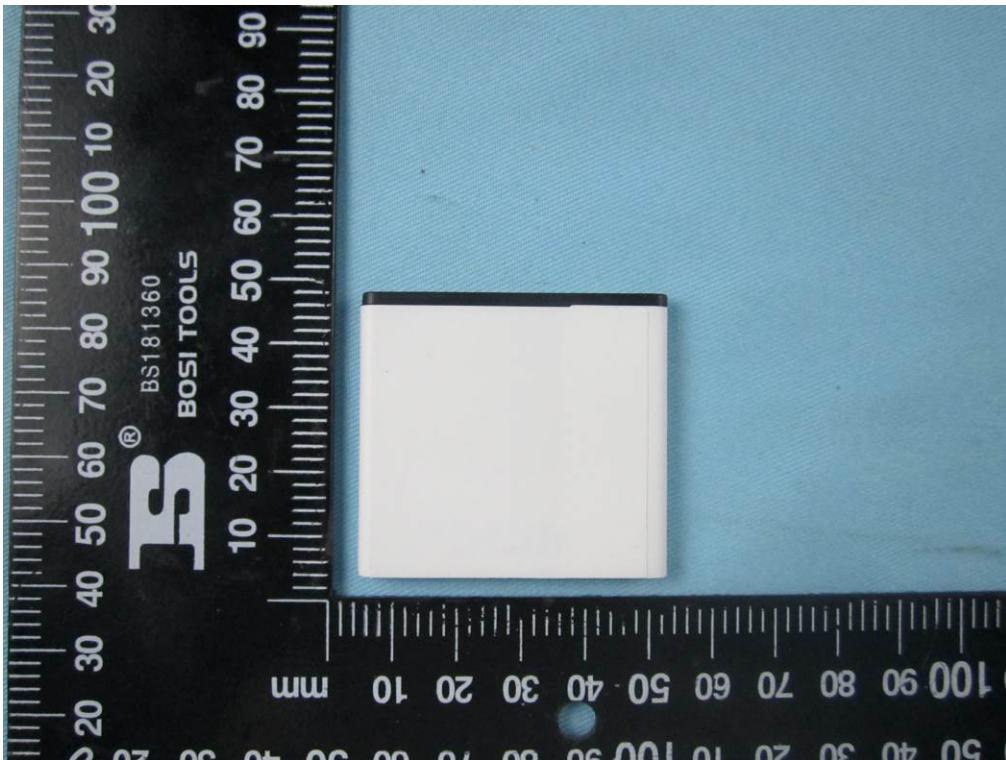
Cover Off - Top View 1



Cover Off - Top View 2



Battery - Top View



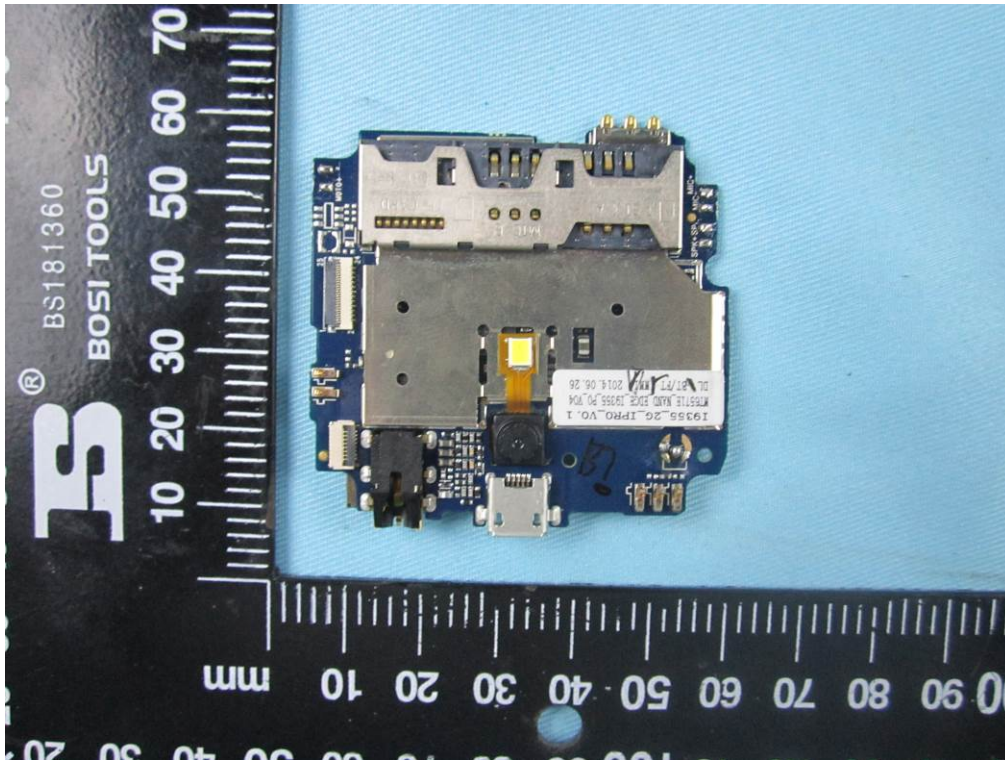
Battery - Bottom View



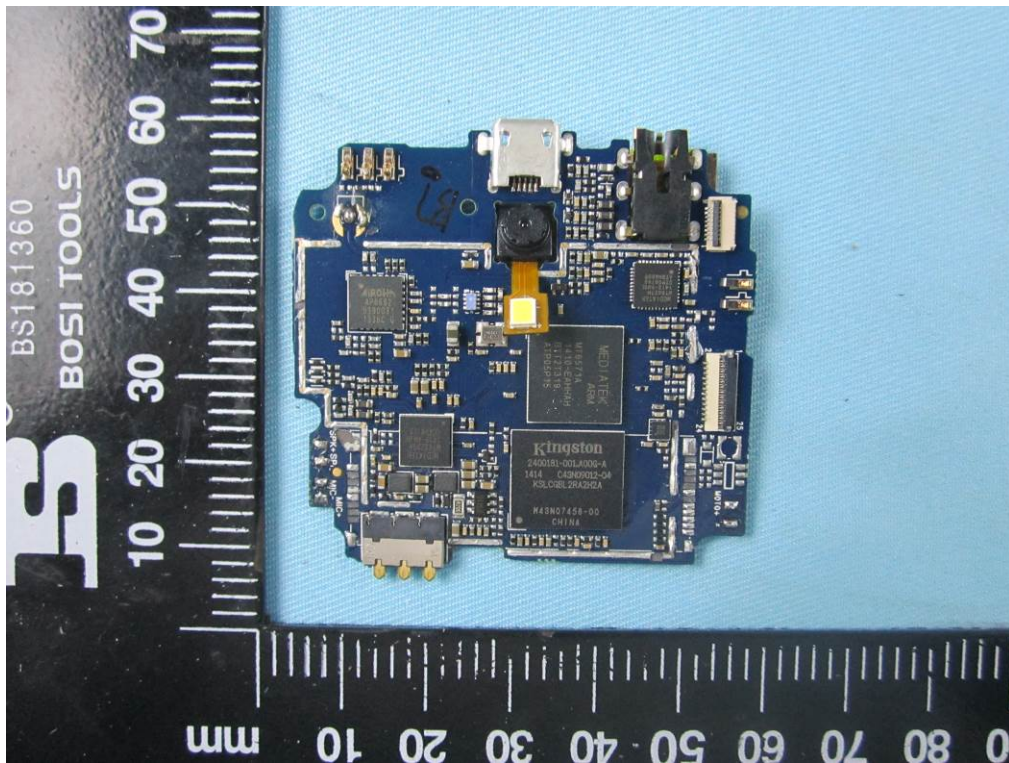
LCD – Front View



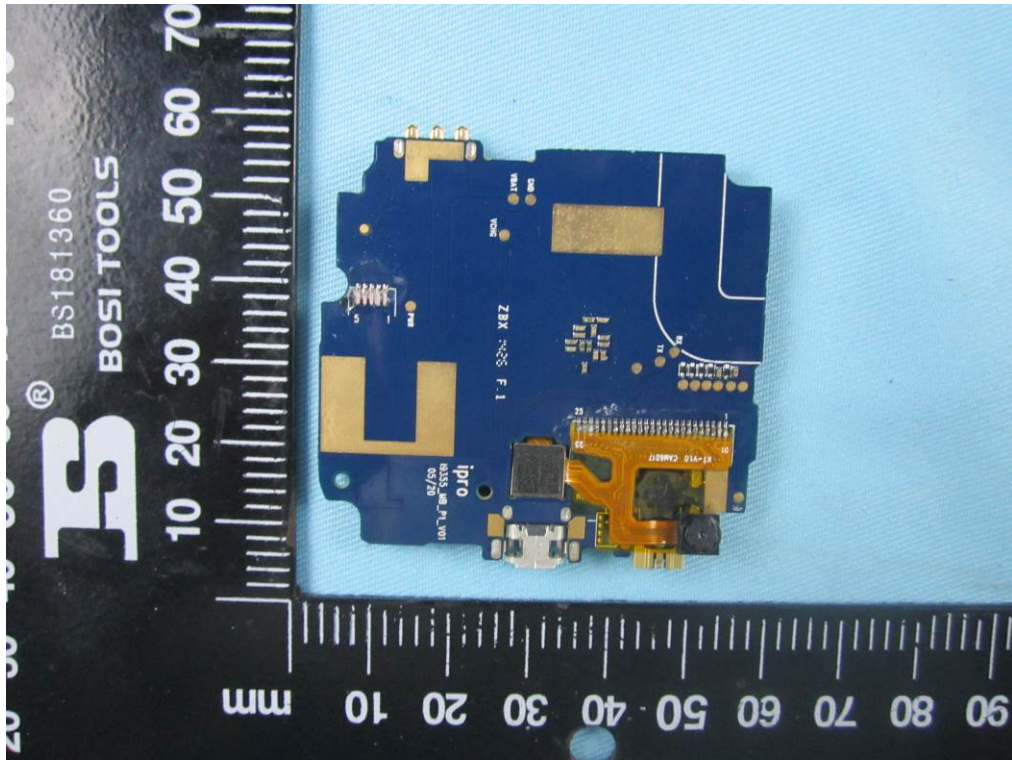
LCD – Rear View



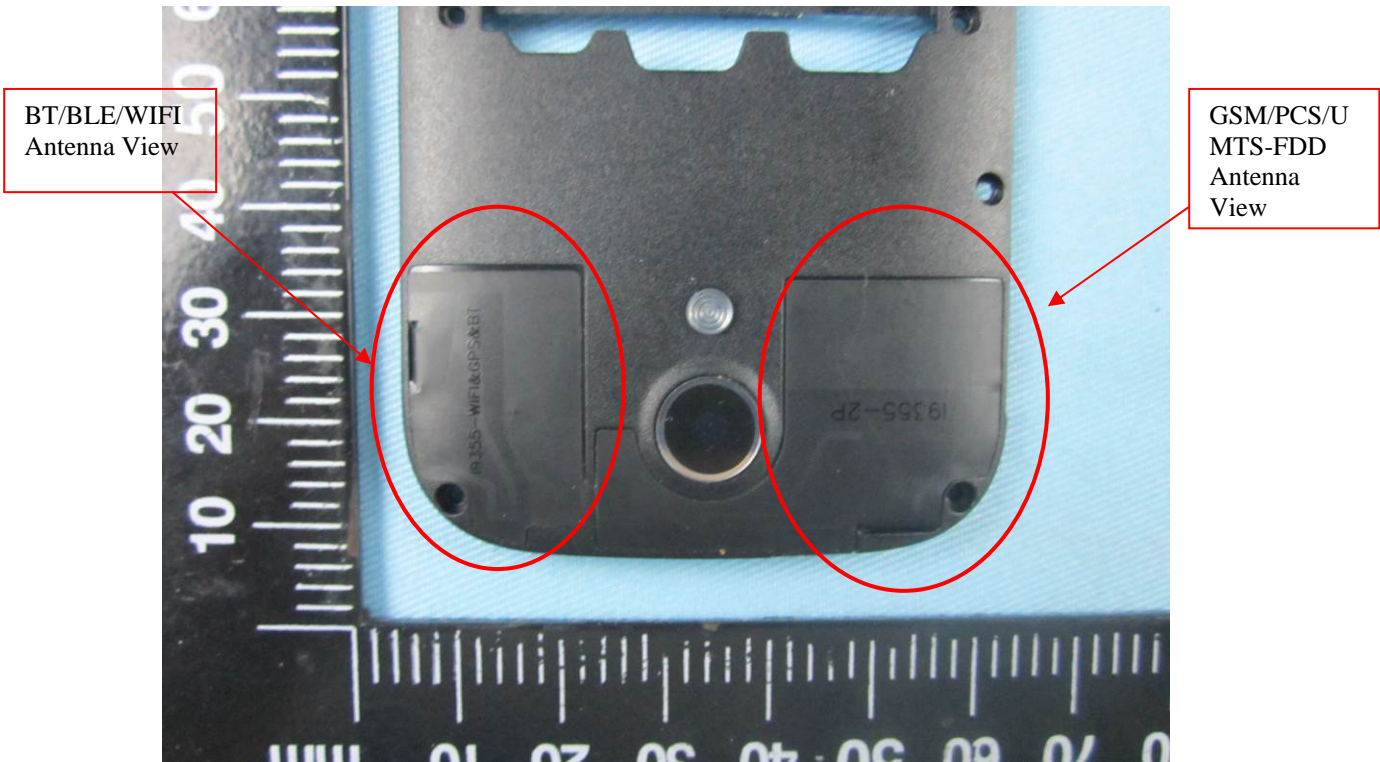
Mainboard With Shielding - Front View



Mainboard Without Shielding - Front View



Mainboard – Rear View



BT/BLE/WIFI/GSM/PCS/UMTS-FDD Antenna View