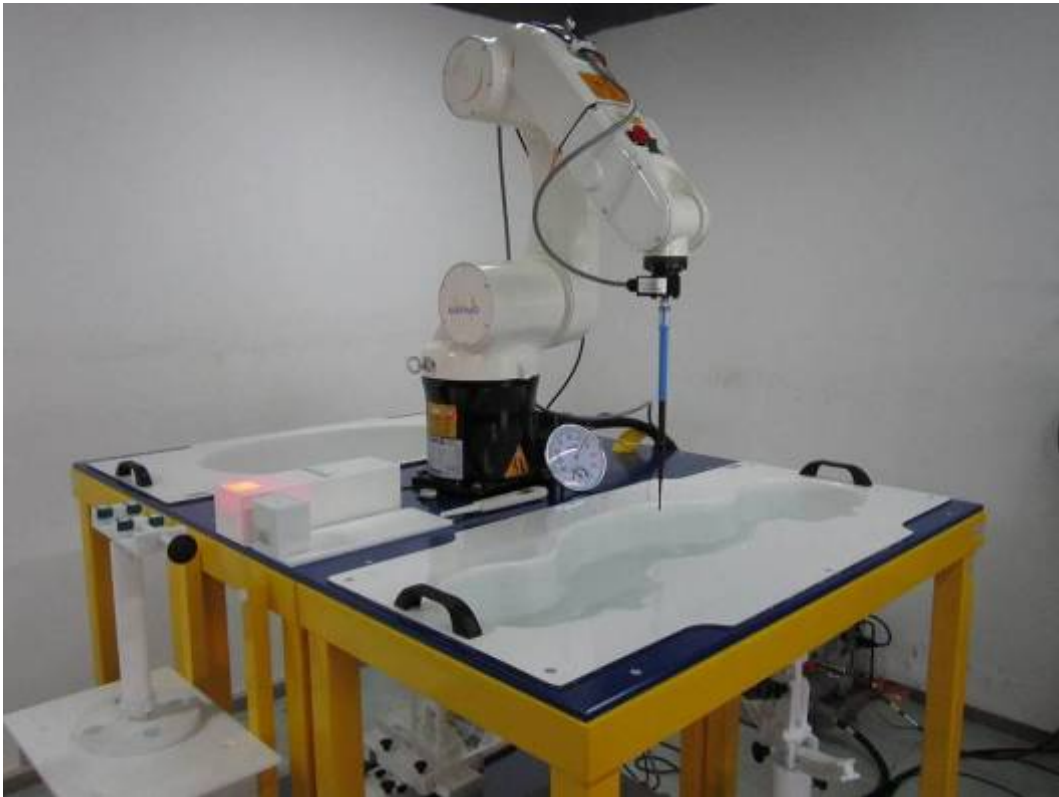


Annex B SAR System PHOTOGRAPHS

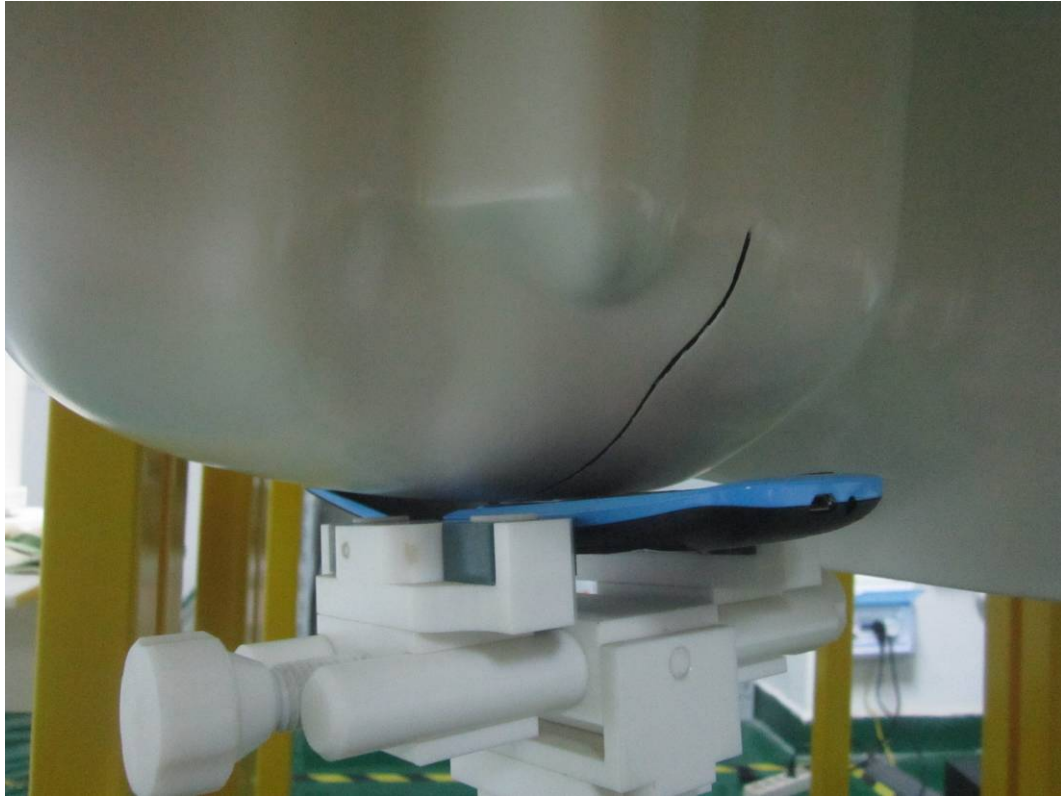


Liquid depth \geq 15cm

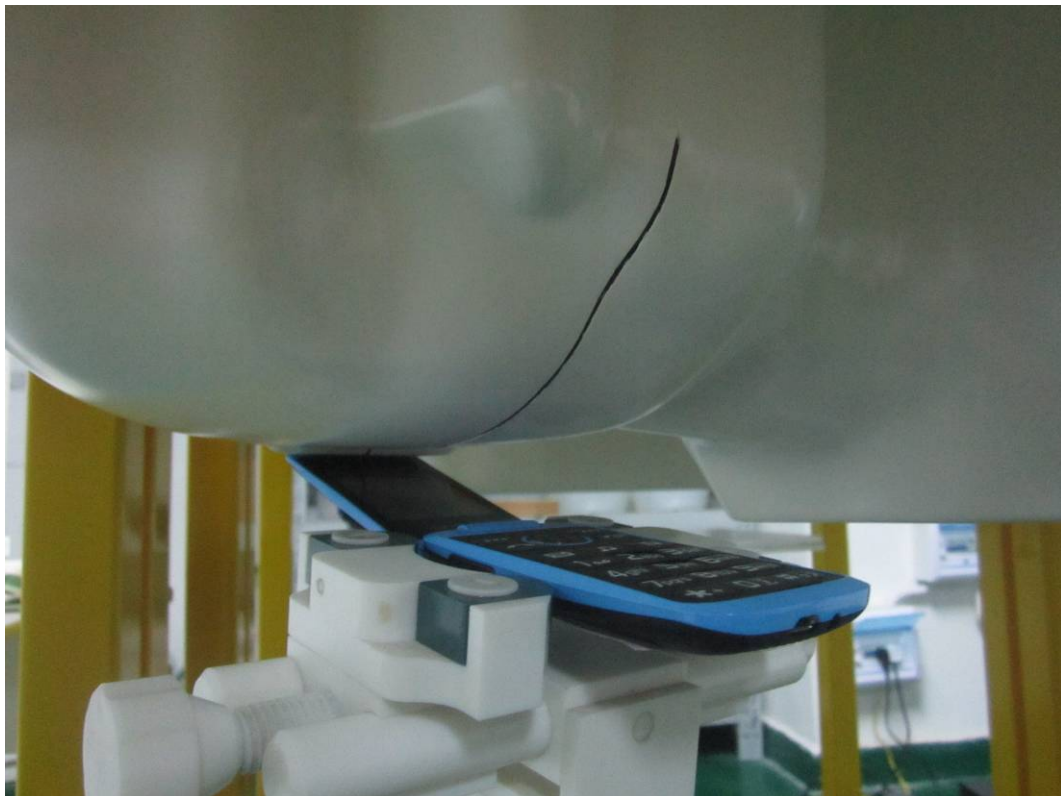


Annex C SETUP PHOTOGRAPHS

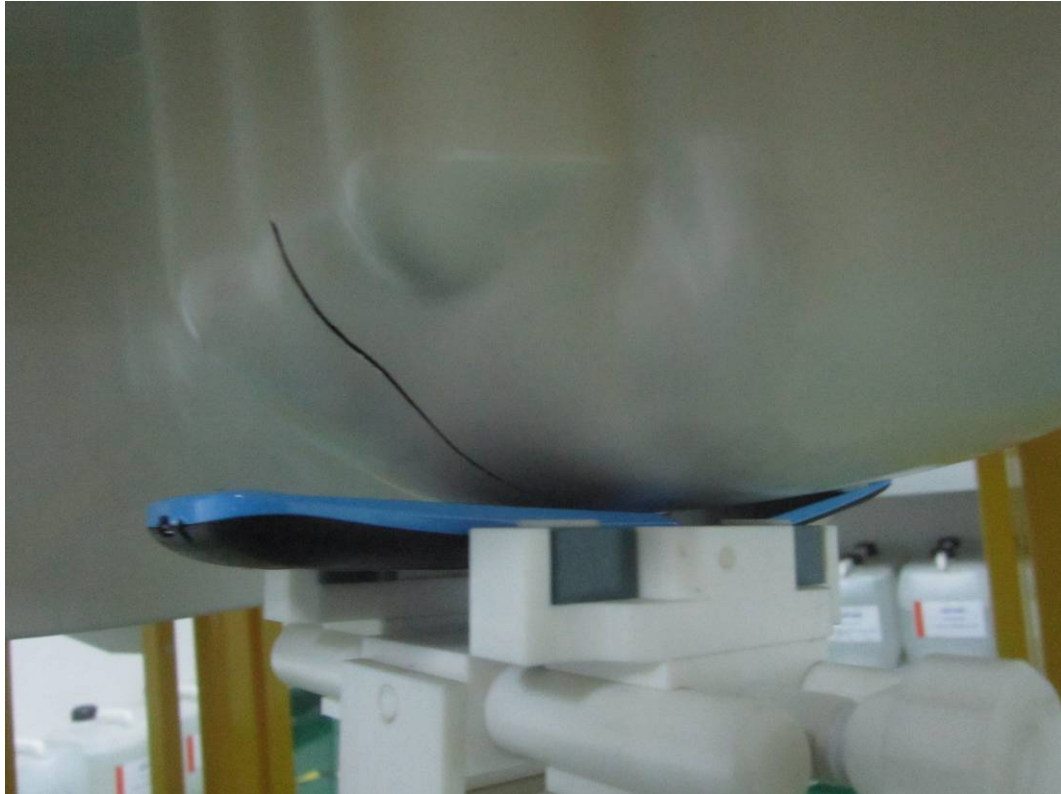
Right Head Touch View



Right Head Tilt View



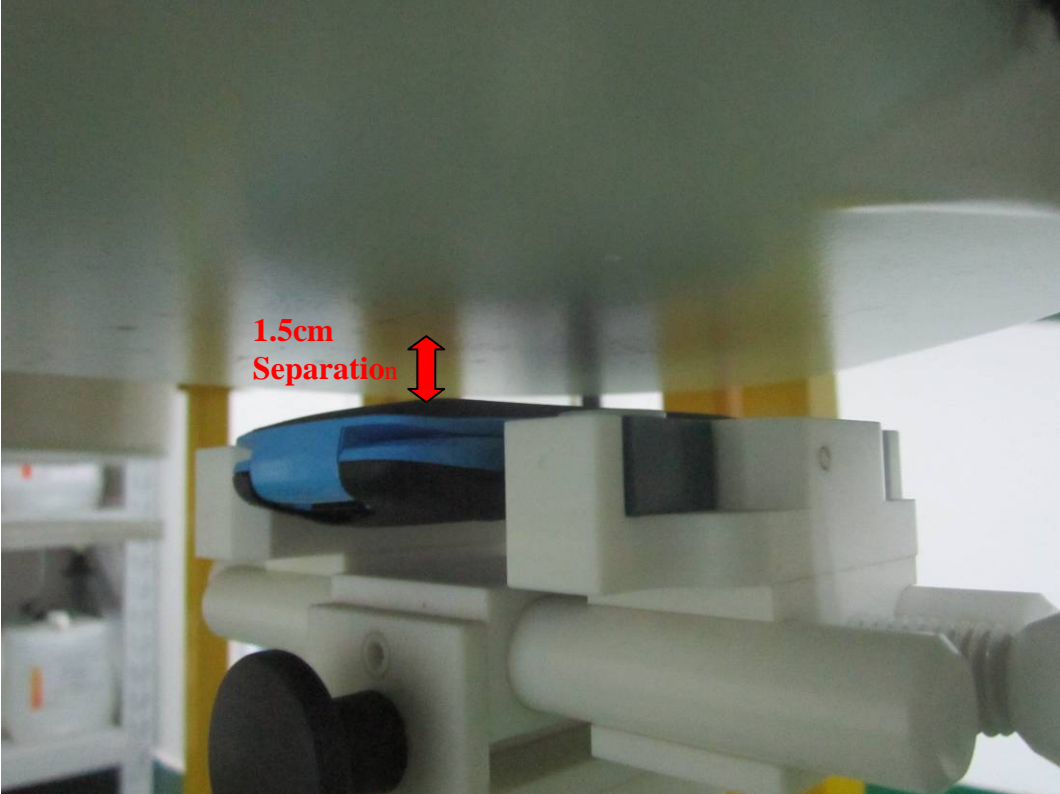
Left Head Touch View



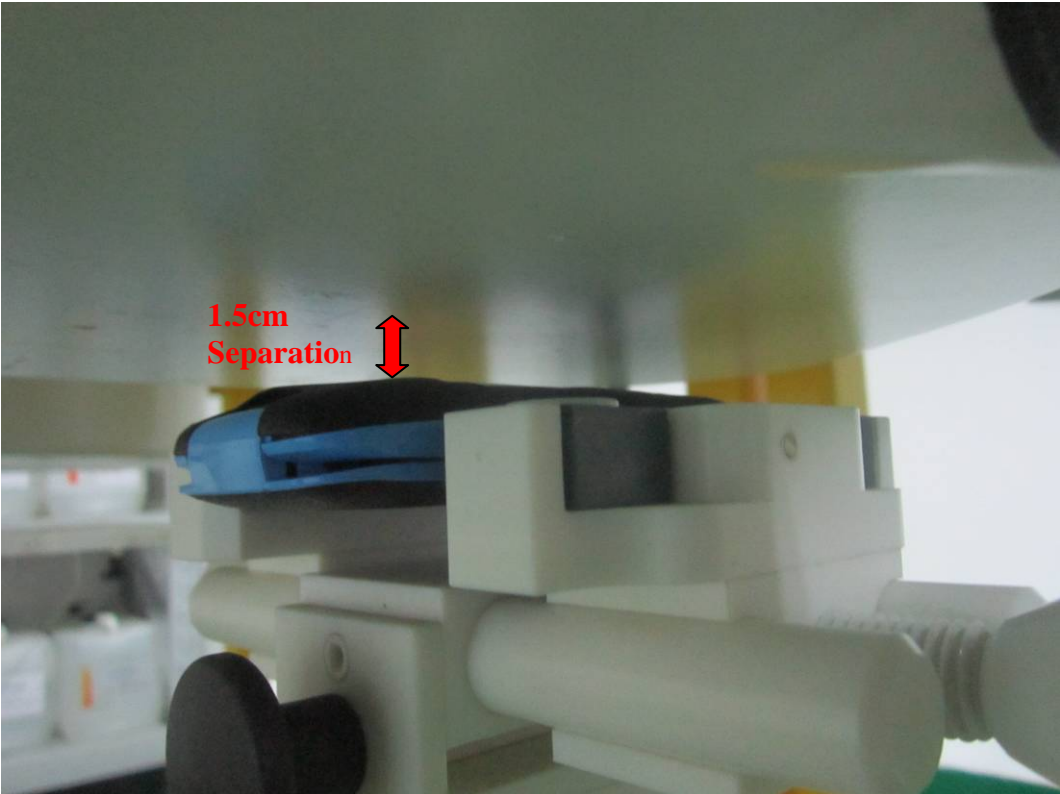
Left Head Tilt View



Body Setup Photo (LCD UP)



Body Setup Photo (LCD DOWN)



Annex D EUT PHOTOGRAPHS

EUT-Front Side View



EUT-Back Side View

