

Aranet CO₂ SENSOR Datasheet



Aranet CO₂ SENSOR

Measurements	CO ₂ (carbon dioxide)	
Line-of-sight range	3 km/ 1.9mi	
Operating environment	Indoor use	
Transmitter power	14 dBm	
Frequency	Depends on gateway instructions	
Measurement range	CO ₂	0-9999 ppm
CO ₂ measurement accuracy	+/- 50 ppm or 3% of reading	
Data transmission	Every 10 minutes	
Data protection	Data encryption	
Power options	2 AAA Alkaline batteries (Zn/MnO ₂)	
	2 AAA Lithium batteries (Li/FeS ₂)	
Battery life @20°C / 68°F	Up to 2 years with Alkaline batteries	
	Up to 2 years with Lithium batteries	
Operating temperature	0°C to 50°C / 32°F to 122°F	
Operating humidity	0% to 100% non-condensing*	
Dimensions	115x44x25 mm/ 4.5x1.7x1 in	
Weight	67g /2.4oz with Alkaline batteries	
	59g/ 2oz with Lithium batteries	
Construction	ASA Plastic	
Protection class	IP40	
CE marking	Yes	
Included	2 AAA Alkaline batteries, string	

* Recommended humidity operating range is 20% to 80% .RH (non-condensing) over -10 °C to 60 °C/ 14°F to 140°F. Prolonged operation beyond these ranges may result in a shift of sensor reading, with slow recovery time.

Terms of use The Customer is obliged to guarantee the usage, maintenance and preservation of the Equipment at their own expense in a way that excludes the Equipment's theft, loss, destruction, harming and/or damaging (including as a result of mechanical damages, moisture, liquid related damages, lightning and/or other similar events).

FCC Compliance statement

This equipment has been tested and found to comply with the limits for a Class B digital device, pursuant to part 15 of the FCC Rules. These limits are designed to provide reasonable protection against harmful interference in a residential installation. This equipment generates, uses and can radiate radio frequency energy and, if not installed and used in accordance with the instructions, may cause harmful interference to radio communications. However, there is no guarantee that interference will not occur in a particular installation. If this equipment does cause harmful interference to radio or television reception, which can be determined by turning the equipment off and on, the user is encouraged to try to correct the interference by one or more of the following measures:

- Reorient or relocate the device.
- Increase the separation between the equipment and receiver.
- Connect the equipment into an outlet on a circuit different from the one the receiver is connected to.
- Consult the dealer or an experienced radio/TV technician for help.

This device complies with part 15 of the FCC rules. Operation is subject to the following two conditions:

- (1) this device may not cause harmful interference, and
- (2) this device must accept any interference received, including interference that may cause undesired operation.

Important Exposure to Radio Frequency Radiation.

20 cm distance has to be maintained between the antenna and user. Under such configuration, the FCC radiation exposure limits set forth for an population/uncontrolled environment can be satisfied.



Changes or modifications not expressly approved by the party responsible for compliance could void the user's authority to operate the equipment. Aranet devices do not contain serviceable parts. Warranty will not be applicable in the event Aranet devices have been opened.

The information presented in this guide is the property of SAF Tehnika, JSC. No part of this document may be reproduced or transmitted without proper permission from SAF Tehnika, JSC.

The specifications or information contained in this document are subject to change without notice due to continuing introduction of design improvements. If there is any conflict between this document and compliance statements, the latter will supersede this document.

SAF Tehnika, JSC has no liability for typing errors in this document or damages of any kind that result from the use of this document.

To get up to date information about accessories and their availability, please contact sales representative.

Copyright Notice
Copyright © 2017 SAF Tehnika, JSC. All rights reserved.

Industry Canada Regulatory Statement

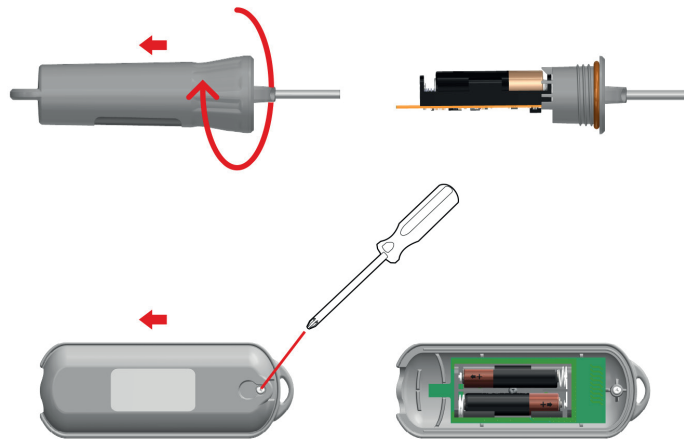
This device complies with Industry Canada's licence-exempt RSSs. Operation is subject to the following two conditions:

- (1) This device may not cause interference; and
- (2) This device must accept any interference, including interference that may cause undesired operation of the device.

Le présent appareil est conforme aux CNR d'Industrie Canada applicables aux appareils radio exempts de licence. L'exploitation est autorisée aux deux conditions suivantes:

- (1) l'appareil ne doit pas produire de brouillage, et
- (2) l'utilisateur de l'appareil doit accepter tout brouillage radioélectrique subi, même si le brouillage est susceptible d'en compromettre le fonctionnement.

How to: Pair sensors to Aranet



1. Pair sensors with Aranet PRO

Aranet PRO supports several types of sensors. In order to connect them to the system the same steps apply for all types of sensors.

- (1) You should physically be located within around 20 meters of Aranet PRO.
- (2) In order to open the sensor follow the individual sensor's instructions (see image above). Once it is opened the battery compartment will be exposed.
- (3) Go to Aranet PRO Settings screen.
- (4) Choose "Sensors" menu.
- (5) Click "Add sensor" button.
- (6) Insert sensor's battery/-ies.
- (7) Red LED light will flash on the sensor. Three short flashes followed by a long flash will signal a connection failure, the pause between flashes will be the same. In a successful pairing the long flash will follow immediately after a short flash. Looking at the LED light can save time while pairing sensors, however, Aranet PRO will also display a notification about a successful or unsuccessful pairing.
- (8) Close the sensor following respective sensor instructions.
- (9) Now you can rename the sensor, set thresholds for alarms, add it to favorites. After completing your tasks click save button.

2. Pair sensors with Aranet MINI

- (1) Tap , then choose Sensors menu and tap the Setup button.
- (2) Set up a sensor by following the instructions on the screen. After successfully setting up a sensor, the sensor ID and the name of the sensor will appear on the left side of the screen. Sensors are given name "SENS <number>" automatically. Tap the name of the sensor to give it a new name with length up to 8 symbols. In order to remove a sensor just press the sign next to it.
- (3) Set up other sensors in the same manner.
 - To add more than 6 sensors, press the page button on top.
 - To change the order of the sensors, press and . Then press on the sensors you want to move and then - where you want to move it to.
 - Tap the home button to return to the main menu.