

FIGURE 1
LCD TV (M/N: PHDN42M78US)
COVER REMOVED



FIGURE 2
LCD TV (M/N: PHDN42M78US)
POWER BOARD (COMPONENT SIDE)



FIGURE 3
LCD TV (M/N: PHDN42M78US)
POWER BOARD (SOLDERED SIDE)



FIGURE 4
LCD TV (M/N: PHDN42M78US)
MAIN BOARD (COMPONENT SIDE)



FIGURE 5
LCD TV (M/N: PHDN42M78US)
MAIN BOARD (SOLDERED SIDE)

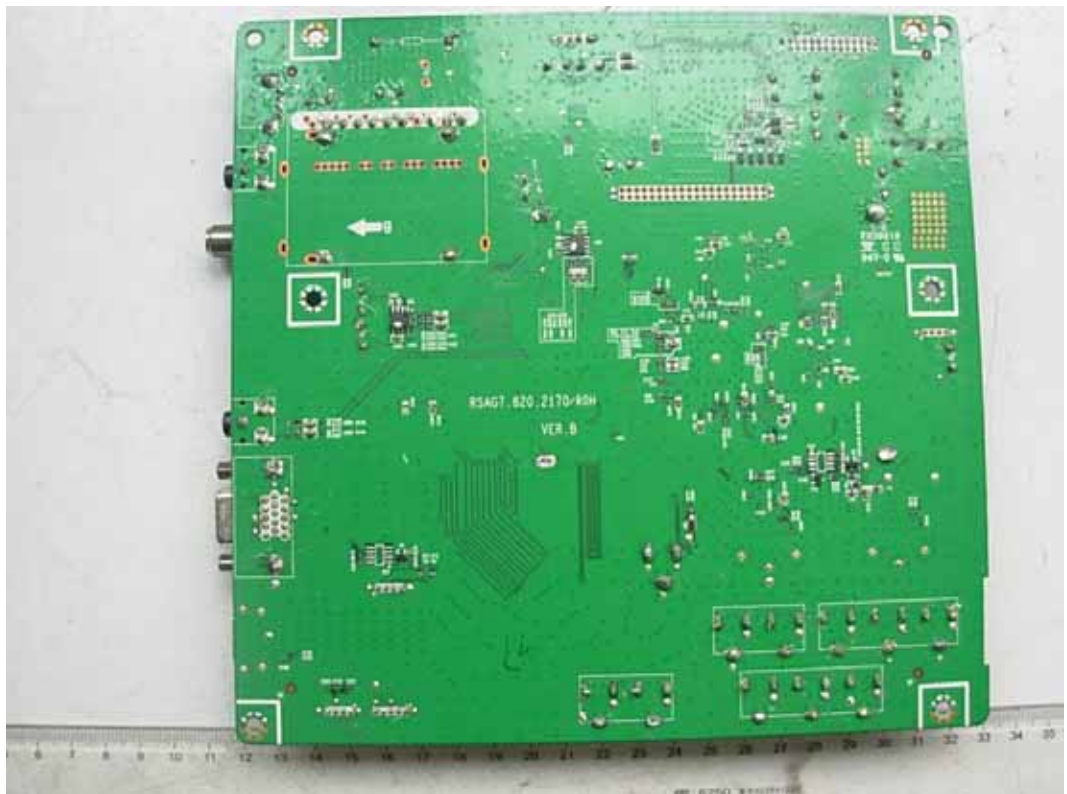


FIGURE 6
LCD TV (M/N: PHDN42M78US)
CHIP & CRYSTAL ON MAIN BOARD



FIGURE 7
LCD TV (M/N: PHDN42M78US)
TUNER



FIGURE 8
LCD TV (M/N: PHDN42M78US)
IR BOARD (COMPONENT SIDE)

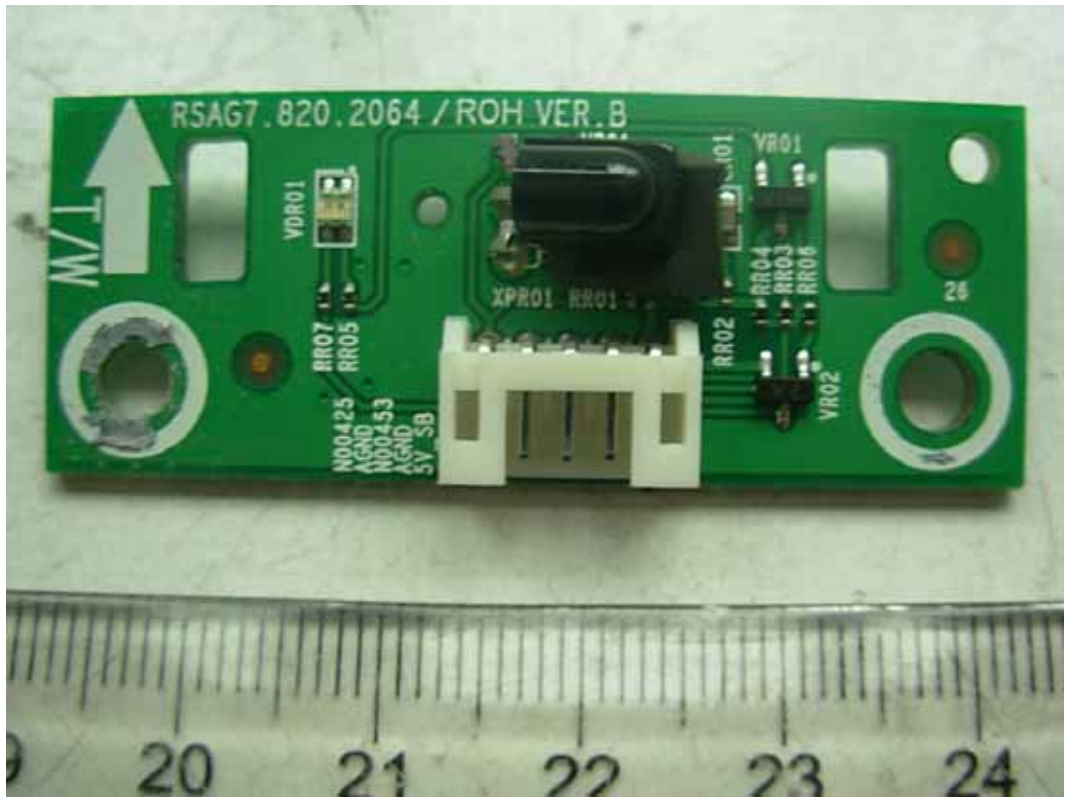


FIGURE 9
LCD TV (M/N: PHDN42M78US)
IR BOARD (SOLDERED SIDE)

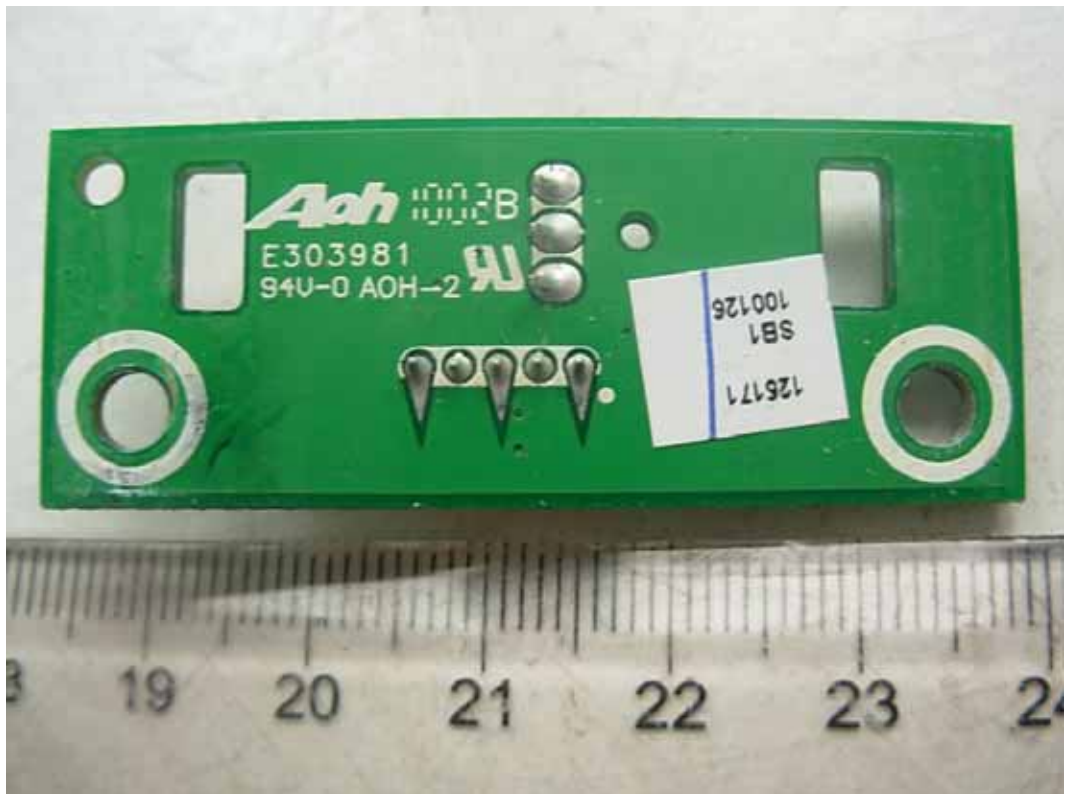


FIGURE 10
LCD TV (M/N: PHDN42M78US)
DISPLAY BOARD (COMPONENT SIDE)

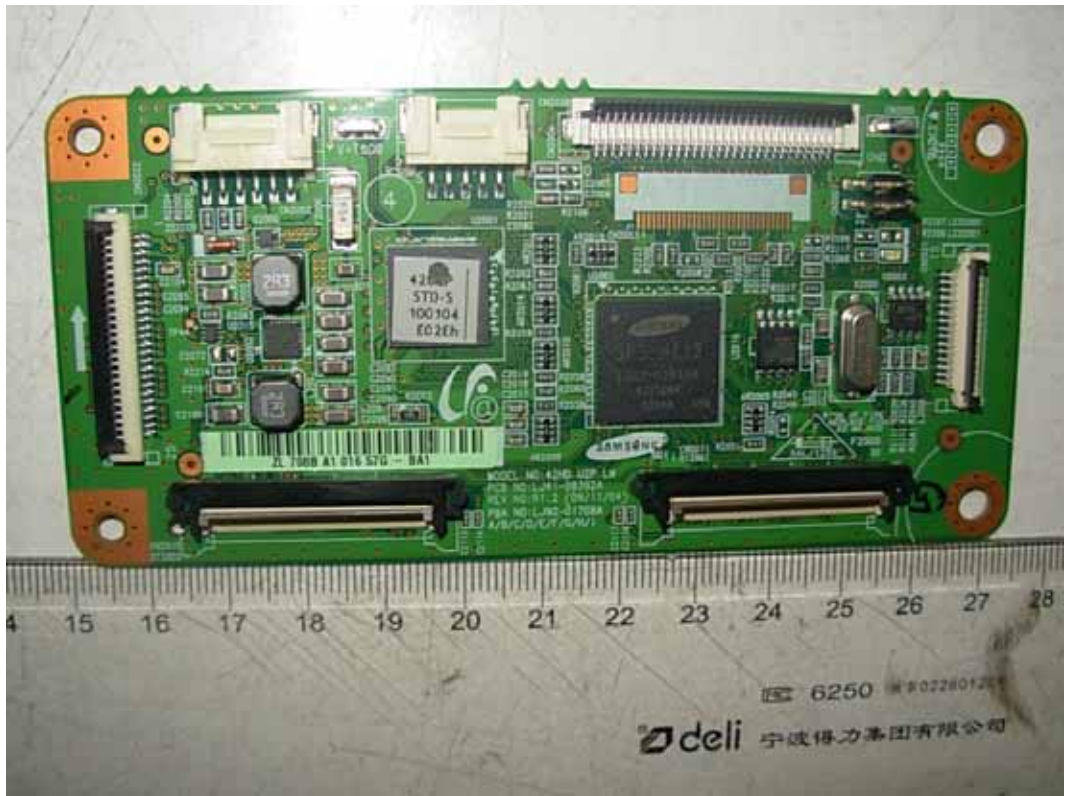


FIGURE 11
LCD TV (M/N: PHDN42M78US)
DISPLAY BOARD (SOLDERED SIDE)

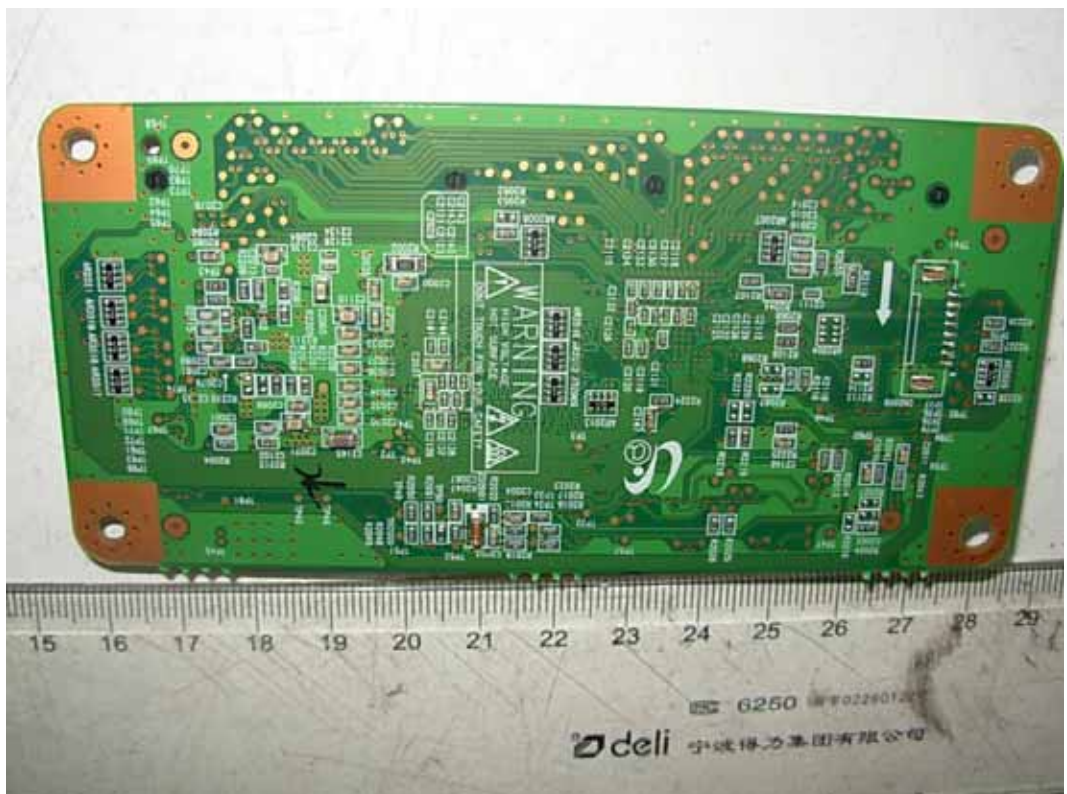


FIGURE 12
LCD TV (M/N: PHDN42M78US)
CHIP & CRYSTAL ON DISPLAY BOARD



FIGURE 13
LCD TV (M/N: PHDN42M78US)
VSCAN BOARD (COMPONENT SIDE)



FIGURE 14
LCD TV (M/N: PHDN42M78US)
VSCAN BOARD (SOLDERED SIDE)

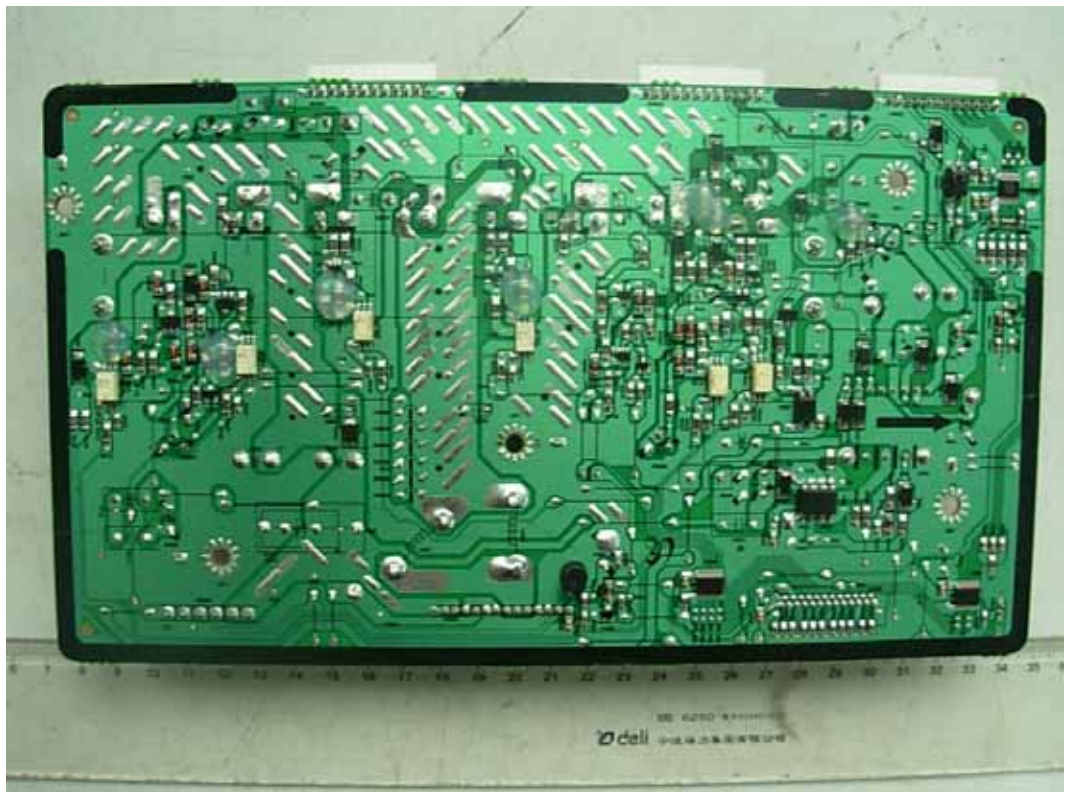


FIGURE 15
LCD TV (M/N: PHDN42M78US)
RTPower BOARD (COMPONENT SIDE)

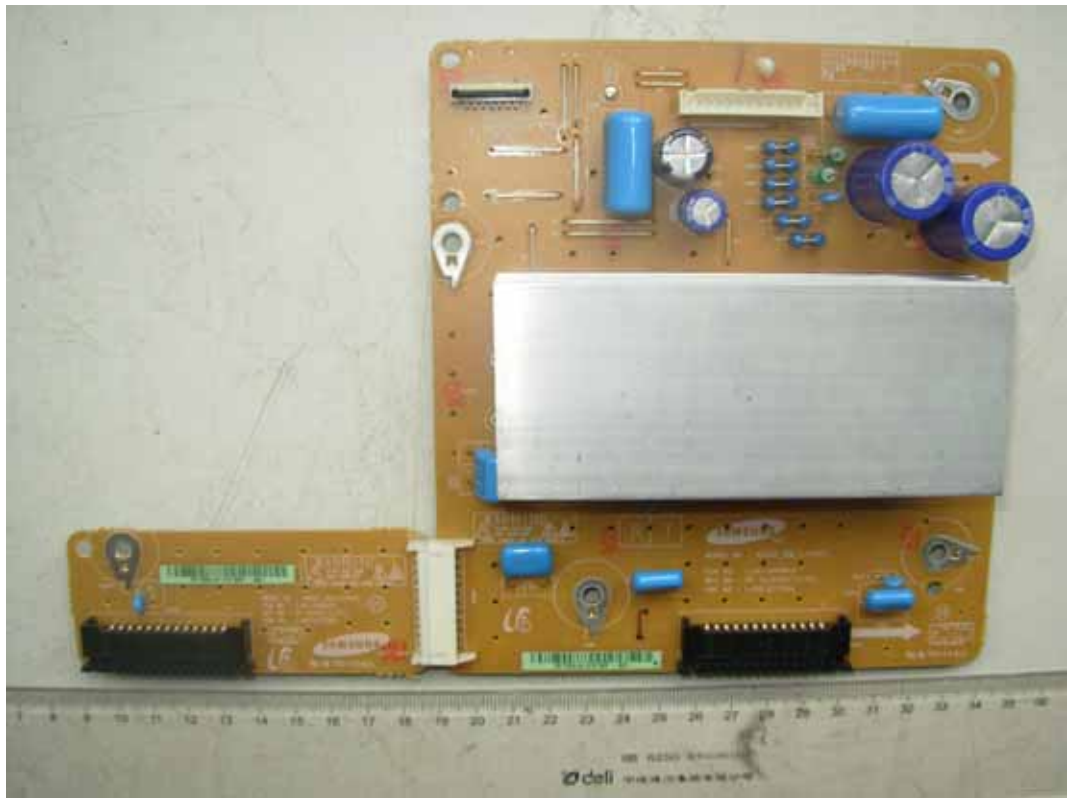


FIGURE 16
LCD TV (M/N: PHDN42M78US)
RTPower BOARD (SOLDERED SIDE)

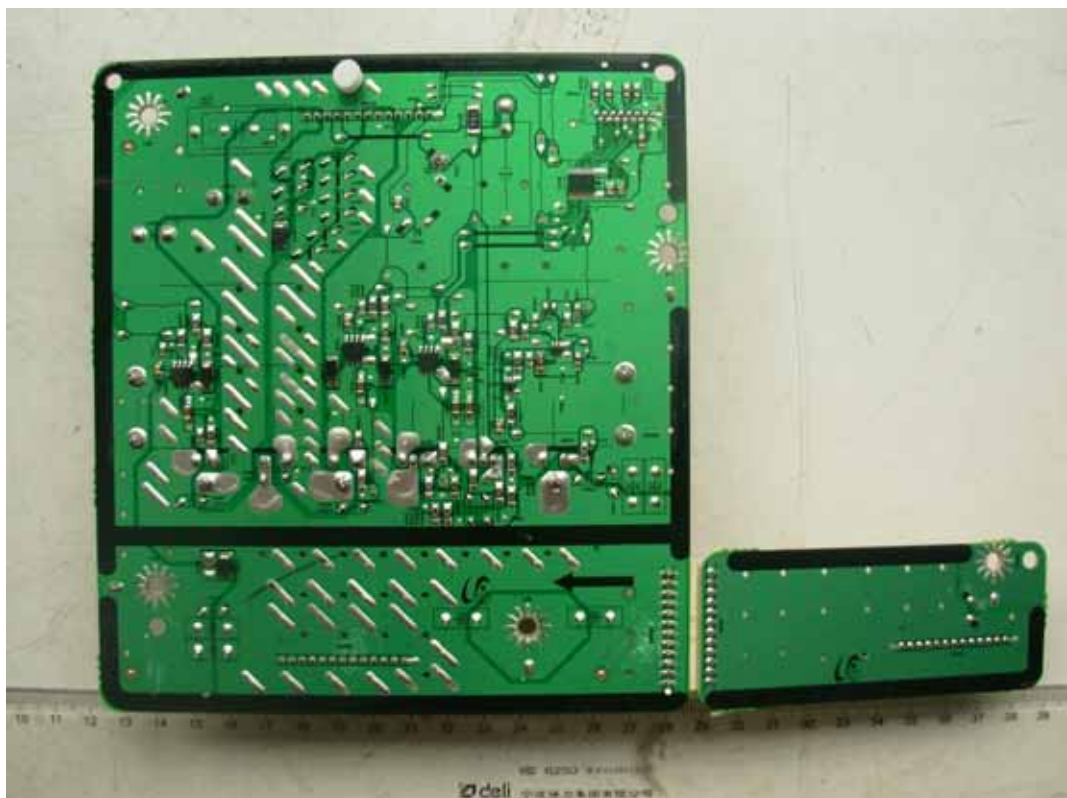


FIGURE 17
LCD TV (M/N: PHDN42M78US)
RTCONTROL BOARD (COMPONENT SIDE)

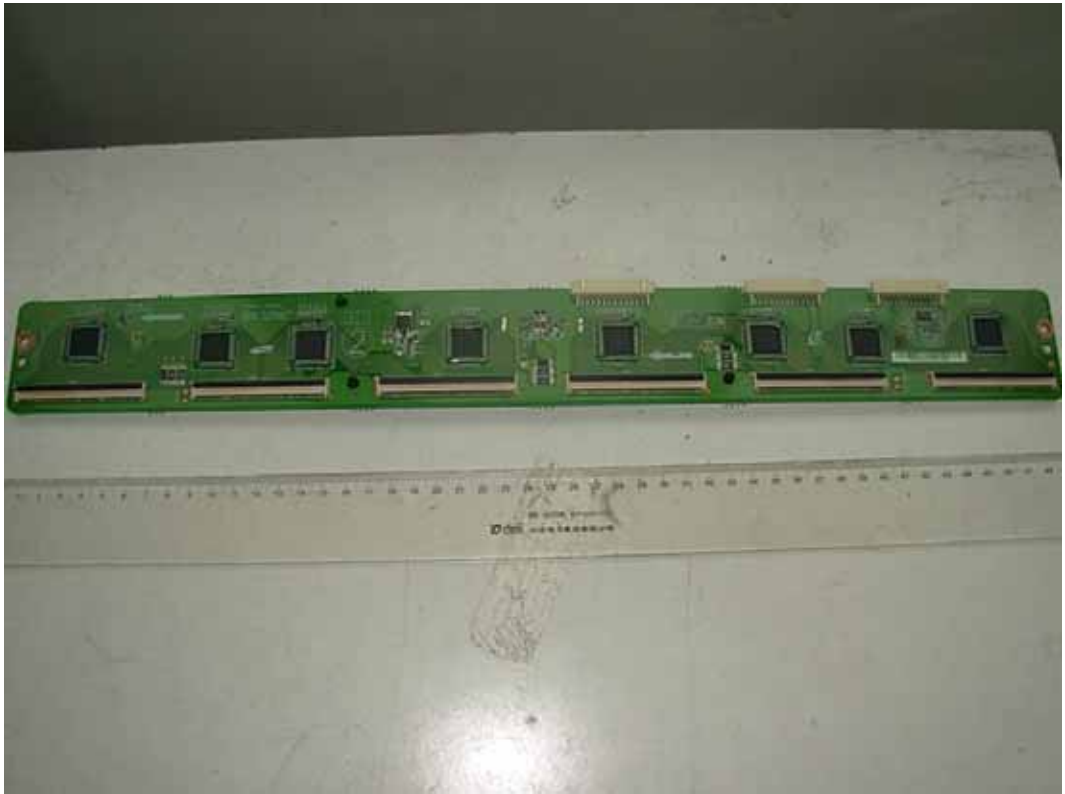


FIGURE 18
LCD TV (M/N: PHDN42M78US)
RTCONTROL BOARD (SOLDERED SIDE)



FIGURE 19
LCD TV (M/N: PHDN42M78US)
KEY BOARD (COMPONENT SIDE)



FIGURE 20
LCD TV (M/N: PHDN42M78US)
KEY BOARD (SOLDERED SIDE)

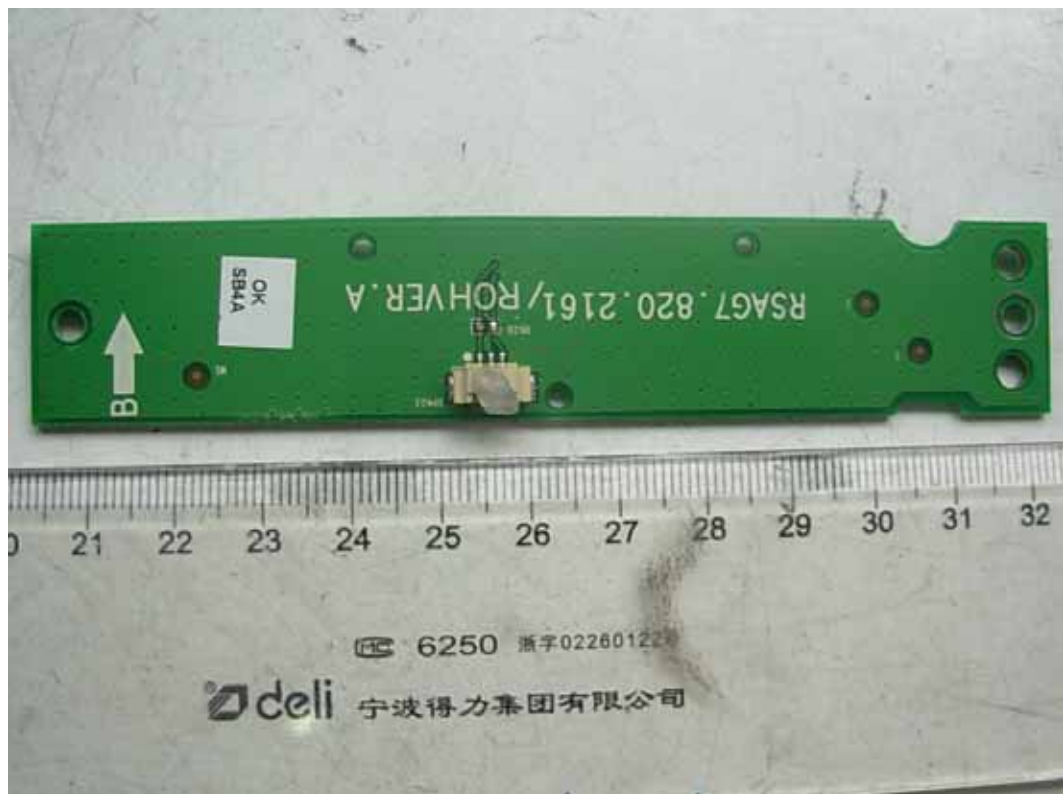


FIGURE 21
 LCD TV (M/N: PHDN42M78US)
 LABEL ON PANEL



FIGURE 22
 LCD TV (M/N: PHDN42M78US)
 DEBUG #1



FIGURE 23
LCD TV (M/N: PHDN42M78US)
DEBUG #2



FIGURE 24
LCD TV (M/N: PHDN42M78US)
DEBUG #3



FIGURE 25
LCD TV (M/N: PHDN42M78US)
DEBUG #4

