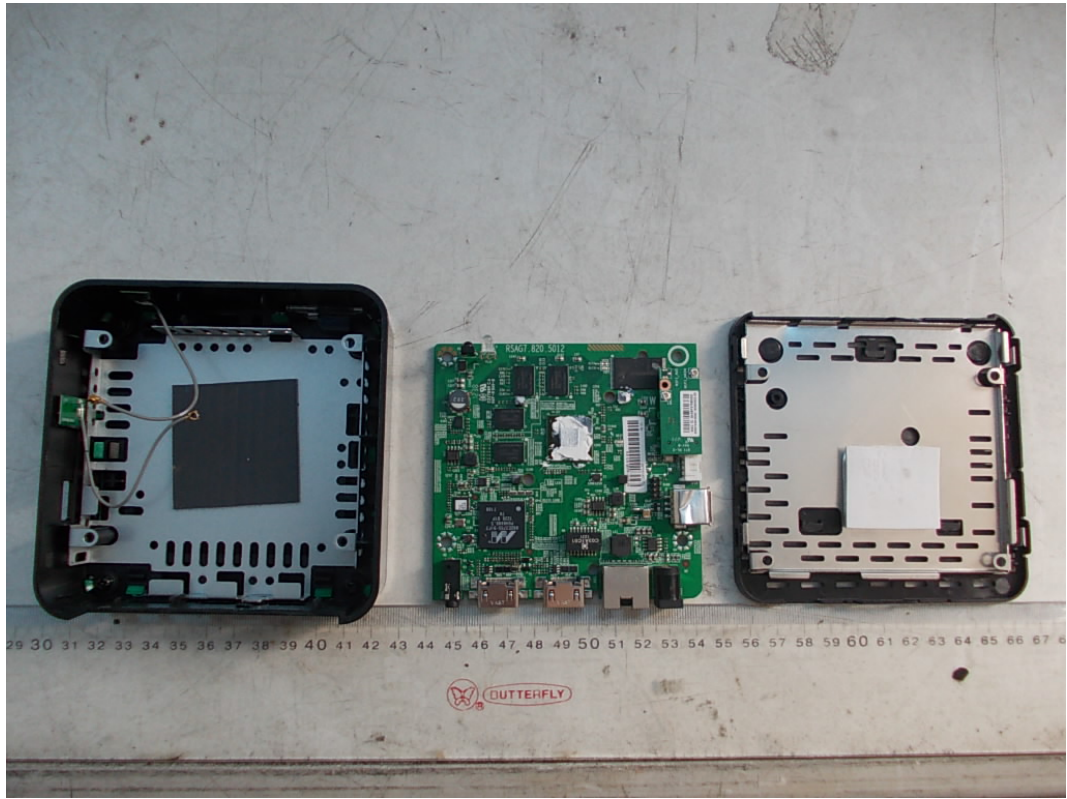
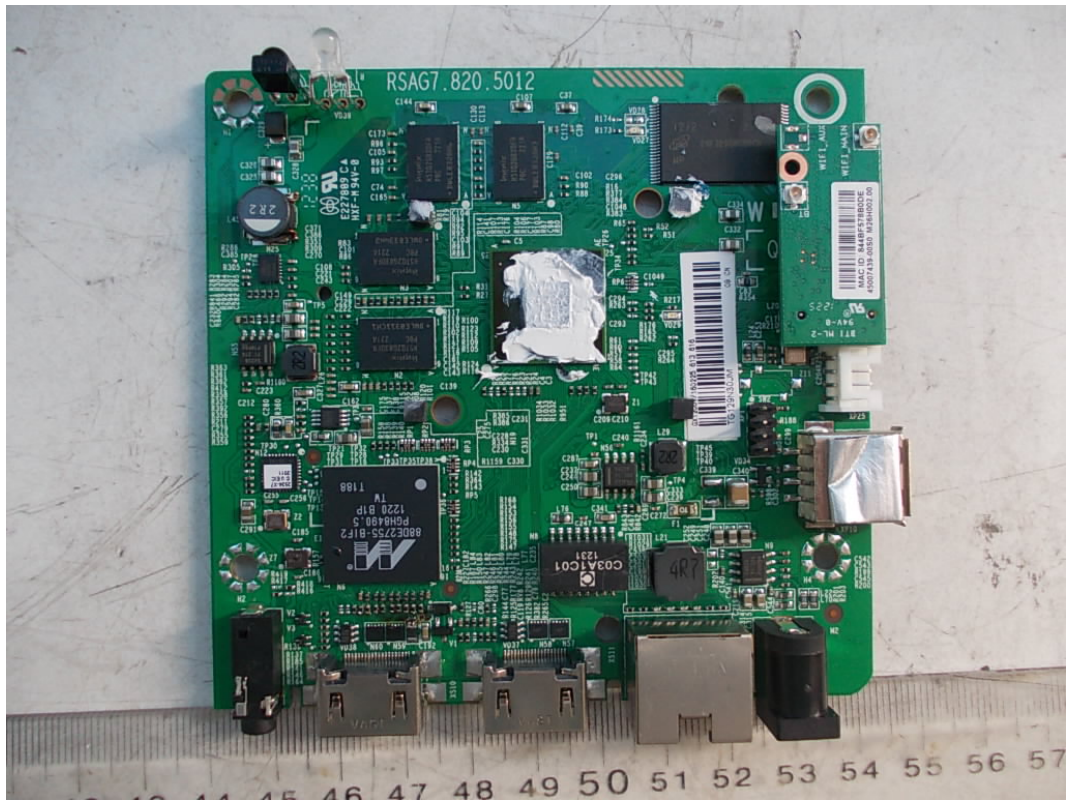


FIGURE 1
NETWORK MEDIA PLAYER (M/N: GX1200V)
COVER REMOVED



*FIGURE 2
NETWORK MEDIA PLAYER (M/N: GX1200V)
MAIN BOARD (COMPONENT SIDE)*



*FIGURE 3
NETWORK MEDIA PLAYER (M/N: GX1200V)
MAIN BOARD (SOLDERED SIDE)*

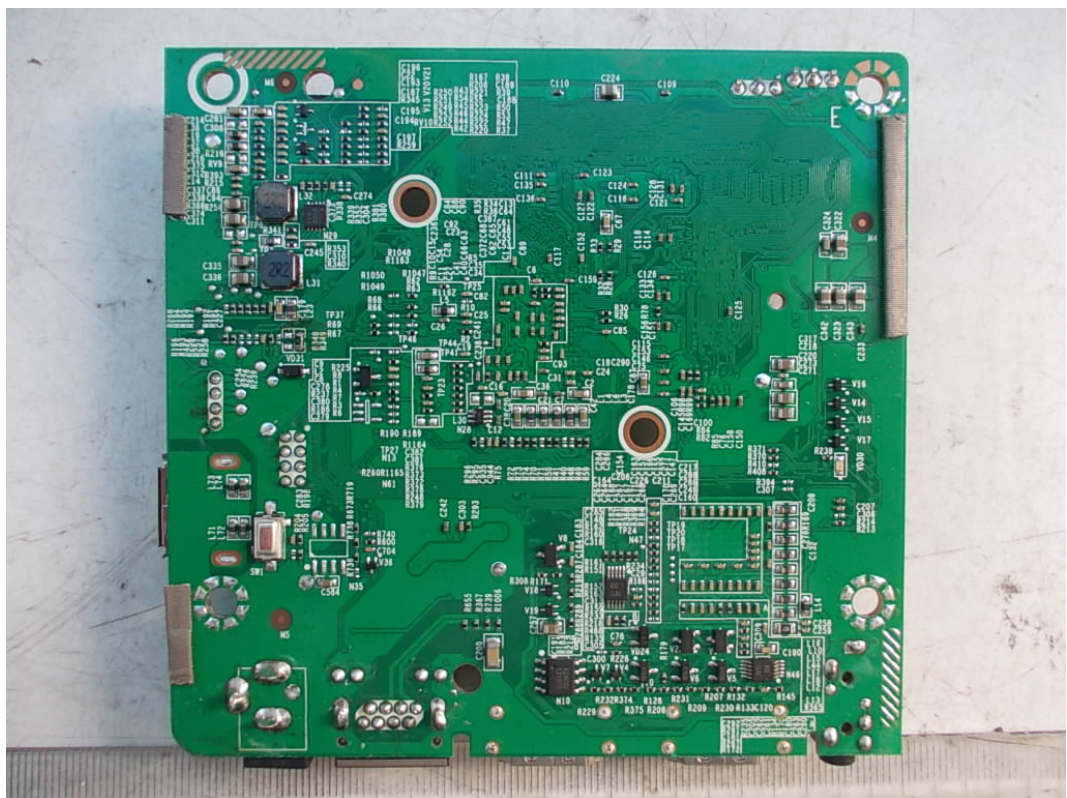


FIGURE 4
NETWORK MEDIA PLAYER (M/N: GX1200V)
CHIP & CRYSTAL #1 ON MAIN BOARD

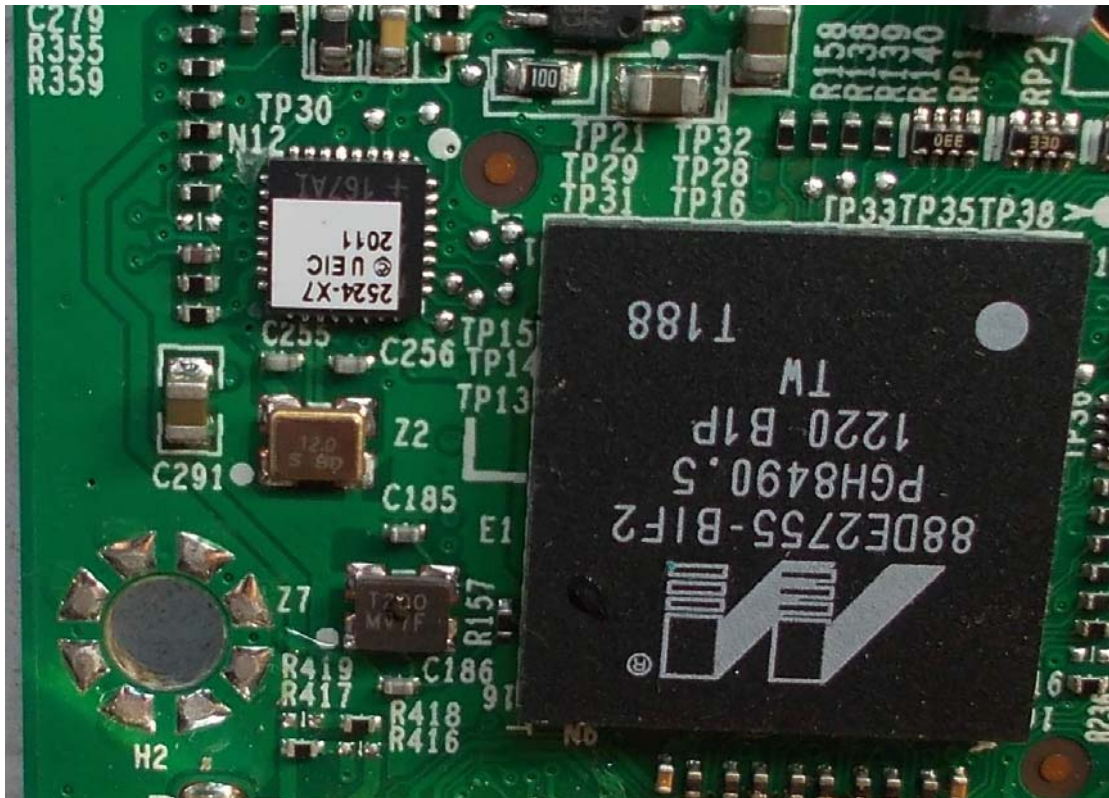


FIGURE 5
NETWORK MEDIA PLAYER (M/N: GX1200V)
CRYSTAL #2 ON MAIN BOARD



FIGURE 6
NETWORK MEDIA PLAYER (M/N: GX1200V)
ANTENNA POSITION

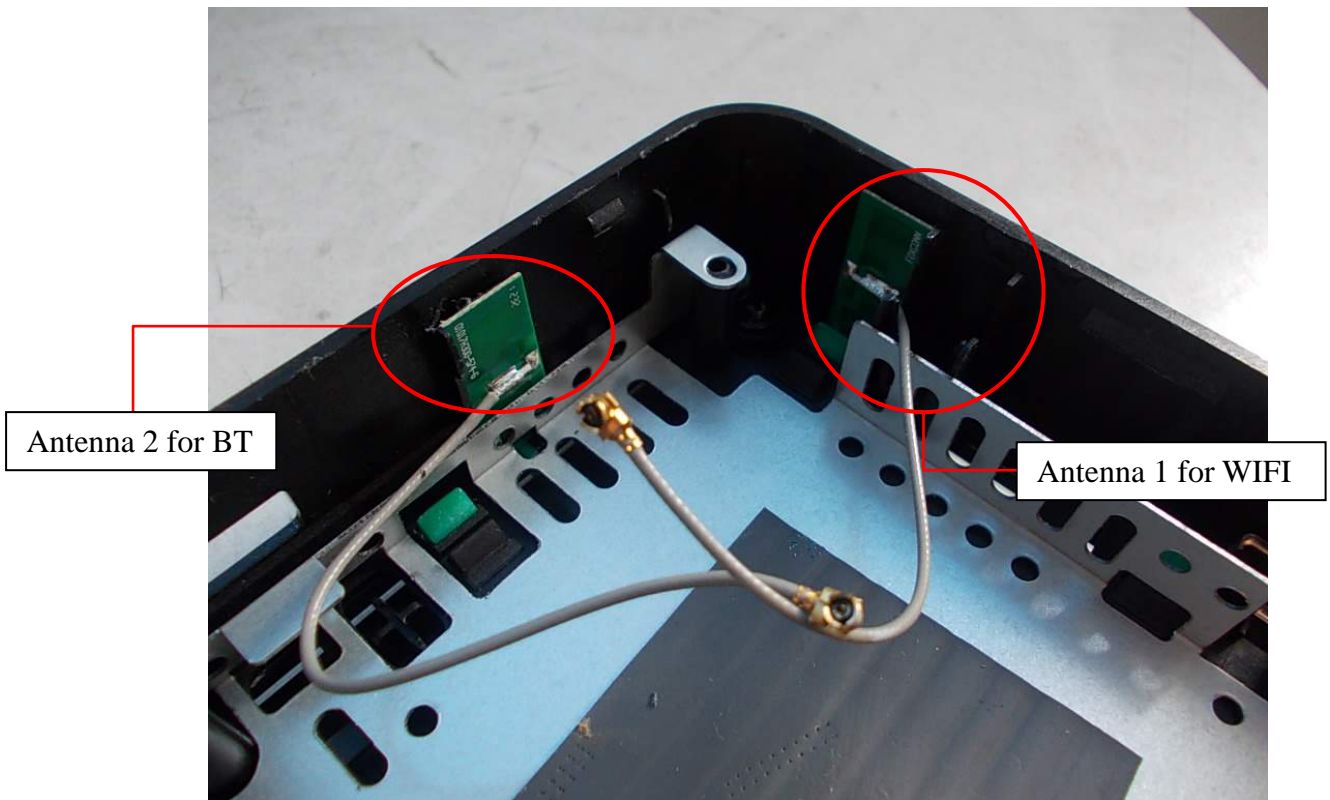


FIGURE 7
NETWORK MEDIA PLAYER (M/N: GX1200V)
ANTENNA (FRONT VIEW)

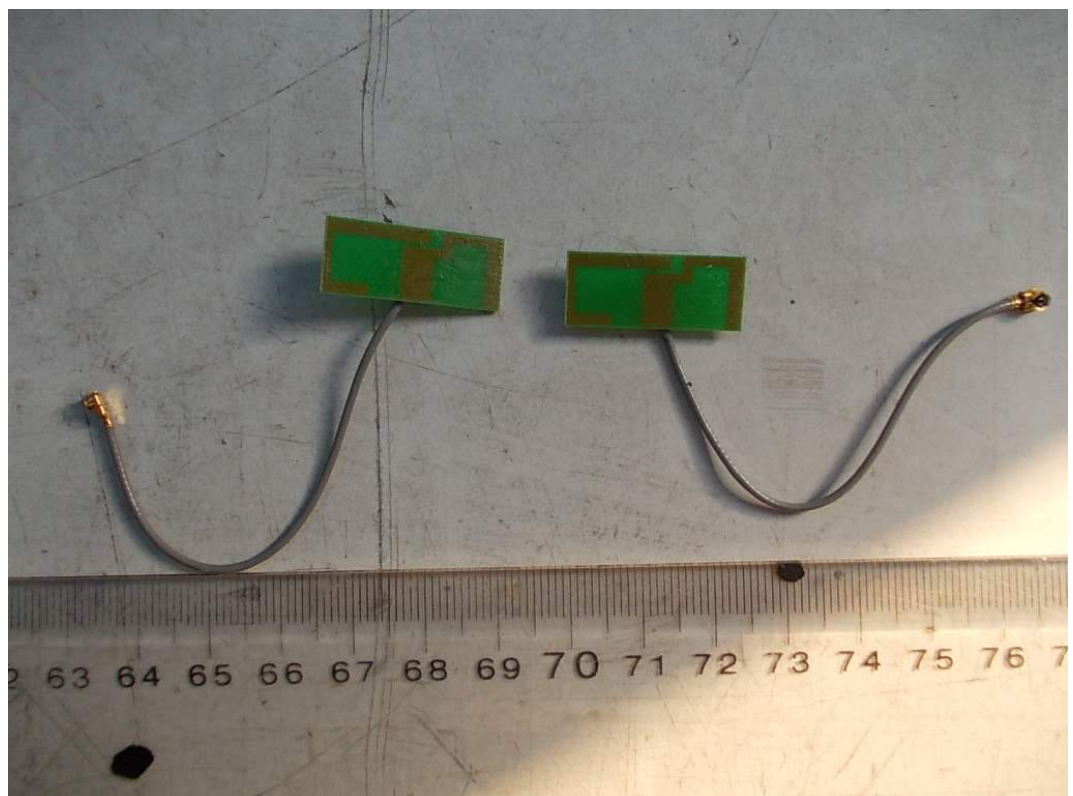


FIGURE 8
NETWORK MEDIA PLAYER (M/N: GX1200V)
ANTENNA (BACK VIEW)

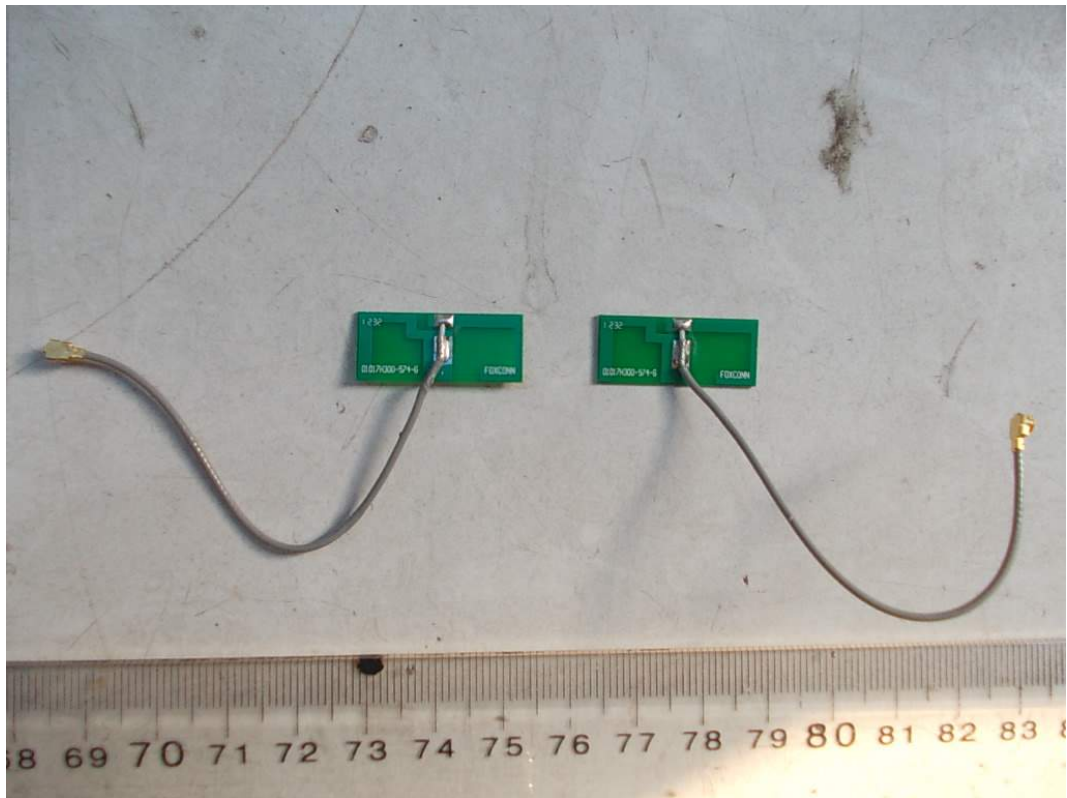


FIGURE 9
NETWORK MEDIA PLAYER (M/N: GX1200V)
RF BOARD (FRONT VIEW)

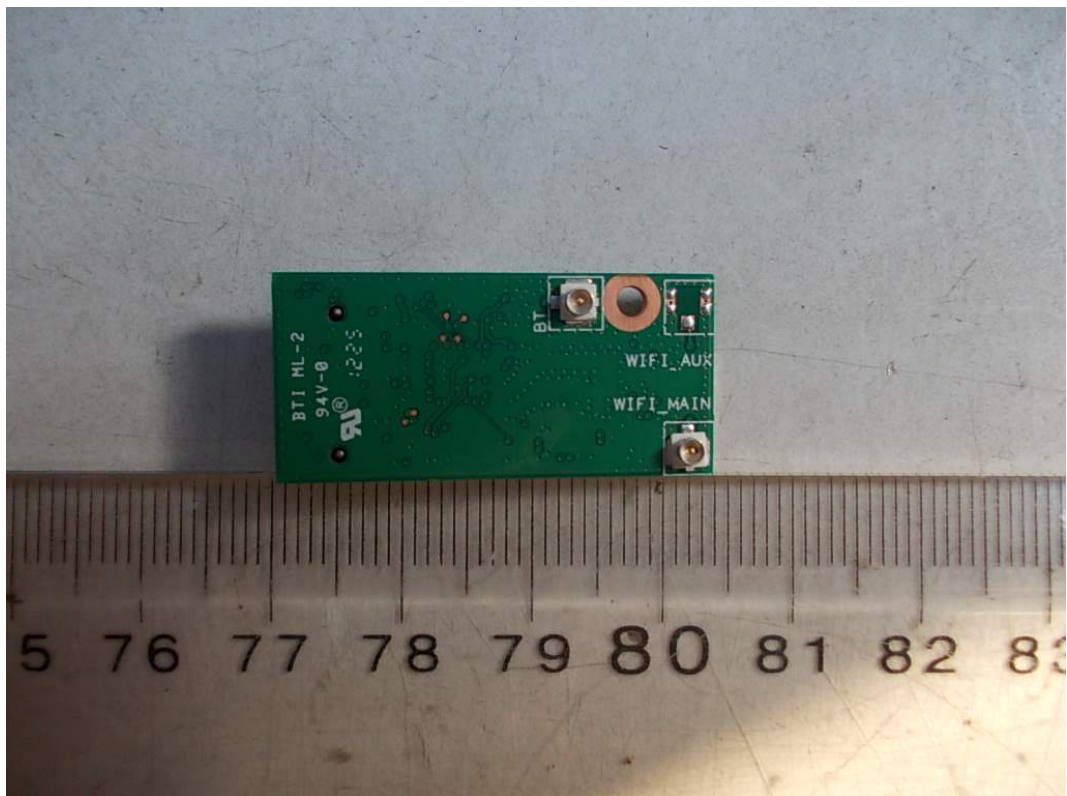


FIGURE 10
NETWORK MEDIA PLAYER (M/N: GX1200V)
RF BOARD (BACK VIEW)

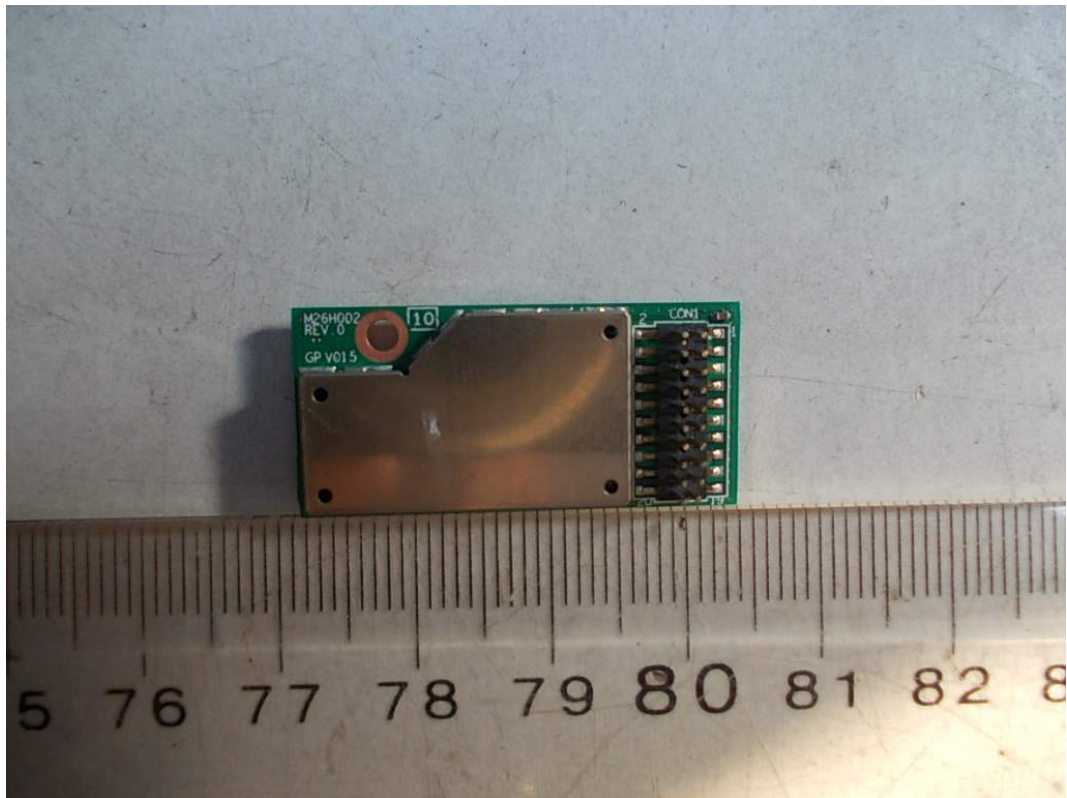


FIGURE 11
NETWORK MEDIA PLAYER (M/N: GX1200V)
RF BOARD (SHIELDED COVER REMOVED)

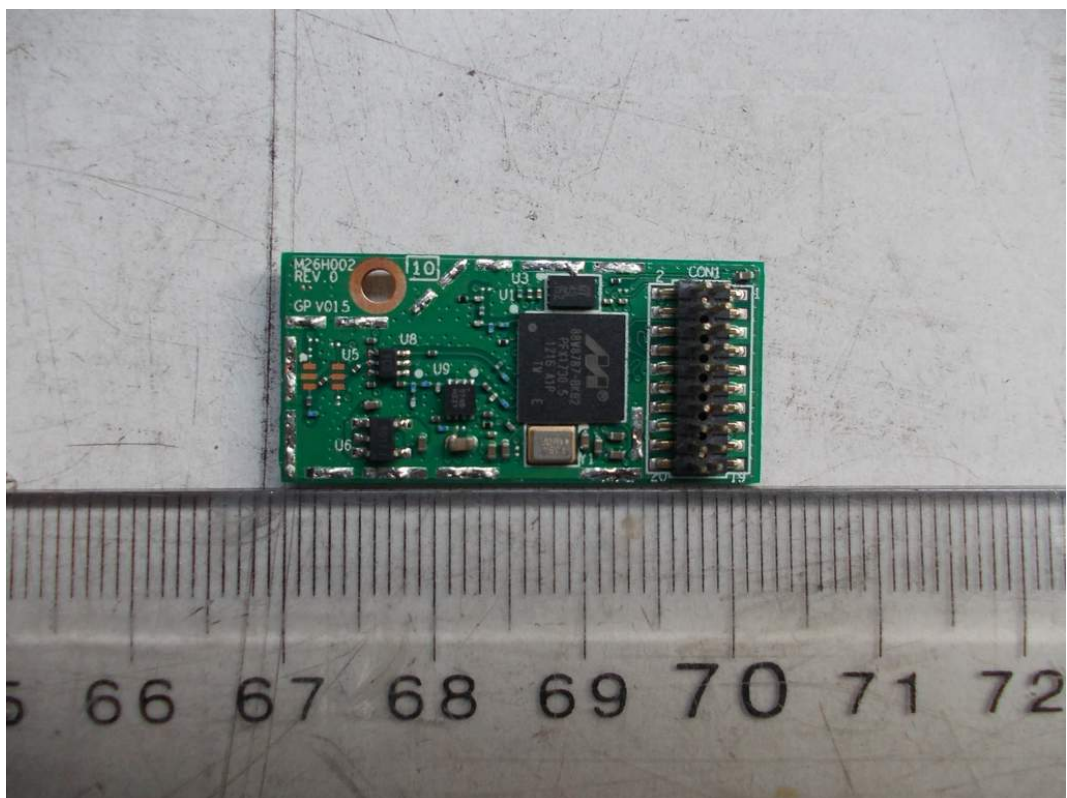


FIGURE 12
NETWORK MEDIA PLAYER (M/N: GX1200V)
CHIP & CRYSTAL ON RF BOARD

