

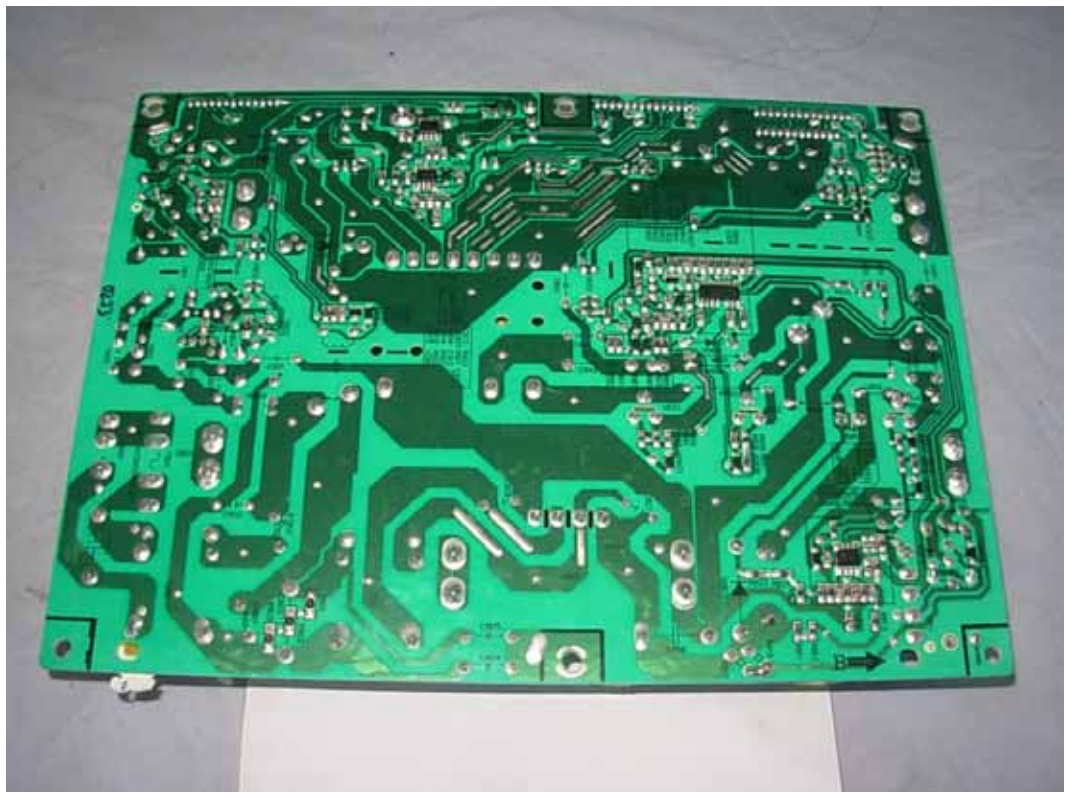
*FIGURE 1*  
*LCD TV (M/N: ELCHW402)*  
*COVER REMOVED*



*FIGURE 2*  
*LCD TV (M/N: ELCHW402)*  
*POWER BOARD (COMPONENT SIDE)*



*FIGURE 3*  
*LCD TV (M/N: ELCHW402)*  
*POWER BOARD (SOLDERED SIDE)*



*FIGURE 4*  
*LCD TV (M/N: ELCHW402)*  
*MAIN BOARD (COMPONENT SIDE)*



*FIGURE 5*  
*LCD TV (M/N: ELCHW402)*  
*MAIN BOARD (SOLDERED SIDE)*

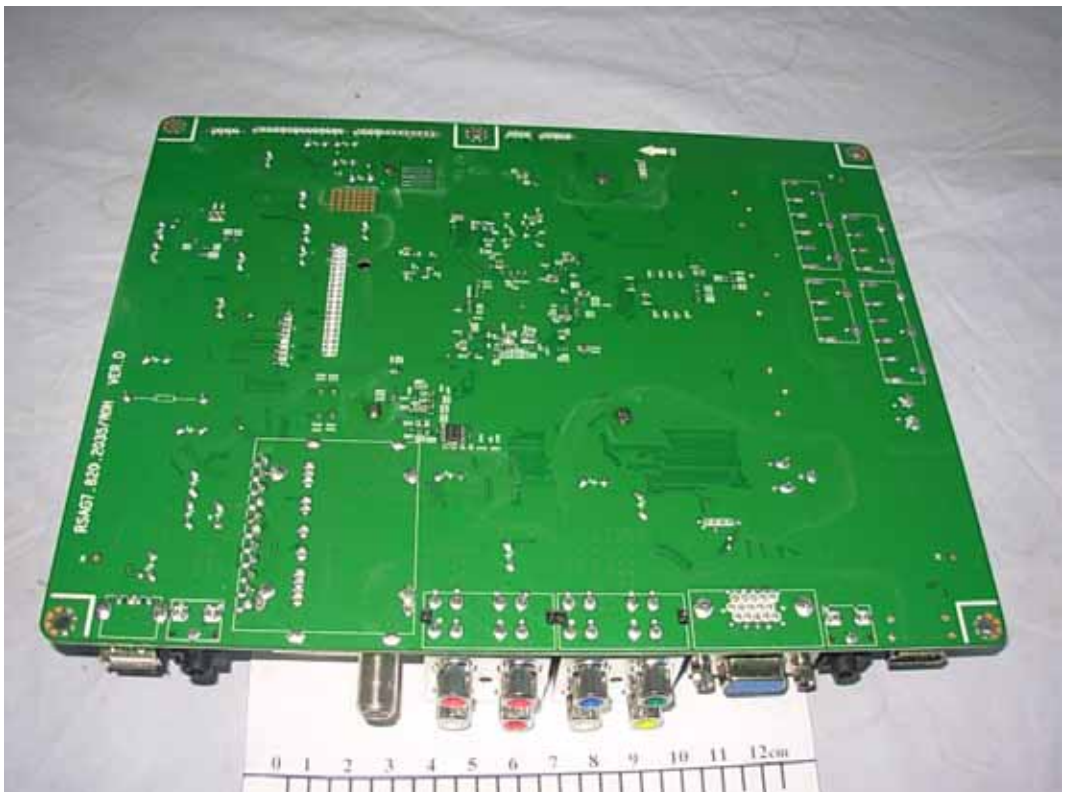




FIGURE 6  
LCD TV (M/N: ELCHW402)  
CRYSTAL #1 & CHIP #1 ON MAIN BOARD



FIGURE 7  
LCD TV (M/N: ELCHW402)  
CHIP #2 ON MAIN BOARD



FIGURE 8  
LCD TV (M/N: ELCHW402)  
TUNER



FIGURE 9  
LCD TV (M/N: ELCHW402)  
IR BOARD (COMPONENT SIDE)

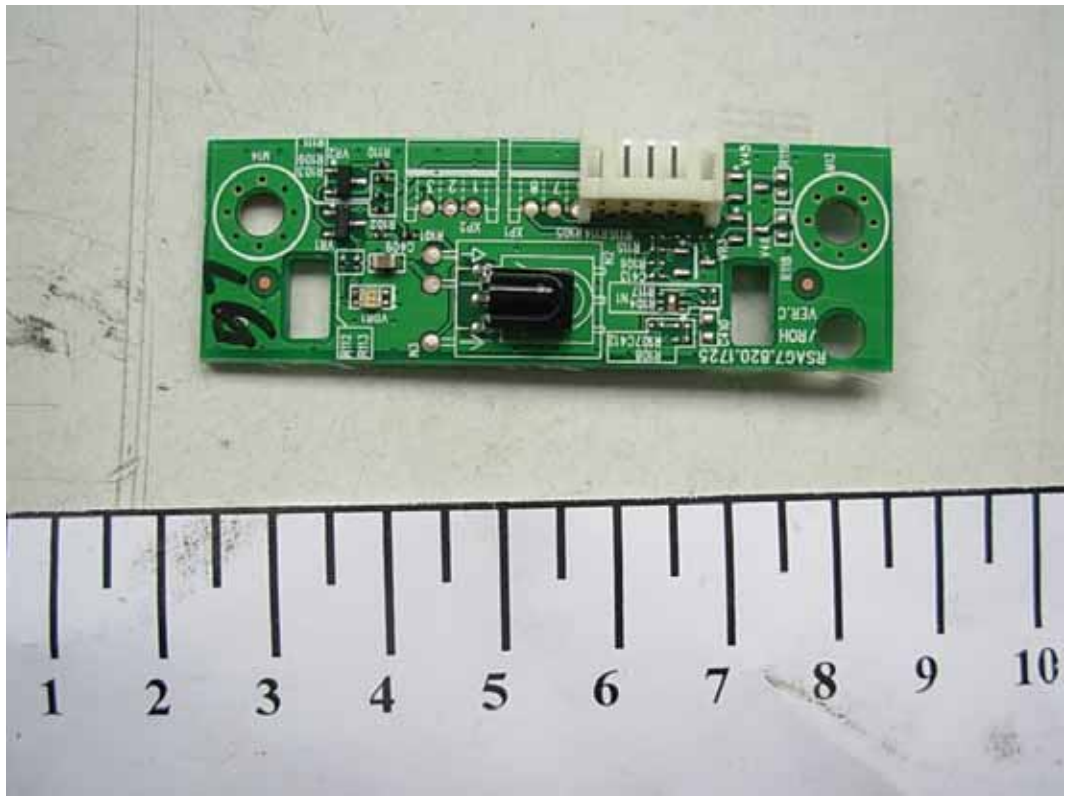
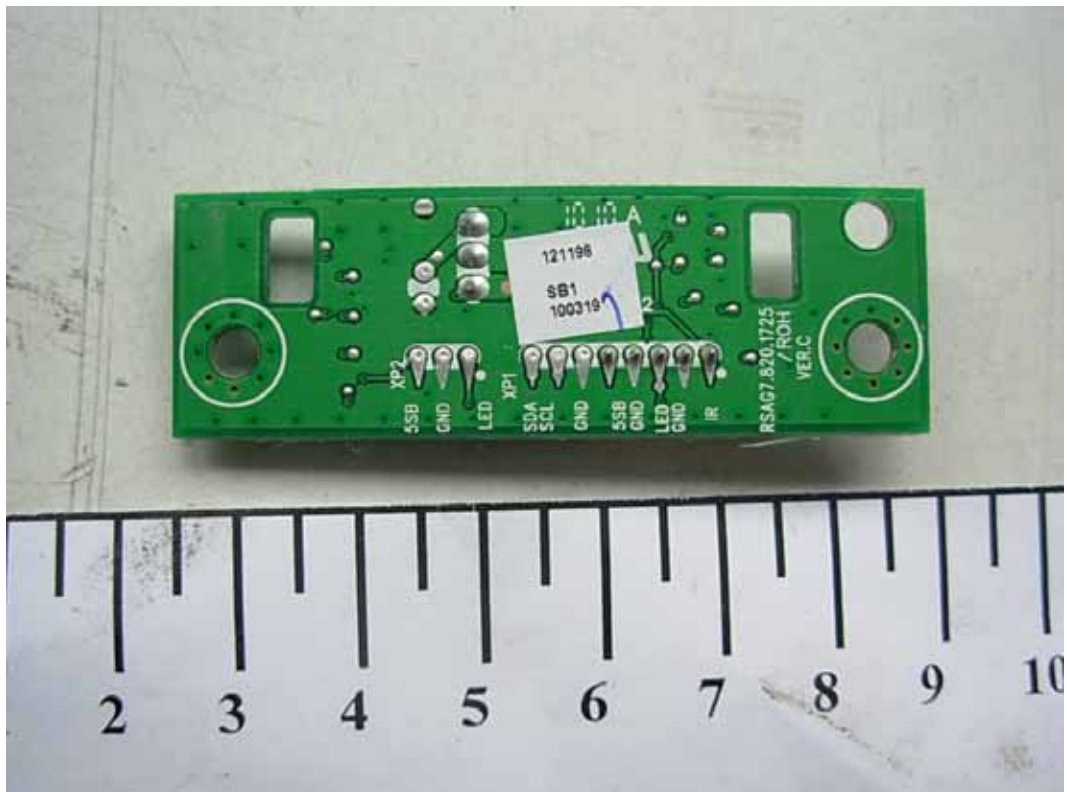
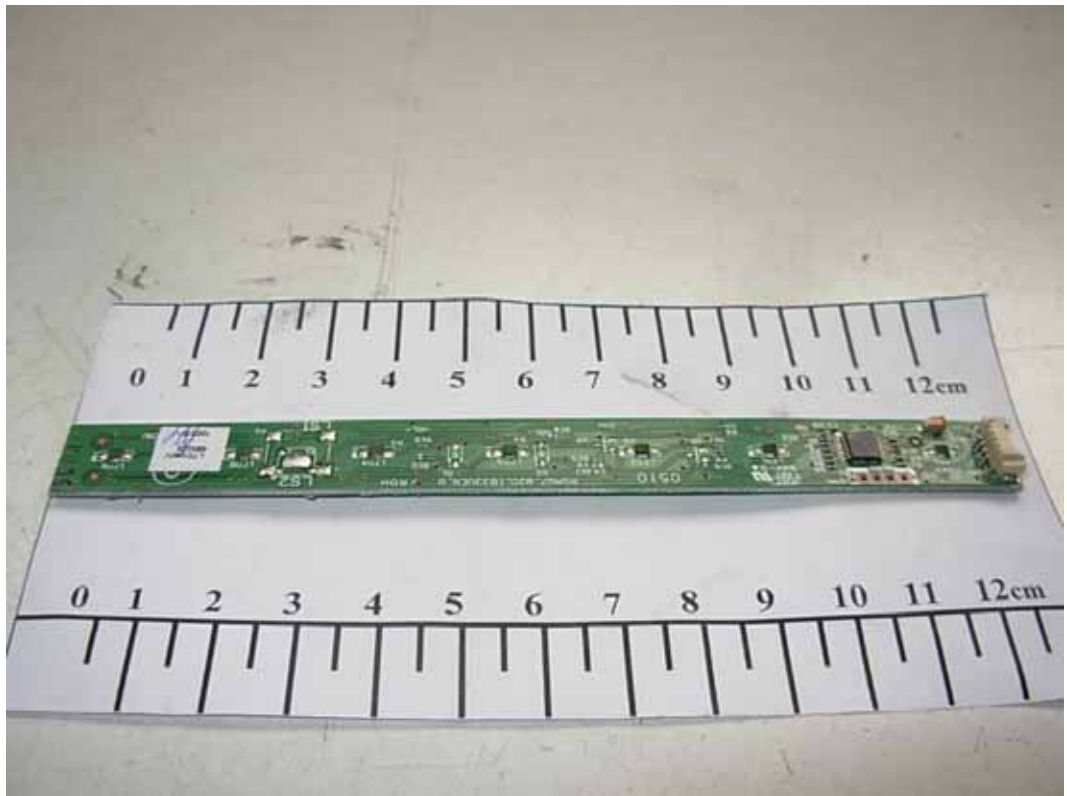


FIGURE 10  
LCD TV (M/N: ELCHW402)  
IR BOARD (SOLDERED SIDE)





*FIGURE 11*  
*LCD TV (M/N: ELCHW402)*  
*KEY BOARD (COMPONENT SIDE)*



*FIGURE 12*  
*LCD TV (M/N: ELCHW402)*  
*KEY BOARD (SOLDERED SIDE)*

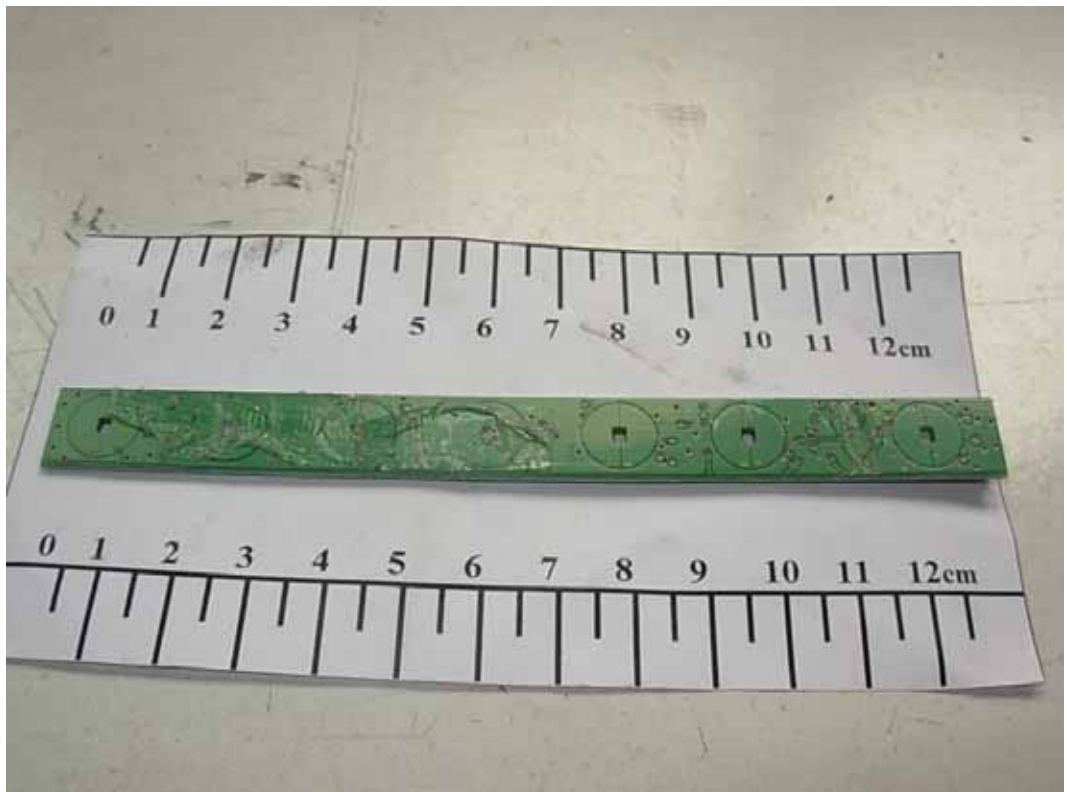


FIGURE 13  
LCD TV (M/N: ELCHW402)  
LCD PANEL MAIN BOARD (COMPONENT SIDE)

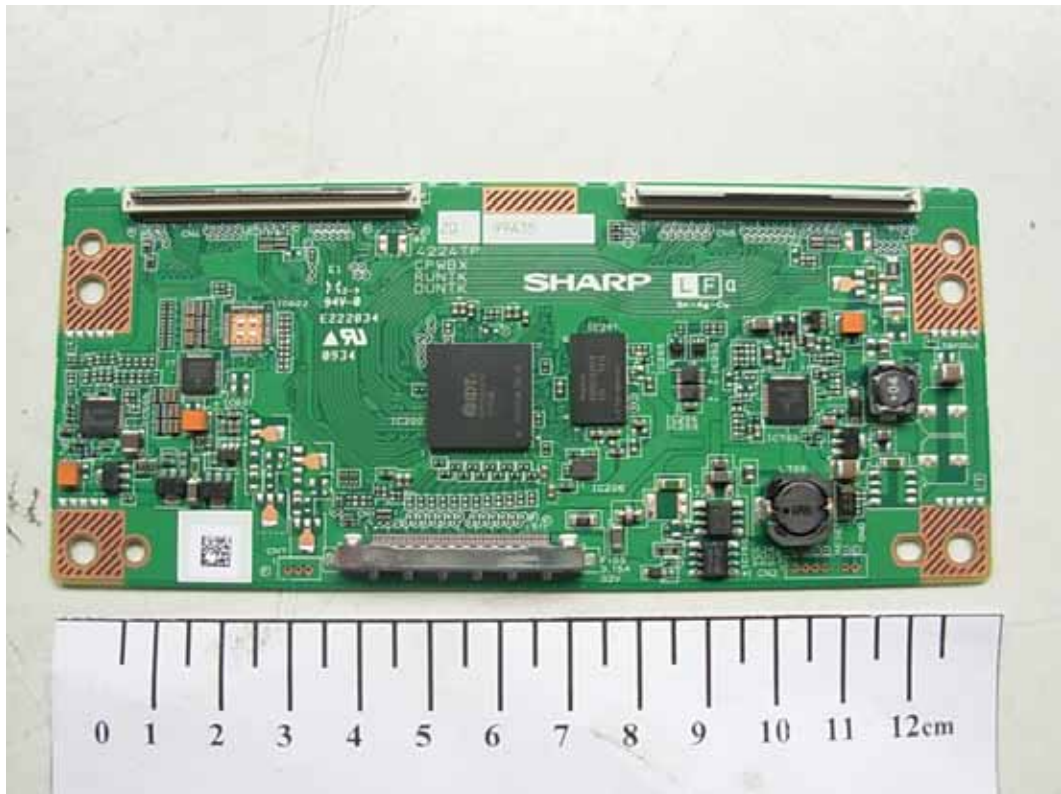


FIGURE 14  
LCD TV (M/N: ELCHW402)  
LCD PANEL MAIN BOARD (SOLDERED SIDE)

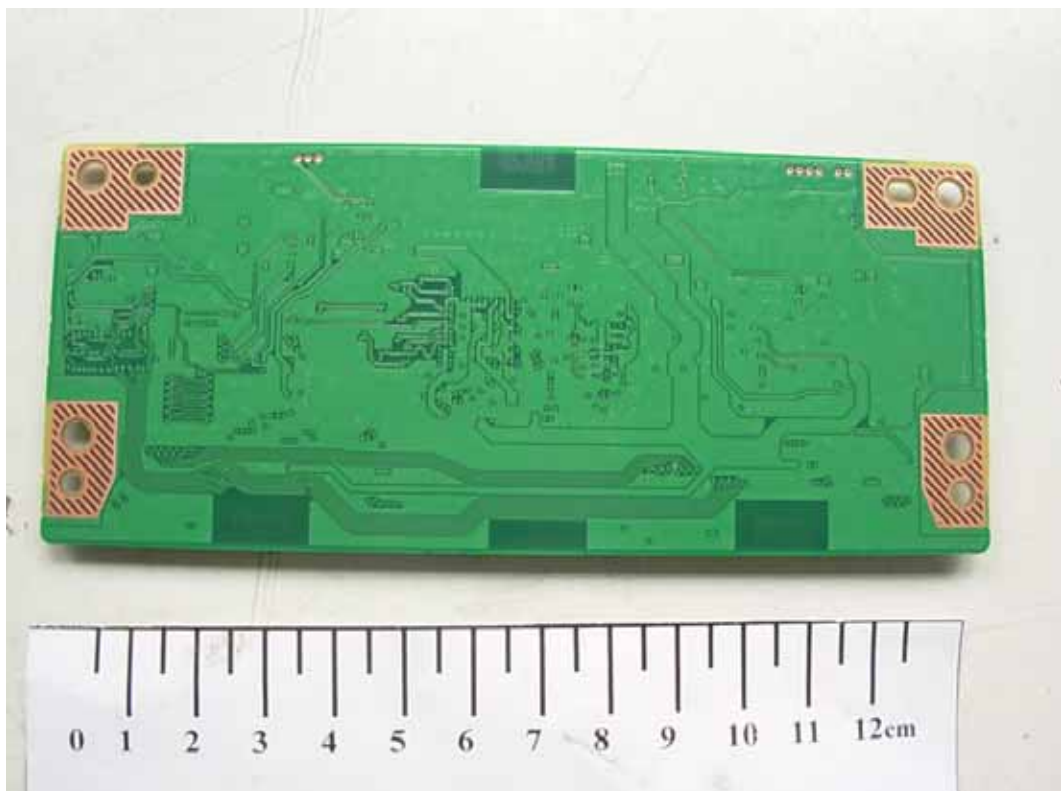




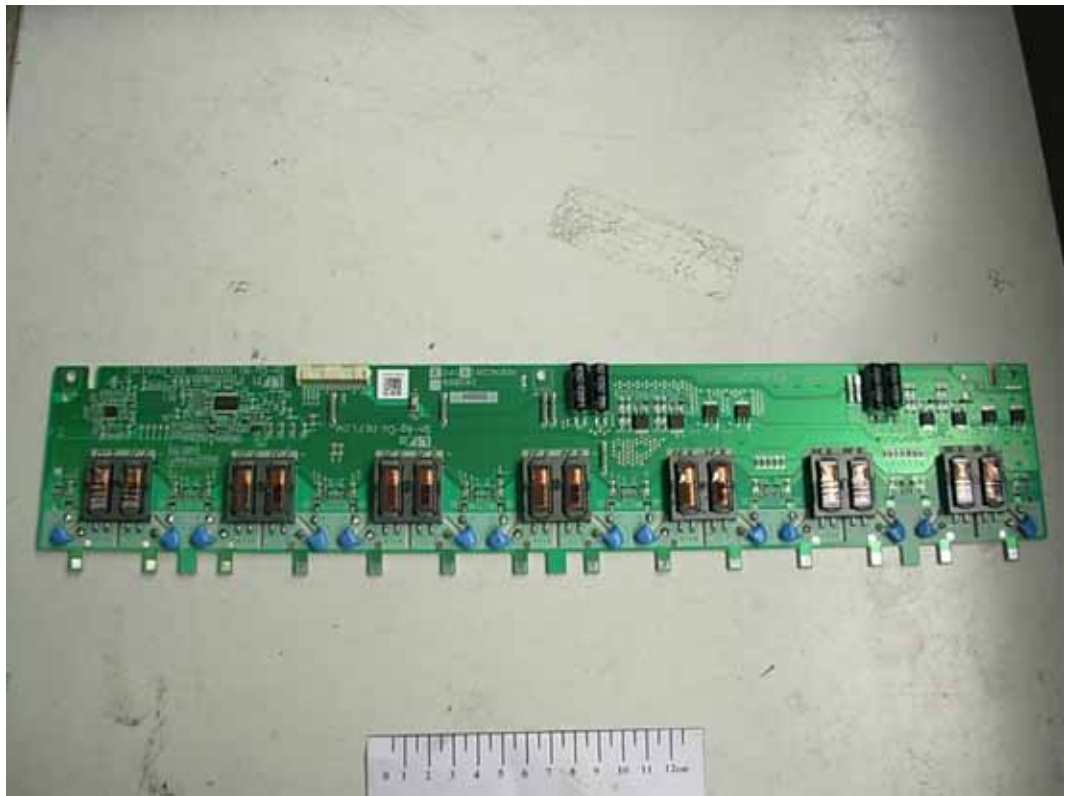
FIGURE 15  
LCD TV (M/N: ELCHW402)  
CHIP ON LCD PANEL MAIN BOARD



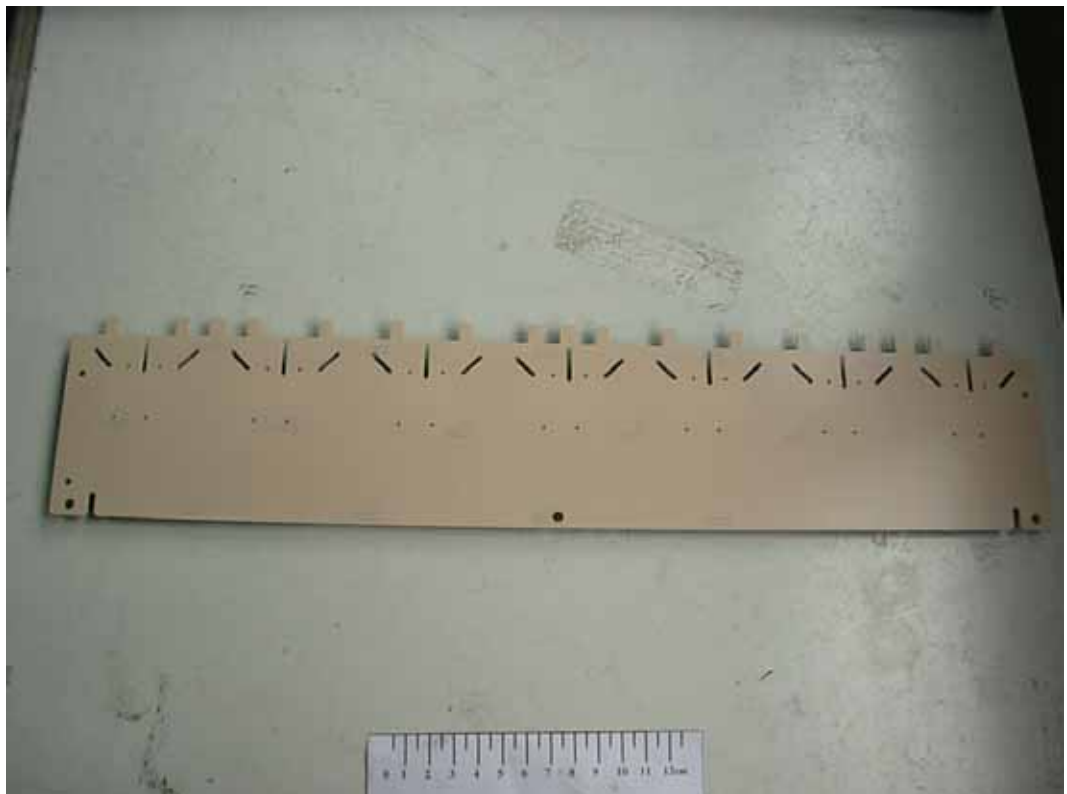
FIGURE 16  
LCD TV (M/N: ELCHW402)  
LABEL ON LCD PANEL



*FIGURE 17*  
*LCD TV (M/N: ELCHW402)*  
*HIGH VOLTAGE SIGNAL BOARD #1 (COMPONENT SIDE)*



*FIGURE 18*  
*LCD TV (M/N: ELCHW402)*  
*HIGH VOLTAGE SIGNAL BOARD #1 (SOLDERED SIDE)*



*FIGURE 19*  
*LCD TV (M/N: ELCHW402)*  
*HIGH VOLTAGE SIGNAL BOARD #2 (COMPONENT SIDE)*



*FIGURE 20*  
*LCD TV (M/N: ELCHW402)*  
*HIGH VOLTAGE SIGNAL BOARD #2 (SOLDERED SIDE)*

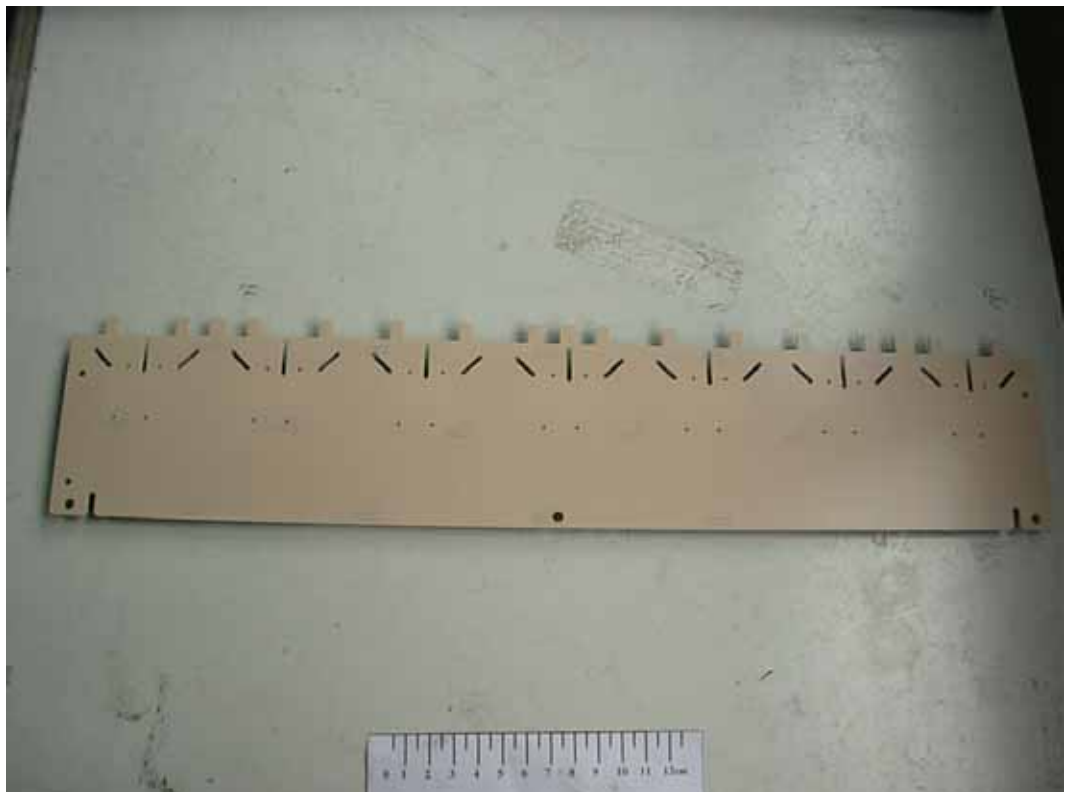




FIGURE 21  
LCD TV (M/N: ELCHW402)  
DEBUG #1



FIGURE 22  
LCD TV (M/N: ELCHW402)  
DEBUG #2



*FIGURE 23*  
*LCD TV (M/N: ELCHW402)*  
*DEBUG #3*

