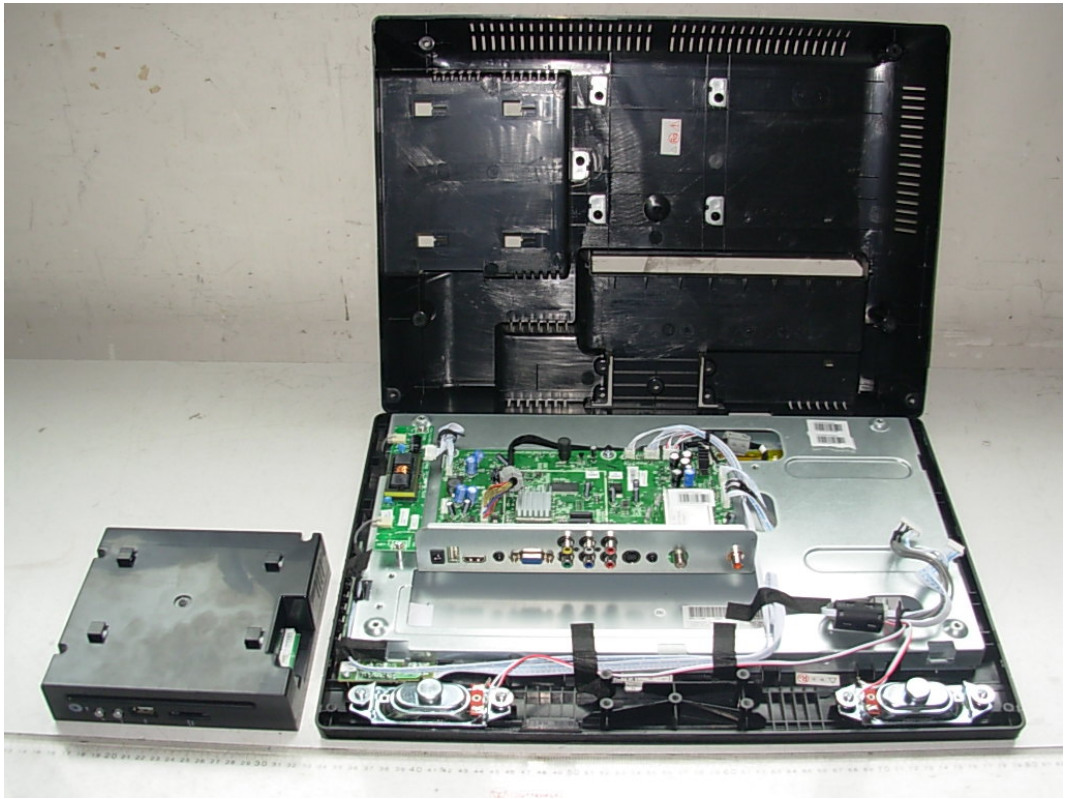
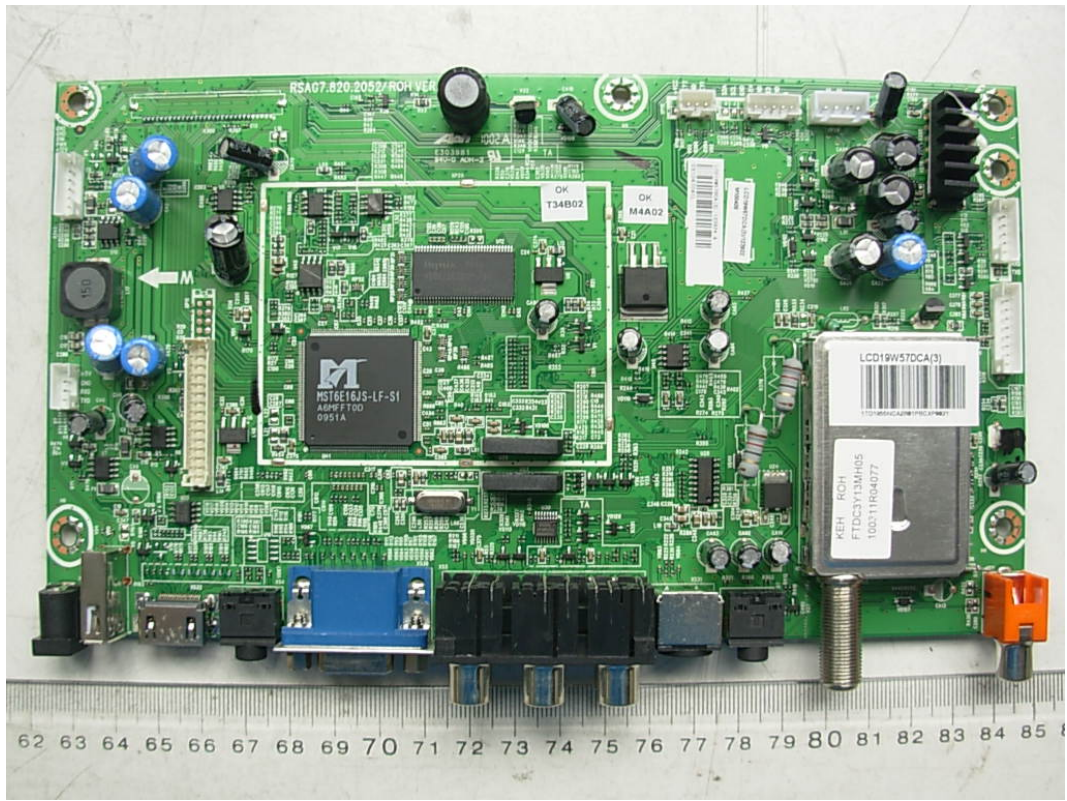


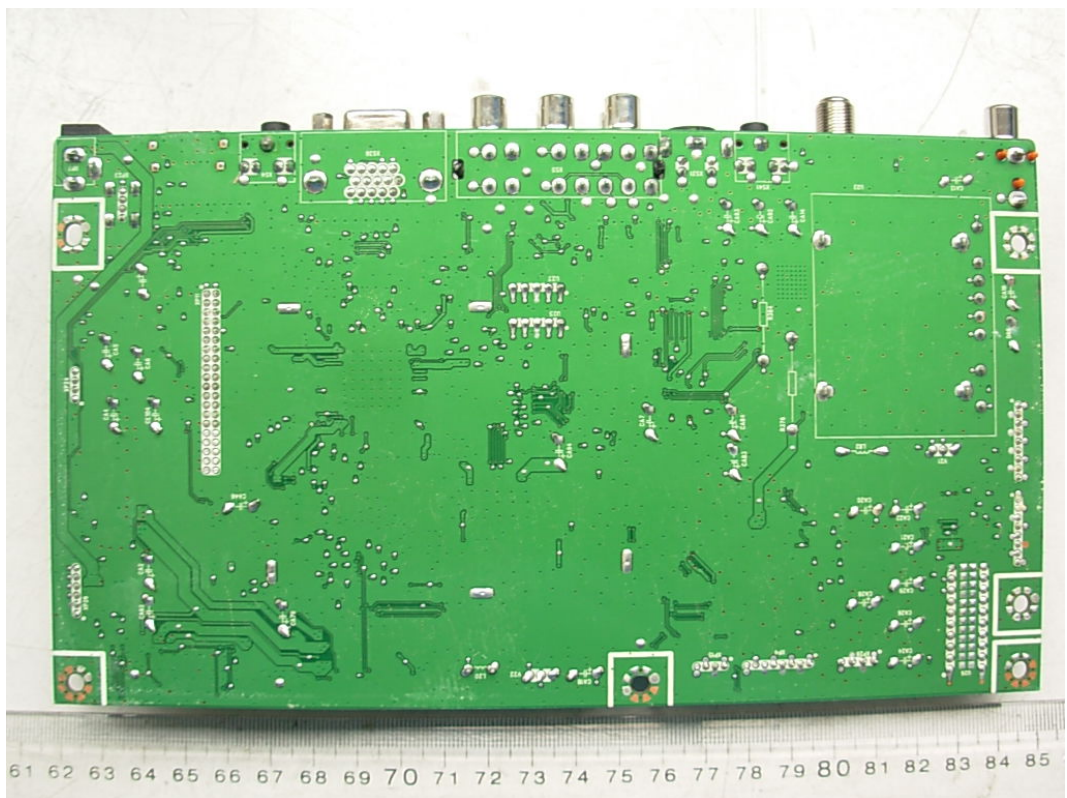
*FIGURE 1*  
*LCD TV/DVD COMBO (M/N: LCD19W57DCA)*  
*COVER REMOVED*



**FIGURE 2**  
**LCD TV/DVD COMBO (M/N: LCD19W57DCA)**  
**MAIN BOARD (COMPONENT SIDE)**

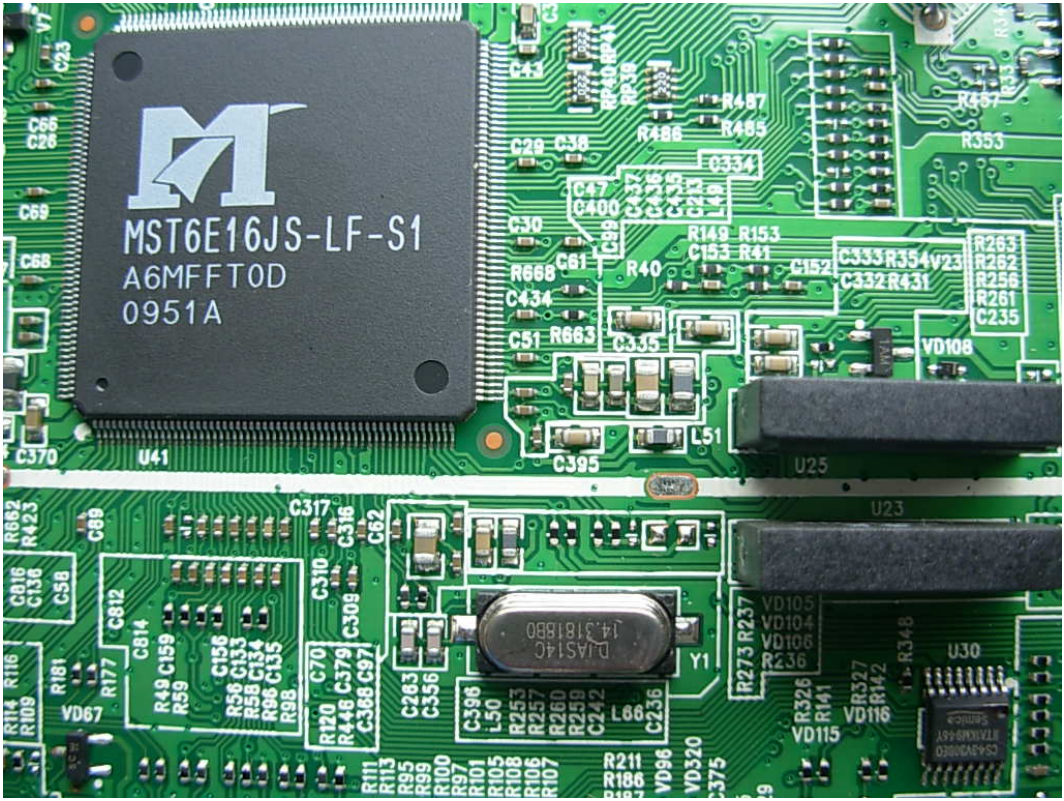


**FIGURE 3**  
**LCD TV/DVD COMBO (M/N: LCD19W57DCA)**  
**MAIN BOARD (SOLDERED SIDE)**





*FIGURE 4*  
*LCD TV/DVD COMBO (M/N: LCD19W57DCA)*  
*CRYSTAL & CHIP1 ON MAIN BOARD*



*FIGURE 5*  
*LCD TV/DVD COMBO (M/N: LCD19W57DCA)*  
*LABEL ON TUNER*

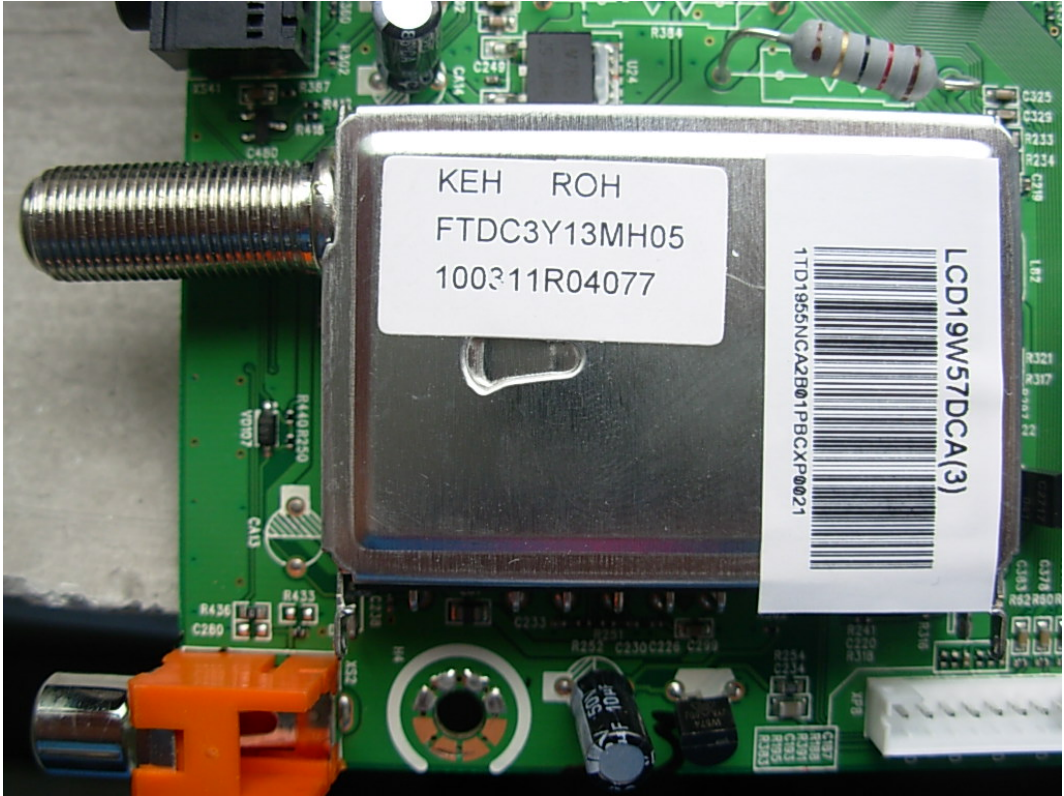




FIGURE 6  
LCD TV/DVD COMBO (M/N: LCD19W57DCA)  
HIGH VOLTAGE BOARD (COMPONENT SIDE)

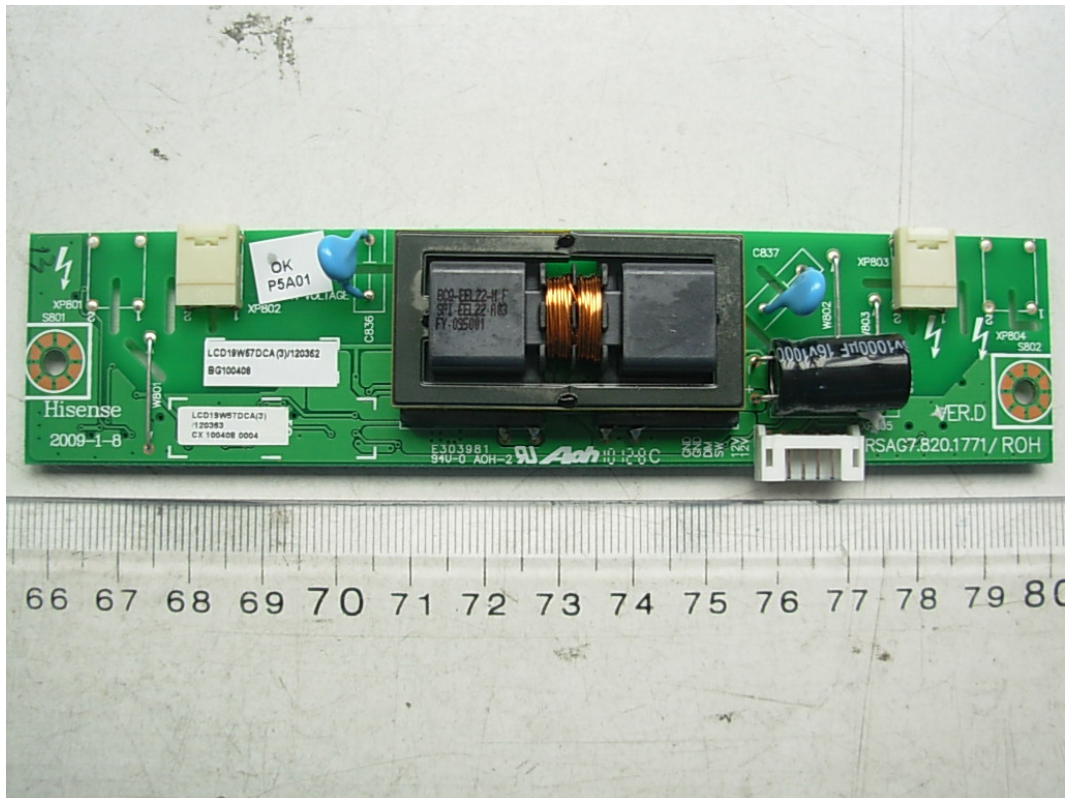


FIGURE 7  
LCD TV/DVD COMBO (M/N: LCD19W57DCA)  
HIGH VOLTAGE BOARD (SOLDERED SIDE)

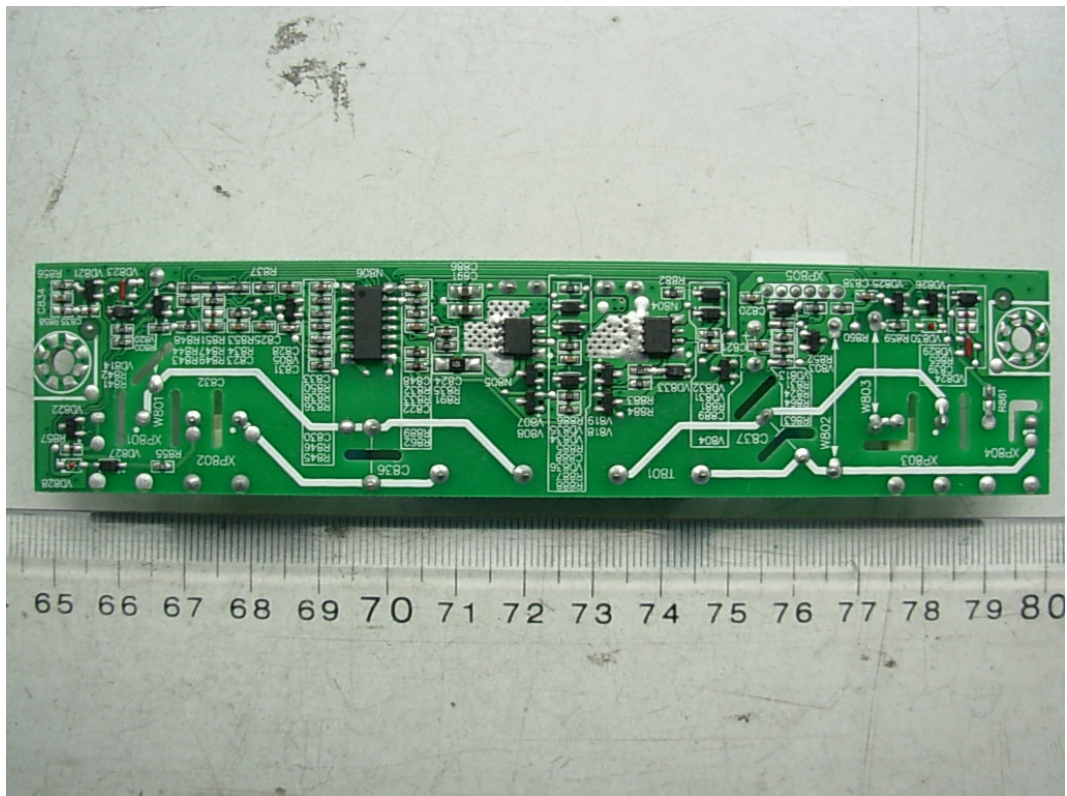


FIGURE 8  
LCD TV/DVD COMBO (M/N: LCD19W57DCA)  
LED BOARD (COMPONENT SIDE)

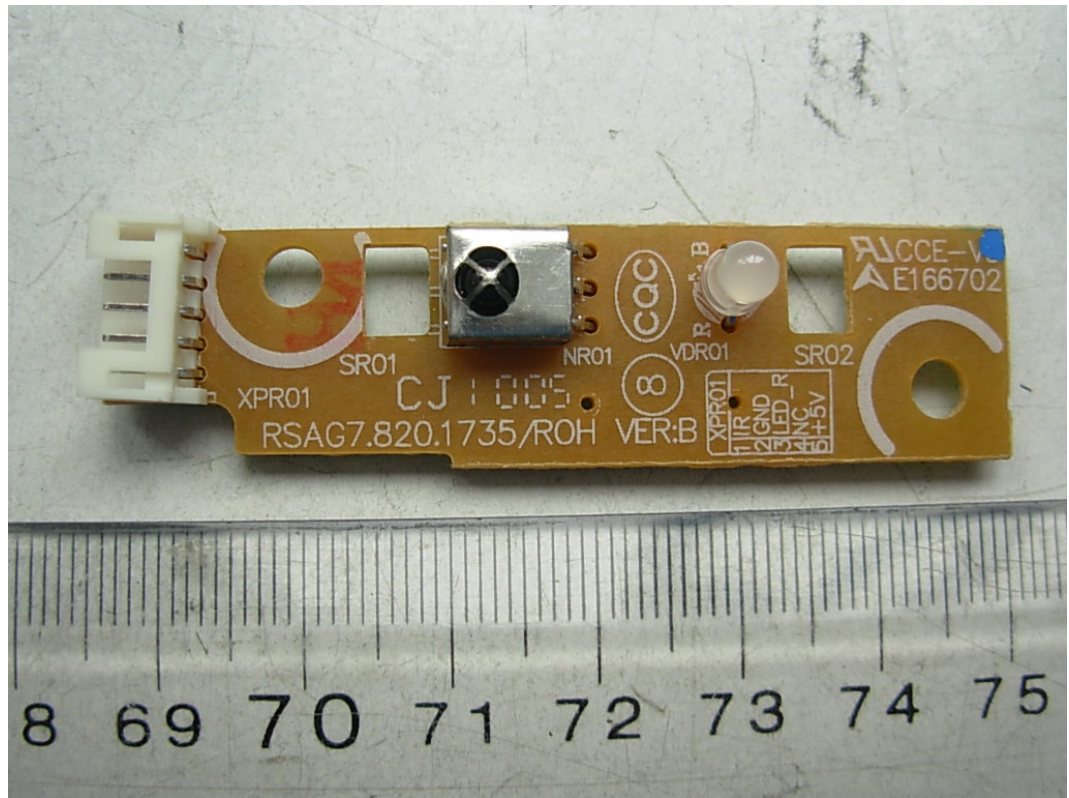


FIGURE 9  
LCD TV/DVD COMBO (M/N: LCD19W57DCA)  
LED BOARD (SOLDERED SIDE)

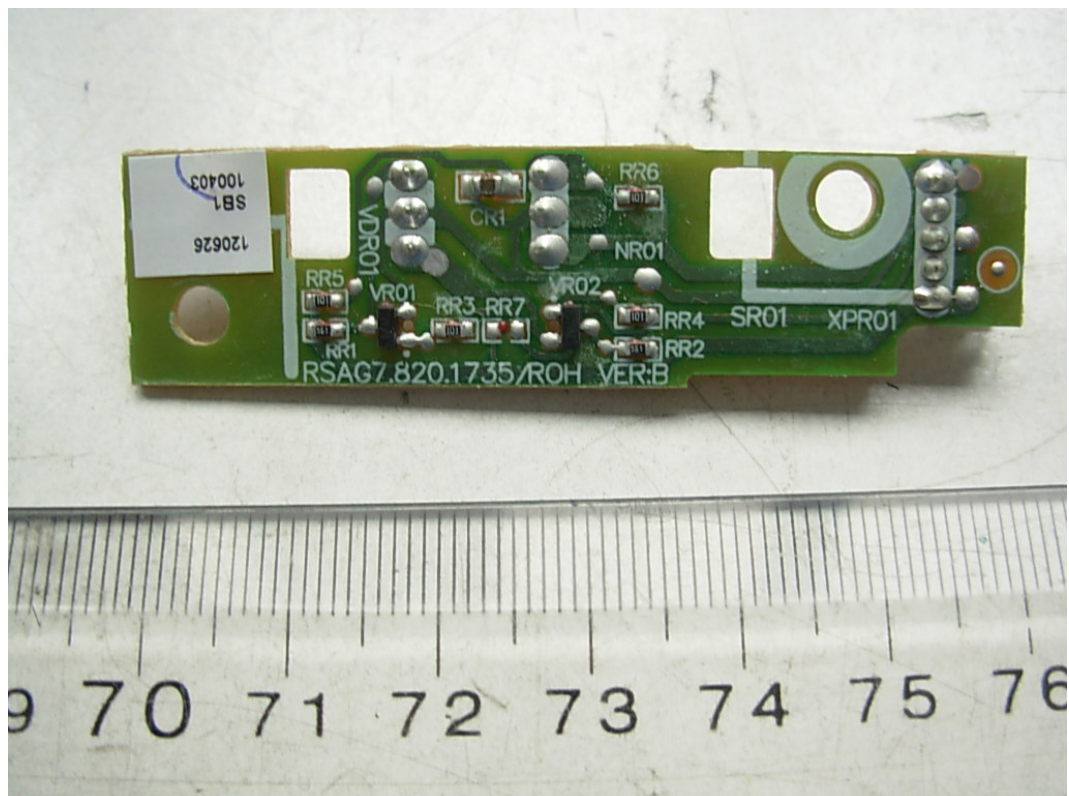




FIGURE 10  
LCD TV/DVD COMBO (M/N: LCD19W57DCA)  
BUTTON BOARD (COMPONENT SIDE)

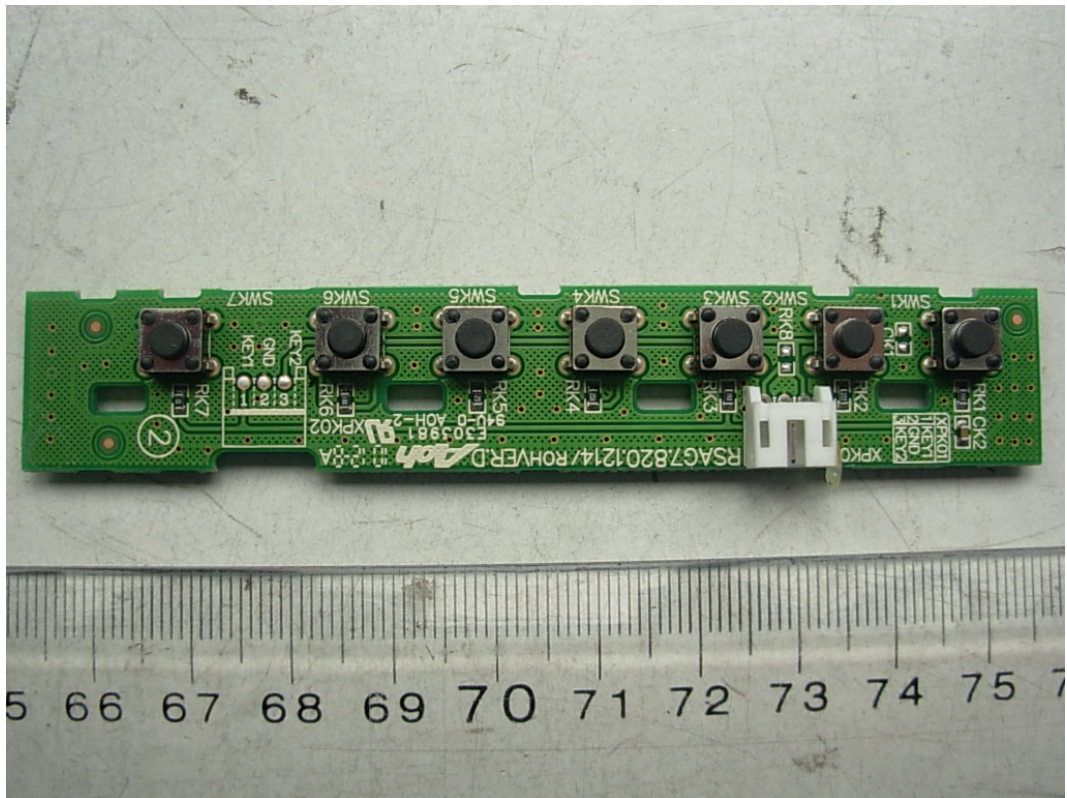
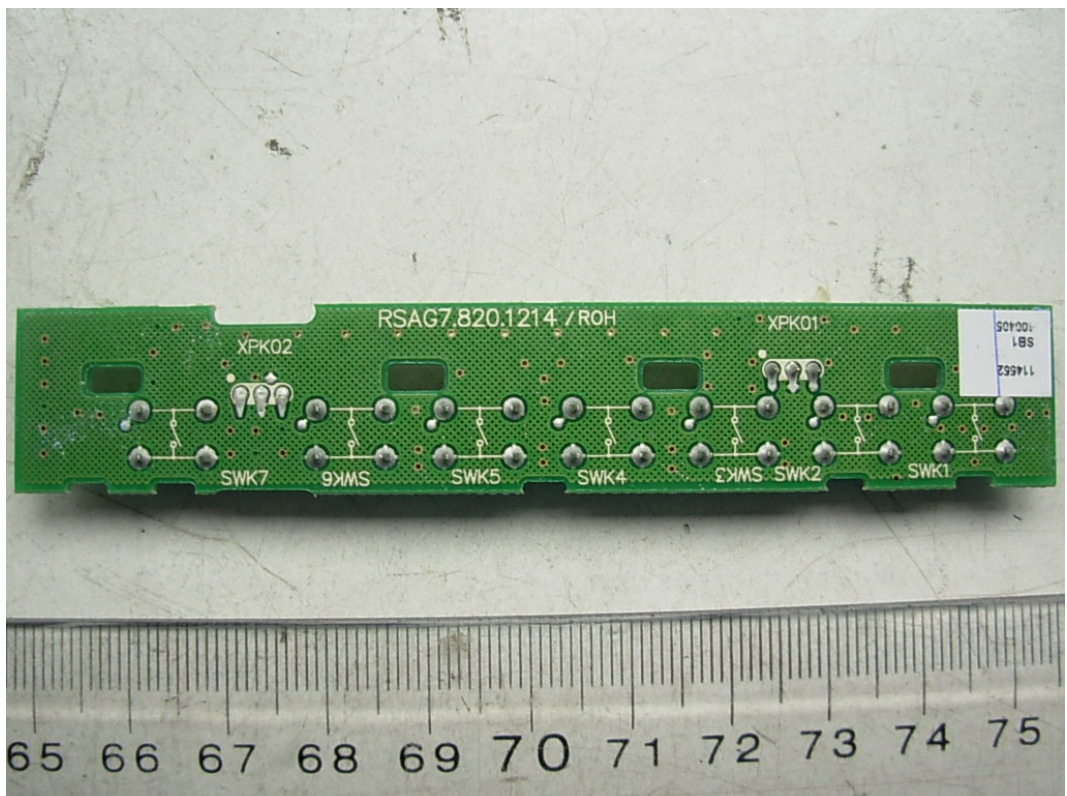
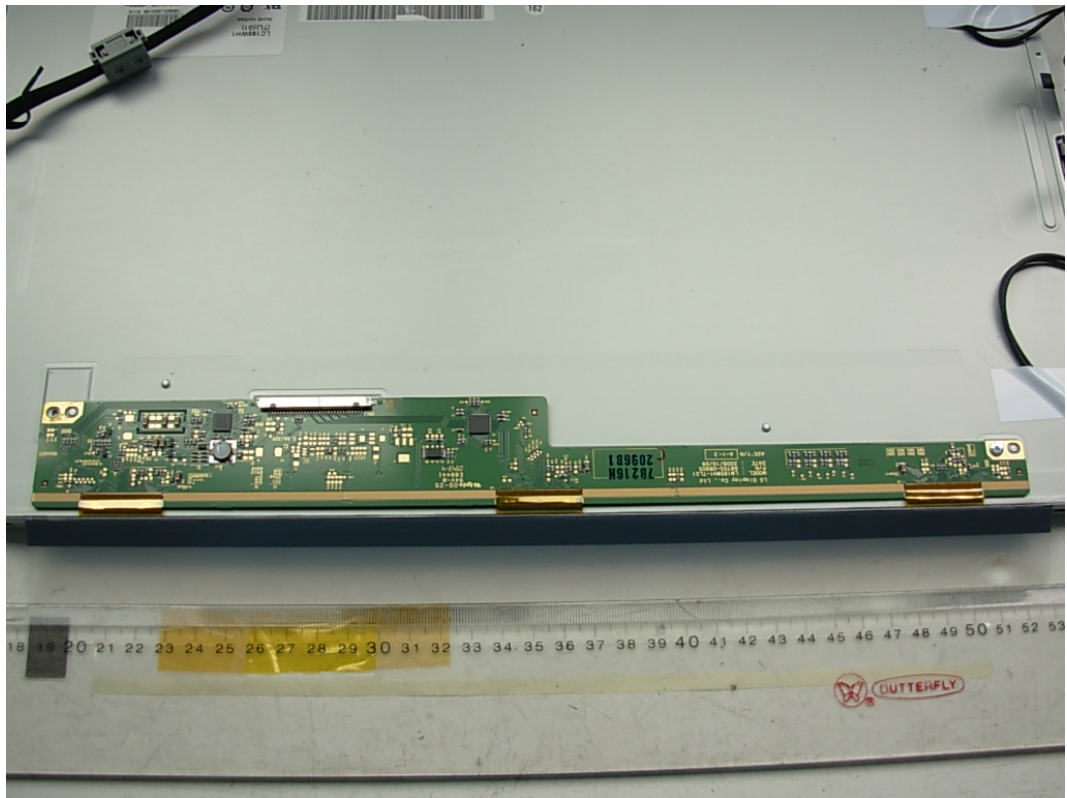


FIGURE 11  
LCD TV/DVD COMBO (M/N: LCD19W57DCA)  
BUTTON BOARD (SOLDERED SIDE)



*FIGURE 12*  
*LCD TV/DVD COMBO (M/N: LCD19W57DCA)*  
*DISPLAY BOARD (COMPONENT SIDE)*



*FIGURE 13*  
*LCD TV/DVD COMBO (M/N: LCD19W57DCA)*  
*DISPLAY BOARD (SOLDERED SIDE)*





FIGURE 14  
LCD TV/DVD COMBO (M/N: LCD19W57DCA)  
LABEL ON PANEL

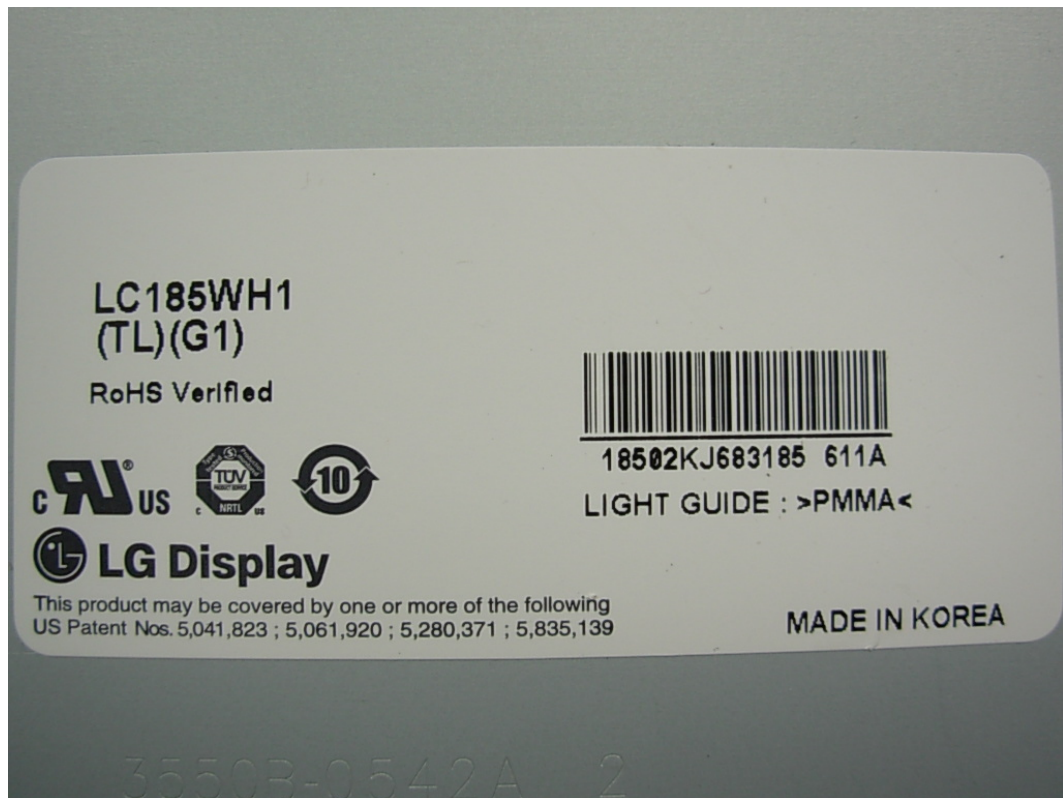




FIGURE 15  
LCD TV/DVD COMBO (M/N: LCD19W57DCA)  
DVD FRONT



FIGURE 16  
LCD TV/DVD COMBO (M/N: LCD19W57DCA)  
DVD BACK

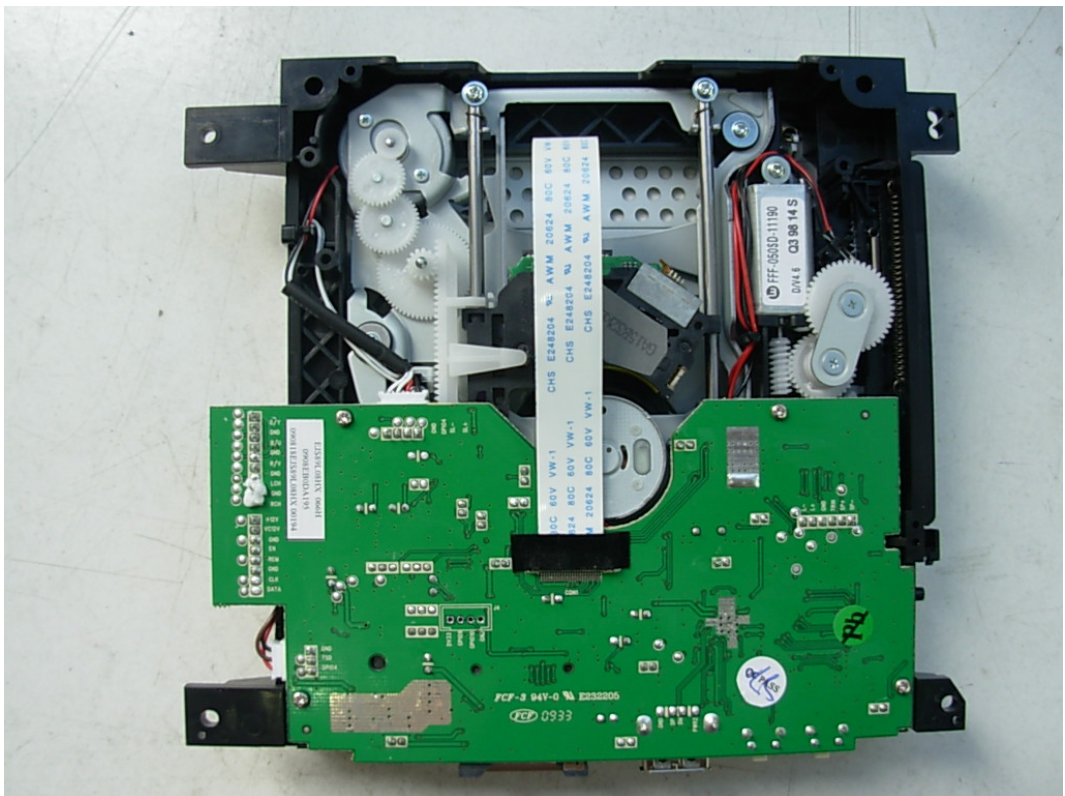


FIGURE 17  
LCD TV/DVD COMBO (M/N: LCD19W57DCA)  
ADAPTER FRONT VIEW



FIGURE 18  
LCD TV/DVD COMBO (M/N: LCD19W57DCA)  
ADAPTER BACK VIEW





FIGURE 19  
LCD TV/DVD COMBO (M/N: LCD19W57DCA)  
ADAPTER AC IN PORT



FIGURE 20  
LCD TV/DVD COMBO (M/N: LCD19W57DCA)  
LABEL ON ADAPTER



*FIGURE 21*  
*LCD TV/DVD COMBO (M/N: LCD19W57DCA)*  
*ADAPTER COVER REMOVED*

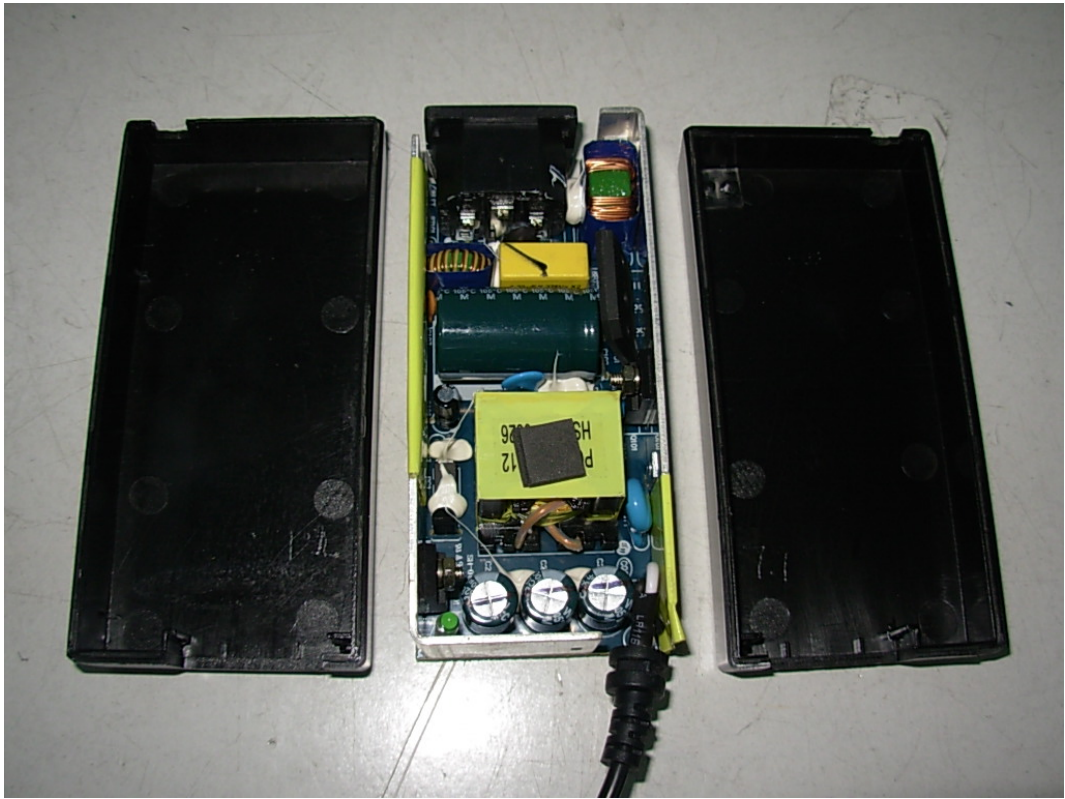




FIGURE 22  
LCD TV/DVD COMBO (M/N: LCD19W57DCA)  
POWER BOARD (COMPONENT SIDE)

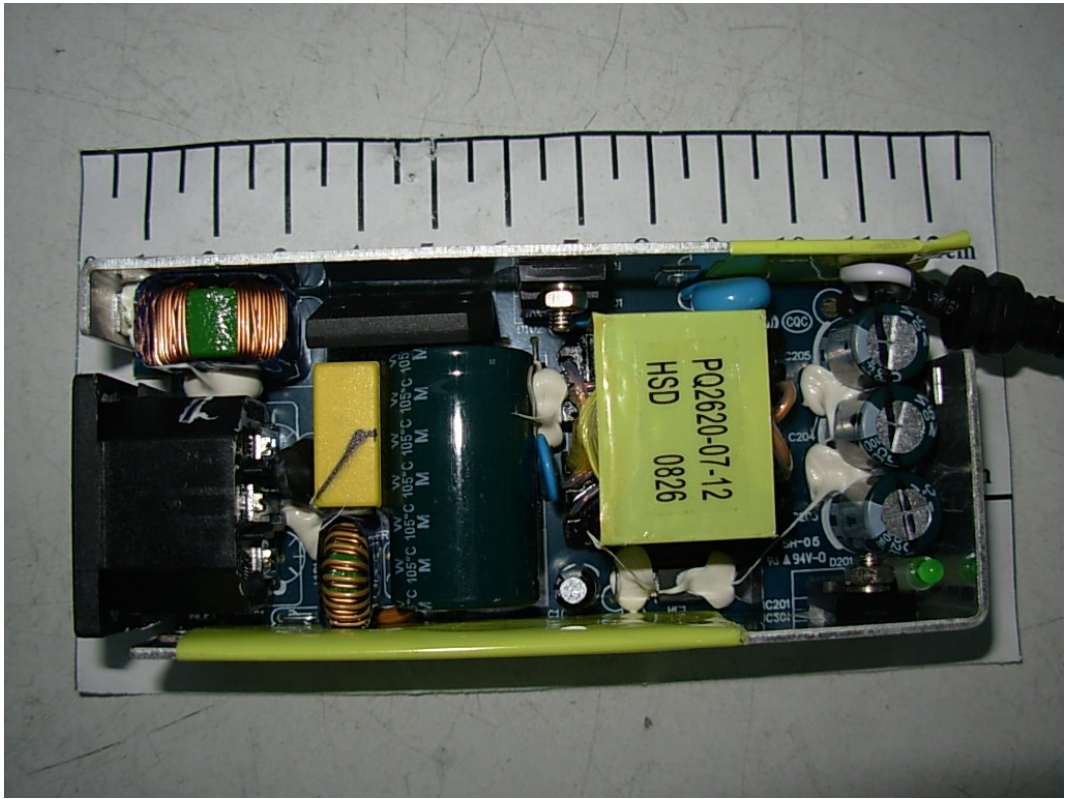


FIGURE 23  
LCD TV/DVD COMBO (M/N: LCD19W57DCA)  
POWER BOARD (SOLDERED SIDE)

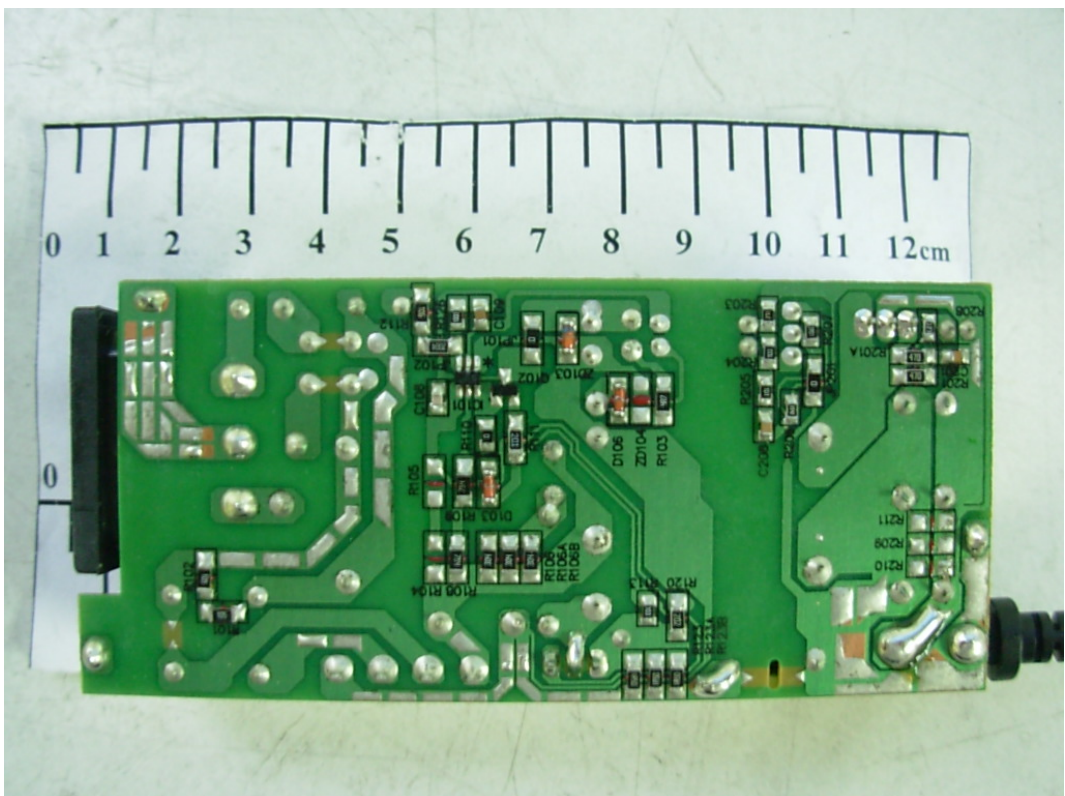




FIGURE 24  
LCD TV/DVD COMBO (M/N: LCD19W57DCA)  
DEBUG 1

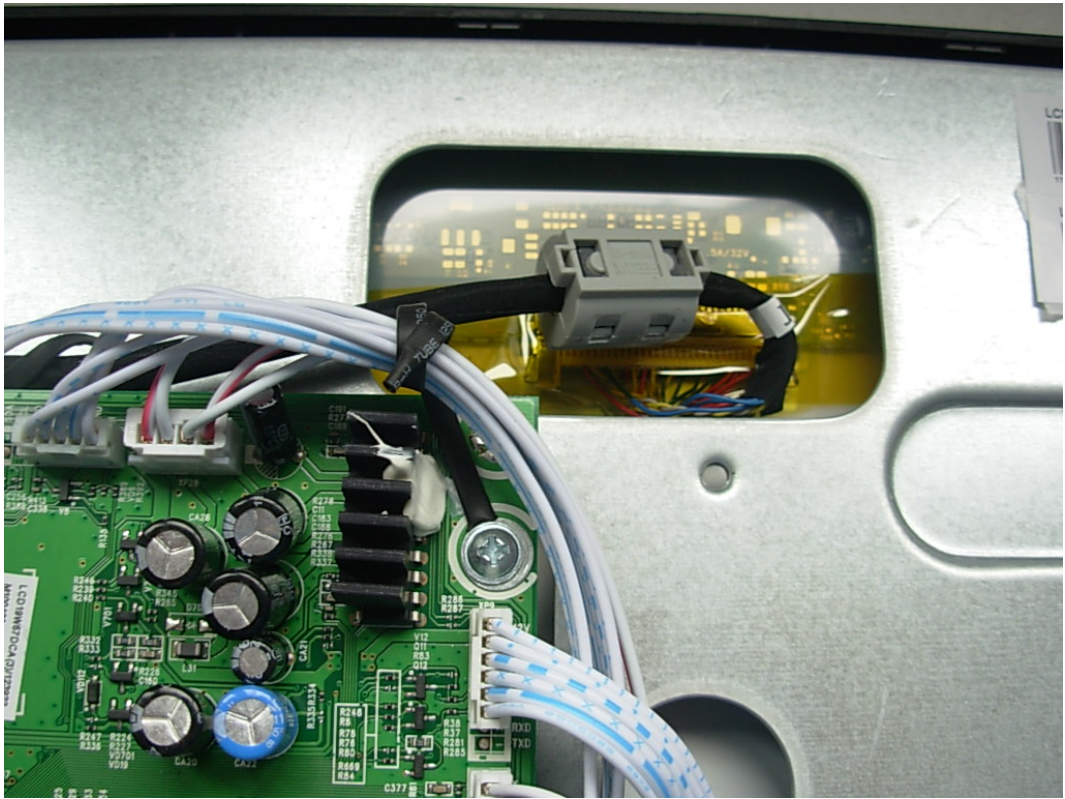


FIGURE 25  
LCD TV/DVD COMBO (M/N: LCD19W57DCA)  
DEBUG 2

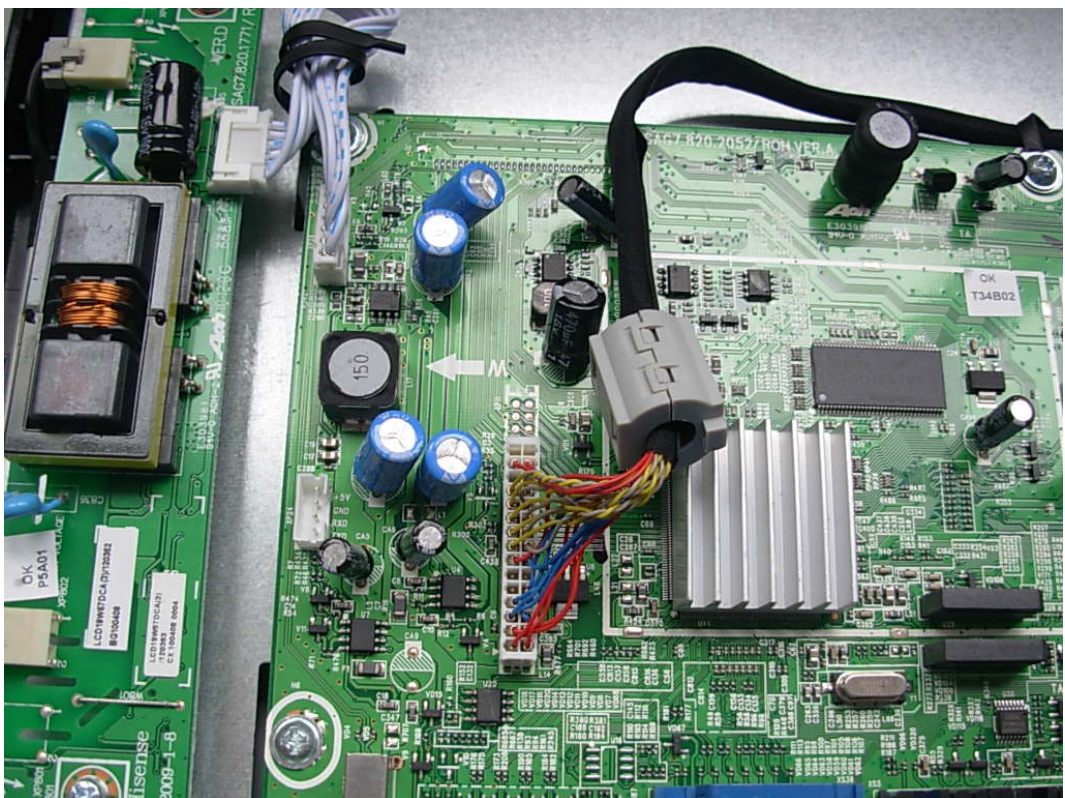




FIGURE 26  
LCD TV/DVD COMBO (M/N: LCD19W57DCA)  
DEBUG 3

