

*FIGURE 1*  
*LCD TV/DVD COMBO (M/N: LCD19W57DCA)*  
*COVER REMOVED*



*FIGURE 2*  
*LCD TV/DVD COMBO (M/N: LCD19W57DCA)*  
*MAIN BOARD (COMPONENT SIDE)*



*FIGURE 3*  
*LCD TV/DVD COMBO (M/N: LCD19W57DCA)*  
*MAIN BOARD (SOLDERED SIDE)*

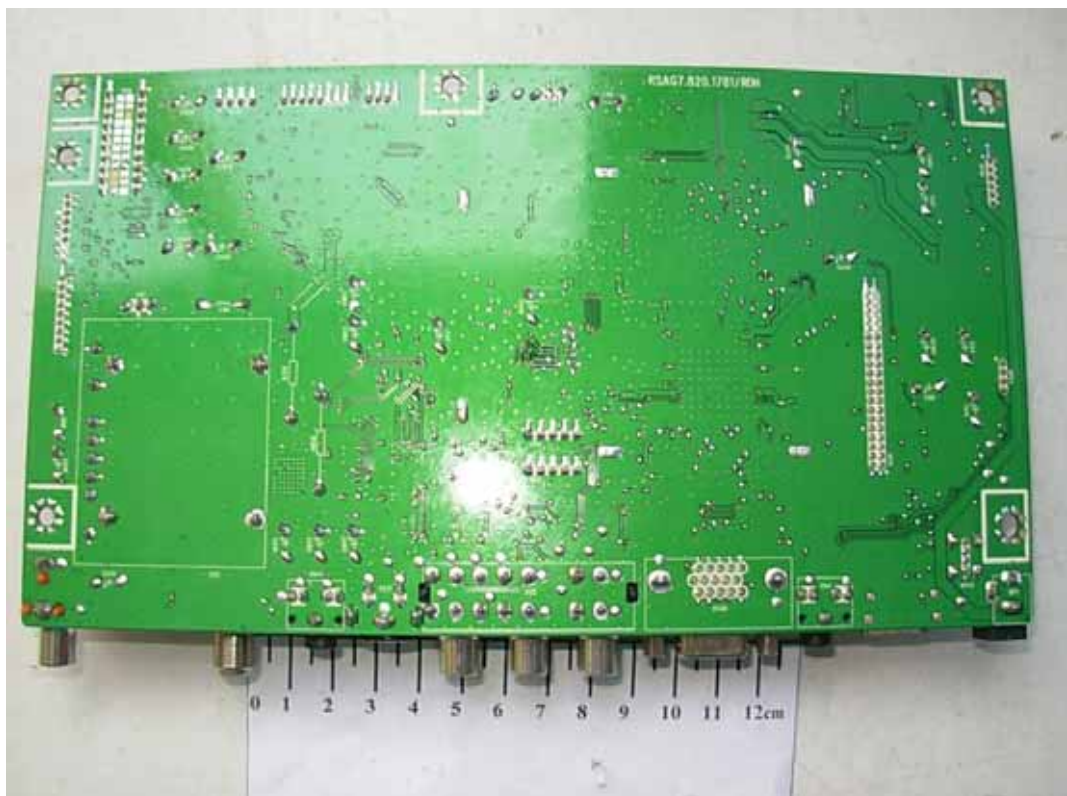




FIGURE 6  
LCD TV/DVD COMBO (M/N: LCD19W57DCA)  
LABEL ON TUNER



*FIGURE 7*  
*LCD TV/DVD COMBO (M/N: LCD19W57DCA)*  
*HIGH VOLTAGE BOARD (COMPONENT SIDE)*



*FIGURE 8*  
*LCD TV/DVD COMBO (M/N: LCD19W57DCA)*  
*HIGH VOLTAGE BOARD (SOLDERED SIDE)*

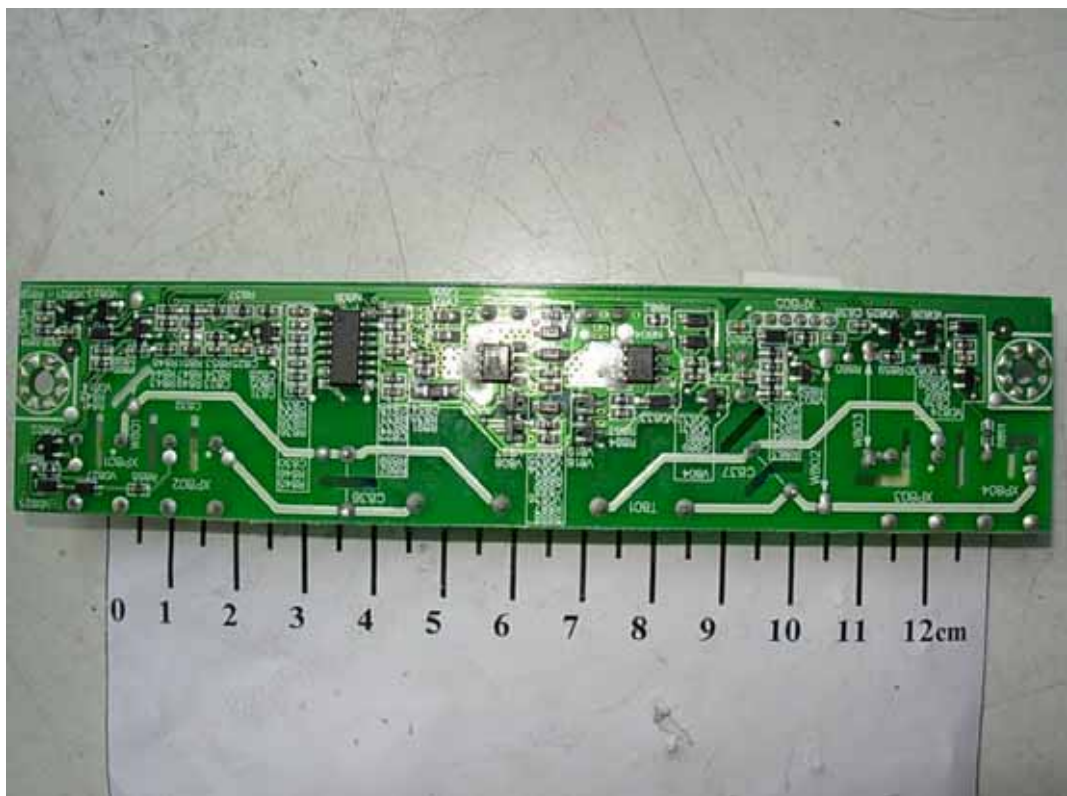


FIGURE 9  
LCD TV/DVD COMBO (M/N: LCD19W57DCA)  
LED BOARD (COMPONENT SIDE)

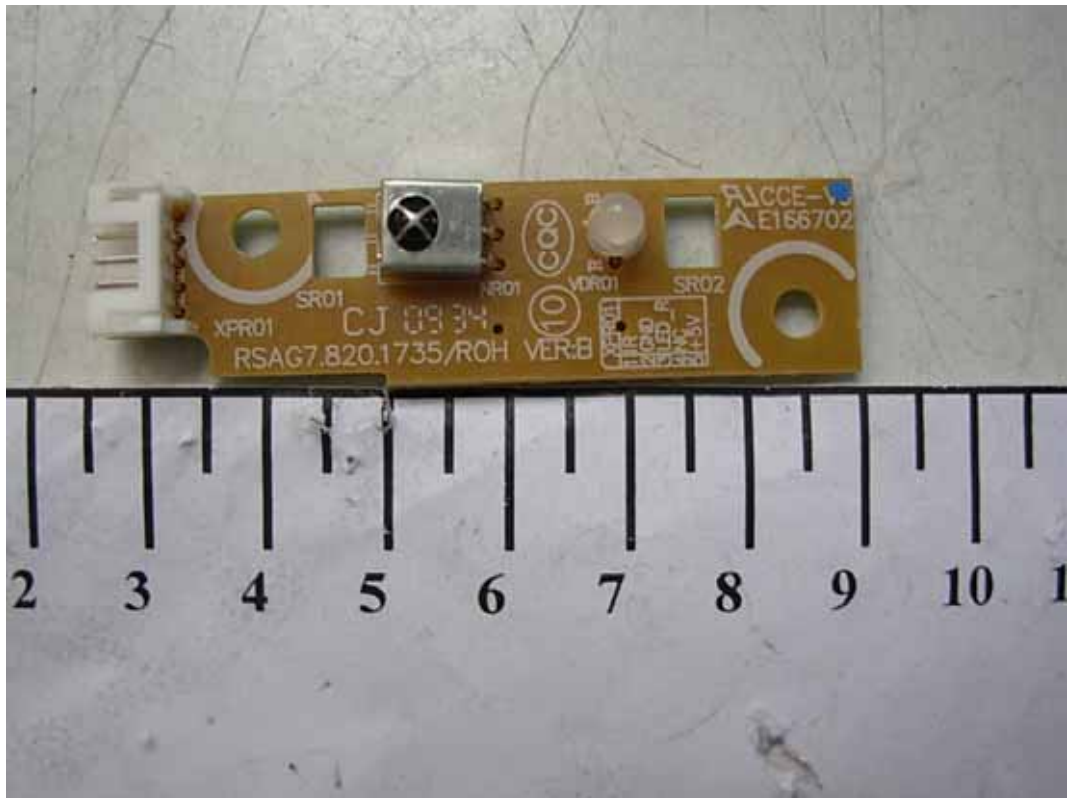


FIGURE 10  
LCD TV/DVD COMBO (M/N: LCD19W57DCA)  
LED BOARD (SOLDERED SIDE)

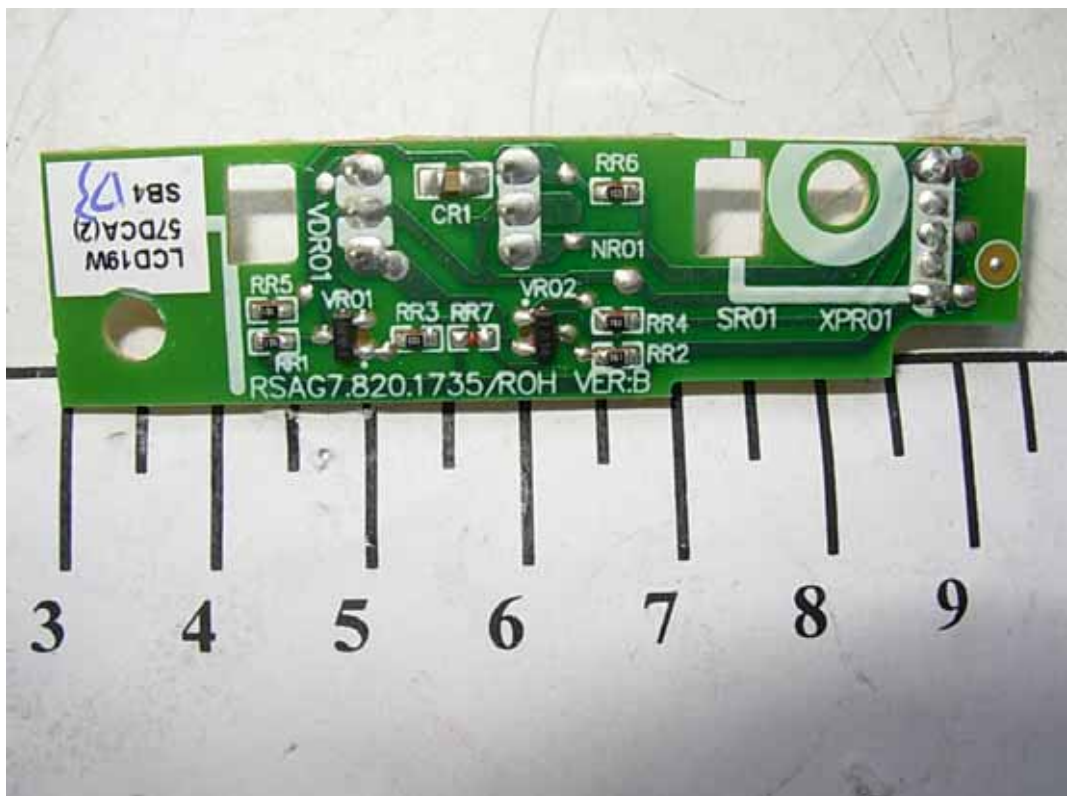


FIGURE 11  
LCD TV/DVD COMBO (M/N: LCD19W57DCA)  
BUTTON BOARD (COMPONENT SIDE)



FIGURE 12  
LCD TV/DVD COMBO (M/N: LCD19W57DCA)  
BUTTON BOARD (SOLDERED SIDE)

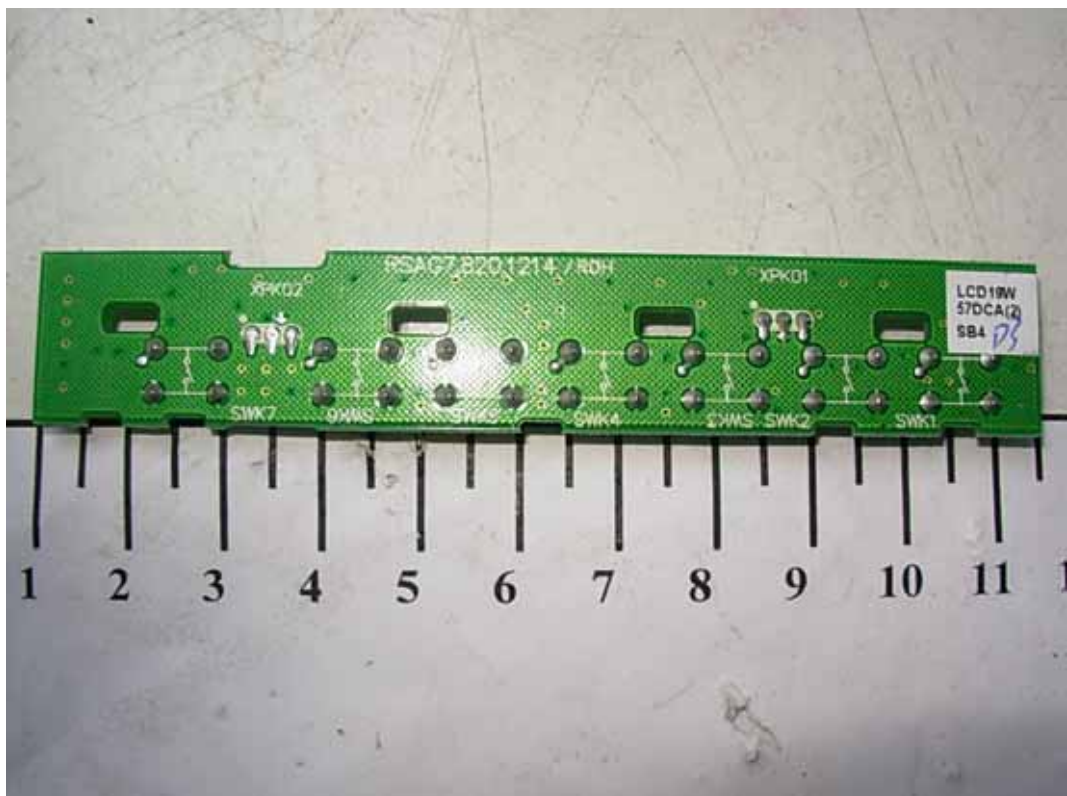


FIGURE 13  
LCD TV/DVD COMBO (M/N: LCD19W57DCA)  
LABEL ON PANEL







FIGURE 16  
LCD TV/DVD COMBO (M/N: LCD19W57DCA)  
ADAPTER FRONT VIEW



FIGURE 17  
LCD TV/DVD COMBO (M/N: LCD19W57DCA)  
ADAPTER BACK VIEW



FIGURE 18  
LCD TV/DVD COMBO (M/N: LCD19W57DCA)  
ADAPTER AC IN PORT



FIGURE 19  
LCD TV/DVD COMBO (M/N: LCD19W57DCA)  
LABEL ON ADAPTER



*FIGURE 20*  
*LCD TV/DVD COMBO (M/N: LCD19W57DCA)*  
*ADAPTER COVER REMOVED*



FIGURE 21  
LCD TV/DVD COMBO (M/N: LCD19W57DCA)  
POWER BOARD (COMPONENT SIDE)

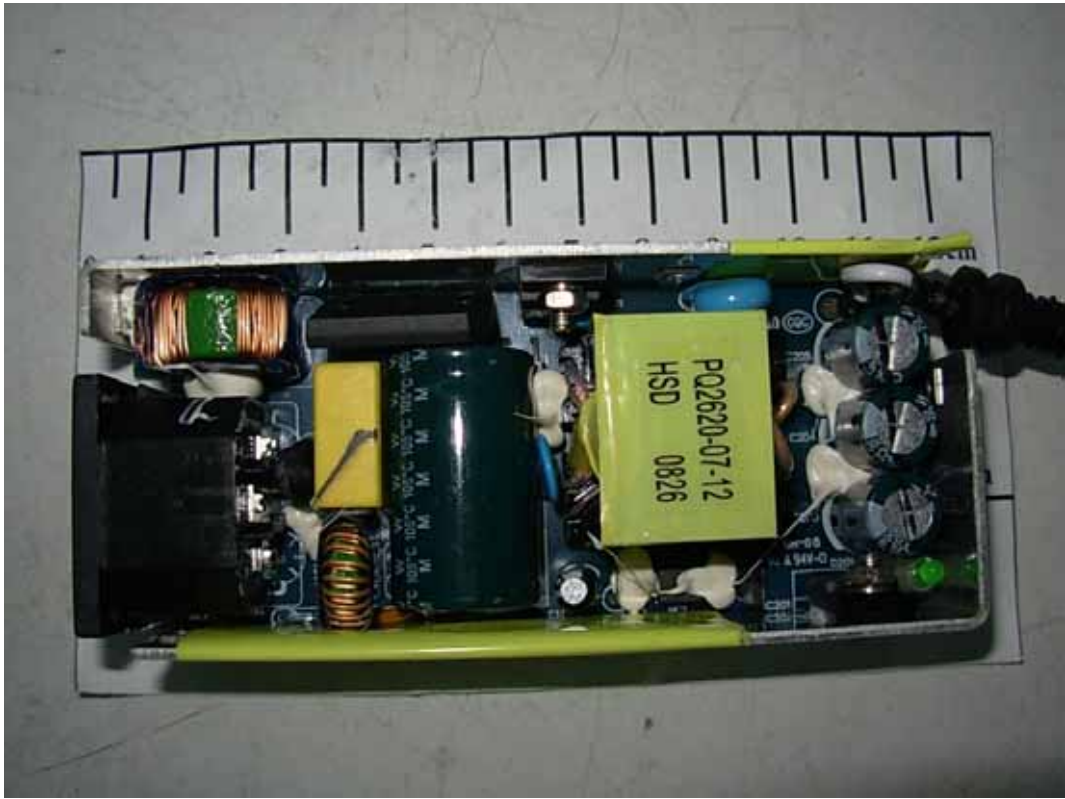


FIGURE 22  
LCD TV/DVD COMBO (M/N: LCD19W57DCA)  
POWER BOARD (SOLDERED SIDE)

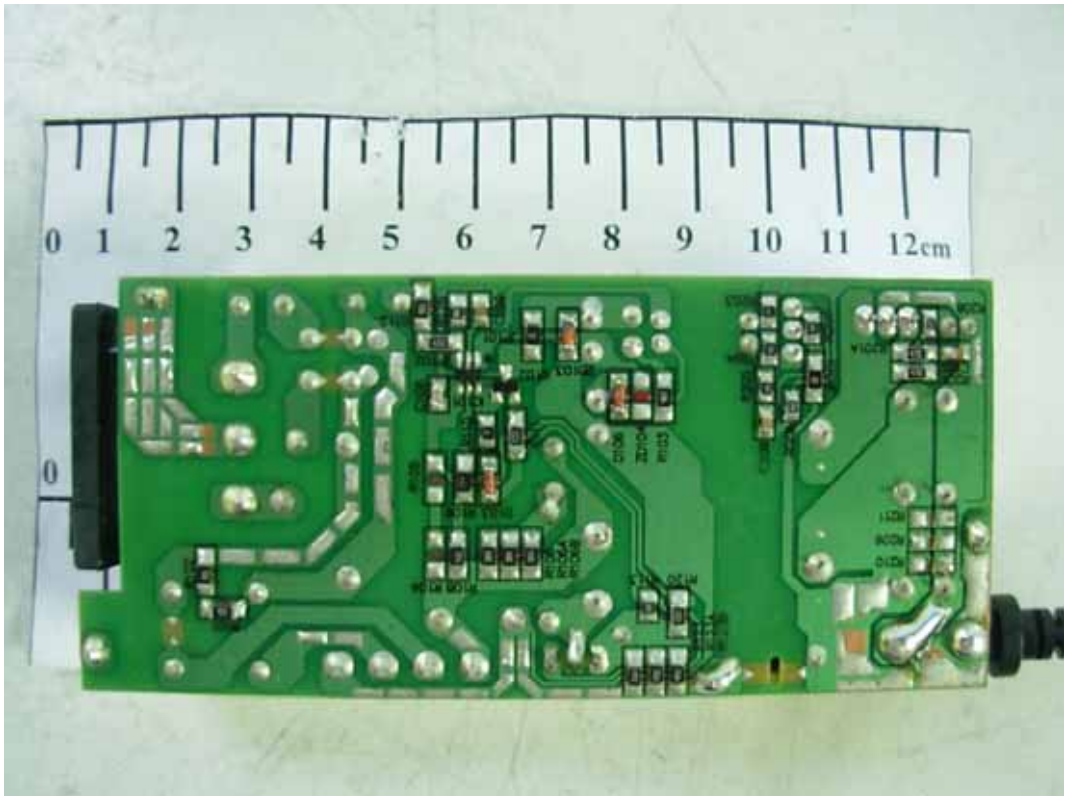


FIGURE 23  
LCD TV/DVD COMBO (M/N: LCD19W57DCA)  
DEBUG 1



FIGURE 24  
LCD TV/DVD COMBO (M/N: LCD19W57DCA)  
DEBUG 2

