

*FIGURE 1*  
*LED LCD TV (M/N: 65H8D)*  
*COVER REMOVED*



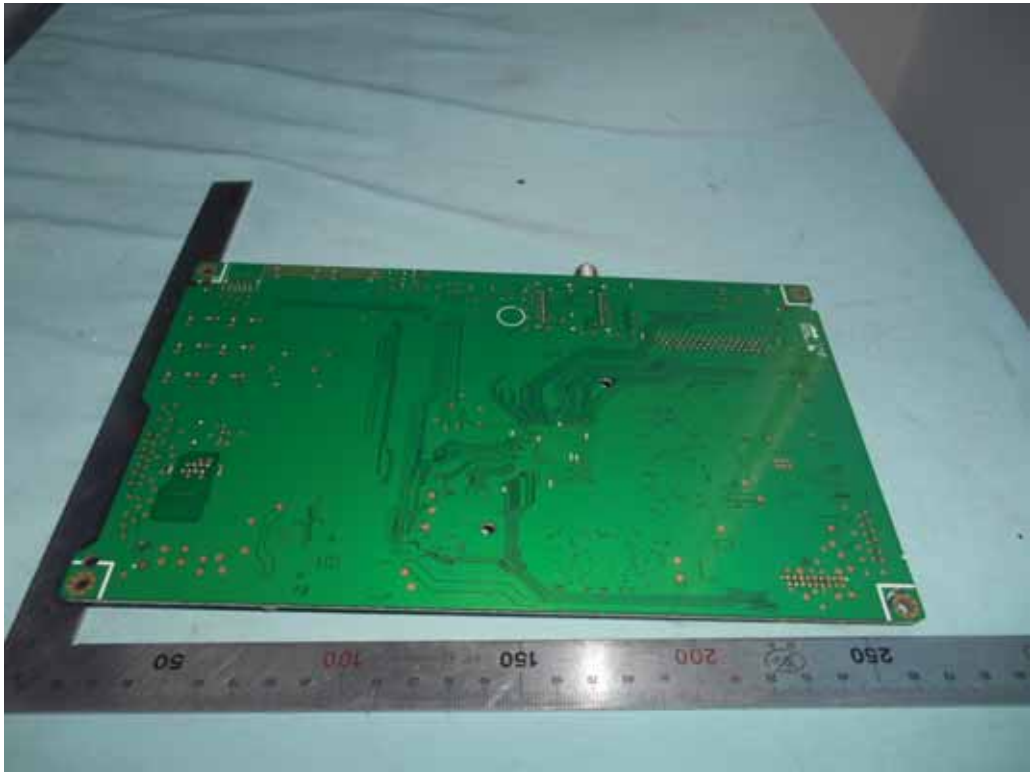
FIGURE 2  
LED LCD TV (M/N: 65H8D)  
PANEL LABEL



FIGURE 3  
LED LCD TV (M/N: 65H8D)  
MAIN BOARD (COMPONENT SIDE)



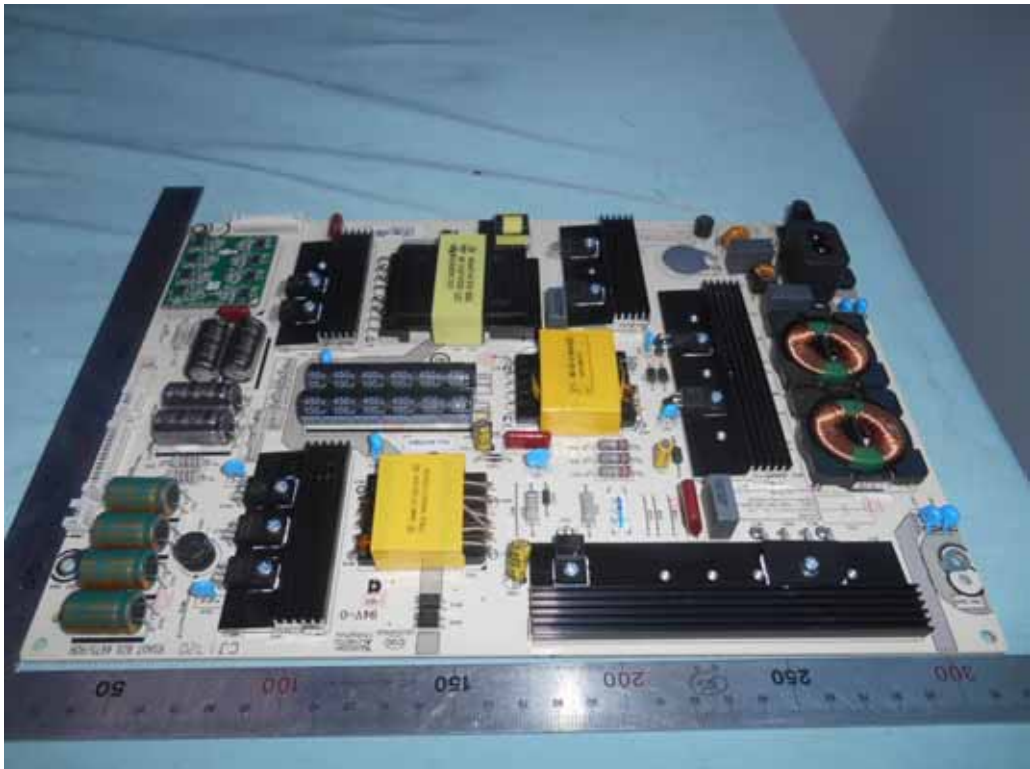
*FIGURE 4*  
*LED LCD TV (M/N: 65H8D)*  
*MAIN BOARD (SOLDERED SIDE)*



*FIGURE 5*  
*LED LCD TV (M/N: 65H8D)*  
*CHIP AND CRYSTAL ON MAIN BOARD*

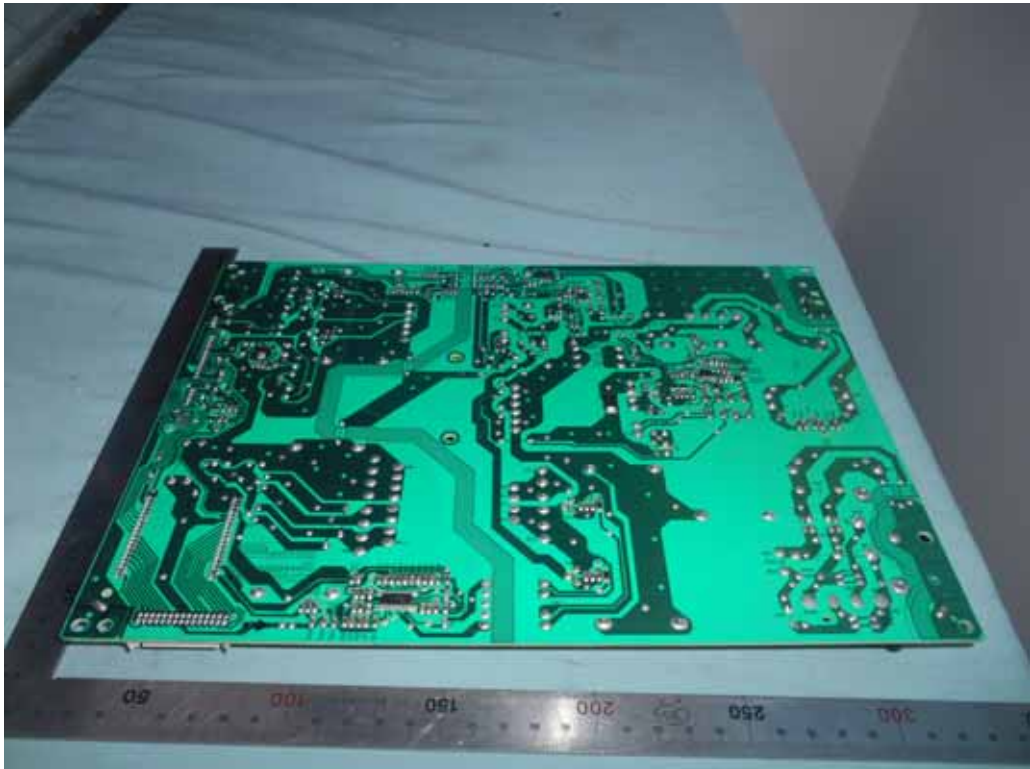


*FIGURE 6*  
*LED LCD TV (M/N: 65H8D)*  
*POWER BOARD (COMPONENT SIDE)*





*FIGURE 7*  
*LED LCD TV (M/N: 55H6D)*  
*POWER BOARD (SOLDERED SIDE)*



*FIGURE 8*  
*LED LCD TV (M/N: 65H8D)*  
*TUNER BOARD*



FIGURE 9  
LED LCD TV (M/N: 65H8D)  
RF BOARD (COMPONENT SIDE)



FIGURE 10  
LED LCD TV (M/N: 65H8D)  
RF BOARD (SOLDERED SIDE)



FIGURE 11  
LED LCD TV (M/N: 65H8D)  
RF BOARD LABEL



FIGURE 12  
LED LCD TV (M/N: 65H8D)  
RF BOARD COVER REMOVED





*FIGURE 13*  
*LED LCD TV (M/N: 65H8D)*  
*PANEL CONTROL BOARD (COMPONENT SIDE)*



*FIGURE 14*  
*LED LCD TV (M/N: 65H8D)*  
*PANEL CONTROL BOARD (SOLDERED SIDE)*

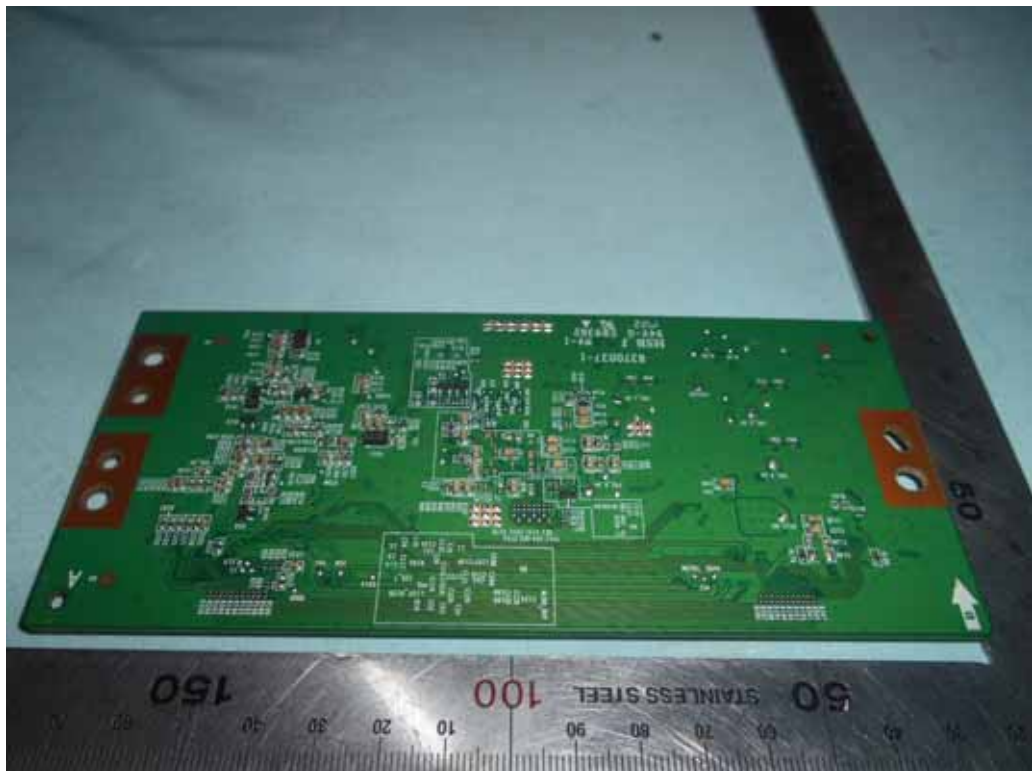




FIGURE 15  
LED LCD TV (M/N: 65H8D)  
CHIP ON PANEL CONTROL BOARD



FIGURE 16  
LED LCD TV (M/N: 65H8D)  
KEY BOARD (COMPONENT SIDE)



FIGURE 17  
LED LCD TV (M/N: 65H8D)  
KEY BOARD (SOLDERED SIDE)

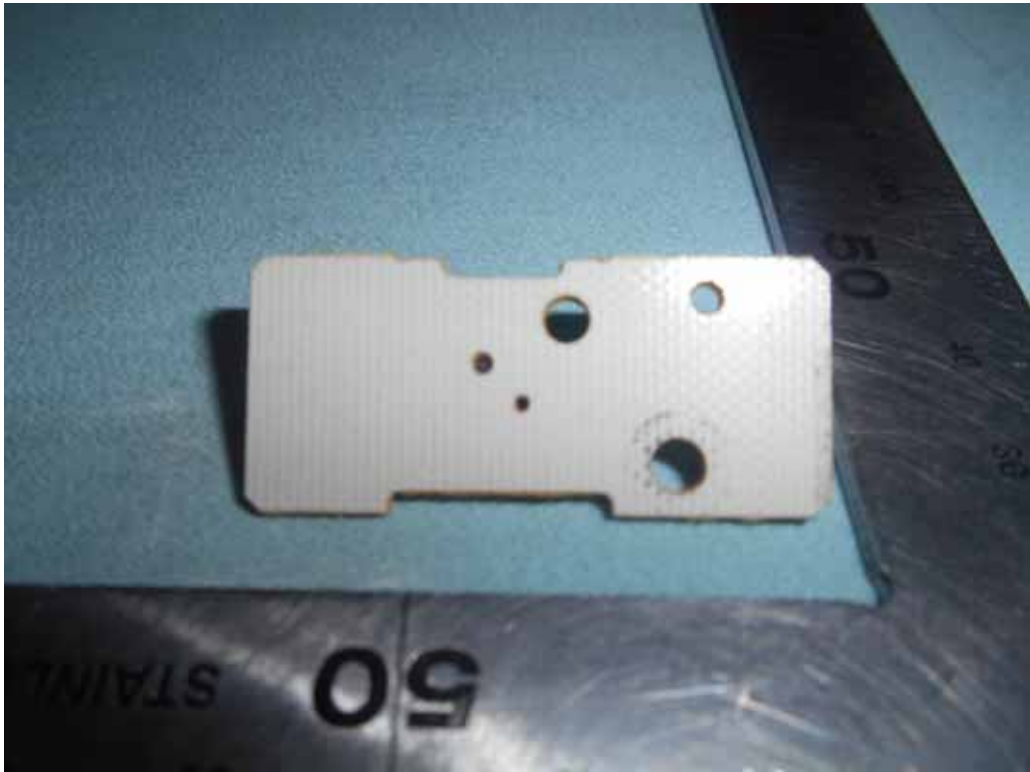


FIGURE 18  
LED LCD TV (M/N: 65H8D)  
IR BOARD (COMPONENT SIDE)





FIGURE 19  
LED LCD TV (M/N: 65H8D)  
IR BOARD (SOLDERED SIDE)



FIGURE 20  
LED LCD TV (M/N: 65H8D)  
DEBUG#1





*FIGURE 21*  
*LED LCD TV (M/N: 65H8D)*  
*DEBUG#2*

