

FIGURE 1
LED LCD TV (M/N: LC-50N8002U)
COVER REMOVED



FIGURE 2
LED LCD TV (M/N: LC-50N8002U)
PANEL LABEL



FIGURE 3
LED LCD TV (M/N: LC-50N8002U)
MAIN BOARD (COMPONENT SIDE)



FIGURE 4
LED LCD TV (M/N: LC-50N8002U)
MAIN BOARD (SOLDERED SIDE)

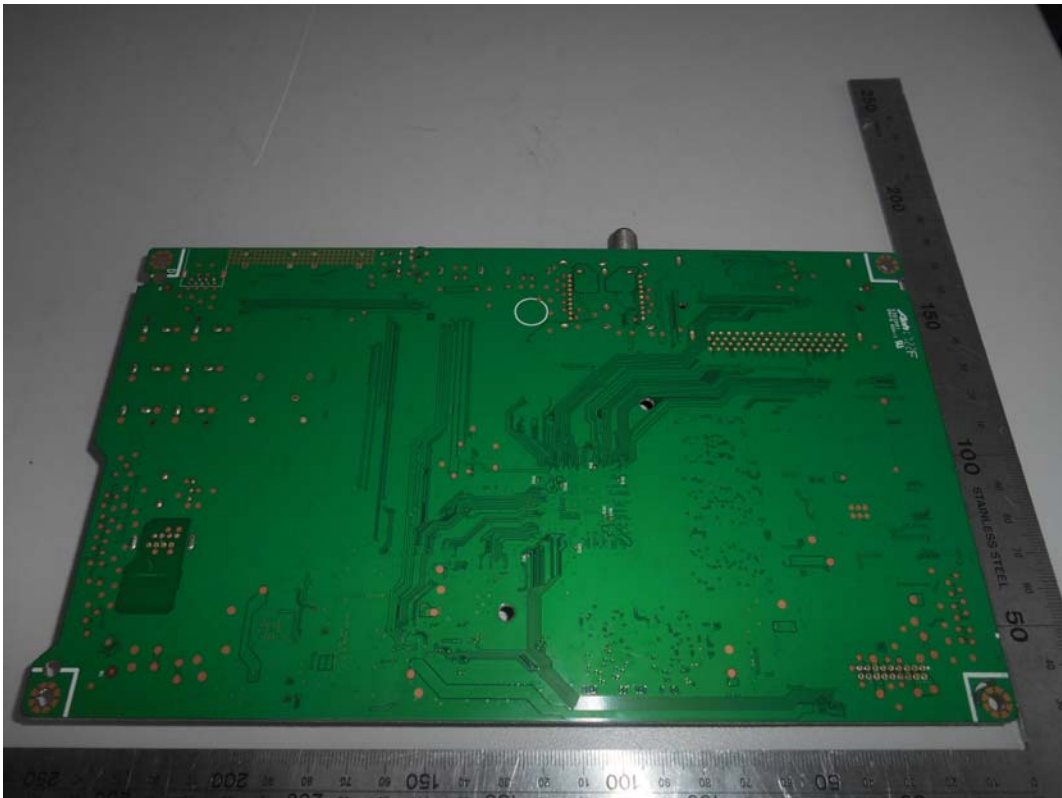
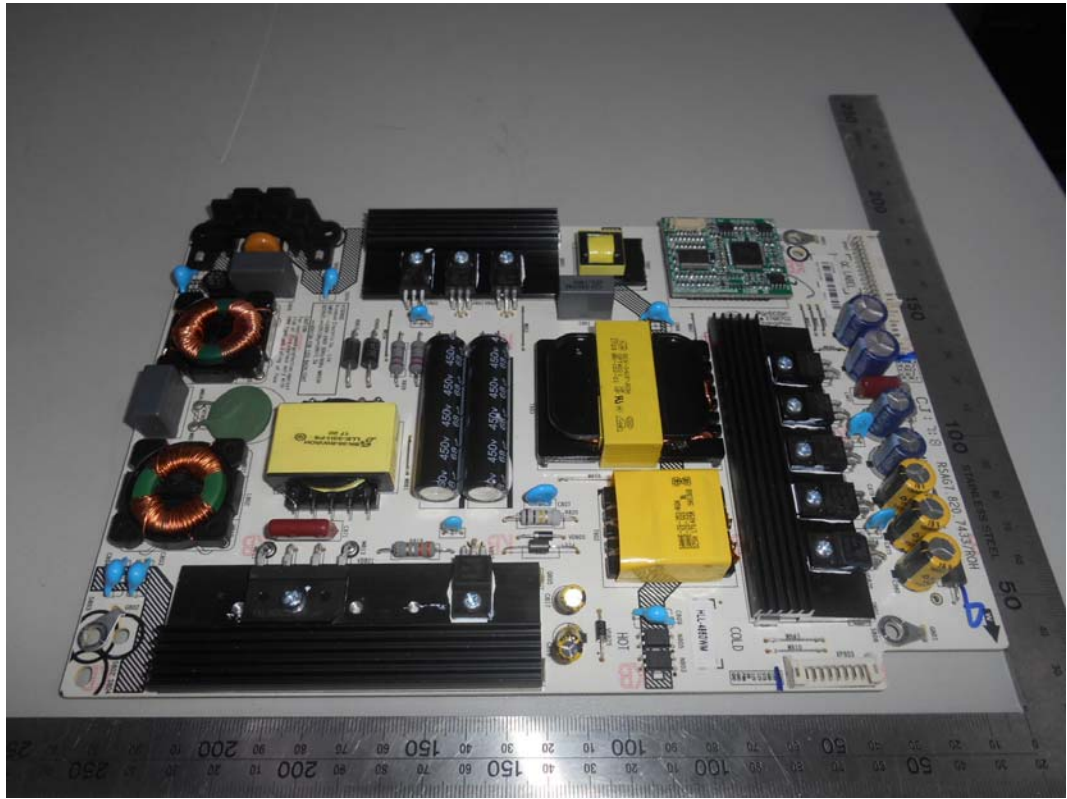


FIGURE 5
LED LCD TV (M/N: LC-50N8002U)
CRYSTAL & CHIP ON MAIN BOARD



*FIGURE 6
LED LCD TV (M/N: LC-50N8002U)
POWER BOARD#1 (COMPONENT SIDE)*



*FIGURE 7
LED LCD TV (M/N: LC-50N8002U)
POWER BOARD#1 (SOLDERED SIDE)*

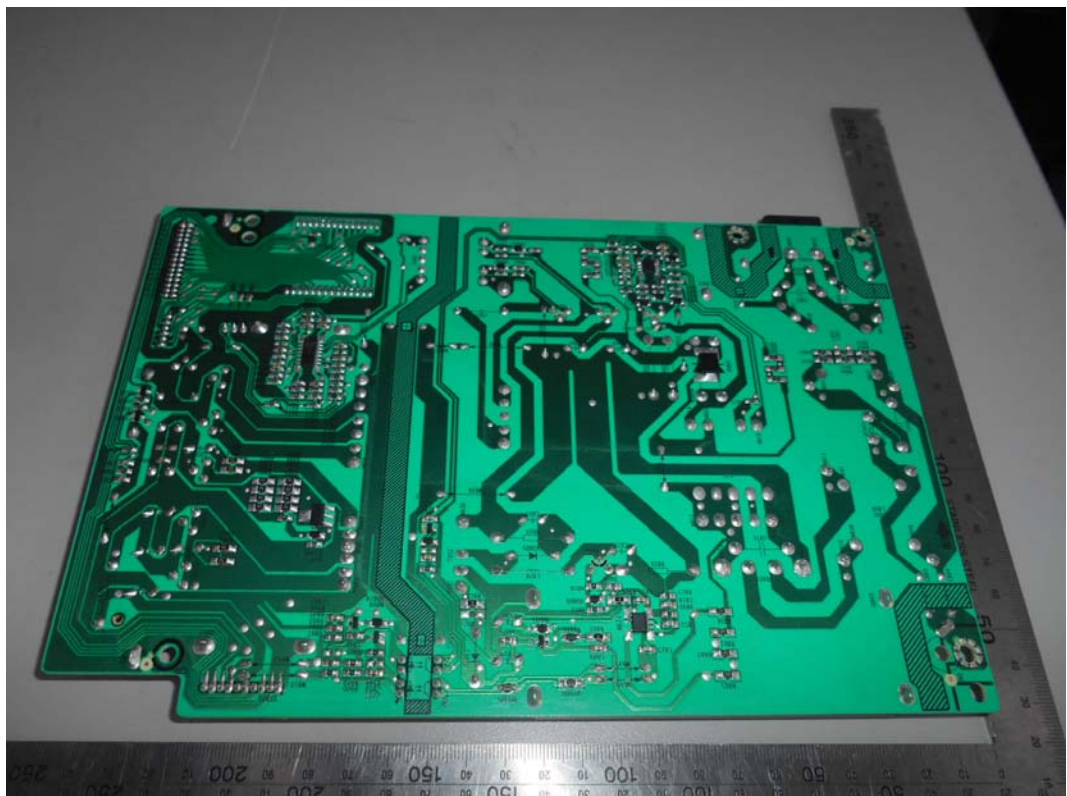


FIGURE 8
LED LCD TV (M/N: LC-50N8002U)
POWER BOARD#2 (COMPONENT SIDE)



FIGURE 9
LED LCD TV (M/N: LC-50N8002U)
POWER BOARD#2 (SOLDERED SIDE)

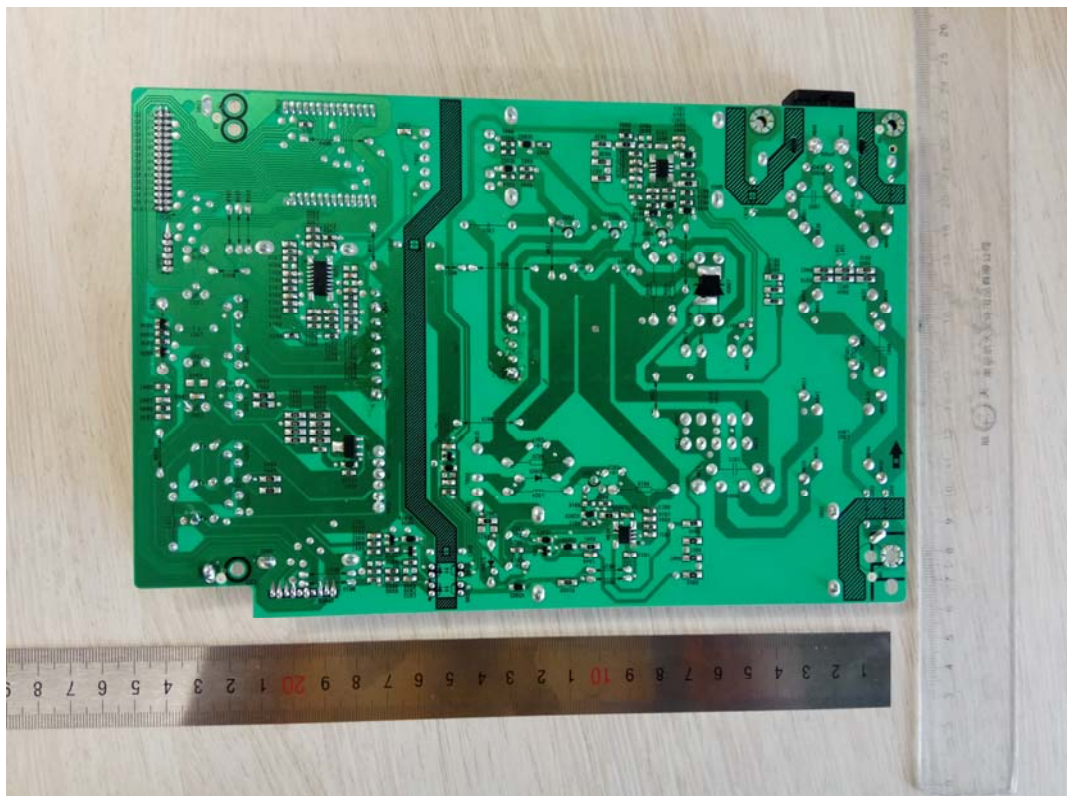


FIGURE 10
LED LCD TV (M/N: LC-50N8002U)
TUNER BOARD

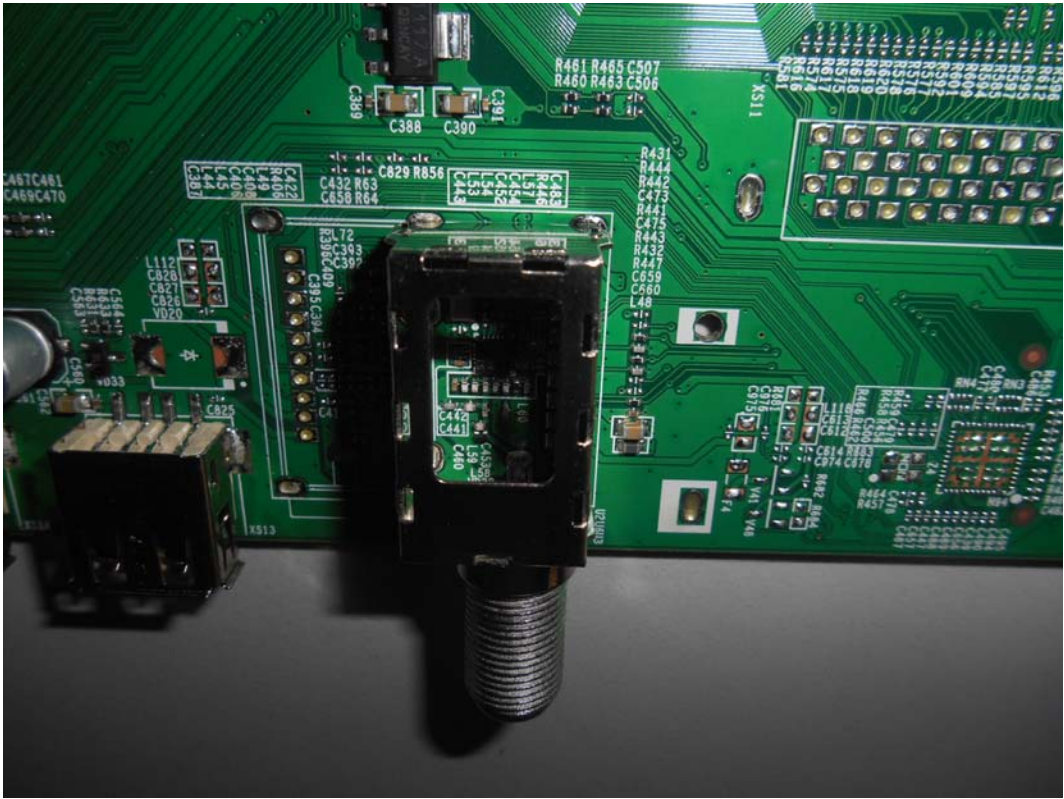


FIGURE 11
LED LCD TV (M/N: LC-50N8002U)
IR BOARD (COMPONENT SIDE)

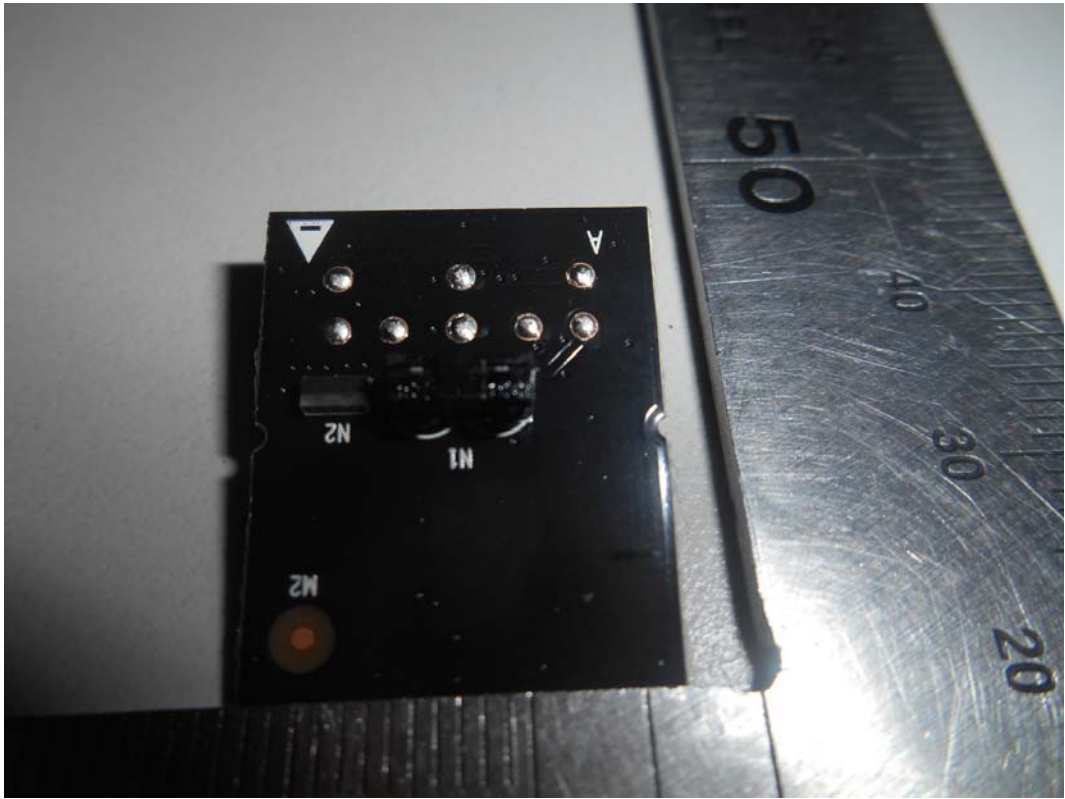


FIGURE 12
LED LCD TV (M/N: LC-50N8002U)
IR BOARD (SOLDERED SIDE)



FIGURE 13
LED LCD TV (M/N: LC-50N8002U)
RF BOARD (COMPONENT SIDE)

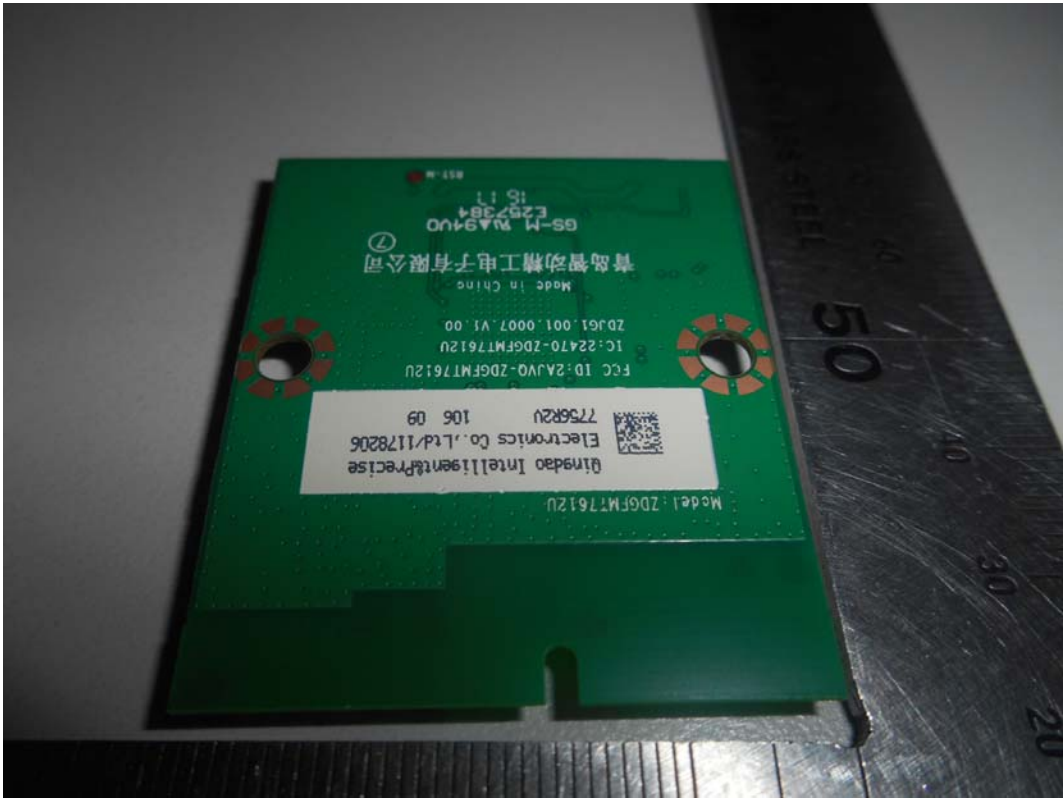


FIGURE 14
LED LCD TV (M/N: LC-50N8002U)
RF BOARD (SOLDERED SIDE)

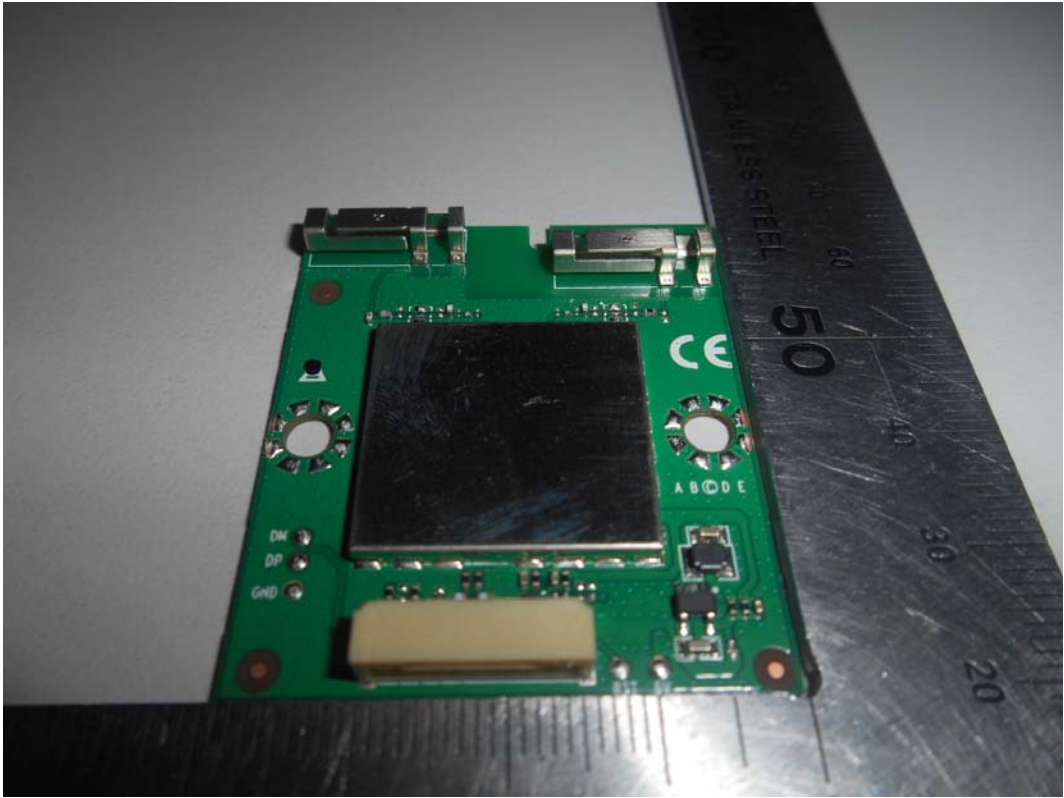


FIGURE 15
LED LCD TV (M/N: LC-50N8002U)
RF BOARD LABEL



FIGURE 16
LED LCD TV (M/N: LC-50N8002U)
RF BOARD COVER REMOVED



FIGURE 17
LED LCD TV (M/N: LC-50N8002U)
LCD PANEL BOARD (COMPONENT SIDE)



FIGURE 18
LED LCD TV (M/N: LC-50N8002U)
LCD PANEL BOARD (SOLDERED SIDE)

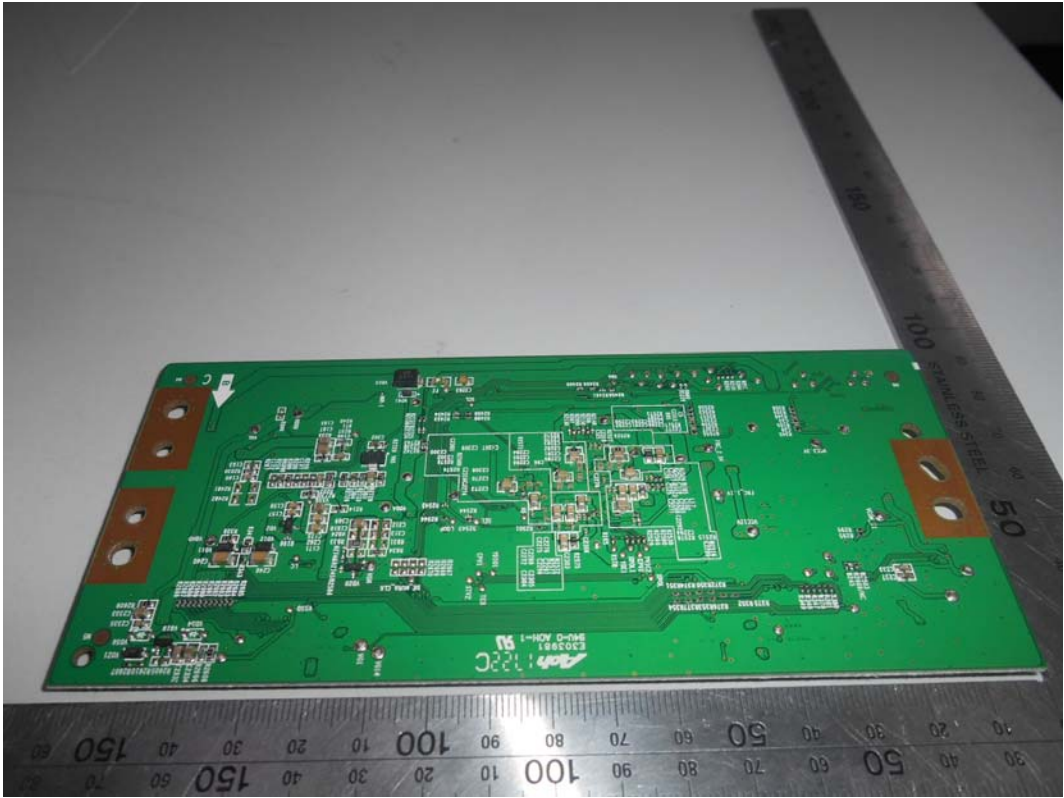


FIGURE 19
LED LCD TV (M/N: LC-50N8002U)
CHIP ON LCD PANEL BOARD

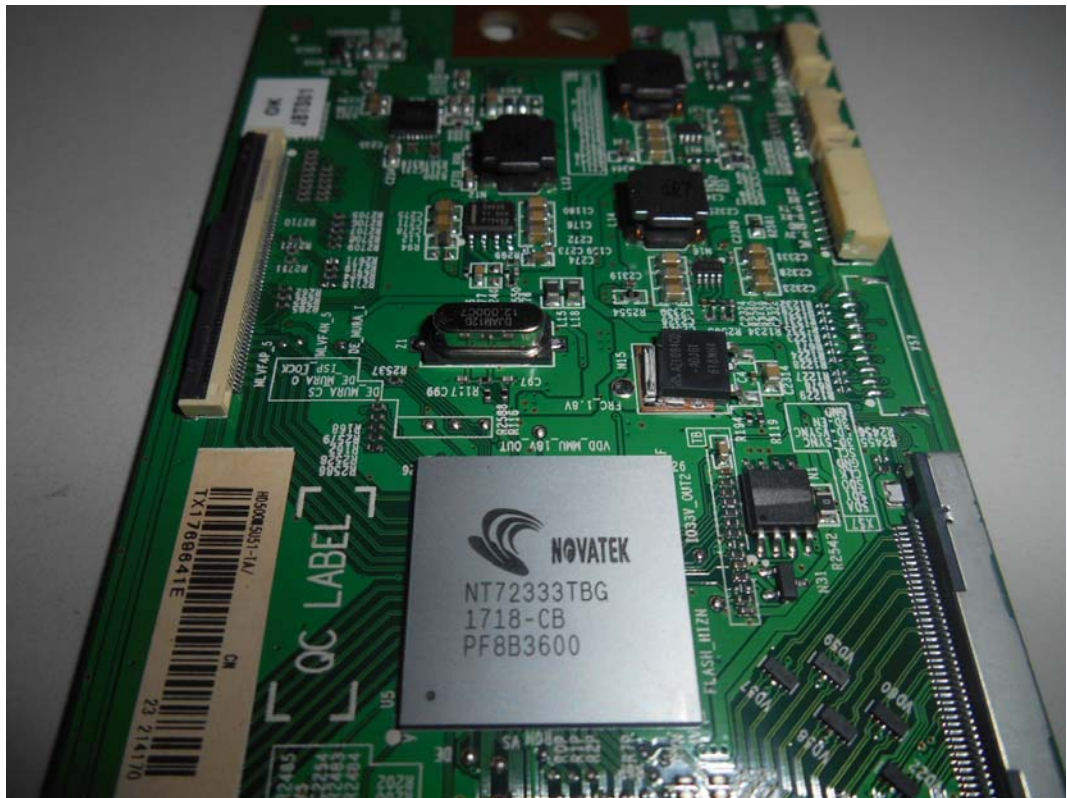


FIGURE 20
LED LCD TV (M/N: LC-50N8002U)
KEY BOARD (COMPONENT SIDE)

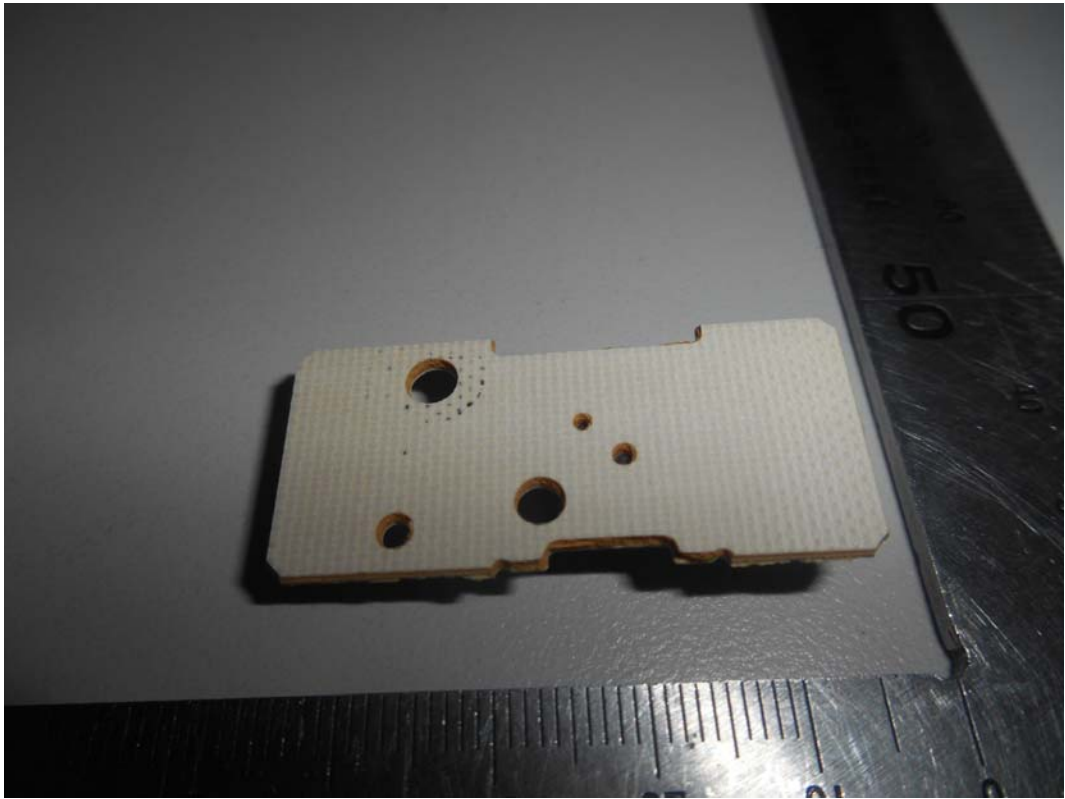


FIGURE 21
LED LCD TV (M/N: LC-50N8002U)
KEY BOARD (SOLDERED SIDE)

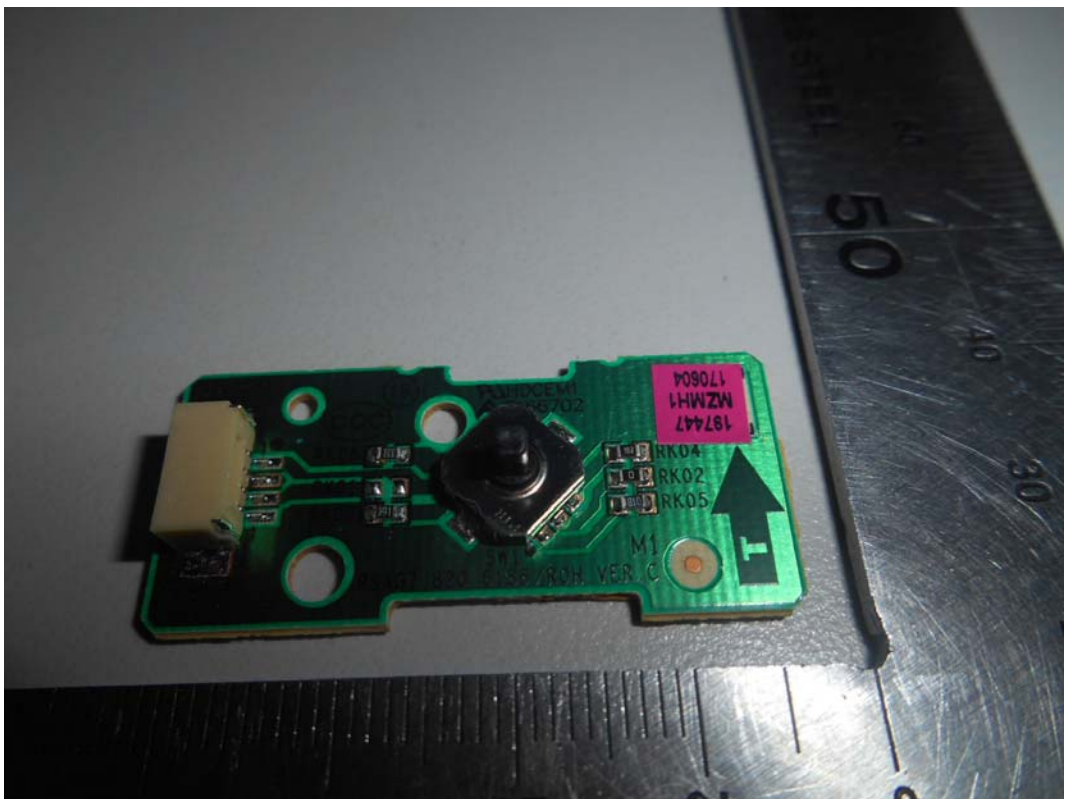


FIGURE 22
LED LCD TV (M/N: LC-50N802U)
DEBUG

