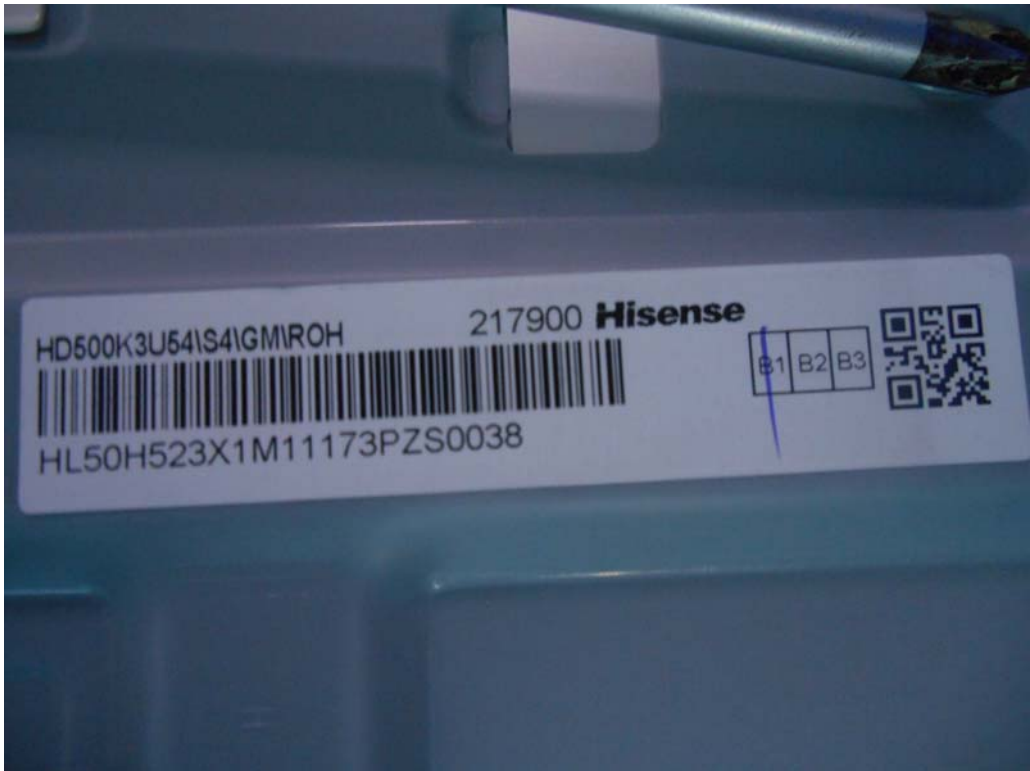


*FIGURE 1*  
*LED LCD TV (M/N: LC-50P7000U)*  
*COVER REMOVED*



*FIGURE 2*  
*LED LCD TV (M/N: LC-50P7000U)*  
*PANEL LABEL*



*FIGURE 3*  
*LED LCD TV (M/N: LC-50P7000U)*  
*MAIN BOARD (COMPONENT SIDE)*



*FIGURE 4*  
*LED LCD TV (M/N: LC-50P7000U)*  
*MAIN BOARD (SOLDERED SIDE)*

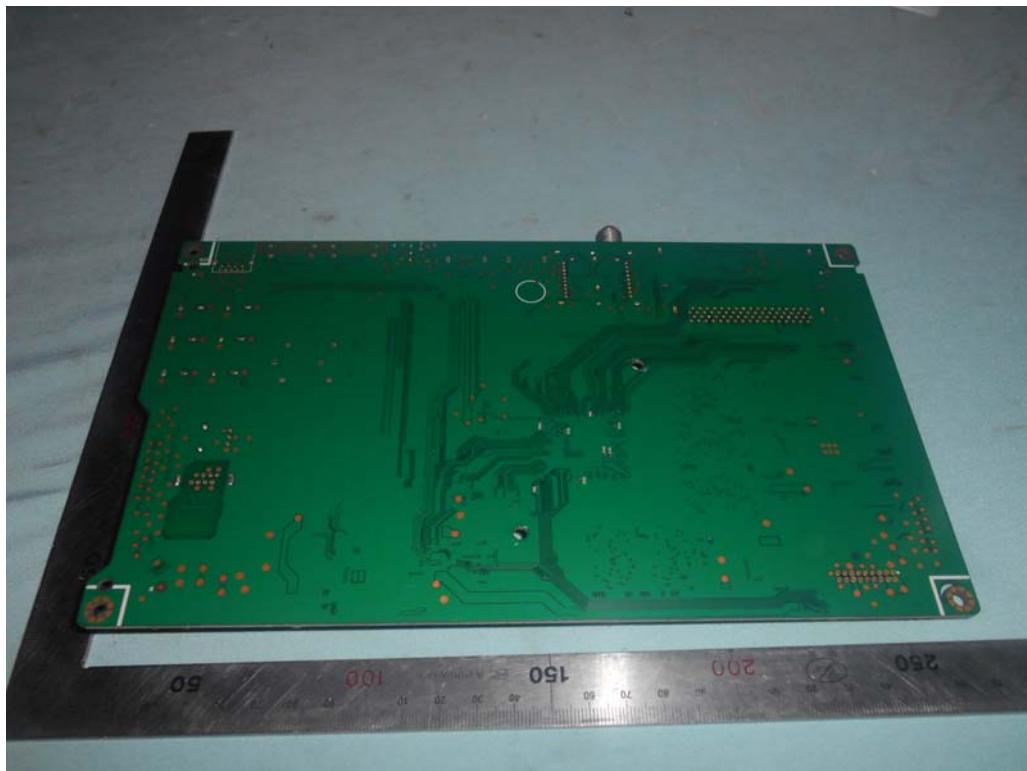
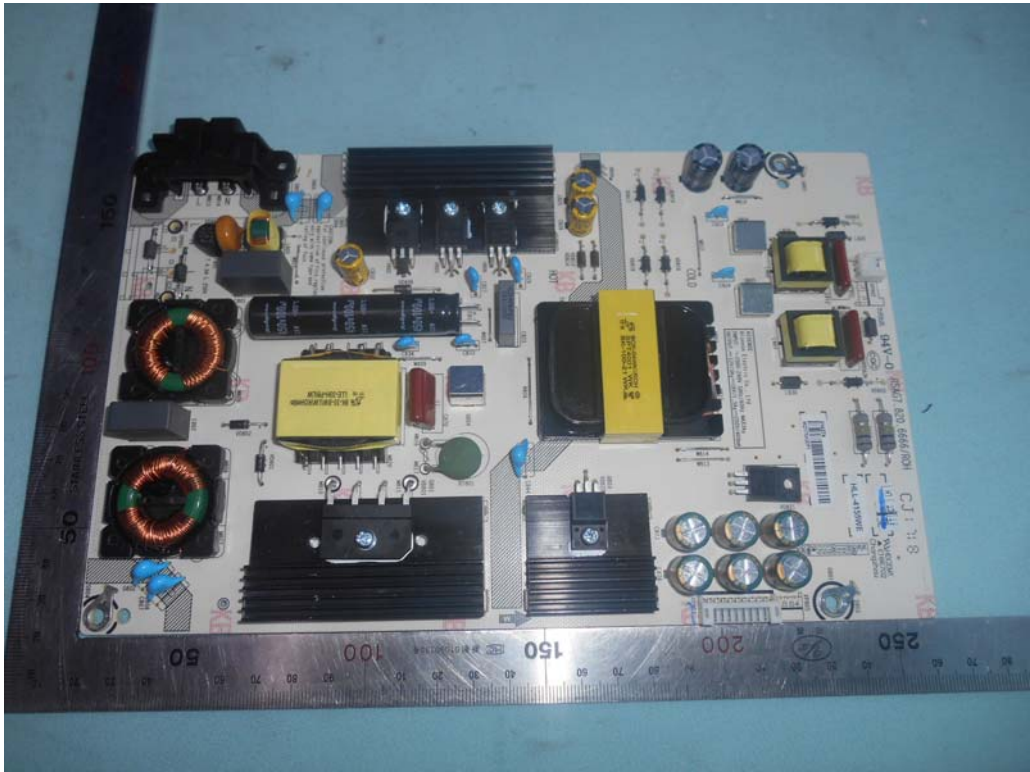


FIGURE 5  
LED LCD TV (M/N: LC-50P7000U)  
CHIP ON MAIN BOARD



*FIGURE 6*  
*LED LCD TV (M/N: LC-50P7000U)*  
*POWER BOARD (COMPONENT SIDE)*



*FIGURE 7*  
*LED LCD TV (M/N: LC-50P7000U)*  
*POWER BOARD (SOLDERED SIDE)*

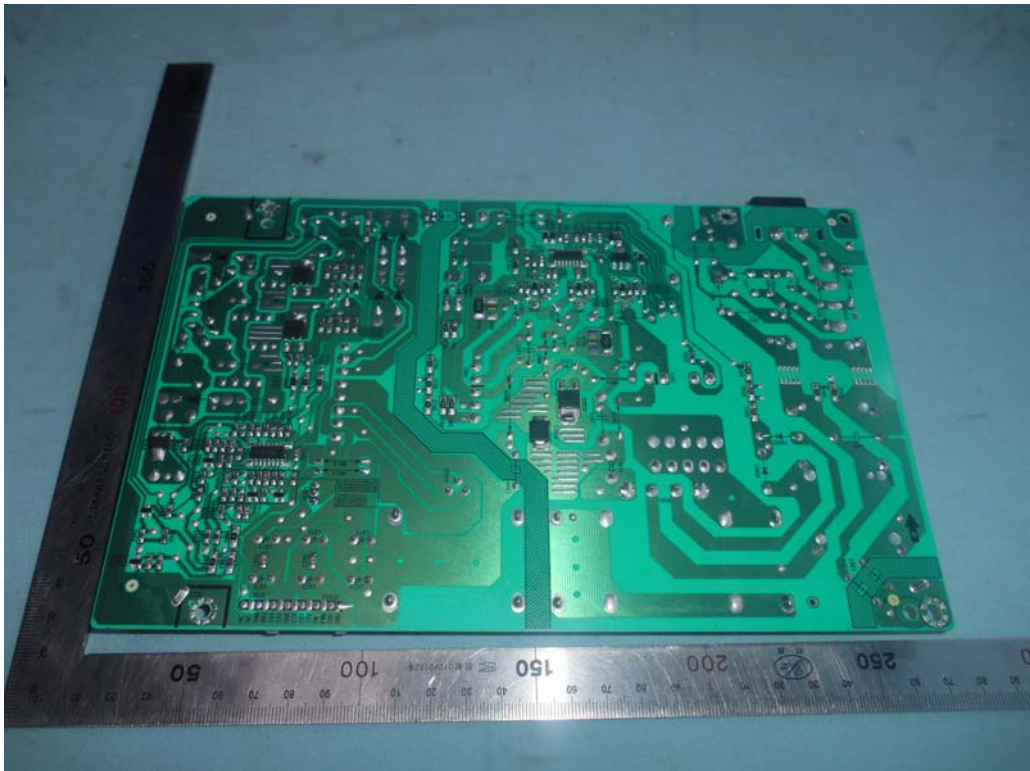




FIGURE 9  
LED LCD TV (M/N: LC-50P7000U)  
RF BOARD (COMPONENT SIDE)



FIGURE 10  
LED LCD TV (M/N: LC-50P7000U)  
RF BOARD (SOLDERED SIDE)



*FIGURE 11*  
*LED LCD TV (M/N: LC-50P7000U)*  
*RF BOARD COVER REMOVED*



*FIGURE 12*  
*LED LCD TV (M/N: LC-50P7000U)*  
*LCD PANEL BOARD (COMPONENT SIDE)*



*FIGURE 13*  
*LED LCD TV (M/N: LC-50P7000U)*  
*LCD PANEL BOARD (SOLDERED SIDE)*

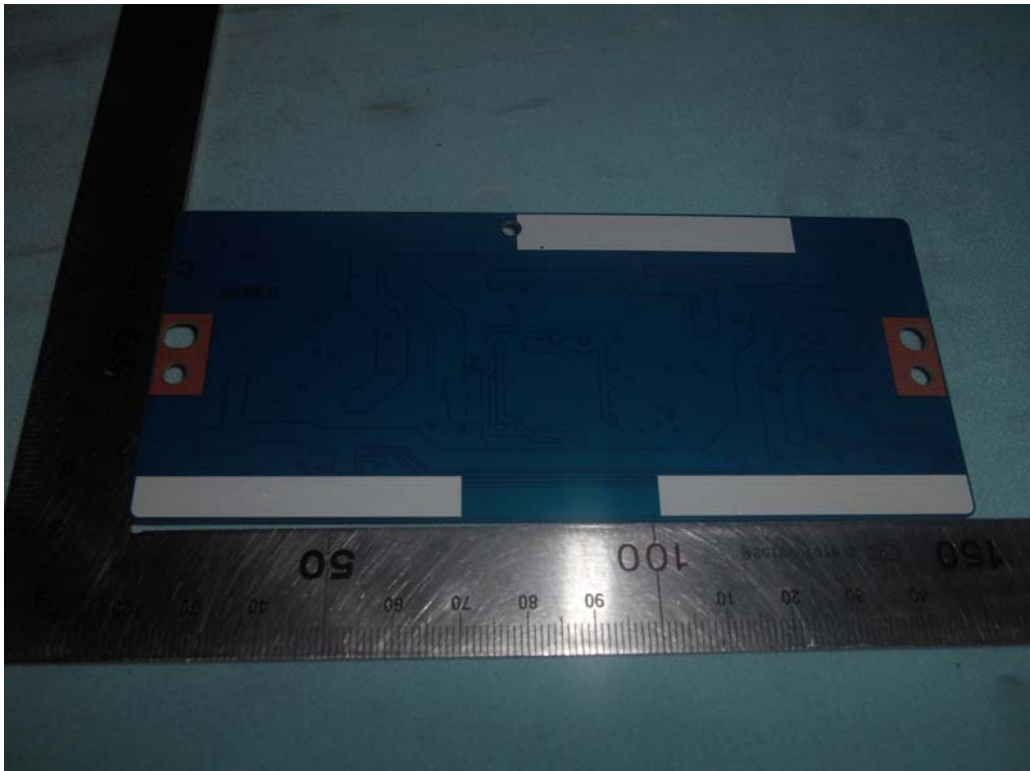






FIGURE 15  
LED LCD TV (M/N: LC-50P7000U)  
KEY BOARD (COMPONENT SIDE)

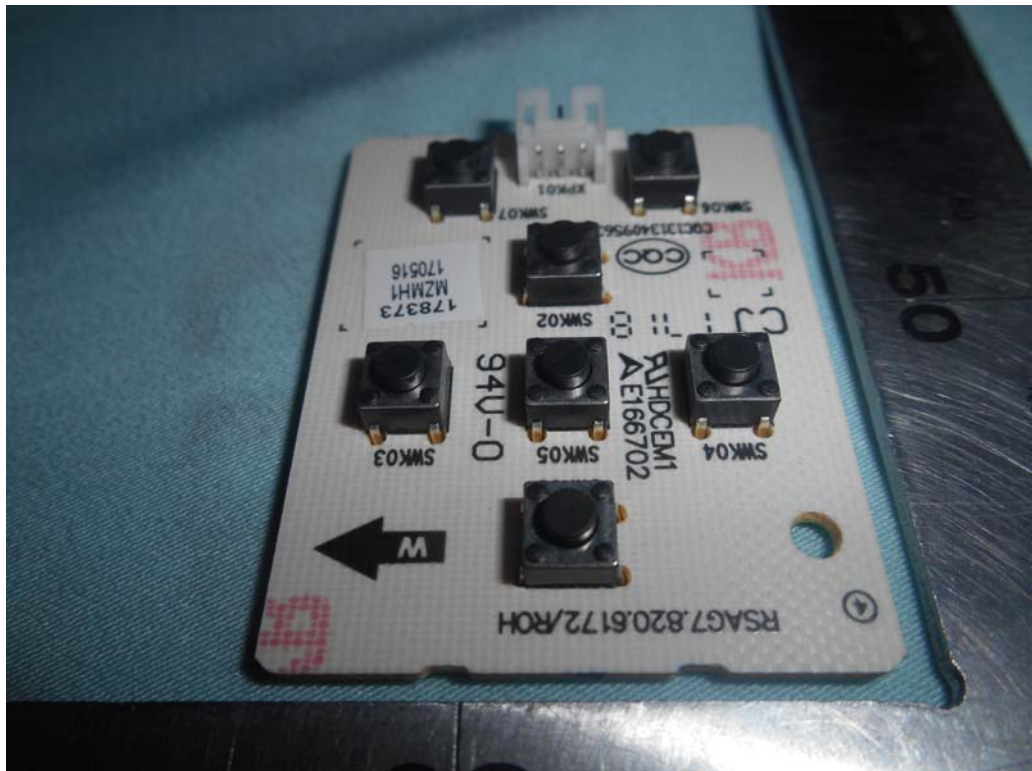


FIGURE 16  
LED LCD TV (M/N: LC-50P7000U)  
KEY BOARD (SOLDERED SIDE)

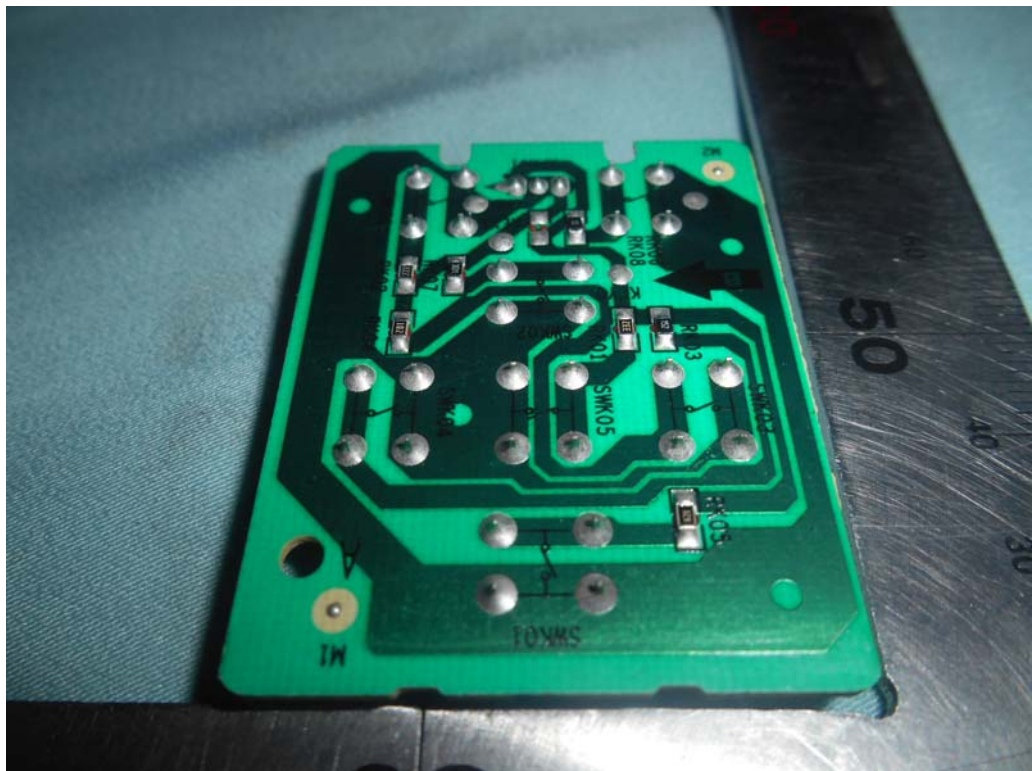


FIGURE 17  
LED LCD TV (M/N: LC-50P7000U)  
IR BOARD (COMPONENT SIDE)

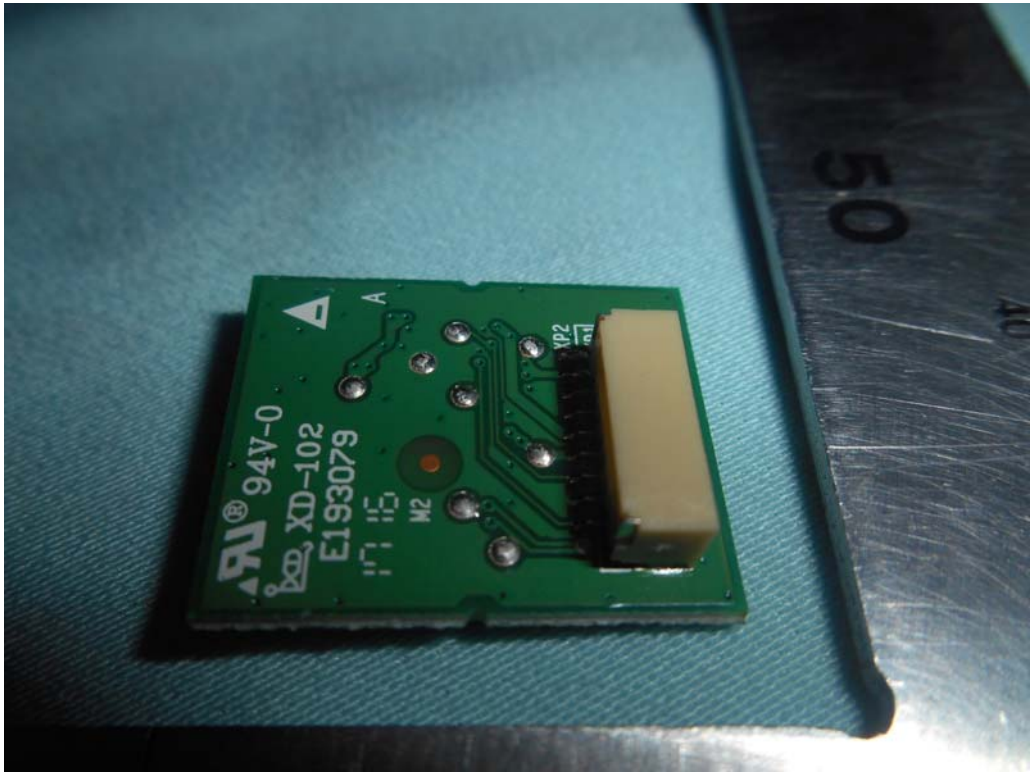


FIGURE 18  
LED LCD TV (M/N: LC-50P7000U)  
IR BOARD (SOLDERED SIDE)



FIGURE 19  
LED LCD TV (M/N: LC-50P7000U)  
DEBUG

