

FIGURE 1
LED LCD TV (M/N: 55H5307)
COVER REMOVED



FIGURE 2
LED LCD TV (M/N: 55H5307)
PANEL LABEL

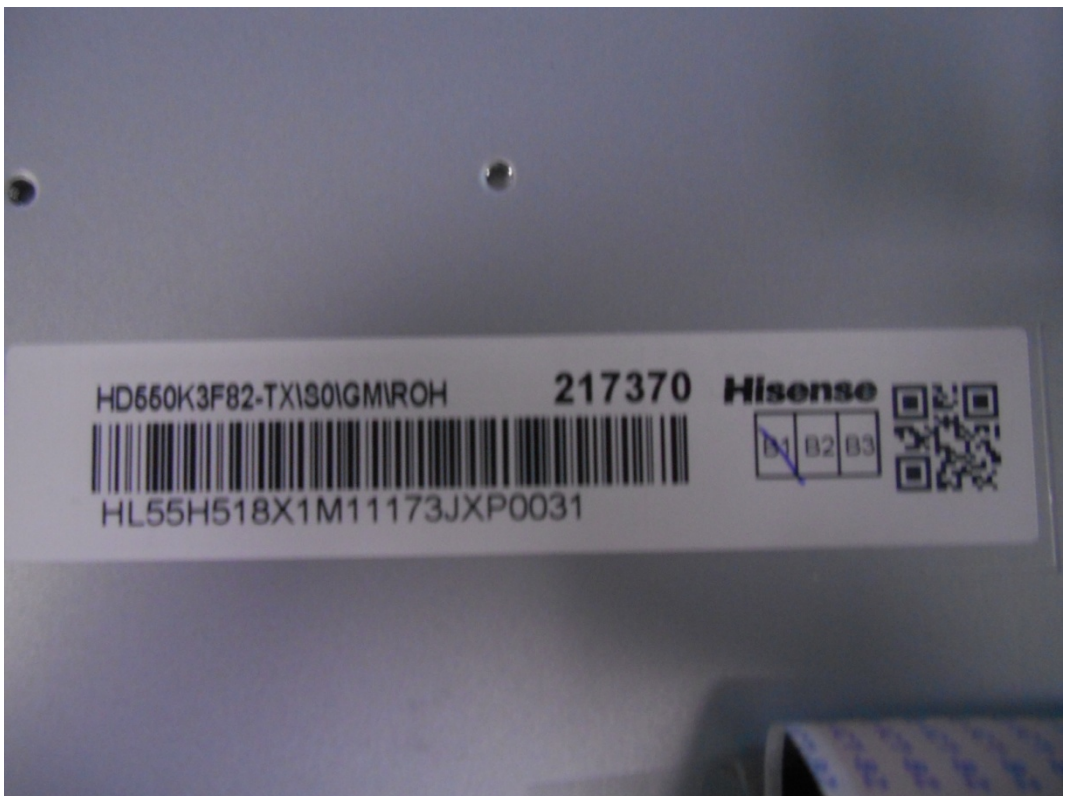


FIGURE 3
LED LCD TV (M/N: 55H5307)
MAIN BOARD (COMPONENT SIDE)

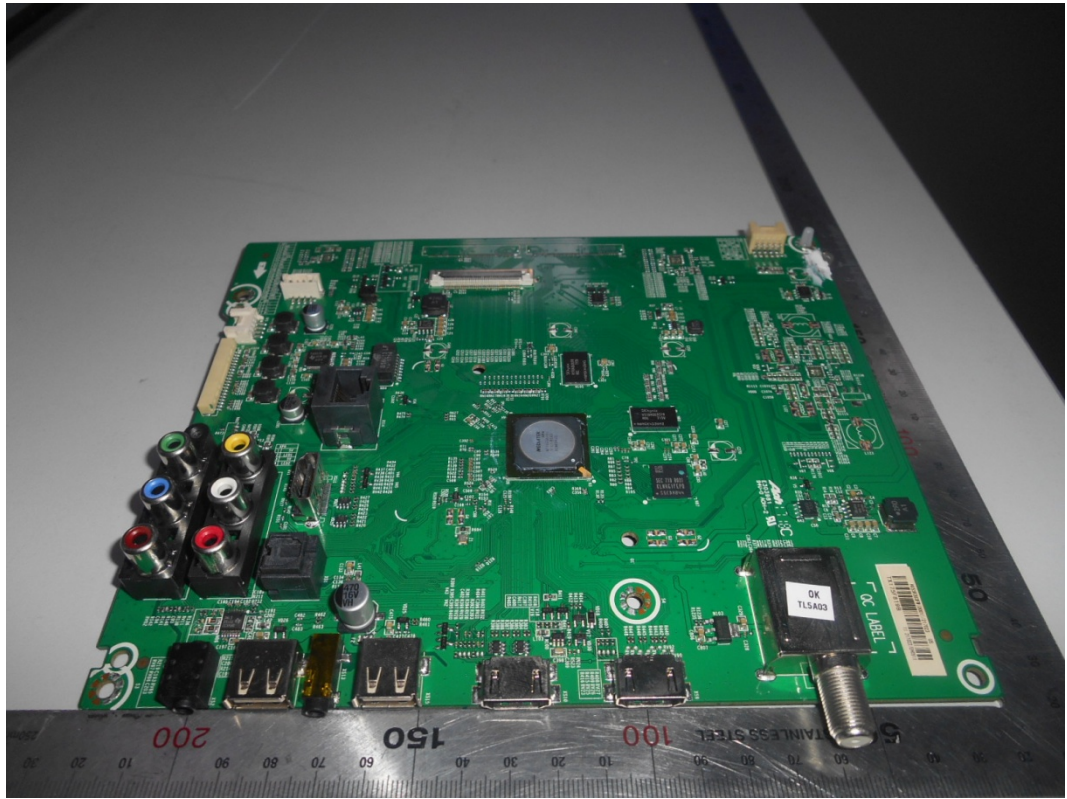


FIGURE 4
LED LCD TV (M/N: 55H5307)
MAIN BOARD (SOLDERED SIDE)

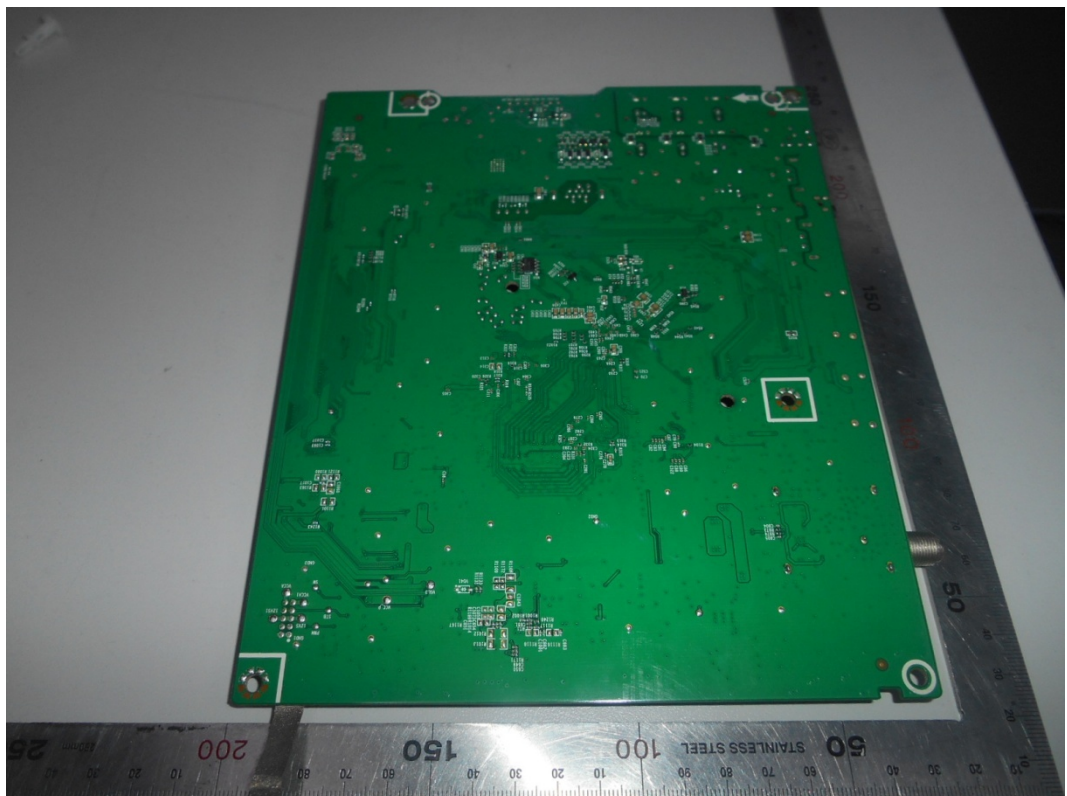


FIGURE 5
LED LCD TV (M/N: 55H5307)
CRYSTAL AND CHIP ON MAIN BOARD



FIGURE 6
LED LCD TV (M/N: 55H5307)
POWER BOARD (COMPONENT SIDE)

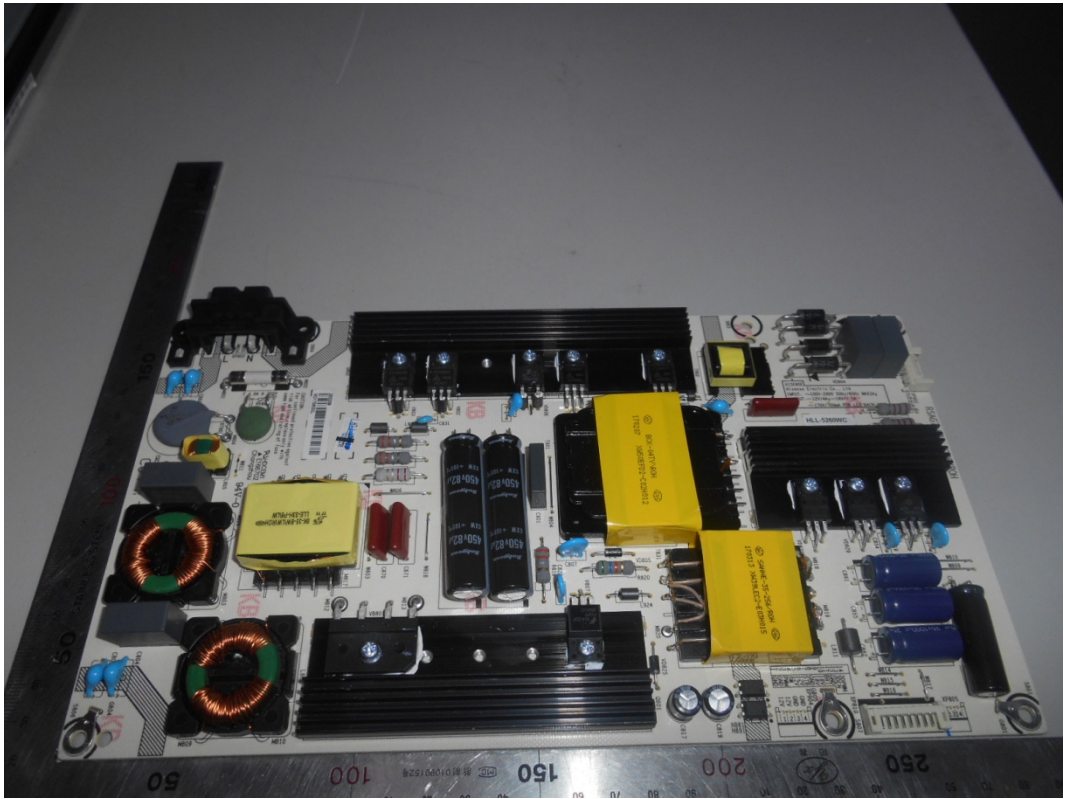


FIGURE 7
LED LCD TV (M/N: 55H5307)
POWER BOARD (SOLDERED SIDE)

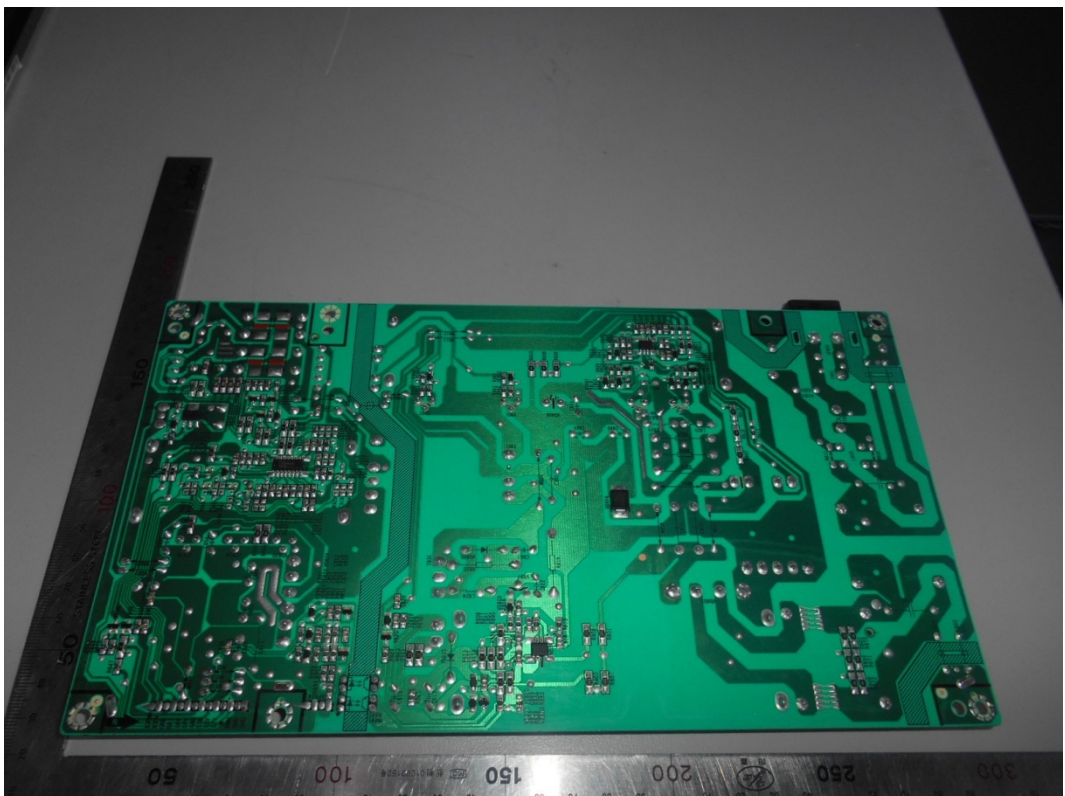


FIGURE 9
LED LCD TV (M/N: 55H5307)
IR BOARD (COMPONENT SIDE)



FIGURE 10
LED LCD TV (M/N: 55H5307)
IR BOARD (SOLDERED SIDE)

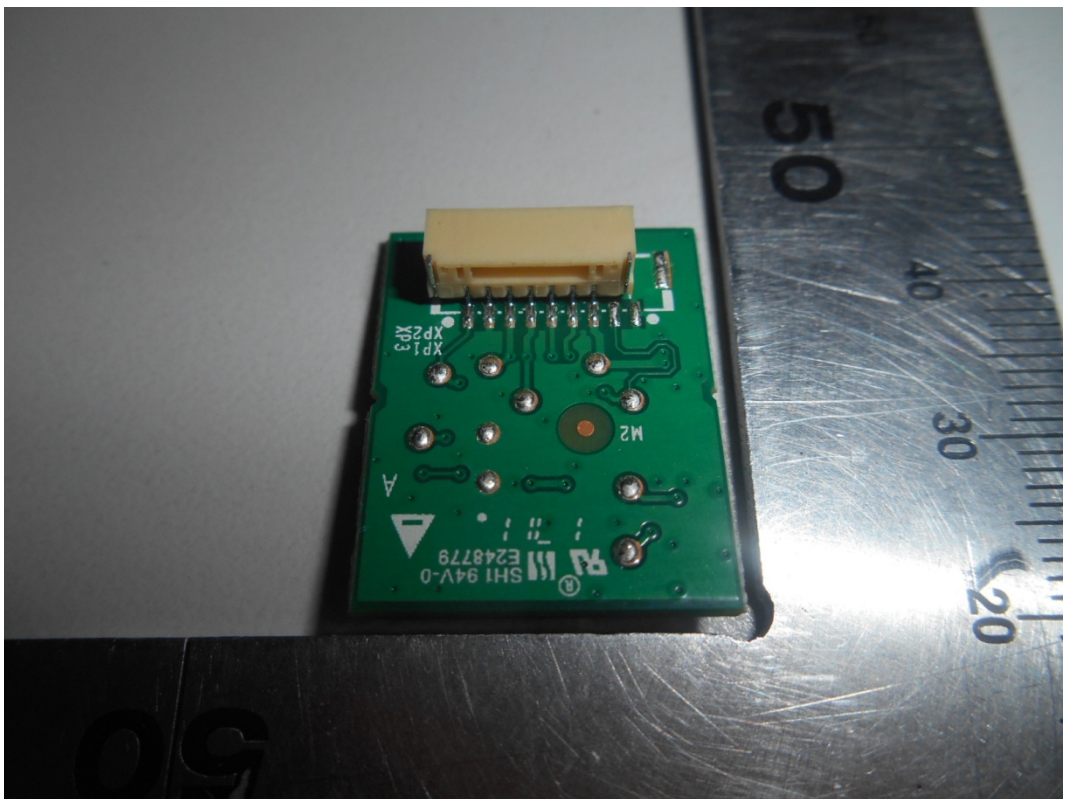


FIGURE 11
LED LCD TV (M/N: 55H5307)
RF BOARD (COMPONENT SIDE)



FIGURE 12
LED LCD TV (M/N: 55H5307)
RF BOARD (SOLDERED SIDE)



FIGURE 13
LED LCD TV (M/N: 55H5307)
RF BOARD LABEL

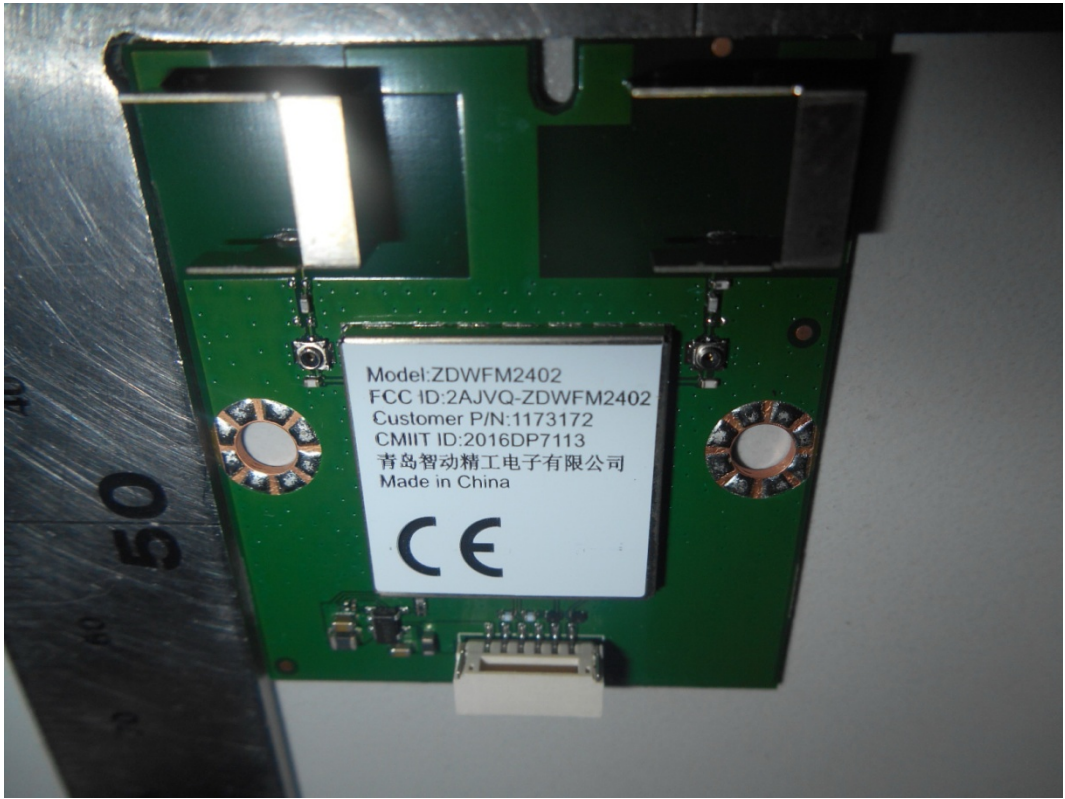


FIGURE 14
LED LCD TV (M/N: 55H5307)
RF BOARD COVER REMOVED

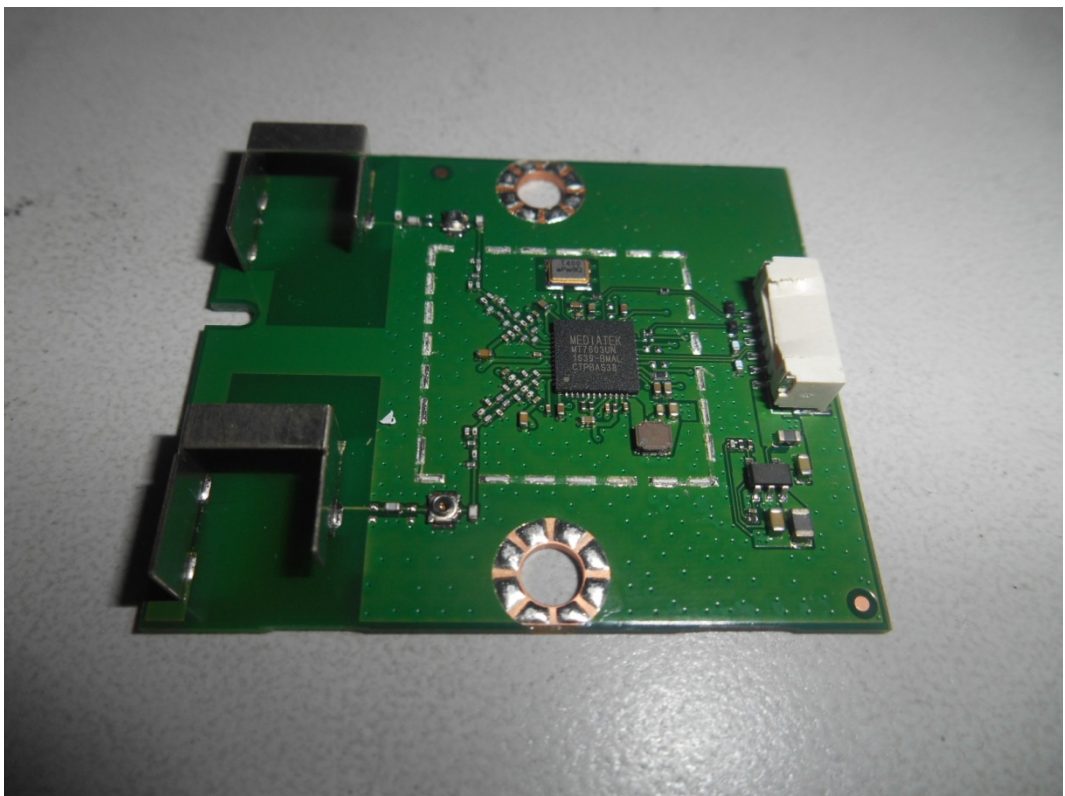


FIGURE 15
LED LCD TV (M/N: 55H5307)
KEY BOARD (COMPONENT SIDE)

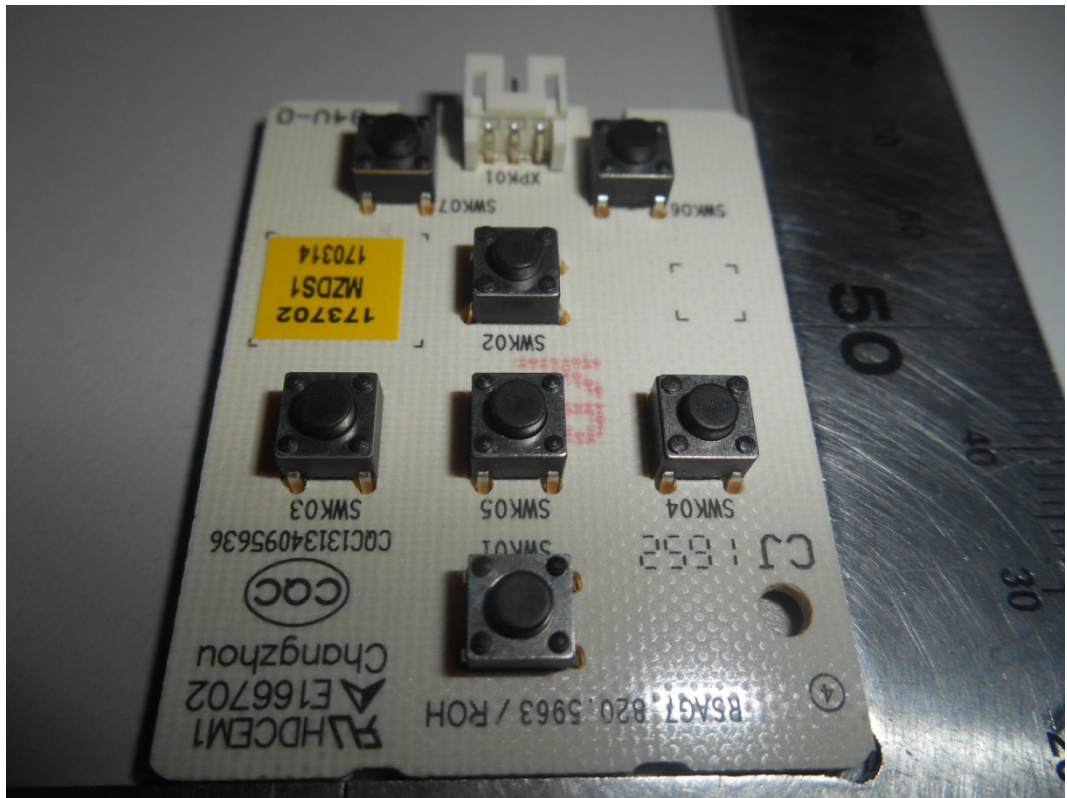


FIGURE 16
LED LCD TV (M/N: 55H5307)
KEY BOARD (SOLDERED SIDE)

