

FIGURE 1
LED LCD TV (M/N: 55DU6500)
COVER REMOVED



FIGURE 2
LED LCD TV (M/N: 55DU6500)
PANEL LABEL



FIGURE 3
LED LCD TV (M/N: 55DU6500)
MAIN BOARD (COMPONENT SIDE)



FIGURE 4
LED LCD TV (M/N: 55DU6500)
MAIN BOARD (SOLDERED SIDE)

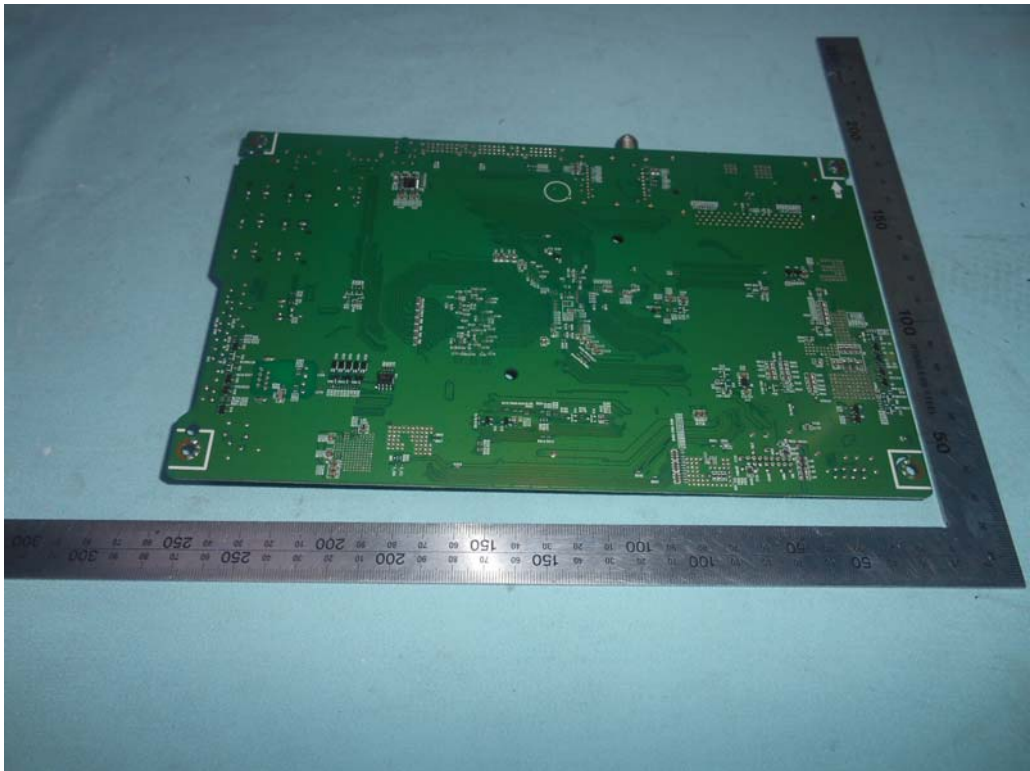


FIGURE 5
LED LCD TV (M/N: 55DU6500)
CHIP ON MAIN BOARD



FIGURE 6
LED LCD TV (M/N: 55DU6500)
POWER BOARD (COMPONENT SIDE)

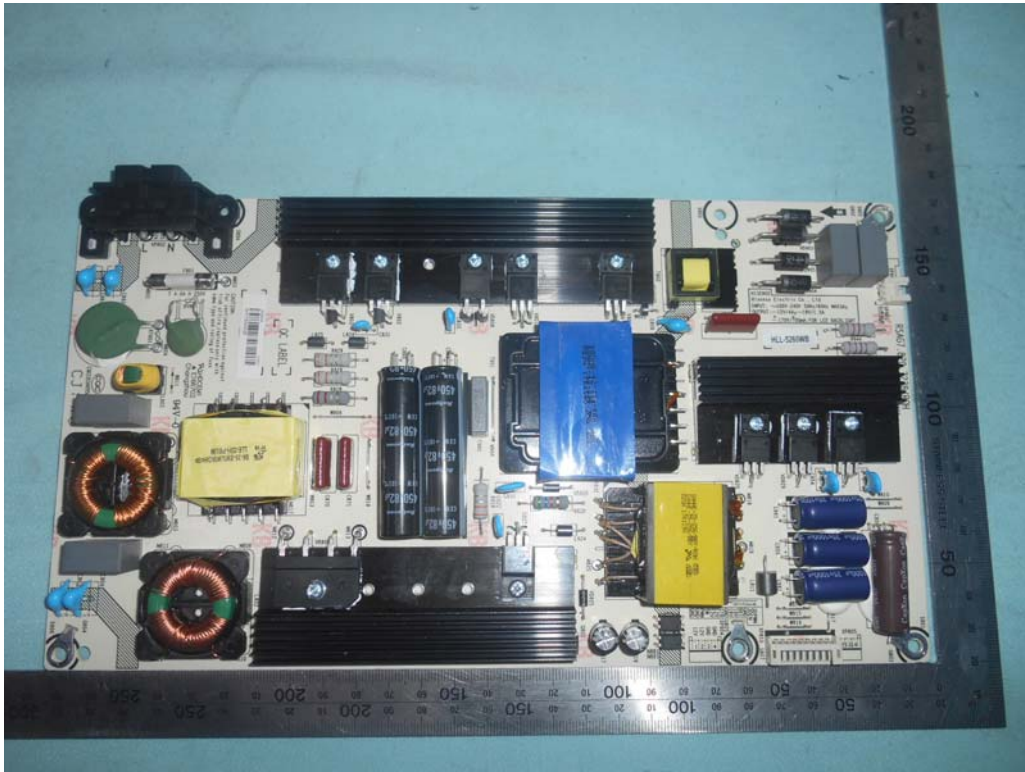


FIGURE 7
LED LCD TV (M/N: 55DU6500)
POWER BOARD (SOLDERED SIDE)

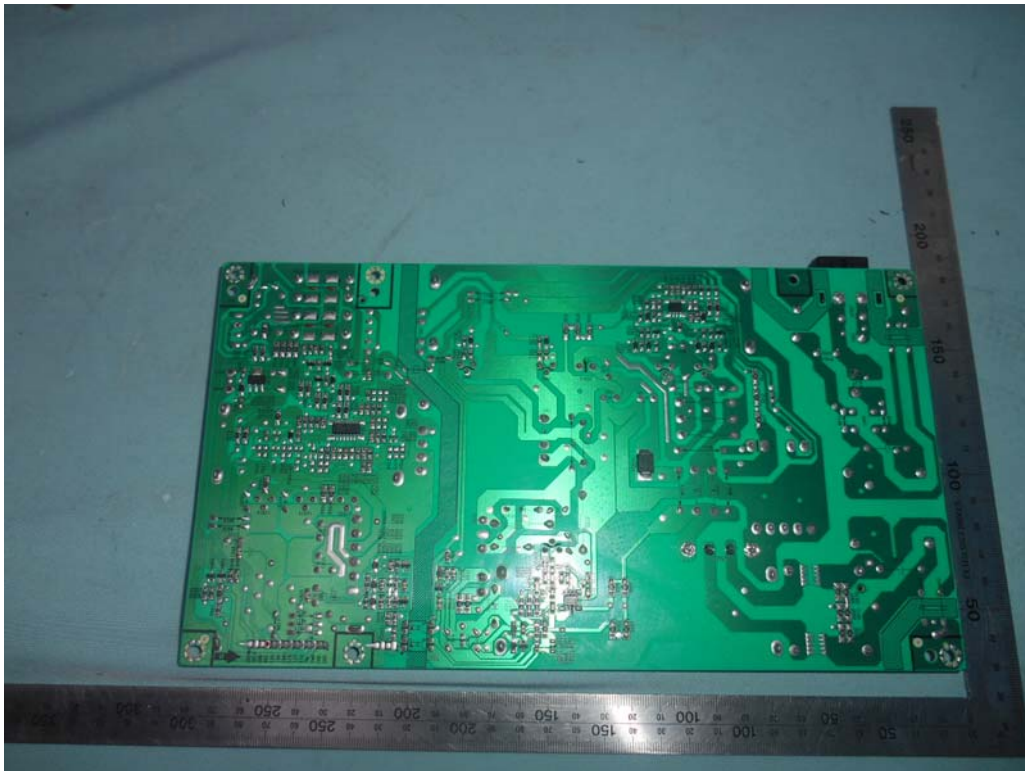


FIGURE 8
LED LCD TV (M/N: 55DU6500)
TUNER BOARD

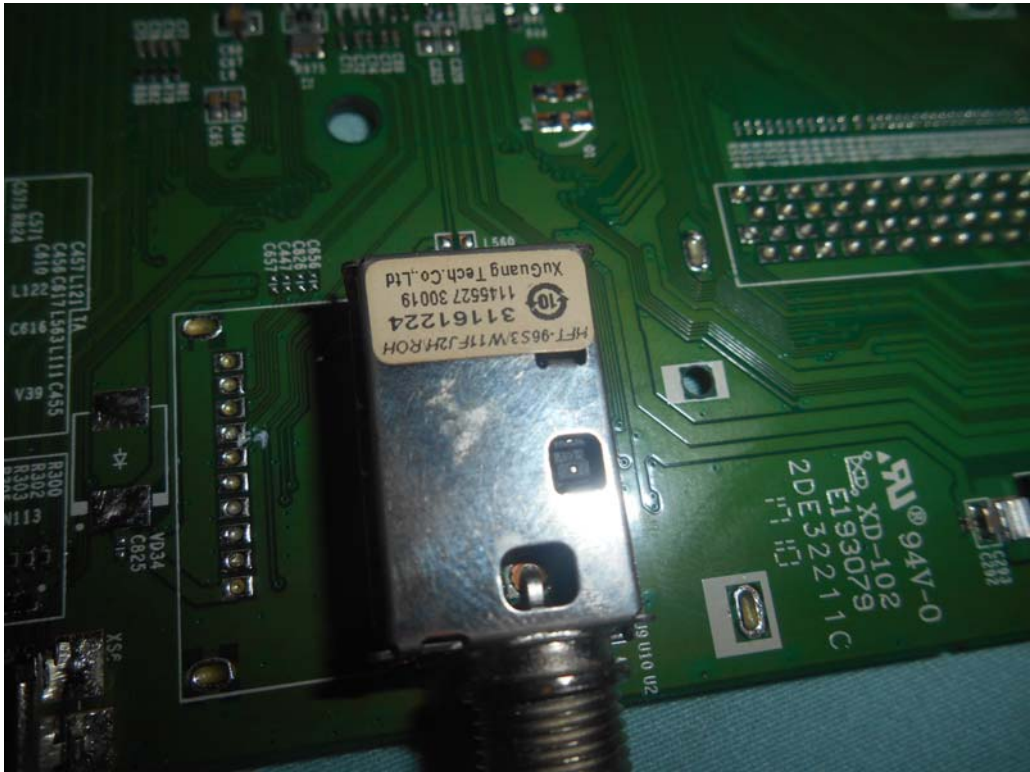


FIGURE 9
LED LCD TV (M/N: 55DU6500)
TUNER BOARD (COMPONENT SIDE)

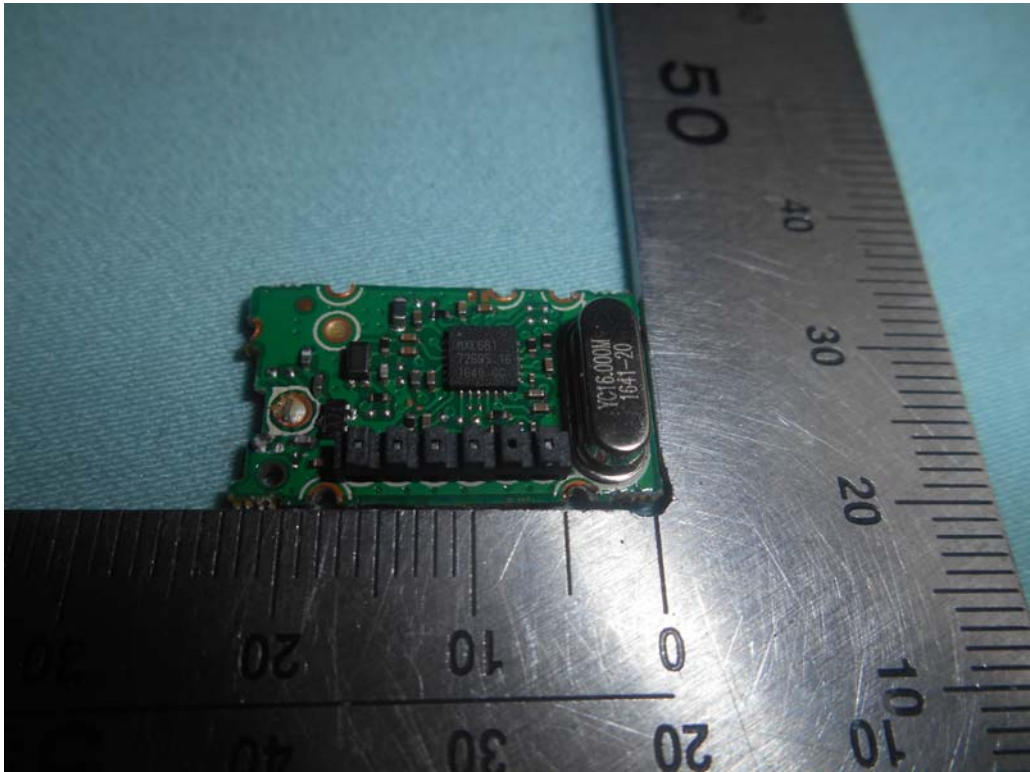


FIGURE 10
LED LCD TV (M/N: 55DU6500)
TUNER BOARD (SOLDERED SIDE)

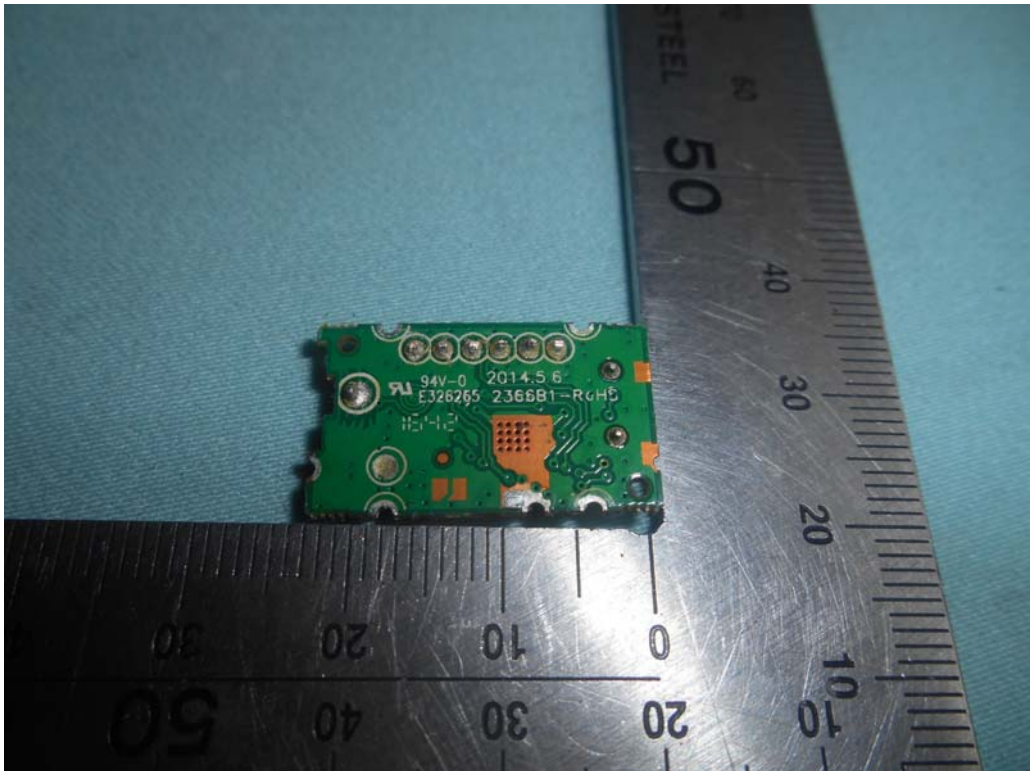


FIGURE 11
LED LCD TV (M/N: 55DU6500)
RF BOARD (COMPONENT SIDE)



FIGURE 12
LED LCD TV (M/N: 55DU6500)
RF BOARD (SOLDERED SIDE)



FIGURE 13
LED LCD TV (M/N: 55DU6500)
RF BOARD LABEL



FIGURE 14
LED LCD TV (M/N: 55DU6500)
RF BOARD COVER REMOVED



FIGURE 15
LED LCD TV (M/N: 55DU6500)
LCD PANEL BOARD (COMPONENT SIDE)



FIGURE 16
LED LCD TV (M/N: 55DU6500)
LCD PANEL BOARD (SOLDERED SIDE)

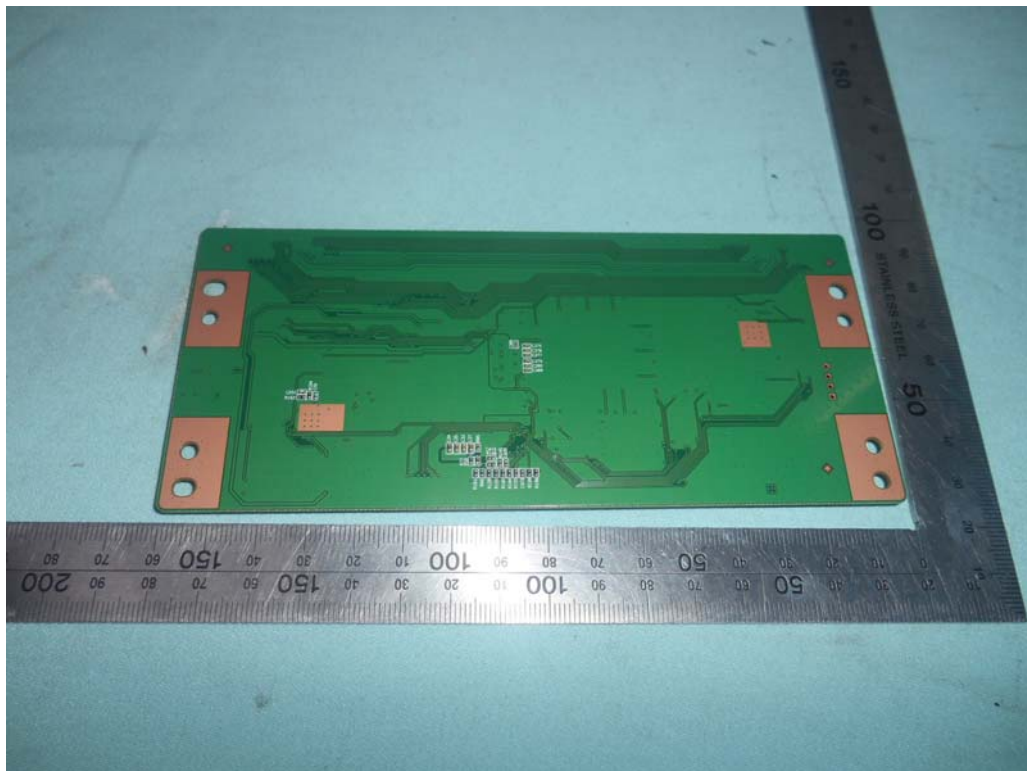


FIGURE 17
LED LCD TV (M/N: 55DU6500)
CHIP ON LCD PANEL BOARD



FIGURE 20
LED LCD TV (M/N: 55DU6500)
IR BOARD (COMPONENT SIDE)

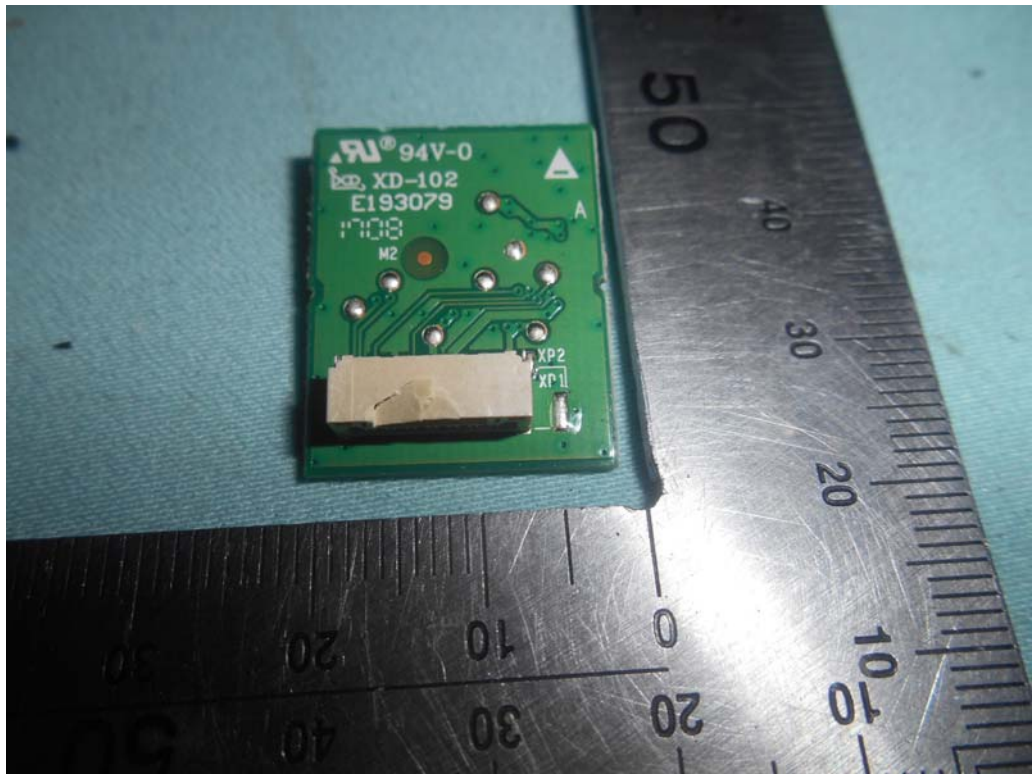


FIGURE 21
LED LCD TV (M/N: 55DU6500)
IR BOARD (SOLDERED SIDE)

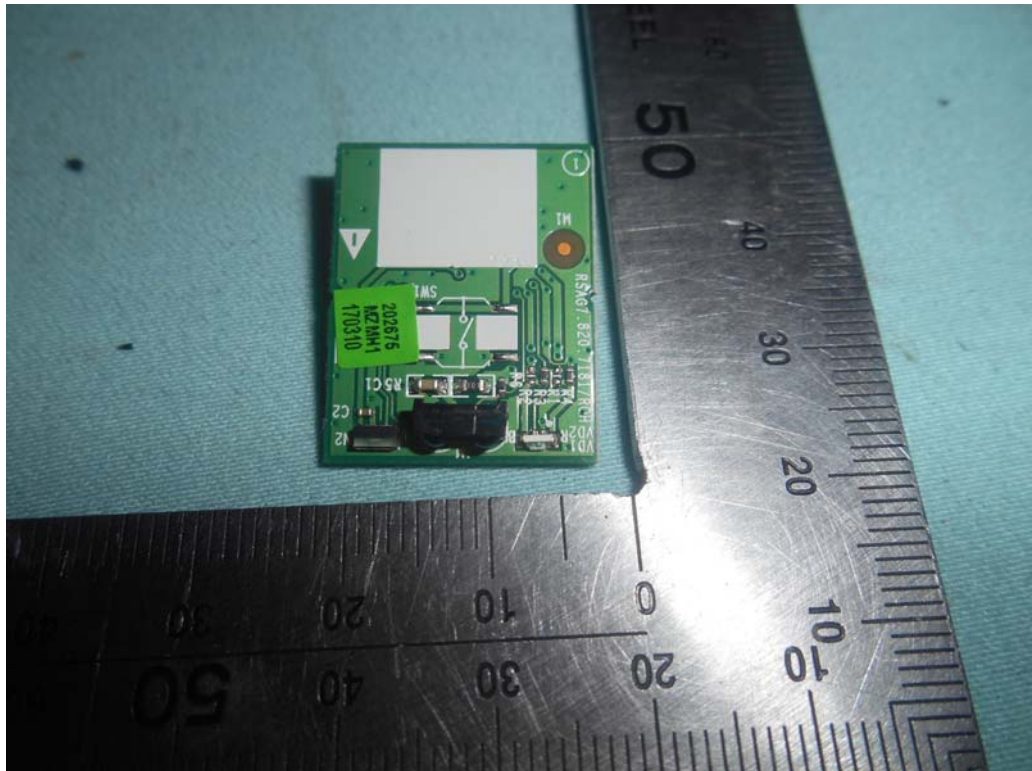


FIGURE 22
LED LCD TV (M/N: 55DU6500)
DEBUG

