

*FIGURE 1*  
*LED LCD TV (M/N: 55P62)*  
*COVER REMOVED*



*FIGURE 2*  
*LED LCD TV (M/N: 55P62)*  
*PANEL LABEL*



*FIGURE 3*  
*LED LCD TV (M/N: 55P62)*  
*MAIN BOARD (COMPONENT SIDE)*



*FIGURE 4*  
*LED LCD TV (M/N: 55P62)*  
*MAIN BOARD (SOLDERED SIDE)*

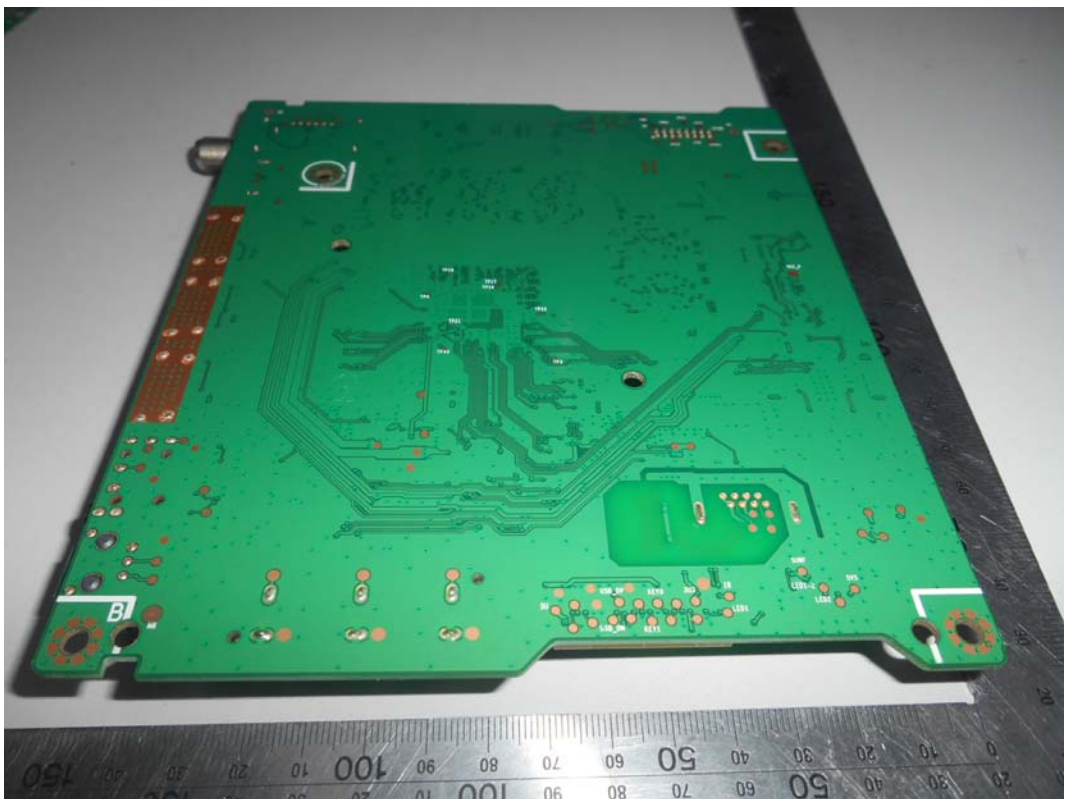
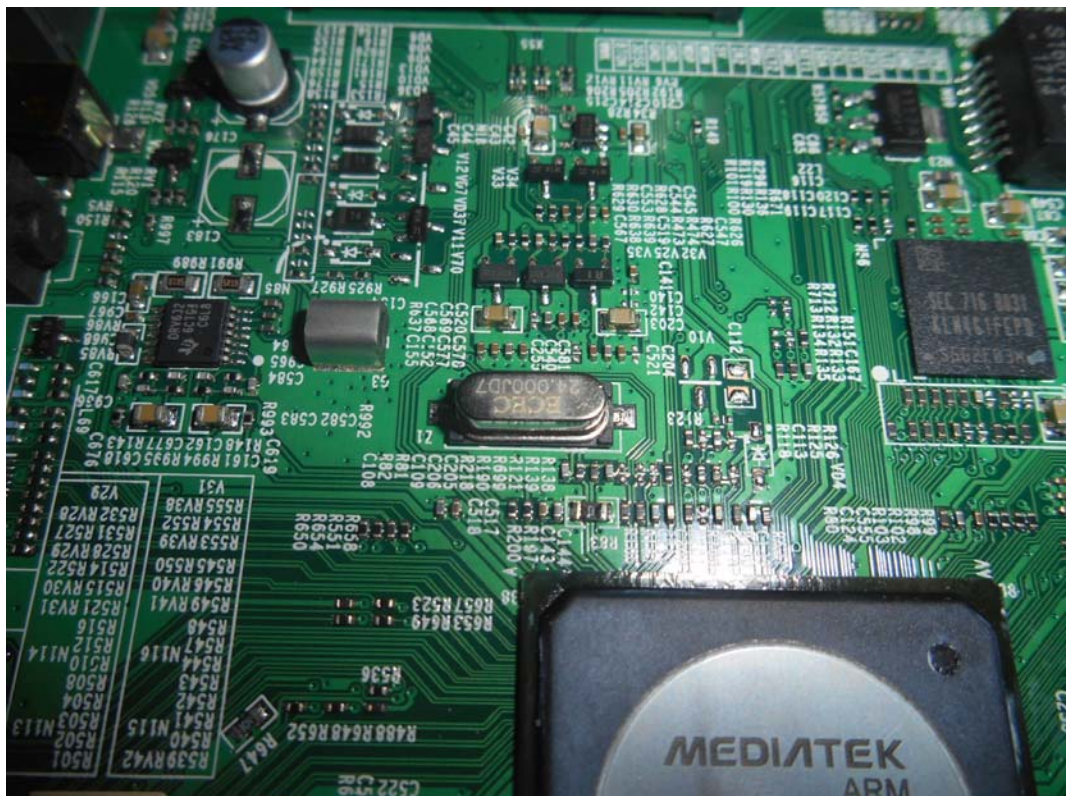


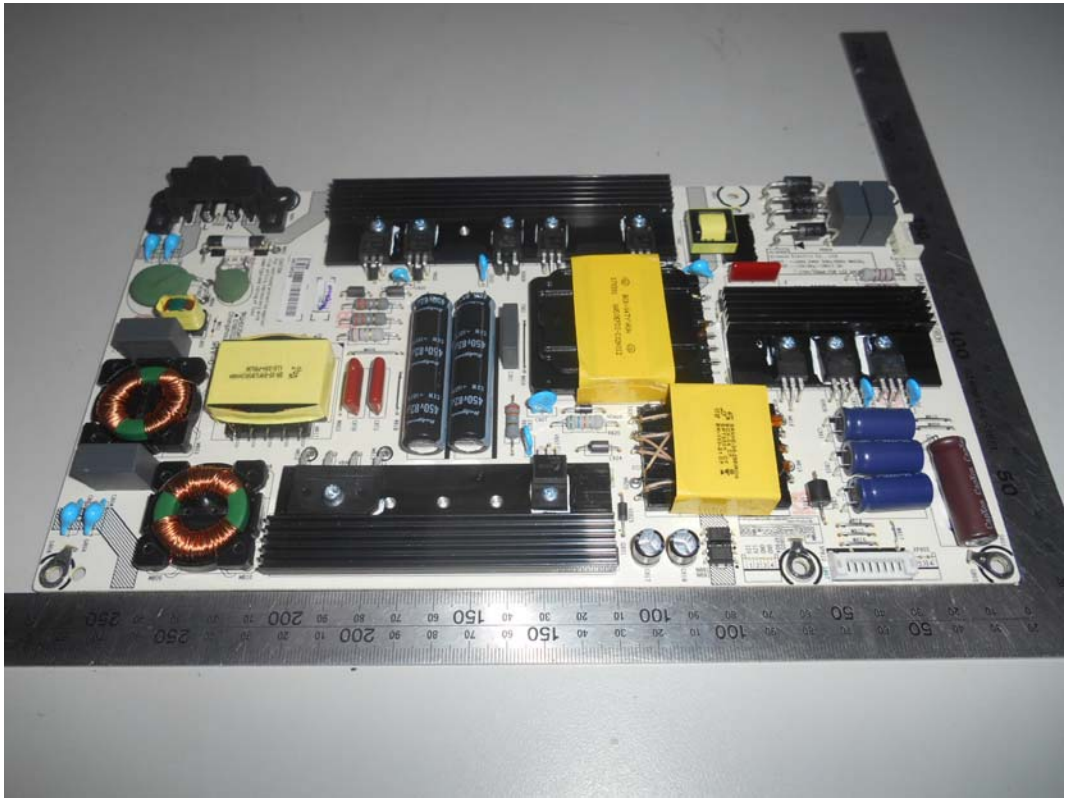
FIGURE 5  
LED LCD TV (M/N: 55P62)  
CHIP ON MAIN BOARD



FIGURE 6  
LED LCD TV (M/N: 55P62)  
CRYSTAL ON MAIN BOARD



*FIGURE 7  
LED LCD TV (M/N: 55P62)  
POWER BOARD (COMPONENT SIDE)*



*FIGURE 8  
LED LCD TV (M/N: 55P62)  
POWER BOARD (SOLDERED SIDE)*

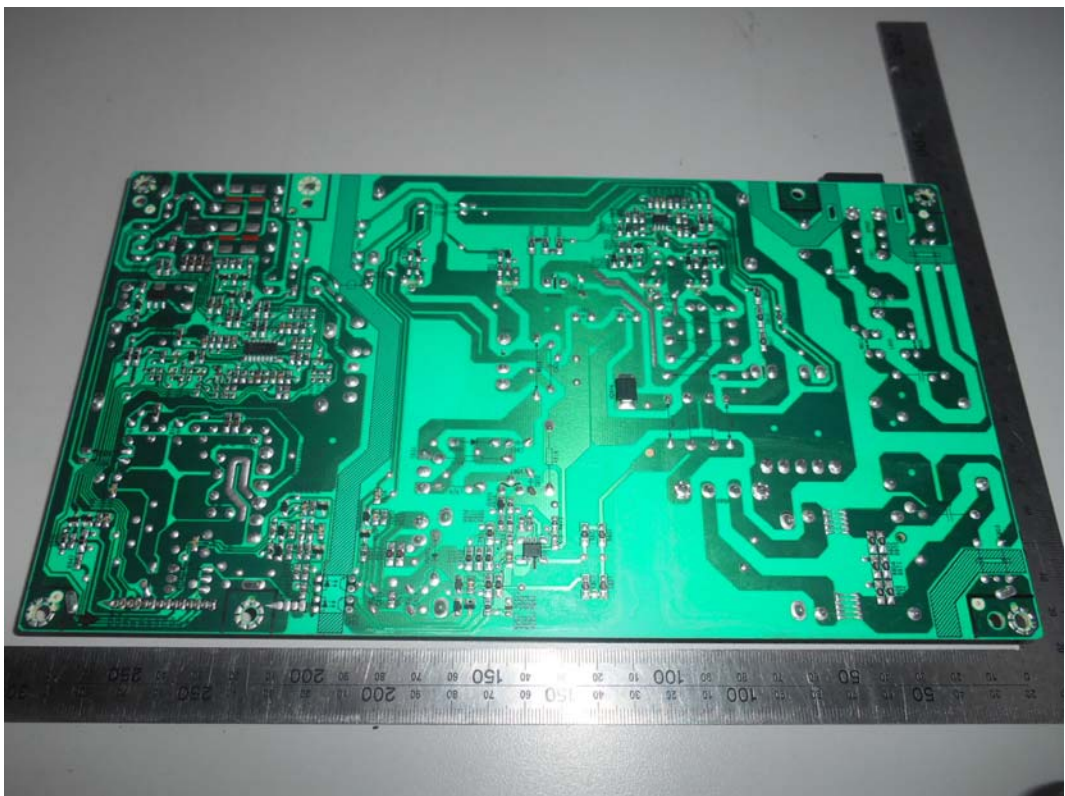


FIGURE 9  
LED LCD TV (M/N: 55P62)  
TUNER BOARD

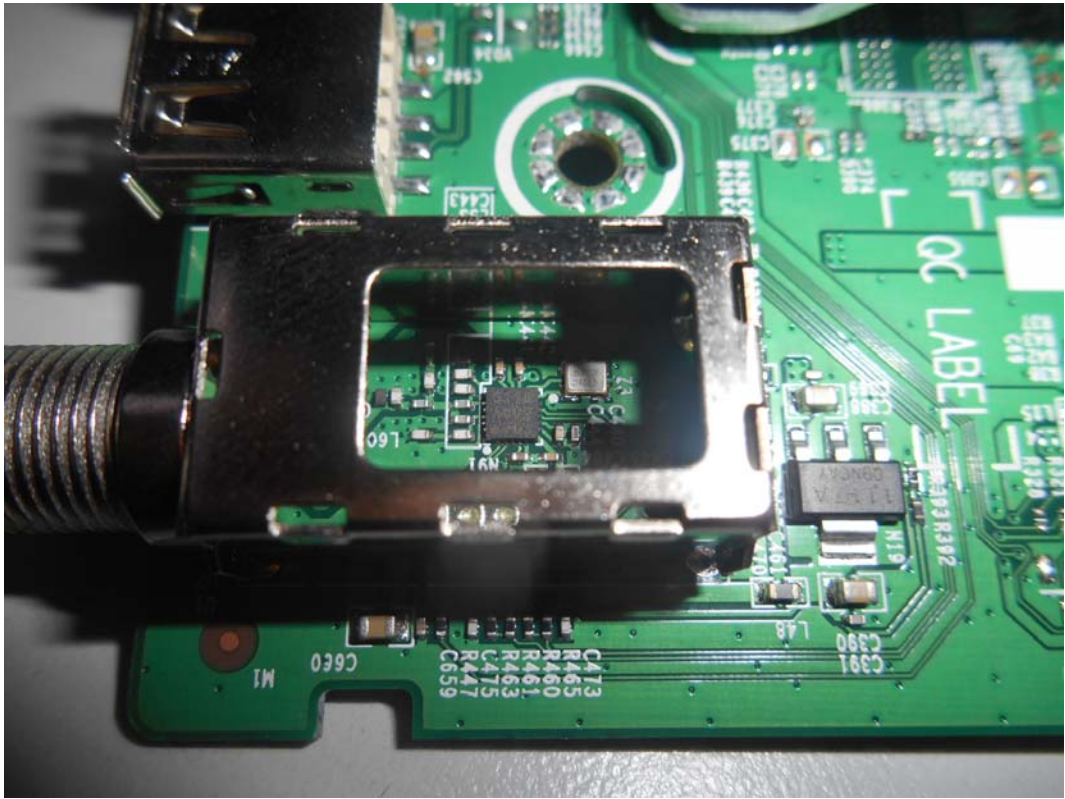


FIGURE 10  
LED LCD TV (M/N: 55P62)  
IR BOARD (COMPONENT SIDE)

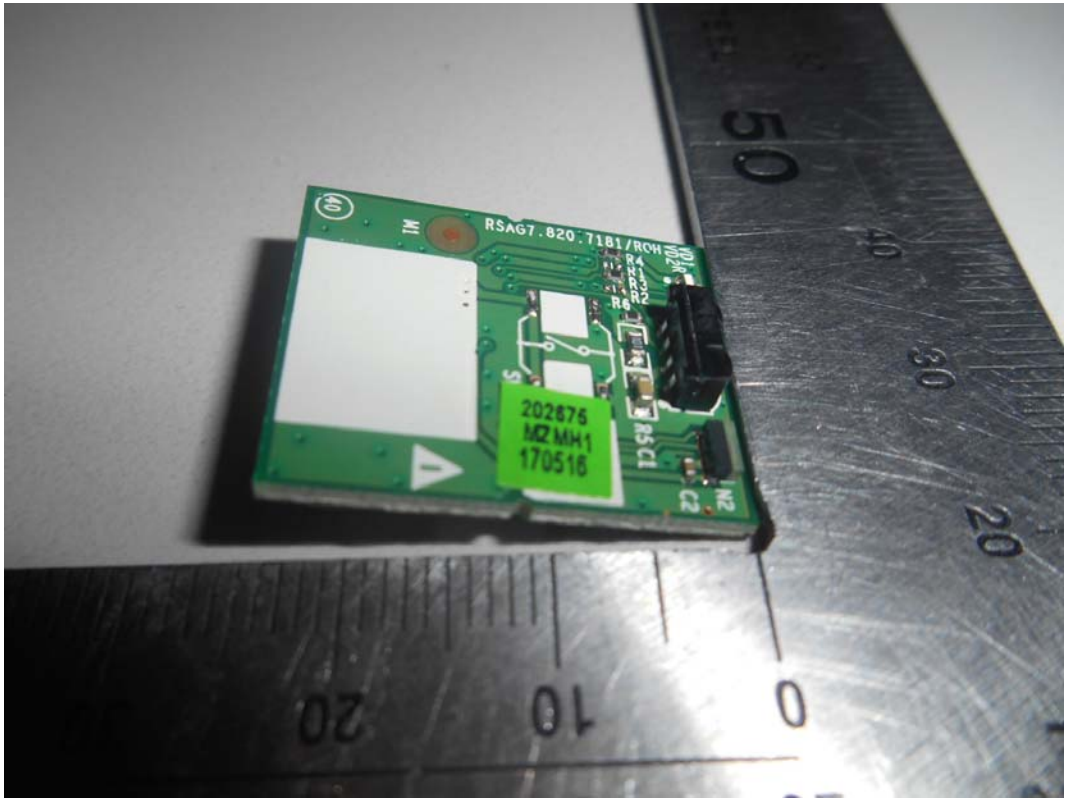


FIGURE 11  
LED LCD TV (M/N: 55P62)  
IR BOARD (SOLDERED SIDE)



FIGURE 12  
LED LCD TV (M/N: 55P62)  
RF BOARD (COMPONENT SIDE)

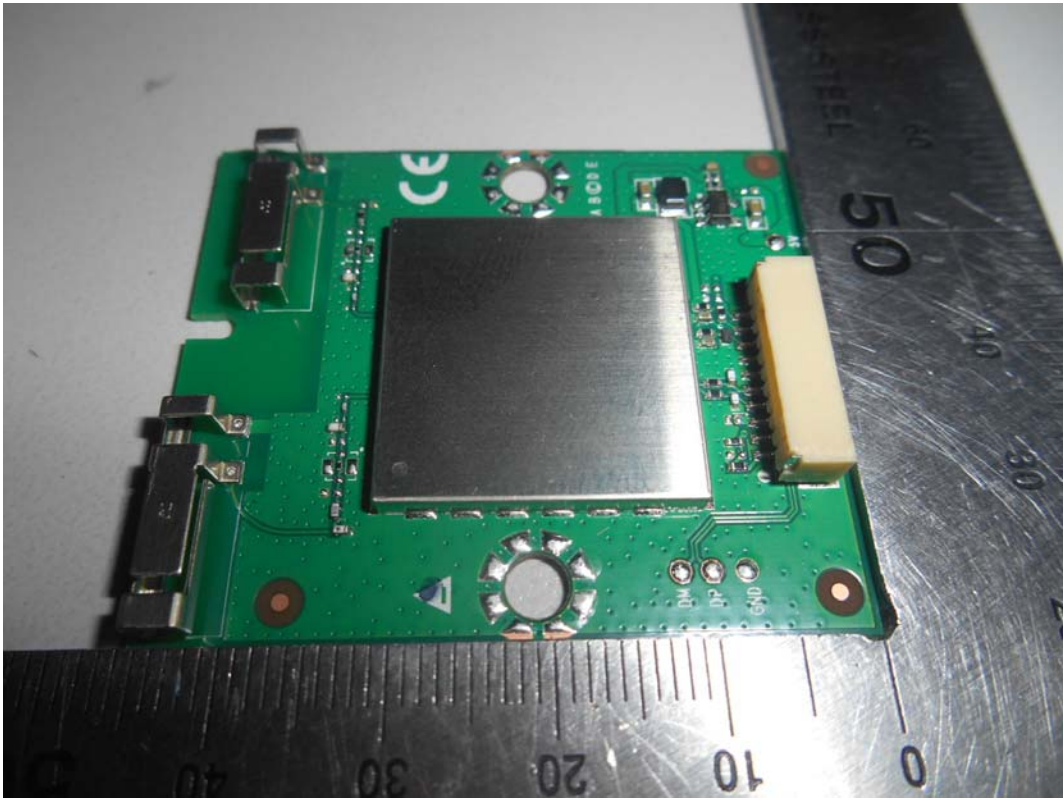


FIGURE 13  
LED LCD TV (M/N: 55P62)  
RF BOARD (SOLDERED SIDE)

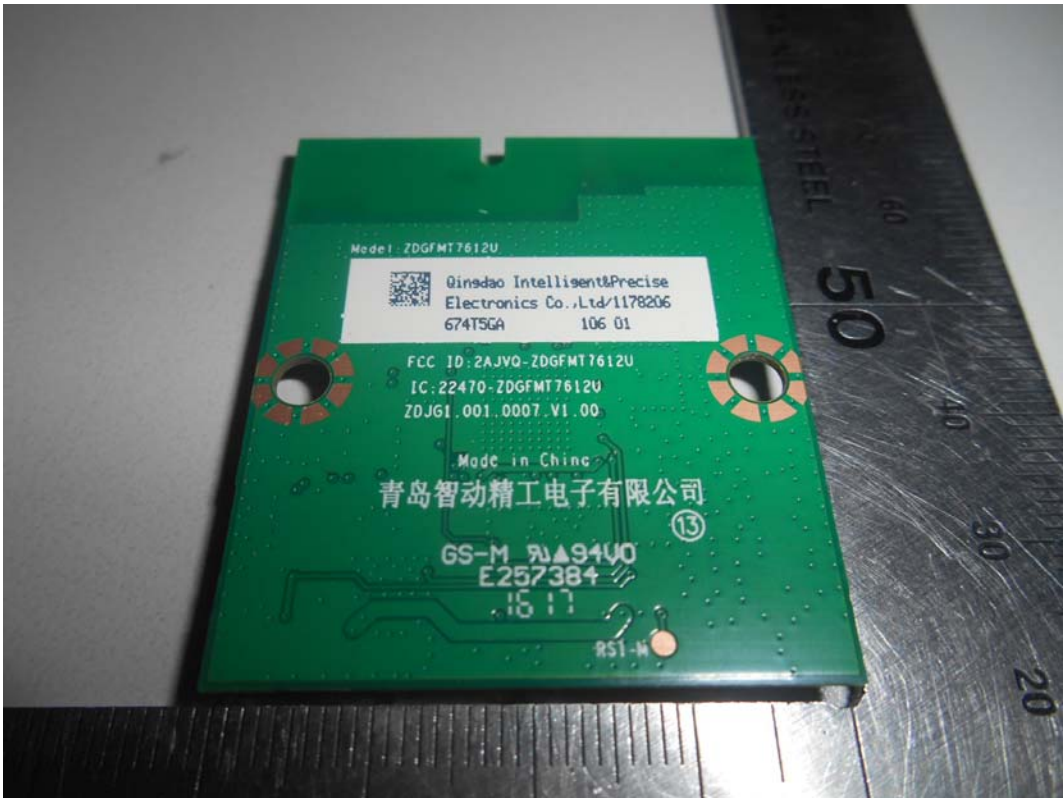


FIGURE 14  
LED LCD TV (M/N: 55P62)  
RF BOARD LABEL

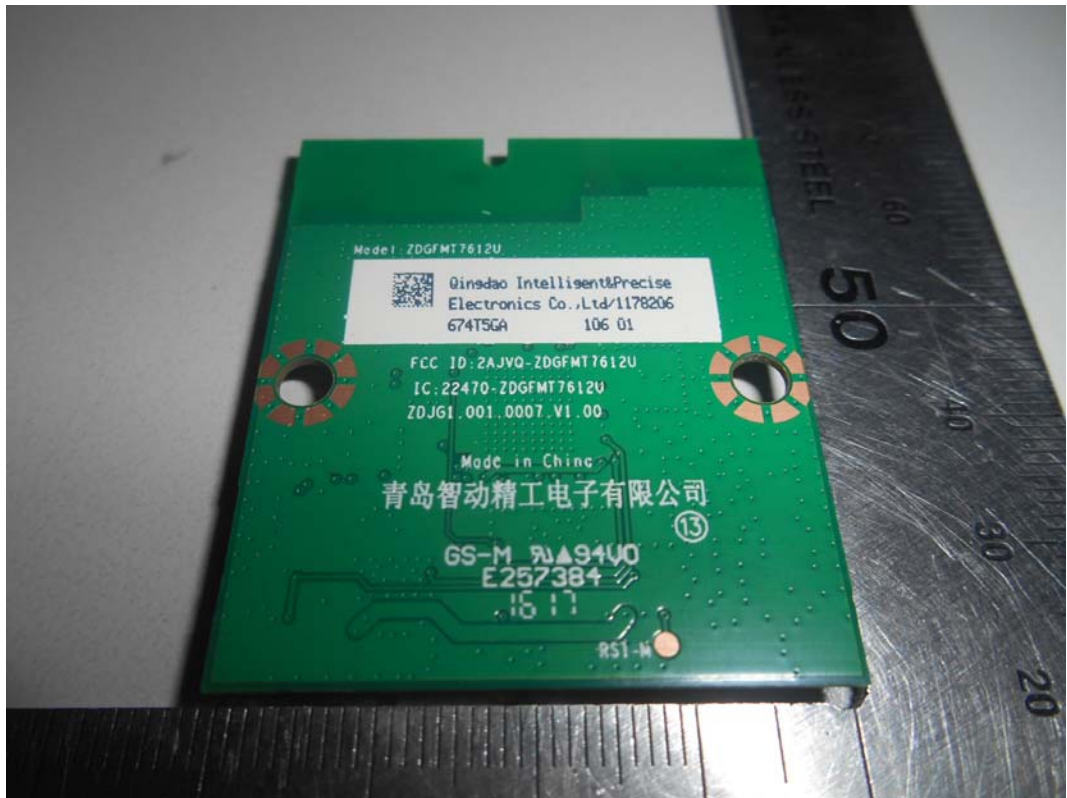


FIGURE 15  
LED LCD TV (M/N: 55P62)  
RF BOARD COVER REMOVED





FIGURE 16  
LED LCD TV (M/N: 55P62)  
LCD PANEL BOARD (COMPONENT SIDE)



FIGURE 17  
LED LCD TV (M/N: 55P62)  
LCD PANEL BOARD (SOLDERED SIDE)

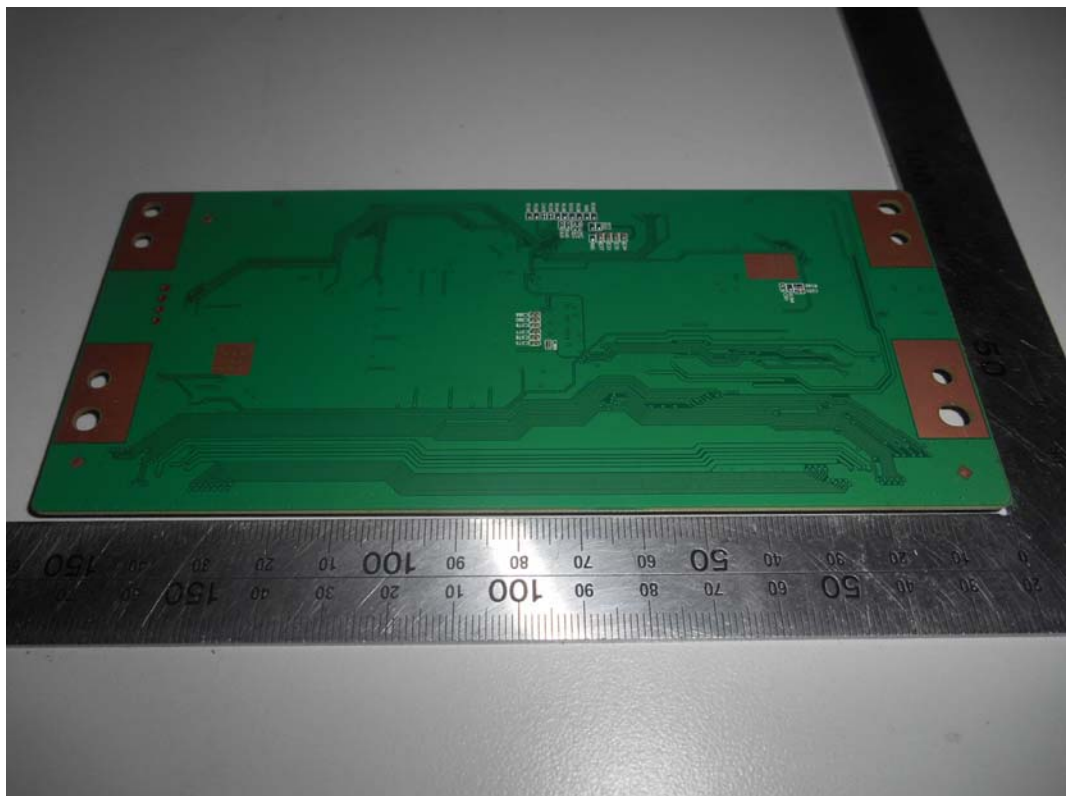


FIGURE 18  
LED LCD TV (M/N: 55P62)  
CHIP ON LCD PANEL BOARD



FIGURE 19  
LED LCD TV (M/N: 55P62)  
KEY BOARD (COMPONENT SIDE)

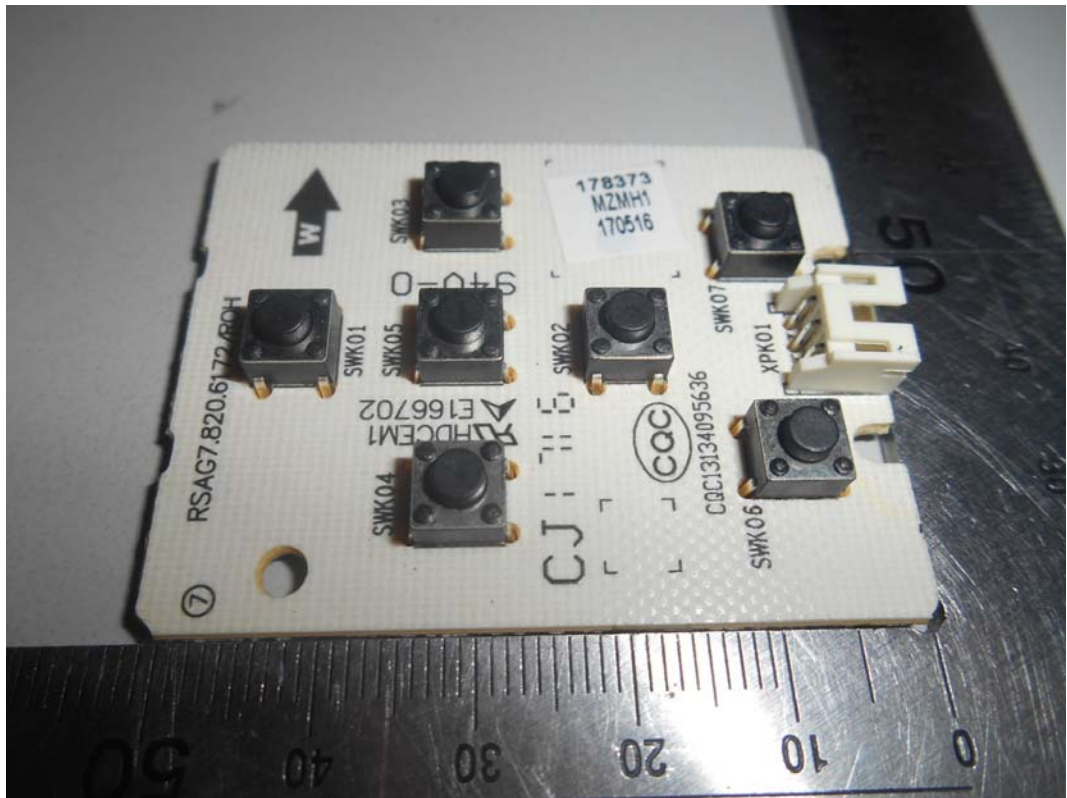


FIGURE 20  
LED LCD TV (M/N: 55P62)  
KEY BOARD (SOLDERED SIDE)

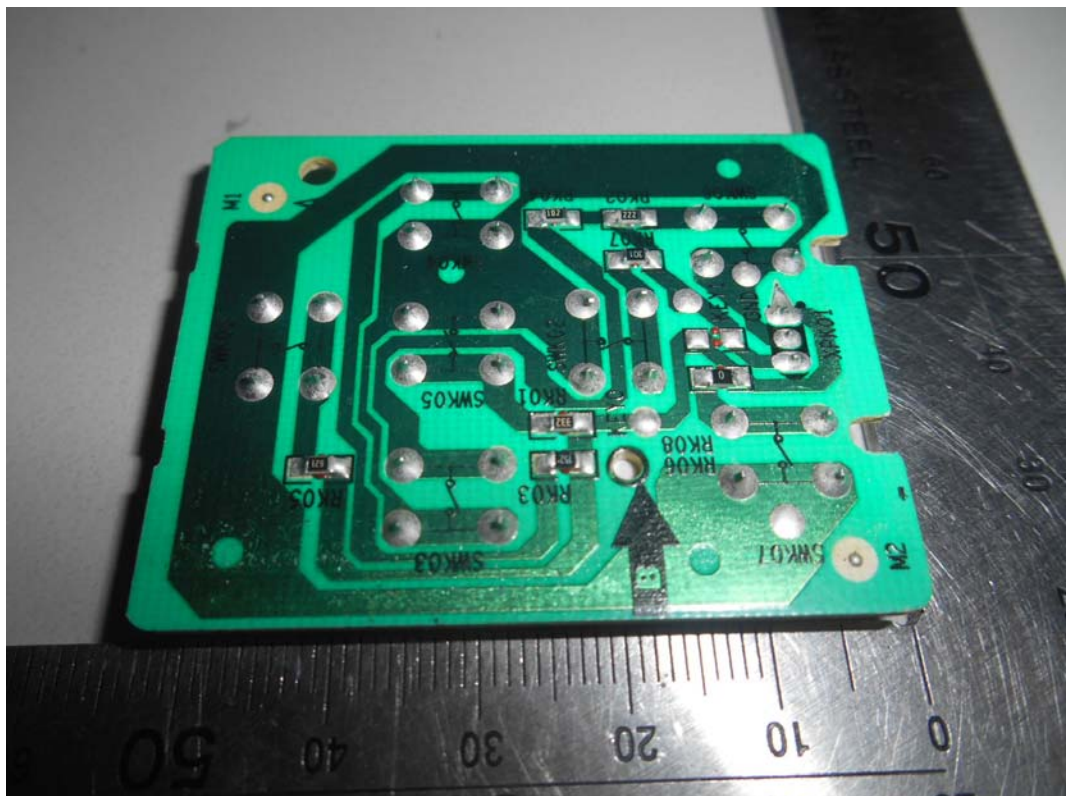


FIGURE 21  
LED LCD TV (M/N: 55P62)  
DEBUG

