

*FIGURE 1*  
*LED LCD TV (M/N: 65H7D)*  
*COVER REMOVED*



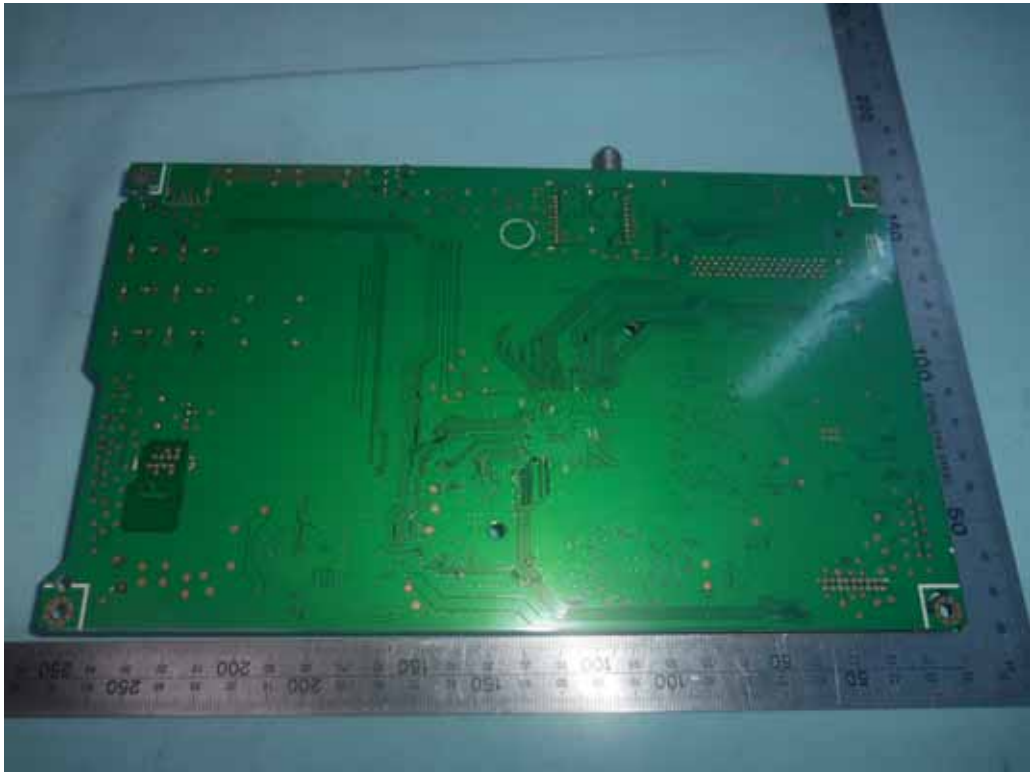
*FIGURE 2*  
*LED LCD TV (M/N: 65H7D)*  
*PANEL LABEL*



*FIGURE 3*  
*LED LCD TV (M/N: 65H7D)*  
*MAIN BOARD (COMPONENT SIDE)*



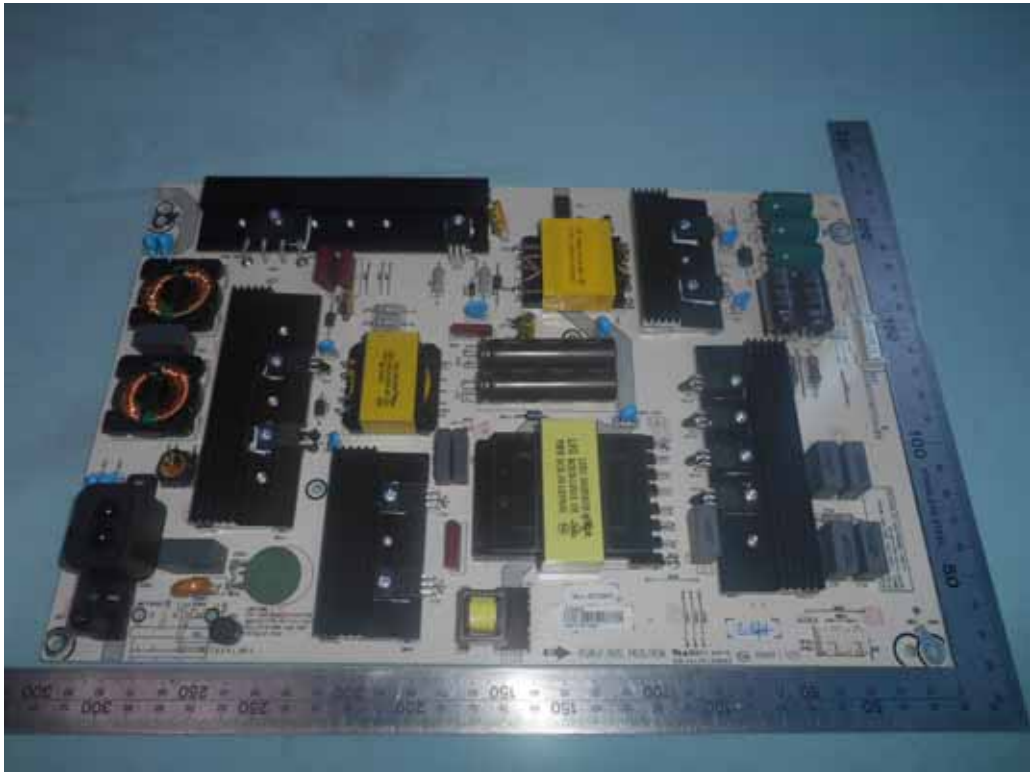
*FIGURE 4*  
*LED LCD TV (M/N: 65H7D)*  
*MAIN BOARD (SOLDERED SIDE)*



*FIGURE 5*  
*LED LCD TV (M/N: 65H7D)*  
*CHIP AND CRYSTAL ON MAIN BOARD*



*FIGURE 6*  
*LED LCD TV (M/N: 65H7D)*  
*POWER BOARD (COMPONENT SIDE)*



*FIGURE 7*  
*LED LCD TV (M/N: 65H7D)*  
*POWER BOARD (SOLDERED SIDE)*

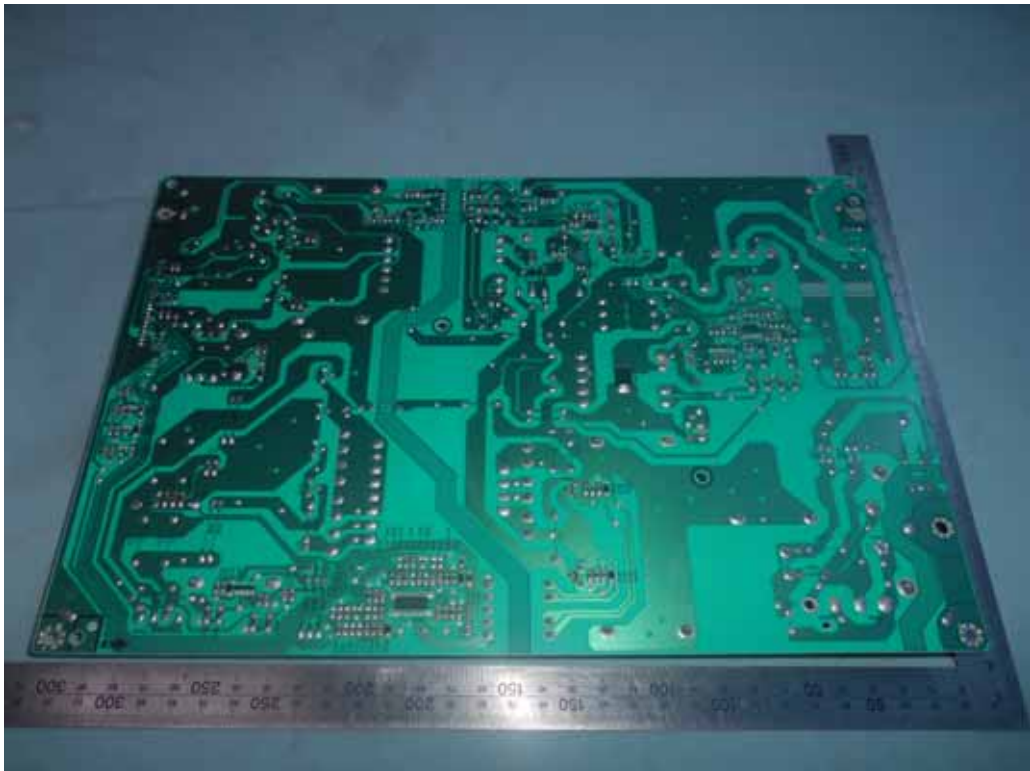


FIGURE 8  
LED LCD TV (M/N: 65H7D)  
TUNER BOARD



FIGURE 9  
LED LCD TV (M/N: 65H7D)  
RF BOARD (COMPONENT SIDE)



FIGURE 10  
LED LCD TV (M/N: 65H7D)  
RF BOARD (SOLDERED SIDE)



FIGURE 11  
LED LCD TV (M/N: 65H7D)  
RF BOARD LABEL



*FIGURE 12*  
*LED LCD TV (M/N: 65H7D)*  
*RF BOARD COVER REMOVED*



*FIGURE 13*  
*LED LCD TV (M/N: 65H7D)*  
*PANEL CONTROL BOARD (COMPONENT SIDE)*



FIGURE 14  
LED LCD TV (M/N: 65H7D)  
PANEL CONTROL BOARD (SOLDERED SIDE)



FIGURE 15  
LED LCD TV (M/N: 65H7D)  
CHIP ON PANEL CONTROL BOARD





FIGURE 16  
LED LCD TV (M/N: 65H7D)  
KEY BOARD (COMPONENT SIDE)



FIGURE 17  
LED LCD TV (M/N: 65H7D)  
KEY BOARD (SOLDERED SIDE)

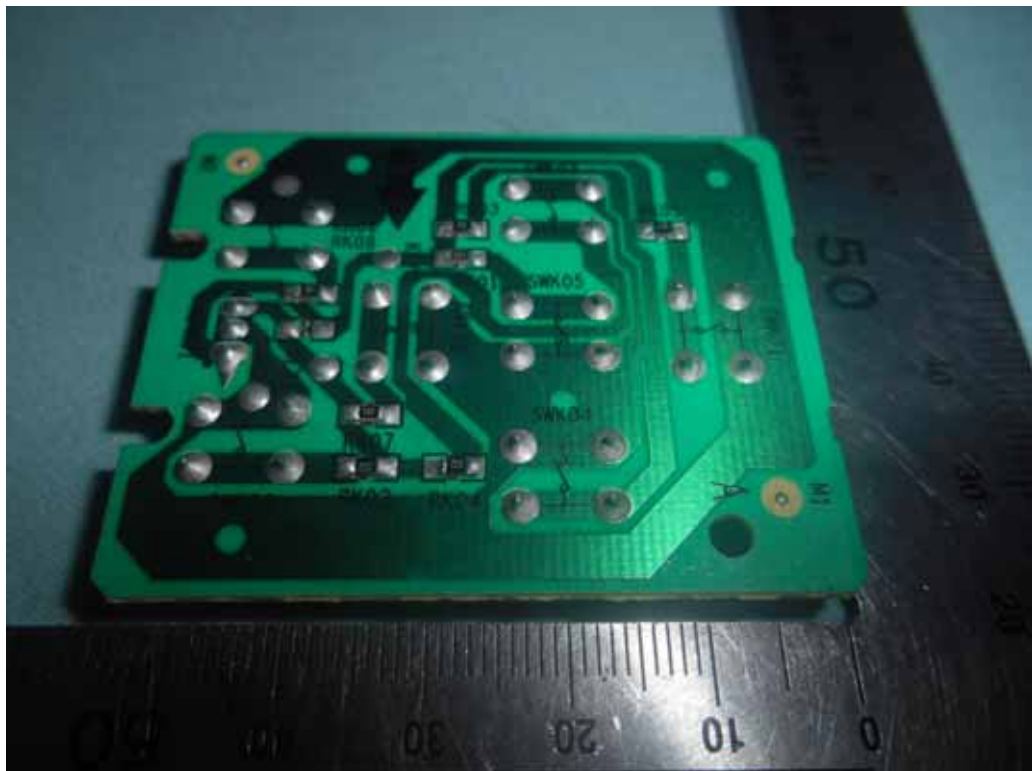


FIGURE 18  
LED LCD TV (M/N: 65H7D)  
IR BOARD (COMPONENT SIDE)



FIGURE 19  
LED LCD TV (M/N: 65H7D)  
IR BOARD (SOLDERED SIDE)



FIGURE 20  
LED LCD TV (M/N: 65H7D)  
DEBUG

