

FIGURE 1
LED LCD TV (M/N: 55R6D)
COVER REMOVED



FIGURE 2
LED LCD TV (M/N: 55R6D)
LCD PANEL LABEL



FIGURE 3
LED LCD TV (M/N: 55R6D)
POWER BOARD (COMPONENT SIDE)

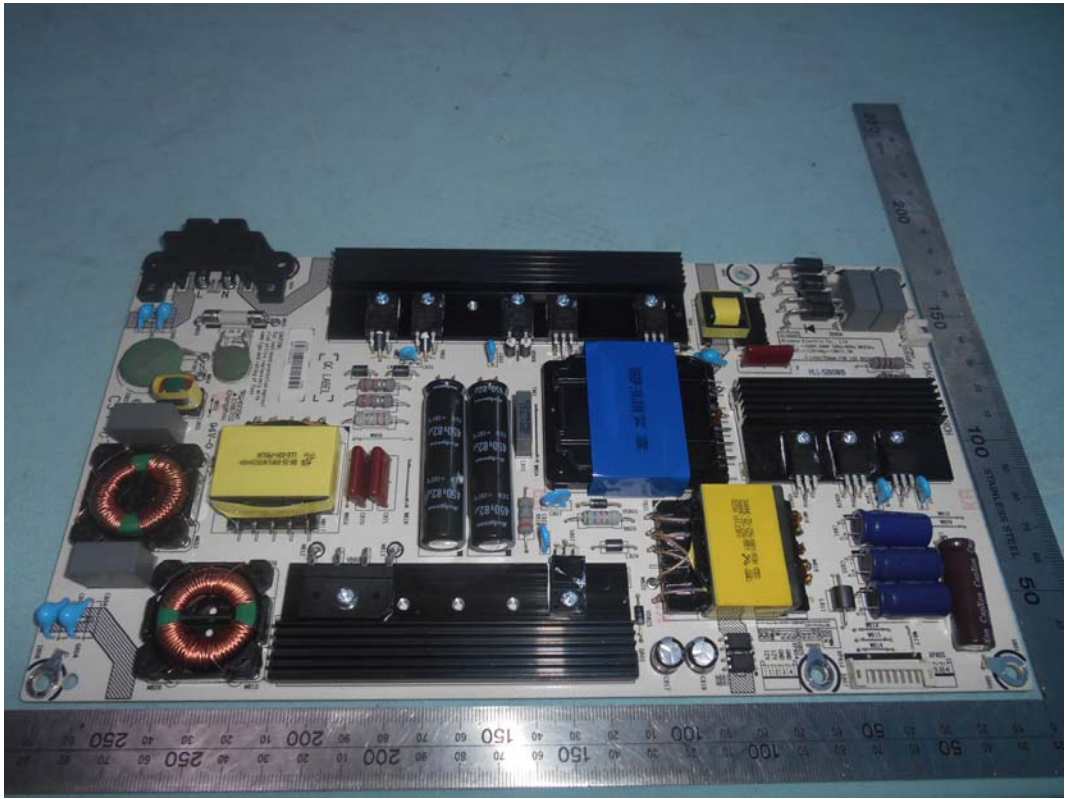


FIGURE 4
LED LCD TV (M/N: 55R6D)
POWER BOARD (SOLDERED SIDE)

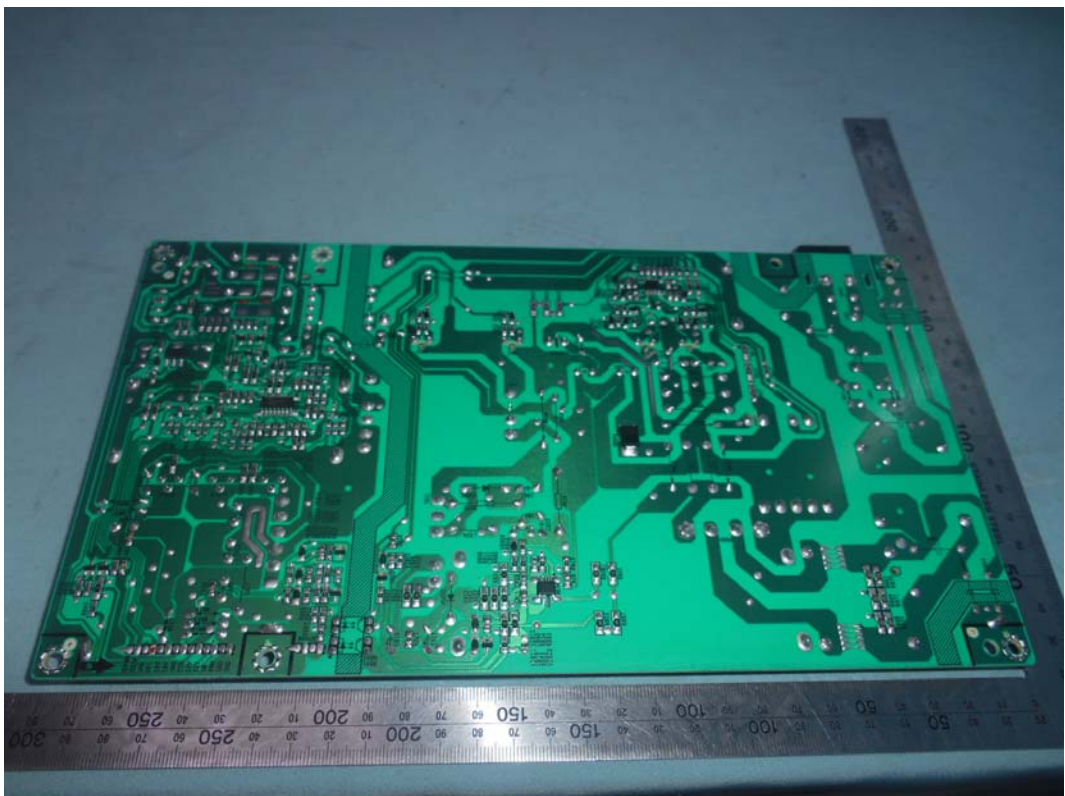


FIGURE 5
LED LCD TV (M/N: 55R6D)
IR BOARD (COMPONENT SIDE)

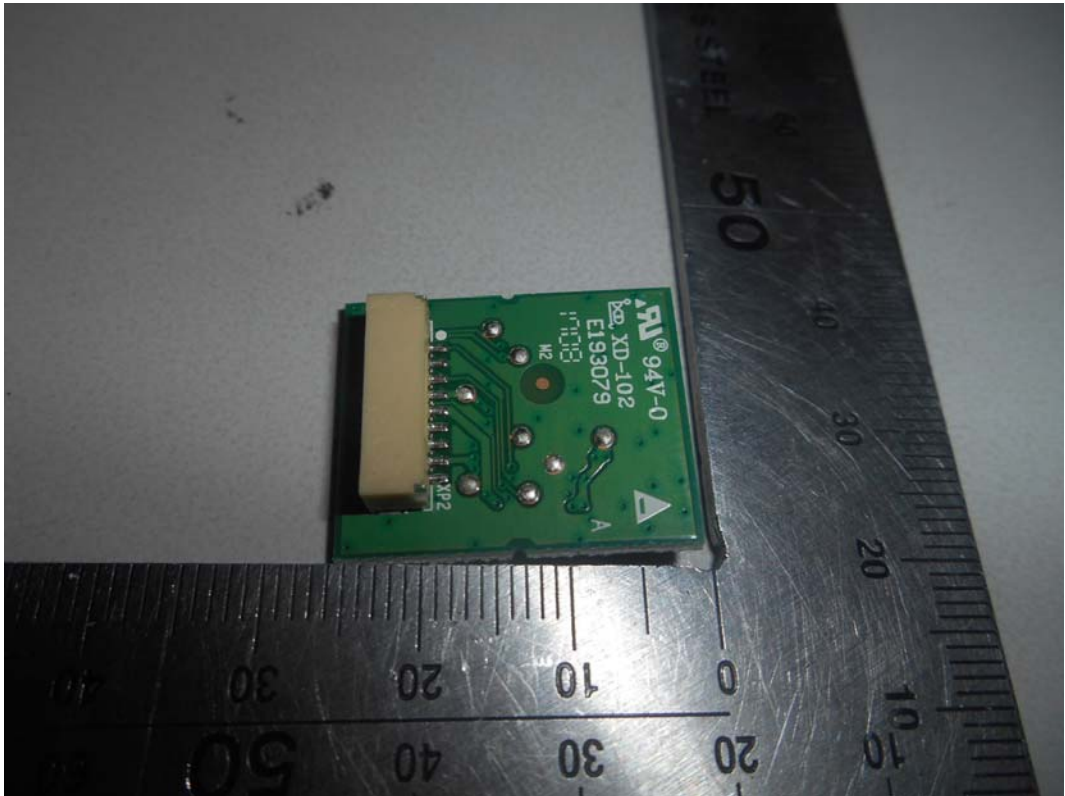
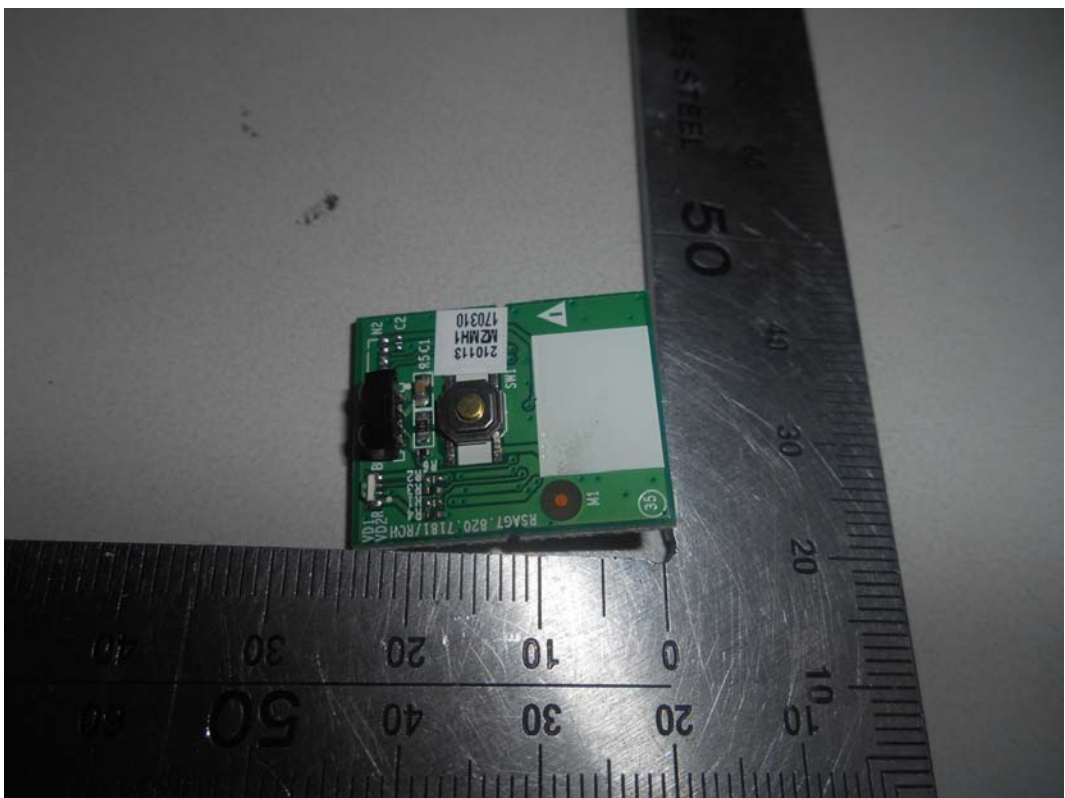


FIGURE 6
LED LCD TV (M/N: 55R6D)
IR BOARD (SOLDERED SIDE)



*FIGURE 7
LED LCD TV (M/N: 55R6D)
MAIN BOARD (COMPONENT SIDE)*



*FIGURE 8
LED LCD TV (M/N: 55R6D)
MAIN BOARD (SOLDERED SIDE)*

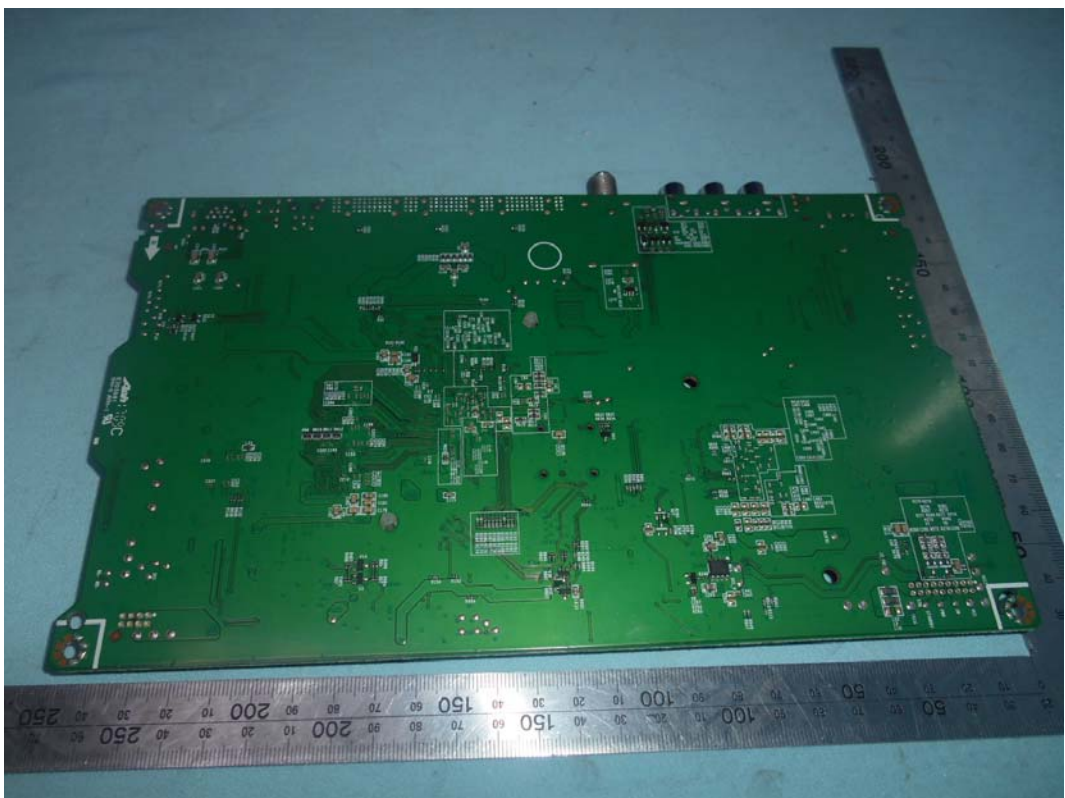


FIGURE 9
LED LCD TV (M/N: 55R6D)
CHIP AND CRYSTAL ON MAIN BOARD

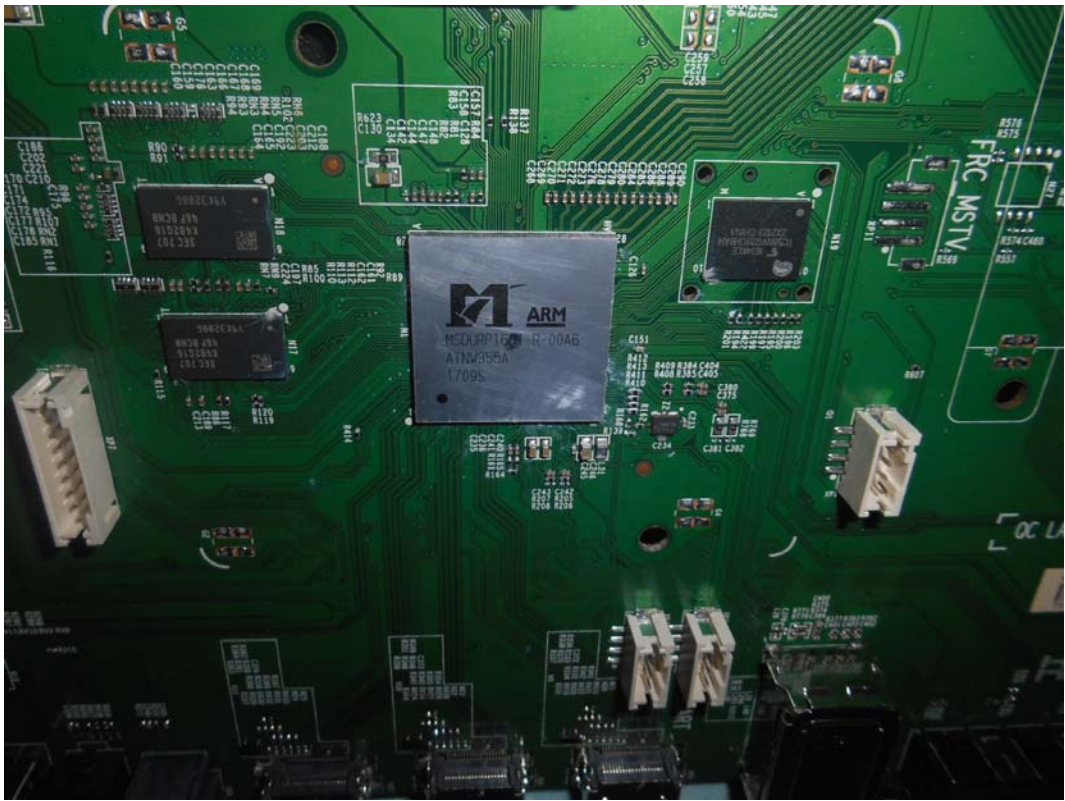


FIGURE 10
LED LCD TV (M/N: 55R6D)
TUNER

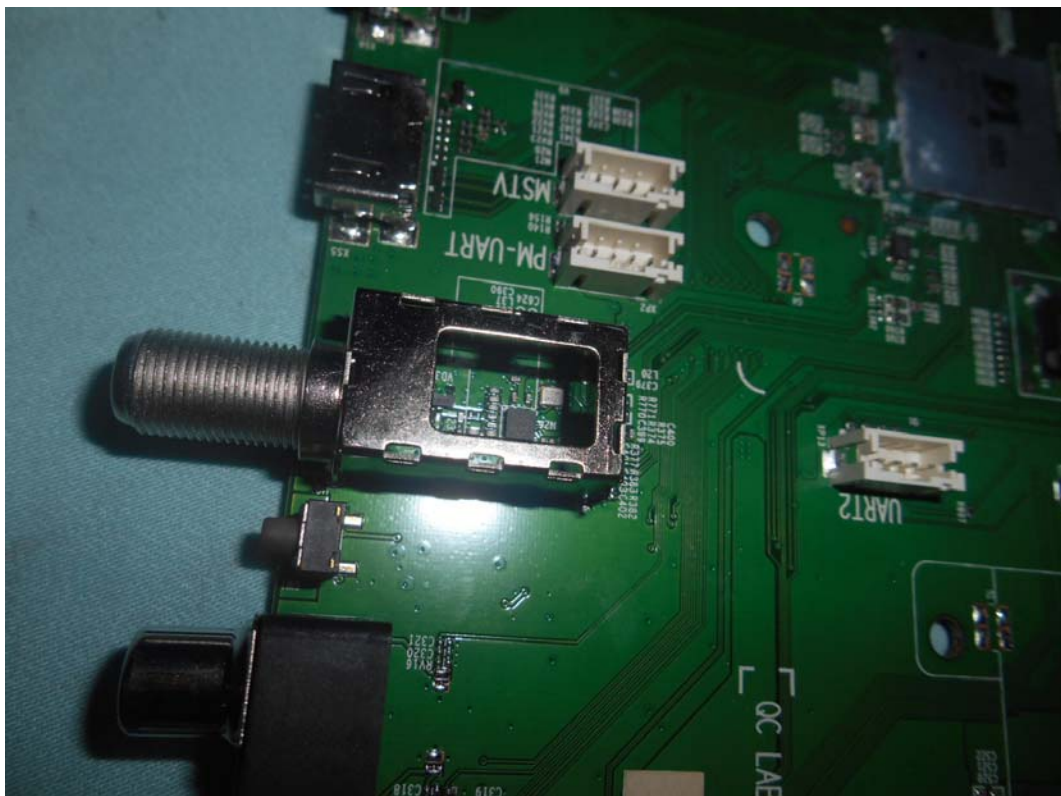


FIGURE 11
LED LCD TV (M/N: 55R6D)
RF BOARD (COMPONENT SIDE)

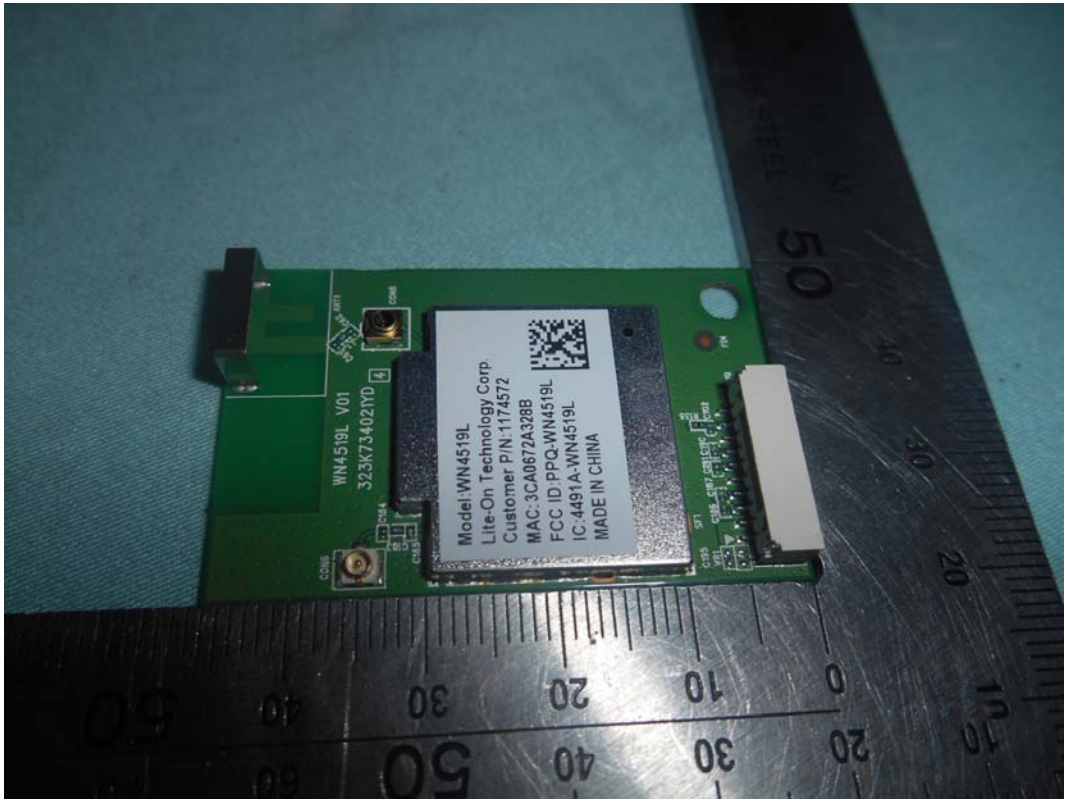


FIGURE 12
LED LCD TV (M/N: 55R6D)
RF BOARD (SOLDERED SIDE)

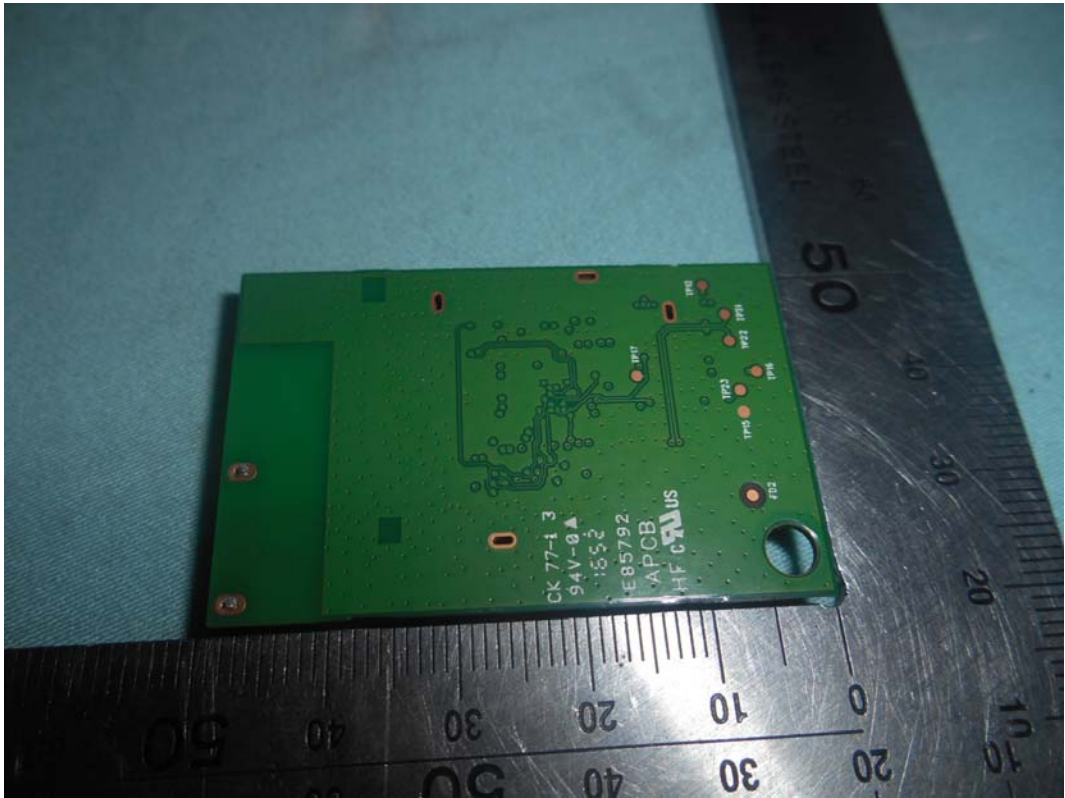


FIGURE 15
LED LCD TV (M/N: 55R6D)
PANEL BOARD (COMPONENT SIDE)



FIGURE 16
LED LCD TV (M/N: 55R6D)
PANEL BOARD (SOLDERED SIDE)

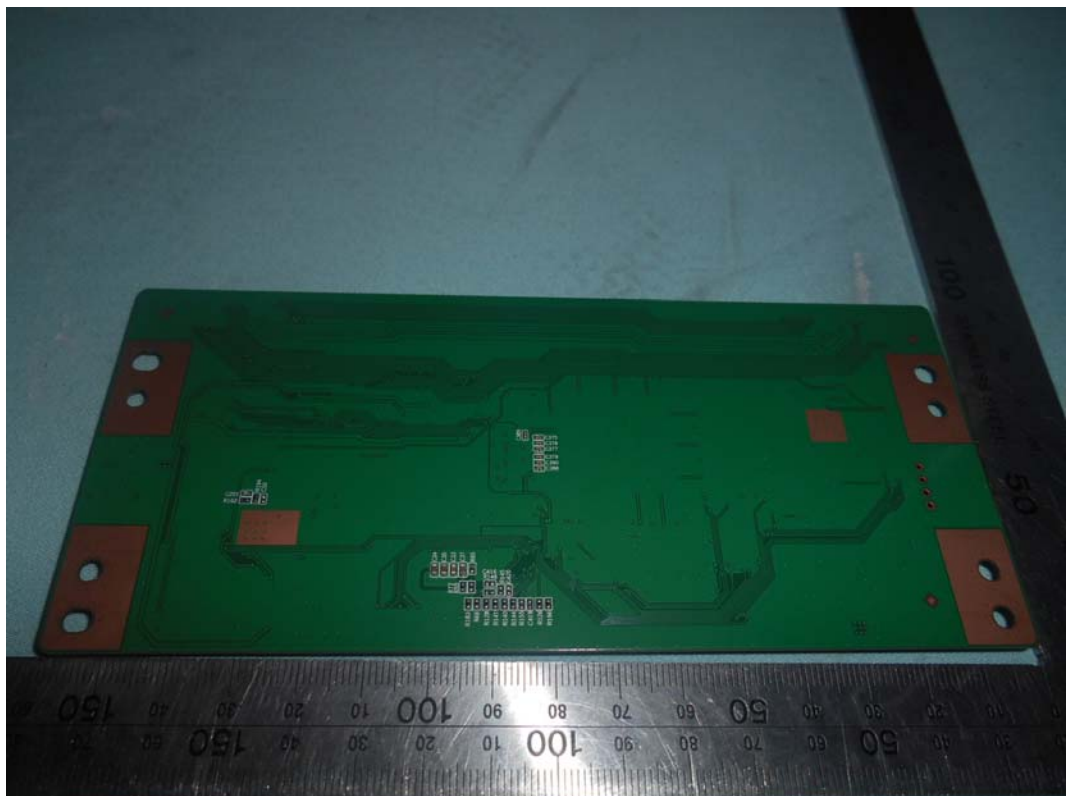


FIGURE 17
LED LCD TV (M/N: 55R6D)
CHIP AND CRYSTAL ON PANEL BOARD

