

FIGURE 1
LED LCD TV (M/N: LC-50P5000U)
COVER REMOVED



FIGURE 2
LED LCD TV (M/N: LC-50P5000U)
LCD PANEL LABEL



FIGURE 3
LED LCD TV (M/N: LC-50P5000U)
POWER BOARD (COMPONENT SIDE)

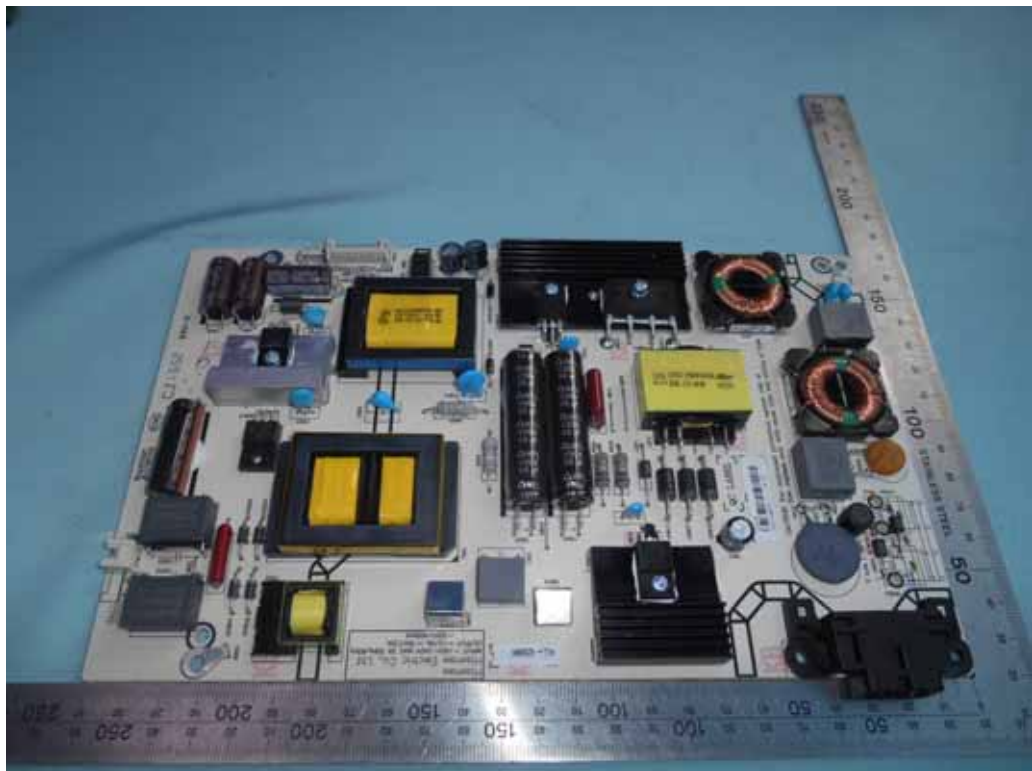


FIGURE 4
LED LCD TV (M/N: LC-50P5000U)
POWER BOARD (SOLDERED SIDE)



FIGURE 5
LED LCD TV (M/N: LC-50P5000U)
IR BOARD (COMPONENT SIDE)



FIGURE 6
LED LCD TV (M/N: LC-50P5000U)
IR BOARD (SOLDERED SIDE)

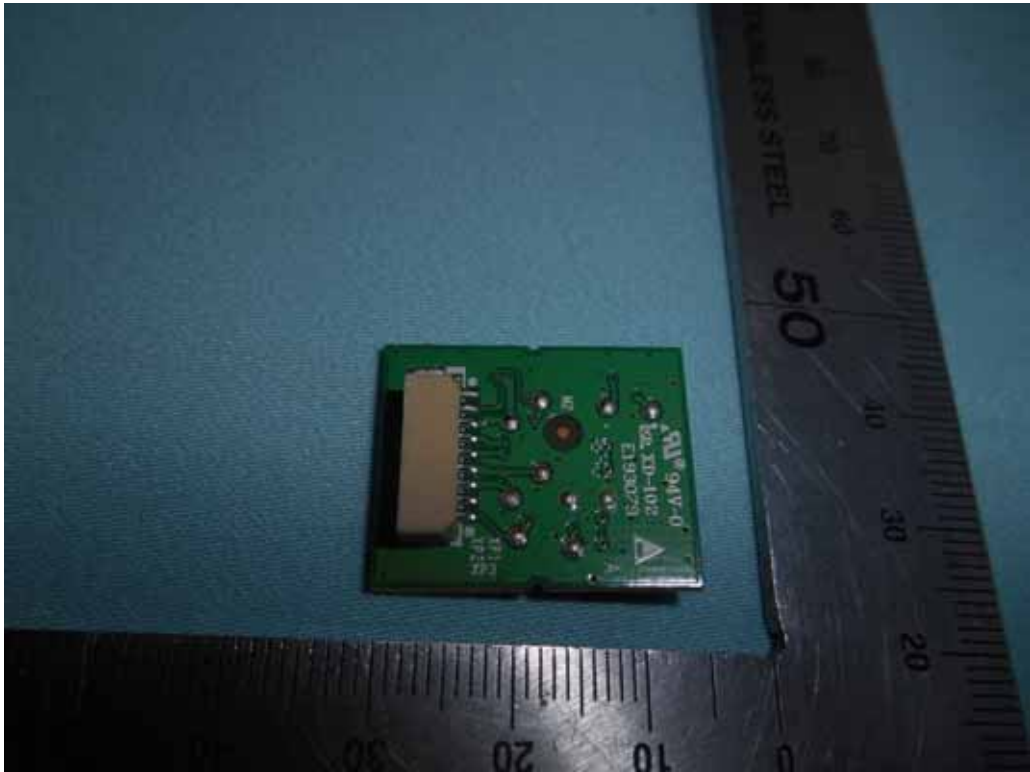


FIGURE 7
LED LCD TV (M/N: LC-50P5000U)
MAIN BOARD (COMPONENT SIDE)



FIGURE 8
LED LCD TV (M/N: LC-50P5000U)
MAIN BOARD (SOLDERED SIDE)



FIGURE 9
LED LCD TV (M/N: LC-50P5000U)
CHIP AND CRYSTAL ON MAIN BOARD



FIGURE 10
LED LCD TV (M/N: LC-50P5000U)
TUNER



FIGURE 11
LED LCD TV (M/N: LC-50P5000U)
RF BOARD (COMPONENT SIDE)



FIGURE 12
LED LCD TV (M/N: LC-50P5000U)
RF BOARD (SOLDERED SIDE)

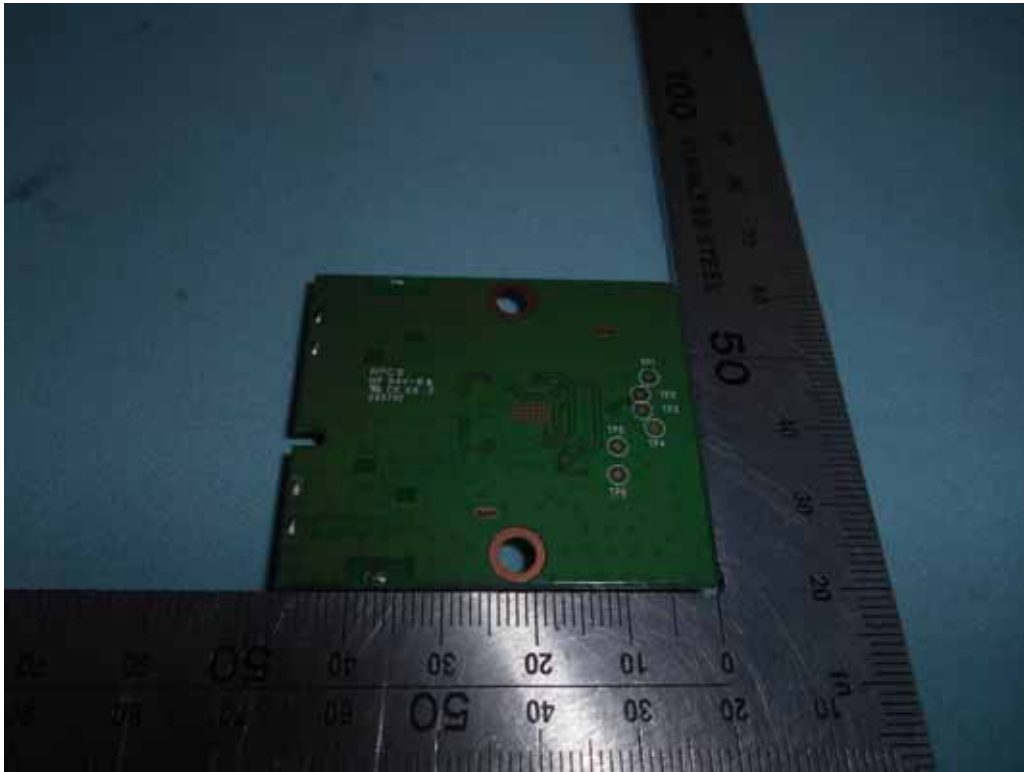


FIGURE 13
LED LCD TV (M/N: LC-50P5000U)
RF LABEL



FIGURE 14
LED LCD TV (M/N: LC-50P5000U)
RF COVER REMOVED



FIGURE 15
LED LCD TV (M/N: LC-50P5000U)
KEY BOARD (COMPONENT SIDE)

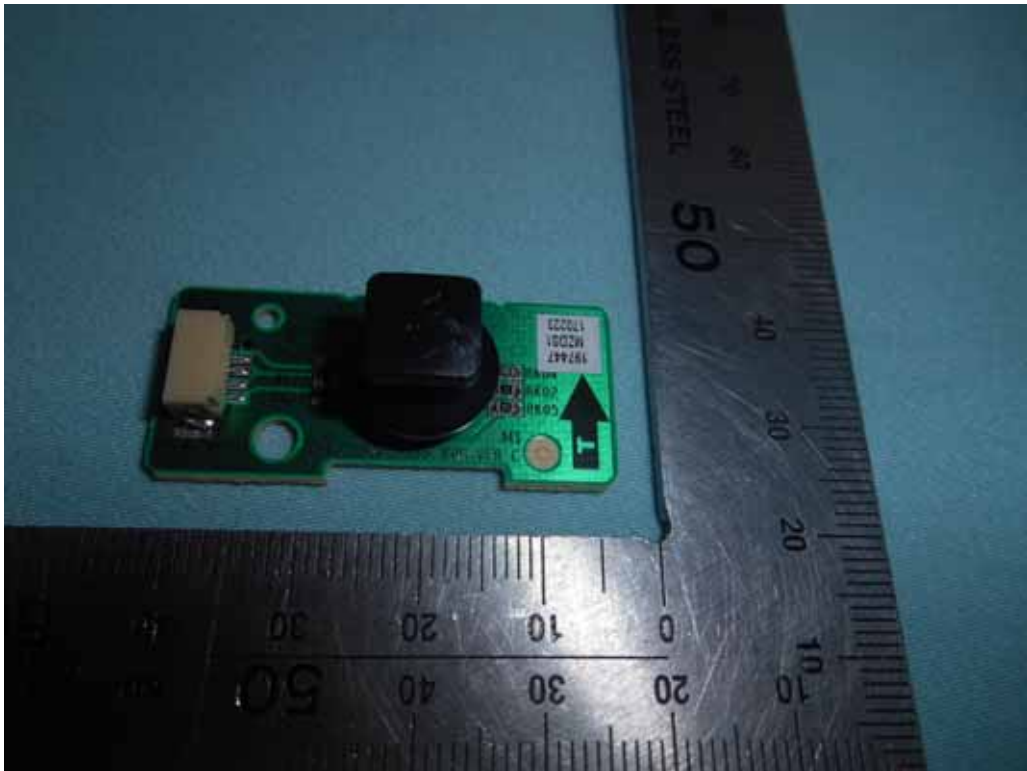
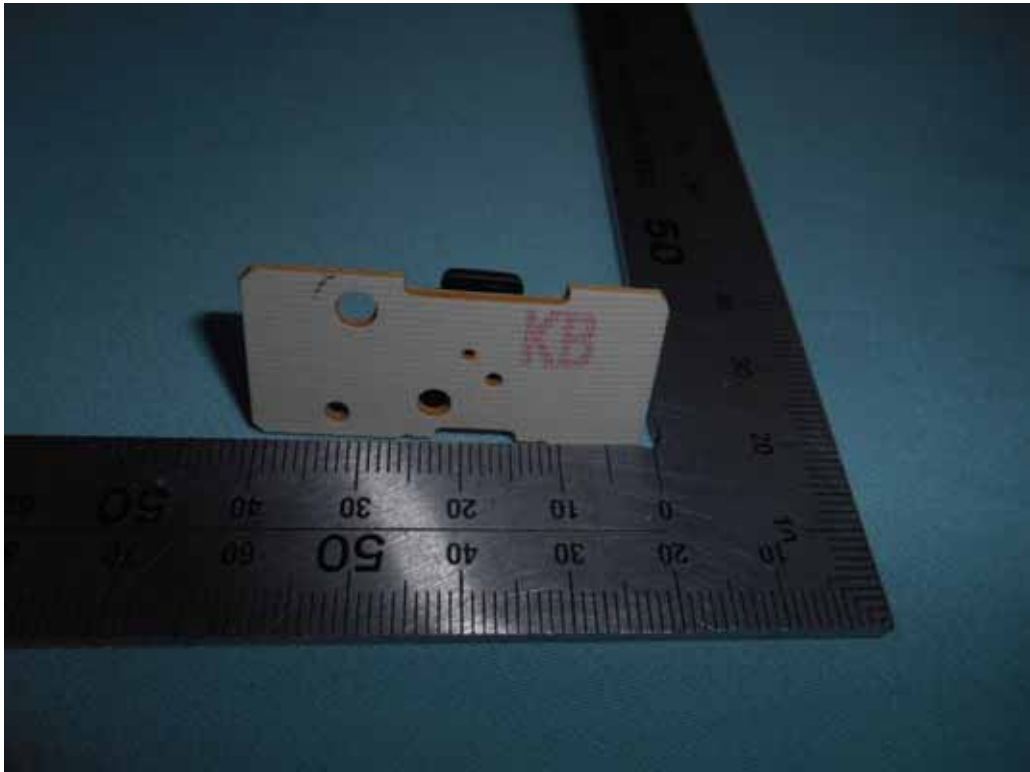
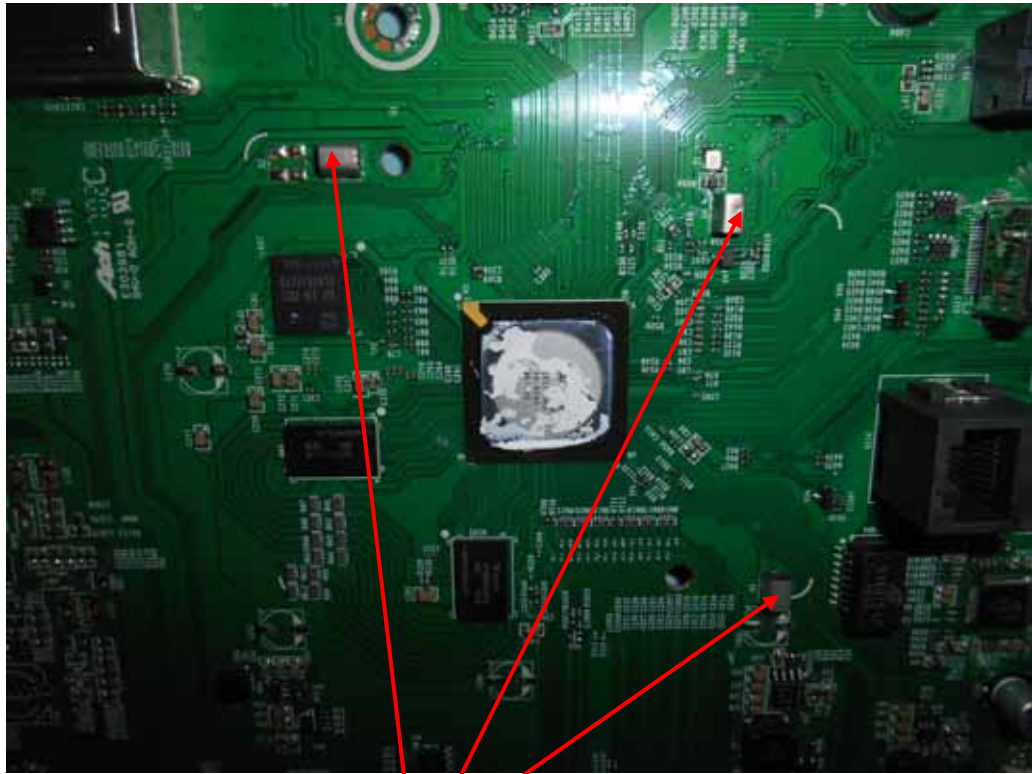


FIGURE 16
LED LCD TV (M/N: LC-50P5000U)
KEY BOARD (SOLDERED SIDE)



*FIGURE 17
LED LCD TV (M/N: LC-50P5000U)
DEBUG #1*



Debug

*FIGURE 18
LED LCD TV (M/N: LC-50P5000U)
DEBUG #2*

